

MICKLEHAM PARISH Magazine

A community magazine for Mickleham and Westhumble



A.N. Colwell 1984

June 2022

PROFESSIONAL CARPET & UPHOLSTERY CLEANING

- Local family running company
- Over 100's 5-star Reviews
- Award-Winning Customer Service
- Safe for Kids, Pets, and the Environment
- Effective against dirt & stains from drinks, food, makeup, pets & more

**SURREY
MAIDS**

REGULAR CLEANING

- Professional Equipment
- Trained Staff
- DBS Checked
- Flexible Hours

DEEP CLEANING

- Moving out/in services
- Seasonal Cleaning
- Oven Cleaning
- Commercial Cleaning
- Tenancy
- Windows Cleaning
- Schools

PATTY PLUS 01306 866288
SERVICES LTD OFFICE@PATTY.PLUS
WWW.PATTY.PLUS

Bullimores



Accountants for Life
Tax • Accounts • Probate
Inheritance Tax &
Executorship

T: 01306 880880

E: partners@bullimores.co.uk

W: www.bullimores.co.uk

Bullimores LLP licensed to carry out the reserved legal activity of non-contentious probate in England & Wales by the ICAEW

MICKLEHAM PARISH Magazine

June 2022

Mickleham Parish Magazine

A community magazine for Mickleham and Westhumble published under the auspices of Mickleham PCC with an independent editorial panel.

The magazine is published at the beginning of each month except January and August.

COPY DEADLINE
JULY/AUGUST
MAGAZINE
Sunday
12th June

send to:

Sue Tatham
St Anthony, Pilgrim's Way
Westhumble
Dorking RH5 6AW
01306 882547

editor@micklehammag.co.uk
Contributions in any form are welcome as are good quality photographs. There is no charge for advertising local charity and community events. However the editors reserve the right to shorten omit or reformat articles submitted for publication depending on space.



Printed by Holbrooks Printers
Portsmouth

Mickleham Rectory

Hi everyone

Anniversaries are good times to reflect on the past. As I approach the anniversary of my ordination which was in early July quite a few years ago now, I like to pause and remember. I recall with thanks the joyful moments of ministry, the partnerships with three different congregations and God's faithfulness. As I look back, I recognise there have been difficult times but try to learn from them and know they have helped develop perseverance and resilience. This year marks the historic 70th anniversary of the accession of the Queen to the throne and early June is set aside for celebrations, which I am sure we will all enjoy. A time to be thankful and reflect on the example of our Queen.

I found an extract from the Queen's Coronation Address which seemed quite moving. She felt that she could not perform her role without help. She had the stalwart support of her late husband, Prince Philip, but she asked for the prayer support of the whole Commonwealth and so sought the help of God. She recognised the extent of the task, what it would involve and knew it would be challenging. But she knew she had been called to serve God and country in this way. Queen Elizabeth, glimpsing the challenges that lay ahead made her coronation vows with absolute determination to keep them as best she could. She has been remarkably faithful.

While the Queen enjoys many privileges, she has not been immune from personal tragedies, disappointments and bereavement. She has suffered as many of us have in one way or another, but throughout she has remained a faithful servant. She is an example to us of a godly and resilient lady. I admire and respect her dedication, her commitment, her sense of duty, her reliance on God and her appreciation of support.

These are virtues that we can all aspire to no matter what our circumstances. We could dismiss these as old fashioned and belonging to a bygone era, but rather we should see dedication and commitment as essential. Through dedicated service of our neighbour or our community or a particular group, we can make a positive difference. Trying to honour our promises, not letting personal setbacks stop us and willingly accepting help or encouragement when needed are important for all our relationships. Above all we can trust that God will be faithful and will be there for us and for those for whom we pray.

Enjoy celebrating the Queen's Platinum Jubilee and I hope to see you at some of the events.

With best wishes

Sandra

The Rev'd Dr Sandra Faccini, Parish Priest

Extracts from Queen Elizabeth's Coronation Address of 2nd June 1953
I asked you all, whatever your religion, to pray for me on the day of my Coronation — to pray that God would give me wisdom and strength to carry out the promises that I should then be making.

...I have been aware all the time that my peoples, spread far and wide throughout every continent and ocean in the world, were united to support me in the task to which I have now been dedicated with such solemnity...

Stepping Stones

Come and join us for the
Mickleham and Westhumble
Community Platinum Jubilee Celebrations
on Friday 3rd and Saturday 4th June
See page 9 for details.



Last Monday night of the
month from 7.30 pm

01306 889932

steppingstonespub@gmail.com
www.steppingstonesdorking.co.uk

Please check website for up-to-date menus,
events and current opening times

Sherlock Funeral Service

Sherlock Funeral Service is an
Independent family owned business,
established over 100 years

- Private Service Chapel & Rest Rooms
- Home visits arranged if required
- Pre-Paid Funeral Plans available
- Free Parking

Telephone: 01306 882266

Trellis House, 190 South Street, Dorking RH4 2ES.

Email: office@sherlockandsons.co.uk



Funeral Directors & Monumental Masons



St Michael's Church Services

10 am Sunday Services available on Zoom

Joining information for both Zoom and telephone users is available in Pews News Online each week. If you would like to join us by Zoom then contact Alison Wood for the codes or to ask her to include you on the emailing list for Pews News: admin@micklehamchurch.org.uk / phone 01372 376443. We hope as many of you as possible will be able to join us for worship.

Please refer to Pews News Online for the latest information. If you missed any of the services, or would like to revisit them, all are available on the church YouTube channel:

<https://youtube.com/channel/UCI4pbewCT91iZhcd0EJBIw>

Jubilee Service Sunday 5th June

The service on 5th June at 10 am will be a special service to celebrate the Queen's Platinum Jubilee. All are welcome.

It will be a 'civic' service for everyone who wishes to celebrate the long reign of our Queen and will include the church choir and an item by the Mickleham Choral Society.

Coffee Morning at Westhumble Chapel

Please note that there will be no coffee morning in June because of the Jubilee celebrations.

Normal service will resume from Saturday 2nd July

Tea @3

Monday 13th June

Host - Mary Banfield

Garden Cottage
Old London Road
Mickleham

ALL WELCOME
TRANSPORT AVAILABLE

Confirmation and Adult Baptism

Sandra Faccini writes ...

We are hosting a confirmation service on 12th June at 6.30pm at St Michael's which is a lovely and rare opportunity.

To date we have two people wanting to be confirmed from our church which is great and encouraging. Others will be joining them from local churches

This is the prompt for you, if you have not been confirmed to think about it now as being at St Michael's will make it very special. Just let me know asap.

Also, if you have not been baptised there will be opportunity for adult baptism. If people are interested, I could see if reaffirmation of baptism is possible. If you are free, it is a lovely service to come along to and support the candidates.

Margaret Cornell

It is with sadness that we report the recent death of Margaret Cornell, aged 104. She was the widow of the Rev'd John Cornell, Rector of Mickleham 1953-1978. Margaret worked at Chatham House and after her retirement continued to proof read its newsletter well into her 90s. 'I daren't tell them how old I am.' she once remarked in a letter. She was our longest standing mailing list subscriber. We send our sincere condolences to Barbara and Tim.



Men's and Women's Saturday Breakfasts at the Stepping Stones

9 - 10 AM

A social gathering open to everyone

WOMEN'S BREAKFAST

3RD SATURDAYS

18th JUNE

Book with: Stephanie Randall
0773 6933 482

srandall55@gmail.com

MEN'S BREAKFAST

4TH SATURDAYS

25th JUNE

Book with: Andy Diamond
diamo1@hotmail.co.uk



Please support our
Food Bank collection
see page 26



St Michael's Church Community Group

The Group's activities are currently largely those of assisting the Jubilee Committee, in the build-up to the Jubilee Celebrations at the start of June. Nevertheless, important day-to-day activities are continuing.

FoodBank - a greater effort?

The current inflationary 'spike' makes our FoodBank work even more important. We have a number of regular givers, thank you, but really need individuals to add extra items to their shopping lists on a more regular basis. Better still, commit to a shopping bag once a month or so. This will ease the hassle of delivering to our collection

points in Mickleham and Westhumble. I have to say that the Westhumble drop-off point at Sue T's house is not very much used. For details of the supplies most needed, see page 26.

Autumn Monthly Lunches

Following the success of the weekly lunches during Lent, it has been decided to hold a monthly programme of autumn lunches (Sept-Nov). Same format and in the Village Hall. More details after the Jubilee.

Dorking Refugee Support Group

This Group has recently been re-formed and St Michael's Community Group intends to assist with help for Ukrainian

refugees, once they jump all of the hurdles put in front of them to reach our shores. The Group will offer support for both refugees and their hosts, with such matters as familiarization, befriending, contacting local welfare and other services, setting up banking and other independent support, social and online interaction including links to other Ukrainian groups, and language support.

We know of no refugees in our immediate area but know of 3 potential hosts (if others are out there, please let us know). The Community Group's main point of contact is Will Dennis email wdwdennis@icloud.com



Join Our Monthly Prayer Group

We are delighted to have been able to relaunch our monthly prayer meetings in church at the start of May with a session based around the very simple and lovely service of Compline (or Night Prayer), which so lends itself to silent reflection and quiet prayer. During this short service we have pauses to pray for world events and local needs, for

anyone who has requested a prayer for themselves or for others, and to address the prayers left on our prayer tree by visitors to the church.

We will be holding a similar session on the first Tuesday of every month, so the next one will be on Tuesday 7th June at 7pm. Please do come and join us; there is absolutely no pressure to pray out loud, your supporting

presence will be just as valuable. If you are not able to come, but would like us to pray for a particular person or situation in confidence, please get in touch on prayers@micklehamchurch.org.uk. Likewise, if you are not able to join us but would like to be part of the group of people praying for others, just let us know.

St Michael's PCC (Spirituality Group)

Have You Found the St Michael's YouTube Channel Yet?

Did you know that during lockdown for COVID-19, our technical wizard Kelvin created a YouTube account for the church so that anyone who missed a service could catch up really easily? The great thing about the way Kelvin runs and maintains the channel is that as well as the playlist of entire services, you can choose to listen to just the sermons, the songs and hymns that supplement our own efforts, or to the wonderful music from our organist David Fishwick. There are currently 313 videos available.

It is very easy to access the channel:

either from the St Michael's and All Angels Church website, by going to YouTube from the Services drop down list; or by going straight to <https://www.micklehamchurch.org.uk/youtube.htm>. Either way, the YouTube link will take you to the home page and you can then use the Playlists link at the top of the page to get you to services, sermons, the hymns and songs that supplement our own efforts, and the organ music.

There is such a lot to choose from, and you might find something you have never heard before that really inspires

you. Our most-played video, at nearly 700 times, is currently 'Xander's Song' by Katherine Jenkins, which was included in the Mothering Sunday service. Also, if you have not yet discovered it, we can heartily recommend 'The UK Blessing' which is No. 13 on the Hymns and Songs playlist. If you 'subscribe' to the channel, which does not cost anything and we encourage you to do, you will be notified every time new content is added. Why not take a look and let us know what you think.

St. Michael's PCC (Spirituality Group)

Superb professional
cleaning of carpets
oriental rugs
upholstery curtains
and leather
Guardsman
anti-stain protection

- spot stain and odour removal
- leather cleaning specialists
- flame retarding
- dust mite reduction service
- all work fully insured & guaranteed

For a free no obligation quotation call today
Freephone 0808 144 9071
John Joannides 28 Bracken Close Bookham

Safeclean
The furnishing care specialists from GUARDSMAN



*Pinehurst
Rest Home*

We aim to provide an excellent service at competitive rates supporting emotional physical and social needs of our clients always respecting and protecting their status as adults.

- Residential and 24-hour daycare
- Excellent cuisine
- Facilities for disabled: medic bath / lift
- Home doctor in attendance
- Single & sharing rooms
- Convalescent & short stays
- Lounge with TV & piano
- Separate dining room
- Physiotherapist chiropodist & hairdresser
- Entertainment: theatre visits / parties & cabarets held on premises

National Trust Road Box Hill
Mickleham Dorking Surrey RH5 6BY
Telephone: 01306 889942 / 888253

*Dorking
Decorators*
PROFESSIONAL
PAINTERS & DECORATORS

Established Local Family Business

- Over 20 years' experience
- Internal & External
- Commercial & Domestic
- Friendly, First Class Service
- Surrey / Sussex/ Greater London

FREE ESTIMATES
01306 640418
www.dorkingdecorators.co.uk
As approved by Checkatrade

51° NORTH
EAT • DRINK • SHOP

NOW 0° P'E'N

An exciting new place to eat, drink, shop, talk, meet and socialise

It's an ideal location to come and have your

- Morning Coffee and pastries
- Breakfast choices until mid-day
- Selection of lunch dishes
- Afternoon teas & cakes
- Wander around our food store selection

01306 320455
fiftyone.degreesnorth@yahoo.com

London Road
(Bottom of Byttom Hill)
Mickleham
Surrey
RH5 6EH

PRIVE
LUXURY HAIR SALON

8 High Street, Leatherhead
01372 360302
www.privelondon.co.uk i prive_leatherhead



SIMON HOOPER
For all your decorating needs...

Professional friendly and speedy service at all times

Fully insured	Insurance work
Exterior painting	Interior decorating
Free quotes & advice	Oil & Water-based products
Commercial/Domestic work	Wallpaper hanging & removal
07947 135 376 0208 3978 962	
www.slhdecoratingservices.com	

Westhumble Fields: We Need Your Help

As many readers will know, the two fields between Westhumble and the vineyard are owned by a limited company (WRFCL) which bought them in 1996 using funds provided by residents and who by doing so then became its shareholders. The purpose was to prevent the risk of their development in the future and to preserve the character of the village. This has proved to be a very wise decision as we often receive expressions of interest in the fields from property developers!

Until recently the company has been able to meet its outgoings from the rent it gets from the farmer but recent costs, mainly arising from essential tree surgery, have severely depleted our cash reserves and we urgently need further funds to help us meet

our anticipated future financial obligations (ie mainly likely levels of required tree surgery).

Accordingly, we are now inviting residents in our village (who have not already done so) to consider donating £100 (or more if you can) to our company to help us shore up our finances. In return we will issue shares in the company in a like amount. These shares will not have any monetary value as such (as dividends are unlikely ever to be paid on them or the fields ever sold) but they will enable you to have a stake in what we regard as a very important community asset and one that is integral to the quality of our life here.



In the field nearest the railway, two sickly ash trees were recently felled

We do hope you will consider donating. If you do or if you have any further questions at all about the fields or the company please email (or call) one of us below.

Thank you!

Chris Wilkinson, Director and Secretary
chris.wilkinson2@gmail.com
07774 772257

Jim Horsburgh, Director
jim@horsburgh.net 07876 654353
Westhumble Residents Field Company Limited

Countdown to 5th November

The Westhumble Bonfire: back on Saturday 5th November

Bonfire building will begin on the weekends of 15th/16th and 22nd/23rd October.
Make a note in your diary to save these dates to lend a hand with building the bonfire.

M MICKLEHAM CHORAL SOCIETY
Let's Party!

Our summer concert will have you tapping, clapping, swaying or swinging to a calypso, rumba, hoedown, waltz and much more.

Expect our usual spirited and enthusiastic approach to an eclectic blend of Copeland and Chilcott to Elton John and Billy Joel. Dad dancing is thankfully not compulsory.

SATURDAY 18th JUNE 8 pm Mickleham Village Hall

Tickets : Adults £12 / £6 children 12 and under

From Anne Weaver 01306 883932 secretary@micklehamchoral.org.uk

From the April 2015 Parish Magazine Unveiling the Queen's Diamond Jubilee Plaque



The Earl of Wessex visits Mickleham

After months of covert planning the day finally arrived when Prince Edward, the Earl of Wessex, visited St Michael's to unveil our Jubilee Plaque, commemorating the Queen's Diamond Jubilee. Although the Jubilee was back in 2012, it had taken a lot of hard work and dogged perseverance by Carole Brough Fuller to gain permission to have this plaque in our church as a permanent memorial of the occasion.

The guests were asked to be in their seats by 10.30 and the church was filled with quiet anticipation while everyone waited for the Prince to arrive. 'He hasn't left yet,' came the message at 10.35, surely he wouldn't be late? At 10.55 we were given instructions to ask the official guests, who included Bishop Andrew and members of the county and district councils, to line up outside in order to be introduced to the Prince by the Lord-Lieutenant, Dame Sarah Goad. Then, there he was in our midst, meeting representatives of everyone involved with the church. Rev'd Raby guided him from one group to another,

introduced the leader of each group, who then introduced the rest of their team. Whilst this was going on, Bishop Andrew, accompanied by Rev'd Graham Osborne, mingled with the other guests, enjoying the opportunity to meet people from his new diocese.

Following refreshments in the Ranmore Room, Prince Edward came out to meet the choir before sitting to listen to the anthem, *I Give You a New Commandment*. Rev'd Raby then gave a short speech and led us in prayers before inviting the Prince to unveil the plaque. After saying a few words, the plaque was unveiled in all its glory, accompanied by loud applause, encouraged by the Prince. Carole presented a gift of local produce; and the ceremony finished with prayers and a blessing from Bishop Andrew.

All too soon, it was over for those of us



Carole Brough Fuller presents a gift of local produce

inside, but as he stepped out into the sunlight, Prince Edward was greeted by the children from our infant school and nursery, waving flags and shouting enthusiastically. It was a beautiful sight. The Prince crouched down to speak to the children as he made his way slowly down the path, with the children waving and shouting 'goodbye'. At the gate, he turned, waved and said goodbye, then he was gone and we went back inside to chat about the events of the morning over a cup of coffee with cake and biscuits. It was the end of a truly happy event which once again brought the church family together in celebration.

Anne Weaver and Simon Ward



Fully Experienced Carer/Companion

- PART-TIME LIVE-IN • DRIVING LICENCE HOLDER •
- HOURS to SUIT • BABY/CHILD SITTING •
- EXCELLENT REFERENCES • FULLY INSURED •

Reliable, Kind and Caring

07748 743 732

High Quality, Professional Home Care and Companionship Enabling People in Mole Valley & Surrey to Remain Living Independently at Home



YOUR LOCAL PROFESSIONAL TREE HEALTH CARE SPECIALISTS

Felling, Pruning, Stump Removal, Planting, Logs,
Woodchip, Air Spade Services, Consultancy

Call us on 01306 741800
office@treeline.co.uk • www.treeline.co.uk



Your visiting PHYSIOTHERAPIST

SUE JUDD MCSP HCPC

40 years of experience.

All your requirements for elderly
mobilisation & post-operative
rehabilitation.

07834 227999 sue-judd@sky.com

EDE BROS

REMOVALS • STORAGE • SHIPPING

- Since 1926, Capel-based and family owned
- STRESS-FREE, local, national & worldwide
- Contact us for your **FREE** estimate...

01306 711293
edebros.co.uk

EDE BROS

REMOVALS • STORAGE • SHIPPING
Dorking, Surrey, England
01306 711293
www.edebros.co.uk

EDE BROS

REMOVALS • STORAGE • SHIPPING
Dorking, Surrey, England
01306 711293
www.edebros.co.uk

EDE BROS

REMOVALS • STORAGE • SHIPPING
Dorking, Surrey, England
01306 711293
www.edebros.co.uk



Gill and Paula would like to warmly welcome you to Aspen Care offering assistance to enable you to live in the comfort of your own home with care and companionship.

- A happy alternative to a care home
- Cover while your family or carer takes a holiday
- Recuperation and rehabilitation following a hospital stay
- All aspects of personal care medication and meal prep
- Dementia care disability chronic & critical conditions end of life care
- Accompaniment to appointments

Call for a chat to discuss your requirements.

We look forward to hearing from you.

01737 354821 info@aspensliveincare.co.uk www.aspensliveincare.co.uk

P J Oliver & Son

Window cleaning
House & Garden Maintenance
Roof Repairs, Guttering
Painting & Decorating
Ground works, fencing, hedge cutting,
and tree work

Also Pest control

Call Phil on 07722 158111

Email Oliviagarrett79@gmail.com



YOUR LOCAL FARM SHOP ON DENBIES WINE ESTATE

farm shop deli plant centre

Open daily 9.30 to 5.30 and Sundays 10 to 5 Free parking

Local produce, Seasonal food, plants and flowers

See our new Cutting Garden!

We deliver veg bags and more to the local area on Tuesdays and Fridays
see www.vgfarmshop.com or email vegbag@vgfarmshop.com for details

LOCAL • NATURAL • ETHICAL 01306 880720 www.vgfarmshop.com

GET SET FOR

The Mickleham & Westhumble Celebrations

1952 PLATINUM JUBILEE 2022

FRIDAY 3rd JUNE
STEPPING STONES
WESTHUMBLE
3-5pm

SATURDAY 4th JUNE
STEPPING STONES
WESTHUMBLE
From 2pm

SUNDAY 5th JUNE
MICKLEHAM
From 10am

Afternoon Tea Party
with Beacon Tart
Hat Competition (4pm)
Acoustic live music
by Mood Swing

Live Music
Large Screen Broadcast
Children's Fancy Dress
Outdoor BBQ

10am
St Michael's Church Service
11.30am
Tree Planting in the
new Graveyard at the
back of the Church.
Songs by the
Mickleham Choral Society.
12 noon
Lunch - free to all attending:
Hotdogs, Burgers, Chicken,
vegan option available.
From 2pm
Free Ice Cream
4pm
Finish

THE QUEEN'S
PLATINUM JUBILEE 2022

Mickleham & Westhumble Jubilee Celebrations

Join us at the Stepping Stones for Jubilee events

on Friday 3rd and Saturday 4th June

Booking now – Telephone 01306 889932

Friday 3rd June 3 - 5 pm

Afternoon tea party £19 per person

Listen to the great sounds of *Mood Swing* (live acoustic trio)

Glass of fizz on arrival Selection of finger sandwiches, crisps,
cream scones, pastries and cakes unlimited filter coffee and tea

Enter our free Jubilee Hat competition to win a bottle of Prosecco

Saturday 4th June from 3 pm

Barbecue £5 per person (ticketed event)

Live music from our regular AFB musicians 5 - 7 pm

Big screens inside and outside showing jubilee events

Book your table - filling up fast

Lemonade Stall

Last month we were able to include a last minute report on the lemonade stall set up at the entrance to Pilgrims Way by Erin to raise money for Ukraine and the World Wildlife fund.

We are fortunate that Erin has agreed to write a short note for this edition. She is going to set up again on the Jubilee weekend, so make sure you stop off for refreshment to support the very worthwhile efforts of Erin and her friends. Well done to all of you.

Hello, my name is Erin and I am 8 years old.

At Easter I ran a Lemonade Stall and I will open it again at the Jubilee weekend. It raised a lot of money. So far it's £820 for Ukraine and £85 for the WWF. My Dad helped build the stall with pallets and my Grandad helped me with the painting. I didn't do it alone. Shout out to my friends Valentina



and her brother Callan for helping me.

Thank you to everyone for supporting me and raising so much money. I really appreciated the gentleman who helped roll-up custom from passing walkers.

Erin

Norwegian Manhole Covers

I very much liked Charlotte Daruwalla's idea of manipulating drain cover photos in Photoshop and thus creating inspiration for textile art. My interest in drain/manhole covers began in Norway. We lived there for seven years during the 80s and I was blissfully unaware of the images on their manhole covers. It was only after David retired and we sailed up the Norwegian coast to the Nordkapp that I happened to notice that every Kommune (Administrative area) had its own individual design.

Thus Stord, an island midway between Stavanger and Bergen, where we had spent our final year in Norway, had a holly leaf design on its manhole covers and on the Kommune Offices. In Tromso they featured a reindeer

while in Svolvær in the Lofoten Islands the cod was king. Alesund, as befits a sea faring nation, chose a sailing vessel and Karmøy went for an abstract design which may well have a story attached to it.

Other subjects included a polar bear, a cormorant (or was it a shag?), a heron, a whale, townscapes, various other ships, a klippfish girl turning the fish drying on the rocks, a man leaping from rock to rock and many heraldic designs. If our councils showed the same imagination with their street ironworks my interest in them might be more understandable!

Barbara Jones

From top right to bottom left Stord, Alesund, Svolvær, Tromsø, and Karmøy



Charity Quiz Night Thursday 23rd June
See page 20 for details

Pashley Manor Tulip Festival



For our first tour of the year, Garden Shed members visited the award winning gardens at Pashley Manor, Ticehurst, for the annual Tulip Festival. Guided by Head Gardener Greg, our tour started by the manor house, currently owned by Mr and Mrs Sellick, and previously owned by the Boleyn family until the Queen's downfall in 1536. The timber-framed home has a Tudor front built in 1550, and it was extended in 1720. It is said that Anne Boleyn stayed here as a child.

Set in 11 acres, ranging from kitchen and rose gardens to wooded bluebell walks around lakes interspersed with interesting sculptures, including one of Anne Boleyn, it has all the ingredients of the English country garden. Borders were overflowing with tulips and perennials, and each garden was a 'room' planted with tulips in a different colour theme providing impressive arrays of hot colours or pastel blends. The planting and care of the garden was superb and we could see how much work is being done to maintain this beautiful historic site.

Within the walled garden, an inspiring



kitchen garden and small orchard provides fresh seasonal produce that supplies the on-site café. Following our tour we were able to enjoy the café, joined by a cheeky robin and hopeful duck looking for any crumbs.

Before leaving we visited Bloms marquee, who supply the tulips for the garden. Their informative staff helped smooth the purchase of bulbs that we will be planting in the autumn. The appearance of the tulips in our own gardens next spring will bring back memories of a very special day.



Letter to the Editor: The Alpha Course

I was intrigued to read the article in your May edition about the Alpha course. Evidently the author had much enjoyed the course.

I have heard lots of views on this course, varying from excellent to quite appalling, from thought-provoking to infantile. I have never been tempted to try it myself, because I was at both school and university with its chief propagator, the Reverend Nicky Gumbel of Holy Trinity Brompton (HTB).

I have never been able to reconcile Gumbel's views on homosexuality with the Christian concept of loving thy neighbour.

Of course HTB has many supporters and graduates, including the Archbishop of Canterbury and, I am told, the likely next rector of Leatherhead (and therefore of Mickleham).

The Church of England is a broad church, that can accommodate at one end of the spectrum Nicky Gumbel

and at the other the Reverend Richard Coles, formerly half of the excellent all-gay band the Communards.

We are indeed lucky in our established church. But it would be nice if it were to afford gay couples the facility of getting married in church, just like straight ones. Then it would be really be a church for all the community. And Alpha would be a suitable descriptor.

Will Dennis

A Confidential & Safe Space to Talk

Counselling • Mind & Body Healing
Reiki • Relax into Nature Sessions
Face to face/Online/Outdoors/Distance

Supporting you with compassion and understanding through challenging times



Call Judith Cobby
on 01306 882229
or 07790 614448

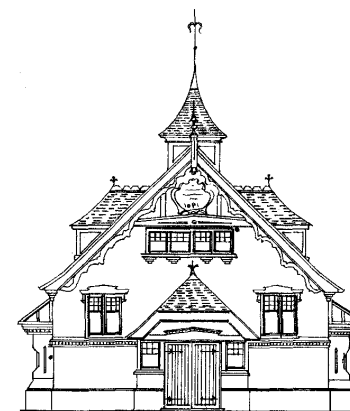
www.healing-inspiration.co.uk

TIM LANGLEY

Experienced craftsman

ANTIQUE RESTORATION
CABINET MAKING
FRENCH POLISHING

Free estimates collection & delivery
01372 457700 07960 486455



Mickleham Village Hall available for hire

Hall bookings
Table & chair hire

Deanna Darnell

07790 941 601

bookings@micklehamvh.co.uk
www.micklehamvillagehall.org.uk



Planning a party?

Equipment available for hire

China ~ Cutlery

Electric urn

Equipment hire
Mary Banfield

01372 373912

admin@micklehamvh.co.uk

Community Directory

BOX HILL AND HEADLEY HEATH (National Trust)

Lead Ranger – Mark Dawson

01306 885502

mark.dawson@nationaltrust.org.uk

Friends of Box Hill – Chair Lyn Richards

01737 842889

lyn@mra.uk.net

BOX HILL SCHOOL

Headmaster – Cory Lowde

01372 374814

HMPA@boxhillschool.com

DORKING CRICKET CLUB

Chairman – Andrew Homewood

homewooda@hotmail.co.uk

DORKING GROUP OF ARTISTS

Exhibition Secretary – Patricia Booth

01737 24491

patriciabooth100@gmail.com

DORKING LAWN TENNIS & SQUASH CLUB

Jim Cattermole

01306 883629

jim.cattermole@uwclub.net

DORKING RUGBY CLUB

Jim Evans

07789 176417

jim@flintcottage.net

THE GARDEN SHED

Pauline Davis

07759 646353

paulinemdavis@gmail.com

Susie Gowenlock

07768 923088

susiegowenlock@gmail.com

JUNIPER HALL FIELD CENTRE

01306 734501

enquiries.jh@field-studies-council.org

Head of Centre – Maddy Jones

m.jones@field-studies-council.org

Friends of Juniper Hall – Suzy Hughes

01483 281935

suzy@suzyhughes.co.uk

MICKLEHAM CHILDREN'S PLAYGROUND ASSOCIATION

Secretary – Sarah Parfitt

07767 891772

sarah@sarahparfitt.com

MICKLEHAM CHORAL SOCIETY

THURSDAYS 8 - 10 pm – MICKLEHAM VILLAGE HALL

01372 373106

Conductor – Juliet Hornby

01306 883932

Secretary – Anne Weaver

www.micklehamchoral.org.uk

secretary@micklehamchoral.org.uk

MICKLEHAM OLD BOX HILLIANS FOOTBALL CLUB

Secretary – John Atewell

01372 374745

MICKLEHAM PARISH COUNCIL

SEE WEBSITE FOR MEETING DATES

www.micklehampc.org.uk

Chairman – Rev'd David Ireland

01372 379381

rev.ireland43@btinternet.com

Parish Clerk – Feena Graham

clerkatmpc@gmail.com

MICKLEHAM PARISH MAGAZINE

Editor – Sue Tatham

01306 882547

editor@micklehammag.co.uk

Co-Editor – Charlotte Daruwalla

01306 884025

editor@micklehammag.co.uk

Administrator – Vacant

MICKLEHAM VILLAGE HALL

Chairman – Ben Tatham

01306 882547

chairman@micklehamvh.co.uk

Bookings Manager – Deanna Darnell

07790 941601

bookings@micklehamvh.co.uk

Ballroom Dancing Latin American Dancing Professional Training [IDTA]

Private lessons on
Tuesday afternoons and
Sunday evenings

At Mickleham Village Hall
Dell Close Mickleham Surrey RH5 6EE
07748 867 732
vmvdancing@gmail.com



IDTA Qualified Teacher

Rowlatt Garden Services

RGS

EST.1985

*Gardens large and small
we maintain them all*

All aspects of private and commercial garden
and estate maintenance landscaping undertaken
Fencing grass & hedge cutting

Telephone: 01737 841524 Mobile: 07887 838666
References available upon request



Joseph

De Decorators

• Painting • Decorating • Wallpapering •
Plastering • Tiling

Mickleham based 40 years' experience
01372 372331 07973 358 932



Regular Lawn Mowing
Lawn Care & turfing
Pressure Washing
Hedge Trimming

General Garden Maintenance

phil@philsmowingdorking.co.uk
07905 160765



KING WILLIAM IV

Hello friends and neighbours

Great to see the sun out allowing so many people to enjoy our lovely new lower patio. The feedback received was great, thank you. This area now has the same wonderful views as our upper patio as we have raised the base in height and lowered the hedges at the front – it is also proving to be quite the suntrap.

The new menu with its lighter dishes with more emphasis on fish and salads is being enjoyed. It is also nice to see our famous 'teardrop' dessert return - a home crafted Belgian chocolate tear-shaped shell filled with Chantilly cream and seasonal berries. Yum! Lazy live music will be on now every Sunday from 4.30 to 7.30 pm – early booking is essential.

See you soon Eamonn and Anne

Byttom Hill Mickleham 01372 372590 www.thekingwilliamiv.com

ST MICHAEL'S CHURCH

*within the United Benefice
of Leatherhead and Mickleham*

INCUMBENT – VACANT

PARISH PRIEST

The Rev'd Dr Sandra Faccini * 01372 4176

NB Corrected mobile number 07763 488961

parishpriest@micklehamchurch.org.uk

* Main working days: Monday, Tuesday and Sunday

CHURCHWARDENS

Timothy Mathieson 07555 597163

TimothyMathieson@aol.com

Catherine Diffey 07790 473167

Mickleham@diffey.me.uk

PARISH ADMINISTRATOR

Alison Wood 01372 376443

admin@micklehamchurch.org.uk

PCC SECRETARY

Elizabeth Moughton 01306 883040

pccsecretary@micklehamchurch.org.uk

TREASURER

Richard Siberry 01372 375303

pcctreasurer@micklehamchurch.org.uk

ORGANIST

David Fishwick 0208 7732420

organist@micklehamchurch.org.uk

WEDDINGS CO-ORDINATOR

Elaine Machin 01372 724972

weddings@micklehamchurch.org.uk

BAPTISMS CO-ORDINATOR

Vickie Leney 01306 884054

baptisms@micklehamchurch.org.uk

FUNERALS ORGANISER

Brian Wilcox 01372 374730

dbrianwilcox@btinternet.com

WEBSITE MANAGER

Kelvin Pritchard 07770 280410

website@micklehamchurch.org.uk

www.micklehamchurch.org.uk

*For information about services for other
denominations see website pages.*

Search on 'Churches Together Mole Valley'

REGISTERS

WEDDING

23rd April James Buchan and Gemma Roach



CALENDAR

JUNE

3	Friday	Queen's Platinum Jubilee	Westhumble celebrations at the Stepping Stones Pub See p 9
4	Saturday	Queen's Platinum Jubilee	Westhumble celebrations at the Stepping Stones Pub See p 9
5	SUNDAY – Pentecost/ Queen's Platinum Jubilee		Tree planting in Westhumble See p 17
		9 am	Celebration Service
		10 am	Tree planting in St Michael's churchyard
		11.30 am	Songs by the Mickleham Choral Society
		12 noon	Lunch
		from 2 pm	Free ice cream
		4 pm	Celebrations end
7	Tuesday	7 pm	A short service of Night Prayer(Compline)
12	SUNDAY – Trinity Sunday		Holy Communion
		10 am	Matins at Westhumble Chapel
		11.30 am	Confirmation Service
		6.30 pm	
<i>Copy deadline for July/August magazine</i>			
13	Monday	3 pm	Tea at 3 at Garden Corner
18	Saturday	9 am	Women's Breakfast at the Stepping Stones
		8 pm	Mickleham Choral Society Summer Concert at the village hall
19	SUNDAY – First Sunday of Trinity		Holy Communion in church
		8 am	Holy Communion
		10 am	Charity Quiz Night at King William IV
23	Thursday	7.30 pm	Men's Breakfast at the Stepping Stones
25	Saturday	9 am	
26	SUNDAY – Second Sunday of Trinity		BCP Holy Communion at Chapel
		8 am	Holy Communion
		10 am	Open Gardens in Westhumble
		2 to 5 pm	Ashleigh Grange Garden open
29	Wednesday	2 to 5.30 pm	

Dates for your diary

1-3 July Gardens open at Ashleigh Grange and Ashcombe. For details see page 23
9 July Flower Show

MEMBERS OF THE PAROCHIAL CHURCH COUNCIL

Sarah Blake	Mark Day
Andy Diamond	Catherine Diffey
Caroline Jones	Vickie Leney
Elaine Machin	Tim Mathieson
Beverley Mehta	Elizabeth Moughton
Kelvin Pritchard	Richard Siberry

ST MICHAEL'S CHURCH COMMUNITY GROUP COMMITTEE

Mary Banfield	01372 373912
	mgbbmw@aol.com
Kay Cain	07736 281752
	kay__jay@hotmail.co.uk
Mark Day	07852 117249
	mickleham@hotmail.com
Andy Diamond	07789 775354
	diamo1@hotmail.co.uk
Frances Presley	01306 882473
	jasempres@gmail.com
Amy Ward	07709 199292
	amycatrionaward@gmail.com

ST MICHAEL'S CHURCH COMMUNITY GROUP HELPING HANDS INCLUDING FOOD FOR FRIENDS *A service for all residents of Mickleham and Westhumble*

Examples of services we offer:

- Essential shopping / collection of prescriptions
- Changing library books
- Small tasks: eg changing fuses, altering clocks etc
- Dog walking
- Visiting / befriending
- Home-cooked meals for local families going through difficult times

Requests to

Frances Presley 01306 882473

*More helpers needed – please contact
Frances if you can spare some time.*

Community Directory

Continued from page 13

MICKLEHAM & WESTHUMBLE BADMINTON CLUB

Membership Secretary Sarah Blake tinkerbell0044@hotmail.com

MICKLEHAM CRICKET CLUB

Membership contact Will Dennis 07903 842674
will@micklehamhallfarm.co.uk

MICKLEHAM & WESTHUMBLE HORTICULTURAL SOCIETY

Chairman – David Kennington 01372 362309
www.surreycommunity.info/mwhs davidkennington144@gmail.com

MICKLEHAM AND WESTHUMBLE LOCAL HISTORY GROUP

Chairman – Ben Tatham 01306 882547
ben@thetatham.co.uk
www.micklehamwesthumblehistory.co.uk/community/mickleham-
westhumble-local-history-group-13483/home/

MOLE VALLEY DISTRICT COUNCIL

Councillor Elsie Rosam 01306 885001
01306 885695
elsierosam29@gmail.com

THE ARTS SOCIETIES (FORMERLY NADFAS)

Betchworth – Mary Venning 01306 883301
Dorking – Sue Tatham 01306 882547
Leatherhead – Sarah Sheridan 01306 883699

ST MICHAEL'S CHURCH OF ENGLAND (A) INFANT SCHOOL 01372 373717
info@stmichaels-dorking.surrey.sch.uk

Friends of St Michael's School – Chair Amy Rieley
friendsofstmichaels2017@gmail.com

ST MICHAEL'S COMMUNITY NURSERY

WEEKDAY MORNINGS – MICKLEHAM VILLAGE HALL
Supervisor – Hilary Budd 01372 361021
stmichaelsnursery@btinternet.com

SURREY COUNTY COUNCIL

Councillor – Hazel Watson 03456 009 009
01306 880120
hva.watson@btinternet.com

SURREY WILDLIFE TRUST

01483 795440
info@surreywt.org.uk

WESTHUMBLE RESIDENTS ASSOCIATION

David Allbeury 07860 227451
westhumble.neighbourhood.watch@gmail.com

WESTHUMBLE NEIGHBOURHOOD WATCH

Lead Co-ordinator – David Allbeury 07860 227451
westhumble.neighbourhood.watch@gmail.com

ADDITIONAL CONTACT INFORMATION

CITIZENS ADVICE

Dorking – Lyons Court 01306 732302
Leatherhead – Swan Mews High Street 01306 732301

CRIMESTOPPERS

POLICE Non-emergencies 0800 555 111

(often quicker to make online report) <https://report.police.uk/>

Neighbourhood Specialist Team – Dorking Rural East

General enquiries molevalley@surrey.pnn.police.uk

NHS Urgent and emergency care 111

Babysitting by local youngsters

Those listed below are at least
14 years old.

Gracie Owen **07790 900649
Annabelle Prosser*

07443 634179

Maisy Presley* 07720 657327

Martha Pearce 07514 080005

Rory Lee ** 07973 360950

Ellie Kim 07773 395575

Chelsea Edwards 07834 695816

Edward Moran 07740 088124

Daisy Armitage **07580 473812

* Holidays only
** Parent's mobile number

If you would like to add your
name to this list please get in
touch with Sue Tatham

01306 882547

editor@micklehammag.co.uk

No Charge

Advertising in the Parish Magazine

Please contact

Sue Tatham (as above)

Small ads: a nominal fee is
charged for ads where items or
services are bought or sold.

We have been advised to print
the following reminder:

*We cannot guarantee the
quality of the goods and
services offered by our
advertisers.*



Roger Ivor Clifford Howell 1932 - 2022

At Roger's funeral at the United Reformed Church, Dorking on Friday 6th May, Sandra, Roger and Rhona's daughter-in-law, gave the tribute for Roger on behalf of the family. These are extracts:

'Roger Ivor Clifford Howell (long-time resident of Westhumble) was born in his grandparents' house in Stratford, London on 6th May 1932. He was an only child and at the age of 3 he moved to Rainham in Essex. When he was 19 Roger moved to Huntingdonshire, where he passed his test for lorry and tractor driving and where his passion for farm work began. No-one could reverse a trailer or caravan better than he could. Later in life, how he got the caravan down the lane to his house, through the gates, round the grass bank and park it behind the garage amazed many.

'In 1954 he went on holiday to Worthing with his father and Aunt Ivy. While they were visiting the lifeboats they got talking, by coincidence, to Rhona's parents and grandparents (visiting from Scotland). Rhona was not with them, but her mother showed them a photo of her. Roger was smitten and asked if he could write to her. This was the beginning of a beautiful courtship.

'They exchanged letters for six months before meeting and Roger immediately proposed. Rhona's reply was 'I will have to think about it' as at the time she could not imagine marrying an Englishman. After the second proposal and many more in letters they finally got married on 5th April 1958 and were very fortunate to have 64 years together. Soon after they married, they had their two children, Rhona and Bob, and became a family unit, making many memories. Roger was completely devoted to Rhona throughout their married life. He greatly enjoyed his role as a grandad to Ben and Ellie and as they got older was so proud of their work ethics and what they have achieved.

'Over the last few weeks, I have asked his family and friends for their fond memories:

- Cousins Joan and Dorothy - Roger was like a brother to us, and we can remember sleeping with him in the

cellar during the air raids. He would do anything for anybody.

- Best man Bob McDonald - Such a trusty good friend. I was honoured to be his best man and very privileged to have had our friendship.

- His daughter Rhona - a true father and farmer, outstanding in his field.

- Son Bob - A man of few words but many actions, always there with any practical solution.

- Grandchildren

Ben - My grandad always was there to give me the best advice and I would always admire the way he would look at my Gran after all the years of being together with such love.

Ellie - All men should be like my Grandad a true gentle man. I think we can all agree my Grandad was a caring selfless person who we all loved dearly.

Luke - You always supported me and made me feel so welcomed.

Gill - I loved Grandad's smile

'Personally, I (Sandra) always felt I could talk about anything and everything with Roger and he was more streetwise than he let on!

The day of the funeral would have been Roger's 90th birthday, a day he was so keen to see and that is why we chose this day to say goodbye to a man that was loved by all, admired, and respected by many. Westhumble has lost one of its most humble and we are all the poorer for it.'

Rev'd Ted Bellingham, the presiding minister and fellow Westhumble resident, who had known Roger and Rhona for many years, spoke of Roger's strong and steadfast Christian faith. How as a practical type of person he had expressed his belief in his tireless work for the United Reformed Church in Dorking, particularly in maintaining the garden and all sorts of everyday jobs around the building. After months of illness his greatest wish was to be able to drive again so that he and Rhona could return to worship services at the church. He will be sorely missed.

Roger was a very good neighbour and enjoyed keeping up with friends whose walking routes passed his



lovely cottage garden, gnomes and all. Deepest condolences to Rhona and all the family for their loss.

Community News

Congratulations to :

• Rachel and Maurice von Bertele of Westhumble who welcome their new daughter, Lara Julia Ann. Lara was born at the end of January

• Doug and Elly who are pleased to announce the birth of their beautiful daughter Persephone Maria McIlwraith-Jay. She was born at home in Westhumble on 23rd April. A ray of spring sunshine, say Doug and Elly

• last but not least, Oliver and Leanne Dodd of Mickleham who welcomed a new son, Jacob, born on 4th May. A brother for 5 year old Isaac.

Farewell to Tim and Louise Bright who have moved from Westhumble to West Sussex.

Westhumble's Platinum Jubilee Oak Tree

Thanks to Neil Mason we now have a platinum jubilee Oak tree to plant. The planting will take place on Sunday June 5th at 9 am in the 'bonfire' field and will be close to the entrance to the field from Adlers Lane. All are welcome to attend the planting.

Poo-poo-poo

Photographer Martyn Richards



This bird, a hoopoe, was spotted on Headley Heath in April by Lyn and Martyn Richards. Lyn is chairman of the Friends of Box Hill. Hoopoes are rarely seen in this country although they are said to be very common in Europe, Asia, and Africa.

Their plumage makes them inconspicuous in light and shady surroundings. They raise their crown in flight and when calling 'poo-poo-poo'. Their Latin name is *Upupa epops*.



Bunting creation - see page 20



Can you translate this diagram into words? Say what you see.

KNEE
LIGHT

Answer on page 26

Westhumble Open Gardens

Sunday 26th June 2022
2 pm to 5 pm

Refreshments and Plant Sale

Admission £5 per person to visit all participating gardens.
Programmes containing a list of the gardens including a map, are available from Pauline, Susie and Cathy now and at every participating garden on the day.

All proceeds will go to The Leatherhead Youth Project

See our website for details www.gardenshed.club

Further Details from

Pauline Davis 07759646353 or paulinemdavis@gmail.com



Surrey Artists Open Studio

Genevieve Brown, Diana Croft, Liz Holloway, Barbara Liddle, Judy Staight, Sinead Tobin, and Renate Wilbraham, who are part of ShedArt Gallery will be opening their studios on limited dates from 11th June for SAOS 2022.

ShedArt, Harlow House Barn, Dukes Road, Newdigate, Surrey, RH5 5BX
Full details of the dates can be found at <https://surreyopenstudios.org.uk/artist-trail/south-dorking-art-trail/> and <https://www.shedartgallery.com/>



Mickleham Parish Council Chairman's Report May 2022

The past year has been a busy one for the Mickleham Parish Council, with a number of issues needing to be resolved.

Covid restrictions clearly continued to affect a number of activities, although the council has been meeting in person for the whole of the year, albeit socially distanced for most of the year.

At our first meeting of the year on 24th May 2021, Graham Clark was elected to the role of vice chairman and David Ireland and David Ottridge re-elected as chairman and RFO respectively.

Working groups were established to explore certain issues, including applications to Surrey CC's 'Your Fund' for additional equipment for the playground and the establishment of suitable barriers to secure footpaths and bridle paths in our area. The second of these applications was eventually withdrawn and the first failed to get funding.

The Working Group to co-ordinate the consultation and development plans in Norbury Park continues to function under the guidance of John Lowes but the consultation process has been delayed on several occasions.

The Community WhatsApp group is thriving and the Church Community Group has organised a number of successful activities, including a picnic at Juniper Hall, the Harvest Supper, advent windows and most recently a skittles evening.

Traffic calming on the Old London Road remains a challenge. The Vehicle Activated Speed Camera has been installed; the Community Speed Watch team is now back in action and the proposals for additional traffic restrictions are due to be implemented very shortly.

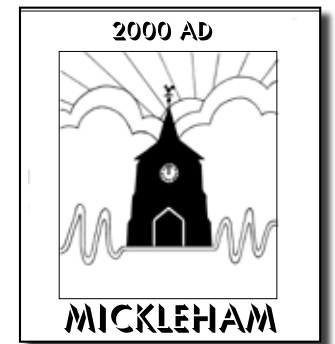
The trustees of the Mickleham Playground Association maintain this much-used facility and have a number of new volunteers to assist with its regular safety checks. Two acts of vandalism were reported and the damage addressed.

A new council Notice Board at the junction with School Lane and Bytton Hill was installed and is much used.

A number of other matters have arisen since the last Annual Parish Meeting, including the appointment of a new parish priest, the Rev'd Dr Sandra Faccini. The new café and coffee shop, 51Degrees North, opened in April and is much appreciated, as is the new management of the Running Horses by the Little and Large Pub Company.

The 'Local Plan' has been carefully examined and a response submitted by Mickleham Parish Council in November 2021. The final report on the 'Local Plan' is due later this summer.

The Boundary Review Commission's proposals have also been thoroughly examined and a response made both by the council and by individual members of the community.



The Queen's Platinum Jubilee is to be celebrated on June 3rd to 5th with a number of joint community-based activities, including a tea party and live music event in Westhumble and a Civic Service and Big Lunch in Mickleham. To celebrate this historic occasion Mickleham Parish Council has presented a tree, which is to be planted in the new churchyard extension.

Other issues have also been discussed but time prevents the writer of this report from detailing them all. Suffice to say that one change decreed from on high demotes your chairman to an item of furniture in future reports!

Thanks must be expressed to our parish clerk, Feena Graham, for keeping us so well informed and in order and to my fellow councillors for their continuing hard work on behalf of the community.

David Ireland - Chair(man)



Juniper Hall Field Studies Council Part-time catering and hospitality jobs available

Great benefits, as can be seen from the links below, and a great team
A lot of flexibility in shifts/ number of hours per week and days of the week
The links are: Hospitality & Catering Assistant - <https://bit.ly/3xkDGs2>
Casual Hospitality & Catering Assistant - <https://bit.ly/3KIWD1i>
Please fill in the form attached to the links
or email to ask questions g.macarty@field-studies-council.org

1952 AND ALL THAT

A concert to celebrate
the Queen's Platinum Jubilee and more!

THE LADYBIRDS CHOIR

directed by Helena Twentyman

Saturday 25th June at 3 pm

United Reformed Church Hall, West Street, Dorking

Tickets £7.50 from 01737 843662

Supporting MARY FRANCES TRUST

Mike Palmer Electrical Services

Part P registered electrician



From additional lighting and sockets
to complete rewires

Fully insured Registered with the NICEIC

07866 930483 mike@mikepalmer.biz

Boxhill Way, Strood Green, Betchworth RH3 7HY

The Charity Pub Quiz is Back!

On Thursday 23rd June, the King William IV pub in Mickleham will once again kindly play host to our charity pub quiz. This year the quiz aims to raise funds to be split equally between St Michael's School and the Mickleham Children's Playground Association. It will be the first fundraising event for the playground since 2019 (after the planned 2020 quiz was sadly cancelled due to Covid) and will hopefully provide funds for ongoing and future maintenance needs.

With just a month to go it is time to plan your team (teams of 4-6 recommended), get the date in the diary and buy your tickets. Tickets cost £10 per person with every penny raised being split between the two charities. A prize for the winning team will be available and we will once again be hosting a charity raffle with the opportunity to take home a number of treats.

We hope to see as many of you as possible! Thanks to Eamonn and Anne's brilliant addition of the covered outdoor area, our capacity is much increased this year so competition should be yet more fierce! This promises to be a great fun evening, in aid of two great children's causes and a chance to pit your wits against Mickleham's finest!



IT'S BACK... CHARITY QUIZ NIGHT IN AID OF THE PLAYGROUND & ST MICHAEL'S SCHOOL THURSDAY 23rd JUNE 7.30 – 10 pm KING WILLIAM IV PUB

Tickets cost £10 per person with proceeds split between the village school and playground charity

Tickets available in advance only
from the King Willy 01372 372590

www.thekingwilliamiv.com

or micklehamchildrensplayground@gmail.com



Busy Sewing Bees



People have been busy making bunting by the mile for the Jubilee. Here are some of their products with the names of their creators. They have suffered for their art - bunting back (leaning over the sewing machine) and bunting blisters (fingers). The stitchers, including Mary Flint, above, relaxed by dancing to a Tina Turner number.

See also the flag made by Tracy O'Hanlon on page 18

CRYPTIC DELICACIES



Last month's puzzle had golden squares pointing to a HOUSEHOLD NAME famous for the films DADDY LONG LEGS, EASTER PARADE and TOP HAT. There was also mention of GINGER ROGERS with whom he would DUET in SONG and DANCE, and he is known for 'Puttin' on the RITZ'. All of which I hope gave a fairly clear pointer to FRED ASTAIRE (this time I chose to give you his stage name rather than the too many letters in his birth name of Frederick Austerlitz - his father was from Austria and arrived at Ellis Island in New York in 1893, six years before Fred the dancer was born). Fred Astaire had his big break on Broadway in 1917 alongside his sister Adele. Bizarrely, given his stellar career, his only Oscar nomination was in a supporting role as a conman in *The Towering Inferno*. One of his last performances was also as a conman, this time in *Battlestar Galactica* - his grandchildren were huge fans of the show and to please them he contacted the producer to ask for a small guest part only to end up having a whole episode written around him. There is said to be a clause in his will stipulating that there should be no portrayal of his life on film, but a biopic was announced in December 2021 with Tom Holland bravely trying to fill some very twinkling shoes (the latest Spiderman does have some previous though: his first major role was as the lead on stage in *Billy Elliot: the Musical*).

Here are some of the clues worked out, with definitions underlined:

4 Having an odd show of pride when being led by big business is typically American (5,3)

APPLE PIE

'an odd show' of 'Pride' = PIE (i.e. only show odd letters), 'big business' = APPLE. Funnily enough the OED gives the first use of this idiom as being 'For Ginger Rogers, it's an apple-pie American look.' (from 1960). Given that the colonists of North America would have brought European recipes for pies made with apples it seems odd to pick

this as typically American rather than 'pumpkin pie' whose main ingredient was only discovered by the colonists on their arrival.

10 Trail left by golden 10D after a routine performance? (4-5)

HOOF-MARKS

This was more a cryptic allusion than a standard 'cryptic + definition' clue. 'golden 10D' = FRED ASTAIRE as 10 DOWN was HOUSEHOLD NAME and golden referred to the golden squares. Answering this relied on your knowing that professional dancers, particular tap dancers, are known as 'hoofers'. I knew this despite not by any means being an aficionado of dance so I assumed that it was general knowledge. Someone who has done a lot more tap dancing than me has made me aware that this may not be the case. Luckily, I had waylaid any problems by making sure that one of the golden squares fell on the F of HOOF and with crossing letters that gave a good leg-up with H_OF.

11 Was escort embracing centre forward in a lascivious way? (4)

LEWD

'Was escort' = LED, 'centre' points to the central letter of 'forWard' = W

12 Heard 11-0 is how this game turned out (4)

LUDO

11 = the answer to clue 11 = lewd, which with 0 = O sounds (approximately) like LUDO

15 State developed casual agreement in the production of cheese (7)

GRUYÈRE

'developed' = grew, 'casual agreement' = yeah, and if you state (or say) grew-yeah you get an approximation of GRUYÈRE.

7 March is when Sally is caught running after Dad (6)

PARADE

'Dad' = PA, 'Sally' = raid, 'caught' is an indicator of a homophone (as in 'I caught what he was saying') so RADE follows (or runs after) PA.

29 For instance: 'The 39 Steps to Electrify Something on a Postbox' (8)

THRILLER

Note that you ignore the punctuation so that the definition-by-example shown by 'for instance' only applies to 'The 39 Steps' and not the rest. 'Electrify' = THRILL, 'Something on a Postbox' = ER (i.e. Edward Rex or Elizabeth Regina). Amazingly there have only been 3 pairs of letters moulded onto postboxes since they were first introduced in 1852: VR, GR and ER, with regnal numbers also being included, though not systematically - in fact George V boxes are nearly all just 'GR' without the V. (For infinitely more detail than I am able to give here, please see the website of The Letter Box Study Group, www.lbsg.org.)

THRILLER is also a song and album by Michael Jackson, someone who definitely knew he owed a debt to Fred Astaire. You can see it in the video for his song *Smooth Criminal* which references the clothes and moves from Astaire's 1953 film *The Band Wagon* (see YouTube). And the day after the King of Pop debuted his Moonwalk on TV in 1983, Fred Astaire rang him up to say 'You're a hell of a mover'. Michael Jackson unsurprisingly thought that was the greatest compliment he had ever received in his life and he later dedicated his autobiography to Fred Astaire.

If you want to see the joy of someone showing themselves fully alive, there are always reminders of Fred Astaire's genius on iPlayer.

I hope this helps and it would be great to get any feedback via andrewt@andrewtatham.co.uk

Andrew

Do you need a plasterer?

Over 25 years' experience working on extensions, renovations, new-build and conversion projects for builders and domestic customers alike.



Our work is to a high standard and we are fast. Give Chris a call for a free, no obligation quotation.

**CHRIS C GUY
PLASTERING LTD**

ALL ASPECTS OF INTERNAL & EXTERNAL PLASTERING
07740 860560 chrisguyplastering@gmail.com

We provide the best possible care for your feet

**Book your appointment:
01372 454583**



**Bookham
Chiropody & Podiatry Clinic**
Diagnosis, Expert Treatment & Professional Care
for Your Feet

29 High Street, Great Bookham KT23 4AA
www.bookhamchiropody-podiatry.co.uk

Domestic Appliance Repairs

30 years' experience repairing and installing
all gas and electric domestic appliances



- Cookers Microwaves
- Dishwashers
- Washing machines
- Fridges / Freezers
- Water coolers
- Coffee machines
- Tumble dryers

Contact: Andy 07895 719706
andy@kirksdomestics.co.uk



07871 051661 / 01372 458616
timskerrittgroundworks.co.uk

TimSkerritt
LANDSCAPE & GROUNDWORKS

Turn your vision into a reality

Tim Skerritt Landscape & Groundworks offers a comprehensive range of services to both commercial and domestic clients across Surrey.

From hard landscaping to extensive site excavations, we offer a high quality, honest, reliable and competitively priced service, guaranteed to meet all your needs. Contact us today to find out more.

A25 ELECTRICALS Domestic & Commercial

- Electrical Installations
- Alterations
- Expertise in Fault Finding
- Condition Reports

07760 852 540
Part P Approved

**PAINTING
DECORATING**

ANDREW CLARK 07800 796 737

INTERIOR & EXTERIOR • CARPENTRY • HANDYMAN

Dorking Pest Control Services

Local Authority Approved Contractors



Our Services include: Wasps Bee Swarms Hornets Rats Mice
Squirrels Fleas Flies Ants Cockroaches Bed Bugs
Rabbits Moles Foxes and Deer



• Domestic Commercial and Industrial • Contract Work • Preventative Control Programmes

Experts in pest control throughout Surrey

Office: 01306 743001 Ivor: 07710 117491 Chris: 07971 519415

www.dorkingpestcontrol.com

Gardens in Westhumble open through the National Garden Scheme

ASHLEIGH GRANGE ONLY

Wednesday 29th June (2 pm-5.30 pm)

Admission £5 – Home-made teas

ASHCOMBE ONLY

Saturday 2nd July (1 pm – 5 pm)

Admission £5 – Home-made teas

Plants for sale. Dogs allowed on leads.



combined opening

ASHLEIGH GRANGE and ASHCOMBE

Friday 1st July (evening opening 6 – 8.30 pm)

Admission £10 - glass of Wine included

and

Sunday 3rd July (1 pm-5 pm)

Admission £8 - Home-made teas or wine & Pimms

FLOWER SHOW



Mickleham and Westhumble Horticultural Society
(www.mwhortsoc.org)

**Saturday
9th July**

Bring exhibits by 10:15. Show opens at 2:30.

**Teas & Cakes, Plants,
Many Other Attractions
Mickleham Village Hall**

Stallholders wanted for the Summer Show

As part of the Summer Show which this year is on Saturday 9th July, we traditionally invite countryside-themed stallholders to show an attraction or sell their wares for which we do not charge any entry fee. Attractions most prized are the Reigate Bee Keepers who will generally come and show a hive of bees and sell locally produced honey. In past years we have had owls and ferrets and other animals, but they have fallen by the wayside post-Covid, so we are looking for any such attractions to take their place.

Is there anyone out there who can help or knows of someone who could show animal(s) and talk about them, especially to our younger audience who are always fascinated by the natural world and animals?

Similarly there are always spaces for people to sell their wares: plants, jams and preserves, home crafts or skills. It all adds interest to the show which is always well attended so a captive audience is guaranteed. Do not forget that there is no charge, so any sales are all profit for the stallholders. If you are interested or know of someone who might be, please let me know at 01372 362309 or davidkennington144@gmail.com

David Kennington

10 Year
Manufacturer's
warranty available
with any new boiler
Oil, LPG and Gas Registered • Consult • Design • Install • Maintain

SEENERGY
INNOVATIVE ENERGY SOLUTIONS

Call for a free quote on
01306 735499
www.seenergy.co.uk
enquiries@seenergy.co.uk

EMERGENCY
24
HOUR
SERVICE

Best Buy
Which?
Gas Boilers September 2018

Get IT Fixed, Get IT Connected
Expert Repair & Maintenance




Brockham based. No call out charges. Fully transparent quotations with no hidden costs. We make technology work for you.

Call us now on **01737 845980** ChalkHill Systems
www.chalkhillsystems.co.uk

M & R BUTLER

- GENERAL HOUSE MAINTENANCE
- EXTERNAL & INTERNAL DECORATING
- BESPOKE CARPENTRY
- LOCAL REFERENCES
- 40+ YEARS EXPERIENCE

07776256131 / 07896015771



TONY WINCH
CARPENTER, JOINER
& CABINET MAKER
www.tonywinch.com
01306 742373
07969 016 924

Building Plans
For home improvements & extensions
Including planning & building regulations
Fast efficient service at competitive rates

MICHAEL LLOYD CEng MICE
For free consultation:
Phone: 01483 205479 or 07958 791 402

RWP
Extensions and alterations often require a
Structural Engineer

Robert Wynter & Partners Ltd
01306 879875
Book House Vincent Lane
Dorking RH4 3HW

remedial roofing
For people with roof issues and deficiencies

- New roofs – slate & tiled roof specialists
- All roof repairs, moss removal & gutter clearance
- Flat roofs, traditional felt & GRP fibreglass
- New uPVC Fascia, soffit & guttering

Obtain an up-to-date report of remedial roofing on www.checkatrade.com

ALL WORK GUARANTEED
Call us today for a FREE quotation on:
01306 304736 | 07852 833802
info@remedialroofing.co.uk www.remedialroofing.co.uk

Confederation of Roofing Contractors
The Premier Roofing Trade Association in the UK
All Members Offer Insurance Backed Guarantees

Cheekatrade.com
SURREY
TRADING STANDARDS
APPROVED



Hen House Chat

This month I am going to do a bit of a hen house chat.

Now those that are chicken keepers amongst you and indeed those that prefer a free-range egg, will be aware that due to avian flu, poultry, including our domestic 'backyard' chickens have been in their very own lockdown. To prevent the spread of avian flu all poultry keepers were required to keep their birds either netted or housed and kept away from wild birds. This was an impossible task at the nursery, so the chickens spent almost 5 months in Brockham with my own chickens. Hurrah the ban was lifted on 2nd May, which meant the nursery chickens could return. However, what I can only describe as a well-read Brockham fox was also clearly aware that chickens were now free ranging, took his opportunity, and snuffled two from my garden. I hope that the possibly

more rural foxes of Mickleham have no access to newspapers, as nursery is now hosting my bantam chickens as well as the remaining nursery ones. Luckily, we have bred replacements! You will see they have grown significantly from the fluffy pictures in last month's magazine.

Nursery children are usually quite matter of fact about the circle of life, certainly St. Michaels children are! This month they have also experienced a dead rabbit in the forest school area. Lots of discussions regarding how it might have died and why whatever ate the head, chose to eat that bit. We also understand that a fox might have babies to feed, but we hope it catches wild rabbits and not our pet chickens! Now to more traditional learning! This month we have been learning lots of number rhymes, props make learning more visual and fun.

Hilary Budd





Mickleham Village Hall Dell Close

Weekdays 9.15 am - 12.15 pm (term time)

WITH OPTIONAL LUNCH CLUB

On Mondays and Thursdays there is the option for children to stay until 2.45 p.m.

Maximum 26 children per session

• playing naturally • learning naturally

We offer an excellent range of pre-school activities for 2½ to 5 year-olds where they can learn through play in an informal friendly atmosphere.

Contact us for more information about admissions

01372 361021 www.stmichaelscommunitynursery.co.uk

Solution to the May crossword

Across: 1 Rogers 4 Apple pie 9/18 Daddy long legs 10 Hoof-marks 11 Lewd 12 Ludo 13 Endue 15 Gruyère 16 Ritz 19 Shoo 20 Pimento 23 Onion 24 Duet 25 Song 27 High-class 28 Dance 29 Thriller 30 Sevens

Down: 1 Red flags 2 God-awful 3 Rays 5 Photographers 6 Lumpectomy 7 Parade 8 Easter 10 Household name 14 Mechanical 17 Announce 21 Top hat 22 Ginger 26 Edge

BRAIN TEASER answer: Neon light

Suitable items for the foodbank collection

Tinned veg / tomatoes / soup / sauces / baked beans	Washing-up and cleaning products
Powdered milk / UHT milk (green and blue only)	Tissues / paper towels / tampons
Rice pudding / long life sponge puddings	Men's / women's toiletries
Coffee / tea bags / long life fruit juice	Laundry products
Pasta / rice / pulses / instant mash	Nappies
Jam / honey / marmalade / spreads	Pet food
Sugar (500g bags only)	

**Please do not include
out-of-date items or those
that require refrigeration**



LOCAL FOOD BANK COLLECTION POINTS

MICKLEHAM

Garden Corner off Old London Road
Mary Banfield 01372 373912

WESTHUMBLE

St Anthony, Pilgrims Way
Sue Tatham 01306 882547

Vivien Cresswell Made-to-measure Soft Furnishings

Curtains Roman Blinds Cushions



Extensive range
of fabrics

01737 843858

info@cresswellscurtains.co.uk

www.vivienecresswell.co.uk

Julie Watts Family Law

AN AFFORDABLE AND EXPERIENCED PROFESSIONAL
ALTERNATIVE TO TRADITIONAL SOLICITORS

• Divorce • Arrangements for children • Finances
• Court Proceedings

PROUD TO PROVIDE A DIFFERENT KIND OF SERVICE

• Affordable fees • Straight-talking advice
• Practical real support

Contact me for a consultation

07808 572157 juliewattsfamilylaw.co.uk

A Busy Summer Term

Now that the summer term is in full swing, we are trying to take part in as much outdoor learning as possible. Our summer topic in Year 1 and 2 is 'Dig it up'. This is both a geography- and science-based topic. In geography, the children are learning about farming life and comparing rural settings to towns and cities. In science, the children are learning about plants. They have been investigating the parts of a plant and how they grow and thrive. To bring this to life, the children have been observing plants in the school environment. They have been learning the names and noticing how many different plants we actually have in our setting. The children have also planted their own beans and cress. They are thoroughly enjoying watching them grow and are keeping a diary to document the changes.

In our Early Years classroom, the topic is 'Pets'. The children are learning about the different ways you can take care of pets and what they need to keep them healthy. Mrs Moore, the classteacher, even brought in her dog Rex.

The Early Years curriculum puts a significant emphasis on communication and language as this underpins and supports all other areas of the curriculum. The children should be immersed in a language-rich environment so they can make the most of the opportunity to develop these key skills. One of the ways we approach this is by providing high quality texts so the children can develop their vocabulary. The children have been enjoying spending time outdoors sharing stories and have a dedicated wall space to share pictures of all the stories they have enjoyed over the term.

We have some exciting events coming up over the summer term. A whole school trip is planned to a place called 'Rural Life' in Farnham. This trip works beautifully with our topics and the children will take part in a variety of workshops including rural crafts and a wheelwright demonstration.

Later on in the summer, we have a Jubilee event. Parents will be invited to join us outdoors for a Jubilee tea party. The children will be dressing up in royal



**St Michael's
School**

stmichaels-dorking.surrey.sch.uk/

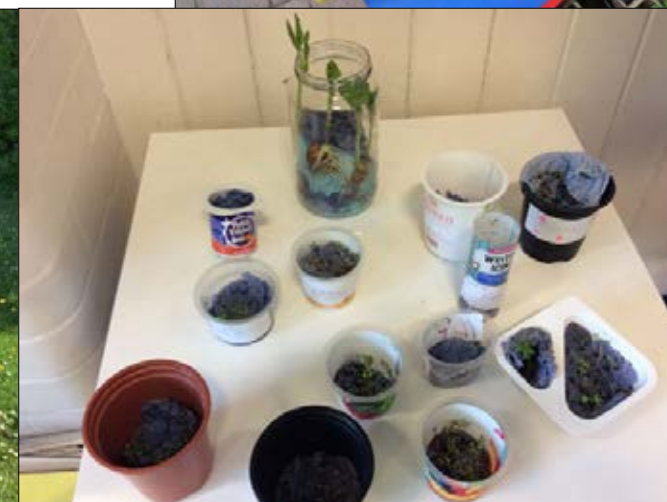
clothing and will make sandwiches and cheese straws to be enjoyed by all.

Transition is a key theme over the summer and we will be getting our Year 2s ready for the next phase in their learning journey as they move on to junior school. We always mark their departure with a Leavers' Service and party which is very symbolic and supports their transition to the next stage in their school lives. We work closely with the schools that the children are moving on to, to make the move as smooth as possible. Our younger children also have a transition to the next year group. The children will be given an opportunity to visit their new classroom and spend time with their teacher before the big move

Nicola Cleather



Right: Year 1 seeds germinating; Year 2 seeds germinating.
Left: Early Years story wall; Early Years sharing a story.



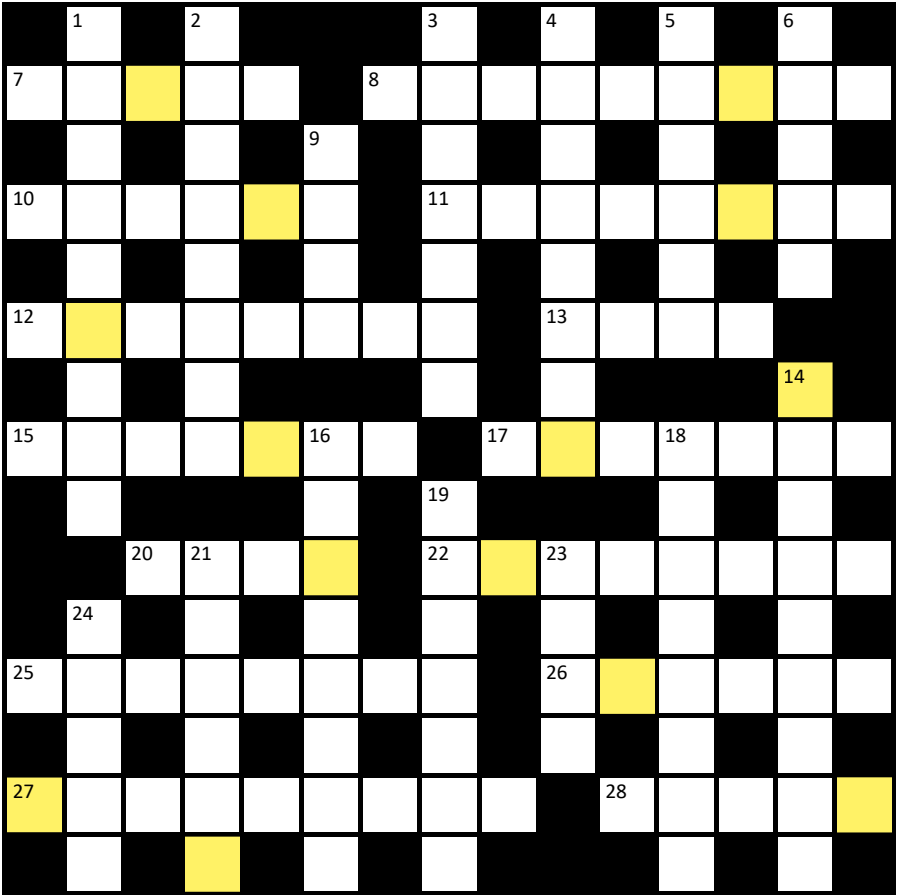
Cryptic Crossword



The golden squares can be made into a name associated with 23, 18, and 17 12 8 (and also amazingly 15 and 21 19) (7,7)

Across

- 7 Saint given source of oxygen to find a way towards heaven (5)
- 8 Conned Inuit out of neon bananas as a method of proving theory (9)
- 10 Childcare can be a matter of accident for the outspoken upper classes (6)
- 11 Ate al dente in a way that avoids the French having to set a date before the actual execution (8)
- 12 Half of mice mating frenetically - charming! (8)
- 13 Nothing personal smells - at last there is a means to turn wind into sweet melody (4)
- 15 Periodical about Scottish mountains might be made out to be the biggest cause of smell on forecourts (7)
- 17 Choose to iron without clothes in a form of exciting performance (7)
- 20 Characters in a font like Calibri might be printed on part of a hat (4)
- 22 Did exceptionally well to take in money when stressed (8)
- 25 Hearing when eating bread roll is alternative hearing (8)
- 26 It could be said that Partygate



- authorised angry constituents to deliver cake from the EU (6)
- 27 It need not be mixed into porridge (9)
- 28 Bother! The top has fallen off PA system (5)
- 6 Large vessel heading off from port in emergency service (5)
- 9 Burrow with odd intensity (4)
- 14 Member of association that is for enemas to be made free for seamen at sea (9)
- 16 Commission gives a mention to acrobatics (8)
- 18 Ceaseless snot can't be put right (8)
- 19 Return to research facility with madman and mushroom (7)
- 21 Prophylactic found in shrubbery (6)
- 23 Shut up! What on earth is the time spent so far by Charlie? (4)
- 24 Bent over backwards to give someone grief in the past (5)

Down

- 1 Big name drummer holds on to eyeball as a way to see someone like Galileo (9)
- 2 Bring back Buddhism after secret number found by church to appear in precarious spectacles (5-3)
- 3 Embellish hen with acne in a nightmarish fantasy (7)
- 4 Dry land is reached by black bird after swish with feathers (4,4)
- 5 I am indebted to broadcast boss

A dandelion seedhead

Photographer Ben Tatham

Andrew Tatham





**RESIDENTIAL • COMMERCIAL
AGRICULTURAL • SCHOOLS • ACOUSTIC
HOARDING • GATES • SECURITY**

RICHARDSON & BRADS FENCING LTD
T: 01306 640 143 - 01483 414 745
E: INFO@RBFENCINGLTD.CO.UK
W: WWW.RBFENCINGLTD.CO.UK
A: 168 SOUTH STREET, DORKING, SURREY, RH4 2ES
UNIT 45 MARTLANDS INDUSTRIAL ESTATE, SMARTS HEATH LANE, MAYFORD, GU22 0RQ

J S Wilson

Mickleham

Carpentry & Building Services



Extensions ~ Conversions
Refurbishments ~ Property Maintenance
Fully guaranteed ~ Fully insured
One call WILL solve it all

Contact Jason on: 07761 926684 or 01372 379359
info@jasonswilson.co.uk



MEABY & Co

solicitors

Strength & wisdom in law & business since 1848

Meaby & Co Solicitors sits proudly in the heart of Dorking High Street providing expert legal advice to individuals and businesses throughout the town and its surrounding area. With additional offices throughout London, our experienced team, our 5* Google reviews and award winning service will ensure that all of your legal needs are supported on your doorstep.

Specialising in:

Residential & Commercial Property	Fraud & Private Crime	Reputation Protection
Wills, Trusts & Probate	LGBT Experts	Commercial & Corporate Law
Litigation and Mediation	Employment Law	Media & Entertainment
Crisis Management	Family & Divorce Law	Lease Extensions

Drop by our offices at 159 High Street, Dorking RH4 1AD or contact our switchboard on 01306 884432. Need advice elsewhere? We can assist. We have branch offices in Camberwell, Soho & Chigwell.

Switchboard: 01306 884432 www.meaby.co.uk  @MeabyandCo  meaby-&co  MeabyandCo  meabyandco



Need help with your accounts?

Running a business needs time and energy – don't waste your time working on your accounts when you can work on your business instead!

At a4c we provide fixed fee accountancy solutions with friendly support throughout the year. Services include accounts, tax returns, VAT, payroll, book-keeping etc.

Friendly, approachable and local to Dorking – we enjoy getting to know our clients so call us today for a no obligation chat.

We LOVE numbers so YOU don't have to!

01737 652852

esther@a4cgroup.co.uk

www.a4cgroup.co.uk



01306 88 55 33

**For quotes or to make a booking
email us on: Enquiries@dorkingtaxis.co.uk**

www.dorkingtaxis.co.uk

- 4 / 6 / 8 Seaters
- Airport specialists
- Ferry ports & Eurostar
- Courier services available
- Home to School Transport service available
- Long distance journeys welcome
- All drivers & vehicles are fully vetted by MVDC & Surrey County Council
- Lady drivers available on request
- All major card payments accepted



**RANMORE
RENOVATIONS**

LOCAL BUILDER

New bathroom installation specialist,
plumbing/heating,
electrics, plastering & tiling,
decorating, Karndean flooring.
All building works and property maintenance undertaken.
All works guaranteed
36 years' experience

Please contact Damian
07940 599845 / 01306 880332
musgrovebuild@gmail.com



Home Instead®

A local, award-winning business supporting people living in Epsom and Mole Valley, enabling them to remain living independently AT HOME as well as providing companionship and colour to peoples lives.

RATED AS OUTSTANDING BY CARE QUALITY COMMISSION

Committed to providing a quality, trusted and consistent home care service, we only recruit local CareGivers and match every CareGiver to every client so the same person will call each time.

01372 741544

simon.burrowes@homeinstead-epsom.co.uk

www.homeinstead.co.uk/epsom

John Wadsworth



**CALL NOW FOR YOUR FREE VALUATION
01372 450500**

www.johnwadsworth.co.uk sales@johnwadsworth.co.uk
A professional efficient and friendly service