

# MICKLEHAM PARISH Magazine

A community magazine for Mickleham and Westhumble



A.N. Colwell 1984

October 2022



## PROFESSIONAL CARPET & UPHOLSTERY CLEANING

- Local family running company
- Over 100's 5-star Reviews
- Award-Winning Customer Service
- Safe for Kids, Pets, and the Environment
- Effective against dirt & stains from drinks, food, makeup, pets & more

**SURREY  
MAIDS**

- |  |                                      |
|--|--------------------------------------|
| <b>REGULAR CLEANING</b>                | <b>DEEP CLEANING</b>                 |
| • Professional Equipment •             | • Moving out/in services •           |
| • Trained Staff • Task List Provided • | • Seasonal Cleaning • Tenancy •      |
| • DBS Checked • Fully Insured •        | • Oven Cleaning • Windows Cleaning • |
| • Flexible Hours • Easy Payments •     | • Commercial Cleaning • Schools •    |

**PATTY PLUS** 01306 866288  
SERVICES LTD OFFICE@PATTY.PLUS  
WWW.PATTY.PLUS

## Bullimores



Accountants for Life  
Tax • Accounts • Probate  
Inheritance Tax &  
Executorship

T: 01306 880880

E: [partners@bullimores.co.uk](mailto:partners@bullimores.co.uk)

W: [www.bullimores.co.uk](http://www.bullimores.co.uk)

Bullimores LLP licensed to carry out the reserved legal activity of non-contentious probate in England & Wales by the ICAEW

# MICKLEHAM PARISH Magazine

Mickleham Rectory

October  
2022

## Mickleham Parish Magazine

A community magazine for Mickleham and Westhumble published under the auspices of Mickleham PCC with an independent editorial panel.

The magazine is published at the beginning of each month except January and August.

COPY DEADLINE  
NOVEMBER MAGAZINE  
Sunday  
9<sup>th</sup> October

send to:  
Sue Tatham

St Anthony Pilgrim's Way  
Westhumble  
Dorking RH5 6AW  
01306 882547

[editor@micklehammag.co.uk](mailto:editor@micklehammag.co.uk)

Contributions in any form are welcome as are good quality photographs. There is no charge for advertising local charity and community events. However the editors reserve the right to shorten omit or reformat articles submitted for publication depending on space.



Printed by Holbrooks Printers  
Portsmouth

Hello everyone

I have now lived in Mickleham for almost a year but every time I go out for a walk, usually at least twice a day with my dog, I am struck anew by the beauty around me and am filled with gratitude for it. The only exceptions being when Lexi decides to wrap me around a tree chasing squirrels or pulls me too hard and too fast chasing rabbits or pheasants. More seriously I hope I never take it for granted because that would mean I was not enjoying it and was valuing it less and so would be less inclined to take care of it. Gratitude in general is important for several reasons; it does help us appreciate the good even during life's struggles and it lifts our mood and reduces stress. Saying thank you is also an important way of recognising what someone has done for us and expressing our pleasure to them.

I always enjoy Harvest Festival services because there is a focus on saying thank you for all the good things we enjoy. It is easy to take for granted, not only the beauty and wildlife around us but our food. It is important to stop and think sometimes because it is easy to just buy what we need from shops or supermarkets and forget those who have provided it for us. We should pause to recognise the hard work of all involved including farmers, growers, harvesters, packers and sellers. I want to say 'Thank you' especially to all of our locals involved in getting the food and drink into my fridge, cupboards and freezer and onto my table. Thank you for all who make and serve such great meals in our various local eateries too! But let us not forget that God has made this world a productive one for he has provided the fertile soil, established weather patterns to give us sunshine and rain, cold and heat and such a great variety of plants and animals which make up food chains and enrich soil. God has blessed us with an abundance of good things so let us thank him too.

Our Harvest service is on October 2nd this year when we hope that crops will have been safely gathered. Saying thank you through singing hymns and saying prayers together is great and an important part of the service but equally important is sharing with those who have less than us. We encourage donations of non-perishable food at Harvest as an expression of our gratitude as well as showing compassion. It is not as decorative as fresh produce but is more useful.

I encourage you to join us at 11am for our service and if you cannot attend you could drop off some goods to the church beforehand to share with those who are struggling in the near locality. The church also collects food and essential items throughout the year, organised by our Church Community group with drop off points at St Anthony, Pilgrims Way, Westhumble or Garden Corner, Old London Road, Mickleham. Let gratitude prompt generosity.

Every blessing

*Sandra*

The Rev'd Dr Sandra Faccini Parish Priest

Sandra wrote her letter before going on holiday and before the death of Her Majesty Queen Elizabeth II was announced (see page 2).

**Harvest Supper and Festival occur on 1<sup>st</sup> and 2<sup>nd</sup> October**  
**Please note details in this issue**



## Stepping Stones

**MORE THAN JUST A PUB**

CAFÉ-BAR

Serving Morning Coffee and Afternoon Teas

RESTAURANT & ALFRESCO DINING

Serving fresh classic-style pub favourites

Live music events Take-aways available

Available for functions / private parties / celebrations / family gatherings

Dog friendly

Last Monday night of the  
month from 7.30 pm

01306 889932

[steppingstonespub@gmail.com](mailto:steppingstonespub@gmail.com)

[www.steppingstonesdorking.co.uk](http://www.steppingstonesdorking.co.uk)

**Please check website for up-to-date menus  
events and current opening times**

## Sherlock Funeral Service

*Sherlock Funeral Service is an  
Independent family owned business,  
established over 100 years*

- Private Service Chapel & Rest Rooms
- Home visits arranged if required
- Pre-Paid Funeral Plans available
- Free Parking

Telephone: 01306 882266

Trellis House, 190 South Street, Dorking RH4 2ES.

Email: [office@sherlockandsons.co.uk](mailto:office@sherlockandsons.co.uk)



**Funeral Directors & Monumental Masons**





## First Saturday of the month Coffee Morning at Westhumble Chapel

1<sup>st</sup> October

Come along between  
10 am and noon  
for coffee and cake £1.  
Free drinks for children  
Everyone welcome  
For further information call  
Jonathan Blake  
07787 126966

# Tea @3

Monday 17<sup>th</sup> October  
Host – Jennifer Louis

Westhumble Place,  
Westhumble Street  
Queries to 01306 883460  
ALL WELCOME  
TRANSPORT AVAILABLE



Future Hosts Needed  
Please get in touch with Julia if you  
are willing to help  
[siberrman@btinternet.com](mailto:siberrman@btinternet.com)

## The End of an Era

News that HM the Queen had passed away came as this magazine was in preparation. Television screens, radio and newspapers have been so full of information about her life that it is hard to find anything original to say. However, no-one can ever say enough about Her Majesty's complete and utter dedication to the life of service which she promised as a 21-year-old princess. While she was alive the country showed appreciation of her devotion most recently with the Platinum Jubilee celebrations, the like of which are unlikely to be seen again for a long time, if ever. As we prepare to go to press, crowds are showing a mix of sorrow and gratitude in queuing to pay their respects at the Lying in State in Westminster Hall. Others are doing the same quietly as they go about their daily business. Thank you, Your Majesty.

His Majesty King Charles III is her successor and we have seen him taking part in Accession ceremonies across the United Kingdom (which few among us are old enough to have witnessed, let alone understood, when Queen Elizabeth II acceded to the throne in 1952). It has been an unexpected demonstration of the seamless nature of the monarchy. We have seen him touring the realm with the Queen Consort meeting the crowds who have come to the streets to welcome him. He has pledged to follow his mother's example of service. God save His Majesty the King.

## Licensing of the New Rector

Congratulations to the new Rector of the Benefice, the Rev'd Will Perry, and the new Associate Minister, Revd Tom Hill who were licensed on 31st August.



**Harvest Supper**  
**Saturday 1<sup>st</sup> October**  
**Village Hall 7.30 pm**  
**ALL WELCOME**  
**Tickets £10 adults and £5 for under 12s**  
**include a delicious meal, scrumptious puds and soft drinks. Pay bar.**  
**Available from: [churchwardens@micklehamchurch.org.uk](mailto:churchwardens@micklehamchurch.org.uk)**

**Harvest Festival**  
**11 am Sunday 2<sup>nd</sup> October in church**  
**Harvest gifts of non-perishable food welcome**



**Men's and Women's Saturday Breakfasts**  
**at the Stepping Stones**  
**9 – 10 AM**  
*A social gathering open to everyone*

<b>WOMEN'S BREAKFAST</b>	<b>MEN'S BREAKFAST</b>
3 <sup>RD</sup> SATURDAYS	4 <sup>TH</sup> SATURDAYS
NO BREAKFAST IN OCTOBER	22 <sup>TH</sup> OCTOBER
	Book with: Andy Diamond <a href="mailto:diamo1@hotmail.co.uk">diamo1@hotmail.co.uk</a>

## Eco Church, St Michael and All Angels

Eco Church is an award scheme for churches in England and Wales who want to demonstrate their concern for the environment and by their actions work for the protection and restoration of the natural world. Our parish church has now registered for the Eco Church scheme and will work towards the first stage which is the Bronze Award. The scheme operates by means of answering a questionnaire covering four main areas: Worship and Teaching; Management of Church Buildings and Land; Community and Global Engagement; and Lifestyle. Points are gained for each area that can show measurable efforts to 'embed more deeply environmental concerns in the culture of the church' (Dr Rowan Williams, former Archbishop of Canterbury 2016).

As someone who has cared for the

environment all my life, I was very pleased to be asked by the Rev'd Sandra Faccini to be the first chair of the group that will look at Eco Church in our community. In Sandra's message to the community in the last Parish Magazine she mentioned the long, hot summer of 1976 in a thoughtful piece about personal lifestyle choices to 'tread lightly' on the earth, a message that resonated with me as in that same year I was attempting to live a life of 'self sufficiency' in southern Ireland. As I discovered, it required a great deal more self discipline than I had at the time, but it did ignite a spark that has not dimmed much over the years. I hope that our group, made up of people in the community, will be able to present ideas to the Parochial Church Council (who make the decisions) that will make a difference, however small.

Dates for the diary: Saturday 22nd and Sunday 23rd October

As a start we are going to use the accumulated compost of many years to enrich the soil where a new hedge will be planted this winter, using everything on site with no external removal.

We will be looking for up to eight volunteers each day to help the removal using two powered wheelbarrows and plenty of community muscle. Bring your own spades, forks and protective clothing.

There will be a free BBQ with tea and cake for all volunteers. The Vestry toilet will be available.

If this appeals to you please contact Eric Flint on [ericflint8@gmail.com](mailto:ericflint8@gmail.com) or via mobile 07946 631161. Alternatively to [davidkennington144@gmail.com](mailto:davidkennington144@gmail.com)

David Kennington

## The Chapel of Ease Garden



As many of you will know the small garden at the Chapel of Ease has been in rather a sorry state for some time. We are very grateful to the residents who keep an eye on it and have, over the years, helped with maintaining it, but with tree roots breaking through the paving and crumbling steps it was felt that something needed to be done to make this wonderful space usable once

more. With a very kind donation from Westhumble Residents Association towards the cost of the hard landscaping we were able to go ahead with the work and the PCC Eco group will review the soft landscaping in the near future to reflect the simple charm of the chapel and provide support for local wildlife.

Catherine Diffey



**Thursday 20<sup>th</sup> October**

**Mickleham Village Hall**  
**3.30 to 5 pm**

**Come along and join us for family fun, games, songs, food and crafts. For children aged 3 – 10**

**ALL ARE WELCOME**  
**To reserve your place or find out more details, email Sarah Blake by Monday 17<sup>th</sup> October [SarahJbl@outlook.com](mailto:SarahJbl@outlook.com)**

**ST MICHAEL AND ALL ANGELS CHURCH**

*All children must be accompanied by an adult*



On 8th September the Thursday morning Bible Study Group celebrated the recent 90th birthdays of Anne Mathieson (standing) and Jennifer Louis.



Superb professional  
cleaning of carpets  
oriental rugs  
upholstery curtains  
and leather  
Guardsman  
anti-stain protection

- spot stain and odour removal
- leather cleaning specialists
- flame retarding
- dust mite reduction service
- all work fully insured & guaranteed

For a free no obligation quotation call today  
Freephone 0808 144 9071  
John Joannides 28 Bracken Close Bookham

**Safeclean**  
*The furnishing care specialists from GUARDSMAN*



**Pinehurst  
Rest Home**

*We aim to provide an excellent service at competitive rates supporting emotional physical and social needs of our clients always respecting and protecting their status as adults.*

- Residential and 24-hour daycare
- Excellent *cuisine*
- Facilities for disabled: medic bath / lift
- Home doctor in attendance
- Single & sharing rooms
- Convalescent & short stays
- Lounge with TV & piano
- Separate dining room
- Physiotherapist chiropodist & hairdresser
- Entertainment: theatre visits / parties & cabarets held on premises

**National Trust Road Box Hill  
Mickleham Dorking Surrey RH5 6BY**  
Telephone: 01306 889942 / 888253

*Dorking  
Decorators*  
PROFESSIONAL  
PAINTERS & DECORATORS

**Established Local Family Business**

- Over 20 years' experience
- Internal & External
- Commercial & Domestic
- Friendly First Class Service
- Surrey / Sussex / Greater London

**FREE ESTIMATES  
01306 640418**  
**www.dorkingdecorators.co.uk**  
As approved by Checkatrade

**51° NORTH**  
EAT • DRINK • SHOP

**An exciting new place  
to eat, drink, shop**

- Morning Coffee and pastries
- Breakfast choices
- Selection of lunch dishes
- Afternoon teas & cakes
- Selection of savouries
- Wander around our food store selection

fiftyone.degreesnorth@yahoo.com

01306 320455

@51.Degrees.North.Mickleham @51.degreesnorth

London Road  
(Bottom of Byttom Hill)  
Mickleham  
Surrey. RH5 6EH

**PRIVE**

LUXURY HAIR SALON

8 High Street Leatherhead  
01372 360302

www.privelondon.co.uk i prive\_leatherhead



**SIMON HOOPER**  
**For all your decorating needs...**

Professional friendly and speedy service at all times

Fully insured	Insurance work
Exterior painting	Interior decorating
Free quotes & advice	Oil & Water-based products
Commercial/Domestic work	Wallpaper hanging & removal
07947 135 376	0208 3978 962
www.slhdecoratingservices.com	



## St Michael's Church Community Group

**SCALEXTRIC  
EVENING  
URGENT: SIGN  
UPS NEEDED BY  
15TH OCTOBER**

Following the great fun and general success of the Skittles evening, we are planning a magnificent Scalextric evening on Saturday November 19th in the Village Hall.

BUT WE REALLY NEED TO HAVE AN EARLY IDEA OF NUMBERS! We have put down our deposit, but this is only refundable if we do not have sufficient numbers signed up by OCTOBER 15th. So please email or otherwise communicate ASAP, and please pay for your ticket up front. Bank details are: Sort Code 04-00-04; Account Number 93513746, in name of Will Dennis; please use reference 'Scalextric' to assist. Contact for more details or a different method of payment: Will/Annie Dennis: **annie@micklehamhallfarm.co.uk**

Moneys will, of course be refunded in full if we find that WE CANNOT BE SURE OF ATTENDANCES BY 15TH OCTOBER. BUT IT SHOULD BE A FUN EVENT! PLEASE DO JOIN IN.

The event will involve a large (4.5 x 2.1m) track, together with electronic lap timing and managed by a Professional

Race Director. You are not limited, except by common sense and fairness, to any number of timed laps, a bit like the practice events for Formula 1, and your 'personal best' will be recorded and displayed electronically. Finals sessions will follow. There will be prizes! (NB Scalextric has advanced considerably since the big transformer and cars that always lost it at Bend 1).

We intend to run the event from 5.30 pm until 9.30 pm, with the first part to be concentrated on kids and families and the second on the 'Adult Children' whose nostalgia for their childhood Scalextric experience is high, though kids and families can carry on. There will be a bar.

The entry charges may be of the order of: Adults £12, under 18s, students and those on benefits £6, and a family rate (4 People) £25.

### Autumn Lunches

Following the well-attended Lent Lunches, the Community Group will be hosting autumn soup and cheese lunches in the village hall on the first Thursday of each month, starting on Thursday 6th October, then 3rd November and 1st December, dates for your diaries. We will need volunteers to set up, clear away, make soup and help in the kitchen. If you would like to be part of this community effort please sign up in the church or phone or DM Mary Banfield (07733 322477).

No charge will be made, but donations to cover the cost of the food will be welcome, with any profits going to charity. Please sign up, if possible, five days before each event, so we know how many to cater for.

### FoodBank

The need for increased effort to supply our FoodBank has never been more clear, and this winter is likely to be a difficult one for many families. The weekly donations to each of our two collection points have been consistent and much appreciated by our local charities. At the moment, we supply both Leatherhead Start and The Meeting Room, both in Leatherhead. Do go on line to see what they do. We also give to the Dorking and Epsom Foodbanks when required.

Help us make a greater WINTER EFFORT for this essential service, just tell Alexa to remind you or write it at the top of the Shopping List. Lists of generally needed items are listed elsewhere in this magazine, and particular shortages are given in Pews News every week.

### Jubilee Tree

Just to report that, after a very difficult beginning through the drought, and the regular use of Sarah Penry's hose and the combined watering efforts of a few people, the tree is doing well. It has sprouted new leaves and is starting to look in place in the Memorial part of the Churchyard.

Mark Day

## The Mickleham Playground Needs Your Help

On 23rd June we held a hugely successful pub quiz at the King William IV to raise funds jointly for the Mickleham Village Playground and St Michael's Infant School. We had a fantastic turnout of 77 people and raised some much-needed funds for these important village assets. Huge thanks to Eamonn and Anne for hosting the evening and to everyone involved in its preparation.

Mickleham Village Playground receives no funding and is run by a small group

of volunteers. Since its inception, Heather Bourne has served as trustee and secretary. She has now decided the time has come to step back and I would like to take this opportunity to thank her and Kent for their amazing work in helping install our new playground and keeping it running over the years.

Heather's retirement means we are now looking for a new secretary and trustee (these need not be the same person). Volunteering for these roles requires only a small investment of time



but is a great way of contributing to the ongoing survival of the playground, which is so important for the children of our village and beyond.

If you are interested in becoming part of our team that lies at the very heart of this community, please do get in touch with me on **sarah@sarahparfitt.com**

Sarah Parfitt



# MPM starts its 39<sup>th</sup> year as a community magazine

On a late September evening in 1984 a group of about 20 gathered at the Westhumble Chapel to assemble 450 copies of the October Mickleham Parish Magazine. The 16 pages had been printed earlier that day by Anne Bebbington on an ancient Gestetner duplicator at Juniper Hall. The covers, designed by Colly Collwell (see Stephanie's article) had been professionally printed. It was a very jolly evening and when the work finished, we drank a toast to the future of the new MPM. (In her own inimitable way Rose Wilkinson – as she was then – had procured several bottles of champagne for the purpose.)

**How it all began ...** In 1984 my husband Ben was a Mole Valley District Councillor serving the Mickleham, Westhumble, Box Hill and Headley Ward. In his post each month was a copy of the Headley Parish Magazine which included many items of community news and information about coming events. At that time our parish magazine was just one folded sheet of paper containing the rector's letter, a list of church personnel, times of services, a few snippets of news and reports of WI meetings. It was published according to the church calendar: Advent, Epiphany, Lent etc. We lived in Westhumble, and Ben's mother had lived in Mickleham, so we were well placed to know what was going on in both communities which were far more socially remote from each other than they are today. As the ecclesiastical Parish of Mickleham includes Westhumble, it appeared to me that the church was missing a big opportunity to bring people together.

I had raised this point at the annual church meeting earlier that year, and discussions about how it might work began. The churchwardens agreed to underwrite the project initially, but it was intended that the magazine would be self-financing through donations and advertising. As this was to be a community magazine, I wanted everyone in the parish to receive a copy. I felt very strongly that we should not charge a subscription. The following February after letting the public see

three issues of the new magazine, we launched an appeal for donations, suggesting £2 to £2.50 as a reasonable sum. In the May 1985 issue, we reported that the appeal had raised more than £700 (£1,841 today). Over the ensuing years I think we had two or three more appeals for funds, but as the magazine became more well-known, we began receiving requests from local businesses to include their advertisements. For many years now the magazine has been totally financed by advertising.

During the months when I was assembling the teams to produce and distribute the new magazine it was very pleasing to find that so many people were willing to help. The editorial panel included Su Clark, Deputy Editor with Rose Wilkinson, Vi Gordon and Beryl Icke providing the news. Harry Sowden was features editor. I remember very clearly that Harry was sitting next to me at the annual church meeting, and after I had made my suggestion for a new focus for the magazine he lent over and said "I'll do your crossword." He was as good as his word and continued for many years. In fact over the 38 years, we have had only three crossword compliers; Richard Roberts-Miller succeeded Harry, and following his sudden death in 2017 my son Andrew stepped into the breach.

Sayda Cole was our very competent typist, and we were extremely lucky that John and Anne Bebbington offered us the use of Juniper Hall's reprographic room. There were four teams which took it in turn to collate and staple the copies. These were headed by Jane Palmer, Jaki Piper, Jill Munn and Kate Warren. Even today members of these teams recall happy memories of walking around the table picking up pages. Finished copies were then put into labelled bags and taken to the 27 deliverers. Linda Boyle distributed the bags in Mickleham and Lyn Montague in Westhumble.

It was not long after we started production that we went digital. I bought a Sinclair QL computer and taught myself how to use it. It had a proper keyboard (earlier models had

touchpads) and two ports for tiny tape cassettes – one contained the apps: word processor, spreadsheet and database, the other stored the data. Luckily, this word processing program was the forerunner of today's Word – WISIWIG in IT parlance. This enabled us to leave spaces for illustrations which were pasted in. Our daisy-wheel printer did not accommodate changes in font size, so we resorted to using Letraset for headings.

With minor adjustments to numbers of copies, the occasional change of personnel and advances in computer technology, production of the magazine continued much the same until 2004 when the Bebbingtons retired, and we could no longer use Juniper Hall's facilities. By that time our finances were such that we could afford to have the magazine printed professionally. Although the printers' longer turnaround time meant less immediacy, this was a welcome change. Gone were the hassles about paper supplies, dealing with paper jams, running out of ink, wrestling with staplers and the transport of crates of pages between sites. Everyone agreed that the magazine was enhanced by having it professionally printed throughout. In February 2017 our first full-colour issue was published to much acclaim. This has enabled us to include stunning photographs of our glorious countryside.

Early magazines featured occasional articles about old Mickleham by Mo Chisman who had a collection of bound copies of old parish magazines – some dating from the late 1800s. These proved most interesting and helped us to appreciate the important role parish magazines play in recording social history. This realisation became a factor when it came to choosing content for our monthly issues. It also spurred us on during low points when we wondered if it was worth all the time it consumed. Today when local papers are in decline and most communication is digital and transient, much of today's social history will be lost unless publications such as ours continue. It is gratifying to find that people have come forward to ensure its future.

Sue Tatham

# About the parish magazine cover

New residents may not appreciate the significance of our cover, so read on.

Our unique cover was designed in 1984 by local artist F N Colwell, known locally as Colly, who lived in Byttom Stables. This is when the format of the Mickleham Parish Magazine changed from one folded sheet of church information to a community magazine for Mickleham and Westhumble. Colly's brief was to show the two communities divided by a railway, river and a dual carriageway, but with the church as a link between the two.

Clockwise from top right: The present **Mickleham Church** building is Norman dating from the 12<sup>th</sup> century, which replaced the much earlier Saxon church mentioned in the Domesday Book; the 18<sup>th</sup> century country house **Juniper Hall** which became a refuge for émigrés from the French Revolution, most famously General D'Arblay, who married novelist, Fanny Burney, former wardrobe mistress to Queen Charlotte. The hall, now owned by the National Trust became a **Field Studies Centre** in 1947 - one of the original four in Great Britain. **Burford Bridge Hotel** was originally an inn called the Fox and Hounds and, allegedly, a location of dalliance for Lord Nelson and Lady Hamilton; **Kingfisher** (*Alcedo atthis*) can still be seen along the river Mole in Burford Meadow (if you are patient); **Box Hill and Westhumble Railway station** listed by Pevsner as one of the most picturesque in the country was built in the French château style at the behest of Thomas Grissell owner of Norbury Park through whose land the proposed railway line from Leatherhead would be built in the 1860s. **Westhumble Chapel** a converted 17<sup>th</sup> century barn used as a reading room by navvies building the railway; **the river Mole** in Norbury Park; **Druids Grove** in Norbury Park which is still visible if you know where to look.



These sprawling yew trees are hundreds of years old; deer in **Norbury Park**; **Norbury Park House** home, among others, to Marie Stopes early pioneer of birth control for women.

Through the centre the river Mole flows north through the Mole Gap

to join the Thames at Molesey, the railway and the A24 dual carriageway built in 1938 was famously used as an 'equipment park' by Canadian and British Forces prior to the D-Day invasion in 1944.

Stephanie Randall



A date for your diary  
Christmas Café at The Chapel  
Saturday December 10th, 2 to 4 pm  
Crafts/Cakes and Chat.





## Fully Experienced Carer/Companion

- PART-TIME LIVE-IN • DRIVING LICENCE HOLDER •
- HOURS to SUIT • BABY/CHILD SITTING •
- EXCELLENT REFERENCES • FULLY INSURED •

Reliable, Kind and Caring  
**07748 743 732**


High Quality, Professional Home Care and Companionship Enabling People in Mole Valley & Surrey to Remain Living Independently at Home



**Treeline** Services Ltd.  
**YOUR LOCAL PROFESSIONAL  
TREE HEALTH CARE SPECIALISTS**

Felling, Pruning, Stump Removal, Planting, Logs,  
Woodchip, Air Spade Services, Consultancy

Call us on **01306 741800**  
**office@treeline.co.uk • www.treeline.co.uk**



Your visiting  
**PHYSIOTHERAPIST**  
**SUE JUDD** MCSP HCPC

40 years of experience.  
All your requirements for elderly  
mobilisation & post-operative  
rehabilitation.


07834 227999 sue-judd@sky.com



**REMOVALS • STORAGE • SHIPPING •**

- Since 1926, Capel-based and family owned
- STRESS-FREE, local, national & worldwide
- Contact us for your **FREE** estimate...

**01306 711293**  
**edebros.co.uk**



Gill and Paula would like to warmly welcome you to Aspen Care offering assistance to enable you to live in the comfort of your own home with care and companionship.

- A happy alternative to a care home
- Cover while your family or carer takes a holiday
- Recuperation and rehabilitation following a hospital stay
- All aspects of personal care medication and meal prep
- Dementia care disability chronic & critical conditions end of life care
- Accompaniment to appointments

Call for a chat to discuss your requirements.  
We look forward to hearing from you.

01737 354821 info@aspensliveincare.co.uk www.aspensliveincare.co.uk

**P J Oliver & Son**

Window cleaning  
House & Garden Maintenance  
Roof Repairs Guttering  
Painting & Decorating  
Ground works fencing hedge cutting  
and tree work  
Also Pest control

Call Phil on 07722 158111  
Email Oliviagarrett79@gmail.com



**YOUR LOCAL FARM SHOP  
ON DENBIES WINE ESTATE**  
farm shop deli plant centre

Open daily 9.30 to 5.30 and Sundays 10 to 5 Free parking

**English apples now in! Come to our Apple Day : 15th October**

We deliver veg bags and more to the local area on Tuesdays and Fridays  
see [www.vgfarmshop.com](http://www.vgfarmshop.com) or email [vegbag@vgfarmshop.com](mailto:vegbag@vgfarmshop.com) for details

**LOCAL • NATURAL • ETHICAL** 01306 880720 [www.vgfarmshop.com](http://www.vgfarmshop.com)

## Mickleham Choral Society is off to Italy!

I suspect most of you do not know that Dorking is twinned with a small town in Tuscany called Sinalunga. Sinalunga is a charming old town situated about 30 minutes from Siena on top of a hill overlooking the Tuscan countryside. It has a perfect 18<sup>th</sup> century theatre perched at the very top of the town and MCS has been invited to give two concerts there at the end of October (see picture). I can still hardly believe our luck. Sinalunga has a vibrant musical community and we will have four days of rehearsing, singing together with their choir, giving concerts and, of course, eating and drinking: this seems to be a critical part of the programme for our Italian hosts! Our final concert will be in the beautiful theatre, given jointly with the choir of Sinalunga. We will raise the roof.

It is going to be a very busy term for MCS. Not content with a trip to Tuscany, less than two weeks after our return from Italy we will be giving our traditional concert for Remembrance Sunday on 13<sup>th</sup> November in St Michael's Church. Then to round off the year we have our fun-filled Carol Party on Friday 16<sup>th</sup> December in Mickleham Village Hall.

The last two years have been very difficult not just for MCS but for choirs everywhere. The joy of singing and the wonderful friendship that comes with



Ciro Pinsuti Theatre

being a member of a choir has been sorely missed. We are back and the next few months are going to be the best we have ever had. I cannot wait.  
Juliet Hornby

## More about Sinalunga and their singers

While more than 50 people, members and friends from the Mickleham & Westhumble Choral Society are getting ready to jet off to Tuscany on October 24th to sing and be welcomed with open arms into the community of the hilltop town of Sinalunga, in the province of Siena the smaller choir *Silence Please*, a young female ensemble, are preparing to take part in person in the Arts Alive Festival in October by performing in the inspiring St. Michael's Church in Mickleham on Saturday 15th October at 7 pm.

The extremely enthusiastic young ladies called *Silence Please* is one of the various, very talented and diverse choirs and local bands who perform regularly around Sinalunga and district areas and now, finally, further afield.

They are part of the very same people, who during the summer of 2020, (challenged by the closure of their enchanting *Ciro Pinsuti Theatre*), rolled

up their sleeves and set out to perform outdoors, up and down the streets, in all the different local ancient piazzas around these remarkable places!

Throughout the long months after Easter 2020, after vowing NOT to be silenced or divided by the pandemic, the group kept the Sinalunghese people entertained online, using technology to bring them together, albeit shut away each in their own house.

Later, in summer 2020 (from musical and theatrical presentations to tiny tot dancers and majorettes from the schools), the voices of the Sinalunghesi echoed through Sinalunga and surrounding villages for many evenings as night time fell and nobody wanted to go inside and ponder.

During Christmas 2020, they were back to online only singing and decorating a christmas tree separately, but united again in song.

The members of *Silence Please* will be led by their teacher Vanessa, and

accompanied on the pianoforte by Gianni Bagnoli (both Professore and the Sinalunga Councillor for Culture, Heritage & Education.) Gianni is also the person who will be looking after the Mickleham & Westhumble choir during their visit to Sinalunga just a few days after they perform here in Mickleham, **so please do come and support them on October 15th 2022 at St. Michael's Church Mickleham**

Both the English and Italian events were born and nurtured by Dorking & District Twinning Association which is very proud of their very recent addition of the Slow Tourism Tuscan town of Sinalunga. The Italian twinning was only set up in 2019, just a few months before the virus halted all possible in-person exchanges.

We now all look forward to many other visits to all the twinning countries and to the rekindling of these amazing new friendships for all our members.

Pauline Greenwood

If you have come to live in Westhumble or Mickleham since 2019 please read about the Bonfire and Fireworks on page 18. Helpers are needed for bonfire building. Even if you can only spare a short time, every little helps. Please do not leave it to the same people who have been doing it for years.



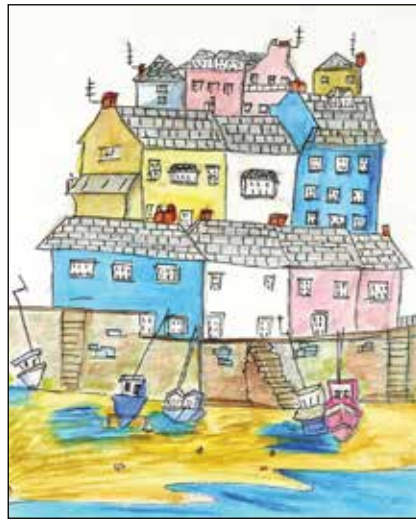
# 'Our Time' Artists in Residence - 2022 HM Prison Send

Last autumn I read an article in the Surrey WI News about artwork produced by women artists at HM Prison Send, near Ripley. A charity calendar featuring their paintings is produced each year and I ordered one for 2022. Now the 2023 calendar is available to buy (picture top right), full of the original artworks that were created for the fifth 'Our Time' exhibition held this summer.

These artists attend weekly art workshops delivered (since 2009) by a tutor from the Watts Gallery Trust as part of its 'Art for All by All' programme, funded by the Michael Varah Memorial Fund (MVMF). The profit from any sales goes back into the social enterprise model that encourages the artists to develop skills that may lead them into training or work on release. The therapeutic power of art also gives them hope. One or two of the original artists are now in the community or abroad, supporting their resettlement through art.

Earlier this year I heard Sally Varah of the MVMF speak at the Surrey Women's Institute meeting in the Dorking Halls. She was inspirational and as a result I left my email address for further contact. I was delighted when in April I received an invitation to attend the 'Our Time' exhibition in June. I was able to take along named guests and so on 29th June, Frances Presley and Jennifer Louis and I visited the fifth 'Our Time' exhibition at Send. Sadly there was no exhibition in 2020 due to Covid. Back in 2017 two of the original artists had the idea for what they called 'Our Time' – the first in-prison exhibition of its kind in the UK. They wanted to showcase their artwork personally and to be judged as artists by invited guests. They learned to plan, organise and curate the event themselves, acquiring new skills, achieving personal goals, building their self-belief and developing pathways that could potentially reduce their risk of re-offending.

On a lovely summer's afternoon back in late June, after various security checks



and escorted by officers, we entered the Visits Hall where the exhibition was held. We did not know quite what to expect. However, it was just the same as any other art exhibition and very well organised. After a talk by the female deputy governor of the prison, the artists introduced themselves by their first names and each spoke a little about their art. Quite a brave thing to do in front of an audience. I personally found the women's testimonies both moving and humbling. One of the artists who had recently been released was back to help curate the exhibition and hopefully is now on her way to earn her living from art.

There was a merchandise table manned by volunteers full of beautiful postcards, notecards and four festive Christmas card designs, printed from the artwork on display and we could not wait to see the originals. After the introductions, the artists moved to the pods displaying their own particular exhibits and were available to answer any questions we had about their work. I have been going to art classes for six years and only wish I had as much talent as they have. There was so much to see, drawings, paintings, collages, ceramics and more. I do not think words are enough to explain this exhibition. I would just say if you would like the chance to view the work of the 'Our Time' artists at Send Prison, then apply for an invitation to their next exhibition. You will not be



Some pictures from the exhibition

disappointed. And if you want to buy any Christmas cards, other cards or the 2023 calendar they are available from [info@michaelvarahfund.org](mailto:info@michaelvarahfund.org) or [www.michaelvarahfund.org](http://www.michaelvarahfund.org) or call 01483 567688.

Michael Varah was Chief Probation Officer of Surrey for 16 years and the eldest son of the Rev'd Dr Chad Varah, who founded the Samaritans. MVMF is a registered charity and is chaired by Sally Varah, Michael's widow.

I would like to finish with some words from Bishop Jo Bailey Wells, Bishop of Dorking. 'For myself, I've learnt how significant are the gifts of beauty and colour and creativity for a true appreciation of life and the sustenance of its joys. It's clear that the 'Our Time' artists already know this. I marvel to see them nurturing these gifts, and not only for their own benefit but to share with others. Thank you to all involved for the beauty that is shared at this exhibition.'

Carole Brough Fuller

## Promenade concert in aid of Ukraine

When looking through the 'Prom' programme this year I saw that an extra concert had been included, most unusually on a Sunday morning. This turned out to be in aid of Ukraine, the conductor, soloists and the orchestra all had ties with Ukraine in one way or another. Apart from the fact that this was in aid of Ukraine, it also happened to include one of my most favourite symphonies - Brahms No. 4.

The concert was the brain-child of Keri-Lynn Wilson, the Canadian-Ukrainian conductor who has a very impressive international career. She brought together musicians from all over Ukraine and Europe to form the Ukrainian Freedom Orchestra which was born out of a crisis, namely the invasion of that country by Russia. They assembled in Warsaw from all over Europe only three weeks before the date of the Prom, and the Polish National Opera offered two weeks' rehearsal time with sponsors covering the costs.

The three soloists were all Ukrainian and so was the composer of the first piece to be played. This was Symphony No. 7 by Valentin Silvestrov which he wrote in 2002-03 after the death of his wife and which he intended to be

his last work. However he did go on to compose further works.

The soloist in Chopin's Piano Concerto was Anna Fedorova who grew up in Kyiv, studied at the Royal College of Music and now lives in Amsterdam where her husband plays with the Royal Concertgebouw Orchestra. Her parents managed to get out of Kyiv just before the start of the invasion.

Next came the recitative and aria from the first act of Beethoven's only opera *Fidelio*. This was sung by Liudmyla Monastyrskaya who had been a principal soloist with the National Opera of Ukraine. She sang with passion about the possibility that a prisoner, who might be her husband, was going to be murdered in prison. You had the impression that she was singing for all her country people who had already lost their lives.

Finally Brahms 4th Symphony was played by the Ukrainian Freedom Orchestra. Its members included musicians who were still in Ukraine, Ukrainian members of European orchestras, players from Kyiv, Lviv, Kharkiv and Odesa and refugees.

I think that I have attended a Prom concert for the last 60 years and was once even lucky enough to go to a 'last



night'. But this was one of the most moving and meaningful that I have ever attended. The encore was a new arrangement of the Ukraine National Anthem which was almost ethereal and haunting in its performance. It is not too often that the Albert Hall is completely sold out but it was that Sunday morning, and at the end the audience rose as one person to applaud and cheer for at least ten minutes.

After their appearance in London the Orchestra was due to go on tour to many cities in Europe and then to New York and Washington DC. It was an experience I shall never forget.

Frances Presley



The Mickleham Parish Council welcomed John Lowes, its newly appointed councillor to his first official meeting on Wednesday 14th September 2022.

Following the departure of Councillor Jane Brown, who moved out of the area back in June 2022. Mickleham Parish Council considered applications from two strong candidates to the councillor vacancy and voted to appoint John Lowes, a resident in the village for the last 30 years.

John, who is now retired, worked for the NHS for 35 years, the last 25 years of which as a GP in the local area. He is keen to take on the role and continue his hard work supporting the Parish Council. He has worked with the existing councillors since October

## Mickleham Parish Council

2020 on a Working Group liaising on council matters pertaining to Norbury Park. He brings a unique perspective of the needs of residents in a local community and experience in dealing with government bureaucracy.

Gill Wilson a resident of Mickleham for 17 years and regular volunteer in the community, missed out on this occasion. Unlike other parish councils, Mickleham has been lucky to have more than one candidate apply for a vacancy and once again Councillors regret that they were not able to appoint both candidates. However, Gill's experience and knowledge should not go unused, and it is hoped that she can make a significant contribution to the Parish Council with the many issues it faces, not least the challenge presented by the plans to further develop Norbury Park.



Chair David Ireland thanked both candidates for their interest and concern and is looking forward to working with them for the benefit of the community, especially in these very challenging times.

Mickleham Parish Council



## A Confidential & Safe Space to Talk

Counselling • Mind & Body Healing  
Reiki • Relax into Nature Sessions  
Face to face/Online/Outdoors/Distance  
Supporting you with compassion and  
understanding through challenging times



Call Judith Cobby  
on 01306 882229  
or 07790 614448

[www.healing-inspiration.co.uk](http://www.healing-inspiration.co.uk)

## TIM LANGLEY

*Experienced craftsman*

ANTIQUE RESTORATION  
CABINET MAKING  
FRENCH POLISHING

Free estimates collection & delivery  
01372 457700 07960 486455

## Ballroom Dancing Latin American Dancing Professional Training [IDTA]

Private lessons on  
Tuesday afternoons and  
Sunday evenings

At Mickleham Village Hall  
Dell Close Mickleham Surrey RH5 6EE  
07748 867 732  
[vmvdancing@gmail.com](mailto:vmvdancing@gmail.com)



IDTA Qualified Teacher

## Julie Watts Family Law

AN AFFORDABLE AND EXPERIENCED PROFESSIONAL  
ALTERNATIVE TO TRADITIONAL SOLICITORS

- Divorce • Arrangements for children • Finances
- Court Proceedings

PROUD TO PROVIDE A DIFFERENT KIND OF SERVICE

- Affordable fees • Straight-talking advice
- Practical real support

Contact me for a consultation  
07808 572157 [juliewattsfamilylaw.co.uk](http://juliewattsfamilylaw.co.uk)



## Mike Palmer

Electrical Services

Part P registered electrician

From additional lighting and  
sockets to complete rewires  
Fully insured Registered with the NICEIC

07866 930483 [mike@mikepalmer.biz](mailto:mike@mikepalmer.biz)  
Boxhill Way Strood Green Betchworth RH3 7HY



Regular Lawn Mowing  
Lawn Care & turfing  
Pressure Washing  
Hedge Trimming  
General Garden Maintenance

[phil@philsmowingdorking.co.uk](mailto:phil@philsmowingdorking.co.uk)  
07905 160765



## KING WILLIAM IV

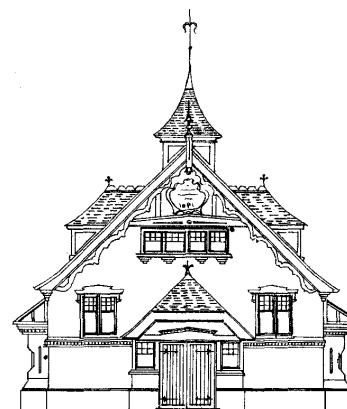
Dear Neighbours and Friends,

Wow, as I write, Byttom Hill resembles a river not a road due to the thunderstorms, so everything crossed for some sunny autumnal days. I have been given the unusual honour of writing this, as Eamonn is busy being trained on Instagram (or Insta apparently) by his daughter's friend. I can see him trying to get to grips with hashtags, handles and no full-stops. It is amusing to watch but I think he is quite enjoying it, and anyone less of a Luddite than me can follow him at [kingwilliamiv\\_mickleham](https://www.instagram.com/kingwilliamiv_mickleham)

We are very sad about the passing of our beloved Queen and wish King Charles III a great reign; odd to think it probably will not be too many decades before our King William IV is eclipsed by a King William V. We were packed for our first Friday music event, so a huge thanks for your support, and we hope to host a couple more next summer. In the meantime, we have transitioned to our autumn menu with some good value winter-warmer dishes to keep our spirits up and waved adios to our brilliant uni students so look forward to their return in December. Finally, our Christmas Festive Menu is live on our website, and we'll be delighted to host your big or small Christmas events for colleagues, family or friends.

Happy autumn, Anne

Byttom Hill Mickleham 01372 372590 [www.thekingwilliamiv.com](http://www.thekingwilliamiv.com)



## Mickleham Village Hall available for hire

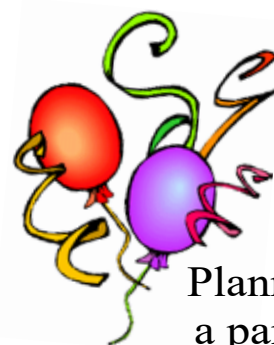
Hall bookings  
Table & chair hire

Deanna Darnell

07790 941 601

[bookings@micklehamvh.co.uk](mailto:bookings@micklehamvh.co.uk)

[www.micklehamvillagehall.org.uk](http://www.micklehamvillagehall.org.uk)



Equipment  
available for hire

China ~ Cutlery

Electric urn

Equipment hire

Mary Banfield

01372 373912

[admin@micklehamvh.co.uk](mailto:admin@micklehamvh.co.uk)

## Community Directory

BOX HILL AND HEADLEY HEATH (National Trust) 01306 888793  
Lead Ranger – Federico Ghittoni (Fede) 07342 080109  
[Federico.Ghittoni@nationaltrust.org.uk](mailto:Federico.Ghittoni@nationaltrust.org.uk)  
Friends of Box Hill – Chair Lyn Richards 01737 842889  
[lyn@mra.uk.net](mailto:lyn@mra.uk.net)

BOX HILL SCHOOL 01372 374814  
Headmaster – Cory Lowde [HMPA@boxhillschool.com](mailto:HMPA@boxhillschool.com)

DORKING CRICKET CLUB  
Chairman – Andrew Homewood [homewooda@hotmail.co.uk](mailto:homewooda@hotmail.co.uk)

DORKING GROUP OF ARTISTS  
Exhibition Secretary – Patricia Booth [patriciabooth100@gmail.com](mailto:patriciabooth100@gmail.com)

DORKING LAWN TENNIS & SQUASH CLUB 01306 883629  
Jim Cattermole [jim.cattermole@uwclub.net](mailto:jim.cattermole@uwclub.net)

DORKING RUGBY CLUB 07789 176417  
Jim Evans [jim@flintcottage.net](mailto:jim@flintcottage.net)

THE GARDEN SHED 07759 646353  
Pauline Davis [paulinemdavis@gmail.com](mailto:paulinemdavis@gmail.com)  
Susie Gowenlock 07768 923088  
[susiegowenlock@gmail.com](mailto:susiegowenlock@gmail.com)

JUNIPER HALL FIELD CENTRE 01306 734501  
[enquiries.jh@field-studies-council.org](mailto:enquiries.jh@field-studies-council.org)  
Head of Centre – Maddy Jones [m.jones@field-studies-council.org](mailto:m.jones@field-studies-council.org)  
Friends of Juniper Hall – Suzy Hughes 01483 281935  
[suzy@suzyhughes.co.uk](mailto:suzy@suzyhughes.co.uk)

MICKLEHAM CHILDREN'S PLAYGROUND ASSOCIATION 07767 891772  
Secretary – Sarah Parfitt [sarah@sarahparfitt.com](mailto:sarah@sarahparfitt.com)  
[www.micklehamchoral.org.uk](http://www.micklehamchoral.org.uk)

MICKLEHAM CHORAL SOCIETY 01372 373106  
THURSDAYS 8 - 10 pm – MICKLEHAM VILLAGE HALL  
Conductor – Juliet Hornby  
Secretary – Mike Benson [mike\\_benson@btinternet.com](mailto:mike_benson@btinternet.com)

MICKLEHAM OLD BOX HILLIANS FOOTBALL CLUB 01372 374745  
Secretary – John Atewell

MICKLEHAM PARISH COUNCIL [www.micklehampc.org.uk](http://www.micklehampc.org.uk)  
SEE WEBSITE FOR MEETING DATES 01372 379381  
Chairman – Rev'd David Ireland [rev.ireland43@btinternet.com](mailto:rev.ireland43@btinternet.com)  
[clerkatmpc@gmail.com](mailto:clerkatmpc@gmail.com)

Parish Clerk – Feena Graham 01306 882547  
MICKLEHAM PARISH MAGAZINE [editor@micklehammag.co.uk](mailto:editor@micklehammag.co.uk)  
Editor – Sue Tatham 01306 884025  
[editor@micklehammag.co.uk](mailto:editor@micklehammag.co.uk)

Co-Editor – Charlotte Daruwalla

MICKLEHAM VILLAGE HALL 01306 882547  
Chairman – Ben Tatham [chairman@micklehamvh.co.uk](mailto:chairman@micklehamvh.co.uk)  
07790 941601  
Bookings Manager – Deanna Darnell [bookings@micklehamvh.co.uk](mailto:bookings@micklehamvh.co.uk)



## ST MICHAEL'S CHURCH

*within the United Benefice  
of Leatherhead and Mickleham*

INCUMBENT — The Rev'd Will Perry

PARISH PRIEST

The Rev'd Dr Sandra Faccini \* 01372 417664  
NB Corrected mobile number 07763 488961

parishpriest@micklehamchurch.org.uk

\* Main working days: Monday Tuesday and Sunday

CHURCHWARDENS

Timothy Mathieson 07555 597163

TimothyMathieson@aol.com

Catherine Diffey 07790 473167

Mickleham@diffey.me.uk

PARISH ADMINISTRATOR

Alison Wood 01372 376443

admin@micklehamchurch.org.uk

PCC SECRETARY

Caroline Jones 07304271376

pccsecretary@micklehamchurch.org.uk

TREASURER

Richard Siberry 01372 375303

pcctreasurer@micklehamchurch.org.uk

ORGANIST

David Fishwick 0208 7732420

organist@micklehamchurch.org.uk

WEDDINGS CO-ORDINATOR

Elaine Machin 01372 724972

weddings@micklehamchurch.org.uk

BAPTISMS CO-ORDINATOR

Vickie Leney 01306 884054

baptisms@micklehamchurch.org.uk

FUNERALS ORGANISER

Brian Wilcox 01372 374730

dbrianwilcox@btinternet.com

WEBSITE MANAGER

Kelvin Pritchard 07770 280410

website@micklehamchurch.org.uk

PCC ECO GROUP

DAVID KENNINGTON 01372 36230

davidkennington144@gmail.com

[www.micklehamchurch.org.uk](http://www.micklehamchurch.org.uk)

*For information about services for other  
denominations see website pages.  
Search on 'Churches Together Mole Valley'*



## CALENDAR

### October

1	Saturday	10 am 7.30 pm	Coffee Morning at Westhumble Chapel Harvest Supper in the Village Hall
2	<b>SUNDAY – Harvest Festival</b>	11 am	Family Service - <i>note later time</i>
3	Monday	7 pm	Prayer Group Compline in church
6	Thursday		Thursday Lunch in village hall
9	<b>SUNDAY</b>	8 am 11.30 am 6 pm	Holy Communion in church Matins at Westhumble Chapel Sundays at Six - Piano Concert in church
<i>Copy deadline for November parish magazine</i>			
15	Saturday	10 am 10.30 am 7 pm	Bonfire Building starts Westhumble Field Beating the Bounds from Mickleham Church Concert by <i>Silence Please</i> from Singalunga in church
16	<b>SUNDAY</b>	8 am 10 am	Holy Communion Holy Communion in church
17	Monday	3 pm 7 pm	Tea@3 at Westhumble Place Prayer Group Compline in church
20	Thursday	3.30 pm	Messy Church in the village hall
22	Saturday	9 am	Men's Breakfast at the Stepping Stones Eco Church working party
23	<b>SUNDAY</b>	8 am 10 am	BCP Holy Communion at Chapel Holy Communion in church Eco Church working party Church Tour Encore
27	Tuesday	3 pm 7.30 pm	Garden Shed Gardeners Question Time at the Stepping Stones



### Dates for your diary

Thursday 3 <sup>rd</sup> November	Thursday Lunch
Saturday 5 <sup>th</sup> November	Westhumble Bonfire & Fireworks
Sunday 13 <sup>th</sup> November	Remembrance Concert in church
Saturday 19 <sup>th</sup> November	Scalextric Evening
Thursday 1 <sup>st</sup> December	Thursday Lunch
Saturday 10 <sup>th</sup> December	Christmas Cafe at the Chapel
Saturday 16 <sup>th</sup> December	Choral Society Carol Party



## MEMBERS OF THE PAROCHIAL CHURCH COUNCIL

Sarah Blake	Elaine Machin
Mark Day	Tim Mathieson
Andy Diamond	Beverley Mehta
Catherine Diffey	Elizabeth Moughton
Caroline Jones	Kelvin Pritchard
Vickie Leney	Richard Siberry

## ST MICHAEL'S CHURCH COMMUNITY GROUP COMMITTEE

Mary Banfield	01372 373912 mgbbmw@aol.com
Kay Cain	07736 281752 kay__jay@hotmail.co.uk
Mark Day	07852 117249 mickleham@hotmail.com
Andy Diamond	07789 775354 diamo1@hotmail.co.uk
Frances Presley	01306 882473 jasempres@gmail.com
Amy Ward	07709 199292 amycatrionaward@gmail.com

## ST MICHAEL'S CHURCH COMMUNITY GROUP

### HELPING HANDS INCLUDING FOOD FOR FRIENDS

*A service for all residents of Mickleham and Westhumble*

Examples of services we offer:

- Essential shopping / collection of prescriptions
- Changing library books
- Small tasks: eg changing fuses, altering clocks etc
- Dog walking
- Visiting / befriending
- Home-cooked meals for local families going through difficult times

Requests to:

Will Dennis 07903 842674 [wdwdennis@icloud.com](mailto:wdwdennis@icloud.com)  
(who can put requests onto WhatsApp)  
Mary Banfield 01372 373912 [mgbbmw@aol.com](mailto:mgbbmw@aol.com)  
Frances Presley 01306 882473 [jasempres@gmail.com](mailto:jasempres@gmail.com)

*More helpers needed – please contact  
Frances if you can spare some time.*



# Community Directory

Continued from page 13

MICKLEHAM & WESTHUMBLE BADMINTON CLUB  
Membership Secretary Sarah Blake tinkerbell0044@hotmail.com

MICKLEHAM CRICKET CLUB  
Membership contact Will Dennis 07903 842674  
will@micklehamhallfarm.co.uk

MICKLEHAM & WESTHUMBLE HORTICULTURAL SOCIETY  
Chairman – David Kennington 01372 362309  
www.surreycommunity.info/mwhs davidkennington144@gmail.com

MICKLEHAM AND WESTHUMBLE LOCAL HISTORY GROUP  
Chairman – Ben Tatham 01306 882547  
ben@thetathams.co.uk  
www.micklehamwesthumblehistory.co.uk

MOLE VALLEY DISTRICT COUNCIL 01306 885001  
Councillor Elsie Rosam 01306 885695  
elsierosam29@gmail.com

THE ARTS SOCIETIES (FORMERLY NADFAS)  
Betchworth – Mary Venning 01306 883301  
Dorking – Sue Tatham 01306 882547  
Leatherhead – Sarah Sheridan 01306 883699

ST MICHAEL'S CHURCH OF ENGLAND (A) INFANT SCHOOL 01372 373717  
info@stmichaels-dorking.surrey.sch.uk  
Friends of St Michael's School – friendsofstmichaels2017@gmail.com

ST MICHAEL'S COMMUNITY NURSERY  
WEEKDAY MORNINGS – MICKLEHAM VILLAGE HALL  
Supervisor – Hilary Budd 01372 361021  
stmichaelsnursery@btinternet.com

SURREY COUNTY COUNCIL 03456 009 009  
Councillor – Hazel Watson 01306 880120  
hva.watson@btinternet.com

SURREY WILDLIFE TRUST 01483 795440  
info@surreywt.org.uk

TREE WARDEN  
David Kennington 07546 952521  
davidkennington144@gmail.com

WESTHUMBLE NEIGHBOURHOOD WATCH  
Lead Co-ordinator – David Allbeury 07860 227451  
westhumble.neighbourhood.watch@gmail.com

## ADDITIONAL CONTACT INFORMATION

CITIZENS ADVICE  
Dorking – Lyons Court 01306 732302  
Leatherhead – Swan Mews High Street 01306 732301

CRIMESTOPPERS 0800 555 111

POLICE Non-emergencies 101

(often quicker to make online report) <https://report.police.uk/>

Neighbourhood Specialist Team – Dorking Rural East  
General enquiries molevalley@surrey.pnn.police.uk

NHS Urgent and emergency care 111

# Babysitting by local youngsters

Those listed below are at least  
14 years old.

Gracie Owen \*\*07790 900649  
Annabelle Prosser\*

07443 634179

Maisy Presley\* 07720 657327

Martha Pearce 07514 080005

Rory Lee \*\* 07973 360950

Ellie Kim 07773 395575

Chelsea Edwards 07834 695816

Edward Moran 07740 088124

Daisy Armitage \*\*07580 473812

Olivia Newby 07703 110363

\* Holidays only  
\*\* Parent's mobile number

If you would like to add your  
name to this list please get in  
touch with Sue Tatham  
01306 882547

editor@micklehammag.co.uk

No Charge

## Advertising in the Parish Magazine

Please contact  
Sue Tatham (as above)  
Small ads: a nominal fee is  
charged for ads where items or  
services are bought or sold.

We have been advised to print  
the following reminder:  
*We cannot guarantee the  
quality of the goods and  
services offered by our  
advertisers.*



# Superstar Couple

On Sunday 21st August Leigh and Karen Williams of Mickleham took part in an Ironman triathlon in Copenhagen. For the couple this was the day which marked the end of their gruelling 10-month training programme, which had been stopped and started several times due to the pandemic. The Ironman competitions take place worldwide and this particular race had more than 2,000 competitors; some elite athletes and some like Leigh and Karen who do it 'just for the fun and challenge'.

The race starts with an open water swim of 3.5 miles, followed by a 112- mile bike ride and culminates in a 26-mile marathon, so in total 141.5 miles of exercise using every muscle, tendon and bone. Aside from the physical strength needed, imagine the stamina, determination and strength of character required, as this race is competed as a single person, so no team beside you to take up any slack. Our couple did amazingly as they both successfully completed all three

disciplines well within the allotted times and finished with extraordinary total times of 14 hours 33 minutes for Karen and 13 hours 57 minutes for Leigh. I for one cannot imagine exercising for nearly 15 hours in one go.

Karen and Leigh had fantastic support along the course in Copenhagen from family and friends and many more of us followed their progress on our phones and tablets all through the day (and well into the evening). Speaking with both of them on their return home, they were extremely grateful to everyone for all the cheers and shouts of encouragement on the day and were also very conscious of all their friends back home who they knew would be following them online. In fact they went as far as to say they do not feel they could have finished the race if it had not been for all those people 'behind' them. It just goes to show the power of positive vibes – though we all feel that it was their hard work and sheer grit that got them to the end

I know I can speak for all Karen and



Leigh's friends when I say how proud we are of both of them and how much we are in awe of their outstanding achievement. Now... what's next?

Carol Dixon

# What was it like to meet HM the Queen?

Do you have special memories about encounters with HM Queen Elizabeth II or personal experiences during this period of mourning? If you let us know your story, we will include it in an article in the November issue of the magazine. Send to **editor@micklehammag.co.uk** before Sunday 9th October with any photographs you have available.

Many people went to the Westhumble Chapel of Ease and St Michael's Church to write messages and sign the books of condolence. After the period of mourning the books will be gathered and combined with all those from round the country, an enormous record of sorrow, affection and gratitude for a long and dedicated reign.

Top: the book of condolence at Mickleham;  
below: the book at Westhumble



# Community News

Welcome to: David and Louisa and their two children who have moved to Moleford Cottages, Westhumble from Pixham; and Toby and Ailsa Willens who have moved to Pilgrims Way with their young sons Henry and Joshua.

## Keeping in touch

If you would like to join the Mickleham and Westhumble WhatsApp Group please contact Will Dennis via **will@micklehamhallfarm.co.uk**

If you would like to receive emails from Westhumble Neighbourhood Watch about local issues, please contact David Allebury via **westhumble.neighbourhood.watch@gmail.com**





## Juniper Hall - 75 years as an FSC centre

Saturday 3rd September marked our 75th Anniversary of Juniper Hall as a Field Studies Council centre. To start the afternoon guests were greeted with a glass of Pimms, and it was great to see everyone mingling and sharing their memories of their time with the FSC over the past years. Once seated in the marquee we all enjoyed an incredible cream tea including delicious sandwiches, cakes and scones all made in-house by our very talented catering team.

We were very fortunate to hear from David Streeter, one of our vice patrons who throughout his speech reminisced on his first memories of Juniper Hall as an FSC centre 75 years ago. It was very interesting to learn that when we first opened as an FSC centre, the building was completely covered in Virginia Creeper, which inexplicably died back on its own accord within weeks of our opening.

We combined this event with the official opening of our new pond. This is a project that has been in the pipeline for more than 10 years. Thank you to our Friends of Juniper Hall chair, Mavis Peart

who cut the ribbon to officially open the pond alongside Peter Westgarth (ex CEO of the Duke of Edinburgh award). After raising a glass to the new pond, Martha and Verity Ward showed us all how to pond dip. It was amazing to see how much wildlife has already migrated into the pond in such a short amount of time.

The pond could not have happened without the very generous donations, thank you to all those that donated to our pond fund. It is an asset of our grounds which will be very well used and cherished for years to come.

To complete the evening we were treated to a live band - The Surrey Pumas. It was fantastic to see so many people up on the dance floor celebrating this special event with us.

I understand Rev'd Sandra Faccini is very excited to start reading her book on beetles that she successfully won in the raffle, and is hoping to find some rare beetles living in the rectory garden!



Top: Opening the pond;  
Above: before the pond

Thank you to all the staff of Juniper Hall, whose hard work made this event so special.

Kayleigh Hunter

A series of recitals in St Michael's by talented local musicians and their friends

*Sundays at Six*  
9<sup>th</sup> October

**A Piano Evening**

With Tracy Kennington, Caroline D'Criuz

and other guests.

In aid of Chipembele Wildlife Education Trust,  
Luangwa National Park, Zambia

Come along at six o'clock on a Sunday evening and enjoy lovely music  
in the tranquil surroundings of our ancient parish church.  
No ticket needed – retiring collection.



Can you translate this diagram  
into words? Say what you see.

≡ e.g. ≡

Answer on page 26

**Robust plastic carrier bags wanted for delivering parish  
magazines and food bank items**

**Please leave at food bank collection points – see page 26.**



You may be reading this while recovering from taking part in Beating the Bounds on 25th September. I hope that those who took part enjoyed it without too many aches and pains. We are now looking forward to the second part of the walk which will be around Mickleham on Saturday 15<sup>th</sup> October.

Those coming from Westhumble are asked to meet at the Chapel of Ease in Crabtree Lane to leave promptly at 9.45am and walk to St Michael's Church to join those walking from Mickleham. We plan to leave St Michael's promptly at 10.30am. Our first joining point is at the Cockshot National Trust Car Park, Headley Lane which should be at about 12 noon. The next stop will be lunch at The Box Hill Café which we should reach about 1.15 pm where

Mickleham & Westhumble Local History Group  
and the St Michael's Church Community Group

**Part 2 Mickleham / Box Hill**  
**Saturday 15<sup>th</sup> October**

there is the National Trust parking for those either joining the walk or leaving. There will be a bit of beating on the Donkey Green! Please bring your own lunch and drink, the last is important but we suggest you go easy on the alcohol. The National Trust café has a full menu and if you do not want to carry too much we would encourage you to buy food and/or drink there.

There is no need to register that you are coming, but we would like to stress that these timings are very approximate and ask that people should contact us if they intend joining us along the route. If you decide to join at either the Cockshot car park or the café on Box Hill we ask that you to provide a phone number so that we do not leave without you. There will be guides at the front and back of the group and the pace will be that of the slowest walker.

As before, the walk will take place

irrespective of the weather, that is unless another Storm Eunice is forecast or no-one turns up! Dogs are very welcome but must be under control, (please note that we may find livestock in one or two fields). We would like to thank the Wates Family for allowing us to cross part of Birchgrove Farm, and although we did consider whether this should be a fund-raising event it was felt that it was something to be left to the individual.

We look forward to seeing you, again, and hope that Sandra has misplaced her beating stick. Please ring or email if you have any questions.

Roger Davis 07759 042406

Will Dennis 07903 842674

Frances Presley 01306 882473  
[jasempres@gmail.com](mailto:jasempres@gmail.com)

Please be aware that phone reception is not reliable everywhere on the walks.

## Westhumble Bonfire & Fireworks

Saturday 5<sup>th</sup> November

This year's bonfire and fireworks on Saturday 5<sup>th</sup> November will take place in the same field as previous years adjacent to the railway (Westhumble Field).

If you have come to live in Westhumble since 2019 you may not know about the institution of the Bonfire and Fireworks. It is a very popular community event but it depends on members of the community taking part in the building of the bonfire before the event.

**Building the bonfire will begin on  
15<sup>th</sup> October.**

**Bonfire Building  
OCTOBER**

Saturday 15<sup>th</sup> from 10 am

Sunday 16<sup>th</sup> from 2 pm

Saturday 22<sup>nd</sup> from 10 am

Sunday 23<sup>rd</sup> from 2 pm

**FINISHING TOUCHES**

Saturday 5<sup>th</sup> November  
from 10 am

Please do not leave it to the usual few to do the work. We need lots of new helpers so that the old-stagers can pass on their bonfire-building skills ensuring that this event can continue. Everyone is welcome. Even if you can only spare a short amount of time please come along. Refreshments will be available.

Please remember that a bonfire is a dangerous place even before it is lit, so please keep small children and pets under supervision.

On the day the torchlight procession will leave at 5.45 pm from the junction of Burney Road, Chapel Lane and Adlers Lane. Soup and sausages will be available from the barbecue in the field for a small donation.

Everyone in Mickleham and Westhumble is welcome to attend along with their relatives and friends: with more people attending the charge per person can be kept down. Unfortunately costs have risen considerably, so we are asking for donations of £7 per head, including



children. (Please make cheques payable to Neil Mason). Donations in advance would be appreciated, please deliver or send to:

Neil Mason  
Hillcrest, Chapel Lane  
Westhumble RH5 6AH  
Neil Mason, Entertainments Secretary

*If you have material for the bonfire (no rubbish, please) bring it to the field and leave it near the site BUT NOT BEFORE 15<sup>th</sup> OCTOBER. No YEW wood or timber with screws or nails, as these can be dangerous to animals. Unfortunately we do not have transport to collect material from around the houses.*



## CARPET REVIVAL REVIVING CARPETS & UPHOLSTERY IN SURREY

Covering Dorking &  
all surrounding areas

We clean to a professional standard using eco-friendly chemicals and the latest equipment.

Offering a thorough survey, clean and customer satisfaction. Certified and insured.

Call 01306 740035 / 07747 122128  
or visit [www.carpetrevival.co.uk](http://www.carpetrevival.co.uk)  
to book a free home visit/quotation

## STEVE LAWRENCE

PLUMBING HEATING ELECTRICS  
Boiler installation, maintenance and repair  
Based in Mickleham Local references  
30+ years' experience

07760 266718  
[stevenlaw37@hotmail.com](mailto:stevenlaw37@hotmail.com)

## Vivien Cresswell Made-to-measure Soft Furnishings

Curtains Roman Blinds Cushions  
Extensive range  
of fabrics



01737 843858  
[info@cresswellscurtains.co.uk](mailto:info@cresswellscurtains.co.uk)  
[www.vivienecresswell.co.uk](http://www.vivienecresswell.co.uk)

## Rowlatt Garden Services

**RGS**  
EST.1985

**Gardens large and small  
we maintain them all**

All aspects of private and commercial garden  
and estate maintenance landscaping undertaken  
Fencing grass & hedge cutting

Telephone: 01737 841524 Mobile: 07887 838666  
References available upon request



Joseph

## De Decorators

• Painting • Decorating • Wallpapering • Plastering • Tiling  
Mickleham based 40 years' experience  
01372 372331 07973 358 932



## Helping Hands

Following the piece in the magazine a little while ago about needing more names on the list for Helping Hands, at the risk of repeating myself, I ask please for more volunteers. I now have a list of four volunteers, so it is growing. It matters not whether you have a skill in plumbing, electrics, sewing, gardening, or even tiddleywinks, sometime, somewhere in Mickleham or Westhumble, a helping hand is needed.

Of course, there is no charge for using either Helping Hands.

Please contact me if you feel able to be added to my list of helpers, and/or contact:

- Will Dennis 07903 842674 [wddennis@icloud.com](mailto:wddennis@icloud.com)  
(who can put requests onto WhatsApp)
- Mary Banfield 01372 373912 [mgbmw@aol.com](mailto:mgbmw@aol.com)
- Frances Presley 01306 882473 [jasempres@gmail.com](mailto:jasempres@gmail.com)

Many thanks, Frances Presley

## ShedArt Paints for Ukraine



Saturday 1<sup>st</sup> October, Sunday 2<sup>nd</sup> October  
and Tuesday 4<sup>th</sup> October  
11 am to 4 pm  
ShedArt Gallery

Admission: FREE Parking: FREE  
for directions see [www.shedart.co.uk](http://www.shedart.co.uk)  
email: [shedart@shedartgallery](mailto:shedart@shedartgallery)

## Garden Shed's Visit to Great Comp

Ahead of the second heat-wave, Garden Shed members visited Great Comp garden in Kent for a tour with Kate, the assistant Curator. Great Comp is a 400 year-old Georgian farmhouse currently undergoing major restoration, and is surrounded by a seven-acre garden. Initially the lawns were used in 1917 to host the international touring women's cricket team before being developed by Roderick and Joyce Cameron in the 1950s. The garden was first opened to the public in 1968 and much of the planting remains unchanged.

Despite the dry conditions the garden offered formal and informal areas packed with colourful borders, an Italian garden, woodland walks and distressed ruins created using stones reclaimed from the garden by past volunteers. William Dyson the current Curator and former gardener at Great Comp, is one of Europe's leading *Salvia* experts and his extensive collection was evident throughout the garden.

Highlights included ancient woodland and magnolia trees, ornamental



Some features in the garden; bottom right  
Kate tells the group about the garden.

grasses, hydrangeas, salvias, dahlias, exotic coloured perennials and of course, an excellent homemade lunch from the on site, Old Dairy Tearoom.

The Garden Shed Team



## Gardener's Question Time

Bring along your questions and specimens and  
we will do our best to find the answers.

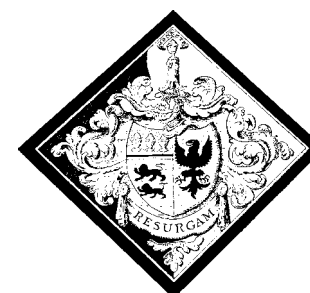
Monday 24<sup>th</sup> October 2022 7.30 pm  
The Stepping Stones Pub, Westhumble

Tickets £6 at the door - no need to book  
See our website for details [www.gardenshed.club](http://www.gardenshed.club)  
Any Questions  
Pauline Davis 07759646353 or [paulinemdavis@gmail.com](mailto:paulinemdavis@gmail.com)



## Mickleham Choral Society's Marquee for Hire

White marquee, 10 m x 4 m  
with sides, pegs and instructions  
£50 per day (or £75 with advice)  
Wine glass hire £6 per 2 doz  
Call 07778 662338 or email  
[philrandles@talktalk.net](mailto:philrandles@talktalk.net)



## St Michael's Church Tour Encore Sunday 23<sup>rd</sup> October at 3 pm

Come and find out about the history of the church in Mickleham, its many artefacts and the interesting people who worshipped here.

By popular request Sue Tatham is repeating last May's church tour.

Tea and cake will be provided afterwards: please let Alison Wood know if you are planning to come on 01372 376443 or email [admin@micklehamchurch.org.uk](mailto:admin@micklehamchurch.org.uk)  
No charge. Donations to St Michael's Church



## Do you need a plasterer?

Over 25 years' experience working on extensions, renovations, new-build and conversion projects for builders and domestic customers alike.

Our work is to a high standard and we are fast. Give Chris a call for a free no obligation quotation.



**CHRIS C GUY  
PLASTERING LTD**

ALL ASPECTS OF INTERNAL & EXTERNAL PLASTERING  
07740 860560 chrisguyplastering@gmail.com

**We provide the best possible care for your feet**

**Book your appointment:  
01372 454583**



**Bookham  
Chiropody & Podiatry Clinic**  
Diagnosis, Expert Treatment & Professional Care  
for Your Feet

**29 High Street, Great Bookham KT23 4AA**  
[www.bookhamchiropody-podiatry.co.uk](http://www.bookhamchiropody-podiatry.co.uk)

## Domestic Appliance Repairs

30 years' experience repairing and installing  
all gas and electric domestic appliances



- Cookers Microwaves
- Dishwashers
- Washing machines
- Fridges / Freezers
- Water coolers
- Coffee machines
- Tumble dryers

**Contact: Andy 07895 719706**  
[andy@kirksdomestics.co.uk](mailto:andy@kirksdomestics.co.uk)



07871 051661 / 01372 458616  
[timskerrittgroundworks.co.uk](http://timskerrittgroundworks.co.uk)

**TimSkerritt**  
LANDSCAPE & GROUNDWORKS

**Turn your vision into a reality**

Tim Skerritt Landscape & Groundworks offers a comprehensive range of services to both commercial and domestic clients across Surrey.

From hard landscaping to extensive site excavations, we offer a high quality, honest, reliable and competitively priced service, guaranteed to meet all your needs. Contact us today to find out more.



**SURREY HILLS  
HEATING LTD**

**DOMESTIC BOILER SERVICING  
AND BREAKDOWN**

**OIL, LPG & GAS BOILERS**

Call Dathan on: 07944 575970  
[sales@surreyhillsh heating.co.uk](mailto:sales@surreyhillsh heating.co.uk)  
[www.surreyhillsh heating.co.uk](http://www.surreyhillsh heating.co.uk)



**LPG**



**PAINTING  
DECORATING**

ANDREW CLARK 07800 796 737

INTERIOR & EXTERIOR • CARPENTRY • HANDYMAN

## Dorking Pest Control Services

Local Authority Approved Contractors



Our Services include: Wasps Bee Swarms Hornets Rats Mice  
Squirrels Fleas Flies Ants Cockroaches Bed Bugs  
Rabbits Moles Foxes and Deer



• Domestic Commercial and Industrial • Contract Work • Preventative Control Programmes

**Experts in pest control throughout Surrey**

Office: 01306 743001 Ivor: 07710 117491 Chris: 07971 519415

[www.dorkingpestcontrol.com](http://www.dorkingpestcontrol.com)

## CRYPTIC DELICACIES

See bottom of page 28 for last month's missing instructions. Explanations, definitions underlined, as usual:

**Across clues**

**1 Wretched? Time to reverse to Havana**

**(6) A: TRAGIC**

'Time' = T, + Havana = CIGAR reversed

**4 Obviously he is able to be heard speaking with vulgarity from the island**

**(8) A: CORSICAN**

'Course 'e can' sounds like...

**10 Sooty puts on lots of metal rings as protection from being exposed** (9) **A: BLACKMAIL**

'Sooty' = BLACK, 'lots of metal rings' = MAIL (as in chain mail)

**11 Quarrel resolved by using oversized courgette if not married** (5) **A: ARROW**  
'oversized courgette' = mARROW, with M for 'married' removed

**12 Alone? Then moo like a cow loudly** (4) **A: SOLO**

'Then' = SO, 'moo like a cow' = LOW, sounds like...

**13 Pike often seems immature in the presence of this stalwart water bearer with a phone** (10) **A: MAINWARING**  
'water bearer' = MAIN, 'with' = W, + A + 'phone' as a verb = RING

**15 Burns diminutive fragments in little hoppers** (7) **A: RABBITS**

'Burns diminutive' = RAB (as in Rabbie Burns), 'fragments' = BITS

**16 Esteemed colonisers, here is a display of oomph, greeting and bunkum** (6) **A: SAHIBS**

'a display of oomph' = SA (for Sex Appeal, a common crosswordy thing), 'greeting' = HI, bunkum = BS (i.e. Bullsh\*t)

**19 What creates an image is hidden inside a secret in a mystery in an enigma** (6) **A: RETINA**

Hidden word

**21 Sprawling building for politician in merry royal times** (7) **A: COMPLEX**

'politician' = MP in 'merry royal' = COLE (the old king who rhymed with soul) + 'times' = X (as in multiplication)

**23 Sensual? Cultivate the novel if not a fan of submission** (6,4) **A: ANIMAL FARM**

'Sensual' = ANIMAL, 'Cultivate' = FARM

**25 For variety, put a load of words into a computer** (4) **A: TYPE**

Double definition

**27 Former inhabitant of 11 is like a leprechaun that has placed its head in its behind** (5) **A: RISHI**

'like a leprechaun' = IRISH, first letter moved to last (and 11 is in Downing Street)

**28 Cover stretchers to provide suitable places for cases** (4,5) **A: ROOF RACKS**  
'Cover' = ROOF, 'stretchers' = RACKS (for torture)

**29 Restaurant visitor may do an impression of someone spectacular** (8) **A: DYNAMITE**

'Restaurant visitor may' = Diner might, sounds like...

**30 Harry's lost money to those keeping safe in a bank** (6) **A: OTTERS**

'Harry's' = pOTTER's, lose the apostrophe and the P for pence for 'money'

**Down clues**

**1 Bees tour aberrant organisation. Indeed.** (2,2,4) **A: TO BE SURE**  
Anagram of 'Bees tour'

**2 Free to misrepresent via a label** (9) **A: AVAILABLE**  
Anagram of 'via a label'

**3 Being excessively meticulous about being guillotined is disgusting** (4) **A: ICKY**

'Being excessively meticulous' = pICKY, beheaded...

**5 School alumnus pines for quadrangles** (7) **A: OBLONGS**

'School alumnus' = OB (old boy), pines = LONGS

**6 Shame at toy being played with when not inclined to go into the office** (4-2-4) **A: STAY-AT-HOME**

Anagram 'Shame at toy'

**7 Love a duck, soldier - that's particularly what the queen likes!** (5) **A: CORGI**

'Love a duck' = COR, soldier = G.I.

**8 Recent weather is astrologically woo-woo** (3,3) **A: NEW AGE**

'Recent' = NEW, 'weather' (as in the verb) = AGE

**9 Badger is acting in personnel department as head of security** (6) **A: HARASS**

'acting' = A (as in acting rank), 'personnel department' = HR (human resources) + A + 'head of Security' = S

**14 Confusingly I limit arms as well as glorifying the army** (10) **A: MILITARISM**

Anagram 'I limit arms'



**17 Pain in the guts? Yell 'Beach!' with wild abandon** (9) **A: BELLYACHE**  
Anagram 'Yell Beach'

**18 Outgoings from old members having number one out of sight** (8) **A: EXPENSES**

'old' = EX, 'members' = PENISES, 'number one' = I which is removed

**20 Initially two-times Andrew Tatham then finds it raises sir's temper** (2,5) **A: AT FIRST**

'Initially two-times' means you replace those words with 'Initially Initially' - the first 'initially' is the definition and the second tells you to take the initial letters as marked

**21 Charlie gives you what puts lead in your pencil** (6) **A: CARBON**

'Charlie' = C (in NATO phonetic alphabet), which is the symbol for...

**22 Feeling of loathing? It's essential to evaporate that red mist** (6) **A: HATRED**  
Hidden word

**24 Brand created by him is found in 16' enclosure** (5) **A: IBSEN**

Clue 16 = SAHIBS, hidden word in 'sahIBS' ENclosure', and one of Ibsen's plays was 'Brand'

**26 Pluck small pebbles from drive!** (4) **A: GRIT**

Triple definition

NAPOLEON can be connected to SOLO (in 'The Man from U.N.C.L.E.'), MAINWARING (the pompous captain's nickname in Dad's Army), COMPLEX, ANIMAL FARM (the pig modelled on Boris Johnson), DYNAMITE (2004 film which may be too modern a reference for some), CORSICAN (he was born in the capital Ajaccio), and RABBITS (in 1807 a celebratory rabbit hunt was organised for Napoleon but on release the hundreds of tame bunnies did not run away but bounded straight for Napoleon looking to be fed - the swarm had to be beaten off his legs with sticks as he fled to his coach).

I hope this helps and it would be great to get any feedback via [andrewt@andrewtatham.co.uk](mailto:andrewt@andrewtatham.co.uk)

Andrew



**10 Year**  
Manufacturer's  
warranty available  
with any new boiler  
Oil, LPG and Gas Registered • Consult • Design • Install • Maintain

**SEENERGY**  
INNOVATIVE ENERGY SOLUTIONS

Call for a free quote on  
**01306 735499**  
[www.seenergy.co.uk](http://www.seenergy.co.uk)  
[enquiries@seenergy.co.uk](mailto:enquiries@seenergy.co.uk)

24 HOUR SERVICE  
Best Buy  
Which?  
Gas Boilers September 2008

**TONY WINCH**  
CARPENTER, JOINER  
& CABINET MAKER  
[www.tonywinch.com](http://www.tonywinch.com)  
01306 742373  
07969 016 924

**Get IT Fixed, Get IT Connected**  
Expert Repair & Maintenance



Brockham based. No call out charges. Fully transparent quotations with no hidden costs. We make technology work for you.

Call us now on **01737 845980** ChalkHill Systems  
[www.chalkhillsystems.co.uk](http://www.chalkhillsystems.co.uk)

**Building Plans**  
For home improvements & extensions  
Including planning & building regulations  
Fast efficient service at competitive rates

**MICHAEL LLOYD** CEng MICE  
For free consultation:  
Phone: 01483 205479 or 07958 791 402

**M & R BUTLER**

- GENERAL HOUSE MAINTENANCE
- EXTERNAL & INTERNAL DECORATING
- BESPOKE CARPENTRY
- LOCAL REFERENCES
- 40+ YEARS EXPERIENCE

07776256131 / 07896015771



**RWP**

Extensions and alterations often require a  
Structural Engineer

**Robert Wynter & Partners Ltd**  
01306 879875  
Book House Vincent Lane  
Dorking RH4 3HW

**remedial roofing**  
For people with roof issues and deficiencies

- New roofs – slate & tiled roof specialists
- All roof repairs moss removal & gutter clearance
- Flat roofs traditional felt & GRP fibreglass
- New uPVC Fascia soffit & guttering

Obtain an up-to-date report of remedial roofing on [www.checkatrade.com](http://www.checkatrade.com)

ALL WORK GUARANTEED  
Call us today for a FREE quotation on:  
01306 304736 | 07852 833802  
[info@remedialroofing.co.uk](mailto:info@remedialroofing.co.uk) [www.remedialroofing.co.uk](http://www.remedialroofing.co.uk)




As I write this Parish Magazine article, we have just learned of the very sad passing of our Queen, Elizabeth II. Our Queen for 70 years, it is difficult for us to think that many of the children in the nursery now will only really learn of her in history books. Nonetheless, we wanted to mark the occasion and were very pleased that we were able to visit St Michaels Church to hear their bells being rung on 9<sup>th</sup> September. Some children were able to recall Platinum Jubilee celebrations, and with the help of the marvellous Paddington Bear sketch, recognise and understand that she was a very old lady. We do talk about the passing of loved ones or loved pets at nursery and have several story books that help contextualise this difficult issue.

During the summer holidays we have been developing our onsite Forest School area. Using some of the cut branches from the felled ash trees and other trimmed brushwood we are creating a 'dead hedge'. The dead hedge will create a habitat for insects and beetles as well as a rich



Top: Listening to the bells in memory of HM the Queen; above making a home for our pretend hedgehogs.

feeding ground for small mammals such as hedgehogs. We also placed a wildlife camera on the site to see what visitors come to the area when we are not in nursery. The camera uses a motion sensor to capture passers by during the day and night. We have been delighted with the photographic capture of such visitors, many birds including a beautiful thrush and wren, mouse, vole, plenty of rabbits, a fox; and we were somewhat surprised by a visit from a badger! There is also a cat, maybe you recognise it? This amazing and relatively cheap camera device (ours was about £40) has given us a real insight and desire to understand more about wildlife that passes through. So if you are struggling to think of a unique Christmas gift, I highly recommend it!

Hilary Budd



Above: some of our wildlife visitors.  
Below: Do you recognise this cat?



## Mickleham Children's Playground Association



Atmospheric pictures taken at the Quiz Night for the Mickleham Playground fundraiser mentioned in the article on page 5.





## Mickleham Village Hall Dell Close

Weekdays 9.15 am - 12.15 pm (term time)

### WITH OPTIONAL LUNCH CLUB

On Mondays and Thursdays there is the option for children to stay until 2.45 p.m.

Maximum 26 children per session

• playing naturally • learning naturally

We offer an excellent range of pre-school activities for 2½ to 5 year-olds where they can learn through play in an informal friendly atmosphere.

Contact us for more information about admissions

01372 361021 [www.stmichaelscommunitynursery.co.uk](http://www.stmichaelscommunitynursery.co.uk)

## Solution to the September crossword

Across: 1 Tragic 4 Corsican 10 Blackmail 11 Arrow 12 Solo 13 Mainwaring 15 Rabbits 16 Sahibs 19 Retina 21 Complex 23 Animal Farm 25 Type 27 Rishi 28 Roof racks 29 Dynamite 30 Otters

Down: 1 To be sure 2 Available 3 Icky 5 Oblongs 6 Stay-at-home 7 Corgi 8 New Age 9 Harass 14 Militarism 17 Bellyache 18 Expenses 20 At first 21 Carbon 22 Hatred 24 Ibsen 26 Grit

## BRAIN TEASER answer: A shining example

## Suitable items for the foodbank collection

Tinned veg / tomatoes / soup / sauces / baked beans Washing-up and cleaning products

Powdered milk / UHT milk (green and blue only) Tissues / paper towels / tampons

Rice pudding / long life sponge puddings Men's / women's toiletries

Coffee / tea bags / long life fruit juice Laundry products

Pasta / rice / pulses / instant mash Nappies

Jam / honey / marmalade / spreads Pet food

Sugar (500g bags only)

**Please do not include  
out-of-date items or those  
that require refrigeration**



### LOCAL FOOD BANK COLLECTION POINTS

#### MICKLEHAM

Garden Corner off Old London Road  
Mary Banfield 01372 373912

#### WESTHUMBLE

St Anthony Pilgrims Way  
Sue Tatham 01306 882547



**D**orking Museum has a range of exhibitions and activities to offer in October. One is Hedgerow Heritage: This autumn the Museum is hosting an exhibition in conjunction with the Surrey Wildlife Trust's Hedgerow Heritage Project, an ambitious 4-year project aiming to restore and protect hedgerows across the North Downs

## Dorking Museum

Biodiversity Opportunity Area.

Hedgerows are an essential part of our natural heritage and support a variety of plant and animal species. Since 1945, there has been a serious decline in the number and condition of these essential habitats with their cultural, environmental and historic value. The exhibition explores the history and heritage of the area's hedgerows, their importance to the environment and

community, and how they might be restored and renewed for the future.

You can find out more about this and other activities by visiting [www.dorkingmuseum.org.uk](http://www.dorkingmuseum.org.uk). Enquiries: [admin@dorkingmuseum.org.uk](mailto:admin@dorkingmuseum.org.uk), phone 01306 876591. Dorking Museum, 62 West Street. Thursday 1pm-4pm, Friday and Saturday 10am-4pm. Free entry, but donations welcome.

## Rested and Ready

The children have settled beautifully into another academic year. We welcomed another cohort of new families in early September and everyone seems to be rested and ready after a long summer break.

### Neutral Classrooms

The learning environment is very much like a third teacher in the classroom. At St Michael's we have been thinking long and hard about our approach to our learning and enabling environments and what sort of displays and activities we could have around the classrooms, which might work well. We want to ensure that the learning environment is both inviting and captivating but also nurturing and promotes a sense of wellbeing and calmness as this supports learning readiness. We have decided to go for an approach that many schools are now embracing and this is often called 'A neutral classroom'. This type of classroom normally has more minimal teaching or display walls, calming colours, is devoid of clutter, has soft lighting and uses as many natural materials as possible in the environment. We have created areas in our classrooms that are themed for exploration so that children can wonder and think and use their creative side.

### Stand Up, Stand out

Each half term, as a school, we take the time to learn about a person who has made a significant contribution and impact in society for various different

reasons. We call this project, 'Stand Up, Stand Out' because the individual has gone out of their way to make a stand and make a change. In the past we have looked at famous people such as Nelson Mandela, David Attenborough and Amelia Earhart to name but a few! We begin by discussing the individual in a worship through the series of books 'Little People, Big Dreams'. Due to the Queen's passing, we have decided to dedicate this half term's 'Stand Up, Stand Out' focus to Queen Elizabeth. Over the coming weeks, we will be talking to the children about the Queen, her life, her family, her reign and the significant impact she has made on many.

### Readathon

Last term, the children took part in something called 'Readathon'. This is a project set up by a charity. Children are encouraged to read as many books, magazines and any other reading material, as much as possible and be sponsored by friends and family to do so. The money raised buys books for schools and brings the power of stories to children in hospital via their mobile bookcases and resident storytellers. The children fully engaged with the project and managed to raise a staggering £354!

This project has the added benefit of promoting a love of reading in our children.

Nicola Cleather  
Head of School



**St Michael's  
School**

[stmichaels-dorking.surrey.sch.uk/](http://stmichaels-dorking.surrey.sch.uk/)



Art with items collected from our grounds



Neutral classrooms



Maths learning



Things to explore



See page 3 for details





# Cryptic Crossword

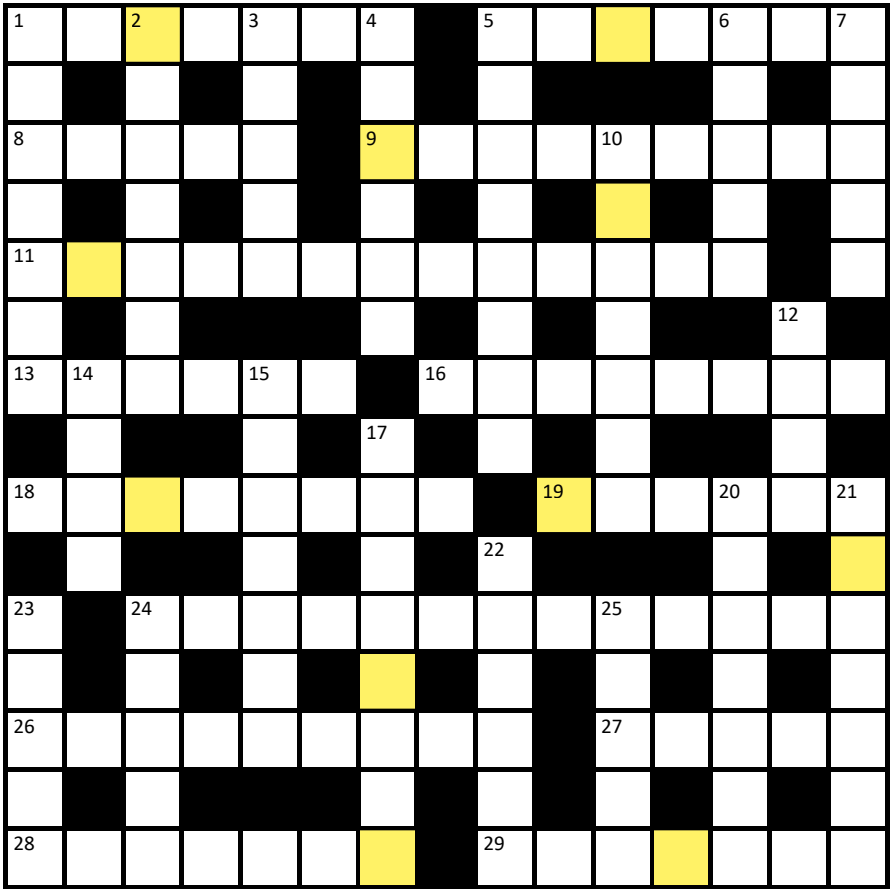
5A, 24A, 28A, 29A, 1D, 2D, 10D, & 23D are linked to what can be made from the golden squares (11)

Across

- 1 Dog is on schedule to return with someone who has the keys to the museum (7)
- 5 Cap'n Bob gets by... (7)
- 8 Forbid Boris's brother to get an essential ingredient to what could be called true Conservative grass? (5)
- 9 Put Berlin into chaos with proposed new layout (9)
- 11 Large dogs hate barking like Brexit negotiators always seem to be (2,11)
- 13 Dangle a carrot in front of some of the guests at the exact moment I celebrate (6)
- 16 No dropping off in the sack as minion does a lively dance (8)
- 18 Means for getting rid of wee gremlin in Act 3 (8)
- 19 Sweeps dole money around the Princess of Wales (6)
- 24 Hitler loses to crooked cat known for having irregular marks (13)
- 26 Damage company car, an old Land Rover? (5,4)
- 27 His Magnificent Highness shows a bit of leg (5)
- 28 Replaced mad liar with one in charge of sinking ships (7)
- 29 For example, George V became this when putting member into flat beer alongside the men (7)



Concert in St Michael's Church on Sunday 18th September, part of the Heritage weekend.



Down

- 1 How old a taxi is can be said to determine what soup can be made of (7)
- 2 Looking for curly hair? Try outstaring letterboxes (7)
- 3 Lipping performance of 'Air for G String' (5)
- 4 Very small people have their head replaced with random top frothing disorder (6)
- 5 Vocally perform to cover silence whilst suggesting silence (8)
- 6 Placidness is not even a response when asked to talk about a range of French breads(?) (5)
- 7 Spinner is partial to roast parrot or heron (5)
- 10 Dandy has a way to set brim of hat at an angle to allow for the ears (7)
- 12 Check out about one hundred craps (4)
- 14 Zero sympathy for celebrity boat builder (4)
- 15 Good day to applaud the moon (7)
- 17 I fear loo break will be something that might make me go faster (8)
- 20 Pine tree is topped and spruced up to make it look more petite (7)
- 21 Brimstone finally flies south to see itself briefly twice (7)
- 22 On the beach remains a mineral worth refining (6)
- 23 Mark, you can order that from amazon.com. Mark? Mark! (5)
- 24 Captain Morgan's after the first couple to make a vibrating sound (5)
- 25 'Tis the exercise for those who are lying (3,2)

Andrew Tatham

## Crossword in the September Issue

Apologies that a gremlin led to the instructions for the golden squares being missing in the last magazine. If you would like to have a go with them, here they are:

The golden squares when unscrambled can be connected to 12, 13, 21A, 23, 29 & 4 (and also 15 in rather a surreal story) (8)

Editor

## Need help with your accounts?

Running a business needs time and energy – don't waste your time working on your accounts when you can work on your business instead!  
At a4c we provide fixed fee accountancy solutions with friendly support throughout the year. Services include accounts tax returns VAT payroll book-keeping etc.  
Friendly approachable and local to Dorking – we enjoy getting to know our clients so call us today for a no obligation chat.  
**We LOVE numbers so YOU don't have to!**  
**01737 652852**  
esther@a4cgroup.co.uk  
www.a4cgroup.co.uk



RANMORE RENOVATIONS

## LOCAL BUILDER

New bathroom installation specialist  
plumbing/heating  
electrics plastering & tiling  
decorating Karndean flooring.  
All building works and property maintenance undertaken.  
All works guaranteed  
36 years' experience

Please contact Damian  
07940 599845 / 01306 880332  
musgrovebuild@gmail.com



**01306 88 55 33**

For quotes or to make a booking  
email us on: [Enquiries@dorkingtaxis.co.uk](mailto:Enquiries@dorkingtaxis.co.uk)  
[www.dorkingtaxis.co.uk](http://www.dorkingtaxis.co.uk)

- 4 / 6 / 8 Seaters
- Airport specialists
- Ferry ports & Eurostar
- Courier services available
- Home to School Transport service available
- Long distance journeys welcome
- All drivers & vehicles are fully vetted by MVDC & Surrey County Council
- Lady drivers available on request
- All major card payments accepted



A local award-winning business supporting people living in Epsom and Mole Valley enabling them to remain living independently AT HOME as well as providing companionship and colour to peoples lives.

**RATED AS OUTSTANDING BY CARE QUALITY COMMISSION**  
Committed to providing a quality trusted and consistent home care service we only recruit local CareGivers and match every CareGiver to every client so the same person will call each time.

**01372 741544**  
[simon.burrowes@homeinstead-epsom.co.uk](mailto:simon.burrowes@homeinstead-epsom.co.uk)  
[www.homeinstead.co.uk/epsom](http://www.homeinstead.co.uk/epsom)

John Wadsworth



CALL NOW FOR YOUR FREE VALUATION  
**01372 450500**

[www.johnwadsworth.co.uk](http://www.johnwadsworth.co.uk) [sales@johnwadsworth.co.uk](mailto:sales@johnwadsworth.co.uk)  
A professional efficient and friendly service







**RESIDENTIAL • COMMERCIAL  
AGRICULTURAL • SCHOOLS • ACOUSTIC  
HOARDING • GATES • SECURITY**

**RICHARDSON & BRADS FENCING LTD**  
**T: 01306 640 143 - 01483 414 745**  
 E: [INFO@RBFENCINGLTD.CO.UK](mailto:INFO@RBFENCINGLTD.CO.UK)  
 W: [WWW.RBFENCINGLTD.CO.UK](http://WWW.RBFENCINGLTD.CO.UK)  
 A: 168 SOUTH STREET, DORKING, SURREY, RH4 2ES  
 UNIT 45 MARTLANDS INDUSTRIAL ESTATE, SMARTS HEATH LANE, MAYFORD, GU22 0RQ

# J S Wilson

Mickleham

## Carpentry & Building Services



Extensions ~ Conversions  
 Refurbishments ~ Property Maintenance  
 Fully guaranteed ~ Fully insured  
*One call WILL solve it all*

Contact Jason on: 07761 926684 or 01372 379359  
[info@jasonswilson.co.uk](mailto:info@jasonswilson.co.uk)



# MEABY & Co

solicitors




**Strength & wisdom in law & business since 1848**

Meaby & Co Solicitors sits proudly in the heart of Dorking High Street providing expert legal advice to individuals and businesses throughout the town and its surrounding area. With additional offices throughout London, our experienced team, our 5\* Google reviews and award winning service will ensure that all of your legal needs are supported on your doorstep.

**Specialising in:**

Residential & Commercial Property	Fraud & Private Crime	Reputation Protection
Wills, Trusts & Probate	LGBT Experts	Commercial & Corporate Law
Litigation and Mediation	Employment Law	Media & Entertainment
Crisis Management	Family & Divorce Law	Lease Extensions

Drop by our offices at 159 High Street, Dorking RH4 1AD or contact our switchboard on 01306 884432.  
 Need advice elsewhere? We can assist. We have branch offices in Camberwell, Soho & Chigwell.

**Switchboard:** 01306 884432 [www.meaby.co.uk](http://www.meaby.co.uk)  @MeabyandCo  meaby-&-co  MeabyandCo  meabyandco

