

# MICKLEHAM PARISH Magazine

A community magazine for Mickleham and Westhumble



A.N. Colwell 1984

April 2022



## PROFESSIONAL CARPET & UPHOLSTERY CLEANING

- Local family running company
- Over 100's 5-star Reviews
- Award-Winning Customer Service
- Safe for Kids, Pets, and the Environment
- Effective against dirt & stains from drinks, food, makeup, pets & more

**SURREY  
MAIDS**

### REGULAR CLEANING

- Professional Equipment
- Trained Staff
- DBS Checked
- Flexible Hours

### DEEP CLEANING

- Moving out/in services
- Seasonal Cleaning
- Oven Cleaning
- Commercial Cleaning
- Tenancy
- Windows Cleaning
- Schools

**PATTY PLUS** 01306 866288  
SERVICES LTD OFFICE@PATTY.PLUS  
WWW.PATTY.PLUS

## Bullimores



Accountants for Life  
Tax • Accounts • Probate  
Inheritance Tax &  
Executorship

T: 01306 880880

E: partners@bullimores.co.uk

W: www.bullimores.co.uk

Bullimores LLP licensed to carry out the reserved legal activity of non-contentious probate in England & Wales by the ICAEW



## Stepping Stones

MORE THAN JUST A PUB

### GENERAL STORE

SERVING ESSENTIAL BASIC ITEMS

### CAFÉ-BAR

SERVING BREAKFAST

MORNING COFFEE

SANDWICHES & CAKES

AFTERNOON TEA & SCONES

### RESTAURANT & AL FRESCO DINING

SERVING FRESH CLASSIC PUB-STYLE FAVOURITES

SUPPORTING LOCAL PRODUCE AND SUPPLIERS

### TAKE-AWAY

10% DISCOUNT FOR MICKLEHAM MAGAZINE READERS

### LIVE MUSIC EVENTS

Last Monday night of the  
month from 7.30 pm

01306 889932

steppingstonespub@gmail.com

www.steppingstonesdorking.co.uk

Please check website for up-to-date menus,  
events and current opening times

## Sherlock Funeral Service

Sherlock Funeral Service is an  
Independent family owned business,  
established over 100 years

- Private Service Chapel & Rest Rooms
- Home visits arranged if required
- Pre-Paid Funeral Plans available
- Free Parking

Telephone: 01306 882266

Trellis House, 190 South Street, Dorking RH4 2ES.

Email: office@sherlockandsons.co.uk



Funeral Directors & Monumental Masons

# MICKLEHAM PARISH Magazine

April  
2022

## Mickleham Parish Magazine

A community magazine for  
Mickleham and Westhumble  
published under the auspices  
of Mickleham PCC with an  
independent editorial panel.

The magazine is published at  
the beginning of each month  
except January and August.

COPY DEADLINE  
MAY MAGAZINE  
Sunday  
10<sup>th</sup> April

send to:

Sue Tatham

St Anthony, Pilgrim's Way

Westhumble

Dorking RH5 6AW

01306 882547

editor@micklehammag.co.uk

Contributions in any form  
are welcome as are good  
quality photographs. There  
is no charge for advertising  
local charity and community  
events. However the editors  
reserve the right to shorten  
omit or reformat articles  
submitted for publication  
depending on space.



Printed by Holbrooks Printers  
Portsmouth

Mickleham Rectory

Dear friends

Easter is now almost upon us – eggs and bunnies are on the way. Easter offers us much more for it is a celebration of new life; Easter Sunday can fill us with new hope as we recall that Jesus rose from the dead and is alive. Death and sin have been defeated and we shout with joy the ancient Easter greeting *Halleluia! Jesus is risen! He is risen indeed!*

Last Easter we hoped that Covid would be defeated but the pandemic has continued to threaten our wellbeing and even our lives, restrictions have been lifted but for many the worry, suffering and impact of loss continue. Now we have a new threat to our security and peace as Russia has started a war in Ukraine with terrible suffering and loss. We are rightly concerned about and praying for Ukraine and for what might happen next. It is perhaps easier for us at present to identify with the sombre and sad mood of Good Friday. There we can find consolation in the fact that we have in Jesus a God who loves us, came among us and has experienced the extremes of emotional, spiritual and physical suffering. He understands and empathises with our pain and he is still with us by his Spirit and suffers alongside us and much, much more than us.

Easter Sunday offers us so much too. Jesus was raised to life again and so overcame death, sin and suffering. Because he is alive, we trust that we will have eternal life and just as Good Friday was followed by Easter Sunday so new life and hope can follow dark times. Sadness and despair can be turned into joy as we shift our gaze from the cross to the empty tomb.

I love Easter lilies. They are so beautiful and such a part of the Easter celebration in church and have been described as the white-robed apostles of hope. There are a few ideas about how the lily came to be associated with Easter.

The shape of the flower means it can be seen as a trumpet heralding the resurrection and the triumph of love in Christ. It can also be seen as a tear drop. There is a legend that, after Jesus' death and resurrection, white lilies were found growing in the Garden of Gethsemane, where Jesus prayed before his crucifixion. They were believed to have sprung up from the large drops of sweat from his brow which dropped to the ground when his head was bent in anguished prayer.

Lilies also remind us of resurrection story. The bulb is buried in the ground as a representation of Christ's tomb and up to three years later in late March or early April the glorious flowers appear proudly declaring they are alive, there is new life after death. It is also said that the delicate, white blooms represent purity, a reminder that Jesus has cleansed us from sin.

Whichever explanation you choose to link the lily with Easter, I hope that despite the sorrow we all feel at the state of the world, we can celebrate with hope the new life of Easter and be reminded of the ultimate defeat of sin and death along with the infinite love and mercy of God. Happy Easter!

*Sandra*

The Rev'd Dr Sandra Faccini, Parish Priest







## St Michael's Church Services

10 am Sunday Services  
available on Zoom

Joining information for both Zoom and telephone users is available in Pews News Online each week. If you would like to join us by Zoom then contact Alison Wood for the codes or to ask her to include you on the emailing list for Pews News: [admin@micklehamchurch.org.uk](mailto:admin@micklehamchurch.org.uk) / phone 01372 376443. We hope as many of you as possible will be able to join us for worship.

Please refer to Pews News Online for the latest information. If you missed any of the services, or would like to revisit them, all are available on the church YouTube channel:

<https://youtube.com/channel/UCl4pbewCT91iZhcd0EjBlw>



### First Saturday of the month Coffee Morning at Westhumble Chapel

Come along between  
10 am and noon  
for coffee and cake £1.  
Free drinks for children

Saturday 2<sup>nd</sup> April  
Everyone welcome

For further information call  
Jonathan Blake 07787 126966

## Easter Services

Tuesday 12<sup>th</sup> April

7.30 pm A short service of night prayer  
(Compline)

Maundy Thursday 14<sup>th</sup> April

7.30 pm Informal Holy Communion

Good Friday 15<sup>th</sup> April

2 pm Reflections at the foot of the cross

Easter Sunday 17<sup>th</sup> April

8 am Holy Communion (St Michael's)

10 am Family Holy Communion



## The final Lent Lunch

Host: Liz Absalom



Wednesday 6<sup>th</sup> April 12.30 pm

Mickleham Village Hall

Delicious soups and bread. No charge but donations  
will go to local charities

Annual Parochial Church Meeting  
Sunday 3<sup>rd</sup> April after 10 am service

## Men's and Women's Saturday Breakfasts at the Stepping Stones

9 – 10 AM

*A social gathering open to everyone*

### WOMEN'S BREAKFAST

3<sup>RD</sup> SATURDAYS

16<sup>TH</sup> APRIL

Book with: Stephanie Randall

0773 6933 482

[srandall55@gmail.com](mailto:srandall55@gmail.com)

### MEN'S BREAKFAST

4<sup>TH</sup> SATURDAYS

23<sup>RD</sup> APRIL

Book with: Andy Diamond

[diamo1@hotmail.co.uk](mailto:diamo1@hotmail.co.uk)



Bible Study Groups will reconvene in  
May after the Easter break. Details in  
the next magazine

## St Michael's Church Community Group

Churchyard News....

Our Very Own

Mickleham Vintage

As many will know, the new churchyard has two areas: the northern is free of archaeological restrictions and burials can take place. The trial trenching in 2017 confirmed however, greater archaeological potential on the southern half, which means that we would have to have an archaeologist present during each individual grave excavation. Clearly impractical and costly. Over the last few years, various options have been considered for this 'non-burial' area: a church Christmas tree plantation, a

wind turbine, memorial tree planting, a solar panel field, etc. Re-wilding was tried for a year but its rank appearance drew complaints both from those with relatives buried there and from our congregation and community. It is fair to say that there have been very different individual views expressed!

After some discussion with Denbies, it has been decided that a new area of vineyard will be planted, subject to planning permission. Managed by Denbies, but producing our own batches of Mickleham wine, the first bottle of Chateau Faccini should be ready in 2024. It should be a cheeky little, fruity red with undertones of shallot, because there should be suchalot of it.

Avrile Foulé



## Anyone for skittles?

For many it may well have been the first REAL social gathering for some time. Speaking for myself I felt as if I had recovered from flu and was embarking on that 'test the water syndrome' questioning 'do I feel okay to attempt a night out?' For those who have not constantly been reminded, over the last two years, that they are vulnerable or elderly might find this a bit hard to grasp. I would not have believed it myself pre-pandemic.

It's thanks to Mark (Day) and members of the Church & Community Group who masterminded the evening. It was just what we all needed.

A dozen teams gathered for the warm up. Team names included The Holy Rollers (not Rev'd Sandra in curlers), Five Tenors, Alley Cats and the Flintstones (Mary and Eric?), to name a few. It was clear right from the onset

this was going to be very competitive evening.

Scoring was dubious, but nobody cared! Appropriately timed, Debbie Lidbetter and Sue Carr brought out platefuls of hot dogs, and barman Andy made sure nobody went without fluid refreshment.

Interval over and individuals competed against each other. This was a slow process of elimination, until larger-than-life village personalities competed for the final cash prize. Some interesting modes of play: Jim Evans fighting for the lead, adopted an interesting 'bouncing bomb' strike, Katie Cox did not stand a chance! All in good fun and thank you Jim for donating your winnings to charity.

And the winning team? It had to be The Holy Rollers; do you reckon they had some additional help from on high?

Jenny Hudlass

Photographs on page 21.

Sausages and Skittles

The Skittles and Sausages evening was billed a cheap and cheerful, non-profit-making village event. It was fully booked with 70 people attending. And, even with the complementary sausages, a profit was made, with a donation to St Michael's, and £150 to 'Combat Stress', which runs a residential treatment unit in Leatherhead for military personnel suffering from psychological trauma. Everyone from the Community Group played a part in this event in some way, and Annie Dennis provided valuable scoring assistance. Thanks to ALL involved.

See Jenny Hudlass's account of the evening below.

## Church IT and sound

St Michael's church are looking for some more volunteers to join the team and help out with IT/visual aids/sound, on a rota basis. This includes recording of YouTube video's for family services, creation of the services using PowerPoint, editing recordings for YouTube and the church website, all which can be done from home. It will also include running Zoom at church services and operating the sound in church, which will be on a Sunday. You will be using some or all of the following: PowerPoint, OBS, Zoom, YouTube Studio, Video Editor and the church's lighting and sound systems. If you have the skills already or would like to learn, then please contact Sarah Blake on [sarahjbl@outlook.com](mailto:sarahjbl@outlook.com). You will be making a major contribution to the church and community, thank you.

**Please support our  
Food Bank  
collection  
see page 26**



Superb professional  
cleaning of carpets  
oriental rugs  
upholstery curtains  
and leather  
Guardsman  
anti-stain protection

- spot stain and odour removal
- leather cleaning specialists
- flame retarding
- dust mite reduction service
- all work fully insured & guaranteed

For a free no obligation quotation call today  
Freephone 0808 144 9071  
John Joannides 28 Bracken Close Bookham

**Safeclean**  
*The furnishing care specialists from GUARDSMAN*



*Pinehurst  
Rest Home*

*We aim to provide an excellent service at  
competitive rates supporting emotional physical  
and social needs of our clients always respecting  
and protecting their status as adults.*

- Residential and 24-hour daycare
- Excellent cuisine
- Facilities for disabled: medic bath / lift
- Home doctor in attendance
- Single & sharing rooms
- Convalescent & short stays
- Lounge with TV & piano
- Separate dining room
- Physiotherapist chiropodist & hairdresser
- Entertainment: theatre visits / parties  
& cabarets held on premises

**National Trust Road Box Hill**  
**Mickleham Dorking Surrey RH5 6BY**  
Telephone: 01306 889942 / 888253

*Dorking  
Decorators*  
PROFESSIONAL  
PAINTERS & DECORATORS

**Established Local Family Business**

- Over 20 years' experience
- Internal & External
- Commercial & Domestic
- Friendly, First Class Service
- Surrey / Sussex / Greater London

**FREE ESTIMATES**  
**01306 640418**  
**www.dorkingdecorators.co.uk**  
As approved by Checkatrade

**Mike Palmer**

**Electrical Services**

Part P registered electrician



From additional lighting and sockets  
to complete rewires

Fully insured Registered with the NICEIC

07866 930483 [mike@mikepalmer.biz](mailto:mike@mikepalmer.biz)

Boxhill Way, Strood Green, Betchworth RH3 7HY

**PRIVE**

LUXURY HAIR SALON

8 High Street, Leatherhead  
01372 360302

[www.privelondon.co.uk](http://www.privelondon.co.uk) i prive\_leatherhead



**SIMON HOOPER**

**For all your decorating needs...**

Professional friendly and speedy service at all times

Fully insured

Insurance work

Exterior painting

Interior decorating

Free quotes & advice

Oil & Water-based products

Commercial / Domestic work

Wallpaper hanging & removal

07947 135 376

0208 3978 962

[www.slhdecoratingservices.com](http://www.slhdecoratingservices.com)

Friday and Saturday Platinum  
Jubilee Celebrations at the

**Stepping Stones**

Westhumble

Friday 3<sup>rd</sup> June 3 - 5 pm

Afternoon Tea Party with Beacon Tart

Hat Competition - 4 pm

Acoustic Live music by Mood Swing

Saturday 4<sup>th</sup> June from 2 pm

Live Music Large Screen Broadcast

Children's fancy dress Outdoor BBQ

## Mickleham & Westhumble Jubilee Celebrations

St Michael's Church has combined forces with Mickleham Parish Council and Westhumble Residents Association to organise events for the Queen's Platinum Jubilee. There are several events taking place from Friday 3<sup>rd</sup> to Sunday 5<sup>th</sup> June 2022 and these are open to all residents in both Mickleham and Westhumble. As you can appreciate these events take a lot of organising and we are looking for your help: for volunteers to help over the weekend from road marshalling to clearing up afterwards and for any sponsorship towards costs. If you are willing to help in any way, please contact: [clerkatmpc@gmail.com](mailto:clerkatmpc@gmail.com)

### Jubilee Sunday

Events will be advertised as more activities and timings are confirmed. Our biggest event is the Sunday Lunch on 5<sup>th</sup> June. This will follow a 10 am parish service in St Michael's Church where all are welcome to celebrate the Queen's 70 years of dedicated service to our country.

Some details are yet to be confirmed. These will be included in the May parish magazine.

**PLEASE LET US KNOW  
IF YOU HOPE TO ATTEND**

To assist with our planning it would be extremely helpful to know how many people will be coming to lunch. Please email [clerkatmpc@gmail.com](mailto:clerkatmpc@gmail.com) giving names and the number of people in your party. Jubilee Steering Group





# Grand Golden Jubilee Street Party

Norbury Park Farm Sunday 2<sup>nd</sup> June 2002

Photographs: Ben Tatham



# Community Diamond Jubilee Tea Party

Box Hill School Tuesday 5<sup>th</sup> June 2012

Photographs: Andrew Tatham



Someone had made the wise decision to start the festivities in the McComish Hall so the pouring rain did not dampen the spirits of the large crowd celebrating the Queen's Diamond Jubilee. Here are just a few photographs which capture the mood of this very jolly party. Clockwise from top left: Brian and Judy Wilcox in the red, white and blue parade; some of the entries in the best crown competition – Paul Brown, Liz Harper, Bernie Bailey, Brian Wilcox and Richard Thomas; Mike Weller poses with our special guest; Paul and Jo Brown lead the red, white and blue parade; David Ireland supervises a marathon pass the parcel game; Jo Brown leads the parade of children wearing their crowns; winner of the children's best crown competition, Zoë Burton.



## Fully Experienced Carer/Companion

- PART-TIME LIVE-IN • DRIVING LICENCE HOLDER •
- HOURS to SUIT • BABY/CHILD SITTING •
- EXCELLENT REFERENCES • FULLY INSURED •

Reliable, Kind and Caring  
**07748 743 732**

High Quality, Professional Home Care and Companionship Enabling People in Mole Valley & Surrey to Remain Living Independently at Home



Your visiting  
**PHYSIOTHERAPIST**

**SUE JUDD** MCSP HCPC

40 years of experience.

All your requirements for elderly mobilisation & post-operative rehabilitation.

07834 227999 sue-judd@sky.com



Gill and Paula would like to warmly welcome you to Aspen Care offering assistance to enable you to live in the comfort of your own home with care and companionship.

- A happy alternative to a care home
- Cover while your family or carer takes a holiday
- Recuperation and rehabilitation following a hospital stay
- All aspects of personal care medication and meal prep
- Dementia care disability chronic & critical conditions end of life care
- Accompaniment to appointments

Call for a chat to discuss your requirements.

We look forward to hearing from you.

01737 354821 info@aspenliveincare.co.uk www.aspenliveincare.co.uk



## YOUR LOCAL FARM SHOP ON DENBIES WINE ESTATE

**farm shop deli plant centre**

**Open daily 9.30 to 5.30 and Sundays 10 to 5 Free parking**

**FOOD FAIR: SUNDAY 24<sup>th</sup> APRIL 12 noon – 4 pm A treat for foodies!**

**Lots of local producers and tasters. Free entry**

We deliver veg bags and more to the local area on Tuesdays and Fridays  
see [www.vgfarmshop.com](http://www.vgfarmshop.com) or email [vegbag@vgfarmshop.com](mailto:vegbag@vgfarmshop.com) for details

**LOCAL • NATURAL • ETHICAL 01306 880720 www.vgfarmshop.com**



## YOUR LOCAL PROFESSIONAL TREE HEALTH CARE SPECIALISTS

Felling, Pruning, Stump Removal, Planting, Logs,  
Woodchip, Air Spade Services, Consultancy

Call us on **01306 741800**  
[office@treeline.co.uk](mailto:office@treeline.co.uk) • [www.treeline.co.uk](http://www.treeline.co.uk)

## EDE BROS

• REMOVALS • STORAGE • SHIPPING •

- Since 1926, Capel-based and family owned
- STRESS-FREE, local, national & worldwide
- Contact us for your **FREE** estimate...

**01306 711293**  
[edebros.co.uk](http://edebros.co.uk)

**EDE BROS**

REMOVALS • STORAGE • SHIPPING  
Dorking, Surrey, England  
01306 711293  
[www.edebros.co.uk](http://www.edebros.co.uk)

**EDE BROS**

REMOVALS • STORAGE • SHIPPING  
Dorking, Surrey, England  
01306 711293  
[www.edebros.co.uk](http://www.edebros.co.uk)

**EDE BROS**

REMOVALS • STORAGE • SHIPPING  
Dorking, Surrey, England  
01306 711293  
[www.edebros.co.uk](http://www.edebros.co.uk)

## P J Oliver & Son

Window cleaning  
House & Garden Maintenance  
Roof Repairs, Guttering  
Painting & Decorating  
Ground works, fencing, hedge cutting,  
and tree work

Also Pest control

Call Phil on 07722 158111

Email [Oliviagarrett79@gmail.com](mailto:Oliviagarrett79@gmail.com)

Mickleham & Westhumble Local History Group

## Mickleham School

### The War Years 1939-1946 from the School Log

It just happened that when I reached the year 1939 in my reading of the School Logs that the Russian invasion of Ukraine began. The job of the head, William Curtis Johnson, is merely to record events in the life of the school so he does not look at the wider scene nor seek to engage our sympathies. Nevertheless we are more than capable of filling in these for ourselves.

The Second World War was declared on 3<sup>rd</sup> September and on the 11<sup>th</sup> the autumn term began. William Johnson writes that they opened 'under emergency conditions'. The surprise was that children from three London schools plus evacuees were also expected to be accommodated, 220 in all. Arrangements were hastily made to organise Mickleham school sessions from 9 am-12 pm, while Dulwich Central School had the 1-4 pm session. London County Council would provide one extra teacher. Grove Vale School and Dog Kennel Hill School were to use the village hall on a double shift. It was decided that the afternoons were to be given over to walks and games in three groups, activities that were highly weather dependent, so often abandoned, as the winter of 1940 was severe with deep snow and hard frosts. Charabancs often could not cope with the journey from Box Hill and overall attendance might be halved. In addition, scarlet fever and measles were taking their toll.

In May 1940 the decision was made to amalgamate and classes were reorganised to incorporate 24 children from the three London schools that had been evacuated. I assume the rest had returned home, but preparations for invasion continued. An air raid drill was held on 31<sup>st</sup> May when the school closed and all the children were out and under cover of the woods in four and a half minutes. Gas mask drills followed. Air raid warnings are reported for the first time in July and are taking place in earnest in August and September, some short-lived but often more than twice in one day. Some were much longer and children were held in school past normal school hours. Night air raids, not unsurprisingly, were common, using the

geography of the Mole Gap as a direct route to London. Attendance fell as parents kept their offspring at home to catch up on their sleep. Autumn that year was particularly bad with constant raids lasting up to seven hours and continuous raids all day; 'very close to here today', and on the 9<sup>th</sup> November gunfire was heard. The bombardment was so constant on some days that children were held in school until 4.30 pm and taken home in parties. In spite of this, an end of term Christmas party was held with sweets, an orange and a present for each, the infants enjoying wearing fancy dress.

1941 saw wintry weather with heavy snow in February. Often the charabanc from Box Hill failed to arrive and might be replaced by a lorry, which was not popular. On several occasions children chose to walk. The W.I. organised the showing of a Ministry of Information film at the village hall. In July there were 130 children on roll, 52 from Box Hill, and measles was prevalent. No raids are mentioned but gas mask drill was taking place. The winter of 1942 was even more severe with heavy snow and freezing temperatures in January and well into February. Classes were too disrupted by absence to be held according to the timetable, only 29 being present on the 23<sup>rd</sup> January and no attendance from St Faith's or Box Hill. On 9<sup>th</sup> February, with 91 children attending, there was no fuel, nor on the next day, but a 'lorry did finally arrive at 6.30 and damaged the playground in the process'. Summer saw the School and District sports take place as normal and in the holidays the school was kept open for milk and for those whose parents wished for them to attend although few took up the offer of school, and only a dozen for milk.

The start of the new term in September saw four girls moving on to Leatherhead Central School and three boys leaving to take up scholarships. The school attended St. Michael's for a National Service of Prayer and the canteen opened in the village hall for the first time, serving 59 dinners. Until then, only children who went home would have had a hot meal. Towards the end

of the year there was a resumption of air raid alerts, gunfire was heard and a very low-flying aircraft flew overhead. 1943 saw fewer air raid warnings but a talk by the ARP on bombs where the children were shown specimens and warned not to approach. £7 was saved for 'Wings for Victory' by the children and school attendance was much improved. The 1944 log records the collection of 1500 books and magazines for salvage and donations to the Red Cross Fund. On June 15<sup>th</sup> an air raid warning sounded at 11.40 pm and the alert was not cleared until 11.15 am the next day. On 18<sup>th</sup> June, a pilotless plane fell in Norbury Park but there was no damage to the school except for 'very little glass left'. Luckily, it was a Sunday. The following two weeks were very active, with repeated warnings during the day and very noisy nights, culminating in a flying bomb going directly over the school and landing in Leatherhead. July saw further alerts with flying bombs frequently passing over night and day; one burst over Foxbury but only broke two windows. The school did not open until mid-August (earlier than we do today but to coincide with harvest). There was damage to the school during the holidays and there was some further movement of evacuees, returning both inwards and outwards.

1945 was another severe winter with drifts on Box Hill but by this time the action had moved to Europe, and on 8<sup>th</sup> May VE Day was declared VE Day and on November 22<sup>nd</sup> the school was closed for VJ Day.

Just to mop up odds and ends, in January 1946 the Kinsmen Club of Canada gave chocolate flavoured milk powder, 1lb to be distributed to each child and some to the canteen for puddings! Not until 1947 did the school have a telephone installed and it was 1948 before PC Saunders gave his talk on finding dangerous explosives.

That is the last entry in the log but this is just one tiny part of both a local and global story. We did not see these scenes on television but I think perhaps we understand more now of the suffering then. Judy Kinloch





## Dog Walkers Can Help Farmers

As residents we are aware of how lucky we are to live in such wonderful countryside – an area of outstanding natural beauty (ANOB) – which has been fashioned largely because of farming. Countryside access has been a welcome reprieve for many over the past two years. However, the huge increase in visitors has had a significant knock-on effect for local farmers.

What many people do not realise is that a field in the countryside is not just an area of grass – parkland – but a crop. It is easier to see a field as a 'working' area when sheep or cattle are grazing, less so when the field is empty. While in urban and public access areas such as parks, most dog owners are aware of their social responsibility to protect children and other members of the public by collecting their dog's poo – there is also a fine for not doing so. However, many do not see the need in open countryside – after all, nobody clears up after cattle, sheep or horses, do they?

*Neospora caninum* affects cattle, sheep and horses and is one of the biggest causes of abortions and stillbirths in cattle. There is currently no vaccine or any licensed drug for bovine neosporosis: prevention is key. Dogs are the definitive host for *Neospora caninum* and the parasite is transmitted

into the environment through their poo. Even if a dog is healthy and up-to-date with vaccinations, it can still carry *Neospora caninum* without its owners knowing. Alarmingly *Neospora Caninum* can survive outdoors in the soil and water for many months, long after the dog poo has decomposed. If a cow comes into contact with the contaminated grass either through grazing or when the grass is harvested for silage or hay, it will infect that cow for life. Furthermore, there is an extremely high risk that when the infected cow becomes pregnant, she will abort the calf or it will be born with neurological problems. A farmer raising cattle for either the meat or dairy industry relies on a breeding herd, but once *Neospora caninum* is in the herd it is very difficult to eliminate. Animals are a farmer's livelihood, but *Neospora caninum* causes an exponential downward spiral in the farmer's asset by drastically reducing not only the number of calves born, but the need to cull the infected cow.

There has been a huge upsurge in dog ownership since the first lockdown in 2020 and the government and local councils are also encouraging greater accessibility to the countryside. The government has recently launched a new and refreshed Countryside Code (CC) to help people enjoy the countryside in a safe and respectful way. Clearer rules have been introduced to underline the importance of clearing

away dog poo as well as staying on footpaths. Local farmers who have public access across their fields are particularly struggling with dog walkers and walkers. Local farmer, Mark Frost, at Norbury Park Farm speaks about the devastating effects in the following YouTube video: Devastating impact on our countryside available at [tinyurl.com/22mdc458](https://www.youtube.com/watch?v=tinyurl.com/22mdc458)

The CC states that walkers, including their dogs, should stay on marked footpaths, even if they are muddy, to protect crops and wildlife and dog walkers must take their dog poo home and use their own bin if there are no public waste bins. There are some effective dog poo-bag pouches available that can be clipped to a belt or rucksack (The Dicky Bag @ Hills & Hound). We, as local dog walkers, have a unique opportunity to demonstrate to visiting dog walkers their responsibility whilst crossing farmland.

Farmers work so hard throughout the year to produce local food and care for this wonderful landscape, and it would be so sad not to see livestock in our surrounding fields or be denied access through them. Let's show our appreciation by keeping to footpaths, keeping dogs on leads around livestock and picking up our dog's poo which can be especially devastating to cattle. Bag it, take it, bin it.

The updated Countryside Code 2021: <https://www.gov.uk/government/publications/the-countryside-code>  
Mandy Jillings



Storm Eunice on 18<sup>th</sup> February caused powercuts and cancelled meetings. Numerous trees lost branches or were blown down. One of the victims was the village hall car park fence shown here before and after it was skilfully repaired by David Kennington and Tony Butler.

## Just Bring Yourself

On 15<sup>th</sup> February Mickleham welcomed a group of primary school children to participate on a walk in the nocturnal woods. Funding by a generous local donor was provided to Just Bring Yourself CIC to conduct the event. Undeterred by very wet conditions the children took off in the dark into Mickleham Woods with guides and teaching staff. While they were busy learning about woodland clues and enjoying the stunning architectural tree formations, the village hall was being transformed into the 'Moon Café.' It continued the night time theme and included a soundscape of the English woodland. Returning from their walk, the children hurriedly informed us that they had not been afraid because they had 'special torches.'



The teaching staff who drove them home wrote to tell us the children were 'buzzing' all the way home and the Headteacher wrote to thank us 'for the wonderful opportunity our children had to participate in this exciting walk. They thoroughly enjoyed it and I am so pleased that they got so much out of it.'

Allowing children to experience the countryside is something most of us take for granted. Being outdoors running, investigating and being connected with nature is so important for good physical and mental well-being. Sadly, not all children will have this opportunity. If you would like to donate or help with our events, please get in touch – email us at [hello@justbringyourself.co.uk](mailto:hello@justbringyourself.co.uk)

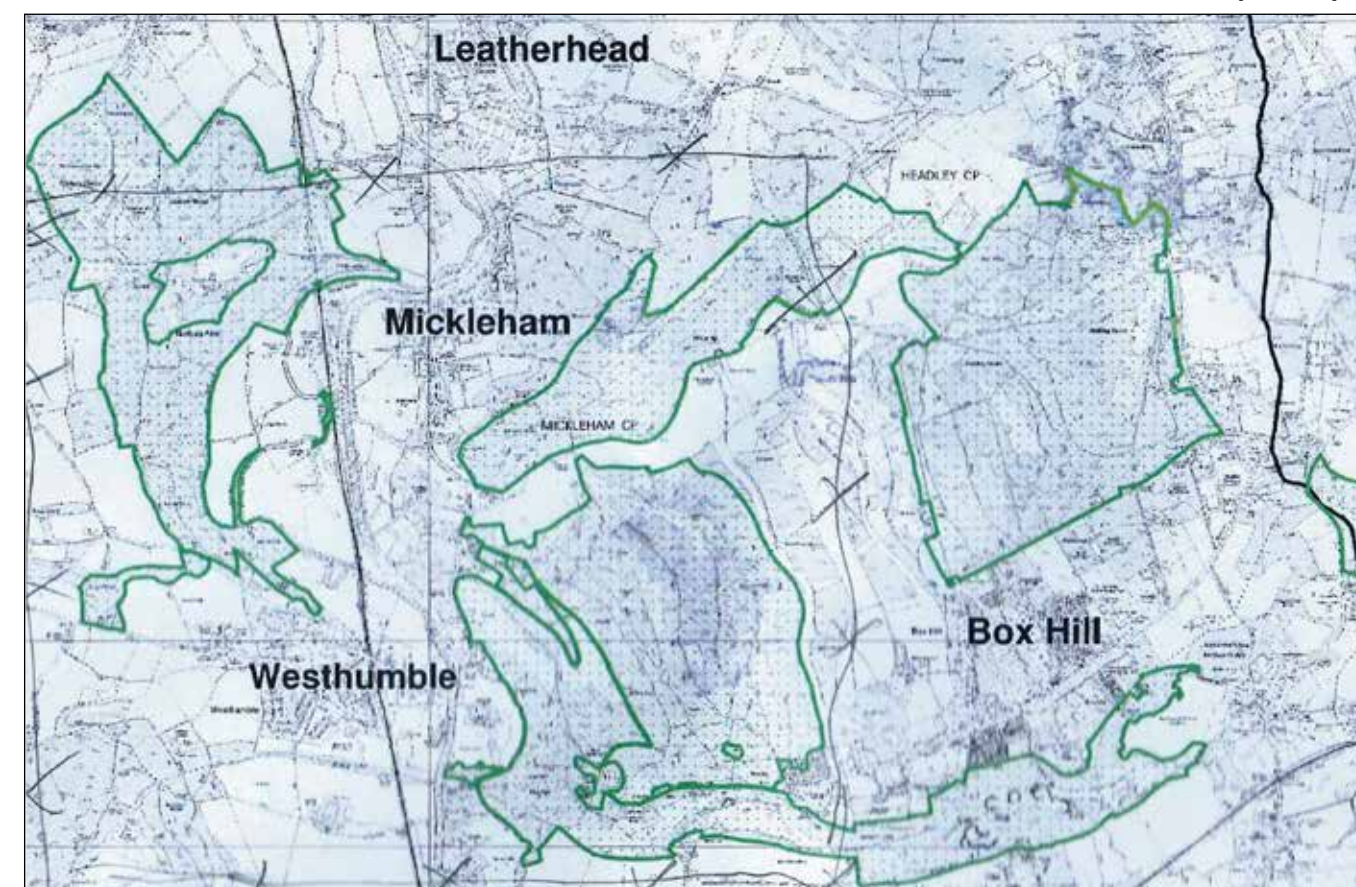
Next up – we look forward to meeting 90 children from another primary school at the end of March in Norbury



Park. An exciting day that will provide the children with nuggets of fun information about cow pats, rivers, woodland plants and farm animals (with more poo!) led by three wonderful guides from Just Bring Yourself and features local farmer Nick Bullen. If you see us out, do say hello.

Kirsten and Francesca

## Our local areas of Special Site of Scientific Interest' (SSSI)



Large parts of Norbury Park, Mickleham Downs and Box Hill are part of the 'Mole Gap to Reigate Escarpment Special Site of Scientific Interest' (SSSI) and Special Area of Conservation (SAC). This important site covers much of Norbury Park, Mickleham Downs and Box Hill as shown on the map. It is important that in this area people keep to authorised footpaths and bridleways and do not make new tracks. If people wish to know more about the SSSI, you can look it up online using the official title in the first sentence above.



## A Confidential & Safe Space to Talk

Counselling • Mind & Body Healing  
Reiki • Relax into Nature Sessions  
Face to face/Online/Outdoors/Distance

Supporting you with compassion and understanding through challenging times



Call Judith Cobby  
on 01306 882229  
or 07790 614448

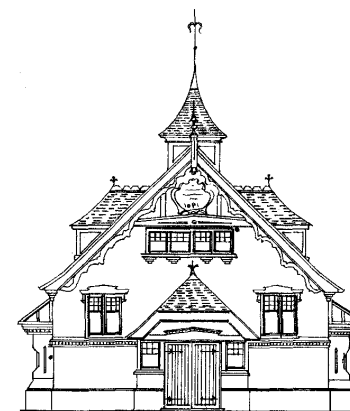
[www.healing-inspiration.co.uk](http://www.healing-inspiration.co.uk)

## TIM LANGLEY

*Experienced craftsman*

ANTIQUE RESTORATION  
CABINET MAKING  
FRENCH POLISHING

Free estimates collection & delivery  
01372 457700 07960 486455



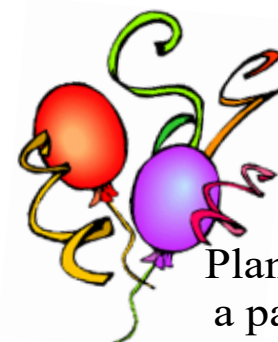
## Mickleham Village Hall available for hire

Hall bookings  
Table & chair hire

Deanna Darnell

07790 941 601

[bookings@micklehamvh.co.uk](mailto:bookings@micklehamvh.co.uk)  
[www.micklehamvillagehall.org.uk](http://www.micklehamvillagehall.org.uk)



Planning a party?

Equipment available for hire

China ~ Cutlery

Electric urn

Equipment hire  
Mary Banfield

01372 373912

[admin@micklehamvh.co.uk](mailto:admin@micklehamvh.co.uk)

## Community Directory

BOX HILL AND HEADLEY HEATH (National Trust)

Lead Ranger – Mark Dawson

01306 885502

[mark.dawson@nationaltrust.org.uk](mailto:mark.dawson@nationaltrust.org.uk)

Friends of Box Hill – Chair Lyn Richards

01737 842889

[lyn@mra.uk.net](mailto:lyn@mra.uk.net)

BOX HILL SCHOOL

Headmaster – Cory Lowde

01372 374814

[HMPA@boxhillschool.com](mailto:HMPA@boxhillschool.com)

DORKING CRICKET CLUB

Chairman – Andrew Homewood

[homewooda@hotmail.co.uk](mailto:homewooda@hotmail.co.uk)

DORKING GROUP OF ARTISTS

Exhibition Secretary – Patricia Booth

01737 24491

[patriciabooth100@gmail.com](mailto:patriciabooth100@gmail.com)

DORKING LAWN TENNIS & SQUASH CLUB

Jim Cattermole

01306 883629

[jim.cattermole@uwclub.net](mailto:jim.cattermole@uwclub.net)

DORKING RUGBY CLUB

Jim Evans

07789 176417

[jim@flintcottage.net](mailto:jim@flintcottage.net)

THE GARDEN SHED

Pauline Davis

07759 646353

[paulinemdavis@gmail.com](mailto:paulinemdavis@gmail.com)

Susie Gowenlock

07768 923088

[susiegowenlock@gmail.com](mailto:susiegowenlock@gmail.com)

JUNIPER HALL FIELD CENTRE

01306 734501

[enquiries.jh@field-studies-council.org](mailto:enquiries.jh@field-studies-council.org)

Head of Centre – Maddy Jones

[m.jones@field-studies-council.org](mailto:m.jones@field-studies-council.org)

Friends of Juniper Hall – Suzy Hughes

01483 281935

[suzy@suzyhughes.co.uk](mailto:suzy@suzyhughes.co.uk)

MICKLEHAM CHILDREN'S PLAYGROUND ASSOCIATION

Secretary – Sarah Parfitt

07767 891772

[sarah@sarahparfitt.com](mailto:sarah@sarahparfitt.com)

MICKLEHAM CHORAL SOCIETY

THURSDAYS 8 - 10 pm – MICKLEHAM VILLAGE HALL

01372 373106

Conductor – Juliet Hornby

01306 883932

Secretary – Anne Weaver

[www.micklehamchoral.org.uk](http://www.micklehamchoral.org.uk)

[secretary@micklehamchoral.org.uk](mailto:secretary@micklehamchoral.org.uk)

MICKLEHAM OLD BOX HILLIANS FOOTBALL CLUB

Secretary – John Atewell

01372 374745

MICKLEHAM PARISH COUNCIL

SEE WEBSITE FOR MEETING DATES

[www.micklehampc.org.uk](http://www.micklehampc.org.uk)

Chairman – Rev'd David Ireland

01372 379381

[rev.ireland43@btinternet.com](mailto:rev.ireland43@btinternet.com)

Parish Clerk – Feena Graham

[clerkatmpc@gmail.com](mailto:clerkatmpc@gmail.com)

MICKLEHAM PARISH MAGAZINE

Editor – Sue Tatham

01306 882547

[editor@micklehammag.co.uk](mailto:editor@micklehammag.co.uk)

Co-Editor – Charlotte Daruwalla

01306 884025

[editor@micklehammag.co.uk](mailto:editor@micklehammag.co.uk)

Administrator – Vacant

MICKLEHAM VILLAGE HALL

Chairman – Ben Tatham

01306 882547

[chairman@micklehamvh.co.uk](mailto:chairman@micklehamvh.co.uk)

Bookings Manager – Deanna Darnell

07790 941601

[bookings@micklehamvh.co.uk](mailto:bookings@micklehamvh.co.uk)

## Ballroom Dancing Latin American Dancing Professional Training [IDTA]

Private lessons on  
Tuesday afternoons and  
Sunday evenings

At Mickleham Village Hall  
Dell Close Mickleham Surrey RH5 6EE  
07748 867 732  
[vmvdancing@gmail.com](mailto:vmvdancing@gmail.com)



IDTA Qualified Teacher

## Rowlatt Garden Services

# RGS

EST.1985

*Gardens large and small  
we maintain them all*

All aspects of private and commercial garden  
and estate maintenance landscaping undertaken  
Fencing grass & hedge cutting

Telephone: 01737 841524 Mobile: 07887 838666  
References available upon request



Joseph

## De Decorators

• Painting • Decorating • Wallpapering •  
Plastering • Tiling

Mickleham based 40 years' experience  
01372 372331 07973 358 932



Regular Lawn Mowing  
Lawn Care & turfing  
Pressure Washing  
Hedge Trimming

General Garden Maintenance

[phil@philsmowingdorking.co.uk](mailto:phil@philsmowingdorking.co.uk)  
07905 160765



## KING WILLIAM IV

Dear neighbours & friends

I am very sad to report the end of an era. Tony Smith has decided it is time to retire; his last shift being Mothers Day. I recruited Tony some nine years ago just a few months after we bought the King Willy. Tony has been by my side through thick and thin for all that time and we have shared the same highs and lows. He has been instrumental in the success here at the King William and is a very popular staff member. Customers and staff alike will miss his good humour and banter. We are having some drinks after his last shift to see him on his way. Tony is going to take a part-time job in his local community club, but has offered to help us out on the occasional Sunday if need-be, so if you were unable to say cheerio, there will be future occasions to do so. Thanks Tony you will be missed. All the best Eamonn & Anne

Byttom Hill Mickleham 01372 372590 [www.thekingwilliamiv.com](http://www.thekingwilliamiv.com)







# Community Directory

Continued from page 13

## MICKLEHAM & WESTHUMBLE BADMINTON CLUB

Membership Secretary Sarah Blake tinkerbell0044@hotmail.com

## MICKLEHAM CRICKET CLUB

Membership contact Will Dennis 07903 842674  
will@micklehamhallfarm.co.uk

## MICKLEHAM & WESTHUMBLE HORTICULTURAL SOCIETY

Chairman – David Kennington 01372 362309  
www.surreycommunity.info/mwhs davidkennington144@gmail.com

## MICKLEHAM AND WESTHUMBLE LOCAL HISTORY GROUP

Chairman – Ben Tatham 01306 882547  
ben@thetatham.co.uk  
www.micklehamwesthumblehistory.co.uk/community/mickleham-  
westhumble-local-history-group-13483/home/

## MOLE VALLEY DISTRICT COUNCIL

Councillor Elsie Rosam 01306 885001  
01306 885695  
elsierosam29@gmail.com

## THE ARTS SOCIETIES (FORMERLY NADFAS)

Betchworth – Mary Venning 01306 883301  
Dorking – Sue Tatham 01306 882547  
Leatherhead – Sarah Sheridan 01306 883699

ST MICHAEL'S CHURCH OF ENGLAND (A) INFANT SCHOOL 01372 373717  
info@stmichaels-dorking.surrey.sch.uk

Friends of St Michael's School – Chair Amy Riele  
friendsofstmichaels2017@gmail.com

## ST MICHAEL'S COMMUNITY NURSERY

WEEKDAY MORNINGS – MICKLEHAM VILLAGE HALL  
Supervisor – Hilary Budd 01372 361021  
stmichaelsnursery@btinternet.com

## SURREY COUNTY COUNCIL

Councillor – Hazel Watson 03456 009 009  
01306 880120  
hva.watson@btinternet.com

## SURREY WILDLIFE TRUST

01483 795440  
info@surreywt.org.uk

## WESTHUMBLE RESIDENTS ASSOCIATION

David Allbeury 07860 227451  
westhumble.neighbourhood.watch@gmail.com

## WESTHUMBLE NEIGHBOURHOOD WATCH

Lead Co-ordinator – David Allbeury 07860 227451  
westhumble.neighbourhood.watch@gmail.com

## ADDITIONAL CONTACT INFORMATION

### CITIZENS ADVICE

Dorking – Lyons Court 01306 732302  
Leatherhead – Swan Mews High Street 01306 732301

### CRIMESTOPPERS

0800 555 111

### POLICE Non-emergencies

101  
(often quicker to make online report) <https://report.police.uk/>

Neighbourhood Specialist Team – Dorking Rural East

General enquiries molevalley@surrey.pnn.police.uk

NHS Urgent and emergency care 111

# Babysitting by local youngsters

Those listed below are at least  
14 years old.

Gracie Owen \*\*07790 900649  
Annabelle Prosser\*

07443 634179

Maisy Presley\* 07720 657327

Martha Pearce 07514 080005

Rory Lee \*\* 07973 360 950

Ellie Kim 07773 395 575

Chelsea Edwards 07834 695816

Edward Moran 07740 088124

\* Holidays only  
\*\* Parent's mobile number

If you would like to add your  
name to this list please get in  
touch with Sue Tatham

01306 882547  
editor@micklehammag.co.uk

No Charge

# Advertising in the Parish Magazine

Please contact

Sue Tatham (as above)

Small ads: a nominal fee is  
charged for ads where items or  
services are bought or sold.

We have been advised to print  
the following reminder:

*We cannot guarantee the  
quality of the goods and  
services offered by our  
advertisers.*



# All good things must come to an end ...

After much soul searching, I  
have decided to retire from the  
magazine at the end of the year. It has  
been a big part of my life for the last 38  
years and it will be a big wrench. But  
time moves on and I thought it only fair  
to give sufficient notice so that there  
can be a smooth hand over. However,  
none of the existing editorial team is  
willing to take on the sole editorship.  
Perhaps it is time to think about a

different format. Whatever happens  
my great hope is that it will continue  
as a community magazine. Throughout  
the years one of my aims has been to  
make a record of the social history  
of our parish. With much of today's  
communication disappearing into the  
ether and the dearth of local news in  
our newspapers such records will be  
vital sources for future historians.

Sue Tatham

# Village Signs



As part of the preparations for the  
Queen's Platinum Jubilee, it has  
been suggested that the Millennium  
signs at the boundaries of Mickleham  
and Westhumble should be given a  
spring make over. An initial survey has  
identified that some of the wood frames  
are rotten and on the Mickleham signs,  
the letters are coming loose. In addition,  
all the metal work needs a rub down  
and repaint. The outline plan is to lift

the tops off and take them away for  
renovation. This first part is in hand, but  
I am now seeking volunteers to help to  
carry out the refurbishment activities.  
The current working assumption is that  
it should be relatively straight forward,  
but I would welcome input from anyone  
with relevant expertise.

If you would like to help, please  
contact me [jim@flintcottage.net](mailto:jim@flintcottage.net) or  
07789176417 Jim Evans

# Community News

Congratulations to Tracy and David  
Kennington of Headley Lane on  
the birth of a second grandson: Felix  
Thomas Kennington Billington. Born on  
4<sup>th</sup> March (six weeks early) to daughter  
Clare and Pete Billington who was on  
tour in the USA at the time. A brother  
for Henry. Felix now home safe and  
sound after a week in a Special Care  
Baby Unit.

Welcome to:

• Francesca and Leon Douch who  
with Lili (11), Charlie (8) and Ophelia  
(18 months) are moving to Old London  
Road from Bookham

• Leanne and Oliver Dodd and son  
Isaac (5) who have moved to Dell Close  
from Dorking

• Phil and Stella Ellams who have  
moved to School Lane from Walton-  
on-the-Hill.

Please let us know if you have any  
community news eg a new baby, if you  
have just moved to the area, or are about  
to leave. [editor@micklehammag.co.uk](mailto:editor@micklehammag.co.uk)  
is the contact.



# A Prayer for Ukraine

God of peace and justice, we pray for  
the people of Ukraine today.

We pray for peace and the laying  
down of weapons.

We pray for all those who fear for  
tomorrow, that your Spirit of comfort  
would draw near to them.

We pray for those with power  
over war or peace, for wisdom,  
discernment and compassion to guide  
their decisions.

Above all, we pray for all your  
precious children, at risk and in fear,  
that you would hold and protect  
them.

We pray in the name of Jesus, the  
Prince of Peace. Amen

Archbishop Justin Welby  
Archbishop Stephen Cottrell

MARTINEAU MUSICIANS  
CONDUCTED BY JULIET HORNBY  
PRESENT

# REFLECTIONS: MUSIC FOR EASTERTIDE

SATURDAY 23 APRIL AT 7.30PM  
ST PAUL'S CHURCH, DORKING, RH4 2HT  
A VARIED CONCERT OF REFLECTIVE MUSIC FOR THE EASTER

TICKETS £12 IN ADVANCE OR £15 ON THE DOOR  
AVAILABLE FROM STEPHEN WILLIAMS 07916 140612  
[STEPHENACWILLIAMS@GMAIL.COM](mailto:STEPHENACWILLIAMS@GMAIL.COM)





## Memorial Easter Lilies

As in past years the main floral arrangement in church on Easter Sunday will be lilies given in memory of someone dear. Their name will be read out during the service. If you would like to dedicate a lily this Easter and arrange a donation, please contact Sarah Blake [SarahJB1@outlook.com](mailto:SarahJB1@outlook.com)



Can you translate this diagram into words? Say what you see.

**LAW on**

Answer on page 26

## What is your carbon footprint?

The theme of this year's Lent course is 'Caring for Creation'. In one of the sessions we looked at global warming and climate change. One of the things

which came to light was that carbon footprint calculators are available online. [www.footprint.wwf.org.uk](http://www.footprint.wwf.org.uk) has a simple questionnaire to start you off.

Brockham Choral, celebrating their 70th anniversary, present J S BACH'S

## ST MATTHEW PASSION

Saturday 21<sup>st</sup> May 7 pm

St Martin's Church, Dorking,  
with the Covent Garden Sinfonia, the Reid Consort  
and the Surrey Youth Choir

Tickets: Adults £16 in advance, £18 on the door

Students under 25 in full-time education £10

Available by email : [brockhamstickets@gmail.com](mailto:brockhamstickets@gmail.com)

Further information & tickets [www.brockhamchoral.org](http://www.brockhamchoral.org)

Mickleham & Westhumble Horticultural Society's

## Summer Show

Saturday 9<sup>th</sup> July

Schedules will be delivered with  
next month's MPM

With lots of time to prepare let's make  
this a bumper year!



LEITH HILL  
MUSIC  
FESTIVAL

DORKING  
HALLS  
2022

**Friday 8th April  
at 7.30pm**

Mass in C by Beethoven  
The Song of Mary by Jonathan Willcocks  
Let all the world in every corner sing  
by Vaughan Williams

**Saturday 9th April  
at 7.30pm**

The Old Hundredth by Vaughan Williams  
A Little Jazz Mass by Bob Chilcott  
Porgy and Bess Suite by Gershwin  
Feel the Spirit by John Rutter

Tickets from £17 Dorking Halls Box Office  
[www.dorkinghalls.co.uk](http://www.dorkinghalls.co.uk) 01306 881717

LHMF founded 1905 [www.lhmf.org.uk](http://www.lhmf.org.uk) Registered charity 275176

Mickleham and Westhumble  
Horticultural Society

## AGM and Plant Sale

Saturday 23<sup>rd</sup> April 10.30 am

Ashleigh Grange (off Chapel Lane)

There will be teas/coffees and cakes to go with an interesting selection of plants at very reasonable prices. Advice on the best location for planting and how to encourage your purchases to flourish will be readily available.

The garden at Ashleigh Grange is lovely with superb views out over Chapel Farm and the North Downs, a great venue to hold the AGM and start the horticultural year.



We will be asking for the annual subscriptions shortly which will be set at £5 per household. We hope many of you will join.

## Garden Shed's Apple Tree Pruning Workshop

Meeting at Chapel Farm, we joined Alex Valsecchi, consultant in fruit culture, viticulture and general horticulture for a practical step-by-step guide to pruning apple trees.

After a brief presentation where Alex discussed why, when and how to prune these fruit trees, she provided a practical demonstration on a long established tree. Then with kind permission of Liz and John Absalom, attendees were let loose to practise their skills on some of the younger fruit trees with guidance and advice from Alex.

Many of the principals shared by Alex can also be applied to other fruit trees and bushes including pears, gooseberries and blackcurrants. Some of the golden rules include:

- Use clean sharp secateurs and a pruning saw; blunt tools cause tatty cuts and increase the risk of disease
- Prune when the tree is dormant usually between November and early March when the structure of the tree is visible
- Aim to achieve an open goblet shape with a framework of four to five main branches to encourage light and air to circulate
- Start by removing crossing, rubbing, weak, dead, diseased, damaged and dying branches
- Neglected trees should be shaped over two to three years as over-pruning encourages lots of new, non-productive growth

• Cut to the main stem or trunk, making the cut immediately outside the 'collar', visible as a distinct bulge where the branch joins the trunk or main stem

• On younger trees, reduce the length of main branches by about a third, making a downward angled cut to a good, outward-facing bud, to prevent rain pooling on it

• Create a vegetation free area beneath the tree of 60-90 cm radius, prior to mulching and applying fertiliser

The advice from Alex was not to be daunted and do not be afraid to have a go. If you stick with the basic rule to prune out dead, damaged or diseased wood and follow the principles above you can't go far wrong. Cathy Lee



## Pashley Manor Tulip Festival

with a guided tour at 10 am

**Wednesday 27<sup>th</sup> April**

Cost £24.50 Booking is essential

Self-drive. Car share where possible

## Highgrove Gardens - Friday 20<sup>th</sup> May

Coach from Mickleham at 8.30am, Stopping at Tetbury for coffee

Guided tour at 12.30 followed by lunch - £55 Booking essential

See our website for details [www.gardenshed.club](http://www.gardenshed.club)

Any questions: Pauline Davis 07759 646353 [paulinemdavis@gmail.com](mailto:paulinemdavis@gmail.com)

Susie Gowenlock 07768 923088 [susiegowenlock@gmail.com](mailto:susiegowenlock@gmail.com) Cathy Lee 07500 767240 [cplee1603@gmail.com](mailto:cplee1603@gmail.com)





February 25<sup>th</sup> was the night we were all waiting for: our winter training session at the wonderful *King William IV*. We were gloriously looked after by Bella and her team and the food was delicious.

Opening the batting was soup, calamari and chicken goujons delicious. The middle order did not disappoint with rump steak, chicken skewers and fish and chips crowding the table of 25. Then the tail wagged with sticky toffee pudding and crumble.

When Pank Patel arrived after searching *The Running Horses* for cricketers,



Mickleham & Westhumble  
Local History Group

Visit to Juniper Hill

Wednesday 15<sup>th</sup> June

We will meet outside the house for a prompt 2.30 pm start. Booking is essential as numbers are limited to 20. Priority will be given to members who missed our first visit to Juniper Hill until **Wednesday 20<sup>th</sup> April**. Other members and non-members who would like to come can register their interest in the visit now. The event is free for members, £3 for non-members.

To reserve a place or for further information please contact Judith Long: [judith.long2@btinternet.com](mailto:judith.long2@btinternet.com) or 07904 160961

## Cricket Dinner

Chris opened the innings. Will Dennis provided an update on the coffers explaining that after supporting his skiing trip we have no more money.

Kevin Walker never one for keeping quiet spoke eloquently about the past season. Lavishing Chris and fellow players with extraordinary accolades, desperately trying one last time to get in the prizes. Notable mention was made of our new players, Justin, Aaron, Martin and Ivan. We remembered the charming gentleman Don, our captains wonderful father and support of MCC who passed away last season.

There were some memorable moments reflected on: Justin's fabulous batting; Ali's tremendous four wickets in one innings; and Michel's ferocious six hitting and fast bowling.

There were thanks and flowers for Mrs P, our wonderful scorer, Annie for keeping a watch on our treasurer and Alex for being such a tremendous hostess on the tour to the New Forest.

Mark Day was presented with a lovely book to say thanks for keeping the Jeonator away from umpiring.

It was then time for the prizes. Justin won the batting prize with an amazing average of 118. Giles's fantastic wicket keeping took the fielding prize and Kevin the bowling prize for his 10 wickets. Most improved player was Theo Dudley with Greg playing a key mentoring role in his development and Ali won the champagne moment for his 4 wickets. Overseas player went to Nick P and then the final and most important prize Players Player went to Michel.

This was a great way for the evening to end and we look forward to a wonderful season this year. We will be back at Box Hill School playing fields, usually on a Sunday afternoon, so please come down and support us. New members are always welcome. If you would like to join us please contact Chris Presley [chris@thedecorcentre.co.uk](mailto:chris@thedecorcentre.co.uk)

Kevin Walker

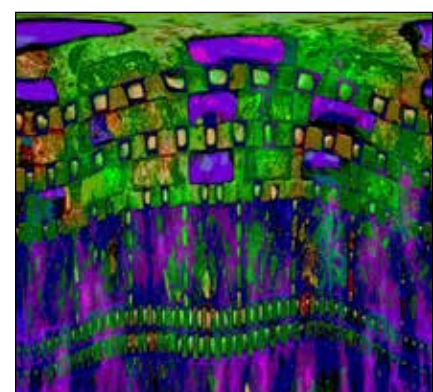
## A New Look at Drain Covers

In the December 2021 edition Barbara Jones wrote about her interest in drain covers from the point of view of their place in the history of the building of the Westhumble estate.

I often look at drain covers and other similar street furniture but for quite a different reason. They are seldom plain, they have dots or other shapes to give them some texture. I like the patterns and I wonder who chooses them. I take photos, then play with the image in Photoshop. The intention is to provide inspiration for textile art. The photographs show a drain cover before and after Photoshop treatment. I have yet to decide how to interpret the latter in stitch.

I believe Jeremy Corbyn also takes an interest in drain covers. I suspect his interest is in the industrial history rather than the potential for artistic inspiration. However, you never know. Norman Willis, general secretary of the Trades Union Council in the eighties, was a keen embroiderer.

Charlotte Daruwalla



Photographs: Charlotte Daruwalla

## Seeing Art In Nature

Since early in the pandemic, I have been out walking with my camera looking for pictures to lift my friends and family. I have been looking for beauty, curiosities, visual jokes and images that provoke contemplation – and always aiming for something new that doesn't exactly repeat what has gone before. Most of these pictures have been taken on the same few routes that I walk from my house in North Norfolk. Many times I start my walks thinking it is unlikely I will see anything new or worth pointing my camera at. I am surrounded by big farmers' fields not blessed with more than gentle undulation and there can be a lot of brownness and greyness in the wintertime. Even so I am commonly surprised by the fantastic things that I am presented with if only I make the effort to look.

Often I walk towards the end of the day to take advantage of the changing light with its colours and many surprises, but on Sunday 6<sup>th</sup> March I fancied some stronger sun and headed out into a chill mid-afternoon of blue sky and fast-moving clouds. At one point I turned back towards the sun and thought I saw the potential for a beautiful traditional landscape photograph. The only problem was that the big fat orb was shining directly at me and was just too bright. Even with clouds starting to move across it, there was an area of flat ugly whiteness defacing the pictures. And then a huge cloud entirely covered the sun and all went dull. I walked home frustrated. I had seen the seed of a great picture and been thwarted.



Photograph: Andrew Tatham

Reflection (the 11<sup>th</sup> day)

Still, there had been a picture from earlier in the walk that I had been happy to share with my friends so never mind. I had supper, watched a film and then at 10 o'clock I thought would have another look through all that day's pictures, and came to realise that there was something worth rescuing. By concentrating on the sun I had been missing the picture that was there, and it was much more interesting

to me than the traditional landscape I had been aiming for. I love its feeling of abstract painterlyness and that it has some kind of spirit despite only being made of earth and water and light. I love that it is the living embodiment of 'seek and ye shall find' and that things will be revealed if you but cast off the blinkers from your eyes. And all it took was removal of the sun (I'm happy to report that it returned the next day).

Andrew Tatham



Scenes from the skittles evening



## Do you need a plasterer?

Over 25 years' experience working on extensions, renovations, new-build and conversion projects for builders and domestic customers alike.



Our work is to a high standard and we are fast. Give Chris a call for a free, no obligation quotation.

**CHRIS C GUY  
PLASTERING LTD**

ALL ASPECTS OF INTERNAL & EXTERNAL PLASTERING  
07740 860560 [chrisguyplastering@gmail.com](mailto:chrisguyplastering@gmail.com)

**We provide the best possible care for your feet**

**Book your appointment:  
01372 454583**



**Bookham  
Chiropody & Podiatry Clinic**  
Diagnosis, Expert Treatment & Professional Care  
for Your Feet

**29 High Street, Great Bookham KT23 4AA**  
[www.bookhamchiropody-podiatry.co.uk](http://www.bookhamchiropody-podiatry.co.uk)

## Domestic Appliance Repairs

30 years' experience repairing and installing all gas and electric domestic appliances



- Cookers Microwaves
- Dishwashers
- Washing machines
- Fridges / Freezers
- Water coolers
- Coffee machines
- Tumble dryers

**Contact: Andy 07895 719706**  
[andy@kirksdomestics.co.uk](mailto:andy@kirksdomestics.co.uk)



07871 051661 / 01372 458616  
[timskerittgroundworks.co.uk](http://timskerittgroundworks.co.uk)

**TimSkerritt**  
LANDSCAPE & GROUNDWORKS

**Turn your vision into a reality**

Tim Skerritt Landscape & Groundworks offers a comprehensive range of services to both commercial and domestic clients across Surrey.

From hard landscaping to extensive site excavations, we offer a high quality, honest, reliable and competitively priced service, guaranteed to meet all your needs. Contact us today to find out more.

## A25 ELECTRICALS

**Domestic & Commercial**

- Electrical Installations
- Alterations
- Expertise in Fault Finding
- Condition Reports

**07760 852 540**  
Part P Approved

**PAINTING  
DECORATING**

ANDREW CLARK 07800 796 737

INTERIOR & EXTERIOR • CARPENTRY • HANDYMAN

## Dorking Pest Control Services

Local Authority Approved Contractors



Our Services include: Wasps Bee Swarms Hornets Rats Mice  
Squirrels Fleas Flies Ants Cockroaches Bed Bugs  
Rabbits Moles Foxes and Deer



• Domestic Commercial and Industrial • Contract Work • Preventative Control Programmes

**Experts in pest control throughout Surrey**

Office: 01306 743001 Ivor: 07710 117491 Chris: 07971 519415

[www.dorkingpestcontrol.com](http://www.dorkingpestcontrol.com)

## Cryptic Delicacies

Last month's puzzle was roughly themed around **TOY STORY**, with various references to that film even if they weren't explicitly linked together. These were **WOODY** (the lead cowboy toy voiced by Tom **HANKS**), Buzz **LIGHTYEAR**, **MISTER POTATO HEAD** and **SLINKY**. Even without including Mr Lightyear's first name, it was still a nightmare to set up a grid fitting all those names, and the need to write the resulting 36 clues including a lot of very short words, has made me think about the need for a change in tactics when selecting themes.

Here are some of the clues worked out, with definitions underlined:

**9 Cockney asking if he would sound as dense as a post (5)**

**WOODY**

If you ask 'if he would...', you would say 'Would he...?' or in Cockney, 'Would 'e...?' which sounds like **WOODY**

**25 Mummy's boy is involved in Nazi organisation trickery on the eastern border (5)**

**SISSY**

'is involved in Nazi organisation' = **IS** put in **SS** (for Schutzstaffel, which directly translates from the German as 'Protective Echelon') = **S-IS-S**, 'trickerY on the eastern border' = **Y**

**2 Walkers make lots of use of this motion to ingest a load of tasteless rubbish (6)**

**POTATO**

'motion' = **POO** takes in 'a load of tasteless rubbish' = **TAT**. Walkers, of course, make very tasty rubbish promoted by an ex-footballer. It's always a good idea to have a think whether the first word of a clue could be a proper noun, as of course it is capitalised as the first word of a sentence so that you can't see whether it would have been capitalised anyway as a name.

**1 Chews noisily when turning round pen (4)**

**SWAN**

'Chews' = gnaws, the noise of which sounds like **NAWS**, turned round to give **SWAN** = 'pen', a female swan.

**3 In Chitty Chitty Bang Bang was Richard briefly with vehicle in front of this earthwork? (4)**

**DYKE**

'Richard briefly' = **Dick**, 'vehicle' = **van**, and those come before **DYKE** as someone who was in Chitty Chitty Bang Bang, playing the eccentric inventor Caractacus Potts. The film was based on a book by Ian Fleming, with one of the screenwriters being Roald Dahl (who in an unintentional coincidence also appears in this puzzle).

**20 Loud argument is what is rotten at the heart of London (3)**

**ROW**

Rotten Row runs along the south side of Hyde Park, and was created in 1690 so that King William III could negotiate more safely the route between St James's Palace and his new home of Kensington Palace. The park at that time was a refuge for highwaymen and 300 oil lamps lit the 1,500 yard-long Route du Roi (or King's Road), its supposed original name later being corrupted to Rotten Row. Amazing to think there has ever been any corruption in London but here is direct evidence (as furnished by the Royal Parks website and one can't hope for a greater source of historical truth than that).

**28 Vegetarian dish is the renowned creator of whizzpoppers (4)**

**DAHL**

Roald **DAHL** came up with the word 'whizzpoppers' as a children-friendly word for what are produced if you drink Froboscottle, the green-coloured fizzy drink consumed by the Big Friendly Giant in 'The BFG'. Even if



you didn't know that word (or were too shy to google it), I hoped that its onomatopoeic nature might still conjure up the renowned result of eating curried lentils. And the name of the dish can be spelt 'dal', 'daal', 'dhal' or 'dahl' which derives from the Sanskrit verb 'dal' meaning 'to split' with the essential ingredient of the recipes being dried split pulses (and I think 'dahl' is an Anglicised misspelling).

**8 A pair of rodents (one missing its tail) - I bet there were more of them by this point... (6)**

**ARARAT**

'A' + 2x **RAT**, but one **RAT** has its tail missing, so **A** + **RA** + **RAT**. A pair of rats must have been among the animals going two by two onto Noah's Ark. Even if the female rat was not pregnant before embarking, the average gestation period of a rat is 21 to 23 days (with 8 to 18 pups in a litter) so after 40 days and 40 nights afloat, it seems highly unlikely that there were still only two when they reached Mount Ararat (unless of course they had been eaten by weasels, cats or very hungry elephants – which reminds me of a very funny sketch on John Finnemore's Souvenir Programme which postulated the need for several arks in order to feed/protect the different levels of the food chain). Whatever, I accept that this may have been a tricksiness too far.

I hope this helps and it would be great to get any feedback via [andrewt@andrewtatham.co.uk](mailto:andrewt@andrewtatham.co.uk) Andrew

Notice on a gate

**The farmer allows walkers to cross the field for free, but the bull charges.**



**10 Year**  
Manufacturer's  
warranty available  
with any new boiler  
Oil, LPG and Gas Registered • Consult • Design • Install • Maintain

**SEENERGY**  
INNOVATIVE ENERGY SOLUTIONS

Call for a free quote on  
**01306 735499**  
[www.seenergy.co.uk](http://www.seenergy.co.uk)  
[enquiries@seenergy.co.uk](mailto:enquiries@seenergy.co.uk)

EMERGENCY  
24 HOUR  
SERVICE  
Best Buy  
Which?  
Gas Boilers September 2018

**Get IT Fixed, Get IT Connected**  
Expert Repair & Maintenance



Brockham based. No call out charges. Fully transparent quotations with no hidden costs. We make technology work for you.

Call us now on **01737 845980** ChalkHill Systems  
[www.chalkhillsystems.co.uk](http://www.chalkhillsystems.co.uk)

**M & R BUTLER**

- GENERAL HOUSE MAINTENANCE
- EXTERNAL & INTERNAL DECORATING
- BESPOKE CARPENTRY
- LOCAL REFERENCES
- 40+ YEARS EXPERIENCE

07776256131 / 07896015771



**TONY WINCH**  
CARPENTER, JOINER  
& CABINET MAKER  
[www.tonywinch.com](http://www.tonywinch.com)  
**01306 742373**  
**07969 016 924**

**Building Plans**  
*For home improvements & extensions*  
Including planning & building regulations  
Fast efficient service at competitive rates

**MICHAEL LLOYD** CEng MICE  
For free consultation:  
Phone: 01483 205479 or 07958 791 402

**RWP**  
Extensions and alterations often require a  
Structural Engineer

**Robert Wynter & Partners Ltd**  
**01306 879875**  
Book House Vincent Lane  
Dorking RH4 3HW

**remedial roofing**  
*For people with roof issues and deficiencies*

- New roofs – slate & tiled roof specialists
- All roof repairs, moss removal & gutter clearance
- Flat roofs, traditional felt & GRP fibreglass
- New uPVC Fascia, soffit & guttering

Obtain an up-to-date report of remedial roofing on [www.checkatrade.com](http://www.checkatrade.com)

ALL WORK GUARANTEED  
Call us today for a FREE quotation on:  
01306 304736 | 07852 833802  
[info@remedialroofing.co.uk](mailto:info@remedialroofing.co.uk) [www.remedialroofing.co.uk](http://www.remedialroofing.co.uk)

Confederation of Roofing Contractors  
The Premier Roofing Trade  
Association in the UK  
All Members Offer  
Insurance  
Backed Guarantees

Cheekatrade.com  
SURREY  
TRADING  
STANDARDS  
APPROVED



Did you know that World Book Day is celebrated in more than 100 countries around the globe, and that next year - 2023 will be the 25<sup>th</sup> anniversary of World Book Day?

It has certainly changed over time, I remember my own children having World Book Day, but it only consisted of receiving a voucher to spend on a book fair at school. Anybody in the village

hall car park on this year's World Book Day would have been met with a vast array of fancy dress costumes, Percy the Park Keeper, Spiderman, Wendy from Peter Pan and a few Gruffalo's being ones I recognised. These were mainly children on their way to St Michael's School for what I imagine was a fun-filled day of storytelling. We had a few nursery children in costumes too, but as we have no uniform regulations, it is not too unusual for us to have a few superheroes or Disney princesses on the carpet in the mornings. At nursery we celebrated World Book day by re-opening our book lending library and spending a week focused on a particular favourite book, Michael Rosen's 'We're going on a Bear Hunt'.

The nursery was set up with elements from the story, we made 'binoculars' for bear spotting, sorted bears in mud, had mud painting, a swishy grass frame, swirling whirling bubble 'snow' storm

and we came together at the end of the morning's activities by acting out the story in our forest school ending up at the cave with one of our soft toy bears. A particular hit was the mud painting. Thick oozy mud! Children were provided with a tub of soil, some flour gloop, water, pots, spoons and brushes. They really enjoyed creating their own mud paints, exploring the different textures and the opacity levels (we like to introduce new vocabulary) using varying amount of 'ingredients'. Expanding the children's significant interest in this 'recipe' creation, the following week we provided an opportunity to paint a vase of 'Rainbow' tulips, with children mixing their own colours using powder paints. We look forward to seeing more signs of spring, daffodils in our own nursery garden and – woo hoo – we have eggs in the incubator, which should hatch in time for next month's magazine.

Hilary Budd







## Mickleham Village Hall Dell Close

Weekdays 9.15 am - 12.15 pm (term time)

### WITH OPTIONAL LUNCH CLUB

On Mondays and Thursdays there is the option for children to stay until 2.45 p.m.

Maximum 26 children per session

• playing naturally • learning naturally

We offer an excellent range of pre-school activities for 2½ to 5 year-olds where they can learn through play in an informal friendly atmosphere.

Contact us for more information about admissions

01372 361021 [www.stmichaelscommunitynursery.co.uk](http://www.stmichaelscommunitynursery.co.uk)

### Answers to the March crossword

**Across:** 9 Woody 10 Lightyear 11 Nearest 12 Cheddar 13 Trots 15 Can 16 Hue 17 Yum 19 Omicron 20 Row 23 Spy 24 Pic 25 Sissy 27 Stand-in 29 Atheism 32 Earthiest 33 Ankle

**Down:** 1 Swan 2 Potato 3 Dyke 4 Clot 5 Egocentric 6 Styx 7 Headgear 8 Ararat 13/14 Toy Story 15 Chimpanzee 16 Hanks 18 Massacre 21 Why 22 Mister 26 Slinky 28 Dahl 29 Arty 30 Head 31 Meek

### BRAIN TEASER answer: On the right side of the law

## Suitable items for the foodbank collection

Tinned veg / tomatoes / soup / sauces / baked beans	Washing-up and cleaning products
Powdered milk / UHT milk (green and blue only)	Tissues / paper towels / tampons
Rice pudding / long life sponge puddings	Men's / women's toiletries
Coffee / tea bags / long life fruit juice	Laundry products
Pasta / rice / pulses / instant mash	Nappies
Jam / honey / marmalade / spreads	Pet food
Sugar (500g bags only)	



**Please do not include  
out-of-date items or those  
that require refrigeration**

### LOCAL FOOD BANK COLLECTION POINTS

#### MICKLEHAM

Garden Corner off Old London Road  
Mary Banfield 01372 373912

#### WESTHUMBLE

St Anthony, Pilgrims Way  
Sue Tatham 01306 882547

## Vivien Cresswell Made-to-measure Soft Furnishings

Curtains Roman Blinds Cushions



Extensive range  
of fabrics

01737 843858

[info@cresswellscurtains.co.uk](mailto:info@cresswellscurtains.co.uk)

[www.vivienecresswell.co.uk](http://www.vivienecresswell.co.uk)

## Julie Watts Family Law

AN AFFORDABLE AND EXPERIENCED PROFESSIONAL  
ALTERNATIVE TO TRADITIONAL SOLICITORS

• Divorce • Arrangements for children • Finances

• Court Proceedings

PROUD TO PROVIDE A DIFFERENT KIND OF SERVICE

• Affordable fees • Straight-talking advice

• Practical real support

Contact me for a consultation

07808 572157 [juliewattsfamilylaw.co.uk](http://juliewattsfamilylaw.co.uk)

## A very busy time

### Shrove Tuesday

The children of St Michael's have had a very busy few weeks. We were lucky enough to have The Rev'd Sandra Faccini come into school in early March to discuss Shrove Tuesday. Sandra explained the importance of this event in the Christian calendar and the children considered what it might be like to live without food for 40 days and nights.

We then held our 'Pancake Café' where the support staff and teachers demonstrated how to make pancakes (some great Maths learning there) and then helped the children make pancakes and of course put them to the taste test. All had a lovely time; the children wished it was Pancake Day every day.

### Great Fire of London Day

Our topic this half term is 'Fire' when the children have been learning about the Great Fire of London. We have been making our own houses in DT and the plan is to set them on fire to help the children understand how quickly fire can spread and why houses are built much more safely today.

To immerse the children in the topic, we organised a theatre workshop on the Great Fire of London. This was brilliant and the children thoroughly enjoyed the day. They were incredibly knowledgeable about the events that took place in the Great Fire of London and were able to enhance their learning by taking part in different drama-based activities with the workshop actor. They pretended to be Samuel Pepys, the baker and other characters from this period in history.

As part of the children's art this term, they have been exploring collage. Some children have independently created Great Fire of London collages.

### World Book day

For World Book day this year, our theme was 'traditional tales'. The children came to school dressed as their favourite character from a traditional tale of their choice. They moved around the school listening to and engaging in different traditional tales. In the Year 2 classroom, the story was an alternative version of 'Jack and the Beanstalk' – 'Jim and the Beanstalk'. The children thought this was hilarious.



**St Michael's  
School**

[stmichaels-dorking.surrey.sch.uk/](http://stmichaels-dorking.surrey.sch.uk/)

The following week, a dance company came into school continuing the theme of traditional tales and the children took part in a range of fun activities based around 'The Gingerbread Man'.

### Ducklings and spring adventures

In our Early Years classroom, the children have fully immersed themselves in all things 'spring'. They went on a spring walk, where they looked for all the signs of spring and have really involved themselves in much more outdoor play, now that the weather is improving. Mrs Moore and Miss Fox have re-introduced the water tray outside and the children are now measuring and making potions. To enhance the children's understanding and learning of spring, we brought duck eggs into the classroom. We saw them hatch and enjoyed watching them grow and holding them. What a treat for the Ladybird class. Nicola Cleather



**Please let the Jubilee Committee know if you plan to attend the grand Jubilee lunch on Sunday 5<sup>th</sup> June. See page 5.**



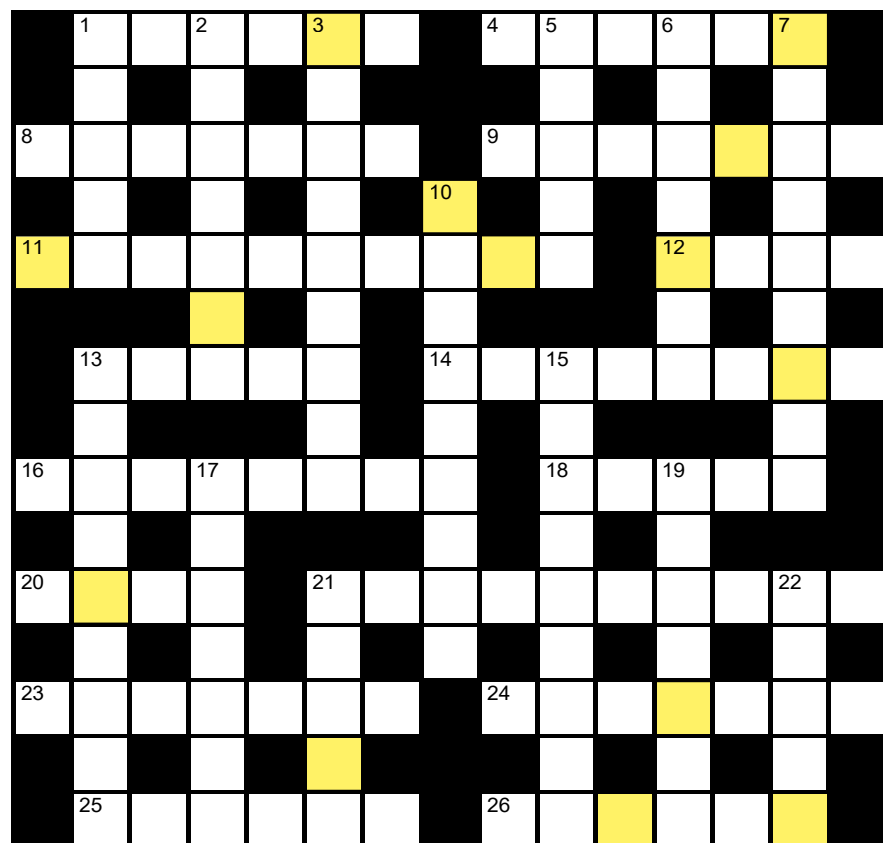


## Cryptic Crossword

*The golden squares can be made into someone who would become famous for 4 1D, 9, 3, 13D, and 19/=15 (9,5)*

### ACROSS

- 1 Hung around in suit being exceptionally keen (4,2)
- 4 Pop in to throw scarf at her (6)
- 8 Pay for Covid response at an increased rate (5,2)
- 9 Organisation of care had the appearance of being something it's not (7)
- 11 Could be recent pin-up? (10)
- 12 After cruising round Eddystone starts to make for land (4)
- 13 Deliver broadcast audio authorization (3-2)
- 14 Godfather uses his head to be in the lead before strange blunder (8)
- 16 Sailed to accommodation that is in the middle of nowhere (8)
- 18 Organised disembowelled knights into orders of nobility (5)
- 20 Hot place for Grayson Perry to link up (4)
- 21 Tough manor where characters are beaten up and doleful sounds come from this after a blow in the face (5,5)



- 23 Lickspittles are little morons (not half!) (7)
  - 24 He dared to spin round Queen Elizabeth I as she appeared (7)
  - 25 Firearm shooting backwards to nail hunk (6)
  - 26 Kept sober in audition (6)
- Down**
- 1 Canada is associated with this pinch on the buttocks (5)
  - 2 What is occurring once a day but not occurring during the day? (7)
  - 3 Unhappy about shoe floating home (9)
  - 5 This chap hid a black book laden with menace in the garden (5)
  - 6 Sounds like her expressions of sympathy are cheering (7)

- 7 What when put on horse can make it faster but when put on bicycle will make it slower? (9)
- 10 Gordon's bum is beaten with missing skinhead's exotic instrument (5,4)
- 13 Being endlessly sick in soup for the bad gut feeling (9)
- 15 See 19
- 17 Public school has large connection with unrestrained caning (7)
- 19/15 Twenty horns throb balefully on the way from Kyiv to Riga (5,2,9)
- 21 Grinder enables you to make this step like a true queen (5)
- 22 Grant is a legally incompetent person (5)

Andrew Tatham

Photograph: Ben Tatham



Refurbished footbridge over the River Mole downstream of the Stepping Stones

**R&B FENCING**

**RESIDENTIAL • COMMERCIAL  
AGRICULTURAL • SCHOOLS • ACOUSTIC  
HOARDING • GATES • SECURITY**

**RICHARDSON & BRADS FENCING LTD**  
**T: 01306 640 143 - 01483 414 745**  
 E: INFO@RBFENCINGLTD.CO.UK  
 W: WWW.RBFENCINGLTD.CO.UK  
 A: 168 SOUTH STREET, DORKING, SURREY, RH4 2ES  
 UNIT 45 MARTLANDS INDUSTRIAL ESTATE, SMARTS HEATH LANE, MAYFORD, GU22 0RQ

**J S Wilson**  
 Mickleham

## Carpentry & Building Services

Extensions ~ Conversions  
 Refurbishments ~ Property Maintenance  
 Fully guaranteed ~ Fully insured  
*One call WILL solve it all*

Contact Jason on: 07761 926684 or 01372 379359  
 info@jasonswilson.co.uk

**MEABY & Co**  
 solicitors

**Strength & wisdom in law & business since 1848**

Meaby & Co Solicitors sits proudly in the heart of Dorking High Street providing expert legal advice to individuals and businesses throughout the town and its surrounding area. With additional offices throughout London, our experienced team, our 5\* Google reviews and award winning service will ensure that all of your legal needs are supported on your doorstep.

**Specialising in:**

Residential & Commercial Property	Fraud & Private Crime	Reputation Protection
Wills, Trusts & Probate	LGBT Experts	Commercial & Corporate Law
Litigation and Mediation	Employment Law	Media & Entertainment
Crisis Management	Family & Divorce Law	Lease Extensions

Drop by our offices at 159 High Street, Dorking RH4 1AD or contact our switchboard on 01306 884432. Need advice elsewhere? We can assist. We have branch offices in Camberwell, Soho & Chigwell.

**Switchboard: 01306 884432** [www.meaby.co.uk](http://www.meaby.co.uk) @MeabyandCo meaby-&co MeabyandCo meabyandco



## Need help with your accounts?

Running a business needs time and energy – don't waste your time working on your accounts when you can work on your business instead!

At a4c we provide fixed fee accountancy solutions with friendly support throughout the year. Services include accounts, tax returns, VAT, payroll, book-keeping etc.

Friendly, approachable and local to Dorking – we enjoy getting to know our clients so call us today for a no obligation chat.

**We LOVE numbers so YOU don't have to!**

**01737 652852**

[esther@a4cgroup.co.uk](mailto:esther@a4cgroup.co.uk)

[www.a4cgroup.co.uk](http://www.a4cgroup.co.uk)



# 01306 88 55 33

**For quotes or to make a booking  
email us on: [Enquiries@dorkingtaxis.co.uk](mailto:Enquiries@dorkingtaxis.co.uk)**

**[www.dorkingtaxis.co.uk](http://www.dorkingtaxis.co.uk)**

- 4 / 6 / 8 Seaters
- Airport specialists
- Ferry ports & Eurostar
- Courier services available
- Home to School Transport service available
- Long distance journeys welcome
- All drivers & vehicles are fully vetted by MVDC & Surrey County Council
- Lady drivers available on request
- All major card payments accepted



**RANMORE  
RENOVATIONS**

## LOCAL BUILDER

New bathroom installation specialist,  
plumbing/heating,  
electrics, plastering & tiling,  
decorating, Karndean flooring.  
All building works and property  
maintenance undertaken.  
All works guaranteed  
36 years' experience

Please contact Damian  
07940 599845 / 01306 880332  
[musgrovebuild@gmail.com](mailto:musgrovebuild@gmail.com)



# Home Instead

A local, award-winning business supporting people living in Epsom and Mole Valley, enabling them to remain living independently AT HOME as well as providing companionship and colour to peoples lives.

**RATED AS OUTSTANDING BY CARE QUALITY COMMISSION**

Committed to providing a quality, trusted and consistent home care service, we only recruit local CareGivers and match every CareGiver to every client so the same person will call each time.

**01372 741544**

[simon.burrowes@homeinstead-epsom.co.uk](mailto:simon.burrowes@homeinstead-epsom.co.uk)

[www.homeinstead.co.uk/epsom](http://www.homeinstead.co.uk/epsom)

# John Wadsworth



**CALL NOW FOR YOUR FREE VALUATION  
01372 450500**

[www.johnwadsworth.co.uk](http://www.johnwadsworth.co.uk) [sales@johnwadsworth.co.uk](mailto:sales@johnwadsworth.co.uk)  
A professional efficient and friendly service