

MICKLEHAM PARISH Magazine

A community magazine for Mickleham and Westhumble



A.N. Colwell 1984

September 2023



**SURREY HILLS
HEATING LTD**

**DOMESTIC BOILER SERVICING
AND BREAKDOWN**

OIL, LPG & GAS BOILERS

Call Dathan on: 07944 575970

sales@surreyhillsh heating.co.uk

www.surreyhillsh heating.co.uk



Bullimores



Accountants for Life

Tax • Accounts • Probate

Inheritance Tax &
Executorship

T: 01306 880880

E: partners@bullimores.co.uk

W: www.bullimores.co.uk

Bullimores LLP licensed to carry out the reserved legal activity
of non-contentious probate in England & Wales by the ICAEW



Stepping Stones

MORE THAN JUST A PUB

CAFÉ-BAR

Serving Morning Coffee and Afternoon Teas

RESTAURANT & ALFRESCO DINING

Serving fresh classic-style pub favourites

Live music events Take-aways available

Available for functions / private parties / celebrations / family gatherings

Dog friendly

**Last Monday night of the
month from 7.30 pm**

01306 889932

steppingstonespub@gmail.com

www.steppingstonesdorking.co.uk

**Please check website for up-to-date menus
events and current opening times**

Sherlock Funeral Service

*Sherlock Funeral Service is an
Independent family owned business,
established over 100 years*

- Private Service Chapel & Rest Rooms
- Home visits arranged if required
- Pre-Paid Funeral Plans available
- Free Parking

Telephone: 01306 882266

Trellis House, 190 South Street, Dorking RH4 2ES.

Email: office@sherlockandsons.co.uk



Funeral Directors & Monumental Masons

Mickleham Parish Magazine

**September
2023**

**Mickleham
Parish
Magazine**

A community magazine for
Mickleham and Westhumble
published under the auspices
of Mickleham PCC with an
independent editorial panel.

The magazine is published at the
beginning of each month except
January and August.

COPY DEADLINE

OCTOBER MAGAZINE

Sunday

10th September

send to:

editor@micklehammag.co.uk

Co-editors

Charlotte Daruwalla

07933 300744

Jan Budleigh

07780 976301

Contributions in any form
are welcome as are good
quality photographs. There
is no charge for advertising
local charity and community
events. However the editors
reserve the right to shorten
omit or reformat articles
submitted for publication
depending on space.



Printed by Holbrooks Printers
Portsmouth

Mickleham Rectory

Hi everyone

Autumn approaches, yet we only seem to have had glimpses of summer. How precious were those dry, warm sunny days. The weather has certainly been unpredictable rather than settled. In recent years we have come to expect more consistently warm, dry weather than previously experienced. Of course, many of us are grateful that we have not endured the extreme heat and wildfires which have disrupted southern Europe and Maui. It remains to be seen if we will get better weather this autumn. We can but hope. If global warming means more climate change like we have had this year, I am even keener to do my bit in combatting it!

I find unpredictability difficult. This summer I kept checking the weather app on my phone before going out, as I tried to decide if I needed an umbrella or a fleece over my summer tee-shirt. The forecast was not always dependable, and I got wet unexpectedly or was too hot. That is minor though when we consider how unpredictable our world seems. I did not expect the war in Ukraine to last this long, nor Covid, nor major inflation and ongoing rises in interest rates.

Times of uncertainty give me a reluctance to plan because things might change. Instead, I am learning to live much more week to week, which does have benefits. I seem to enjoy the present more and don't focus so much on the future. There are so many simple pleasures like hearing the birds sing, meeting a friend or walking my dog.

But aren't Christians supposed to focus on the future, on heaven? It is reassuring to have confidence in the ultimate future, which is not dependent on anyone or anything other than God himself. That is my security, God is trustworthy. However, Christianity is as much about life today as it is about heaven in the future. As we live on a day-to-day or week-by-week basis, we become increasingly reliant on the strength and wisdom God gives to make the most of every hour and recognise the blessings we have. Christians are also called to make a difference and work for good today.

Harvest is coming. A good harvest has always depended on the weather but, once the food was gathered, it was time to celebrate and be thankful. It is a reminder to us to be thankful for all we have received, food and more, and to celebrate God's goodness. It is also prompts us to share what we have with those who have less. God does not need my packet of pasta or UHT milk that I will bring to church but there are people who do. We give to God as we give to others. The increase in donations to the FoodBank and the Meeting Room has been great and is much appreciated and so let's give as much as we can as a Harvest offering. Come to the 11am service in church, bring your donations and enjoy some food and drink together. I hope to see you there.

God bless.

Sandra

The Rev'd Dr Sandra Faccini, Parish Priest

1st October, Harvest Workshop at St Michael's School at 9.30 - 10.40 am followed by a Harvest Family Service at the church at 11 am. See page 27 for more details.


St Michael's Church Services

10 am Sunday Services available on Zoom

Joining information for both Zoom and telephone users is available in Pews News Online each week. If you would like to join us by Zoom then contact Alison Wood for the codes or to ask her to include you on the emailing list for Pews News: admin@micklehamchurch.org.uk / phone 01372 376443. We hope as many of you as possible will be able to join us for worship.

Please refer to Pews News Online for the latest information. If you missed any of the services or would like to revisit them all are available on the church YouTube channel: <https://youtube.com/channel/UCI4pbewCT91iZhcd0EjBlw>





Bible Study

Monday Evening Group
Contact Amanda Wadsworth
aewadsworth@hotmail.com

Thursday Morning Group
Restarts 14th September
Contact Alison Wood
01372 376443
alison.wood29@btinternet.com

ALL WELCOME TO EITHER GROUP



Daytime Alpha Course

mid-September to end of November
either Monday or Tuesday, morning or early afternoon

Alpha is a great way of exploring and discussing faith for anyone, from those who have been Christians for a long time to those who are not sure that they are.

Contact Sandra (Parish Priest) if interested
01372 417664 07763 488961
parishpriest@micklehamchurch.org.uk





Tea @ 3

Monday 18th September

Hosts
Sue and Ben Tatham
St Anthony, Pilgrims Way, Westhumble

ALL WELCOME TRANSPORT AVAILABLE
Please get in touch with Julia if you are willing to help with future events
siberrman@btinternet.com



First Saturday of the month

Coffee Morning

Westhumble Chapel

Saturday 2nd September

Come along between 10 am and noon
Everyone welcome
Coffee and cake £2
Free drinks for children
For further information call
Jonathan Blake 07787 126966



Social gatherings open to everyone

Men's and Women's Saturday Breakfasts

at the Stepping Stones
9 – 10 AM

WOMEN'S BREAKFAST

NORMALLY 3RD SATURDAY
NEXT BREAKFAST
30TH SEPTEMBER
Book with: Stephanie Randall
srandall55@gmail.com

MEN'S BREAKFAST

4TH SATURDAY
NEXT BREAKFAST
23RD SEPTEMBER
Book with: Andy Diamond
diamo1@hotmail.co.uk

St Michael's Church Community Group Continued Support for FoodBank

It does not take Oppenheimer to tell you that we have a substantial and ongoing food crisis, which has reached into even the most prosperous areas of the country, and into our own and adjacent parishes. You will have noticed that over recent weeks, we have increased the 'push' on

the FoodBank giving. Weekly postings on WhatsApp, the enormous success of the new Giving Area in the church (which has proved most successful before and after services on Sundays) and the powerful appeal notice in the July magazine, have been evidenced by a threefold increase in giving. THANK YOU ALL.
The perfect storm of decreased giving

and increased need (completely interlinked factor) has meant shortages in FoodBanks nationally. This week, we received a letter of thanks from Dorking FoodBank, presented below as the FoodBank appeal. All too often, 'giving fatigue' can set in after a promising start. PLEASE let us ensure that this is not the case here. The letter speaks for itself.
Mark Day

URGENT FOODBANK NEED

Your contributions are essential to so many local families

This is a recent thank you letter to Mary Banfield from the Warehouse Co-manager at Dorking FoodBank. The statistics quoted show clearly why your contributions are so necessary and appreciated.

Thank you so much to you and the people of St Michael's for all your donations to the foodbank. You are so faithful in collecting and delivering to us and we are so grateful. At the moment, when supply is falling and demand is so high, we are particularly relieved to get regular donations that continue to boost our supplies.

Our last stats suggested that we are regularly feeding about 100 people a week (2021/22), which is a 50% increase on pre-Covid numbers (2018/9). This year's stats look set to go even higher.

On top of that we are constantly meeting additional needs in the area. For example, we have just sent out 280 Holiday Boost bags to families who struggle with feeding their children during the summer holidays when no school lunches are available. Those bags supported 1,000 local adults and children.

I hope that this is helpful [to know]. Keep up the good work. Many thanks.

Articles **always** needed; loo rolls, UHT milk, shampoos etc, and TINNED FOOD (meat/fish/fruit/veg). See page 26.

WE CAN MAKE A BIG DIFFERENCE HERE

DROP POINTS: The Tathams, **St Anthony, Westhumble**, halfway down Pilgrims Way on the left. The Banfields, Garden Corner, entrance off Old London Road into **Mickleham Hall**, and first right to the end house.
Or at the back of **Church** at weekends.

Sausage and Skittles Evening

Last year's Skittles Competition was great fun. Sandra's Team, 'The Holy Rollers', came out on top, and Jim Evans bowled a fearful bowl. Now that we know what we are doing, it will be even better this year! So, note the date Saturday 14th October at 7 pm for a 7.30 pm start. Teams of between 6 and 8 will have their own table. *Debbie the Sausage* will be on hand to provide sumptuous refreshment. There will of course be a bar! And Prizes! Tickets are available singly, and you will be allocated a team on the night. We will also be co-opting volunteers to 'captain' and recruit their own teams, allocating appropriate team names. There is room for 10-12 teams of tables of 5-8. So, get in early.

Tickets are available from Denise Darling on 07780 673372 denisedarling4@btinternet.com
Alternatively, catch Mark Day, Andy Diamond or Kelvin Pritchard.
Ticket costs are £8 per person or £40 for a team of up to 8 (payable in advance so that we can pay for the Alley). This cost includes the sumptuous sausages and buns. There is no end to our generosity!

The Rev'd Sandra Faccini adds, with reference to the FoodBank Appeal:
At our Harvest Service we will be collecting food for Dorking FoodBank and the Meeting Room in Leatherhead. Any cash donations will be for the Hunger Crisis Appeal, being run by Tearfund, to help people living in the world's poorest countries. Many have been badly affected by rising food and energy prices and rapid inflation, which are increasing life threatening poverty.

The Return of Autumn Lunches

Following the great success of the weekly Lent Lunches this year, and of the similar success last year of monthly Autumn equivalents, we have decided that demand remains! Two Autumn Lunches are planned. Dates to be confirmed, but please pencil in Thursdays 26th October and 23rd November.

2

3

Superb professional
cleaning of carpets
oriental rugs
upholstery curtains
and leather
Guardsman
anti-stain protection

- spot stain and odour removal
- leather cleaning specialists
- flame retarding
- dust mite reduction service
- all work fully insured & guaranteed

For a free no obligation quotation call today
Freephone 0808 144 9071
John Joannides 28 Bracken Close Bookham

Safeclean
The furnishing care specialists from GUARDSMAN



Pinehurst Rest Home

We aim to provide an excellent service at competitive rates supporting emotional physical and social needs of our clients always respecting and protecting their status as adults

- Residential and 24-hour daycare
- Excellent cuisine
- Facilities for disabled: medic bath / lift
- Home doctor in attendance
- Single & sharing rooms
- Convalescent & short stays
- Lounge with TV & piano
- Separate dining room
- Physiotherapist chiropodist & hairdresser
- Entertainment: theatre visits / parties & cabarets held on premises

National Trust Road Box Hill
Mickleham Dorking Surrey RH5 6BY
Telephone: 01306 889942 / 888253

Dorking Decorators
PROFESSIONAL PAINTERS & DECORATORS

Established Local Family Business

- Over 20 years' experience
- Internal & External
- Commercial & Domestic
- Friendly, First Class Service
- Surrey / Sussex / Greater London

FREE ESTIMATES
01306 640418
www.dorkingdecorators.co.uk
As approved by Checkatrade

51 NORTH
EAT • DRINK • SHOP

Come and visit us.....

- Breakfast and wholesome Brunch
- Morning coffee, cake and pastries
- Fri & Sat Festive Season opening for dinner
- Private hire venue
- 2 bedroom suites now available

fiftyone.degreesnorth@yahoo.com

01306 320455 @51.Degrees.North.Mickleham @51.degreesnorth

London Road (Bottom of Bytton Hill) Mickleham Surrey. RH5 6EH

NH NICHOLAS HARRINGTON

HAIRDRESSING

Hair cutting • Hair colouring • Hair extensions
01372 373355
The Swan Centre, Leatherhead KT22 8AH



SIMON HOOPER

For all your decorating needs...

Professional, friendly and speedy service at all times

Fully insured	Insurance work
Exterior painting	Interior decorating
Free quotes & advice	Oil & Water-based products
Commercial/Domestic work	Wallpaper hanging & removal

07947 135 376 0208 3978 962
www.slhdecoratingservices.com



Newly Elected Councillor to MPC

Following the local elections in May, six of the seven councillors were re-elected to the Mickleham Parish Council. Advertising started at the beginning of June to fill the seventh place and at the last council meeting in July, following a successful interview, the MPC appointed Gill Willson.

A local resident for the last 18 years, Gill has been involved in various volunteering roles within the community. These include being on the Nursery Committee, the Playground Committee and assisting with reading at St. Michael's Infant School. She has also helped with parent support roles, including fundraising, school trips and a variety of other activities.

Gill had previously applied to be a councillor so when another opportunity came up, she felt it was the right time to join. She is extremely excited to be taking on the role and is looking forward to working with the existing councillors. Also, for the opportunity the position gives to contribute and get more involved with the community, offering fresh ideas and a listening ear to residents. Her experience and knowledge of the



local area will prove invaluable and will enable her to make a significant contribution to the work of the MPC with the many issues it faces.

The vacancy followed the resignation of Kayleigh Hunter who moved out of the village this summer. The Chair, David Ireland, thanked Kayleigh for her invaluable contribution to the work of the council and noted that although she has moved away from Mickleham, we are delighted that we will continue to see her, as she remains a member of staff at Juniper Hall.

Mickleham Parish Council

New Heating for Mickleham Village Hall

During the summer break we have replaced the electric heaters along the walls of the main hall with overhead infrared heaters, which are much more effective. The overhead gas heaters will continue as the main initial heaters of the hall. The infrared heaters are more expensive to run and are intended to be used for events such as lectures when silent heating



Robust carrier bags wanted for delivering parish magazines and food bank items. Please leave at food bank collection points. Thank you

is required. The appearance of the hall has been greatly improved by this change, see the photograph. We are greatly indebted to Tony Butler, who investigated ways to improve the heating, organised trips to view heaters in other halls, obtained quotes, managed the whole process, and did some of the work himself.

Ben Tatham



Messy Church is an exciting monthly Christian activity for children run by St Michael's Church, which started in September 2022. The year since has been a learning experience for all. Some of the volunteers had helped at Messy Church in other parishes, some had not. It has been a case of finding our way! Numbers have varied month by month, anywhere between three or four children up to 13 in June (the last session before the summer holidays). They attend with their accompanying adults, either parents, grandparents, or carers.

It has been lovely to welcome families whose children are at the village nursery, infant school or have connections to the villages. Messy Church has been an easy and fun way to enjoy craft activities, games, sing songs, share Bible stories, Christian values, and snacks. The volunteers have loved the opportunity to build on relationships with the children and adults. It is great that those who come help to spread the word among their friends too.

We have also had help from a few Box Hill School 6th form student volunteers. The young children enjoyed being helped by the students, who enthusiastically drew, coloured, stuck and cut out as required, and attempted the actions to the songs we sang. The adult helpers appreciated the opportunity to chat with the very friendly and polite students, who were studying for their International Baccalaureate exams. We hope this partnership can continue.

We hope the autumn term will prove just as popular. Messy Church is fun for all. It runs for three to ten year olds on the 3rd Thursday of every month except August in Mickleham Village Hall. Please do come along and enjoy the fun! If you have any questions, contact Sarah Blake on sarahjbl@outlook.com for more details.

Next Messy Church
Thursday
21st September
3.15 to 4.45 pm

Restoration of the Altar Frontals



Some of the altar frontals laid out

which was then carefully sealed with Japanese glue (photo 5) and mounted on linen from the original frontal. Another piece of church fabric that has needed a lot of work is the purple frontal, which had faded significantly over the years and was damaged in places. Following approval, again from the PCC and diocese, new background fabric was purchased following a donation from Sarah and Jonathan Blake in memory of their parents. The original velvet panels, fringing and embroidery were removed and transferred to the new fabric. Linen from the redundant frontal was also used as backing fabric so that there was minimal waste, and the integrity of the linens was preserved as much as possible. Interestingly the design on the fabric for the purple frontal carries a motif of a passionflower, also seen on the cream frontal from many years ago (photo 6). This motif traditionally represents the passion of Jesus, culminating in his crucifixion. As part of this year's Heritage events, there will be a display of all the church and chapel frontals in the church on Saturday 16th September, details of which can be found opposite. A huge thank you goes to Ann, Annette, Bernie, Beverley, Frances, Pam and Sheena for their dedication to this task and to Mary Riley for helping to organise it.

Made by the people, for the people to the glory of God.

Catherine Diffey

What do a baby's hairbrush, a hand held vacuum cleaner, a pair of tights, a magnifying glass, Japanese glue and a big bath have in common? They have all been used to clean and restore the altar linens at the church and chapel.

We are fortunate to have several beautiful altar frontals in a variety of colours to reflect the different seasons within the church liturgy. Sadly, some were looking rather worn and even torn and we needed help to restore them. Members of the local Arts Societies very kindly came forward with the skills, equipment, and time to do this.

At our first meeting on 30th January all the frontals were laid out in church, a wonderful sight, and time was taken examining each one and agreeing what work was needed. In some cases, this was nothing more than a light clean, hence the use of a baby hairbrush and a gentle vacuum, with tights over

the nozzle so that any fine decoration would not be lost (photo 1). At the other extreme, plans were made for the replacement of fabric. Many of the fabrics are not suitable for washing but the cleaning of stained backing linens is where the large bath came in. They had to be carefully unpicked from the decorated parts (photo 2), measured, washed in liquid soap by hand, rinsed then washed again with a gentle stain remover and left to dry before being gently ironed and stretched to minimise shrinkage. After all this the decoration was carefully re-attached. Other frontals had missing embellishments and embroidery and time was taken to secure suitable replacements (photo 3).

Sadly, a particularly beautiful cream frontal was beyond repair and permission was granted by the diocese, after approval by the PCC, for it to be disposed of. Time was spent removing all the exquisite embroidery (photo 4)



1 Sheena and Pam vacuuming



2 Annette and Frances unpicking backing



3 Bernie and Ann replacing gemstones



4 Example of embroidery



5 Beverley sealing the embroidery



6 Comparison of motif



England's largest Festival of History and Culture

Friday 8th to Sunday 17th September

This year's theme: Creativity Unleashed

Heritage Events in St Michael's Church, Mickleham

Friday 15 th September	7 pm	* <i>Fanny Burney and the Surrey Connection</i> . Sir Brian Unwin will give a talk documenting the early life of Fanny Burney and her marriage to General Alexandre d'Arblay which took place in the church of St Michael and All Angels.
Saturday 16 th September	10 am-4 pm	Display of our wonderful textiles marking the changing seasons of the church year will be on display. Many of these church and chapel textiles have recently been restored by volunteers from the Arts Societies of Dorking and Leatherhead who will be available to answer any questions.
	1-3 pm	Recital of Organ Music by David Fishwick
Sunday 17 th September	3 pm	* <i>Mickleham's other Creative People</i> – Over the centuries Mickleham has attracted many notable writers, artisans and thinkers. Sue Tatham will highlight some of these creative people other than Fanny Burney, the subject of an earlier talk.

Considering its size, an inordinate number of notable people have been associated with Mickleham. Some have made it their home and others as visitors to one of the village's many large houses. In addition to its beautiful surroundings and proximity to London, perhaps it is the magnetic effect of one celebrity attracting others. Considering creativity in its broadest sense this talk will focus on some of the possibly less well-known people who made their mark on society in their day and others whose legacy lives on.

* These talks will be available via Zoom:

Friday 15th September 7 pm – *Fanny Burney and the Surrey Connection*

Join Zoom: <https://us02web.zoom.us/j/84465287474?pwd=MXJWajQ4enZEdEo3SnBuUStpelBuQT09>

Meeting ID: 844 6528 7474 Passcode: 252905

Sunday 17th September 3 pm – *Mickleham's other Creative People*

Join Zoom: <https://us02web.zoom.us/j/86336272892?pwd=Y202RkMvQXZFM1RGUHB0aEljMkpIU09>

Meeting ID: 863 3627 2892 Passcode: 070729

There will be no charge for any of these events although any donations to the upkeep of this historic building will be gratefully received. Light refreshments will be available throughout the day on Saturday and on Sunday afternoon.

Bliss Chimney Sweeps

All appliances swept

Traditional brush & rod Power sweeping

Pots & cowls fitted

Repointing, lead work & roof repairs

Fully insured Certificates issued

Free friendly advice

07739 638431

Blisschimneys@gmail.com

We provide the best possible care for your feet

We've moved

Book your appointment:
01372 454583 bookhampodiatry@gmail.com



**Bookham
Chiropody & Podiatry Clinic**
Diagnosis, Expert Treatment & Professional Care
for Your Feet

**3 Hazel Parade, Penrose Road
Fetcham KT22 9PY**
www.bookhampodiatry.co.uk

Your visiting

PHYSIOTHERAPIST

SUE JUDD MCSP HCPC

40 years of experience.

All your requirements for elderly
mobilisation & post-operative
rehabilitation.

07834 227 999 sue-judd@sky.com



EDE BROS

REMOVALS • STORAGE • SHIPPING •

- Since 1926, Capel-based and family owned
- STRESS-FREE, local, national & worldwide
- Contact us for your **FREE** estimate...

01306 711293
edebros.co.uk



Home Counties Carers HELPING PEOPLE AT HOME
Live in Care

We are a close-knit family-run home care business that is committed to providing friendly and reliable carers, who genuinely care.

- Friendly, vetted trained and proven team
- 24/7 office support throughout the care package
- Experienced in caring for those with dementia

For more information and to arrange an assessment call us on
01483 224985 • 01737 354821
www.homecountiescarers.co.uk



P J Oliver & Son

Window cleaning

House & Garden Maintenance

Roof Repairs, Guttering

Painting & Decorating

Ground works, fencing, hedge cutting,
and tree work

Also Pest control

Call Phil on 07722 158 111
Email Oliviagarrett79@gmail.com



**YOUR LOCAL FARM SHOP
ON DENBIES WINE ESTATE**

farm shop deli plant centre

Open daily 9.30 to 5.30 (5 pm in January) and Sundays 10 to 5 Free parking

Local Produce, Seasonal Food, Plants

Own Grown Flowers from our Denbies Cutting Garden

FOOD FAIR AT OUR OCKLEY SHOP SATURDAY 23rd SEPTEMBER

We deliver veg bags and more to the local area on Tuesdays and Fridays
see www.vgfarmshop.com or email vegbag@vgfarmshop.com for details

LOCAL • NATURAL • ETHICAL 01306 880720 www.vgfarmshop.com

Going Wild in the Churchyard



Photographs clockwise from top left; Female and Male Common Blue, Gatekeeper, Painted Lady, Speckled Wood, Small Copper, Ringlet.

A sudden hot spell in July brought out the insects in force. In the new churchyard, where the grass has been allowed to grow this year, a spectacular emergence of butterflies occurred. Sixteen species of butterfly have been seen flitting from plant to plant, sipping nectar and engaging in mating displays. In the British Isles, fifty-nine species of butterfly can be observed regularly most years, two of which are migrants (Painted Lady and Clouded Yellow). In Mickleham churchyard it should be possible, throughout an entire year, which represents over a third of all butterflies to be seen in this country. That is no mean statistic and shows what can be achieved by

letting go a little and allowing nature to take sway. Of course, there are still short mown paths around the area for visitors to enjoy, and a generous margin for the new graves to achieve a balance. Allowing nature to flourish in a meadow is a complex subject and is not just a case of letting it get on by itself. The most crucial point is that a meadow must be periodically mowed, otherwise it will revert to scrub and then woodland. However, to be valuable for wildlife, there must be unmown areas in all seasons for the completion of lifecycles. Where do our butterflies (or a myriad of other insects) go during the autumn and winter? The answer is that they overwinter as eggs, larvae, pupae, or even as hibernating adults

in the unmown parts. In other words, the flowers of a meadow that are so pretty and eye catching in the spring and summer are but one part of the whole picture, known as 'habitat' or home for wildlife. To square the circle, as it were, a trial is taking place in the new churchyard. The aim is to mow and rake off one third each year in rotation, leaving two thirds as precious habitat for the continuation of species. In this way we hope the richness of the wildlife present will increase and diversify. The Eco Group will closely monitor and periodically review this approach.

There is much to write about, and regular updates will follow.

David Kennington

Bulk Order Discounted Compost

Mickleham and Westhumble Horticultural Society special offer to members!
(Annual Membership is only £5 per household.)

M&WHS invites all members to order manure and compost this autumn – perfect for putting your garden to bed over the winter and preparing your beds and borders for next growing season. We can get a significant discount by placing a bulk order.

Country Natural Composted Stable Manure	£3.50	80L bag
For mulching borders, veg beds, trees, and shrubs (covers approx. 2m ²)		
Melcourt SylvaGrow Multi-Purpose Compost (peat-free)	£6.70	50L bag
Ideal for raising seeds and cuttings, potting on, containers and as a growbag		

We require payment in advance to enable us to place the order, so please note that if you have not paid by the last order date, you cannot be included. Once we have placed the order, you will be sent an email confirming a date and instruction for collection from Mickleham Village Hall car park. Contact Lucy Adshead for an order form and payment details. lucyadshead@lapurple.co.uk

The last order date for Autumn delivery is **7th October**, aiming for collection **Saturday 21st October**.

Collection date can only be confirmed once the order has been placed.

Larry the Lamb welcomes refugees to the countryside



After months of preparation, the team at 'Just Bring Yourself' took two groups of refugee families out for a hike into Surrey County Council's Norbury Park on 15th July. It was a day of smiles, and that's despite the 'amber' weather warning. Funding to cover our core costs and get the project moving was provided by the Nineveh Trust. All-important transport was provided by Epsom College, who were eager to help these families living in the Epsom area.



We found ourselves in the full gamut of heavy rain, wind, sunshine, and drizzle throughout the day. Norbury Park provided a beautiful backdrop of meadows, mixed woodland, and a meandering river course. Our volunteer guides, Don and Anton, shared snippets of knowledge as we walked together. The highlight of the tour, as always, was Swanworth Farm, made possible through 'Farming in Protected Landscapes'. Swanworth is a place where children and animals connect. This time, Larry the Lamb was the star that made children smile from ear to ear. The families had lots of questions to ask farmer, Nick Bullen. The comparison of farming cultures was a hot topic, including why we don't buy a cow from the local farm for rearing at home to provide for the family.

Our rather worse-for-wear gazebo was having none of the weather, so we looked for a place of cover from the rain where we could sit for our

picnic. There are two mighty oaks standing in the Swanworth fields. These looked like an ideal canopy, so we opened the tarpaulin and placed various blankets for the families to sit on. It was a cultural choice to take shoes off and sit either on or around the blankets. One mother produced a huge pot that her family had been carrying in a bag the whole day. All the children placed themselves around the blanket as she served up a fragrant biryani. The children excitedly invited us to join them and soon, the mother was serving everyone on the tour with the most delicious home-cooked food, including dessert.

Occasionally, the food and blankets were visited by a bee or wasp and the automatic reaction of the children was to squash it. After explaining how valuable these pollinators are and how we must look after them, the children were more akin to using a leaf to usher the insects away. They had not heard why bees are so important for our food systems. The nearby blackberry bushes, with bumble bees at work, provided us with a chance to show them. One girl was perturbed that she had not been taught this at school as I explained how some pesticides can harm bees.



We then offered everyone the chance of writing or drawing something about their day. Some expressions were made in their own language. We hope to share these soon as the calligraphy is beautiful. After a reflection period, we played games in the Swanworth fields, running through buttercups and grasses. Then we asked everyone to help clear up, which enforced the Countryside Code that we teach during each tour. The long walk home, through paths laden with blackberries, wildflowers, birds and farm animals, was filled with conversation and

questions from our guests. The lovely drivers from Epsom College were there to meet us for the journey home.

This was the first of five events we are holding for refugees this summer. A lot of work and co-operation goes into days like these, but our team came away feeling moved and enriched by the happiness and enthusiasm of the children. Especially so thinking about the unimaginable experiences that forced them from their homes.

Photographs credit Just Bring Yourself CIC



A big thank you to our participants and everyone who made these tours possible, including the team at the Epsom & Ewell Refugee Network, part of the Good Company Charity who provide so much support for families in need. A special thank you goes to the weather, which displayed all four seasons in one day and which all our participants gloriously embraced.

Kirsten Johnson

There is a child in all of us...

Please come and enjoy an evening of childhood reminiscences, fact and fiction, in Westhumble Chapel on 22nd September at 7.30 pm. A mostly light-hearted evening, with a few slightly more serious memories. Refreshments will follow.

Tickets are £12 and can be ordered from me in advance. There may be a limited spaces available on the evening but, because this is a small, intimate venue, advance booking is strongly advised. All money raised will go to help St. Michael's Community Nursery buy some new equipment for the children's enjoyment and education.

Anne Weaver 01306 883932



Ukraine Community Appeal Update



Igor, Eduard's father in the blue t-shirt, after delivery.

The appeal leaflet sent out with the last magazine led to a very successful outcome. THANK YOU to all 50 or so people/households who raised some £5,500.

Village residents, the Ukrainian Popov family (Eduard, Tanya, and Lisa) have family friends, Dmitry and Ivan, who are in charge of active military units. This has enabled us to get vital support equipment directly to soldiers on the front line in Bakhmut and Kramatorsk. We have been able to send items specifically requested: sleeping-bags, field trousers with knee pads, camouflage shirts, tourniquets, abdominal wound dressings, protective goggles, boots, and gloves.

Two 'batches' of equipment have so far been dispatched, and most of the

money raised has already been spent. The equipment was driven by a London-based Ukrainian contact, to the Polish/Ukraine border, and then transferred by internal mail to Dnipro. From there, the items are collected by Eduard's parents, Igor and Natalya, driving 200 miles from their war-enforced, temporary home in Mykolaiv. They then deliver to Kramatorsk, a further 300 mile round-trip through numerous military checkpoints. Here, as the photographs show, the boxes are directly handed to Ukrainian troops, from the 28th Mechanised Brigade.

Doing it this way has ensured that the goods get to where they are intended, with minimal transport costs/overheads (only c7% of the total).

Most of the equipment sent is in short

supply generally, but we have also sent some specific items, including a computer tablet, and other goods for Ivan, a Unit Leader in Bakhmut. At 6ft 7", he has struggled to get clothing to fit. He has been injured twice and as a result lost much of his equipment.

Our community contribution has been greatly appreciated by these Ukrainian troops, not just in terms of the supplies themselves, but also the morale-raising effect of the goodwill and support it demonstrates, from our small part of the UK.

There is a dedicated WhatsApp link for this appeal. For updates, more information and photos, ways of donating etc, please contact Will Dennis, will@micklehamhallfarm.co.uk

Mark Day

June Bride

As promised last issue, a photograph of Bunty Robotham and Thomas Howe, childhood sweethearts, married at St Michael's on 3rd June. Our warmest congratulations.

To the right, some of the results of a flower arranging workshop, arranged by Alison Wood, led by Jane Fleming, mainly for those involved in decorating the church. We learned how to prepare, handle and arrange the flowers. Most of the arrangements featured used garden flowers and foliage. Our thanks to the Siberry's for hosting in their beautiful garden, and of course to Alison and Jane.

Charlotte Daruwalla



A Confidential & Safe Space to Talk

Counselling • Mind & Body Healing
Reiki • Relax into Nature Sessions
Face to face/Online/Outdoors/Distance

Supporting you with compassion and understanding through challenging times



Call Judith Cobby
on 01306 882229
or 07790 614448

www.healing-inspiration.co.uk

TIM LANGLEY

Experienced craftsman

ANTIQUE RESTORATION
CABINET MAKING
FRENCH POLISHING

Free estimates collection & delivery
01372 457700 07960 486455
tmlangley@virginmedia.com

Rowlatt Garden Services

RGS

EST.1985

**Gardens large and small
we maintain them all**

All aspects of private and commercial garden
and estate maintenance landscaping undertaken
Fencing grass & hedge cutting

Telephone: 01737 841524 Mobile: 07887 838666
References available upon request

Julie Watts Family Law



AN AFFORDABLE AND EXPERIENCED PROFESSIONAL
ALTERNATIVE TO TRADITIONAL SOLICITORS

• Divorce • Arrangements for children • Finances
• Court Proceedings

PROUD TO PROVIDE A DIFFERENT KIND OF SERVICE

• Affordable fees • Straight-talking advice
• Practical real support

Contact me for a consultation
07808 572157 juliewattsfamilylaw.co.uk

Mike Palmer

Electrical Services
Part P registered electrician



From additional lighting and sockets
to complete rewires

Fully insured Registered with the NICEIC

07866 930483 mike@mikepalmer.biz
Boxhill Way, Strood Green, Betchworth RH3 7HY

Phil's Mowing Dorking

Regular Lawn Mowing
General Garden Maintenance
Lawn Care & turfing
Hedge Trimming
Pressure Washing



phil@philsmowingdorking.co.uk
07905 160 765



KING WILLIAM IV

Dear Friends & Neighbours

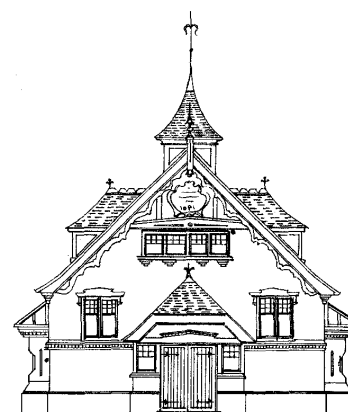
What an incredibly disappointing summer thus far weather-wise. I write this during the second week of August, so I am hoping we have an Indian Summer. There are only a few 'Sunday afternoon music in the garden' events to go, so please try to come along to one of them, 4.30 pm start.

Alana, my Swedish work-experience student, has returned to Stockholm after a few weeks with us. She loved the pub, village and customers and is looking forward to returning soon.

As we start looking to autumn, Kat and I will be working to revamp our menu to bring in the new season. My how the time flies, now our 12th year at the King William!

Hope to see you very soon, Eamonn and Anne

Byttom Hill Mickleham 01372 372590 www.thekingwilliamiv.com



Mickleham Village Hall available for hire

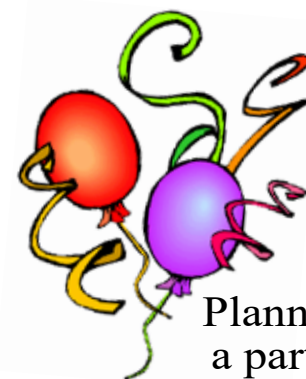
Hall bookings
Table & chair hire

Deanna Darnell

07790 941 601

bookings@micklehamvh.co.uk

www.micklehamvillagehall.org.uk



Equipment
available for hire

China ~ Cutlery

Electric urn

Equipment hire

Mary Banfield

01372 373912

admin@micklehamvh.co.uk

Community Directory

BOX HILL AND HEADLEY HEATH (National Trust) 01306 888793
Lead Ranger – Meredith Westall (Merry) meredith.westall@nationaltrust.org.uk
07811 088097

Friends of Box Hill – Chair Lyn Richards 01737 842889
lyn@mra.uk.net

BOX HILL SCHOOL 01372 374814
Headmaster – Cory Lowde HMPA@boxhillschool.com

DORKING CRICKET CLUB
Chairman – Andrew Homewood homewooda@hotmail.co.uk

DORKING GROUP OF ARTISTS
Exhibition Secretary – Patricia Booth patriciabooth100@gmail.com

DORKING LAWN TENNIS & SQUASH CLUB
Maddy Halliwell madeline_halliwell@hotmail.co.uk

DORKING RUGBY CLUB 07789 176417
Jim Evans jim@flintcottage.net

THE GARDEN SHED 07759 646353
Pauline Davis paulinedavis33@icloud.com

JUNIPER HALL FIELD CENTRE 01306 734501
enquiries.jh@field-studies-council.org

Head of Centre – Maddy Jones m.jones@field-studies-council.org
Friends of Juniper Hall – Suzy Hughes 01483 281935
suzy@suzyhughes.co.uk

MICKLEHAM CHILDREN'S PLAYGROUND ASSOCIATION 07767 891772
Secretary – Sarah Parfitt sarah@sarahparfitt.com

MICKLEHAM CHORAL SOCIETY www.micklehamchoral.org.uk
THURSDAYS 8 - 10 pm – MICKLEHAM VILLAGE HALL
Conductor – Juliet Hornby 01372 373106
Secretary – Mike Benson secretary@micklehamchoral.org.uk

MICKLEHAM OLD BOX HILLIANS FOOTBALL CLUB 01372 374745
Secretary – John Atewell

MICKLEHAM PARISH COUNCIL www.micklehampc.org.uk
SEE WEBSITE FOR MEETING DATES 01372 379381
Chairman – Rev'd David Ireland rev.ireland43@btinternet.com
clerkatmpc@gmail.com

Parish Clerk – Feena Graham

MICKLEHAM PARISH MAGAZINE 07933 300744
Co-Editor – Charlotte Daruwalla editor@micklehammag.co.uk

Co-Editor – Jan Budleigh 07780 976301
editor@micklehammag.co.uk

MICKLEHAM VILLAGE HALL 01306 882547
Chairman – Ben Tatham chairman@micklehamvh.co.uk

Bookings Manager – Deanna Darnell 07790 941601
bookings@micklehamvh.co.uk

ST MICHAEL'S CHURCH

*within the United Benefice
of Leatherhead and Mickleham*

INCUMBENT — The Rev'd Will Perry 01372 372313

PARISH PRIEST

The Rev'd Dr Sandra Faccini * 01372 417664
07763 488961

parishpriest@micklehamchurch.org.uk

* Main working days: Monday, Tuesday and Sunday

CHURCHWARDENS

Timothy Mathieson 07555 597163

TimothyMathieson@aol.com

Catherine Diffey 07790 473167

Mickleham@diffey.me.uk

PARISH ADMINISTRATOR

Alison Wood 01372 376443

admin@micklehamchurch.org.uk

PCC SECRETARY

Caroline Jones 07504 271376

pccsecretary@micklehamchurch.org.uk

TREASURER

Richard Siberry 01372 375303

pcctreasurer@micklehamchurch.org.uk

ORGANIST

David Fishwick 0208 7732420

organist@micklehamchurch.org.uk

WEDDINGS CO-ORDINATOR

Elaine Machin 01372 724972

weddings@micklehamchurch.org.uk

BAPTISMS CO-ORDINATOR

Vickie Leney 01306 884054

baptisms@micklehamchurch.org.uk

FUNERALS CO-ORDINATOR

Carole Brough Fuller 01737 842918

funerals@micklehamchurch.org.uk

WEBSITE MANAGER

Kelvin Pritchard 07770 280410

website@micklehamchurch.org.uk

PCC ECO GROUP

David Kennington 01372 362309

davidkennington144@gmail.com

www.micklehamchurch.org.uk

*For information about services for other
denominations see website pages.*

Search on 'Churches Together Mole Valley'

REGISTERS

WEDDING

Friday 11th August Billy Chadwick and Evie Hamilton

DEATH

Monday 3rd July Ashes of Suzanne Dwyer interred in
Garden of Remembrance

BAPTISMS

2nd July Cleo Didi Rose Faccini-Myatt, daughter of
Timothy Joseph Faccini and Margaret Clare Myatt,
christened by grandmother Sandra.

30th July Ivor Mitchell, son of Struan Mitchell and
Hannah Brewer.

CALENDAR SEPTEMBER

2	Saturday	10 am to noon	Coffee morning Westhumble Chapel
3	13th SUNDAY OF TRINITY	10 am	Family Service. Blessing of new frontals and formal thanks to the volunteers.
10	14th SUNDAY OF TRINITY	10 am 11.30 am	Holy Communion Matins at Westhumble Chapel
<i>Copy deadline</i>			<i>for October parish magazine</i>
14	Thursday		Thursday morning Bible Study Group restarts page 2
15	Friday		Heritage Weekend 15 - 17 th page 7
16	Saturday	2.30 - 4.30 pm 9.30 am - 4 pm	M&W Horticultural Society Autumn Show page 21 Garden Shed tool sharpening at Autumn Show
17	15th SUNDAY OF TRINITY	10 am	Morning Worship
18	Monday	3 pm	Tea @ 3 page 2
21	Thursday	3.15 - 4.45 pm	Messy Church at the village hall page 5
22	Friday	10 am - 1 pm 7.30 pm	Macmillan Coffee Morning at Chapel Farm 'There is a child in all of us' Westhumble Chapel page 10
23	Saturday	9 - 10 am	Men's breakfast at the Stepping Stones
24	16th SUNDAY OF TRINITY	8 am 10 am 3.30 pm	BCP Holy Communion at Westhumble Chapel Holy Communion 'Fun and Games' at Westhumble Chapel page 25
26	Tuesday	7.30 pm	Garden Shed talk at The Stepping Stones page 23
30	Saturday	9 - 10 am	Women's breakfast at the Stepping Stones

Dates for your diary

Mid - September to end of November
Sunday 1st October

Saturday 7th October
Friday 13th to Sunday 15th October
Saturday 14th October
Sunday 15th October
Wednesday 18th October



Alpha Course
Harvest Workshop followed by Family
Harvest Service
Deadline for compost order
Dorking Group of Artists at Denbies
Sausage and Skittles at village hall
Italian Ensemble performing
Garden Shed visit to sculpture park



MEMBERS OF THE PAROCHIAL CHURCH COUNCIL

Sarah Blake	Elaine Machin
Mark Day	Tim Mathieson
Andy Diamond	Beverley Mehta
Catherine Diffey	Kelvin Pritchard
Caroline Jones	Richard Siberry
Vickie Leney	

ST MICHAEL'S CHURCH COMMUNITY GROUP COMMITTEE

Mark Day	07852 117249
	mickleham@hotmail.com
Denise Darling	denisedarling4@btinternet.com

Andy Diamond	07789 775354
	diamo1@hotmail.co.uk
Kelvin Pritchard	07770 280410
	Kelvin@wan2lan.com

ST MICHAEL'S CHURCH COMMUNITY GROUP HELPING HANDS INCLUDING FOOD FOR FRIENDS

A service for all residents of Mickleham and Westhumble

Examples of services we offer:

- Essential shopping / collection of prescriptions
- Changing library books
- Small tasks: eg changing fuses, altering clocks etc
- Dog walking
- Visiting / befriending
- Home-cooked meals for local families going through difficult times

Requests to:

Will Dennis 07903 842674 wddennis@icloud.com
(who can put requests onto WhatsApp)
Mary Banfield 01372 373912 mgbbmw@aol.com
Frances Presley 01306 882473 jasempres@gmail.com

*More helpers needed – please contact
Frances if you can spare some time.*

Community Directory

Continued from page 13

MICKLEHAM & WESTHUMBLE BADMINTON CLUB
Membership Secretary – Sarah Blake tinkerbelle0044@hotmail.com

MICKLEHAM CRICKET CLUB
Membership contact Will Dennis 07903 842674
will@micklehamhallfarm.co.uk

MICKLEHAM & WESTHUMBLE HORTICULTURAL SOCIETY
Chairman – David Kennington 01372 362309
www.surreycommunity.info/mwhs or davidkennington144@gmail.com

MICKLEHAM AND WESTHUMBLE LOCAL HISTORY GROUP
Chairman – Ben Tatham 01306 882547
ben@thetatham.co.uk or www.micklehamwesthumblehistory.co.uk

MOLE VALLEY DISTRICT COUNCIL 01306 885001
Cllr Chris Budleigh 07801 520059
councillor.budleigh@molevalley.gov.uk
Cllr Abhiram Magesh 07765 126399
councillor.magesh@molevalley.gov.uk
Cllr Leah Mursaleen-Plank 07803 353352
councillor.mursaleen-plank@molevalley.gov.uk

THE ARTS SOCIETIES (FORMERLY NADFAS)
Betchworth – Mary Venning 01306 883301
Dorking – Sue Tatham 01306 882547
Leatherhead – Sarah Sheridan 01306 883699

ST MICHAEL'S CHURCH OF ENGLAND (A) INFANT SCHOOL 01372 373717
info@stmichaels-dorking.surrey.sch.uk
Friends of St Michael's School – friendsofstmichaels2017@gmail.com

ST MICHAEL'S COMMUNITY NURSERY
WEEKDAY MORNINGS – MICKLEHAM VILLAGE HALL
Supervisor – Hilary Budd 01372 361021
stmichaelsnursery@btinternet.com

SURREY COUNTY COUNCIL 03456 009 009
Councillor – Hazel Watson 01306 880120
hva.watson@btinternet.com

SURREY WILDLIFE TRUST 01483 795440
info@surreywt.org.uk

TREE WARDEN
David Kennington 07546 952521
davidkennington144@gmail.com

WESTHUMBLE NEIGHBOURHOOD WATCH
Lead Co-ordinator – David Allbeury 07860 227451
westhumble.neighbourhood.watch@gmail.com

WHATSAPP GROUP
Will Dennis will@micklehamhallfarm.co.uk

ADDITIONAL CONTACT INFORMATION
CITIZENS ADVICE
Dorking – Lyons Court 01306 732302
Leatherhead – Swan Mews High Street 01306 732301
CRIMESTOPPERS 0800 555 111
POLICE Non-emergencies 101

(often quicker to make online report) <https://report.police.uk/>

Neighbourhood Specialist Team – Dorking Rural East
General enquiries molevalley@surrey.pnn.police.uk

NHS Urgent and emergency care 111

Babysitting by local youngsters

Those listed below are at least
14 years old.

Gracie Owen **07790 900649
Annabelle Prosser* 07443 634179
Maisy Presley*** 07720 657327
Martha Pearce 07514 080005
Rory Lee 07503 702517
Ellie Kim 07773 395575
Chelsea Edwards 07834 695816
Edward Moran 07740 088124
Daisy Armitage **07580 473812
Olivia Newby 07703 110363
Eva Lanceley **07903 630567

* Holidays only
** Parent's mobile number
***Weekday evenings only

If you would like to add your
name to this list please get in
touch with
editor@micklehammag.co.uk
No Charge

Advertising in the Parish Magazine

Please contact
MPMads@micklehammag.co.uk
Small ads: a nominal fee is
charged for ads where items or
services are bought or sold.

We have been advised to print
the following reminder:
We cannot guarantee the
quality of the goods and
services offered by our
advertisers.



Alan Malcolm Edwards 1930 - 2023

Mark Hammond, Alan's nephew writes:

Alan Malcolm Edwards was born in Croydon. He grew up in Surrey and Sussex, living his early years in Littlehampton and Banstead. He also spent the war years living in Bideford returning to London to start his career in the post-war years. Initially he worked as a cartographer, ultimately retiring from British Petroleum, having worked initially in London and then throughout the United Kingdom, completing environmental impact surveys, predominantly on bird life, which was a passion of his. He retired to pursue his various interests while living in Westhumble.

Early in his career, he married Gwen Edwards (Hammond), continuing to live predominantly in Westhumble. He was known for his deep knowledge and love of gardening, specifically for alpine flowers and crocuses, to name just a few. Together with Gwen, he travelled throughout Europe to find rare specimens.

In addition, Alan had other interests as diverse as supporting a variety of wildlife trusts through to his lifelong enthusiasm for steam engines, developed from when he was a boy travelling down to Littlehampton, on steam trains driven by his grandfather. He maintained lifelong friendships with close friends and together with Gwen, he supported the elderly in Westhumble. In addition he worked to preserve wildlife and land through various local initiatives.

Alan moved to Felbury House Care Home in Holmbury St Mary, Surrey initially for respite care and then permanently in July 2019. He fondly referred to this as his 'home', a wonderful acknowledgement of his time there and the care he received.

Alan passed peacefully in his sleep on 3rd July 2023, a true gentleman to the end and not without his dry humour and wit.

He is survived by his nephews: Mark of Woking, Surrey and Nicholas of Auckland, New Zealand, and his sister-in-law: Anne of Tampa Bay, Florida, United States. Sadly Gwen passed

away in 2017 after a period when Alan had cared lovingly for her while she was at home and then in a care home. He will be sadly missed by Mark, Sam, and Scarlett and all those who knew and loved him. May he rest in peace.

Judy Kinloch remembers:

Alan was President of the Mickleham & Westhumble Horticultural Society for all the years that I held the role of Chairman. Before I knew about his expert credentials I used to go to our village shows always with an eye out for his entries. His floral displays were superb and his vegetables beautifully presented. I think Alan was the only member who took the trouble to include varieties on his entry cards, nor did he ever fail to support our shows. His contributions lifted our standards and aspirations.

Later, as I got to know Alan (and his wife, Gwen) and was privileged to be shown around his garden on a number of occasions, his knowledge and enthusiasm for plants was always apparent, especially those he had raised from seed, many of which needed specialist care and attention. We shared a love of paeonies and I remember his telling me how many blooms he had coaxed from one plant! Alan was the most kind and generous person, both in passing on his knowledge and giving away seedlings or bulbs he had raised. I have a number of plants he gave me that flourish in my garden. These are particularly precious as they continue to remind me of him. My favourite is *Salvia* 'Royal Bumble' which I can lovingly recommend, and I know more will already be spreading around our community.

Liz and Mike Weller were great friends of Alan and Gwen. Liz remembers Alan telling them that his father was a keen gardener who inspired Alan's lifelong interest in horticulture. He had interesting memories of growing up during WW2 and the experience of "digging for victory".

Alan was a true, kind gentleman in every sense, generous and well respected by everyone. He and Gwen



were devoted to each other and had a long and happy marriage.

Alan had an extensive knowledge of horticulture and was an RHS judge, both at Wisley and Chelsea. He spent many motoring holidays with Gwen in Europe exploring specialist plant areas. I remember on one occasion telling Alan that we were going to Corsica, whereupon he invited Mike and me to his greenhouse to show us native plants from there. Even in the depths of winter, Alan and Gwen would arrive to see us with a small bunch of different flowers collected from their garden. They often opened their garden to various horticultural groups.

Alan and Gwen were keen walkers and a familiar sight to other local walkers, accompanied by Digby, their last beloved Jack Russell terrier, forever urging them on and curtailing their stops to chat.



Community News

Welcome to Erin and Danie Olivier, their sons Joshua and Daniel and various pets, who have moved into Mickleham. Also to Alice and Will Dubbins who have moved to Burney Road from Shepherds Bush.

Farewell to Michael, Charlotte and David Bridge who have moved from Burney Road to Exmouth.

Seasonal Sightings

Remember to send in your seasonal sightings please, so that we can build a local record over time.

John Parr 1948 - 2023

John was a Mickleham resident up to the nineties but was still familiar to many, as a regular at The Running Horses until recently. At his funeral in June, five eulogies were given, a testament to his popularity. Here are extracts from three.

John Leverington writes: I had the pleasure, real pleasure, of knowing John Parr for about 60 years. He was my best friend. We met at school, Eastbourne College, at the same 'house' (Wargrave) where he was annoyingly better than me at every sport. We shared many happy times at school, sliding down the stairs on a laundry basket comes to mind. John lived with his parents in Fernshaw Road, Chelsea where I visited often. At various times John was into photography - and fish. One of his favourite types of fish (he had many fish tanks in his bedroom) was one that ate other fish. John thought this was great.

In 1972, I emigrated to Australia (where I still live). In 1974, my wife, Jen, and I visited the UK and caught up with John. When our first child, Matthew, was born in 1975, we had no hesitation in asking John to be Matthew's godfather, a role that he readily accepted. In 1999 on another

visit to the UK. we met up with John and despite there having been 25 years since John and I were last together, it seemed like no time at all. We were just as silly together as we had been in the past.

Tally, John's daughter, spoke of many special moments she had shared with her dad. Dad had a passion for people and having spoken to many of you here since Dad's passing, the one thing that I keep being reminded of was how he was genuinely interested in his friends, what they were doing, their new adventures, or new art that had been purchased, which he couldn't wait to see. He had a real love for art! Almost as much as his love for people which was often manifested in buying copious rounds of drinks. But he also relished the international trade missions he did for many years, taking different people to an array of countries, Iran, Saudi Arabia, India, Egypt, Qatar, Turkey and of course Libya whilst under the rule of Colonel Gaddafi. On a number of the Libya trips, I travelled with him and worked alongside dad, Pauline and Susie. Given the alcohol ban there, the reception we hosted at the ambassador's residence was always a highlight, with swift quaffing of the red stuff.

Francesca Cox spoke movingly about the strong friendship between the Parr and Cox families, in additon to these anecdotes. John was a very bright



thinker and enthusiastic entrepreneur who became a business partner. Together we pioneered the first ever broadcast interactive television game shows in the UK and Sweden. We worked long into many nights here and in Stockholm, invoking the wrath of Stephen Spielberg and enthusiastic support from the Natural History Museum through his friend Frank Howie.

John was a hugely active contributor to village life, chairing almost every committee in the parish from time to time. He pioneered the A24 action committee, virtually hand painting the single lane white lines on the Mickleham Bends, latterly known as the Parr bars.

Against All Odds

As the 22nd July approached, the stormy weather cast a shadow of uncertainty over this year's local outdoor music festival. The event had taken many months to organise, and we had meticulously planned for an open-air extravaganza. But, as so often happens in the UK, Mother Nature had her own ideas. With heavy rain and gusty winds predicted, we were forced to make the tough decision to move the event indoors for everyone's safety. As if battling the weather wasn't enough, a rail strike threatened to deter people from travelling to the festival. Then, a band was forced to drop out last minute, due to illness.

Thankfully, the passion of music lovers prevailed. People came, in their droves. The attendees, artists and volunteers all demonstrated an incredible spirit of community and camaraderie. Their determination to make the event a success created a lovely atmosphere of warmth and togetherness.

The weather may have been gloomy outside, but the vibe inside the festival was fantastic, thanks to our sound engineer Tom Lawrenson and the outstanding performances by our brilliant artists and performers. All had graciously donated their time and talent in support of our chosen charity. A big thank you to: The AMD Project,

Funky Town, Sam Davies, The CoHorts and Back in Business, and not forgetting Anthony, who miraculously turned up with his saxophone and filled our empty band slot. We even had a flashmob choir! The "A24's" took everyone by surprise when they suddenly leapt to their feet and started harmonising a fabulous rendition of 'Barbara Ann'. Everyone's dedication to delivering top-notch entertainment resonated deeply and we are incredibly grateful to them all. Also to Tina at The Stepping Stones for sponsoring the event and providing the venue free of charge.

Festhumble'23 not only matched the fundraising success of its predecessor

Mickleham Choral Society Hot Summer Swing

The posters promised a Hot Summer Swing and they didn't lie. It was sticking-to-seat hot; it was four days from midsummer and boy did the band swing!

In a new venture this year, the Mickleham Choral Society joined forces with the Milestones Big Band for the summer concert. It was held in the Mickleham Village Hall car park, which had been converted by gifted choir members into a Latin American fiesta with a busy bar, bunting and flowers.

The programme started with the band and choir *Chattanooga Choo Chooing* us into Kurt Weill's cheerful ditty *Mack the Knife*, about a cutlery fixated serial

killer, before restoring calm with the beautiful and soothing Charles Trenet song *La Mer*. The choir sang the lyrics in French until the band joined us and we swung, oh so seamlessly into English, upping the tempo and continuing into *Fly me to the Moon*. In the next number the choir's women assembled for the acapella *Bring Me Little Water Sylvie*. This is a plantation workers' song with body percussion, designed perhaps to capture the evening's midges in a syncopated rhythm. This was followed by more fun with Lewis Carroll's *Jabberwocky* set to music with accompanying instruments. It was then time for the band to take over and wow



A wonderful Italian Ensemble from Sinalunga in Tuscany are returning to perform again, in a concert at St Michael's Church, on the evening of Sunday 15th October. Not to be missed. More details in the next magazine.

(Festhumble'19), but against all odds, it surpassed it. The Meeting Room, beneficiary of the funds, has expressed immense gratitude for the significant impact this event had on their cause. A total of £1,777.74 was raised on the day and we are very grateful to all the businesses and individuals who donated an amazing array of wonderful prizes for our raffle, tombola and silent auctions, all of which helped this fundraising effort immensely.

On a personal note, I would like to thank the Festhumble Committee (Del, Kay, Carol, John and Mark) for their

dedication and many months of hard work. Without them the event simply would not have happened. Perhaps the true magic of Festhumble'23 lies in the unity and community spirit displayed by everyone involved. I thank you all for your unwavering support and generosity, and for helping us to make Festhumble'23 a day to remember.

Ange Treanor

Photographs by Bogdan Schiteanu



the audience with such swing favourites as *Birdland*, *Little Brown Jug* and Miles Davies's *Four*.

During the interval the performers joined their guests at the tables to scrounge remnants of the picnics. Then, suitably fortified, the choir's tenors and basses turned Billy Joel with a hearty rendition of *The Longest Time*, with us all joining in for the Beach Boys' *Barbara Ann* and two Abba songs. The band retaliated with *It Can Happen to You*, *Sweet Home Chicago*, *Jazz Police* and Jungle Book's *I Wanna Be Like You*, which encouraged some excellent jiving from members of the audience.

After votes of thanks and the raffle, the evening ended with a bang as the band played *Sing, Sing, Sing*. This included fantastic solos from drummer Nick. The choir spontaneously left their seats to dance with gay abandon on the lovely, dusty, sharp stoned car park gravel. It was a very happy, very hot and very successful evening.

Dina Stovell

Superb Local Pubs

Tina at The Stepping Stones is to be commended for the numerous events she hosts, Festhumble being the latest in a long line. We are lucky to have such a welcoming pub and team locally. As a reader has pointed out, we have not one superb pub in the villages but three!

The Running Horses were National Winners of The Pub and Bar awards in July 23 and have recently received 'The Best Burgers in Dorking' award from Restaurant Guru.

The King William featured in national newspaper 'The Guardian' earlier this year as providing the best Sunday roast in the whole of the southeast. Not to be outdone, The Running Horse got The Brakspear best Sunday roast award. And all on our doorstep.

Pre-loved
& vintage
CLOTHING
SALE
LADIES - MENS - CHILDREN

Join us on
Saturday
7th October
10 am – 5 pm
Mickleham
Village Hall



Fabulous designer
& Top Branded
CLOTHING &
ACCESSORIES
IF YOU WOULD LIKE TO BOOK A
STAND FOR THIS EVENT, PLEASE
CONTACT DENISE:
07767 477 978
denise@opulent-events.co.uk

FREE ENTRY

TEA, COFFEE & CAKES

CURCHODS

INCORPORATING
John Wadsworth

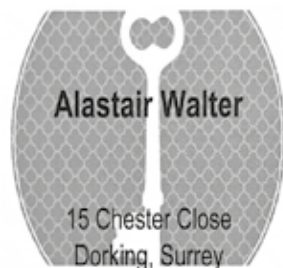
John Wadsworth joins the Curchods family

After 27 years in Bookham, John and Amanda Wadsworth have stepped into well-deserved retirement and John Wadsworth estate agents has joined the Curchods family.

If you are thinking about selling or letting your property, contact Curchods Bookham
T: 01372 450500 E: bookham@curchods.com www.curchods.com



Cole and Walter Lock & Key



07890 609194 alastairwalter123@btinternet.com
Supply and installation of all locks
Residential and Commercial

DORI VANA PLUMBING

Bathroom renovations and
all plumbing services

07977 220465 / 01306 887282
dvanaplumbing@gmail.com



GB PLASTERING

Established 1999

We offer all aspects of plastering from
small repairs to new builds
All undertaken by skilled plasterers, respecting
your home and property
Full insured Westhumble based
07970 591962

All your annoying & odd jobs fixed fast

Are you: struggling to get your odd
jobs done?
lacking the necessary skills?
struggling to find the time?
lacking the correct tools?
struggling to find a reliable
person?



Mickleham based...
07939 131593
help@toolboxtony.co.uk

see toolboxtony.co.uk for more information on services offered

Drought Tolerant Plants

As summers become drier and water increasingly more precious, selecting plants that can cope with the change in our climate is becoming a vital consideration in garden management. Choosing the best drought tolerant plants helps to cultivate a low-maintenance garden that still looks colourful and full of life. We were joined by Steve Edney at our July Garden Shed presentation, who shared his experience of growing plant varieties that are adapted to these conditions. He is a twice Gold Medal winner at Chelsea and Hampton Court, as well as receiving Best In Show at Chelsea. Steve is also part of RHS Trial Team, recommending and participating in trials to evaluate plant performance; more of that to follow. Previously a Head Gardener at Salutation Gardens, currently he and his partner, Lou, own and run their own nursery. His passion is looking for plants that will replace our current cottage garden ones, as the latter's performance has diminished due to changes in our climate.

One of Steve's recent assignments was to create the first new garden in 1,000 years at Canterbury Cathedral. Following reconstruction of the west end of the building, his brief was to create a garden that represented the past while also looking to the future. Those with experience of a walled garden will have sympathy with the

conditions he was working with, as heat radiates from the cathedral walls. Also, he discovered the whole area was full of building material and rubble beneath the lawn. Steve took inspiration from world-wide drought zones including the Mediterranean, Mexico and South Africa and planted more than 6,000 bulbs to provide colour throughout the year, along with perennials including *Asphodeline lutea*. This plant is native to north Africa. It has long poker-like upright stems with yellow flowers and attractive seed heads. Also included were *Calamintha nepeta* (catmint) with white flowers and which doesn't spread, and *Allium angulosum* (mouse garlic), a summer flowering bulb and not as tall as spring flowering alliums.

While working at the cathedral, Steve and Lou were developing their own project to create a private nursery. No Name Nursery in Faversham, Kent was just a three-acre field, purchased in 2019. It now has 1,500 different cultivars planted in a 100 foot border, and 2,500 trees and hedges. All their plants are trialed and evaluated to ensure they are drought tolerant before being offered for sale in the on-site nursery. Steve suggested most plants can cope without water for 4-6 weeks, which had much of the audience fidgeting in their seats at the thought of the cost of a replacement.



However, he believes that if planted in the right place and mulched correctly, plants will flower, although flowers may fade more quickly.

Finally, Steve touched on his work with the RHS, and discussed a trial currently underway to assess which varieties of baptista are 'garden worthy'. Long-lived and tolerant of very cold and dry weather, baptista have attractive seed-heads and produce flowers in a range of colours. In Steve's view, they are a perfect alternative to lupins, which are struggling in the southeast as they like acid soil. The trial will continue for three to four years and as these plants have been making an appearance at Chelsea, it's likely they will become popular in our gardens soon.

Steve's presentation was full of plant recommendations, many of which are particularly relevant to us as he works with the same soil conditions we have in our area. Unfortunately, due to space limitations, we can't list them all here but if you are interested, please do visit our Garden Shed website where you will find full details: www.gardenshed.club

Cathy Lee

MICKLEHAM & WESTHUMBLE
HORTICULTURAL SOCIETY
WWW.MWHORTSOCIETY.ORG

**AUTUMN
SHOW**

FLOWERS AND PRODUCE

SATURDAY

16TH SEPTEMBER

MICKLEHAM VILLAGE HALL

2.30 - 4.30 PM

**TEA & CAKES, PLANTS,
OTHER ATTRACTIONS**



The Garden Shed
bring you the opportunity
to sharpen your garden
tools and more



at the Autumn Show

Sharpening Service open from
9.30 am - 4 pm

Garden shed has arranged 10% discount

Prices start at £4.50

See our website for details and prices

www.gardenshed.club

CARPET REVIVAL REVIVING CARPETS & UPHOLSTERY IN SURREY

Covering Dorking and
all surrounding areas

We clean to a professional standard using
eco-friendly chemicals and the latest equipment.
Offering a thorough survey, clean and
customer satisfaction. Certified and insured.

Call 01306 740035 / 07747 122128
or visit www.carpetrevival.co.uk
to book a free home visit/quotation

STEVE LAWRENCE

PLUMBING HEATING ELECTRICS
Boiler installation, maintenance and repair

Based in Mickleham Local references
30+ years' experience

07760 266718
stevenlaw37@hotmail.com



Vivien Cresswell Made-to-measure Soft Furnishings

Curtains Roman Blinds Cushions

Extensive range
of fabrics
01737 843858
info@cresswellcurtains.co.uk
www.viviencresswell.co.uk



Joseph
De Decorators
• Painting • Decorating
• Wallpapering • Plastering • Tiling
Mickleham based
40 years' experience
01372 372331 07973 358 932

Domestic Appliance Repairs

30 years' experience repairing and installing
all gas and electric domestic appliances



- Cookers, Microwaves
- Dishwashers
- Washing machines
- Fridges / Freezers
- Water coolers
- Coffee machines
- Tumble dryers

Contact: Andy 07895 719 706
andy@kirksdomestics.co.uk



GARDENS HOMES

ANDREW CLARK 07800 796 737

ALL GARDEN MAINTENANCE • PAINTING & DECORATING • HANDYMAN

Dorking Pest Control Services

Local Authority Approved Contractors



Our Services include: Wasps, Bee Swarms, Hornets, Rats, Mice,
Squirrels, Fleas, Flies, Ants, Cockroaches, Bed Bugs,
Rabbits, Moles, Foxes and Deer



• Domestic, Commercial and Industrial • Contract Work • Preventative Control Programmes

Experts in pest control throughout Surrey

Office: 01306 743001 Ivor: 07710 117491 Chris: 07971 519415

www.dorkingpestcontrol.com

CRYPTIC DELICACIES

Last month's theme answers could
be variously combined into PULP
FICTION, HAIRSPRAY, SATURDAY NIGHT
FEVER, and GREASE, with the golden
square letters thus being able to make
TRAVOLTA, that famous John having
starred in all of them (as well as making
a big splash up here last April when he
popped into Morrisons in Fakenham
to buy some steak. I decided that that
fact was a bit niche so exercised my
renowned shrewd judgement in not
including it in the puzzle).

**20 The beginning of EVERY day holds
an intimation of excitement (5)**

FEVER

When you first look at this clue there are
various things that pop out as possible
ways to attack it. 'The beginning of
Every' could be E. 'day' could be Mon,
Tue, Wed, Thu, Fri, Sat, Sun. 'holds'
could mean that a synonym for 'day'
surrounds 'an'. But, it's all simpler than
that: 'holds' is a hidden word indicator,
and the required word can be found
held within all the letters that precede
'holds', as marked in red above.

**12 In a different way than I will go to a
soldier's home (7)**

ANTHILL

'In a different way' tells you to anagram
THAN, 'I will' = I'LL - ignoring punctuation
as usual and you get ANTHILL (when the
word 'soldier' comes up in a cryptic
crossword, I always think of ants).

**13 It sounds like long-eared beings
look to God to provide a fix for their
beehive (9)**

HAIRSPRAY

'Long-eared beings' = hares, sounds like

HAIRS, 'look to God' = PRAY, and the
beehive in the definition is the famed
hairdo of the '60s (also apparently
known as a B-52 because it looks like
the distinctive nose of that bomber).

**19 Though hiding friend, gave a sign
of willingness to join the attack (5-2)**

TALLY-HO

'Though' can be abbreviated to THO,
'friend' = ALLY which is hidden inside -
and the unusual letter count of (5-2) is
also a very big clue.

**29 Gives away someone who had an
apple shot off their head? (5,2)**

TELLS ON

William Tell shot an apple off the head
of his male offspring who could be
described as the TELL SON (admittedly
the describer would be being a bit
obtuse in their delivery, hence the
question mark at the end of the clue).

**2 Spooner delivered hot beverage as
a way to get your limbs moving round
very slowly (3,3)**

TAI CHI

Reverend William Archibald Spooner
(1844-1930) is beloved of cryptic
crossword compilers even though
he was not entirely thrilled with the
reputation for muddling words that led
to the coining of the term 'Spoonerisms'.
Obscure fact of the day is that he was an
albino. In this case, the 'hot beverage'
is 'chai tea' which when Spoonerised
gives TAI CHI.

**27 It sure is sloppy when an
Inexperienced driver is held by his
future best friend (4)**

PULP

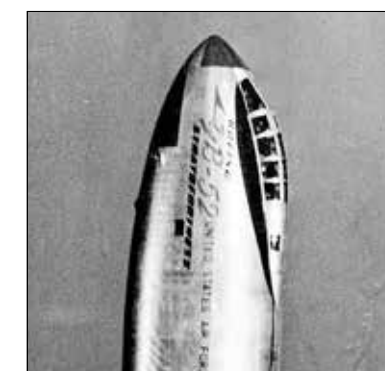


'Inexperienced driver' = L, 'future best
friend' = PUP (after all when it gets big
it will become man's best friend).

I hope this helps and it would be great
to get any feedback via

andrew@andrewtatham.co.uk

Andrew



B-52 bomber, aka a beehive hairdo.

Next Garden Shed Talk
Benjamin Pope
Creating Interest in your
Winter Garden

on
Tuesday 26th September
at 7.30pm

The Stepping Stones Pub
Tickets £6 on the door
All welcome

No need to book

See website for details www.gardenshed.club
Any Questions
Pauline Davis 07759646353
paulinedavis33@icloud.com

Love
Local

Supporting
Local
Producers

FoodFloat
Fresh local produce

Founded
2010

Community
Interest
Company

Deliveries every Thursday
Market stall in Dorking every Friday and Saturday

Seasonal local fruit & veg, bread, pastries, eggs, honey, cakes, milk,
poultry, meat, juices, preserves & treats. A sustainable local focus

website/online shop:
www.FoodFloat.org

email:
FoodFloat.sales@gmail.com



phone: Maddie on 07790 613348



Providing an experienced & personalised
property service for clients when
considering selling or buying.

...your local alternative agent...

Tim Garbett
07831 576616 / 0203 0925158
www.garbett.partners

**GARBETT
& PARTNERS**

SENERGYHEATING
CREATIVE ENERGY SOLUTIONS
PLUMBING, HEATING AND RENEWABLES
Oil and Gas Registered

01306 302 085  
www.senergyheating.co.uk 

TONY WINCH
CARPENTER, JOINER
& CABINET MAKER
www.tonywinch.com

01306 742373
07969 016 924

Get IT Fixed, Get IT Connected
Expert Repair & Maintenance



Brockham based. No call out charges. Fully transparent quotations with no hidden costs. We make technology work for you.

Call us now on **01737 845980** ChalkHill Systems
www.chalkhillsystems.co.uk 

Building Plans
For home improvements & extensions
Including planning & building regulations
Fast efficient service at competitive rates

MICHAEL LLOYD CEng MICE
For free consultation:
Phone: 01483 205479 or 07958 791 402

Park Lane Paws
Dog Grooming Salon



07545 588023 01372 277284
102 The Street, Ashted KT21 1AW
www.parklanepaws.com

 parklanepaws  Park Lane Paws

RWP

Extensions and alterations often require a
Structural Engineer

Robert Wynter & Partners Ltd
01306 879875
Book House, Vincent Lane
Dorking RH4 3HW
www.rwpltd.com

remedial roofing
For people with roof issues and deficiencies

- New roofs – slate & tiled roof specialists
- All roof repairs, moss removal & gutter clearance
- Flat roofs, traditional felt & GRP fibreglass
- New uPVC Fascia, soffit & guttering

Obtain an up-to-date report of remedial roofing on www.checkatrade.com

ALL WORK GUARANTEED
Call us today for a FREE quotation on:
01306 304736 | 07852 833802
info@remedialroofing.co.uk www.remedialroofing.co.uk






Our end of term celebrations started with a show, this year 'The Three Little Pigs'. I am sure many readers will be delighted to know that traditional tales continue to have a very important place in modern story telling. We also welcomed two work experience students, Isla and Katie, both past nursery pupils, who ably assisted staff in creating activities to support the children's playful learning and rehearsals. The children have really enjoyed gluing and sticking to create a Three Little Pigs wall display. They recreated the story playing with toy pigs and a wolf, dressed up as characters, built houses from our various construction toys and practiced huffing and puffing through a straw! All alongside learning new songs and



Pre-school children are invited to a short session of stories and activities in Westhumble Chapel on Sunday, 24th September at 3.30 p.m. Rhymes, favourite stories and drama activities plus a drink and snack. All children must be accompanied by an adult. A family ticket costs £8 with a maximum of two children per family. Extra children's tickets £3. Please book in advance as space is limited to 10 families. If over-subscribed, we may arrange an extra session. In aid of St Michael's Community Nursery to buy some new equipment for the children's enjoyment and education.
Anne Weaver 01306 883932



words to act out the story. Annoyingly, heavy rain came on the day of the show, and we had to move the performance inside the hall. Nonetheless it was fantastic to watch our very young children showcase their singing, acting and comic abilities! The rain almost held off for sports day, just a little light drizzle, not a big problem for our outdoorsy children. The potential slipping and sliding on the wet grass may have been more of a concern for the adult races! Luckily the only casualty was a hobby horse.

Just before the end of term we received 'fairy mail'. The fairies in our woodland wanted to thank the leavers for caring for their home, and suggested they could leave a pile of short sticks by the big tree and the fairies would make them into a thank-you present. Children dutifully collected a right-sized stick, wrote their name on a label for it, and left it for the fairies as instructed. Then 'Tada!' on their party day, the fairies had changed them into pencils, all labeled with their individual names.

Gordon the Magician entertained us with his magic show. Then after a meal using our home-grown potatoes, we awarded our leavers with their certificates and nursery gifts, including a tin of our homemade charcoal for every child. We also congratulated two nursery staff members for achieving their Level Three Forest School qualification.

The gift giving was not over though. A parent collection has bought the nursery two new pedal tractors, and (it's amazing what parts you can get) a tractor sweeper attachment that should help us pick up leaves in the autumn! Maybe we can capture a photo in action for next month's magazine.

During September, we will gradually welcome 24 new children and their families to the nursery and our village community.
Hilary Budd



Come and visit Silvermere Softplay Centre, where the joy and benefits of play are exceeded!

Situated in the heart of Dorking's Meadowbank Park, Silvermere's newly established softplay centre is an accessible and inclusive space for children and young people to unleash their natural energy through movement, play, and connection with others. We offer soft play sessions; pre-school play and parties. Our aim is for Silvermere Softplay to become a thriving hub for the community, where everyone – young and old – feels welcome. Later this year, we will be introducing structured movement-based groups to enhance wellbeing and connection for adults, as well as for children and young people.



Our warm and welcoming café – serving a delicious range of homemade, locally-sourced food and drinks – is the perfect space for everyone, including well-behaved pooches, to relax and connect.

For more info and booking: www.silvermere-softplay.co.uk
Proprietors: Katie and Michael of School Lane, Mickleham



Mickleham Village Hall Dell Close

Weekdays 9.15 am – 12.15 pm (term time)

WITH OPTIONAL LUNCH CLUB

On Mondays and Thursdays there is the option for children to stay until 2.45 p.m.

Maximum 26 children per session

• playing naturally • learning naturally

We offer an excellent range of pre-school activities for 2½ to 5 year-olds where they can learn through play in an informal friendly atmosphere.

Contact us for more information about admissions

01372 361021 www.stmichaelscommunitynursery.co.uk

Solution to July crossword

Across: 9 Ovation 10 Adamant 11 Fiction 12 Anthill 13 Hairspray 15 Night 16 Edibles 19 Tally-ho 20 Fever 21 Trafalgar 25 Centaur 26 Ropiest 28 Cholera 29 Tells on

Down: 1 Loofah 2 Tai chi 3 Kiwi 4 Inaner 5 Catalyst 6 East Anglia 7 Daringly 8 Stiletto 14 Solar panel 16 Efficacy 17 Inventor 18 Saturday 22 Aerate 23 Grease 24 Rotund 27 Pulp

Suitable items for the foodbank collection

Tinned veg / tomatoes / soup / sauces / baked beans	Washing-up and cleaning products
Powdered milk / UHT milk (green and blue only)	Tissues / paper towels / tampons
Rice pudding / long life sponge puddings	Men's / women's toiletries
Coffee / tea bags / long life fruit juice	Laundry products
Pasta / rice / pulses / instant mash	Nappies
Jam / honey / marmalade / spreads	Pet food
Sugar (500g bags only)	

Please do not include out-of-date items or those that require refrigeration



LOCAL FOOD BANK COLLECTION POINTS

MICKLEHAM

Garden Corner off Old London Road
Mary Banfield 01372 373912

WESTHUMBLE

St Anthony Pilgrims Way
Sue Tatham 01306 882547

Items may also be brought to St Michael's Church on Sunday mornings

Please see the appeal on page 3, which shows how important your FoodBank donations are at this time.

On to New Challenges

School ended for summer with a beautiful walk to church and an end of term service. We were extremely lucky with the weather and were joined by many of our families. The service was a sung celebration to take us into the holiday, with hymns and songs about hopes and dreams. The children singing was a nice way to end the academic year. It was wonderful to see all our families together enjoying the service.



The end of term is always bittersweet. We have watched those in year 2 learn, grow and make progress over the last three years. Then we have to say goodbye so they can continue to grow in a bigger pot. They will be missed but we know they will come and visit us when they can. As part of the Leavers Service, the children were presented with a personalised Bible. These were kindly funded by the church and the Friends of St Michael's, so a big thank you to them for supporting this valuable gift.

We hope the children remember us when they read the Bible stories and that they carry Christian values with them on their new journey. They have certainly lived them out in their time at St Michael's and we know these will help lay the foundation for their next steps.

Sea Life

Our whole school trip to Sea Life in late June was enjoyed by all. Once again, we were blessed with great weather and managed to squeeze in a visit to the beach with some paddling and pebble throwing: a highlight of the day! The children's behaviour was exemplary, and many interesting

questions were posed in relation to the weird and wonderful sea creatures we explored.

Summer BBQ

A huge thank you to the Friends for organising and running the Summer BBQ in July. This social event was a huge success and thoroughly enjoyed by the school community, including new parents and some St Michael's pre-school families. We were blessed with glorious weather which helped!

'Make a Difference' Week

Looking ahead to the autumn term, we have some exciting plans for developing our children's understanding of their role as *courageous advocates* of our wonderful world. We want them to feel empowered, even as young infants, to make a difference to others in their school, their locality and even across the wider world! We will be introducing a termly, 'Make a Difference' week across both federation schools. This will showcase children and adults within our community who have gone above and beyond for others. It invites pupils to be part of a small 'Make a Difference' project. Our first project will focus on helping those who need a clean and safe water supply, and we will be talking to our school council members (to be re-named, 'Little Governors') to help choose the right charity. We aim to have two elements to the week. St Michael's will lead an art-based project inspired by our previous National Gallery 'Take One Picture' work. We will use water-themed famous pieces of art to inspire us. Newdigate will organise a sponsored swim for all to get involved in.



St Michael's School

stmichaels-dorking.surrey.sch.uk/

Newdigate C.E. Infant School SIAMS Report

We have mentioned in a previous edition about our strong and growing partnership with Newdigate Infant School, which has now been formalised through our federation. Because of this, we are in the privileged position of learning from each other and using our link to drive school improvement. In June, following their SIAMS Church School Inspection, Newdigate received an 'excellent' overall grading and 'excellent' in all inspected areas. The inspection report speaks to the uniqueness of small, village infant church schools and what they provide to children and families. It highlights that 'lives are undoubtedly changed here' and details the many aspects of the school's vision and approach that have contributed to the excellent grading.

Many of the elements that were praised in the report are also mirrored at St Michael's. We are thrilled for all at Newdigate School and congratulate them on this amazing result. We are confident that St Michael's also provides excellence in these areas as our partnership and collaborative work has been the bedrock of school distinctiveness in both schools.

Nicola Cleather

Please join us for a

Harvest Craft Workshop

At St Michael's Infant School

Sunday 1st October 9.30 - 10.40 am



Followed by a family trail from
St Michael's Infant School to
St Michael's Church

11.00 am family
church service to
celebrate harvest

Refreshments and cake
sale in aid of the Friends



Cryptic Crossword



The golden squares can be organised into something that can be made from 9, 11, 13A, 5, 8 27, 16D, and 26 (8)

Across

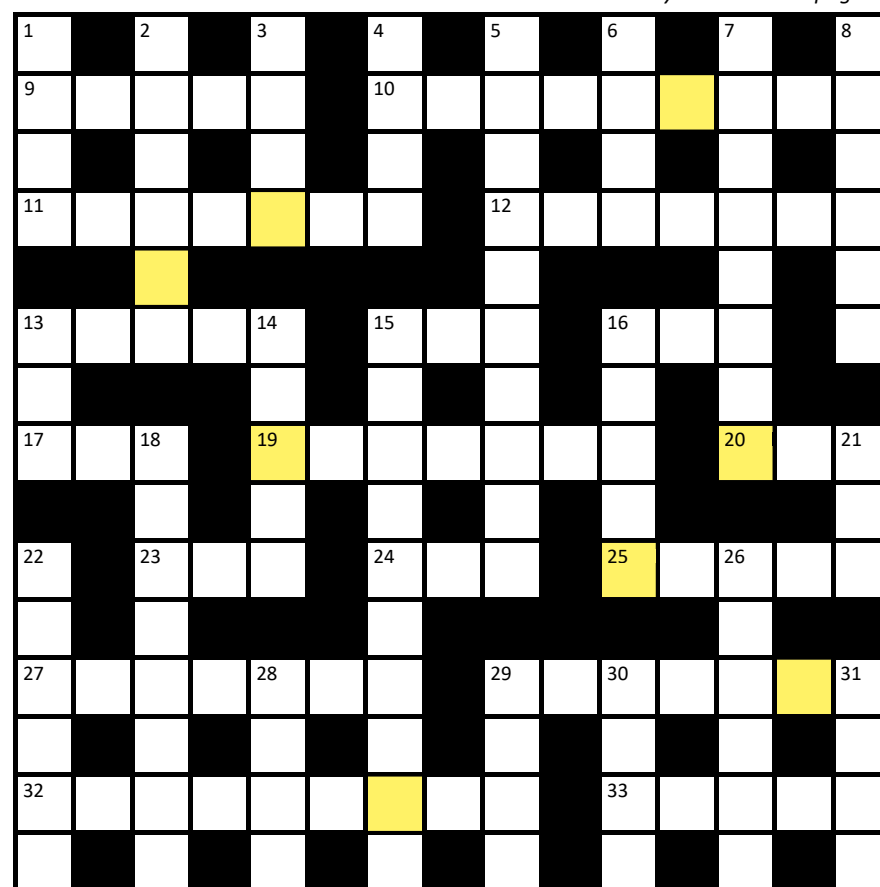
- 9 Elite engineers can be found in 13D (5)
- 10 End bit put into reverse in MOT failure? (9)
- 11 Roman god gets in the way of a source of Italian wine (7)
- 12 This man was responsible for leading us into perfidiously constructed mare consumed by fraud (7)
- 13 Drink made from Chanel No 5 in Tuscany (5)
- 15 What we're supposed to call Rees-Mogg from the oddly backward ruins (3)
- 16 Stops alternating signal in an emergency (3)
- 17 Dr Billroth's head is preserved in jam (3)
- 19 John gets mixed up in endless game when returning to another game (7)
- 20 Short throw (3)
- 23 The old Tory leader is just the same (3)
- 24 Majors in vehicle engineering (3)
- 25 Roundup is beginning to cut into harvest (5)
- 27 Identifies green follower that could also be after fish (7)
- 29 When short bull eat jumping flea, it be foreboding of bad (7)
- 32 Triumph might be the result after Tim Brooke-Taylor is heard to give an instruction (9)
- 33 Norma is one feral heart after surgery (5)

Down

- 1 Screw in a brake disc a millimetre too much (4)
- 2 System that allows police force to get rich without limit (6)
- 3 Organisation comes from what leads a policeman, a cowboy and a construction worker to wave their arms about (4)
- 4 No 10 aide admits to displaying foreboding (4)
- 5 The embodiment of 'exceptionally smooth and rich', 12 gets involved with spa (10)
- 6 Caprice is with that guy (4)
- 7 Stops embracing member when there's elbow room? (8)
- 8 Adjust nose peg without even opening Bake Off product (6)
- 13 (3/7 of 12 = 1 - S) in manufacturing technology (3)
- 14 Bill goes to university to make a clean breast (5)
- 15 After mixing Scotch, Lisa became overly pedantic (10)
- 16 Return the horrible newspaper we object to, honey! (5)
- 18 Sticks with Toby and Sean in a spot of bother (8)
- 21 Back remuneration for the production of a small dog (3)
- 22 Made up note included to blacken someone's character (6)
- 26 By the sound of it, someone coughed on gets a pick-me-up? (6)
- 28 Haydn ultimately followed a talent for music to make money (4)
- 29 Expired with indigo in your ears (4)
- 30 Say Hello on the radio to be in line to sample fruitcake (4)
- 31 Heavy metal tip (4)

Andrew Tatham

Solution to July crossword on page 26



IT'S TIME FOR A MACMILLAN
COFFEE MORNING
AND YOU'RE INVITED
LET'S DO WHATEVER IT TAKES TO SUPPORT PEOPLE LIVING WITH CANCER
LIZ ABSALOM 07801 791123 CHAPEL FARM, WESTHUMBLE
lizabsalom5@gmail.com 10 AM - 1 PM

Need help with your accounts?

Running a business needs time and energy – don't waste your time working on your accounts when you can work on your business instead!

At a4c we provide fixed fee accountancy solutions with friendly support throughout the year. Services include accounts, tax returns, VAT, payroll, book-keeping etc.

Friendly approachable and local to Dorking – we enjoy getting to know our clients so call us today for a no obligation chat.

We LOVE numbers so YOU don't have to!

01737 652852

esther@a4cgroup.co.uk

www.a4cgroup.co.uk



EST ——— The ——— XVI
**RUNNING
HORSES**

You are sure of a warm welcome at this historic 16th century inn. Join us daily for lunch and dinner, and on a Sunday bring the whole family to us for our delicious home-cooked roast dinner.

We have eight feature rooms, each named after a different racecourse.

OPENING HOURS
Monday – Sunday 12 noon – 11 pm
Old London Road, Mickleham
Dorking RH5 6DU
01372 388422
bookings@therunninghorses.co.uk

Serving older people in
Mickleham and across Epsom
and the Mole Valley since 2010



Tailor made to your individual requirements

- ♦ Award winning care ♦ Companionship services
- ♦ Home help services ♦ Personal care services
- ♦ Highly trained Care Professionals

If someone in your family needs a little help please contact us on

01372 741544

www.homeinstead.co.uk/epsom

Email: simon.burrowes@homeinstead.co.uk

Each Home Instead franchise is independently owned and operated. Copyright © Home Instead® 2022.



npd
REFURBISHMENTS

Bathrooms • Plastering • Tiling • Kitchens



We can offer specialist services or complete project management including inspirational design ideas. No job is too big or too small.

What you can expect from NPD Refurbishments:

- Close attention to detail and true craftsmanship with trusted testimonials
- Use of high-quality materials yet working with suppliers to obtain the best possible prices
- Use qualified and reliable contractors where necessary
- Unlimited options and flexibility to allow changes throughout the building process
- Help and advice in selecting amenities and options you will be happy with
- Constant communication to keep aware of project status
- Down to earth approach but high level of workmanship
- A tidy job environment to minimise disruption
- An open, comprehensive and honest quote

01403 738103

07917 457286

npdrefurbishments.com



**RESIDENTIAL • COMMERCIAL
AGRICULTURAL • SCHOOLS • ACOUSTIC
HOARDING • GATES • SECURITY**

**RICHARDSON & BRADS FENCING LTD
T: 01306 640 143 - 01483 414 745**

E: INFO@RBFENCINGLTD.CO.UK

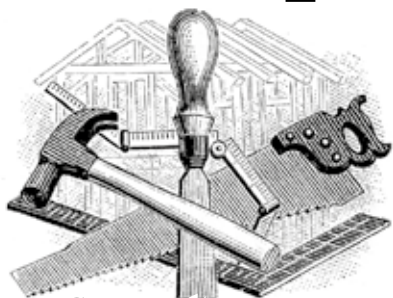
W: WWW.RBFENCINGLTD.CO.UK

A: 168 SOUTH STREET, DORKING, SURREY, RH4 2ES
UNIT 45 MARTLANDS INDUSTRIAL ESTATE, SMARTS HEATH LANE, MAYFORD, GU22 0RQ

J S Wilson

Mickleham

Carpentry & Building Services



Extensions ~ Conversions
Refurbishments ~ Property Maintenance
Fully guaranteed ~ Fully insured

One call WILL solve it all

Contact Jason on: 07761 926684 or 01372 379359

info@jasonswilson.co.uk



Tracey's
sewing room

Where beautiful things come
together one stitch at a time

We are now open in Dorking

Haberdashery & Fabrics

Sewing workshops

Alterations

Bespoke dress making

Blinds, cushions & curtains

Visit us at No 1 North Street

tracey@traceyssewingroom.co.uk 07511079441

www.traceyssewingroom.co.uk

Treeline Services Ltd

**YOUR LOCAL PROFESSIONAL
TREE HEALTH CARE SPECIALISTS**

Felling • Pruning • Stump Removal • Planting
Woodchip • Air Spade Services • Consultancy

Call us on 01306 741800

office@treeline.co.uk • www.treeline.co.uk



**WELL-SEASONED LOGS
FREE LOCAL DELIVERY**