

# MICKLEHAM PARISH Magazine

A community magazine for Mickleham and Westhumble



A.N. Colwell 1984

May 2022



## PROFESSIONAL CARPET & UPHOLSTERY CLEANING

- Local family running company
- Over 100's 5-star Reviews
- Award-Winning Customer Service
- Safe for Kids, Pets, and the Environment
- Effective against dirt & stains from drinks, food, makeup, pets & more

**SURREY  
MAIDS**

### REGULAR CLEANING

- Professional Equipment
- Trained Staff
- DBS Checked
- Flexible Hours

### DEEP CLEANING

- Moving out/in services
- Seasonal Cleaning
- Oven Cleaning
- Commercial Cleaning
- Tenancy
- Windows Cleaning
- Schools

**PATTY PLUS** 01306 866288  
SERVICES LTD OFFICE@PATTY.PLUS  
WWW.PATTY.PLUS

## Bullimores



Accountants for Life  
Tax • Accounts • Probate  
Inheritance Tax &  
Executorship

T: 01306 880880

E: partners@bullimores.co.uk

W: www.bullimores.co.uk

Bullimores LLP licensed to carry out the reserved legal activity of non-contentious probate in England & Wales by the ICAEW

# MICKLEHAM PARISH Magazine

May  
2022

## Mickleham Parish Magazine

A community magazine for Mickleham and Westhumble published under the auspices of Mickleham PCC with an independent editorial panel.

The magazine is published at the beginning of each month except January and August.

COPY DEADLINE  
JUNE MAGAZINE  
Sunday  
8<sup>th</sup> May

send to:

Sue Tatham  
St Anthony, Pilgrim's Way  
Westhumble  
Dorking RH5 6AW  
01306 882547  
editor@micklehammag.co.uk

Contributions in any form are welcome as are good quality photographs. There is no charge for advertising local charity and community events. However the editors reserve the right to shorten omit or reformat articles submitted for publication depending on space.



Printed by Holbrooks Printers  
Portsmouth

Mickleham Rectory

Dear friends

As I write this, I have been your priest for about six months. It has gone very quickly, and I am now feeling very much at home in Mickleham and in the church, chapel and rectory. I have recently been thinking about how we cope with change. Change can be a struggle, particularly if we are comfortable with how things are and or it comes as a shock. The changes that bereavement brings are especially hard. As if an overwhelming sense of loss is not enough to cope with there are also big differences in our day to day living. The Queen seems so alone without Prince Phillip by her side and has no one to joke with or relax with or share memories with. The horrendous changes forced on those living in Ukraine as they have had to suddenly face war and invasion, bombing and shelling, homelessness and bereavement, hunger and desperation are shocking to contemplate. Compared to what they are facing changes we face seem almost insignificant. I think one change as a result of both Covid and the war has been to prompt us to be more grateful for what we have, and being more compassionate towards those who are suffering. Perhaps it has challenged our priorities and increased our trust in God.

Even when change is potentially good, the thought of it can be hard. The idea of moving, getting to know a new area and new people and learning new ways of doing things can be daunting. Certainly, the process of getting ready to move was challenging as I tried to prune my book shelves, cut down on my clothes collection, sort out the garage and loft etc. But it felt good when it was done and many bags of the better items went to charity shops. It became exciting then to move and unpack and explore. It was a bit of an adventure finding which cupboard things were in and trying to find my way onto the M25 in the right direction. But I love it here, God helped me through the move and the change was worthwhile, which is what we often find if we are willing to give it a try.

We will all face changes of many sorts in the months ahead as we learn to live with Covid, as we develop more environmentally friendly lifestyles, seek to help refugees and people in poverty and for some there maybe changes in family life or in health or activity levels. Church life may change a little too as we welcome a new churchwarden, new members of PCC and hopefully new people in the congregation and on the various rotas and a new Rector for Leatherhead. Some may finally be able to come in person rather than watch on Zoom. There may be small changes as we adapt to new circumstances, but our church will remain a great place to come and belong. There is something which never changes and that is the love of God for each one of us and his comforting presence with us as he works with us to change us and our world for good.

With best wishes

*Sandra*

The Rev'd Dr Sandra Faccini, Parish Priest

## Stepping Stones

**MORE THAN JUST A PUB**

Part of the Mickleham and Westhumble

Community Platinum Jubilee Celebrations

Friday 3<sup>rd</sup> June 3 – 5 pm

Saturday 4<sup>th</sup> June from 2 pm

Afternoon Tea Party

Live Music from 5 pm

Hat Competition

Large Screen Broadcast

Beacon Tart

Outside BBQ

Acoustic Live Music

Children's fancy dress

Bookings now being taken



Last Monday night of the  
month from 7.30 pm

01306 889932

steppingstonespub@gmail.com

www.steppingstonesdorking.co.uk

Please check website for up-to-date menus,  
events and current opening times

## Sherlock Funeral Service

Sherlock Funeral Service is an  
Independent family owned business,  
established over 100 years

- Private Service Chapel & Rest Rooms
- Home visits arranged if required
- Pre-Paid Funeral Plans available
- Free Parking

Telephone: 01306 882266

Trellis House, 190 South Street, Dorking RH4 2ES.

Email: office@sherlockandsons.co.uk



Funeral Directors & Monumental Masons



# Churchwardens

## Thank you, Sarah

An unhappy item at our otherwise positive Annual Parochial Church Meeting on 3<sup>rd</sup> April was the announcement of Sarah Blake's decision to step down as churchwarden of St. Michael's after three years in the role. During this time Sarah has been very active and dedicated, working particularly hard during the 15-month vacancy while St. Michael's had no priest and the Covid outbreak was at its height. All this while holding down a challenging full-time job with a major multinational. So, like other members of our church community, I am sad that she has opted not to stay for a further period, but completely understand her wise decision. It is a great consolation

that she will be staying on the PCC and still be involved in church life and service. I have only known Sarah for about nine months, meeting her when I came for the interview in June, and have worked with her in the parish for just under six months. However, during this time she impressed me with her energy, enthusiasm, vision, attention to detail, encouragement and caring nature. As the parish is hugely appreciative of her unstinting dedication, so am I also very grateful for all that she has done to help me settle into my role and guide me through my first few months.

The silver lining to this particular cloud is that I am delighted to welcome to the role of churchwarden Catherine, who I am sure will do a great job alongside Tim. Churchwardens are key people in church congregations as they are the

senior lay members who work hard to enable services and events to happen in the buildings. They can be sources of inspiration, and encouragement as well as having some legal responsibilities for the buildings and associated items, church finances and worship. Catherine is keen to get involved and learn as much as she can and will bring new ideas and suggestions. I and the PCC are looking forward to working with her and believe that she will be a support, a source of wisdom and understanding and provide strong but compassionate leadership. Please welcome Catherine to her new role. For those of you who do not yet know her well, she has written a short introduction to herself below.

Sandra Faccini

## Catherine Diffey



Hello, my name is Catherine Diffey. Bruce and I have been together for more than 36 years, having met at university, and in that time have been fortunate enough to welcome three daughters, Freya, Aila and Maia, as

well as goldendoodle Jeeves into our lives. My work life has ranged from large multinational companies to small local charities in a variety of roles and I have always tried to volunteer in some capacity.

When we moved to Ashted we attended St Mary and St Nicholas where the girls were all baptised and I helped at Sunday school, was a baptism visitor and spent some time on the PCC. We started to attend St Michael and All Angels four years ago and have been interested to watch how the church has developed over that time. Joining a bible study group felt like a big step for me but the Monday evening group has really helped me to explore my faith in a supportive environment as well as being a great opportunity to get to

know people better. The recent Alpha course deepened this experience, and I am looking forward to growing my faith further.

I hope to get to know more of you better in my role as churchwarden and have been heartened by the offers of support I have already received. I am very conscious of how little I know at present but trust that God will lead me in his service.

## Sarah Ward

Sarah Ward is stepping down after ten years as the editor St Michael's church website. She has now handed over to Kelvin Pritchard who thanked her for her work. She wished him every success in his new role.

## St Michael's Church Services

10 am Sunday Services available on Zoom

Joining information for both Zoom and telephone users is available in Pews News Online each week. If you would like to join us by Zoom then contact Alison Wood for the codes or to ask her to include you on the emailing list for Pews News: admin@micklehamchurch.org.uk / phone 01372 376443. We hope as many of you as possible will be able to join us for worship.

Please refer to Pews News Online for the latest information. If you missed any of the services, or would like to revisit them, all are available on the church YouTube channel:

<https://youtube.com/channel/UCI4pbewCT91iZhcd0EjBIw>

Coffee Morning and Men's and Women's Breakfasts - see page 7



## St Michael's Church Community Group

Ukraine Easter Appeal: When I delivered our second car boot-full of items to *Surrey Stands With Ukraine* they were just loading up a taxi, whose driver was volunteering a delivery trip. Their central collection point is the old H&M shop in the Ashley Centre. They have established links with local Ukrainian contacts, and the aid items (sorted in Epsom) are delivered direct via these contacts to where it is most needed. The medical aid goes rapidly to field hospitals and hospitals near the worst-hit areas. As of early April, 12 large van-loads had so far got through, a total of more than half a million pounds-worth of items. Over the three weeks before Easter, this community put together more than 500 individual medical items and 50 items of dark clothing, which is a great effort. Do look up the *Surrey Stands*

*With Ukraine* on-line. There, you will see images and videos of some of the deliveries in Ukraine: the Epsom Charity has a special sticker on all their boxes, identifiable in the images. You will also be able to donate larger items, or money through their website. Thanks to everyone who donated.

Post-Easter: This Group envisages a shift in emphasis: that is not to say that the need for medical and other donations has gone away. Our drop off points remain open (same as the FoodBank: see the advert on page 26), but for medical supplies only. However, we feel that this Group may better placed, going forward, to focus its efforts on supporting refugees who are placed in accommodation within our parish. A local Dorking Refugee Support Group is being re-started, to concentrate on providing support to refugees who

are being housed locally. St Michael's Community Group is intending an active role. If anyone in the community has registered to provide accommodation, and would like some support, please let us know. This is a new initiative, and further information will be forthcoming in future communications.

Lent lunches: see below.

Foodbank: Our local needs are not forgotten, however. Please do add one or two things each week to your shopping. Quantities continue to be delivered to both Dorking FoodBank and The Meeting Room in Leatherhead. Despite your efforts re Ukraine, the FoodBank continues its work, and has not suffered materially by the simultaneous Ukraine appeal, which is laudable.

Helping Hands: see page 5.

Mark Day

## Lent Lunches 2022

After a gap of a couple of years the Lent Lunches were started again thanks to the determination of Mary Banfield. Because of the ever prevalent concern about people being close together it was decided to have all five of them in the village hall. Spacing there could be managed much better than in private homes.

Five courageous and kind ladies offered to host each one: Mary Banfield, Alison Wood, Jenny Hudlass, Wendy Wyatt and Liz Absalom. As a result of this three or four homemade soups were offered each Wednesday, and there were 17 different ones altogether! There would not be room in the magazine to list them all but to name five: celeriac and sweet corn, German sausage and potato (I was assured that the potatoes were English!), clam chowder, parsnip and apple, and red pepper with slightly spiced beetroot. Where would you find such a variety of choice, and judging by the lack of leftovers all of them were thoroughly enjoyed. Each Wednesday there was also an amazing choice of cheeses to round off the lunch.

Very sadly Liz was unable to host the last one, Covid is sometimes reluctant to loosen its clutches, but Alison kindly collected her soups and stood in for her. Hopefully by the time this magazine is published she will be back to full health.

The numbers each week varied between 12 and 28 and your generosity was truly amazing. £375 was sent to Combat Stress and £500 for the Ukraine. You can do the maths!

There must be a very, very big thank you to the army of helpers who turned up each week to set up and lay the tables and chairs, help wash up and serve at the hatch. But some must be mentioned by name, Debbie, Miriam, Sophie, John B, Alison W and Stephanie. Many apologies to those I have not mentioned, but you know who you are. There were so many of you and we are most grateful, all five lunches could not have happened without any of you.

Let us hope that next year Covid will be a nearly forgotten complication, so please start thinking of even more delicious soups to serve up to full tables.

Frances Presley



Top: Mary Banfield;  
below: enjoying delicious soups.



Superb professional  
cleaning of carpets  
oriental rugs  
upholstery curtains  
and leather  
Guardsman  
anti-stain protection

- spot stain and odour removal
- leather cleaning specialists
- flame retarding
- dust mite reduction service
- all work fully insured & guaranteed

For a free no obligation quotation call today  
Freephone 0808 144 9071  
John Joannides 28 Bracken Close Bookham

**Safeclean**  
*The furnishing care specialists from GUARDSMAN*



*Pinehurst  
Rest Home*

*We aim to provide an excellent service at competitive rates supporting emotional physical and social needs of our clients always respecting and protecting their status as adults.*

- Residential and 24-hour daycare
- Excellent cuisine
- Facilities for disabled: medic bath / lift
- Home doctor in attendance
- Single & sharing rooms
- Convalescent & short stays
- Lounge with TV & piano
- Separate dining room
- Physiotherapist chiropodist & hairdresser
- Entertainment: theatre visits / parties & cabarets held on premises

**National Trust Road Box Hill  
Mickleham Dorking Surrey RH5 6BY**  
Telephone: 01306 889942 / 888253

*Dorking  
Decorators*  
PROFESSIONAL  
PAINTERS & DECORATORS

**Established Local Family Business**

- Over 20 years' experience
- Internal & External
- Commercial & Domestic
- Friendly, First Class Service
- Surrey / Sussex/ Greater London

**FREE ESTIMATES  
01306 640418**  
**www.dorkingdecorators.co.uk**  
As approved by Checkatrade

**Mike Palmer**

**Electrical Services**

Part P registered electrician



From additional lighting and sockets  
to complete rewires

Fully insured Registered with the NICEIC

07866 930483 [mike@mikepalmer.biz](mailto:mike@mikepalmer.biz)

Boxhill Way, Strood Green, Betchworth RH3 7HY

**PRIVE**  
LUXURY HAIR SALON

8 High Street, Leatherhead  
01372 360302

[www.privelondon.co.uk](http://www.privelondon.co.uk) i prive\_leatherhead



**SIMON HOOPER**

**For all your decorating needs...**

Professional friendly and speedy service at all times

Fully insured

Insurance work

Exterior painting

Interior decorating

Free quotes & advice

Oil & Water-based products

Commercial/Domestic work

Wallpaper hanging & removal

07947 135 376

0208 3978 962

[www.slhdecoratingservices.com](http://www.slhdecoratingservices.com)

## Alpha in Mickleham & Westhumble

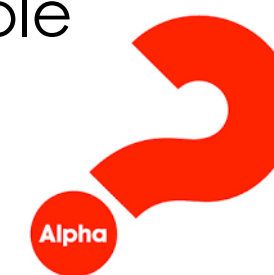
Alpha is a course created at the Holy Trinity Brompton (HTB) church to outline the fundamentals of the Christianity. It is designed not only to help Christians explore their faith further, but also to appeal to people outside the church who are interested in learning more about Christianity. It does this through some 11 meetings lasting around 2 hours each and one all-day discussion focusing on the Holy Spirit.

Our course was organised by Liz Absalom and hosted at her house (Thanks again, Liz!). We started our evenings enjoying together a cup of tea or coffee with home-made cakes, or other delicious snacks, kindly brought or contributed each week. This sociable start then led into a very professionally produced 20-25-minute video which was followed by discussions in two small groups, which enabled questions to be asked and the topic to be explored more widely. The evening ended with everyone gathering for a final review together. (Those who missed an evening could still view that session's video at home). The topics covered included Why did Jesus die?, Why and

how do I pray?, How does God guide us?, Does God heal today? and Who is the Holy Spirit?

People found the open, non-judgemental, supportive and friendly small groups worked particularly well and it was easy to make contributions. The groups were enriched by having a good mix of Christian experience and views. The presence of those participants who are not normally churchgoers and who brought their own viewpoints and opinions to the groups really helped the discussion and there was never enough time to discuss all that we wanted to!

The overwhelming feedback from the 14 people who took part was that although we could not always agree on a unanimous viewpoint, we found the sessions strengthened our awareness and deepened our faith by helping us to understand the fundamentals of Christianity and ourselves better. We also made new friends and got to know each other better. We look forward to holding these courses again in future and hope that more people will feel drawn to join them.



Comments from this course include:

*'The groups were great and I enjoyed chatting, discussing, learning more about Jesus, the Bible and the Christian life together and getting to know each other better.'*

*'The recent Alpha Course has been extremely well organised and held in the very pleasant surroundings of the Absaloms' home.'*

*'The course is friendly, welcoming, mostly understandable and 'user friendly'.'*

*'To me the most valuable parts were the group talks, it was not only helpful to hear other people's thoughts and feelings but also to realise that you were not alone in doubting.'*

*'Having shared this journey with such a supportive group of people I feel that my faith has deepened.'*

*'Would I recommend it? Definitely!'*

Tim Mathieson

## Helping Hands

As you know, Helping Hands has been started again after some time not being in operation. This reaches out to anyone in either village who is need of some kind of assistance, either around the house, running an errand, or a lift to the station, hospital, you name it.

A couple of weeks ago I had a request for a lift to hospital quite a distance from Mickleham, the return journey, and a possible return journey. Sadly, neither I nor WhatsApp were able to help as there were no drivers listed or who responded.

As a result of the long period of Covid most drivers on the 'books' had stopped driving because of age or eyesight. The other problem is that, if payment for petrol is asked for, then Insurance may arise, that has to be sorted out.

For Helping Hands to fulfill its name we need people to come forward and be prepared to have their name on a list offering their skills in whatever capacity. Since the first notice in the Magazine I have had one married couple contact me offering their time, but to make this work there needs to be a list of

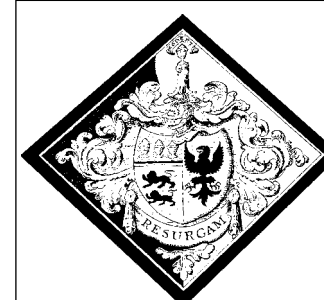
volunteers - two or three people may have to be contacted if others are not available. In fact the two on my list could not have helped in the case mentioned as I knew they were away on the day in question.

Please contact Mary, Will for WhatsApp, or myself if you would be prepared to be on a list to offer your services.

Mary Banfield: 01372 373912  
[mgbmw@aol.com](mailto:mgbmw@aol.com)

Will Dennis: 07903 842674  
[wdwdennis@icloud.com](mailto:wdwdennis@icloud.com)

Frances Presley: 01306 882473  
[jasempres@gmail.com](mailto:jasempres@gmail.com)



**Guided Tour of  
St Michael's Church  
by Sue Tatham  
Sunday 22nd May  
at 3 pm**

Come and find out about the history of the church in Mickleham, its many artefacts and the interesting people who worshipped here.



## Marking Royal Events

Readers will have noted from the information in this and earlier editions that the villages' Jubilee celebrations in June are to include tree planting on 5th June. This is a reminder of tree plantings that have taken place to mark previous events in Her Majesty's reign.

For the Coronation in June 1953 a blue conifer was planted in Westhumble, on land at the corner of Pilgrims' Way and Pilgrims' Close. The land is now part of the garden of a house built about 20 years ago, well after the tree was planted. It is now a very mature tree and it has a plaque commemorating the reason for its planting. Can anyone identify the species?

The small garden at the Chapel of Ease in Westhumble was created to celebrate the Coronation and there is a small plaque. In 2012 a rose was planted with a plaque to say that it was in celebration of the Diamond Jubilee. It was provided by Ian and Debbie Cameron who had been married at the Chapel in 2008.

In 2012 the country celebrated the Queen's Diamond Jubilee. The villages celebrated with street parties and a royal-based quiz. The Mickleham and Westhumble Horticultural Society was instrumental in arranging the planting of an oak tree in each village. The plantings were a little delayed awaiting the sourcing of suitable saplings together with suitable sites and conditions. The Westhumble oak is in the 'bonfire field' quite close to the gate from Adlers Lane, with a guard which has protected it when there are cattle in the field, from time to time. Planting took place with the attendance of the Armitage family, three very young children at the time, in the hope that they might remember the event when older. They still live in the village. It was watered for the first few years but now fends for itself and appears to be thriving.

The Mickleham tree is in a field off Swanworth Lane. It was planted in the



presence of children from St Michael's Community Nursery who greatly enjoyed the event. They were very small but perhaps they will remember taking part in this ceremony. These trees do not have plaques, but the record in the magazine is there to explain their history. Long may they reign.



Left top and centre: plaques in the Chapel garden; bottom: Mickleham Diamond Jubilee tree; above top: Coronation tree in Westhumble with (inset) its plaque; bottom: Westhumble Diamond tree.

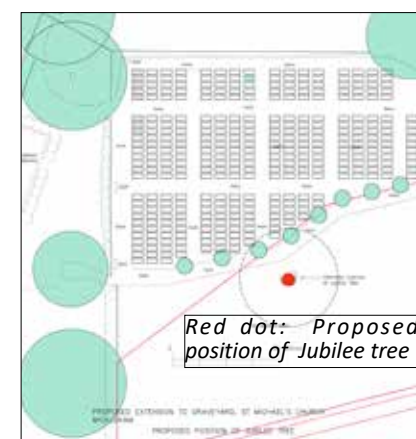
If you know of any other local tree planting events to mark royal events, do let the editor know.

Charlotte Daruwalla

## The Mickleham Jubilee Tree

St Michael's Church has been granted permission by the diocese to plant a tree in commemoration of the Queen's Platinum Jubilee. This will be planted in the centre of the new graveyard, in the area that is currently off-limits for burials unless and until further excavations demonstrate that there are no significant archaeological remains there. (See plan below).

Various species of tree were considered from ecological, carbon-sequestration and aesthetic aspects, as well as their suitability as a memorial tree. For example, the English oak was a prominent candidate, but the invasive oak processionary moth, whose caterpillars not only damage the tree but can also affect both human and animal health – has unfortunately now spread from London to Surrey.



The increased cost of saplings and management, including required spraying with insecticide, made this option unsuitable. After further consideration, therefore, the type of tree selected was a London plane tree (*platanus x hispanica*). The London plane is of course recognizable by its beautiful flaking grey and cream bark and maple-shaped leaves. It is a fast-growing tree and in 50 years or so will grow to around 25 metres (80 feet) in height. It has clear connections to London, Buckingham Palace and the Mall, so is a tree that is very familiar to Her Majesty. Importantly it is well suited to the chalky, slightly alkaline soil conditions in the graveyard and is very drought tolerant, something that in future years may, regrettably, be rather important.

This type of tree probably arose as a hybridised species in a Vauxhall garden in the 17th century, thereafter being planted extensively in London. It was approved by the parish council - which is paying for the tree - and the Jubilee Steering Committee, which consists of church, parish council and community representatives. Although the tree does not support the bio-diversity of some other options, the church has agreed this selection in the knowledge that any future development of the new graveyard area will involve only



A London plane tree

traditional native species of trees and hedgerow shrubs.

The Mickleham Jubilee tree will grow into a magnificent, long-living and stately commemoration of our longest reigning and much-loved monarch. Moreover, we hope to place a bench at or near the tree so that this will become a quiet, shady place to sit and enjoy the area's peace and natural beauty.

The Platinum Jubilee Tree's planting will be marked by a short ceremony following the special Jubilee church service on Sunday 5th June.

Tim Mathieson



### The Dorking Group of Artists Summer Exhibition

at Betchworth Village Hall Station Rd,  
Betchworth, Surrey RH3 7DF

www.dga.org.uk

For more information contact Jane Anderson Wood (Chairman) Tel: 01372 375123 Email dgacommittee@gmail.com

Thursday 2nd June to Saturday 4th June

10 am to 5.30 pm

Sunday 5th June 10 am to 4 pm



### First Saturday of the month Coffee Morning at Westhumble Chapel

Come along between  
10 am and noon  
for coffee and cake £1.

Free drinks for children

Saturday 7th May  
Everyone welcome

For further information call  
Jonathan Blake 07787 126966

### Men's and Women's Saturday Breakfasts at the Stepping Stones 9 – 10 AM



A social gathering open to everyone

#### WOMEN'S BREAKFAST

3RD SATURDAYS

21st MAY

Book with: Stephanie Randall

0773 6933 482

srandall55@gmail.com

#### MEN'S BREAKFAST

4TH SATURDAYS

28th MAY

Book with: Andy Diamond

diamo1@hotmail.co.uk

Please support our  
**Food Bank collection**  
see page 26



## Fully Experienced Carer/Companion

- PART-TIME LIVE-IN • DRIVING LICENCE HOLDER •
- HOURS to SUIT • BABY/CHILD SITTING •
- EXCELLENT REFERENCES • FULLY INSURED •

Reliable, Kind and Caring  
**07748 743 732**

High Quality, Professional Home Care and Companionship Enabling People in Mole Valley & Surrey to Remain Living Independently at Home



## YOUR LOCAL PROFESSIONAL TREE HEALTH CARE SPECIALISTS

Felling, Pruning, Stump Removal, Planting, Logs,  
Woodchip, Air Spade Services, Consultancy

Call us on **01306 741800**  
**office@treeline.co.uk • www.treeline.co.uk**



Your visiting  
**PHYSIOTHERAPIST**  
**SUE JUDD** MCSP HCPC

40 years of experience.  
All your requirements for elderly  
mobilisation & post-operative  
rehabilitation.

07834 227999 sue-judd@sky.com

## EDE BROS

• REMOVALS • STORAGE • SHIPPING •

- Since 1926, Capel-based and family owned
- STRESS-FREE, local, national & worldwide
- Contact us for your **FREE** estimate...

**01306 711293**  
**edebros.co.uk**

EDE BROS

REMOVALS • STORAGE • SHIPPING  
Dorking, Surrey, England  
01306 711293  
www.edebros.co.uk

EDE BROS

REMOVALS • STORAGE • SHIPPING  
Dorking, Surrey, England  
01306 711293  
www.edebros.co.uk

EDE BROS

REMOVALS • STORAGE • SHIPPING  
Dorking, Surrey, England  
01306 711293  
www.edebros.co.uk



Gill and Paula would like to warmly welcome you to Aspen Care offering assistance to enable you to live in the comfort of your own home with care and companionship.

- A happy alternative to a care home
- Cover while your family or carer takes a holiday
- Recuperation and rehabilitation following a hospital stay
- All aspects of personal care medication and meal prep
- Dementia care disability chronic & critical conditions end of life care
- Accompaniment to appointments

Call for a chat to discuss your requirements.

We look forward to hearing from you.

01737 354821 info@aspensliveincare.co.uk www.aspensliveincare.co.uk

## P J Oliver & Son

Window cleaning  
House & Garden Maintenance  
Roof Repairs, Guttering  
Painting & Decorating  
Ground works, fencing, hedge cutting,  
and tree work

Also Pest control

Call Phil on 07722 158111

Email Oliviagarrett79@gmail.com



## YOUR LOCAL FARM SHOP ON DENBIES WINE ESTATE

**farm shop deli plant centre**

**Open daily 9.30 to 5.30 and Sundays 10 to 5 Free parking**

Local produce, Seasonal food, plants and flowers

See our new Cutting Garden!

We deliver veg bags and more to the local area on Tuesdays and Fridays  
see **www.vgfarmshop.com** or email **vegbag@vgfarmshop.com** for details

**LOCAL • NATURAL • ETHICAL 01306 880720 www.vgfarmshop.com**

GET SET FOR

# The Mickleham & Westhumble Celebrations

1952 PLATINUM JUBILEE 2022

**FRIDAY 3rd JUNE**  
**STEPPING STONES**  
**WESTHUMBLE**  
**3-5pm**

**SATURDAY 4th JUNE**  
**STEPPING STONES**  
**WESTHUMBLE**  
**From 2pm**

**SUNDAY 5th JUNE**  
**MICKLEHAM**  
**From 10am**

**Afternoon Tea Party**  
**with Beacon Tart**  
**Hat Competition (4pm)**  
**Acoustic live music**  
**by Mood Swing**

**Live Music**  
**Large Screen Broadcast**  
**Children's Fancy Dress**  
**Outdoor BBQ**

**10am**  
**St Michael's Church Service**  
**11.30am**  
**Tree Planting in the**  
**new Graveyard at the**  
**back of the Church.**  
**Songs by the**  
**Mickleham Choral Society.**  
**12 noon**  
**Lunch - free to all attending:**  
**Hotdogs, Burgers, Chicken,**  
**vegan option available.**  
**From 2pm**  
**Free Ice Cream**  
**4pm**  
**Finish**

Spaces for Sunday are limited so  
book your place early, please contact:  
**clerkatmpc@gmail.com**



# Agnes Warburg

An article in the March magazine noted the centenary of Miss Warburg's gift of land to Box Hill. Lyn Richards, chair of the Friends of Box Hill, has done some research on Agnes Warburg for the FoBH Newsletter and has kindly agreed that it can be included here.

Agnes Warburg (1872–1953), pictured here, was an amazing woman. She was born in Paddington and spent her childhood in Hastings. She lived most of her life in London but died in Bramley in Surrey. Her brother, Sir Oscar Warburg, MP lived in Boidier in Headley. This maybe how she came to have such an affinity for Box Hill.

Agnes was a keen amateur photographer and active member of the Royal Photographic Society. Between about 1890 and 1940 she experimented with nine different colour photographic techniques and invented her own process called the War-type in 1918.

She played an important role in furthering the artistic and technical development of 'colour photography' and the Photographic Canadiana Journal has an eleven-page article on her and her contribution to early colour photography in Britain.



A lot of her work is at the Victoria & Albert Museum and one of her images is also part of their 'A History of Photography' 50 Postcards set. She even made into Wikipedia: [https://en.wikipedia.org/wiki/Agnes\\_Warburg](https://en.wikipedia.org/wiki/Agnes_Warburg)

## Beating the Bounds 2022

The Mickleham and Westhumble Local History Group are, after twenty years, planning to revive the old custom of Beating the Bounds. In the days before there were many maps it was usual to walk round parish boundaries, often on Ascension Day or during Rogation Week, so that the knowledge of the limits of each parish would be handed down to following generations. Also it was useful to avoid disputes which could arise as to who was responsible for the repair of churches or who had the right to be buried in the local churchyard.

The parish priest, churchwardens and parochial officials walked ahead of a crowd of boys who would beat the parish boundary markers with twigs from different trees. Markers would be set in place, but these could sometimes be slightly moved by neighbours who wanted to increase their boundaries!

Sometimes the boys would be whipped or even bumped on the markers to ensure they remembered in later years where the boundaries were. Some of these markers, or posts, can still be found today, but you may have to dig deep.

Sandra is going to lead these walks but I do not think that she will be doing any beating or bumping, but it would be good if we had some boys to come as well. In one part of the history of the walks that I read I found that they had been rewarded with 'some half-pence'. What would half-pence relate to in today's monetary values?

This is to ask you to make a note in your diaries that the History Group are going to Beat the Bounds of both Mickleham and Westhumble on Saturday 24th September and on Saturday 15th October, one village on each day. There will be full details in the July issue of this

## Raising Funds for Ukraine



Over the Easter weekend Erin Parsons of Pilgrims Way set up a blue and yellow lemonade stall outside her house to raise funds for Ukraine. She was targeting walkers in the lovely spring sunshine. Trade was brisk and she raised the astonishing total of £677. Congratulations to her and all her helpers. The daughter of James and Jenny Parsons, Erin (8) is clearly a very kind-hearted young person and possibly an entrepreneur in the making.



Annie and Will Dennis did a recce

magazine saying where to meet and at what time, where possible stops for coffee or lunch, or a rest! will be, what to do if it is raining etc. Dogs will be very welcome, and if you felt you would like to walk for your favourite charity, please do.

Please save any questions you might have until after the July details.

Frances Presley

Mickleham & Westhumble Local History Group

## James Chuter Ede

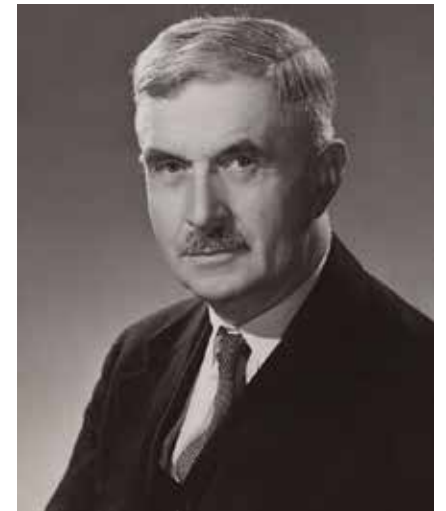
Following the AGM of the M&WLHG on 1<sup>st</sup> April, Stephen Hart gave a really interesting and informative talk about James Chuter Ede, a local man who had a successful career in local government before serving as Clement Attlee's Home Secretary. Stephen has recently written the first biography of Chuter Ede, who was born in Epsom in 1882 and became the longest serving Home Secretary since the 1880s (narrowly beating Theresa May by a few weeks).

Chuter Ede's parents, proud Nonconformists and Liberals, ran a grocers shop on Epsom High Street and their son 'Jim' attended West Hill Infants School where there were ninety children in a class. He won a scholarship to Dorking High School for Boys which later merged with schools nearby to become the Ashcombe School. In 1899 he started teacher training in Battersea and joined a Volunteer Battalion of the East Surrey Regiment when the Boer War began. Always a fan of cricket and horse racing, he found time to organise a Cricket Club in Epsom and never missed the Derby. In 1903, soon after joining the Unitarian Church, he was awarded a scholarship to Christ's College Cambridge (coincidentally Stephen Hart's college) where he read Natural Sciences. After two years he left without a degree due to a lack of funding. Ironically, Cambridge awarded him an Honorary MA for his services to education almost forty years later.

He went back into teaching, mostly in Mortlake, and in 1908 made his first move into politics as a Liberal when he won a seat on Epsom Urban District Council. A keen rambler and photographer with a great love of the Surrey countryside, he took a group of his Mortlake pupils by train to Epsom from where they walked to Box Hill and back. He resigned from teaching in 1914 to stand successfully for the vacancy on Surrey County Council and was appointed to the Education Committee. Soon after the outbreak of WW1 he re-joined the East Surreys and as a result of his war experience switched his political affiliation to the Labour Party, encouraged by his wife Lilian whom he had married in 1917.

Hoping to gain a seat in parliament, Chuter Ede stood as the Labour candidate for Epsom in 1918 where, unsurprisingly, he lost heavily to the Conservative candidate. He was briefly the MP for Mitcham before winning the seat in South Shields in 1929 which he held for most of the next thirty-five years. His Tyneside constituents seemed unconcerned that their MP was Chairman of Surrey County Council and Charter Mayor of Epsom and Ewell for some of the years he represented them in parliament. His years with the SCC were of great benefit to our local area, particularly Norbury Park which seemed likely to be bought for development in 1930. Chuter Ede was instrumental in persuading Alderman Willcocks, a wealthy member of the SCC, to guarantee funding for the council to purchase the estate and preserve much of it as an open space. He also secured the future of Burford Lodge after the death of the owner Sir William Lawrence in 1934. Again, there was concern the estate would be sold to a developer but luckily the National Trust bought most of the grounds and the Joint Electricity Authority (of which Ede was Chairman) bought the house and used it for testing and repairing electricity meters.

In May 1940, Chuter Ede was appointed Parliamentary Secretary to the Board of Education in Churchill's Coalition Government. R. A. 'Rab' Butler became President of the Board of Education and the two men worked together on educational reform resulting in the 1944 Education Act. Chuter Ede regarded it as his greatest achievement. Amongst its major provisions were the raising of the school leaving age to fifteen from fourteen and free secondary education in all state schools. When Attlee became Prime Minister after the Labour victory in 1945 Chuter Ede was deeply disappointed to be made Home Secretary as he was hoping to become Minister of Education. The following year Chuter Ede paid for new Stepping Stones across the River Mole near Burford Bridge after the original ones were destroyed during the war. There was a re-opening ceremony held



James Chuter Ede by Bassano Ltd. © National Portrait Gallery, London

on his 64<sup>th</sup> birthday, 11<sup>th</sup> September 1946, where Attlee cut the tape and then posed with his wife for a photo on the stones, which were barely above the water level after heavy rain. Dinner followed at the Railway Arms (now the appropriately named Stepping Stones) and Attlee recounted how his father and grandfather were both born in Dorking.

In 1950 Chuter Ede made the decision to deny a reprieve to Timothy Evans who was hanged for the murder of his baby daughter and believed to have killed his wife. This had far-reaching effects because three years later John Christie, who lived at the same address as Evans and had given evidence against him, was hanged after confessing to the murders of seven women, including Evans' wife. The campaign to abolish capital punishment gained pace and Chuter Ede stated that if he had known all the facts Evans would not have been hanged. The bill to end capital punishment was finally voted on in 1965, shortly after Chuter Ede had been given a life peerage. Lord Chuter-Ede of Epsom voted in favour of abolition. He died a few months later in a nursing home in Ewell not far from the family home in Tayles Hill. His obituary in *The Times* described him as 'one of the most sensible politicians of his generation' whose 'wit and wisdom were a constant refreshment to the House'. Despite his Unitarian faith, the funeral took place at St Martin's Church, Epsom. He is buried in Epsom Cemetery in the same unmarked grave as his parents and his wife Lilian, who had died in 1948.

Judith Long



## A Confidential & Safe Space to Talk

Counselling • Mind & Body Healing  
Reiki • Relax into Nature Sessions  
Face to face/Online/Outdoors/Distance

Supporting you with compassion and understanding through challenging times



Call Judith Cobby  
on 01306 882229  
or 07790 614448

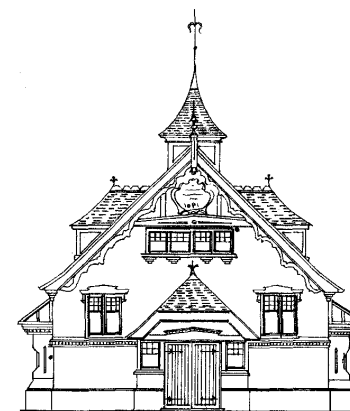
[www.healing-inspiration.co.uk](http://www.healing-inspiration.co.uk)

## TIM LANGLEY

*Experienced craftsman*

ANTIQUE RESTORATION  
CABINET MAKING  
FRENCH POLISHING

Free estimates collection & delivery  
01372 457700 07960 486455



## Mickleham Village Hall available for hire

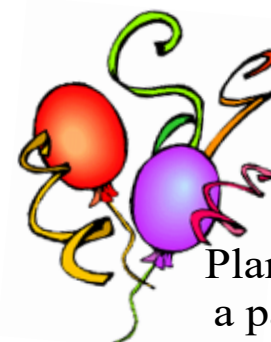
Hall bookings  
Table & chair hire

Deanna Darnell

07790 941 601

[bookings@micklehamvh.co.uk](mailto:bookings@micklehamvh.co.uk)

[www.micklehamvillagehall.org.uk](http://www.micklehamvillagehall.org.uk)



Planning a party?

Equipment available for hire

China ~ Cutlery

Electric urn

Equipment hire

Mary Banfield

01372 373912

[admin@micklehamvh.co.uk](mailto:admin@micklehamvh.co.uk)

## Community Directory

BOX HILL AND HEADLEY HEATH (National Trust)

Lead Ranger – Mark Dawson

01306 885502

[mark.dawson@nationaltrust.org.uk](mailto:mark.dawson@nationaltrust.org.uk)

Friends of Box Hill – Chair Lyn Richards

01737 842889

[lyn@mra.uk.net](mailto:lyn@mra.uk.net)

BOX HILL SCHOOL

Headmaster – Cory Lowde

01372 374814

[HMPA@boxhillschool.com](mailto:HMPA@boxhillschool.com)

DORKING CRICKET CLUB

Chairman – Andrew Homewood

[homewooda@hotmail.co.uk](mailto:homewooda@hotmail.co.uk)

DORKING GROUP OF ARTISTS

Exhibition Secretary – Patricia Booth

01737 24491

[patriciabooth100@gmail.com](mailto:patriciabooth100@gmail.com)

DORKING LAWN TENNIS & SQUASH CLUB

Jim Cattermole

01306 883629

[jim.cattermole@uwclub.net](mailto:jim.cattermole@uwclub.net)

DORKING RUGBY CLUB

Jim Evans

07789 176417

[jim@flintcottage.net](mailto:jim@flintcottage.net)

THE GARDEN SHED

Pauline Davis

07759 646353

[paulinemdavis@gmail.com](mailto:paulinemdavis@gmail.com)

Susie Gowenlock

07768 923088

[susiegowenlock@gmail.com](mailto:susiegowenlock@gmail.com)

JUNIPER HALL FIELD CENTRE

01306 734501

[enquiries.jh@field-studies-council.org](mailto:enquiries.jh@field-studies-council.org)

Head of Centre – Maddy Jones

[m.jones@field-studies-council.org](mailto:m.jones@field-studies-council.org)

Friends of Juniper Hall – Suzy Hughes

01483 281935

[suzy@suzyhughes.co.uk](mailto:suzy@suzyhughes.co.uk)

MICKLEHAM CHILDREN'S PLAYGROUND ASSOCIATION

Secretary – Sarah Parfitt

07767 891772

[sarah@sarahparfitt.com](mailto:sarah@sarahparfitt.com)

MICKLEHAM CHORAL SOCIETY

THURSDAYS 8 - 10 pm – MICKLEHAM VILLAGE HALL

01372 373106

Conductor – Juliet Hornby

01306 883932

Secretary – Anne Weaver

[www.micklehamchoral.org.uk](http://www.micklehamchoral.org.uk)

[secretary@micklehamchoral.org.uk](mailto:secretary@micklehamchoral.org.uk)

MICKLEHAM OLD BOX HILLIANS FOOTBALL CLUB

Secretary – John Atewell

01372 374745

MICKLEHAM PARISH COUNCIL

SEE WEBSITE FOR MEETING DATES

[www.micklehampc.org.uk](http://www.micklehampc.org.uk)

Chairman – Rev'd David Ireland

01372 379381

[rev.ireland43@btinternet.com](mailto:rev.ireland43@btinternet.com)

Parish Clerk – Feena Graham

[clerkatmpc@gmail.com](mailto:clerkatmpc@gmail.com)

MICKLEHAM PARISH MAGAZINE

Editor – Sue Tatham

01306 882547

[editor@micklehammag.co.uk](mailto:editor@micklehammag.co.uk)

Co-Editor – Charlotte Daruwalla

01306 884025

[editor@micklehammag.co.uk](mailto:editor@micklehammag.co.uk)

Administrator – Vacant

MICKLEHAM VILLAGE HALL

Chairman – Ben Tatham

01306 882547

[chairman@micklehamvh.co.uk](mailto:chairman@micklehamvh.co.uk)

Bookings Manager – Deanna Darnell

07790 941601

[bookings@micklehamvh.co.uk](mailto:bookings@micklehamvh.co.uk)

## Ballroom Dancing Latin American Dancing Professional Training [IDTA]

Private lessons on  
Tuesday afternoons and  
Sunday evenings

At Mickleham Village Hall  
Dell Close Mickleham Surrey RH5 6EE  
07748 867 732  
[vmvdancing@gmail.com](mailto:vmvdancing@gmail.com)



IDTA Qualified Teacher

## Rowlatt Garden Services

# RGS

EST.1985

*Gardens large and small  
we maintain them all*

All aspects of private and commercial garden  
and estate maintenance landscaping undertaken  
Fencing grass & hedge cutting

Telephone: 01737 841524 Mobile: 07887 838666  
References available upon request



Joseph

## De Decorators

• Painting • Decorating • Wallpapering •  
Plastering • Tiling

Mickleham based 40 years' experience  
01372 372331 07973 358 932



Regular Lawn Mowing  
Lawn Care & turfing  
Pressure Washing  
Hedge Trimming  
General Garden Maintenance

[phil@philsmowingdorking.co.uk](mailto:phil@philsmowingdorking.co.uk)  
07905 160765



## KING WILLIAM IV

Friends & Neighbours,

We're keeping busy at the moment getting ready for our busy summer season, just waiting for the warmer weather. Our lazy Sunday afternoon live music is making a return, the first event being Sunday 29th May. So don't forget to join us between 4.30 pm to 7.30 pm, the live music will continue every

Sunday until September 4th. We have some new acts and of course old favourites playing for us this year.

We also have a great new gin menu for you and the return of some of our favourite summer menu dishes

Our new patio is getting great feedback and is proving to be quite the sun trap, we have managed open up the views in this area and believe it is going to be very popular place. But we will always make time and space for our locals & regular supporters. So we can't wait to see you all in the sunshine soon for a cheeky beverage and great food.

All the Best, Eamonn, Anne & Kat

Byttom Hill Mickleham 01372 372590 [www.thekingwilliamiv.com](http://www.thekingwilliamiv.com)



## ST MICHAEL'S CHURCH

*within the United Benefice  
of Leatherhead and Mickleham*

INCUMBENT – VACANT

PARISH PRIEST

The Rev'd Dr Sandra Faccini \* 01372 4176  
NB Corrected mobile number 07763 488961  
parishpriest@micklehamchurch.org.uk

\* Main working days: Monday, Tuesday and Sunday

CHURCHWARDENS

Timothy Mathieson 07555 597163  
TimothyMathieson@aol.com  
Catherine Diffey 07790 473167  
Mickleham@diffey.me.uk

PARISH ADMINISTRATOR

Alison Wood 01372 376443  
admin@micklehamchurch.org.uk

PCC SECRETARY

Elizabeth Moughton 01306 883040  
pccsecretary@micklehamchurch.org.uk

TREASURER

Richard Siberry 01372 375303  
pcctreasurer@micklehamchurch.org.uk

ORGANIST

David Fishwick 0208 7732420  
organist@micklehamchurch.org.uk

WEDDINGS CO-ORDINATOR

Elaine Machin 01372 724972  
weddings@micklehamchurch.org.uk

BAPTISMS CO-ORDINATOR

Vickie Leney 01306 884054  
baptisms@micklehamchurch.org.uk

FUNERALS ORGANISER

Brian Wilcox 01372 374730  
dbrianwilcox@btinternet.com

WEBSITE MANAGER

Kelvin Pritchard 07770 280410  
website@micklehamchurch.org.uk

[www.micklehamchurch.org.uk](http://www.micklehamchurch.org.uk)

*For information about services for other  
denominations see website pages.*

*Search on 'Churches Together Mole Valley'*



## CALENDAR

### MAY

#### 1 SUNDAY - Third Sunday of Easter

10 am  
3 Tuesday 7.30 pm  
7 Saturday 10 am to noon

Family Service  
Prayer meeting in Church  
Coffee Morning at Westhumble Chapel

#### 8 SUNDAY - Fourth Sunday of Easter

10 am  
11.30 am

Holy Communion  
Matins at Westhumble Chapel

*Deadline for June magazine*

#### 15 SUNDAY - Fifth Sunday of Easter

8 am  
10 am  
20 Friday 8.15 am  
21 Saturday 9 am

Holy Communion in church  
Holy Communion  
Garden Shed visit to Highgrove  
Box Hill School Speech Day Service  
in Church  
Women's Breakfast at the Stepping  
Stones  
Mickleham Village Hall AGM in the Hall

#### 22 SUNDAY - Sixth Sunday of Easter

8 am  
10 am  
3 pm  
25 Wednesday 7.30 pm

BCP Holy Communion at Chapel  
Holy Communion  
Guided tour of St Michael's Church  
Mickleham Parish Council AGM in the  
Ranmore Room  
Men's Breakfast at the Stepping Stones

28 Saturday 9 to 10 am

#### 29 SUNDAY - Seventh Sunday of Easter

10 am

Morning Prayer



### Dates for your diary

3 <sup>rd</sup> – 6 <sup>th</sup> June	Platinum Jubilee Celebrations
15 <sup>th</sup> June	LHG visit to Juniper Hill
18 <sup>th</sup> June	Choral Society's Summer Concert
9 <sup>th</sup> July	Summer Show
24 <sup>th</sup> September	Beating the Bounds part 1
15 <sup>th</sup> October	Beating the Bounds part 2



## MEMBERS OF THE PAROCHIAL CHURCH COUNCIL

Sarah Blake	Mark Day
Andy Diamond	Caroline Jones
Vickie Leney	Elaine Machin
Tim Mathieson	Elizabeth Moughton
Kelvin Pritchard	Richard Siberry

## ST MICHAEL'S CHURCH COMMUNITY GROUP COMMITTEE

Mary Banfield	01372 373912 mgbbmw@aol.com
Kay Cain	07736 281752 kay_jay@hotmail.co.uk
Mark Day	07852 117249 mickleham@hotmail.com
Andy Diamond	07789 775354 diamo1@hotmail.co.uk
Frances Presley	01306 882473 jasempres@gmail.com
Amy Ward	07709 199292 amycatrimonaward@gmail.com

## ST MICHAEL'S CHURCH COMMUNITY GROUP HELPING HANDS

INCLUDING FOOD FOR FRIENDS

*A service for all residents  
of Mickleham and Westhumble*

Examples of services we offer:

- Essential shopping / collection of prescriptions
- Changing library books
- Small tasks: eg changing fuses, altering clocks etc
- Dog walking
- Visiting / befriending
- Home-cooked meals for local families going through difficult times

Requests to

Frances Presley 01306 882473

*More helpers needed – please contact  
Frances if you can spare some time.*



# Community Directory

Continued from page 13

## MICKLEHAM & WESTHUMBLE BADMINTON CLUB

Membership Secretary Sarah Blake tinkerbell0044@hotmail.com

## MICKLEHAM CRICKET CLUB

Membership contact Will Dennis 07903 842674  
will@micklehamhallfarm.co.uk

## MICKLEHAM & WESTHUMBLE HORTICULTURAL SOCIETY

Chairman – David Kennington 01372 362309  
www.surreycommunity.info/mwhs davidkennington144@gmail.com

## MICKLEHAM AND WESTHUMBLE LOCAL HISTORY GROUP

Chairman – Ben Tatham 01306 882547  
ben@thetatham.co.uk  
www.micklehamwesthumblehistory.co.uk/community/mickleham-westhumble-local-history-group-13483/home/

## MOLE VALLEY DISTRICT COUNCIL

Councillor Elsie Rosam 01306 885001  
01306 885695  
elsierosam29@gmail.com

## THE ARTS SOCIETIES (FORMERLY NADFAS)

Betchworth – Mary Venning 01306 883301  
Dorking – Sue Tatham 01306 882547  
Leatherhead – Sarah Sheridan 01306 883699

## ST MICHAEL'S CHURCH OF ENGLAND (A) INFANT SCHOOL

info@stmichaels-dorking.surrey.sch.uk 01372 373717  
Friends of St Michael's School – Chair Amy Riele  
friendsofstmichaels2017@gmail.com

## ST MICHAEL'S COMMUNITY NURSERY

WEEKDAY MORNINGS – MICKLEHAM VILLAGE HALL  
Supervisor – Hilary Budd 01372 361021  
stmichaelsnursery@btinternet.com

## SURREY COUNTY COUNCIL

Councillor – Hazel Watson 03456 009 009  
01306 880120  
hva.watson@btinternet.com

## SURREY WILDLIFE TRUST

01483 795440  
info@surreywt.org.uk

## WESTHUMBLE RESIDENTS ASSOCIATION

David Allbeury 07860 227451  
westhumble.neighbourhood.watch@gmail.com

## WESTHUMBLE NEIGHBOURHOOD WATCH

Lead Co-ordinator – David Allbeury 07860 227451  
westhumble.neighbourhood.watch@gmail.com

## ADDITIONAL CONTACT INFORMATION

### CITIZENS ADVICE

Dorking – Lyons Court 01306 732302  
Leatherhead – Swan Mews High Street 01306 732301

### CRIMESTOPPERS

0800 555 111

### POLICE Non-emergencies

101  
(often quicker to make online report) <https://report.police.uk/>

Neighbourhood Specialist Team – Dorking Rural East

General enquiries molevalley@surrey.pnn.police.uk

### NHS Urgent and emergency care

111

# Babysitting by local youngsters

Those listed below are at least  
14 years old.

Gracie Owen \*\*07790 900649  
Annabelle Prosser\*

07443 634179

Maisy Presley\* 07720 657327

Martha Pearce 07514 080005

Rory Lee \*\* 07973 360950

Ellie Kim 07773 395575

Chelsea Edwards 07834 695816

Edward Moran 07740 088124

Daisy Armitage \*\*07580 473812

\* Holidays only  
\*\* Parent's mobile number

If you would like to add your  
name to this list please get in  
touch with Sue Tatham

01306 882547

editor@micklehammag.co.uk

No Charge

# Advertising in the Parish Magazine

Please contact

Sue Tatham (as above)

Small ads: a nominal fee is  
charged for ads where items or  
services are bought or sold.

We have been advised to print  
the following reminder:

We cannot guarantee the  
quality of the goods and  
services offered by our  
advertisers.



# All good things must come to an end ...

Everyone will have read with sadness  
that Sue Tatham has decided to call  
time on her long tenure as editor of  
Mickleham Parish Magazine. There  
will be other opportunities to record  
her achievements before the end of  
the year. In the meantime there will  
need to be discussion of how matters

will be taken forward. Watch out over  
the coming weeks for requests for  
contributions to the discussion; and  
for specific help without which it may  
not be possible to continue to keep the  
magazine on the road.

Charlotte Daruwalla  
Co-editor

## Mickleham & Westhumble Horticultural Society's

# Summer Show

Saturday 9<sup>th</sup> July

Schedules were delivered with  
last month's MPM

With lots of time to prepare let's make  
this a bumper year!



# Village Summer Show

In last month's magazine I hope you  
noticed the Show Schedule for the  
Summer Show to be held at the Village  
Hall on Saturday 9th July from 2.30 to  
4.30 pm.

As usual there will be tea and cake  
available all afternoon and plenty to see.

Despite the cold spring weather we have  
been having in April, as soon as the days  
warm up, the flowers and vegetables  
will get going in a rush, so take a look  
at the schedule and see what you can  
enter into the Show. If growing is not  
your thing, there is always cooking, arts

and crafts or photography - in fact more  
or less anything you have created will fit  
in one category or another - the great  
thing is to have a go.

Children's entries are particularly  
welcome and there are sections for  
anyone aged from 3 - 12 years old. If  
your child attends either St Michael's  
School or Nursery, all family members  
may enter the show - both parents and  
children, so no need for anyone to feel  
left out.

Hope to see lots of you there on the day.

David Kennington



## Local Artists Pauline Allbeury and Daisy McMullan

# Spring Exhibition

Continues to 14th May 9 am - 4 pm Tues -Sat

Pop Up Gallery Leatherhead

Swan Centre Leatherhead KT2 28AH

(Next To Costa Coffee)

For information call 07802848455 or email: pallbeury@gmail.com



# Community News



Proud parents Duncan and Agatha  
with Annabel

Congratulations to: Duncan and  
Agatha Irvine on the birth of their  
daughter, Annabel Elizabeth, on 26th  
March; and to

Sarah and Marc Thomas on the birth  
of Louis Nicholas, born on 14th March  
at home. Sarah and Marc moved to  
Chapel Lane recently.

Welcome to: Abbie and James Lewis  
and their daughters Hetty, 9, and  
Anja, 7, who have moved from Fetcham  
to Old London Road; and to

Oliver and Leanne Dodd with their  
5- year old son Isaac. They have moved  
to Dell Close from Dorking.

Farewell to: April Aslett who, after  
32 years in Westhumble, has moved  
from Westhumble Street to Brockham.  
Please let us know if you have  
any community news. **editor@  
micklehammag.co.uk** is the contact.

## Roger Howell

We were saddened to learn that  
Roger Howell of Adlers Lane  
passed away on 5th April, just short of  
his 90th birthday. We hope to include  
an obituary next month. We send our  
deepest sympathy and love to Rhona  
and his family.



# Westhumble Residents Association Annual General Meeting

The AGM of the Westhumble Residents Association was held in the Chapel and by Zoom on 30th March. The formal business is in the minutes which have been circulated. This article is about the matters of more general interest. The chairman, David Allbeury, was thanked for his outstanding work in keeping the community informed through the dramas of bridge works, water works and road closures and for trying to get the various bodies responsible to behave sensibly.

The Electoral Commission's draft proposals for changes to keep the number of voters about equal for each councillor are that the number of councillors on Mole Valley District Council will be reduced from 41 to 39 and all wards will be 3 member wards with elections by thirds. The draft proposals show Mickleham and Westhumble to be in a ward with all the villages to the south right to the Sussex border. Any proposals for change to this proposal must keep the number of voters equal for each councillor but nobody suggested any alternative. The changes will come into effect with an election in May 2023.

The County Council is proposing that additional double yellow lines be put in Westhumble Street and Chapel Lane. There was a lively debate with most people saying that the proposals were 'the worst of all worlds' as people would assume that they could park

anywhere without yellow lines. It appears that this proposal will be implemented but changes could be proposed for later years.

Mention was made that the Sue Tatham would retiring from being editor of the Mickleham Parish Magazine at the end of 2022 after 38 years. One person volunteered to discuss helping with the magazine.

There will be an article in a later magazine about the Westhumble Field Company which owns the two fields where the bonfire and fireworks are held. The company was set up in 1996 to stop the fields from being developed

and now requires money to pay for tree works and gate repairs.

The bonfire and fireworks will take place on Saturday 5 November. Volunteers will be needed for bonfire building.

There will be no action on speeding and noisy motor cycles as the Police & Crime Commissioner does not think it important.

The Chairman said that the National Trust had bought Ashcombe Woods which are the west of Westhumble and between the North Downs Way and Ranmore Common Road.

Ben Tatham



# Leith Hill Music Festival

It's back! HURRAH! After a two-year gap the Leith Hill Music Festival (LHMF) returns to Dorking Halls. New to this annual event, I am leaving my journalist hat firmly on its peg and sharing a personal account of the LHMF from the standpoint of an alto with the Mickleham Choral Society (MCS). It is also about a silver chicken, so read on. Having signed up for the first time, to sing in the April 2020 LHMF, I was full of trepidation at the competition part of the festival. I imagined a Bake-Off style 'sing-off'. Nevertheless, when it was cancelled (we all know why), I shared in the communal disappointment. Having taken the plunge this year when the opportunity finally arose again I was not disappointed. What a joyous experience it was.

The Spring 2022 event was a two-day affair on Friday and Saturday: a combination of competition in the morning and concert in the evening. Choirs from Dorking, Leatherhead, Epsom, Oxshott and Capel competed Friday morning and then in the evening, performed music by Ralph Vaughan Williams, Beethoven and Jonathan Willcocks, the latter being also our Festival Conductor. And how lucky we are to have him. Jonathan is a highly respected conductor and composer, who has reorganised this music festival to give more autonomy to each of the choirs' individual conductors, allowing them to choose their own pieces for the competition part of the event.

Juliet Hornby, the much-loved conductor of MCS, selected rather different pieces this year. The fast, energetic choices of previous years were replaced by thoughtful, moving, beautiful songs, which turned out to be a stroke of genius on her part, reflecting the mood of these challenging times.

The first, Jenny, is a song about love and loss, a subject sadly close to the hearts of too many of our singers. The next, Der Abend, was, for me, moody and atmospheric, sung with our best German diction, and about lovers settling down to peaceful rest as evening approaches. The third, and our real pièce de résistance, was Flight Song, which we sang from memory, all about the communicative power of music, love and song. This last, an emotional piece, went down a treat

with the adjudicator, who was so moved by the warmth and sincerity of our singing that she made no notes of comment in her notebook but instead awarded the song the highest mark of the competition, resulting in MCS winning one of the four pieces of silverware brought home by Juliet.

In all, MCS won an impressive display of two cups, a silver plate (for the highest mark for an individual piece over the two days) and a silver chicken (more on that later). The larger of the cups was won by our 'ensemble' group, ably led by MCS soprano Tracy Kennington. A beautifully animated performance I thought, as I thankfully watched from off stage, impressed by the joy and confidence they exuded.

Competition it may be, but at the end of the day we are all united by the joy of music, and being supportive of each other always trumps our desire to win. So when an ensemble from a rival choir turned up, two men down, MCS did not hesitate to step in and compete for the other side. (Horsley Choral Society had been horrified to discover that their entire ensemble bass section had been struck down with Covid that morning). Mickleham, Horsley and Holmbury St Mary competed and performed on the Saturday. The evening performance to a full house, exceeded any expectations I may have had. How lucky were we, to have Melanie Marshall (currently performing in the West End musical, Only Fools and Horses) to be our soloist. Her voice is truly beautiful and my family did not stop raving about her all weekend.

I was fortunate that the choices given to Mickleham to perform that Saturday evening were gorgeous, and very accessible pieces. We opened with the Old Hundredth Psalm tune (Vaughan Williams) and moved swiftly on to A Little Jazz Mass by Bob Chilcott. The very last of these, Agnus Dei, will stay with me for a very, very long time. The music is absolutely beautiful, with the repeated phrase ... dona nobis pacem, dona nobis pacem echoing like a plea from the soul ... give us peace, give us peace. Very apposite: with all the recent news from Ukraine, singing this had a poignancy that took my breath away. The jazz theme continued with our rendition of the Porgy and Bess Suite,




Juliet and Tracy with the silverware

again accompanied by the orchestra Southern Pro Musica. The Feel the Spirit pieces, composed by John Rutter, made great use of the orchestra's harpist and oboe player, not to mention our wonderful soloist, Melanie Marshall who was herself involved in the creation of Feel the Spirit. Thankfully, the collected choirs, acting as the chorus, could relax and enjoy performing, as we felt safe in the capable hands of Festival Conductor, Jonathan Willcocks. One of those 'never a dull moment' kind of people, with a permanent mischievous twinkle in his eye, he never for one second made us feel that we should be honoured to be performing with him, but instead, gave us the feeling that he was utterly delighted to be working with us all, enthusiastic amateurs though we are.

So what about the silver chicken, I hear you ask? Well, it's called the Widenham Fosbery Silver Hen, and Mickleham won it for coming second overall, over the two-day extravaganza. Second that is, to Holmbury St Mary, (congratulations Holmbury!). Their conductor of the last 15 years Amy Bebbington, is now standing down. They will miss her.

Jacqueline Kenney



## BRAIN TEASER

*Can you translate this diagram into words? Say what you see.*

**STEP PETS  
PETS**

*Answer on page 26*



## Mickleham Parish Council

([www.micklehampc.org.uk](http://www.micklehampc.org.uk))

# Annual Parish Meeting

## Wednesday 25th May

### at 7.30 pm

### Ranmore Room, St Michael's Church

If you wish to attend please email: [clerkatmpc@gmail.com](mailto:clerkatmpc@gmail.com)



# Managing Time in the Garden

Over the last two years, our gardens have increasingly become an important distraction and a welcome place to relax. We invited Ben Pope to join us in the Stepping Stones pub, to share his experience and advice to help develop and maintain your perfect garden. Born locally, Ben has spent 24 years in horticulture and currently leads a team, developing and maintaining a private garden in West Sussex. He is also a regular contributor to Gardens Illustrated.

Ben's presentation covered two main areas, the first focused on creating a concept of time by focusing on the aesthetics of the garden; the second discussed how to manage time spent on garden maintenance.

Using his personal experience of reclaiming and managing his current garden, Ben illustrated the importance of observing surroundings, including nearby trees and landscape to frame the view and merge boundaries with

the garden. When making changes to the garden, using aged items like railway sleepers and terracotta pots help the garden look established and blend the old with the new. Structure is also important and here shrubs play an important role, especially in the winter creating form in flower beds, while self-seeding plants provide colour and detail during spring and summer months, filling in gaps and reducing cost and maintenance.

When planning or making change, factor in the time it will take to maintain the new area and also consider any labour-saving equipment. For example, if creating a new flower bed or path, use steel or tile edging for a clean, professional mowing edge. Doing jobs at the right time also saves time; by staking plants before they need support reduces time and effort if left until later, and allows the plant to grow up through the support and look natural. Ben is a firm believer in using mulch to manage



weeds by reducing growth. It also adds nutrients and retains water.

Finally, Ben explained how making notes about any future changes or jobs to be done later will help you to plan your time. If like me you are struggling with what you need to be doing in the garden now, Ben has created a helpful website full of useful information together with a monthly 'To Do' list of jobs for the garden: [www.theworkinggarden.com](http://www.theworkinggarden.com), Garden Diary.



Mickleham & Westhumble  
Local History Group

Visit to Juniper Hill

Wednesday 15<sup>th</sup> June

We will meet outside the house for a prompt 2.30 pm start. Booking is essential as numbers are limited to 20. Priority will be given to members who missed our first visit to Juniper Hill until **Wednesday 20<sup>th</sup> April**. Other members and non-members who would like to come can register their interest in the visit now. The event is free for members, £3 for non-members.

To reserve a place or for further information please contact Judith Long: [judith.long2@btinternet.com](mailto:judith.long2@btinternet.com) or 07904 160961



We have a few places left on our coach trip to Highgrove for a guided tour of these amazing gardens. We expect the garden to be very different from our previous visit which was in July 2019. We are unlikely to organise another visit there, so do not miss this final chance.

## Highgrove Gardens

### Friday 20<sup>th</sup> May 2022

Travelling by Coach leaving Mickleham at 8.15am stopping at Tetbury for coffee before the tour at 12.30pm.  
Lunch available at the Orchard Tea Room, after the tour.  
Returning to Mickleham at approximately 5pm

Cost £55 excluding refreshments - Booking is essential

See our website for details [www.gardenshed.club](http://www.gardenshed.club)

Any questions to Pauline Davis on 07759 646353

or [paulinemdavis@gmail.com](mailto:paulinemdavis@gmail.com)

# Mickleham Parish Council

At the Parish Council meeting held on 9th March in the Ranmore Room, much of the meeting was taken up with the Open Forum at which members of the public are encouraged to raise issues of particular concern to them. A number of people, including residents of School Lane, Byttom Hill and Anne Storey from the King William IV pub raised the issue of the restricted number of parking spaces available, especially now that 51 Degrees North, our new coffee shop, was about to open. The parking for the pub and the coffee shop is largely provided by the public car parking available on the Surrey County Council land bordering the A24, on the Mickleham side of the road. It was agreed that there is little that can be done to alleviate the problem other than to plan a more effective use of this section of land and the possible introduction of marked car

parking spaces. The use of the lay-by which used to exist on the either side of the A24 was no longer feasible as SCC highways would not support a lay-by leading on to a busy dual carriageway.

It was finally agreed that further research would be undertaken on this issue and a report made to the next Council meeting.

Some concern was also expressed about the illuminated signs on 51 Degrees North and the owners were made aware of these concerns as was the MVDC Enforcement Officer.

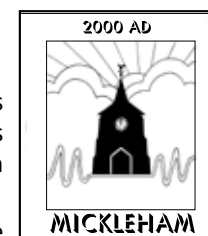
Chris Livett, the Estates Manager from Juniper Hill raised the issue of vandalism and trespass on the land adjacent to Stane Street from Headley Lane, where tracks have been created illegally by mountain bike riders, destroying a fence marking the estate boundary. It was agreed that it would be

helpful if residents reported incidents of trespass when seen.

Vandalism at the playground on the Recreation Field was also reported on two separate occasions in recent months and again residents were asked to report any unusual activity in the Playground.

Other issues raised included the plans for the forthcoming Queen's Platinum Jubilee over the weekend of 2nd to 5th June 2022, details of which are published in the magazine.

The Mole Valley Boundary Review report was soon to be published in draft form and the Mickleham Village signs on the A24 are to be renovated, hopefully in time for the Jubilee weekend.



## Some items in the Spring 2022 Plantlife Magazine

This season's edition of the Plantlife magazine contains some items of relevance to us all.

**No Mow May**, again: this national campaign last year was successful in parts as people followed the advice and were delighted to see what grew in their road verges and lawns. I encouraged Mickleham and Westhumble residents to do the same. Not only does allowing plants in one's grassland to flower look attractive, it also provides a nectar and pollen source for a range of insects. We must all know just how many insects have been lost over the years. Biodiversity loss and the climate crisis very closely linked. From 21st to 30th May Plantlife is also encouraging people to take part in their 'Every Flower Counts' survey by counting the number of flowers in a random square metre of your lawn. Enter your count on: <https://www.plantlife.org.uk/everyflowercounts/>

**Cowslip survey:** there is an international survey to estimate the proportion of the two forms of cowslip flower. There are actually two forms of cowslip and the difference is in the flowers. One is the 'S-form' where the male parts (the stamen) are easy to spot, but in the other, the 'L-form', only the top of the female part (the stigma) is

visible. In healthy cowslip populations, there are equal numbers of both forms of flower. However, this 50:50 ratio becomes imbalanced when the cowslip population declines, whether through loss of habitat or a change in agricultural practices. Knowing the ratio of these two forms in an area helps us understand more about the quality of our grasslands. This is where you can help: can you visit an area with cowslips and look at 100 individual plants, counting whether they are S-forms or L-forms? See <https://www.plantlife.org.uk/uk/discover-wild-plants-nature/cowslip-survey> for how to record and submit your results via a phone app. This sort of survey is quite fun and children enjoy doing it.

**Going peat-free:** I trust everyone knows the value of peat deposits in storing carbon and that these peat deposits should not be dug to provide garden compost? Once out of the wet ground that preserves peat, it soon degrades, breaking down to release carbon dioxide into the atmosphere. It is relatively easy to avoid buying peat in bags of compost by looking for peat-free ones. This latter compost is good and I have been using it successfully for rather longer than I care to remember. However, the horticultural trade still uses it widely.



This means that any plants we buy from a garden centre are likely to be grown in peat. There are some independents that use peat-free compost but they do have to be searched for. Plantlife has been campaigning for a long time for a peat ban but successive governments have all been slow to respond. Finally the English and Welsh governments have published plans to end the sale of bagged compost by 2024. Unfortunately for us all, this excludes the commercial use of peat. See <https://www.plantlife.org.uk/uk/our-work/campaigning-change/why-we-need-to-keep-peat-in-the-ground-and-out-of-our-gardens>

Ann Sankey



## Do you need a plasterer?

Over 25 years' experience working on extensions, renovations, new-build and conversion projects for builders and domestic customers alike.



Our work is to a high standard and we are fast. Give Chris a call for a free, no obligation quotation.

**CHRIS C GUY  
PLASTERING LTD**

ALL ASPECTS OF INTERNAL & EXTERNAL PLASTERING  
07740 860560 [chrisguyplastering@gmail.com](mailto:chrisguyplastering@gmail.com)

**We provide the best possible care for your feet**

**Book your appointment:  
01372 454583**



**Bookham  
Chiropody & Podiatry Clinic**  
Diagnosis, Expert Treatment & Professional Care  
for Your Feet

**29 High Street, Great Bookham KT23 4AA**  
[www.bookhamchiropody-podiatry.co.uk](http://www.bookhamchiropody-podiatry.co.uk)

## Domestic Appliance Repairs

30 years' experience repairing and installing all gas and electric domestic appliances



- Cookers Microwaves
- Dishwashers
- Washing machines
- Fridges / Freezers
- Water coolers
- Coffee machines
- Tumble dryers

**Contact: Andy 07895 719706**  
[andy@kirksdomestics.co.uk](mailto:andy@kirksdomestics.co.uk)



07871 051661 / 01372 458616  
[timskerrittgroundworks.co.uk](http://timskerrittgroundworks.co.uk)

**TimSkerritt**  
LANDSCAPE & GROUNDWORKS

## Turn your vision into a reality

Tim Skerritt Landscape & Groundworks offers a comprehensive range of services to both commercial and domestic clients across Surrey.

From hard landscaping to extensive site excavations, we offer a high quality, honest, reliable and competitively priced service, guaranteed to meet all your needs. Contact us today to find out more.

## A25 ELECTRICALS Domestic & Commercial

- Electrical Installations
- Alterations
- Expertise in Fault Finding
- Condition Reports

**07760 852 540**  
Part P Approved

## PAINTING DECORATING

ANDREW CLARK 07800 796 737

INTERIOR & EXTERIOR • CARPENTRY • HANDYMAN

## Dorking Pest Control Services

Local Authority Approved Contractors



Our Services include: Wasps Bee Swarms Hornets Rats Mice  
Squirrels Fleas Flies Ants Cockroaches Bed Bugs  
Rabbits Moles Foxes and Deer



• Domestic Commercial and Industrial • Contract Work • Preventative Control Programmes

**Experts in pest control throughout Surrey**

Office: 01306 743001 Ivor: 07710 117491 Chris: 07971 519415

[www.dorkingpestcontrol.com](http://www.dorkingpestcontrol.com)

## Cryptic Delicacies



Last month's puzzle had golden squares pointing to someone who would become famous for FATHER GOOSE, CHARADE, HOUSEBOAT, SUSPICION, and NORTH BY NORTHWEST. The star who appeared in all those films was Cary Grant, but I did not think that name gave enough letters as extra clues in the golden squares so went for his original name of ARCHIBALD LEACH. That of course added extra fun to the puzzle. He did more than just transform his name after what has been described as a horrendous childhood in Bristol, the son of an alcoholic clothes factory worker and a clinically depressed seamstress who was put into a mental hospital by her husband when Archibald was nine years old (he was told that she had died and only discovered she was still alive when he was 31). That gives an idea of why he might have wanted to transform himself or in his own words, *'I pretended to be somebody I wanted to be, until finally I became that person, or he became me'*. That sounds like a decent philosophy of life though how much we can find happiness through sheer force of will is up for debate, and five marriages maybe points to ongoing struggles. He rated his production of a daughter more highly than any of his films but still it is quite a legacy to have given so much joy to the world even into the present day. There are usually several of his films available on iPlayer, though currently not my favourite, FATHER GOOSE. Here are some of the clues worked out, with definitions underlined:

**1 Hung around in suit being exceptionally keen (4,2)**

**GUNG HO**

'Hung around' points to an anagram of HUNG which is then put in GO (= 'suit' as in 'that tricorn hat and the tutu just do not GO'). I thought GUNG HO must have come from the British Army's time in India, but it is much more recent and from a different part of the East. 'Gōnghé' was the

slogan of the Chinese Industrial Cooperative movement started in 1937 and means something like 'work together'. During the Second World War, Lt Col Evans Carlson thought it embodied the spirit he wanted in his US Marine raiders, so appropriated it with added twang into what became known as the Gung Ho Battalion.

**4 Pop in to throw scarf at her (6)**

**FATHER**

This seems to have thrown a few people and then elicited a groan when they realised its simplicity. You need to stop seeing 'pop in' as a combined phrase. 'Pop' is a diminutive of father, 'in' is an indicator for a hidden word, which you can find in 'scarF AT HER'.

**12 After cruising round Eddystone starts to make for land (4)**

**ACRE**

'starts' means you take the first letters of the preceding words to spell A C R E

**13 Deliver broadcast audio authorization (3-2)**

**SAY-SO**

'Deliver' = SAY, 'broadcast' = sow, the audio of which is SO

**24 He dared to spin round Queen Elizabeth I as she appeared (7)**

**REDHEAD**

'to spin round' is an indicator to anagram HE DARED, and Elizabeth I was famously a redhead. There appears to be all sorts of conjecture as to the exact colour and even whether she had any hair at all under her fashionable red wigs (some people seem to think all her hair fell out when she was 29), pictures from her youth show a golden orange colour, and it did run in her family – her father Henry VIII & sister Mary I were also redheads. It does seem amazing that the exact details of the appearance of someone so prominent and famous should still be disputed, but photographic technology had some limitations at the time and apparently her desire to

project the right image to her subjects led to her sitting for a very few painters and exercising her power of veto over the results (which were then widely copied by others). Historians have combed first-hand accounts for details so, strangely, the truth of her appearance seems more likely to found in words than pictures. Good luck to the historians of the future when they come to working out the truth of what on Earth is going on today.

**26 Kept sober in audition (6)**

**STAYED**

'Sober' = staid, which sounds like STAYED

**7 What when put on horse can make it faster but when put on bicycle will make it slower? (9)**

**RIDERLESS**

This is more of a riddle than a standard cryptic clue (and unusually for me there was another at 2 DOWN to give NIGHTLY). A RIDERLESS horse is faster than one carrying the weight of a rider, whereas a RIDERLESS bicycle will not even stay upright for very long, let alone move at any speed.

**19/15 Twenty horns throb balefully on the way from Kyiv to Riga (5,2,9)**

**NORTH BY NORTHWEST**

'Balefully' is an indicator to anagram what precedes it, and when I was setting the clue it was very helpful to find that the direction from Kyiv to Riga almost exactly matches NNW (i.e. halfway between North and Northwest, or 337.5 degrees on the compass). This was a key clue to cracking the whole puzzle and I hoped that making it an obvious anagram would give a good route into the rest. It has become apparent that I may have been wrong.

I hope this helps and it would be great to get any feedback via [andrewt@andrewtatham.co.uk](mailto:andrewt@andrewtatham.co.uk)

Andrew



**10 Year**  
Manufacturer's  
warranty available  
with any new boiler  
Oil, LPG and Gas Registered • Consult • Design • Install • Maintain

**SEENERGY**  
INNOVATIVE ENERGY SOLUTIONS

Call for a free quote on  
**01306 735499**  
[www.seenergy.co.uk](http://www.seenergy.co.uk)  
[enquiries@seenergy.co.uk](mailto:enquiries@seenergy.co.uk)

EMERGENCY  
24  
HOUR  
SERVICE

Best Buy  
Which?  
Gas Boilers September 2016

**Get IT Fixed, Get IT Connected**  
Expert Repair & Maintenance




Brockham based. No call out charges. Fully transparent quotations with no hidden costs. We make technology work for you.

Call us now on **01737 845980** ChalkHill Systems  
[www.chalkhillsystems.co.uk](http://www.chalkhillsystems.co.uk)

**M & R BUTLER**

- GENERAL HOUSE MAINTENANCE
- EXTERNAL & INTERNAL DECORATING
- BESPOKE CARPENTRY
- LOCAL REFERENCES
- 40+ YEARS EXPERIENCE

07776256131 / 07896015771



**TONY WINCH**  
CARPENTER, JOINER  
& CABINET MAKER  
[www.tonywinch.com](http://www.tonywinch.com)  
**01306 742373**  
**07969 016 924**

**Building Plans**  
For home improvements & extensions  
Including planning & building regulations  
Fast efficient service at competitive rates

**MICHAEL LLOYD** CEng MICE  
For free consultation:  
Phone: 01483 205479 or 07958 791 402

**RWP**  
Extensions and alterations often require a  
Structural Engineer

**Robert Wynter & Partners Ltd**  
**01306 879875**  
Book House Vincent Lane  
Dorking RH4 3HW

**remedial roofing**  
For people with roof issues and deficiencies

- New roofs – slate & tiled roof specialists
- All roof repairs, moss removal & gutter clearance
- Flat roofs, traditional felt & GRP fibreglass
- New uPVC Fascia, soffit & guttering

Obtain an up-to-date report of remedial roofing on [www.checkatrade.com](http://www.checkatrade.com)

ALL WORK GUARANTEED  
Call us today for a FREE quotation on:  
**01306 304736 | 07852 833802**  
[info@remedialroofing.co.uk](mailto:info@remedialroofing.co.uk) [www.remedialroofing.co.uk](http://www.remedialroofing.co.uk)

Confederation of Roofing Contractors  
The Premier Roofing Trade Association in the UK  
All Members Offer Insurance Backed Guarantees

Cheekatrade.com  
SURREY  
TRADING STANDARDS  
APPROVED



Spring has  
certainly sprung!

We had that delightful little flurry of good weather mid-March, which was enough to excite us into having water play out in the nursery. We made little foil boats with the children and played with items discovering what might float and what might sink. Obviously a little ahead of ourselves as the following week we had the smattering of snow! Luckily our chicks waited until after the snow to hatch, but some little hands still needed to be warmed by bean bags before chick handling.

Children enjoyed learning about the life cycle, were thrilled to watch a chick hatch during the nursery morning and were delighted to be able to handle them as bundles of fluff.

We had five chicks, one was born with splayed legs which Hilary reset with a surgical tape brace. Despite our best efforts, the splayed-leg chick did not make it.

This year we planned our hatching to match with the nursery Easter calendar, supporting the children's understanding that Easter Eggs, chicks and rabbits are symbols of new life. We read an early years-friendly Easter story and also went to visit the church. We had a few challenging questions regarding the splayed-leg chick and could it too come alive again.

As we move into the summer term one of our first themes will be celebrating the Queen's Platinum Jubilee.



Left top and centre: handling balls of fluff; below: checking eggs in the incubator; right top: studying which comes first - chicken or egg? below: walking to church.



Mickleham Village Hall  
**AGM**  
10 am Saturday 21st May  
In the Hall All welcome





## Mickleham Village Hall Dell Close

Weekdays 9.15 am - 12.15 pm (term time)

### WITH OPTIONAL LUNCH CLUB

On Mondays and Thursdays there is the option for children to stay until 2.45 p.m.

Maximum 26 children per session

• playing naturally • learning naturally

We offer an excellent range of pre-school activities for 2½ to 5 year-olds where they can learn through play in an informal friendly atmosphere.

Contact us for more information about admissions

01372 361021 [www.stmichaelscommunitynursery.co.uk](http://www.stmichaelscommunitynursery.co.uk)

### Answers to the April crossword

**Across:** 1 Gung ho 4 Father 8 Cough up 9 Charade 11 Centrefold 12 Acre 13 Say-so 14 Gangster 16 Isolated 18 Ranks 20 Kiln 21 Mouth organ 23 Minions 24 Redhead 25 Nugget 26 Stayed

**Down:** 1 Goose 2 Nightly 3 Houseboat 5 Aphid 6 Hurrahs 7 Riderless 10 Bongo drum 13 Suspicion 17 Lancing 19/15 North by northwest 21 Mince 22 Award

Answer: One step forward, two steps back

## Suitable items for the foodbank collection

Tinned veg / tomatoes / soup / sauces / baked beans	Washing-up and cleaning products
Powdered milk / UHT milk (green and blue only)	Tissues / paper towels / tampons
Rice pudding / long life sponge puddings	Men's / women's toiletries
Coffee / tea bags / long life fruit juice	Laundry products
Pasta / rice / pulses / instant mash	Nappies
Jam / honey / marmalade / spreads	Pet food
Sugar (500g bags only)	

**Please do not include  
out-of-date items or those  
that require refrigeration**



### LOCAL FOOD BANK COLLECTION POINTS

#### MICKLEHAM

Garden Corner off Old London Road  
Mary Banfield 01372 373912

#### WESTHUMBLE

St Anthony, Pilgrims Way  
Sue Tatham 01306 882547

## Vivien Cresswell Made-to-measure Soft Furnishings

Curtains Roman Blinds Cushions



Extensive range  
of fabrics

01737 843858

[info@cresswellscurtains.co.uk](mailto:info@cresswellscurtains.co.uk)

[www.vivienecresswell.co.uk](http://www.vivienecresswell.co.uk)

## Julie Watts Family Law

AN AFFORDABLE AND EXPERIENCED PROFESSIONAL  
ALTERNATIVE TO TRADITIONAL SOLICITORS

• Divorce • Arrangements for children • Finances  
• Court Proceedings

PROUD TO PROVIDE A DIFFERENT KIND OF SERVICE

• Affordable fees • Straight-talking advice  
• Practical real support

Contact me for a consultation

07808 572157 [juliewattsfamilylaw.co.uk](http://juliewattsfamilylaw.co.uk)

## Spring Round Up

### Mother's Day

We had our first Mother's Day assembly in a while and all the mums who came along, were delighted with the beautiful words and pictures that their children had to share with them. The morning began with the mums being welcomed into the hall for tea, coffee and cake and a chance to chat. The assembly followed and there was not a dry eye in the hall by the end of the morning.

### Easter Church Service

For the first time, in a long time, we were able to celebrate Easter in church with the children and their families. This felt very special and the children thoroughly enjoyed being able to experience a school church service. It was daunting for them to have an audience, especially our Year 2 children, who have experienced very few events with their loved ones watching. All the children certainly rose to the challenge and did themselves, the school and their families proud. Reverend Faccini helped lead the service and discussed what a significant time Easter is. It was also lovely to walk with parents to and from the church. Although it was a bitterly cold day, our spirits were not dampened by this and we all enjoyed each other's company and appreciated the opportunity to get together for this important occasion.

### Fantastic finish to our 'Fire' topic

In last month's edition, I discussed our history topic 'Fire' and how this was based around the Great Fire of London. The children were fully immersed in the topic which included a theatre company visit. To end the topic, the children made Tudor houses in DT lessons, ready to burn as a re-enactment of the actual event. Our youngest children were also involved and this caused great excitement across the whole school. The houses were placed next to each other across two streets on the playground, just as they would have been in 1666. The first house was then lit! The children were kept at a safe distance but close enough to watch how quickly fire can spread and the devastating effect it would have had on the houses. It was a wonderful way to end the topic and the excitement lasted the whole of the final day of term.

### Readathon

Miss Chapman, our English Lead at St Michael's has been busy promoting the charity 'Readathon' event with our families, to both encourage a love of reading and to give something back to those less fortunate. The children were sponsored to read as many books, magazines and leaflets as they could over a few weeks and be sponsored to do



**St Michael's  
School**

[stmichaels-dorking.surrey.sch.uk/](http://stmichaels-dorking.surrey.sch.uk/)

so by family and friends. The money raised will help buy books for school and bring the power of stories to children in hospitals across the county, via their mobile bookcases and resident storytellers.

### Summer on its way

Now that we are three-quarters of the way into the academic year, we are busy planning our final term and thinking about summer events such as Sports Day, the Queen's Jubilee celebrations and transition arrangements. This is the first academic year that we have managed to keep all children in school without a significant break. We can see how much the children have benefited from this continuity in education, not to mention the social and emotional benefits this has brought. Here's hoping for a sunny start to the summer term.



Left: Readathon;  
right top: Tudor  
houses; below:  
London's burning.



**Please let the Jubilee Committee know if you plan to attend the grand Jubilee lunch on Sunday 5<sup>th</sup> June. See page 9.**



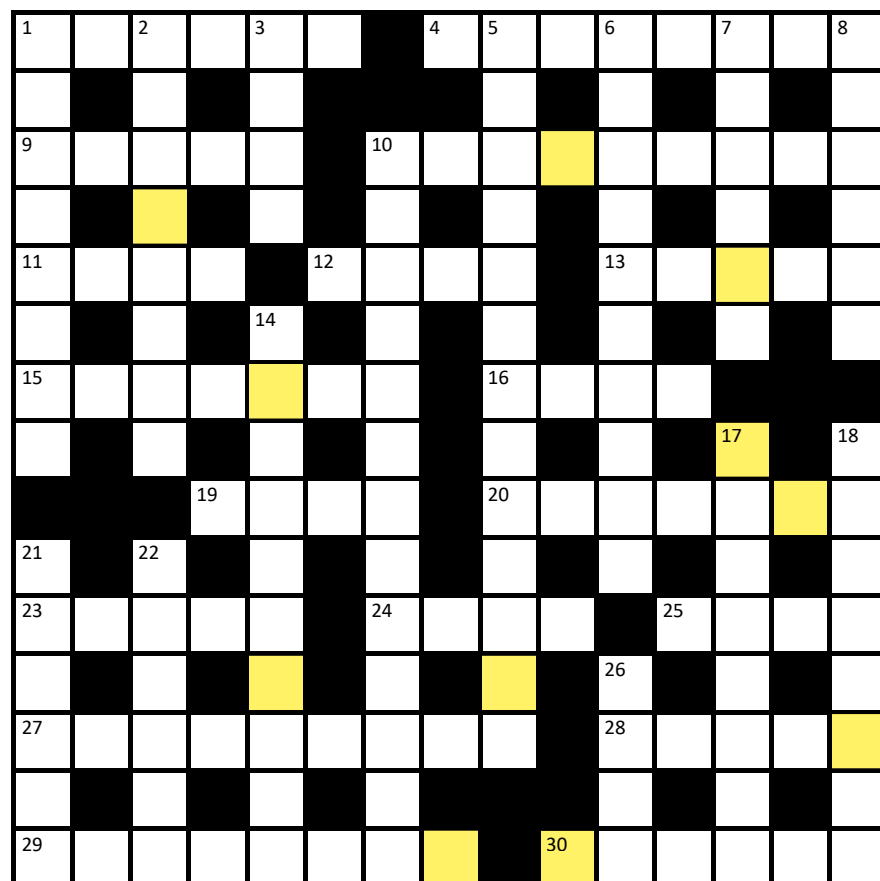


## Cryptic Crossword

The golden letters can be made into a 10 known for 9 18, 8 7, & 21 (4,7)

Across

- 1 Has sex and when asked 'does this belong to a James Bond?', answers in the affirmative (6)
- 4 Having an odd show of pride when being led by big business is typically American (5,3)
- 9/18 Sly dog dangled contraption to apprehend flying beastie (5,4,4)
- 10 Trail left by golden 10D after a routine performance? (4-5)
- 11 Was escort embracing centre forward in a lascivious way? (4)
- 12 Heard 11-0 is how this game turned out (4)
- 13 Provide with final uniform on heading to execution (5)
- 15 State developed casual agreement in the production of cheese (7)
- 16 Court rulings sound kind of crackers (4)
- 19 Force to go out with mule as an example to those in hearing (4)
- 20 Change in tempo to give some spice (7)
- 23 Working with press announcement item that can make you cry (5)
- 24 Awaited the time for performance of golden 10D and 22 1A in both 25 and 28 (4)
- 25 Yesterday might be in part the reason given for sudden change (4)



- 27 Posh girl after getting off her face on charlie (4-5)
- 28 Cut a rug and get vigorously caned for it (5)
- 29 For instance: 'The 39 Steps to Electrify Something on a Postbox' (8)
- 30 Odd numbers are essentially the same as evens (6)

Down

- 1 Rosy gets tired and wavers when trying to irritate a bull (3,5)
- 2 It's horrendous that it's up to Dilyn in No. 10 to provide an example by ignoring the leader in abiding by the law (3-5)
- 3 Speak up, sunshine! (4)
- 5 Shah got proper treatment for shooting lovers (13)
- 6 My cult poem about invasive

- surgery (10)
- 7 March is when Sally is caught running after Dad (6)
- 8 Take part in least erudite demonstration of Christian belief (6)
- 10 Hot enema should evacuate the bottom in last resort for celebrity (9,4)
- 14 After a visit to the butcher's, I cancel ham without thinking (10)
- 17 Present naughty nun with a cone (8)
- 18 See 9 Across
- 21 Monopoly might force you to touch this hot potato if not too agitated (3,3)
- 22 Begin German lesson whilst hand is holding zip (6)
- 26 Head start for creep (4)

Andrew Tatham

Wood anemones are flourishing this year

Photographer Ben Tatham



## Need help with your accounts?

Running a business needs time and energy – don't waste your time working on your accounts when you can work on your business instead!

At a4c we provide fixed fee accountancy solutions with friendly support throughout the year. Services include accounts, tax returns, VAT, payroll, book-keeping etc.

Friendly, approachable and local to Dorking – we enjoy getting to know our clients so call us today for a no obligation chat.

**We LOVE numbers so YOU don't have to!**

**01737 652852**

esther@a4cgroup.co.uk

www.a4cgroup.co.uk



**RANMORE RENOVATIONS**

## LOCAL BUILDER

New bathroom installation specialist,  
plumbing/heating,  
electrics, plastering & tiling,  
decorating, Karndean flooring.  
All building works and property  
maintenance undertaken.  
All works guaranteed  
36 years' experience

Please contact Damian  
07940 599845 / 01306 880332  
musgrovebuild@gmail.com



**01306 88 55 33**

For quotes or to make a booking  
email us on: [Enquiries@dorkingtaxis.co.uk](mailto:Enquiries@dorkingtaxis.co.uk)

[www.dorkingtaxis.co.uk](http://www.dorkingtaxis.co.uk)

- 4 / 6 / 8 Seaters
- Airport specialists
- Ferry ports & Eurostar
- Courier services available
- Home to School Transport service available
- Long distance journeys welcome
- All drivers & vehicles are fully vetted by MVDC & Surrey County Council
- Lady drivers available on request
- All major card payments accepted



A local, award-winning business supporting people living in Epsom and Mole Valley, enabling them to remain living independently AT HOME as well as providing companionship and colour to peoples lives.

**RATED AS OUTSTANDING BY CARE QUALITY COMMISSION**

Committed to providing a quality, trusted and consistent home care service, we only recruit local CareGivers and match every CareGiver to every client so the same person will call each time.

**01372 741544**

[simon.burrowes@homeinstead-epsom.co.uk](mailto:simon.burrowes@homeinstead-epsom.co.uk)

[www.homeinstead.co.uk/epsom](http://www.homeinstead.co.uk/epsom)

**John Wadsworth**



CALL NOW FOR YOUR FREE VALUATION  
**01372 450500**

[www.johnwadsworth.co.uk](http://www.johnwadsworth.co.uk) [sales@johnwadsworth.co.uk](mailto:sales@johnwadsworth.co.uk)  
A professional efficient and friendly service






**RESIDENTIAL • COMMERCIAL  
AGRICULTURAL • SCHOOLS • ACOUSTIC  
HOARDING • GATES • SECURITY**

**RICHARDSON & BRADS FENCING LTD**  
**T: 01306 640 143 - 01483 414 745**  
 E: INFO@RBFENCINGLTD.CO.UK  
 W: WWW.RBFENCINGLTD.CO.UK  
 A: 168 SOUTH STREET, DORKING, SURREY, RH4 2ES  
 UNIT 45 MARTLANDS INDUSTRIAL ESTATE, SMARTS HEATH LANE, MAYFORD, GU22 0RQ

# J S Wilson

**Mickleham**

## Carpentry & Building Services



Extensions ~ Conversions  
 Refurbishments ~ Property Maintenance  
 Fully guaranteed ~ Fully insured  
*One call WILL solve it all*

Contact Jason on: 07761 926684 or 01372 379359  
 info@jasonswilson.co.uk



## MEABY & Co

solicitors

**Strength & wisdom in law & business since 1848**

---

Meaby & Co Solicitors sits proudly in the heart of Dorking High Street providing expert legal advice to individuals and businesses throughout the town and its surrounding area. With additional offices throughout London, our experienced team, our 5\* Google reviews and award winning service will ensure that all of your legal needs are supported on your doorstep.

**Specialising in:**

Residential & Commercial Property	Fraud & Private Crime	Reputation Protection
Wills, Trusts & Probate	LGBT Experts	Commercial & Corporate Law
Litigation and Mediation	Employment Law	Media & Entertainment
Crisis Management	Family & Divorce Law	Lease Extensions

---

Drop by our offices at 159 High Street, Dorking RH4 1AD or contact our switchboard on 01306 884432.  
 Need advice elsewhere? We can assist. We have branch offices in Camberwell, Soho & Chigwell.

**Switchboard:** 01306 884432 [www.meaby.co.uk](http://www.meaby.co.uk)  @MeabyandCo  meaby-&-co  MeabyandCo  meabyandco

