

# MICKLEHAM PARISH Magazine

A community magazine for Mickleham and Westhumble



A.N. Colwell 1984

March 2022



## PROFESSIONAL CARPET & UPHOLSTERY CLEANING

- Local family running company
- Over 100's 5-star Reviews
- Award-Winning Customer Service
- Safe for Kids, Pets, and the Environment
- Effective against dirt & stains from drinks, food, makeup, pets & more

**SURREY  
MAIDS**

### REGULAR CLEANING

- Professional Equipment
- Trained Staff
- DBS Checked
- Flexible Hours

### DEEP CLEANING

- Moving out/in services
- Seasonal Cleaning
- Oven Cleaning
- Commercial Cleaning
- Tenancy
- Windows Cleaning
- Schools

**PATTY PLUS** 01306 866288  
SERVICES LTD OFFICE@PATTY.PLUS  
WWW.PATTY.PLUS

## Bullimores



Accountants for Life  
Tax • Accounts • Probate  
Inheritance Tax &  
Executorship

T: 01306 880880

E: partners@bullimores.co.uk

W: www.bullimores.co.uk

Bullimores LLP licensed to carry out the reserved legal activity of non-contentious probate in England & Wales by the ICAEW



# Stepping Stones

**Platinum Jubilee Celebrations**

**Friday 3rd June from 3 pm**

Afternoon Tea Party Hat Competition Beacon Tart  
Acoustic Live Music

**Saturday 4th June from 2 pm**

Live Music Large Screen Broadcast Outdoor BBQ  
Children's fancy dress

Part of the  
Mickleham and Westhumble  
Community Celebrations

01306 889932  
steppingstonespub@gmail.com  
www.steppingstonesdorking.co.uk

Please check website for up-to-date menus,  
events and current opening times

## Sherlock Funeral Service

*Sherlock Funeral Service is an  
Independent family owned business,  
established over 100 years*

- Private Service Chapel & Rest Rooms
- Home visits arranged if required
- Pre-Paid Funeral Plans available
- Free Parking

Telephone: 01306 882266

Trellis House, 190 South Street, Dorking RH4 2ES.

Email: office@sherlockandsons.co.uk



**Funeral Directors & Monumental Masons**

# MICKLEHAM PARISH Magazine

March  
2022

## Mickleham Parish Magazine

A community magazine for  
Mickleham and Westhumble  
published under the auspices  
of Mickleham PCC with an  
independent editorial panel.

The magazine is published at  
the beginning of each month  
except January and August.

COPY DEADLINE  
APRIL MAGAZINE  
Sunday  
6<sup>th</sup> March

send to:

Sue Tatham  
St Anthony, Pilgrim's Way  
Westhumble  
Dorking RH5 6AW  
01306 882547  
editor@micklehammag.co.uk

Contributions in any form  
are welcome as are good  
quality photographs. There  
is no charge for advertising  
local charity and community  
events. However the editors  
reserve the right to shorten  
omit or reformat articles  
submitted for publication  
depending on space.



Printed by Holbrooks Printers  
Portsmouth

Mickleham Rectory

Hello everyone

I rejoice that Spring is well on the way and am now looking forward to Lent. Maybe you do not see Lent as something to look forward to? As I have thought about Lent two things have been very helpful: one positive and one not.

I am sure like me you have been shocked by the 'partygate' allegations. The very thought of self-indulgent politicians, civil servants and other Downing Street staff holding parties during lockdown seems such a betrayal, as the rest of us endured loneliness or were unable to attend funerals, meet with family, friends or in some cases even go out. It was more than thoughtless; it was self-indulgent and arrogant. They assumed they could have what they wanted, even if most of us could not. There was also dry January. Christmas tends to highlight our failings and one of them is always desiring more, in this case more alcohol. In the Bible desire has led to many a downfall: from Eve desiring forbidden fruit to King David desiring someone else's wife.

In some cases, acting on a desire can lead to broken marriages, debt, ill health and even prison. Extreme perhaps but it does highlight why self-control is so important. However, is all desire a human failing? We can have good desires as well. Desiring the happiness of another, justice or peace are good things. Making donations to charity, motivated by a desire to help others in need is a great thing to do. I believe though that the best desire of all is to want to encounter God. God has created us to have a spiritual hunger or as some describe it, a God-shaped hole inside our hearts. Without that desire how many would seek God? I can tell people how great God is, how loving or merciful but unless they want to find out more, it will not make any difference.

Sometimes that desire can be sparked by experience of love and goodness. Perhaps when we are generous it gives a glimpse of the God who is so generous to us. Sometimes we are inspired by something of beauty, a need or even a tragedy.

Lent is a time when Christians seek to exert control over selfish desires and give up something which distracts us from seeking and loving God or stops us caring for our neighbour. Here I include both people and our world. Combating climate change helps the poorest communities which are most vulnerable to these changes. Lent gives everyone 40 days of opportunity to change and make a worthwhile difference.

Some ideas I am considering include reducing time spent looking at my phone, changing to more environmentally-friendly household products, giving up meat and using more local produce to help the environment. There are also the more traditional ideas of giving up chocolate, alcohol or other indulgences if they have become addictive or too important to us. In Lent we are also encouraged to take up something whether that be giving more money or time to a charity, prayer, Bible reading, attending a Lent course, or spending more time with relatives who may be lonely. I guess the list is endless but as we prepare to start Lent on 2nd March (Ash Wednesday) let us resolve to fix our desires more on what is good, holy and of God than on what is selfish and inconsiderate.

I wish you a Lenten period full of positive and helpful desires and may God bless you in whatever good you choose to do as a result.

Best wishes

*Sandra*

The Rev Dr Sandra Faccini, Parish Priest





## St Michael's Church Services

See calendar on centre pages for details of all services

10 am Sunday Services also available on Zoom

Joining information for both Zoom and telephone users is available in Pews News Online each week. If you would like to join us by Zoom then contact Alison Wood for the codes or to ask her to include you on the emailing list for Pews News: [admin@micklehamchurch.org.uk](mailto:admin@micklehamchurch.org.uk) / phone 01372 376443. We hope as many of you as possible will be able to join us for worship.

Please refer to Pews News Online for the latest information. If you missed any of the services, or would like to revisit them, all are available on the church YouTube channel:

<https://youtube.com/channel/UCl4pbewCT91iZhcd0EjJBlw>



## First Saturday of the month Coffee Morning at Westhumble Chapel

Come along between 10 am and noon for coffee and cake £1. Free drinks for children

Saturday 5<sup>th</sup> March

Everyone welcome

For further information call Jonathan Blake 07787 126966



## Mothering Sunday 27<sup>th</sup> March

### Children's Workshop

St Michael's School from 9.15\* to 10.45 am

All accompanied local children welcome – Fee £4

followed by

## Mothering Sunday Family Service

St Michael's Church at 11 am

\* **Note earlier workshop starting time**

For information

[hollieayling@hotmail.co.uk](mailto:hollieayling@hotmail.co.uk)

## Men's and Women's Saturday Breakfasts at the Stepping Stones

9 – 10 AM

*A social gathering open to everyone*

### WOMEN'S BREAKFAST

3<sup>RD</sup> SATURDAYS

19<sup>TH</sup> MARCH

Book with: Stephanie Randall

0773 6933 482

[srandall55@gmail.com](mailto:srandall55@gmail.com)



### MEN'S BREAKFAST

4<sup>TH</sup> SATURDAYS

26<sup>TH</sup> MARCH

Book with: Andy Diamond

[diamo1@hotmail.co.uk](mailto:diamo1@hotmail.co.uk)

## Lent Groups

5 sessions

Mondays

7<sup>th</sup> March to 4<sup>th</sup> April inclusive

7.45 pm - 9 pm at Burney Road

Contact Amanda Wadsworth 01306 743164

[aewadsworth@hotmail.com](mailto:aewadsworth@hotmail.com)

Thursdays

3<sup>rd</sup> March to 31<sup>st</sup> March inclusive.

11 am - 12.30 pm at Westhumble Chapel.

Contact Alison Wood 01372 376443

[Alison.wood29@btinternet.com](mailto:Alison.wood29@btinternet.com)

The first session is the day after Ash Wednesday..

Both groups will be looking at the York Course 'Caring for Creation'.

The cost of the booklet is £3.30.



## St Michael's Church Community Group



## Mickleham Village Hall

12.30 pm

Delicious soups and bread  
No charge but donations will  
go to local charities

RSVP to HOSTS:

- 9<sup>th</sup> MARCH: Mary Banfield: 01372 373912
- 16<sup>th</sup> MARCH: Alison Wood: 01372 373912
- 23<sup>rd</sup> MARCH: Jenny Hudlass: 01306 886044
- 30<sup>th</sup> MARCH: Wendy Wyatt: 01372 376443
- 6<sup>th</sup> April: Liz Absalom: 07801 791123

OR

Sign the lists at the back of church

OR

E-Mail Alison Wood: [admin@micklehamchurch.org.uk](mailto:admin@micklehamchurch.org.uk)



**Please support our Food Bank collection  
see page 19 for a report from the  
Dorking Area Food Bank**

## Parish Magazine Annual Report 2021

The past year was again overshadowed by the Covid-19 pandemic, with stringent lockdown regulations over a lengthy period. However, we felt it was important to continue publishing the magazine in order to convey information about what was happening locally especially for residents without access to smart phones and/or computers. Again, deliveries required most of the adjustment, but volunteers were willing to use part of their hour of

outdoor exercise to deliver their magazines.

Our printing costs were less this year as we changed printers who gave us a lower price and we reduced the print run slightly as the church and other places which distribute spare copies were closed. However, we have been warned that next year's printing expenses will go up as the cost of paper has risen by 30%.

Again, we are extremely grateful to all the many people who have

helped us with the magazine this year. We welcomed Barbara Jones to the Editorial Panel. We were very sorry to say good-bye to our administrator, Fiona Roberts-Miller who moved to Dorset in June. She is much missed. Fiona's many tasks have been allocated, albeit some on a temporary basis. We continue to seek new people to join the editorial panel or help with editing and layout. The future viability of the magazine is a great cause of concern.

Sue Tatham and Charlotte Daruwalla  
Co-Editors



Superb professional  
cleaning of carpets  
oriental rugs  
upholstery curtains  
and leather  
Guardsman  
anti-stain protection

- spot stain and odour removal
- leather cleaning specialists
- flame retarding
- dust mite reduction service
- all work fully insured & guaranteed

For a free no obligation quotation call today  
Freephone 0808 144 9071  
John Joannides 28 Bracken Close Bookham

**Safeclean**  
*The furnishing care specialists from GUARDSMAN*



*Pinehurst  
Rest Home*

*We aim to provide an excellent service at competitive rates supporting emotional physical and social needs of our clients always respecting and protecting their status as adults.*

- Residential and 24-hour daycare
- Excellent cuisine
- Facilities for disabled: medic bath / lift
- Home doctor in attendance
- Single & sharing rooms
- Convalescent & short stays
- Lounge with TV & piano
- Separate dining room
- Physiotherapist chiropodist & hairdresser
- Entertainment: theatre visits / parties & cabarets held on premises

**National Trust Road Box Hill**  
Mickleham Dorking Surrey RH5 6BY  
Telephone: 01306 889942 / 888253

*Dorking  
Decorators*  
PROFESSIONAL  
PAINTERS & DECORATORS

**Established Local Family Business**

- Over 20 years' experience
- Internal & External
- Commercial & Domestic
- Friendly, First Class Service
- Surrey / Sussex / Greater London

**FREE ESTIMATES**  
**01306 640418**  
**www.dorkingdecorators.co.uk**  
As approved by Checkatrade

**CHRIS HULME**  
*Garden Machinery*

*Service and repair of all makes and models of:*

- Ride-on mowers
- Rotary mowers
- Cylinder mowers
- Chainsaws
- Strimmers
- Hedge cutters
- Rotavators
- Blower vacs

*Quality secondhand machinery  
Collection and delivery service*

The Barn Cowslip Lane Mickleham 01372 377757 / 07950 961606

**PRIVE**  
LUXURY HAIR SALON

8 High Street, Leatherhead  
01372 360302

[www.privelondon.co.uk](http://www.privelondon.co.uk) i prive\_leatherhead



**SIMON HOOPER**  
**For all your decorating needs...**

Professional friendly and speedy service at all times

- Fully insured
- Insurance work
- Exterior painting
- Interior decorating
- Free quotes & advice
- Oil & Water-based products
- Commercial / Domestic work
- Wallpaper hanging & removal

07947 135 376 0208 3978 962  
[www.slhdecoratingservices.com](http://www.slhdecoratingservices.com)



## Joyriding deterrents



In early January there was another instance of damage to the Gallops on Mickleham Downs by joyriders. In December 2021, SCC had positioned large concrete blocks at five access points to the Downs along Headley Lane and Reigate Road, but they neglected to block off the southern access to Stane Street near Juniper Hill. A block was placed here later in the January.

Stane Street is a byway with a TRO (Traffic Regulation Order) which bans its use by motor vehicles with four or more wheels. You will see in the photograph that the block has been placed at an angle so as to leave a 5-foot gap so that it can be accessed by lawful users eg walkers, horse riders and cyclists.

Ben Tatham



Westhumble  
Residents  
Association

**AGM**

Wednesday  
30th March

8 pm  
at the Chapel,  
Westhumble



# Mickleham and Westhumble Local History Group

## Social History of Mickleham Village Hall over the Decades

### Part 1 1901 – 1930

Work on building our village hall began in 1901, funded by Mrs Evans of Dalewood in memory of her husband, Mr David Evans, a renowned silk merchant whose clients included William Morris and Liberty's. The foundation stone was laid by Mrs Evans on 4<sup>th</sup> April 1902, using a silver trowel which is now in the Dorking Museum. The land on which it was built was made available by the church for a nominal sum, the church, in turn, having acquired the land in 1873 from the Mackworth Praed family, who owned Mickleham Downs estate. The main hall was divided into two with a stage which was three feet above the floor, heating being provided by two coke stoves. Ladies' and gentlemen's dressing rooms were provided but there were no toilets for the audience and no kitchen facilities. At the back of the stage were two bay windows with leaded panes which are still there today. There was no space for parking carriages other than a small area between the Hall and Dell Close which had steel railings on the east and west sides. The original trustees were Mrs Helen Gordon Clark, Mr Archibald Gordon Pollock, Mr Frank de la Garde Grissell, Revd William Lloyd (the Rector) and Miss Lucie Gwendoline Evans (daughter of David Evans) who later married and became Mrs Widenham Fosbery. In other words, the trustees represented the well-to-do local families. There are no records of any meetings until 1920 but we must assume that they were exercising some oversight.

As far back as 1902 the hall began to be used for lectures and entertainment. In those far-off days before the advent of television this must have added hugely to people's enjoyment of life. In the early days it was of course necessary to hold fund-raising entertainment to finance the furnishing of the hall so theatrical performances performed a dual purpose. Back in 1902 there is mention of an amateur dramatic performance held in the miniature theatre opposite the Mickleham Hall stables to raise funds for village hall furnishings. Lectures on topics such as



Pre-1920 photograph of the village hall with Eastfield Cottage in the background

Jerusalem, Newfoundland and the Boer War were illustrated with magic lantern slides and in 1903 a magic lantern was donated to the village hall. Those of you who, like me, have taken part in magic lantern shows will be able to imagine how wonderful this must have been long before the digital age. In the 1920s magic lantern lectures were still popular and covered topics such as Switzerland, Mont Blanc and Canada. Another activity which soon became popular was the holding of jumble sales to help fund the running of the hall. Many local residents will remember these, the precursors of the charity shops which now fill our high streets.

Finances were always a problem as there was no endowment to act as a 'cushion'. A deficit in funds was first reported in the parish magazine in 1920, although the hall was also being used for entertainments to raise funds for the 'Working Ladies' Guild' and the Choral Society. There were plenty of organisations using the hall, such as the 'Men's Club' which met there three nights a week. There were also Whist Drives, dances, meetings of the Rifle Club and the Slate Club in addition to concerts, entertainments and theatricals. Some examples of the charges were £1.10s for entertainments lasting up to 10pm and £2 for entertainments lasting until 11. The hire charges for these

organisations varied and there was a slight reduction in charges for village entertainments. The Men's Club and the Rifle Club would be obliged to give up some of their evenings if a more profitable hire was found, in exchange for a small rebate. Some organisations were charged by the night, others by the week or the season. It was reported that the caretaker would expect 'additional remuneration' after entertainments. The rector was evidently the chairman of the trustees and in 1920 Revd A W Bedford took over from Revd W R Lloyd. The Village Show hired the hall, as it still does. From July 1921 Sunday School started to be held in the village hall and indeed continued intermittently until quite recently. According to the terms of the original trust, the rector was entitled to use the hall free of charge for three days a week for ecclesiastical purposes, but this did not include free fuel, light or extra cleaning. Probably because of this clause, it is reported in 1922 that payment for use of the hall by the Sunday School had been made by means of one ton of coke!

Maintenance of the village hall has been an on-going issue over the decades. By 1924 the need for new heating in the Hall was identified and once again a jumble sale was held to contribute towards the cost. When theatricals took place in the hall in December 1924 it was reported

>>> that care was needed with the electrical switches. Finally in November 1925 it is reported that new heating has been installed. In that same year the need for a piano was identified and a concert was held to raise funds. In 1927 an estimate of £36 was accepted for cleaning and redecorating the interior. Dell Close

## 100 years ago Miss Warburg's Gift

The Times and The Daily Telegraph both have a regular column each day highlighting events 100 years ago. Our eagle-eyed correspondent spotted the reports of January 25th 1922, the date on which a tranche of land had been purchased and donated to Box Hill. The Times reported that it was 'the gift of Miss Warburg, of the well known public-spirited family in London (of Swedish origin)'. We are told that Miss Warburg made the donation in gratitude for the end of the war. It consisted of 70 acres, formerly held by trustees of Lord Francis Hope, 'of gloriously wooded land on Box Hill for the use of the public for ever'. Both reports refer to the abounding wildlife and the rare flora in this famed beauty spot.

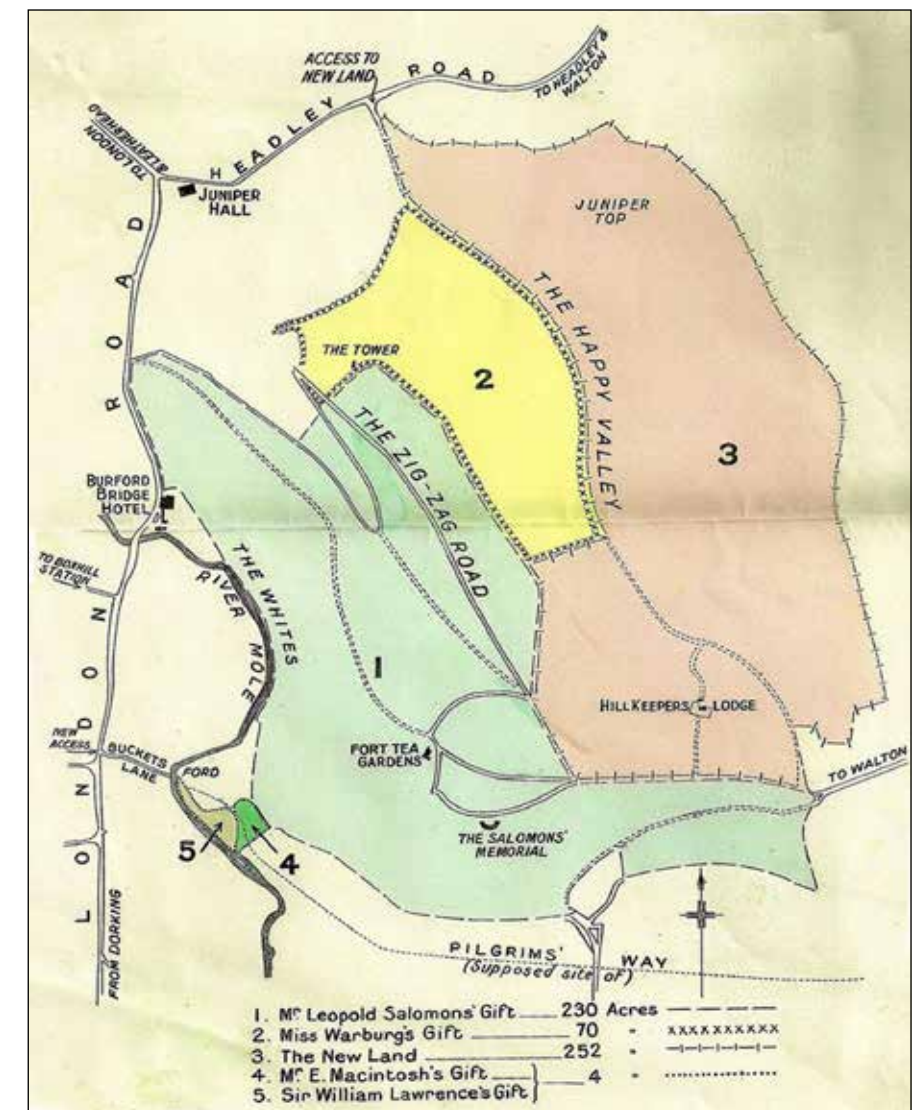
Miss Warburg's land lies adjacent to land already donated to the National Trust and according to the reports 'the amenities of the place are enormously enhanced by the inclusion of the new property.' The reports refer to the attachment to the area of the writer George Meredith, who lived in Flint Cottage at the foot of the Zigzag, forming part of his favourite evening walk and providing inspiration for his writing. It included Lodge Hill, The Thorns, Broadwood Tower up above Juniper Hall and Happy Valley. How many of the numerous people who visit the area today think about how it came to be preserved for public enjoyment and for the precious

Cottages had been built by now and Dorking Rural District Council undertook to pay for setting back the fence in front of the hall and the re-fixing of an electric light standard outside the hall. However, by 1929 exterior re-decoration was required and further problems with the (solid fuel) heating were identified. An

estimate by Mr Bravery for £20 for the redecoration was accepted. In order to improve the heating, it was agreed that the caretaker would be asked to light the stoves earlier and hirers of the hall were to be encouraged to stoke the stoves more frequently.

Angela Ireland

To be continued



Map showing acquisitions to the National Trust Box Hill Estate

environment. Box Hill was obviously regarded as particularly valuable during lockdown when it seemed as if all the world and his wife and children had come for their exercise.

Miss Warburg was not the only generous donor but we are concentrating on her

because of the anniversary of her gift. Lyn Richards, chair of the Friends of Box Hill, is researching Miss Warburg and her generous gift for information of the Friends. We hope we will be able to print more in Mickleham Parish magazine in due course.

Charlotte Daruwalla



## Fully Experienced Carer/Companion

- PART-TIME LIVE-IN • DRIVING LICENCE HOLDER •
- HOURS to SUIT • BABY/CHILD SITTING •
- EXCELLENT REFERENCES • FULLY INSURED •

Reliable, Kind and Caring  
**07748 743 732**

High Quality, Professional Home Care and Companionship Enabling People in Mole Valley & Surrey to Remain Living Independently at Home



## YOUR LOCAL PROFESSIONAL TREE HEALTH CARE SPECIALISTS

Felling, Pruning, Stump Removal, Planting, Logs,  
Woodchip, Air Spade Services, Consultancy

Call us on **01306 741800**  
**office@treeline.co.uk • www.treeline.co.uk**



Your visiting  
**PHYSIOTHERAPIST**  
**SUE JUDD** MCSP HCPC

40 years of experience.

All your requirements for elderly  
mobilisation & post-operative  
rehabilitation.

07834 227999 sue-judd@sky.com

## EDE BROS

• REMOVALS • STORAGE • SHIPPING •

- Since 1926, Capel-based and family owned
- STRESS-FREE, local, national & worldwide
- Contact us for your **FREE** estimate...

**01306 711293**  
**edebros.co.uk**

EDE BROS

REMOVALS • STORAGE • SHIPPING  
Dorking, Surrey, England  
01306 711293  
www.edebros.co.uk

EDE BROS

REMOVALS • STORAGE • SHIPPING  
Dorking, Surrey, England  
01306 711293  
www.edebros.co.uk

EDE BROS

REMOVALS • STORAGE • SHIPPING  
Dorking, Surrey, England  
01306 711293  
www.edebros.co.uk



Gill and Paula would like to warmly welcome you to Aspen Care offering assistance to enable you to live in the comfort of your own home with care and companionship.

- A happy alternative to a care home
- Cover while your family or carer takes a holiday
- Recuperation and rehabilitation following a hospital stay
- All aspects of personal care medication and meal prep
- Dementia care disability chronic & critical conditions end of life care
- Accompaniment to appointments

Call for a chat to discuss your requirements.

We look forward to hearing from you.

01737 354821 info@aspenliveincare.co.uk www.aspenliveincare.co.uk

## P J Oliver & Son

Window cleaning  
House & Garden Maintenance  
Roof Repairs, Guttering  
Painting & Decorating  
Ground works, fencing, hedge cutting,  
and tree work

Also Pest control

Call Phil on 07722 158111  
Email Oliviagarrett79@gmail.com



## YOUR LOCAL FARM SHOP ON DENBIES WINE ESTATE

**farm shop deli plant centre**

Open daily 9.30 to 5.30 and Sundays 10 to 5 Free parking

**LOCAL PRODUCE : Seasonal food and flowers**

**Chalk Hills Bread; Mandiras Kitchen meals, the Gin Kitchen, tulips and daffodils**

We deliver veg bags and more to the local area on Tuesdays and Fridays  
see **www.vgfarmshop.com** or email **vegbag@vgfarmshop.com** for details

**LOCAL • NATURAL • ETHICAL 01306 880720 www.vgfarmshop.com**



## Her Majesty's Golden Jubilee June 21<sup>st</sup> 1887

For parishioners of Mickleham a short church service and the distribution of Jubilee plates, and at 3 o'clock the parishioners began to assemble in the Mickleham Hall meadows kindly thrown open by Mr Gordon Clark. A brass band, swings for the children and games and sports afforded great amusement and a baby show (which I bet afforded a great deal of feeling!) With lovely summer weather. Eating and drinking (tea only!) first for the children and then the adults in relays, went on in Mickleham Hall Coach House (there being no village hall at this time) from four until seven. In the course of the afternoon Jubilee medals were distributed and before going home each child received a Jubilee mug (We see them nowadays being unwrapped from yards of newspaper on the Antiques Road Show). At the appointed time and spot parishioners assembled to sing 'God Save the Queen' accompanied

by the brass band. It was now getting dark enough for the eagerly awaited display of illuminations and fire works together with a huge bonfire which blazed on the heights of Norbury Park. After all expenses there was a surplus of £13 9s 11d. (I'm not going to try to convert that.)

It is worth pointing out that the expenses were covered by subscription and all names and sums donated were published in the parish magazine which I am sure upped the donation — not a bad idea.

## Her Majesty's Diamond Jubilee June 1897

On this day Mickleham went up to London to watch. They stood on the Surrey side of the river and watched as the Empire, as it was then, unrolled before their eyes. Because of the size of the procession, it made very slow progress, so they were all able to have a good look at the great and the good (and the not so good). In bewildering succession came troops from Canada, Australia, New Zealand, W. Africa, Trinidad, Dyaks from Borneo,

Zaptiehs from Cyprus, Zulus, olive-skinned soldiers from the Straights Settlements, Chinese from Hong Kong. The Queen looked very well though rather pale, but she sat upright in her seat bravely and seemed wonderfully little tired for her long exhausting journey. The report included much more about the Church and the Royal family: somewhat jingoistic and rather nostalgic.

## King George V's Silver Jubilee 1935

There was a procession of decorated cars including the car of Miss MacAndrew (of Recreation Ground fame). Her car represented Sherwood Forest complete with Friar Tuck (not, I hope played by Miss MacAndrew). This took first prize. But the 'good taste' and ingenuity displayed by the fancy dress costumes all of home production, presented the judges with a hard task. Maurice Tobitt won 1<sup>st</sup> prize with a bicycle turned into a boat. Sports in Norbury Park and the obligatory vast tea in the Village Hall were followed by the usual mug distribution.

## Also in the May 2002 magazine The Queen's Silver Jubilee 1977

The celebration of HM Queen Elizabeth II's Silver Jubilee was particularly memorable for me as my husband, Hugh, was Lord Mayor of Westminster that year so, amongst other events, we went to the magnificent service at St Paul's, followed by lunch at the Guildhall. A few days later was the River Pageant. We lunched on board Britannia, in the Pool of London, all mahogany, polished brass and antirrhinums three feet tall. With the then Archbishop of Canterbury, Dr Coggan, we had to leave early so that he could, as he delightfully put it, 'pop the kettle on for The Queen who was stopping off later at Lambeth Palace; for

us, it was to board a barge to greet her as she came into Westminster waters. Our 'barge' was, in fact, Sheerness Lifeboat, lent to us for the day, and skippered by Charlie in his 'little woolly 'at' as the weather was inclement - raining actually, and not warm. It was not the most suitable vessel as it had little deck space, but the crew had thoughtfully rigged up a rather flimsy awning over it, from under which Hugh, in his ceremonial robes, was able to dry and wave his plumed hat. Unfortunately, at the moment critique the sagging awning could take no more, it disgorged its contents all over Hugh



and his plumed hat. I regret to say the hat was never the same again! In the evening we moored in a prime position opposite County Hall to watch the stunning fireworks with our children, fortified by a supper of Kentucky Fried Chicken, brought up from Dorking — what a day!

Linda Cubitt



# The Great Outdoors

Photographs by  
Richard Gowenlock\*



Details of photos >>>>

## Investec International Music Festival



## Celebrating Vaughan Williams in the Surrey Hills

This year marks the 150th anniversary of the birth of one of the UK's best-loved composers, Ralph Vaughan Williams, whose life and work are so inextricably linked with the Surrey Hills. To celebrate this musical milestone, the festival has created a unique programme of events drawing together many of those local links, including concerts at his former school Charterhouse; guided walks in the beautiful hills around Leith Hill Place where he grew up and Dorking where he lived in later life; and talks in venues including Christ Church in Coldharbour where he practised the organ as a young man.

The celebrations begin on Saturday 19th March with a performance by Britten Sinfonia and Alexander Sitkovetsky (violin) in the magnificent Memorial Chapel at Charterhouse, including his much-loved *Fantasia on a Theme of Thomas Tallis* and beautiful but rarely-heard *Oxford Elegy*. Although this is not a local venue, fans of RVW might be happy to go to Charterhouse.

The season continues 5-14th May with world-class artists including Sitkovetsky Trio, Modigliani Quartet, Gary Hoffman (cello) and Wu Qian (piano) and, in the Festival Finale on 14th May, a welcome return by the great clarinettist Michael Collins, performing together with a dream team of chamber musicians in the stunning Garden Room at RHS Garden Wisley. Early booking is probably advisable.

As well as music by Vaughan Williams himself, we are thrilled to be presenting world premières by David Matthews, Natalie Klouda and the winner of our inaugural Surrey Hills Young Composer Competition, plus works by Holst, Tallis, Beethoven, Schubert, Ravel and more.

For full details of our varied and exciting 2022 programme and to book tickets, please visit [www.iimf.co.uk](http://www.iimf.co.uk)

## Mickleham and Westhumble Horticultural Society

### AGM and Plant Sale

On 23rd April Mickleham and Westhumble Horticultural Society will hold their Plant Sale and AGM at Ashleigh Grange this year by kind invitation of Angela and Clive Gilchrist. There is car parking space and teas and coffees and cakes to go with an interesting selection of plants all at very reasonable prices. Advice on the best location for planting and how to encourage your purchases to flourish will be readily available.

The garden at Ashleigh Grange is lovely

with superb views out over Chapel Farm and the North Downs - a great venue to hold the AGM and start the horticultural year, before the Summer Show which this year will be held on Saturday 9th July - of which more to follow in another issue.

We will be asking for the annual subscriptions shortly which will be set at £5 per household. We hope many of you will join and this year there will be the chance to join by annual bank transfer.

David Kennington



Snowdrops in Pilgrims Way

## The Great Outdoors Photographs

Following on from the theme 'The Great Outdoors' at the Horticultural Show in the village hall last Autumn, Richard has prepared a set of photos for the parish magazine. He hopes these will cheer people up with the approaching spring after a dark, cold, damp Winter, and give them the incentive to go out and about.

- Top row:     Glaciers of the Jungfrau-Aletsch area, Switzerland / Windsurfing, Hayling Island \*by David Gowenlock
- Second Row: Overlooking the Eiger, Grindelwald Switzerland / Worms Head, Gower Peninsula
- Third Row:   West Wittering Beach / Top of Helvellyn, Cumbria
- Fourth row:  Winter view from top of Box Hill / Curtain Bluff, Antigua, Lesser Antilles, Caribbean
- Bottom row:  Wild garlic, Nicols Field, by River Mole, Norbury Park / Bluebell field, Cherkley Wood



Can you translate this diagram  
into words? Say what you see.

**Lang4uage**

Answer on page 26



## A Confidential & Safe Space to Talk

Counselling • Mind & Body Healing  
Reiki • Relax into Nature Sessions  
Face to face/Online/Outdoors/Distance

Supporting you with compassion and understanding through challenging times



Call Judith Cobby  
on 01306 882229  
or 07790 614448

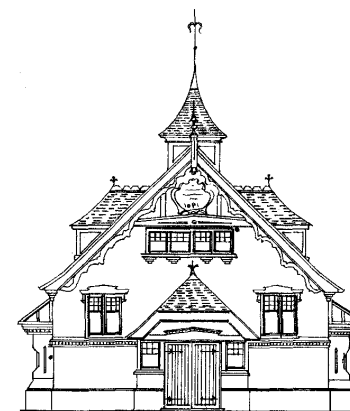
[www.healing-inspiration.co.uk](http://www.healing-inspiration.co.uk)

## TIM LANGLEY

*Experienced craftsman*

ANTIQUE RESTORATION  
CABINET MAKING  
FRENCH POLISHING

Free estimates collection & delivery  
01372 457700 07960 486455



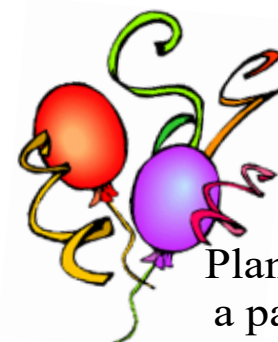
## Mickleham Village Hall available for hire

Hall bookings  
Table & chair hire

Deanna Darnell

07790 941 601

[bookings@micklehamvh.co.uk](mailto:bookings@micklehamvh.co.uk)  
[www.micklehamvillagehall.org.uk](http://www.micklehamvillagehall.org.uk)



Planning a party?

Equipment available for hire

China ~ Cutlery

Electric urn

Equipment hire  
Mary Banfield

01372 373912

[admin@micklehamvh.co.uk](mailto:admin@micklehamvh.co.uk)

## Community Directory

BOX HILL AND HEADLEY HEATH (National Trust)

Lead Ranger – Mark Dawson

01306 885502

[mark.dawson@nationaltrust.org.uk](mailto:mark.dawson@nationaltrust.org.uk)

Friends of Box Hill – Chair Lyn Richards

01737 842889

[lyn@mra.uk.net](mailto:lyn@mra.uk.net)

BOX HILL SCHOOL

Headmaster – Cory Lowde

01372 374814

[HMPA@boxhillschool.com](mailto:HMPA@boxhillschool.com)

DORKING CRICKET CLUB

Chairman – Andrew Homewood

[homewooda@hotmail.co.uk](mailto:homewooda@hotmail.co.uk)

DORKING GROUP OF ARTISTS

Exhibition Secretary – Patricia Booth

01737 24491

[patriciabooth100@gmail.com](mailto:patriciabooth100@gmail.com)

DORKING LAWN TENNIS & SQUASH CLUB

Jim Cattermole

01306 883629

[jim.cattermole@uwclub.net](mailto:jim.cattermole@uwclub.net)

DORKING RUGBY CLUB

Jim Evans

07789 176417

[jim@flintcottage.net](mailto:jim@flintcottage.net)

THE GARDEN SHED

Pauline Davis

07759 646353

[paulinemdavis@gmail.com](mailto:paulinemdavis@gmail.com)

Susie Gowenlock

07768 923088

[susiegowenlock@gmail.com](mailto:susiegowenlock@gmail.com)

JUNIPER HALL FIELD CENTRE

01306 734501

[enquiries.jh@field-studies-council.org](mailto:enquiries.jh@field-studies-council.org)

Head of Centre – Maddy Jones

[m.jones@field-studies-council.org](mailto:m.jones@field-studies-council.org)

Friends of Juniper Hall – Suzy Hughes

01483 281935

[suzy@suzyhughes.co.uk](mailto:suzy@suzyhughes.co.uk)

MICKLEHAM CHILDREN'S PLAYGROUND ASSOCIATION

Secretary – Sarah Parfitt

07767 891772

[sarah@sarahparfitt.com](mailto:sarah@sarahparfitt.com)

MICKLEHAM CHORAL SOCIETY

THURSDAYS 8 - 10 pm – MICKLEHAM VILLAGE HALL

01372 373106

Conductor – Juliet Hornby

Secretary – Anne Weaver

01306 883932

[www.micklehamchoral.org.uk](http://www.micklehamchoral.org.uk)

[secretary@micklehamchoral.org.uk](mailto:secretary@micklehamchoral.org.uk)

MICKLEHAM OLD BOX HILLIANS FOOTBALL CLUB

Secretary – John Atewell

01372 374745

MICKLEHAM PARISH COUNCIL

SEE WEBSITE FOR MEETING DATES

[www.micklehampc.org.uk](http://www.micklehampc.org.uk)

Chairman – Revd David Ireland

01372 379381

[rev.ireland43@btinternet.com](mailto:rev.ireland43@btinternet.com)

Parish Clerk – Feena Graham

[clerkatmpc@gmail.com](mailto:clerkatmpc@gmail.com)

MICKLEHAM PARISH MAGAZINE

Editor – Sue Tatham

01306 882547

[editor@micklehammag.co.uk](mailto:editor@micklehammag.co.uk)

Co-Editor – Charlotte Daruwalla

01306 884025

[editor@micklehammag.co.uk](mailto:editor@micklehammag.co.uk)

Administrator – Vacant

MICKLEHAM VILLAGE HALL

Chairman – Ben Tatham

01306 882547

[chairman@micklehamvh.co.uk](mailto:chairman@micklehamvh.co.uk)

Bookings Manager – Deanna Darnell

07790 941601

[bookings@micklehamvh.co.uk](mailto:bookings@micklehamvh.co.uk)

## Ballroom Dancing Latin American Dancing Professional Training [IDTA]

Private lessons on  
Tuesday afternoons and  
Sunday evenings

At Mickleham Village Hall  
Dell Close Mickleham Surrey RH5 6EE  
07748 867 732

[vmvdancing@gmail.com](mailto:vmvdancing@gmail.com)



IDTA Qualified Teacher

## Rowlatt Garden Services

# RGS

EST.1985

*Gardens large and small  
we maintain them all*

All aspects of private and commercial garden  
and estate maintenance landscaping undertaken  
Fencing grass & hedge cutting

Telephone: 01737 841524 Mobile: 07887 838666  
References available upon request



Joseph

## De Decorators

• Painting • Decorating • Wallpapering •  
Plastering • Tiling

Mickleham based 40 years' experience  
01372 372331 07973 358 932



Regular Lawn Mowing  
Lawn Care & turfing  
Pressure Washing  
Hedge Trimming

General Garden Maintenance

[phil@philsmowingdorking.co.uk](mailto:phil@philsmowingdorking.co.uk)  
07905 160765

## KING WILLIAM IV



Dear neighbours & friends

Our renowned Dinner Quiz with Greg is back for a spring one-off on Wednesday 9th March. Arrival is 6.30 pm onwards for a 7.30 start. Booking is essential via Anne or our email [thekingwilliamiv@gmail.com](mailto:thekingwilliamiv@gmail.com) for teams of 4-6 people. It's £16.95 for two courses and quiz entry.

This coincides and ties in with our celebration of British Pie week from 9th – 13th March where we are offering an exciting selection of artisan home-made pies.

In preparation for spring we have smartened up our lower patio. We look forward to seeing you soon for the Quiz, or Pie Week, or to show you the changes we have made.

All the best Eamonn & Anne

Byttom Hill Mickleham 01372 372590 [www.thekingwilliamiv.com](http://www.thekingwilliamiv.com)



## ST MICHAEL'S CHURCH

*within the United Benefice  
of Leatherhead and Mickleham*

INCUMBENT – VACANT

PARISH PRIEST

The Rev Dr Sandra Faccini \* 01372 417664  
07763 488861

parishpriest@micklehamchurch.org.uk

\* Main working days: Monday, Tuesday and Sunday

CHURCHWARDENS

Sarah Blake 07736 235709  
SarahJB1@outlook.com

Timothy Mathieson 07555 597163  
TimothyMathieson@aol.com

PARISH ADMINISTRATOR

Alison Wood 01372 376443  
admin@micklehamchurch.org.uk

PCC SECRETARY

Elizabeth Moughton 01306 883040  
pccsecretary@micklehamchurch.org.uk

TREASURER

Richard Siberry 01372 375303  
pcctreasurer@micklehamchurch.org.uk

ORGANIST

David Fishwick 0208 773 2420  
organist@micklehamchurch.org.uk

WEDDINGS CO-ORDINATOR

Elaine Machin 01372 724972  
weddings@micklehamchurch.org.uk

BAPTISMS CO-ORDINATOR

Vickie Leney 01306 884054  
baptisms@micklehamchurch.org.uk

FUNERALS ORGANISER

Brian Wilcox 01372 374730  
dbrianwilcox@btinternet.com

WEBSITE MANAGER

Sarah Ward 01372 383350  
website@micklehamchurch.org.uk

[www.micklehamchurch.org.uk](http://www.micklehamchurch.org.uk)

*For information about services for other  
denominations see website pages.*

*Search on 'Churches Together Mole Valley'*

## REGISTERS

BAPTISMS

30th January Robyn Felicity and Tamsin Margot,  
daughters of Kay and Jonathan  
Rawson-Cain  
6th February Amelia Elizabeth Rudolph-West,  
daughter of Nicky Rudolph and  
Natalie West

# CALENDAR

## MARCH

2 ASH WEDNESDAY 7.30 pm Holy Communion  
3 Thursday 11.30 am Lent Group see page 3  
5 Saturday 10 am to noon Coffee morning at Westhumble Chapel

### 6 SUNDAY – First Sunday of Lent

10 am

Family Service

*Deadline for April magazine*

7 Monday 7.45 pm Lent Group see page 3  
9 Wednesday 12.30 pm Lent lunch see page 3  
10 Thursday 11.30 am Lent Group see page 3

### 13 SUNDAY – Second Sunday of Lent

10 am

Holy Communion

Matins at Westhumble Chapel

14 Monday 7.45 pm Lent Group see page 3  
16 Wednesday 12.30 pm Lent lunch see page 3  
17 Thursday 11.30 am Lent Group see page 3  
19 Saturday 9 am to 10 am Ladies' Breakfasts at the  
Stepping Stones

### 20 SUNDAY – Third Sunday of Lent

8 am

Holy Communion

Holy Communion

21 Monday 7.45 pm Lent Group see page 3  
7.30 pm Managing Time The Garden Shed  
23 Wednesday 12.30 pm Lent lunch see page 3  
24 Thursday 11.30 am Lent Group see page 3  
26 Saturday 9 am to 10 am Men's Breakfast at the  
Stepping Stones

### 27 SUNDAY – Fourth Sunday of Lent

8 am

BCP Holy Communion at Chapel

Mothering Sunday workshop at

St Michael's School

*Mothering Sunday service \*Note later time*

28 Monday 7.45 pm Lent Group see page 3  
30 Wednesday 12.30 pm Lent lunch see page 3  
8 pm WRA AGM Westhumble Chapel  
31 Thursday 11.30 am Lent Group see page 3

## APRIL

### 3 Sunday – Fifth Sunday of Lent

10 am

Family Service

## MEMBERS OF THE PAROCHIAL CHURCH COUNCIL

Sarah Blake Mark Day Andrew Diamond  
Caroline Jones Vicky Leney Elaine Machin  
Timothy Mathieson Elizabeth Moughton  
Frances Presley Richard Siberry  
Amanda Wadsworth Amy Ward

## ST MICHAEL'S CHURCH COMMUNITY GROUP COMMITTEE

Mary Banfield 01372 373912  
mgbbmw@aol.com  
Kay Cain 07736281752  
kay\_jay@hotmail.co.uk  
Mark Day 07852 117249  
mickleham@hotmail.com  
Andy Diamond 07789 775354  
diamo1@hotmail.co.uk  
Tim Mathieson 07555 597163  
TimothyMathieson@aol.com  
Frances Presley 01306 882473  
jasempres@gmail.com  
Amy Ward 07709 199292  
amycatrionaward@gmail.com

## ST MICHAEL'S CHURCH COMMUNITY GROUP HELPING HANDS

INCLUDING FOOD FOR FRIENDS

*A service for all residents  
of Mickleham and Westhumble*

Examples of services we offer:

- Essential shopping / collection of prescriptions
- Changing library books
- Small tasks: eg changing fuses, altering clocks etc
- Dog walking
- Visiting / befriending
- Home-cooked meals for local families going through difficult times

Requests to

Frances Presley 01306 882473

*More helpers needed – please contact  
Frances if you can spare some time.*



# Community Directory

Continued from page 13

## MICKLEHAM & WESTHUMBLE BADMINTON CLUB

Membership Secretary Sarah Blake tinkerbell0044@hotmail.com

## MICKLEHAM CRICKET CLUB

Membership contact Will Dennis 07903 842674  
will@micklehamhallfarm.co.uk

## MICKLEHAM & WESTHUMBLE HORTICULTURAL SOCIETY

Chairman – David Kennington 01372 362309  
www.surreycommunity.info/mwhs davidkennington144@gmail.com

## MICKLEHAM AND WESTHUMBLE LOCAL HISTORY GROUP

Chairman – Ben Tatham 01306 882547  
ben@thetathams.co.uk  
www.micklehamwesthumblehistory.co.uk/community/mickleham-  
westhumble-local-history-group-13483/home/

## MOLE VALLEY DISTRICT COUNCIL

Councillor Elsie Rosam 01306 885001  
01306 885695  
elsierosam29@gmail.com

## THE ARTS SOCIETIES (FORMERLY NADFAS)

Betchworth – Mary Venning 01306 883301  
Dorking – Sue Tatham 01306 882547  
Leatherhead – Sarah Sheridan 01306 883699

## ST MICHAEL'S CHURCH OF ENGLAND (A) INFANT SCHOOL

info@stmichaels-dorking.surrey.sch.uk 01372 373717  
Friends of St Michael's School – Chair Amy Riele  
friendsofstmichaels2017@gmail.com

## ST MICHAEL'S COMMUNITY NURSERY

WEEKDAY MORNINGS – MICKLEHAM VILLAGE HALL  
Supervisor – Hilary Budd 01372 361021  
stmichaelsnursery@btinternet.com

## SURREY COUNTY COUNCIL

Councillor – Hazel Watson 03456 009 009  
01306 880120  
hva.watson@btinternet.com

## SURREY WILDLIFE TRUST

01483 795440  
info@surreywt.org.uk

## WESTHUMBLE RESIDENTS ASSOCIATION

David Allbeury 07860 227451  
westhumble.neighbourhood.watch@gmail.com

## WESTHUMBLE NEIGHBOURHOOD WATCH

Lead Co-ordinator – David Allbeury 07860 227451  
westhumble.neighbourhood.watch@gmail.com

## ADDITIONAL CONTACT INFORMATION

### CITIZENS ADVICE

Dorking – Lyons Court 01306 732302  
Leatherhead – Swan Mews High Street 01306 732301

### CRIMESTOPPERS

POLICE Non-emergencies 0800 555 111

(often quicker to make online report) <https://report.police.uk/>

Neighbourhood Specialist Team – Dorking Rural East

General enquiries molevalley@surrey.pnn.police.uk

NHS Urgent and emergency care 111

# Babysitting by local youngsters

Those listed below are at least  
14 years old.

Gracie Owen \*\*07790 900649  
Annabelle Prosser\* 07443 634179

Maisy Presley\* 07720 657327  
Martha Pearce 07514 080005  
Rory Lee \*\* 07973 360 950  
Ellie Kim 07773 395 575  
Chelsea Edwards 07834 695816  
Edward Moran 07740 088124

\* Holidays only  
\*\* Parent's mobile number

If you would like to add your  
name to this list please get in  
touch with Sue Tatham

01306 882547  
editor@micklehammag.co.uk  
No Charge

# Advertising in the Parish Magazine

Please contact  
Sue Tatham (as above)  
Small ads: a nominal fee is  
charged for ads where items or  
services are bought or sold.

We have been advised to print  
the following reminder:  
*We cannot guarantee the  
quality of the goods and  
services offered by our  
advertisers.*



# We will be back. Often!

Dear Mickleham and Westhumble,  
This is a thank you letter!

After 32 truly wonderful years of living  
here (more than half my life but only  
just!) Francesca and I are moving to  
South Devon. And I want to say a very  
specific thank you. Of course there is  
sooooo much I could write about, but  
it would take up too much paper, take  
too long and the deadline for copy for  
the parish magazine was last night. And  
anyway, that's not my point caller!

My point caller is this – I want to thank  
you, from the bottom of my heart for  
the way in which everyone has been

so incredibly accepting as Francesca  
transitioned from Martin to her true  
self. If I had known she was transgender  
before (and if I had even known what  
that meant!) I would never in a million  
years have imagined that people could  
be so warm and welcoming. It has been  
extraordinary.

Because everyone has been so  
wonderful it feels to me as though we  
are being a little ungrateful by moving  
away. But in fact the opposite is true and  
we will always be so incredibly thankful,  
I feel indebted. In what could have  
been such a difficult time your love and  
acceptance has made all the difference.

We have no idea of course what this  
move will hold for us, but we have  
each other and we have the strength  
and support of your acceptance and  
friendship to send us on our way.

We will be back. Often! Thank you!

Katie Cox



# Boules or Pétanque

There is an opportunity to start up  
regular boules sessions at Mickleham  
Village Hall. It is good fun and social and  
requires very little except an ability to  
propel a small metal ball a short distance  
towards an even smaller wooden ball  
used as a target called a cochon. In fact  
it is rather like aerial curling! Emanating  
from France it is often accompanied by

the odd glass of wine and a few salty  
snacks. Free tuition will be given by  
'experts' who can show you the correct  
way to toss the ball.

There is an extensive glossary  
associated with the game which can  
be found at the OBUT website, my  
favourite being 'bati bat' to describe  
someone who has lost their cool at

# Community News

Congratulations to Francesca  
and Kate Cox on the arrival of a  
grandson, Ignas, born to Lucie and  
Haroldas Bagdisanka on 25th January,  
a brother for Redford and Luna. Ignas  
is a Lithuanian name, meaning bringer  
of fire – very fitting as he was born on  
Burns Night.

Farewell and Godspeed to Kate and  
Francesca Cox who are moving from  
Old London Road to Devon. They have  
played a big part in the community for  
many years and will be much missed.

Welcome to Kelvin Pritchard who  
has moved to Adlers Lane from  
Burpham.

Please let us know if you have any  
community news eg a new baby, if  
you have just moved to the area, or are  
about to leave. editor@micklehammag.  
co.uk is the contact.



a decisive moment. There is also an  
unmentionable word and actions to  
follow for anyone, or team, losing 13-0  
in a game... check out OBUT!

I have said that I will co-ordinate the  
initial interest, so please email me at  
davidkennington144@gmail.com or  
phone 01372 362309.

David Kennington

# LOVE FLOWERS?

Dorking Flower Arranging Group runs  
a range of activities to keep you  
interested and help develop your skills  
– there are presentations, exhibitions,  
workshops, outings and competitions.

Join our sessions to meet with like-  
minded people for a chat and a cup of tea  
and to see flower arrangements being  
created in front of you by experienced  
presenters. You can even take one of  
the arrangements home, if you are lucky  
at the raffle. We meet every second  
Monday of the month at 2 pm in the

Betchworth Village Hall, Station Road,  
RH3 7DF (opposite the Knights Garden  
Centre). New members and visitors  
are always welcome. Membership is  
£38 per year, £5 for  
a single visit.

The next meeting will  
be on March 14th.  
Our guest presenter  
will be Robin White,  
the NAFAS Area  
Demonstrator and  
Designer of the Year 2019.





# Climate Change through a Gardener's Eyes

Our first Garden Shed presentation of 2022, provided a fascinating insight through the eyes of Mark Dobell, former Head Gardener of Little Mynthurst, where he witnessed first hand some of the changes we are experiencing in our climate. During his 21 years there he managed the consequences of more variable rainfall, increased temperatures and extreme weather conditions. Mark now runs his own landscaping business.

Warmer temperatures in Spring and Autumn have extended the growing season resulting in some species flowering earlier while others have delayed leaf fall in Autumn. Already maintenance tasks such as weeding and mowing are extending into these periods. How many of us were mowing the lawn in November? Combined with high temperatures and stronger sun there is a risk of scorching plants, particularly those in greenhouses. Mark suggested using shade protection paint

for greenhouses, which should be applied in early Spring.

Variability in rainfall is leading to an increased incidence of waterlogging and flooding that washes vital nutrients, particularly nitrogen, out of the soil. Planting in raised beds and mulching helps to improve plant growth in these conditions, as well as making sure adequate water is available in the dry growing season.

With warmer, damp conditions new pests and diseases have extended their range and become more persistent. We are already seeing examples of this in local box plants. Using organic products including *Baccillus thuringiensis*, nematodes and garlic spray, Mark was able to control pest outbreaks with some success.



Finally, for those looking to invest in plants that are more likely to tolerate extreme conditions Mark ended the session with some suggestions for hardy herbaceous plants, including *allium*, *artemisia*, *accillea*, *agastache*, *caryopteris*, *echinops*, *echinacea*, *euphorbia*, *nepeta*, *penstemon*, *paeonia*, *salvia* and *sedum*.

The more plants we grow the more benefits they will provide.

Cathy Lee



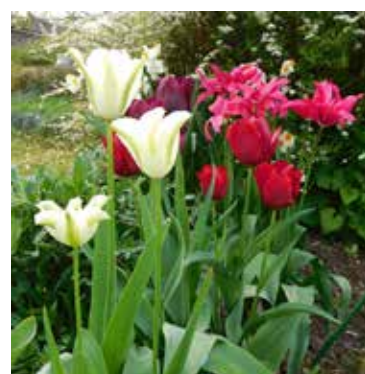
See our website for details  
[www.gardenshed.club](http://www.gardenshed.club)

Benjamin Pope with his talk

## Managing Time

This talk will include tips on how to create and maintain your garden, even if you are short of time.

Monday 21st March 7.30 pm  
at the Stepping Stones PH  
£6 on the door, no need to book



**Pashley Manor  
Tulip Festival**  
with a guided tour  
Wednesday 27th April 2022  
Tour commences 10 am  
Cost £24.50 Booking is essential  
Self-drive. Car share where possible

Any questions: Pauline Davis 07759 646353 [paulinemdavis@gmail.com](mailto:paulinemdavis@gmail.com)  
Susie Gowenlock 07768 923088 [susiegowenlock@gmail.com](mailto:susiegowenlock@gmail.com) Cathy Lee 07500 767240 [cplee1603@gmail.com](mailto:cplee1603@gmail.com)



[www.dorkingarea.foodbank.org.uk](http://www.dorkingarea.foodbank.org.uk)

It has been another very busy year in the Dorking Area Foodbank. We have seen a massive increase in demand for our services and we do not imagine that this will decrease anytime in the near future.

If you have ever imagined that there is no food poverty in Dorking and surrounding areas, think again. Since we opened our doors in 2015, our referral rates have gone up year on year. In 2021, we issued 1,363 emergency three-day food parcels through our foodbank – a 35% increase on 2020 – which fed 2969 adults and children in the area. We also worked closely with other partnership organisations to assist with 'Holiday hunger', delivering 4 tons of food to 170 families across Dorking and the villages, to assist those

# Report from the Dorking Area Foodbank

struggling to feed their children when school holidays keep them from free school meals.

These numbers are not massive when you consider that the Trussell Trust, who we are part of, recently released figures showing that across the country 2,537,198 emergency food parcels were given out by Foodbanks in their network last year. But this is Dorking and the villages, where many are surprised that we would ever need a foodbank at all.

We are open twice weekly at the Christian Centre in the centre of town. All visitors are offered a warm welcome as well as store cupboard food, toiletries and household items, as well as a selection of fresh food. And there are always additional services on offer, our latest, help with fuel bills as the fuel crisis and rising costs bite deep.

In total 34.7 tons of food were donated to us last year – all from individual people in the community who faithfully give weekly through supermarkets, Churches or office or community donation boxes. We could not be more grateful for the continuing support and commitment of the community to provide for all those struggling financially to feed themselves.

If the last two years have shown us anything, it is that we all need the support and care of each other and that any of us could fall into financial difficulty where we struggle to feed ourselves.

If you have ever donated food or given money, a massive thank you from us all at Dorking Area Foodbank. We could not do this without you!

## Time to start walking again



At this time of year we start to think about the mud drying up and getting out to walk in the beautiful English Countryside again, but where to find new and interesting walks?

Walking in Surrey <https://www.walkinginengland.co.uk/surrey> has hundreds of walks to download and print, free, it also has books of walks, details of all the walking groups in the county and much more. Whether you want to walk on your own or with a group all the information is there in one place.

John Harris (the custodian of the website) said 'There is so much walking

information on the web but it is difficult to find. Walking in Surrey (part of the Walking in England website) has brought it together in one place so whether you are walking from home, or away on holiday, you will be able to find a walk suitable for you'.

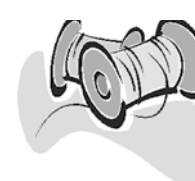
With walks from half a mile to twelve miles plus long, and a note of suitability for pushchairs and wheelchairs, everyone can find a walk to enjoy.

So home or away, check out the websites and get walking!

John Harris

[www.walkinginengland.co.uk](http://www.walkinginengland.co.uk)  
[john@walkinginengland.co.uk](mailto:john@walkinginengland.co.uk)

**Vivien Cresswell**  
Made-to-measure Soft Furnishings  
Curtains Roman Blinds Cushions



Extensive range  
of fabrics  
01737 843858  
[info@cresswellscurtains.co.uk](mailto:info@cresswellscurtains.co.uk)  
[www.vivienecresswell.co.uk](http://www.vivienecresswell.co.uk)

**Mike Palmer**  
Electrical Services

Part P registered electrician



From additional lighting and sockets  
to complete rewires

Fully insured Registered with the NICEIC

07866 930483 [mike@mikepalmer.biz](mailto:mike@mikepalmer.biz)

Boxhill Way, Strood Green, Betchworth RH3 7HY





## Leith Hill Music Festival

We have all come through very dark times in the past many months of the pandemic, but music will triumph and for the two Leith Hill Music Festival concerts there is a wealth of uplifting music to enjoy.

2022 marks the 150th anniversary of the birth of Ralph Vaughan Williams, the founder Conductor of the Festival, and each concert programme will include with one of his short choral masterpieces.

**Friday 8th April**  
 Beethoven - Mass in C  
 Jonathan Willcocks - The Song of Mary  
 Vaughan Williams - Let all the world in every corner sing

**Saturday 9th April** (Includes Mickleham Choral Society)  
 Vaughan William - The Old 100th  
 Bob Chilcott - A Little Jazz Mass  
 Gershwin (arr. Warnick) - Porgy and Bess Suite  
 John Rutter - Feel the Spirit

Tickets from Dorking Halls Box office:  
 01306 881717  
[www.dorkinghalls.co.uk](http://www.dorkinghalls.co.uk)



After a short temporary closure to allow for essential building maintenance work, Dorking Museum's team of volunteers was so pleased to be able to open the doors again and welcome visitors back. Spring heralds the start of some of our other activities. A recent addition to the Museum's displays is a replica of Dorking Greystone Lime Company 'Coffee Pot' No. 1, the first steam locomotive purchased by the company

## Dorking Museum In March

to replace the team of horses pulling wagons at their quarry in Betchworth. Celebrating its 150th anniversary last year, Coffee Pot No.1 is one of the world's oldest working railway steam locomotives, now located at the Beamish Museum in County Durham. The model was made for the anniversary by local author and railway enthusiast Julian Womersley and is on loan to the Museum. (Julian is author of another recent Cockerel Press publication, "A Dorking Foundry Scrapbook", available from the online bookshop.)

International Women's Day (8th March): The local area was a hot-bed of activity in the fight for the vote for women, with Emmeline Pethick-Lawrence one of the most noted participants. As well as in the Museum displays, a short film, 'Suffragettes in the Surrey Hills' can be found on YouTube and Kathy Atherton's books 'Suffragette Planners and Plotters' and 'Suffragettes, Suffragists and Antis' are available from the Museum's online bookshop. Or look out for blue plaques unveiled on the front of the former home of the Pethick-Lawrences, The Dutch House in South Holmwood, and the campaign headquarters run by Charlotte Marsh and Helen Gordon Liddle in Howard Road, Dorking.



One of the foremost local campaigners against Women's Suffrage was Bertha Broadwood, whose family is world famous for the manufacture of pianos; and 29th March is Piano Day. Lyne House, near Capel, was the family home from 1799 until 1975 and customers of John Broadwood and Sons included Beethoven, Chopin and Liszt. Locally, National Trust landmark Broadwood's Folly at Box Hill was built by Thomas Broadwood in the 1810s, and Mrs Charlotte Broadwood built one of the country's first cottage hospitals in Capel in 1866 (now the Charlotte Broadwood Flats). The Museum's collection includes several Broadwood family items.

The Museum is at 62 West Street, Dorking RH4 1BS. Thursday 1pm-4pm, Friday and Saturday 10am-4pm. Free entry, but donations welcome. Visit [www.dorkingmuseum.org.uk](http://www.dorkingmuseum.org.uk). Enquiries to [admin@dorkingmuseum.org.uk](mailto:admin@dorkingmuseum.org.uk) or phone 01306 876591.

## Cryptic Delicacies

Last month's theme was SIDNEY POITIER and his films BLACKBOARD JUNGLE, LILIES OF THE FIELD, and IN THE HEAT OF THE NIGHT. The latter two are currently available on iPlayer and will be on there until the end of February. Very much worth a watch if you have not seen them and it is easy to see why he had such a long and successful career. Though he often needed to play tough in the face of difficulties and prejudice, it was really just a veneer over his unforced warmth and enthusiasm that he could not help but let out. I could not fit his name as words in the grid along with the film names, but in the end I hoped that my picking the letters out in yellow might help with some of the other clues, presuming that you found the theme early on, of course!

Here are some of the clues worked out, with definitions underlined:

**1 Building a company with lots of aircraft and lots of ships (4)**

**BARN**

'A company with lots of aircraft' = BA (i.e. British Airways), and 'lots of ships' = RN (i.e. Royal Navy). The 'and' is just a linking word: important to separate things out and not fall into the trap of thinking you are looking for a company with both aircraft and ships.

**3 French novelist is after someone who can turn him into stone with some cheese (10)**

**GORGONZOLA**

I am not anywhere near an expert on French literature or Greek mythology but from some responses to this clue, it appears that I was more knowledgeable than I thought! I am struggling to name more than a dozen French novelists off the top of my tête, but Émile ZOLA (1840-1902) is one of them. That said, I could not have named a single one of his novels and he is more known to me for his '*J'Accuse...*' article accusing the French Army of antisemitism and obstruction of justice during the

Dreyfus affair (and which led to him fleeing France and briefly living in Weybridge, Addlestone, and Norwood). 'Someone who can turn him to stone' refers to the story of Medusa, one of three monstrous GORGONS, described as winged human females with living venomous snakes in place of hair. Medusa was beheaded by Perseus and he kept her head as a weapon because it still retained the power to turn onlookers into stone. So, an easy clue if you knew those things, but nearly impossible if it does not happen to be a part of your general knowledge. That said, I would have Googled if I had not known; and I am a genuine believer that there is no shame in that. Thinking we are thick and cannot change is how we stay stuck, seeking answers to questions is how we change the world.

**23 Lots of people providing collection of natural highs (6)**

**MASSIF**

'Lots of people' = MASS (possible confusion coming from the use of a plural word 'lots' to get a singular word 'mass'). 'providing' = IF (as in 'you could do this clue providing (or if) you were aware of the synonyms for 'if', such as 'given that', 'as long as', 'assuming', etc'. The definition is a bit tricky but I hoped that you would get a steer by the final letter 'F' being given by the crossing clue that was part of the puzzle's theme.

**27 How Tarzan lisps that he's not bonkers for producing intestinal gas (7)**

**METHANE**

If Tarzan were to announce that he was not bonkers, he would say 'Me sane', and if he would lisp it he would say 'ME THANE'.

**30 Tips staff for revealing a way to catch their attention (4)**

**PSST**

'revealing' says that there is a hidden word in what precedes it so in 'tipS Staff'.



**8 Many paratroopers like a bit of a jumper? (4)**

**ARMY**

'A bit of a jumper' is an arm, and 'like an arm' could be said to be ARMY, in a similar way to 'like a bit of a pair of trousers' possibly being 'leggy'.

**14 Utter untruths given to the leader with the most majesty (10)**

**STATELIEST**

'Utter' = STATE (as in 'say'), 'untruths' = LIES, 'The leader' is the first letter of 'The' = T.

**24 Sally or Frank are in W.C. endlessly (5)**

**FIELD**

Sally FIELD is a wonderful actress who really shone out in the fantastic National Theatre Live presentation of 'All My Sons' (still available via [www.ntathome.com](http://www.ntathome.com)). Frank FIELD is one of those politicians who makes a success out of having principles, which is something to be celebrated even if one does not agree with them. W.C. FIELDs (1880-1946) had a comic persona that pulled off the magic trick of being a self-centred hard-drinking people-hater with a contempt for children and dogs and yet eliciting sympathy from audiences. In real life, he often contributed to scripts under pseudonyms (including Mahatma Kane Jeeves: say it out loud and you will have what Bertie Wooster might say on leaving the house) and, as he lay dying, his partner used the garden hose to sprinkle water on the roof and thus simulate his favourite sound, the patter of falling rain.

I hope this helps and it would be great to get any feedback via [andrewt@andrewtatham.co.uk](mailto:andrewt@andrewtatham.co.uk)

Andrew

## Dates for your diary

23 April M&W Horticultural Society AGM and Plant Sale  
 27 April Garden Shed Visit to Pashley Manor  
 3-5 June Platinum Jubilee Celebrations  
 9 July M&W Horticultural Society Summer Show



## Do you need a plasterer?

Over 25 years' experience working on extensions, renovations, new-build and conversion projects for builders and domestic customers alike.



Our work is to a high standard and we are fast. Give Chris a call for a free, no obligation quotation.

**CHRIS C GUY  
PLASTERING LTD**

ALL ASPECTS OF INTERNAL & EXTERNAL PLASTERING  
07740 860560 [chrisguyplastering@gmail.com](mailto:chrisguyplastering@gmail.com)

07871 051661 / 01372 458616  
[timskerrittgroundworks.co.uk](http://timskerrittgroundworks.co.uk)

**TimSkerritt**  
LANDSCAPE & GROUNDWORKS

## Turn your vision into a reality

Tim Skerritt Landscape & Groundworks offers a comprehensive range of services to both commercial and domestic clients across Surrey.

From hard landscaping to extensive site excavations, we offer a high quality, honest, reliable and competitively priced service, guaranteed to meet all your needs. Contact us today to find out more.

## Julie Watts Family Law

AN AFFORDABLE AND EXPERIENCED PROFESSIONAL  
ALTERNATIVE TO TRADITIONAL SOLICITORS

- Divorce • Arrangements for children • Finances
- Court Proceedings

PROUD TO PROVIDE A DIFFERENT KIND OF SERVICE

- Affordable fees • Straight-talking advice
- Practical real support

Contact me for a consultation

07808 572157 [juliewattsfamilylaw.co.uk](http://juliewattsfamilylaw.co.uk)

## We provide the best possible care for your feet

Book your appointment:  
**01372 454583**



**Bookham  
Chiropody & Podiatry Clinic**  
Diagnosis, Expert Treatment & Professional Care  
for Your Feet

**29 High Street, Great Bookham KT23 4AA**  
[www.bookhamchiropody-podiatry.co.uk](http://www.bookhamchiropody-podiatry.co.uk)

## Domestic Appliance Repairs

30 years' experience repairing and installing  
all gas and electric domestic appliances



- Cookers Microwaves
- Dishwashers
- Washing machines
- Fridges / Freezers
- Water coolers
- Coffee machines
- Tumble dryers

Contact: Andy 07895 719706  
[andy@kirksdomestics.co.uk](mailto:andy@kirksdomestics.co.uk)



## PAINTING DECORATING

ANDREW CLARK 07800 796 737

INTERIOR & EXTERIOR • CARPENTRY • HANDYMAN

## Dorking Pest Control Services

Local Authority Approved Contractors



Our Services include: Wasps Bee Swarms Hornets Rats Mice  
Squirrels Fleas Flies Ants Cockroaches Bed Bugs  
Rabbits Moles Foxes and Deer

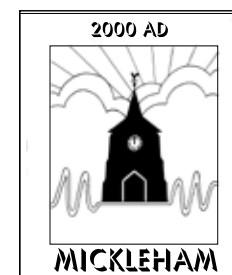


• Domestic Commercial and Industrial • Contract Work • Preventative Control Programmes

Experts in pest control throughout Surrey

Office: 01306 743001 Ivor: 07710 117491 Chris: 07971 519415

[www.dorkingpestcontrol.com](http://www.dorkingpestcontrol.com)



## Mickleham Parish Council

At the last meeting of the parish council, held in St Michael's Church on Wednesday

12<sup>th</sup> January, a number of issues were discussed. Among them were several relating to the challenges of controlling the speed of vehicles through Mickleham on the Old London Road and thus how to safeguard pedestrians and cyclists using it.

In particular it was reported that the 30mph illuminated sign is now operating efficiently and is recording the number of vehicles which exceed the limit when passing the sign. It may be of interest and concern to learn that 3449 vehicles exceeded 30mph in the first three weeks of January.

In addition the Community Speedwatch team is up and running once more, thanks to the addition of two new volunteers, to whom we are very grateful.

Surrey County Council is funding schemes to introduce 20mph speed limits outside school entrances and one such possible scheme is on the Old London Road outside the entrance to Box Hill School. There is also a move to encourage all Surrey villages to consider the possible introduction of 20mph speed limits.

So there is continued activity to try and manage the challenges of having become a short cut off the A24 for those wishing to avoid the average speed cameras!

The vandalism created by off-road vehicles accessing the Mickleham end of the 'Gallops' was also raised and assurances have now been given that

Surrey County Council has placed barriers to prevent access to this area from several different directions. Time will tell how effective this action has been.

On a brighter note, the involvement of the parish council in planning for the Queen's Platinum Jubilee celebrations was also discussed. Feena Graham volunteered to represent the parish council alongside the chairman at the Steering Committee, which also includes representatives of St Michael's Church and Westhumble Residents Association.

Finally the annual round of the precept was discussed and it was agreed that the rise should be kept to a minimum for the coming year, bearing in mind the rise in the cost of living in so many areas of residents' lives. The rise of 1.93% means that the budget for this coming year is £7,590.00. David Ireland



Shop local produce from Surrey's best independent retailers and get it delivered all in one go with Hi Street. You can choose and purchase from shops in Dorking, Reigate, Ashted, Bookham, Guildford and surrounding villages all for delivery.

Why Hi Street?

- Shop from butchers, greengrocers, fishmongers and more in one online order & one delivery
- Save time and effort when shopping local
- Discover amazing independents near you
- Protect your local economy from becoming chains only
- Less plastic, less miles, small batch

Order this month and get 50% OFF your first order. Use code PARISH [www.histreetdelivery.com](http://www.histreetdelivery.com)  
(T&Cs apply. New customers only. Discount up to £30.)



## Horticultural Society AGM and Plant Sale



Mickleham and Westhumble Horticultural Society  
([www.mwhortsoc.org](http://www.mwhortsoc.org))

**10:30  
Saturday  
23rd April**

**Ashleigh Grange,  
off Chapel Lane,  
Westhumble, RH5 6AY**

## A25 ELECTRICALS Domestic & Commercial

- Electrical Installations
- Alterations
- Expertise in Fault Finding
- Condition Reports

**07760 852 540**  
Part P Approved



**10 Year**  
Manufacturer's  
warranty available  
with any new boiler  
Oil, LPG and Gas Registered • Consult • Design • Install • Maintain

**SEENERGY**  
INNOVATIVE ENERGY SOLUTIONS

Call for a free quote on  
**01306 735499**  
[www.seenergy.co.uk](http://www.seenergy.co.uk)  
[enquiries@seenergy.co.uk](mailto:enquiries@seenergy.co.uk)

EMERGENCY  
24  
HOUR  
SERVICE

Best Buy  
Which?  
Gas Boilers September 2018

**Get IT Fixed, Get IT Connected**  
Expert Repair & Maintenance




Brockham based. No call out charges. Fully transparent quotations with no hidden costs. We make technology work for you.

Call us now on **01737 845980** ChalkHill Systems  
[www.chalkhillsystems.co.uk](http://www.chalkhillsystems.co.uk)

**M & R BUTLER**

- GENERAL HOUSE MAINTENANCE
- EXTERNAL & INTERNAL DECORATING
- BESPOKE CARPENTRY
- LOCAL REFERENCES
- 40+ YEARS EXPERIENCE

07776256131 / 07896015771



**TONY WINCH**  
CARPENTER, JOINER  
& CABINET MAKER  
[www.tonywinch.com](http://www.tonywinch.com)  
**01306 742373**  
**07969 016 924**

**Building Plans**  
For home improvements & extensions  
Including planning & building regulations  
Fast efficient service at competitive rates

**MICHAEL LLOYD** CEng MICE  
For free consultation:  
Phone: 01483 205479 or 07958 791 402

**RWP**  
Extensions and alterations often require a  
Structural Engineer

**Robert Wynter & Partners Ltd**  
**01306 879875**  
Book House Vincent Lane  
Dorking RH4 3HW

**remedial roofing**  
For people with roof issues and deficiencies

- New roofs – slate & tiled roof specialists
- All roof repairs, moss removal & gutter clearance
- Flat roofs, traditional felt & GRP fibreglass
- New uPVC Fascia, soffit & guttering

Obtain an up-to-date report of remedial roofing on [www.checkatrade.com](http://www.checkatrade.com)

ALL WORK GUARANTEED  
Call us today for a FREE quotation on:  
**01306 304736 | 07852 833802**  
[info@remedialroofing.co.uk](mailto:info@remedialroofing.co.uk) [www.remedialroofing.co.uk](http://www.remedialroofing.co.uk)

Confederation of Roofing Contractors  
The Premier Roofing Trade Association in the UK  
All Members Offer Insurance Backed Guarantees

Cheekatrade.com  
SURREY  
TRADING STANDARDS  
APPROVED



Did you join in with the Great British Bird watch? At nursery we built a 'hide' and used identity sheets to learn the names and count the many birds that visited our bird feeders. We used sunflower seeds for sensory play, with the end of the morning sweepings being strategically thrown over the fence by the hanging bird feeders. The tweet certainly got around, and we had a notably high number of visits from chaffinches.

The children have had great fun making pizza (the birds also enjoyed the grated cheese sweepings). Healthy eating is all

about a balanced diet and homemade pizza is a very tasty way of helping children try new vegetables. Our snack table is a natural place for us to have conversations about what we eat, how foods help our body to work, and importantly for me (being a farmer's daughter) where our food comes from. We have also had positive feedback from parents, one telling us that their child asked for extra broccoli because it was so good for them! Our giant teeth have been thoroughly cleaned too, with all children being given Colgate teeth cleaning charts.

After register time, our early morning routine at nursery continues with the very much enjoyed 'Breakfast Boogie' the nursery adults love it too, it certainly ups our step count! This month we will be doing extra exercises to build strength and stamina for the Nursery Winter Olympics. Our Duplo people have been turned into Olympians, with lolly stick skis and ice block feet and we have been super creative with our resources to form ski slopes, bobsleigh, luge, skeleton runs with our gutter tracks and

our child-sized brooms and toy-pointing trowels being our effort at re-creating curling!

We are still accepting applications for new starters in the academic year September 2022 and January 2023. Please get in touch with the nursery if you would like a 'look see' tour.

Hilary Budd



Left and below: pizza making and eating. Right top: recording the Great British Birdwatch. Right: curling.







## Mickleham Village Hall Dell Close

Weekdays 9.15 am - 12.15 pm (term time)

### WITH OPTIONAL LUNCH CLUB

On Mondays and Thursdays there is the option for children to stay until 2.45 p.m.

Maximum 26 children per session

• playing naturally • learning naturally

We offer an excellent range of pre-school activities for 2½ to 5 year-olds where they can learn through play in an informal friendly atmosphere.

Contact us for more information about admissions

01372 361021 [www.stmichaelscommunitynursery.co.uk](http://www.stmichaelscommunitynursery.co.uk)

## Solution to the February crossword

Across: 1 Barn 3 Gorgonzola 10 Ardours 11 Unbosom 12 Kludges 13 Lilies 16/15/21 In the heat of the night 18 Red giants 23 Massif 25 Dutiful 27 Methane 28 Inflate 29 Stepladder 30 Psst.

Down: 1 Blackboard 2 Redoubt 4 Obsession 5 Gruel 6 Nebulae 7 Obscene 8 Army 9 Jungle 14 Stateliest 17 Test drive 19 Draftee 20 Install 21 Notify 22 Guffaws 24 Field 26 Emus.

## BRAIN TEASER answer: Foreign Language

## Last month's Wordsearch Puzzle Solution

REIGATBOLDESSEU  
NKDQMAHELCIMBE  
LLWVBTDIKMQFLK  
DRGUILDFORDUBMW  
PRYLLIWGNIKMUDL  
ILLAHREPINUJOIE  
PRUNNERSRHRHDA  
PACMMYEETFKHOT  
BUQZKRDSEIHYOSH  
RXTAOHEKNLLSJEE  
OZSMIWIJGZENEIR  
OZNLBGBOXHILLBH  
KALRIVERMOLEZNE  
RKRAPYRUBRONXEA  
ROSESSTORESMTOO



Mickleham and  
Westhumble Local  
History Society

## Programme for 2022

Wednesday 15<sup>th</sup> June Juniper Hill visit  
Saturdays 19<sup>th</sup> and 22<sup>nd</sup> October  
Beating the Bounds  
Visit to Reigate Caves –TBA

## Suitable items for the foodbank collection

|   |                                  |
|---|----------------------------------|
| Tinned veg / tomatoes / soup / sauces / baked beans | Washing-up and cleaning products |
| Powdered milk / UHT milk (green and blue only)      | Tissues / Paper towels / Tampons |
| Rice pudding / Long life sponge puddings            | Men's / women's toiletries       |
| Coffee / Tea bags / Long life fruit juice           | Laundry products                 |
| Pasta / Rice / Pulses / Instant mash                | Nappies                          |
| Jam / honey / marmalade / spreads                   | Pet food                         |
| Sugar (500g bags only)                              |                                  |

**Please do not include out-of-date items or those that require refrigeration**



### LOCAL FOOD BANK COLLECTION POINTS

**MICKLEHAM**  
Garden Corner off Old London Road  
Mary Banfield 01372 373912

**WESTHUMBLE**  
St Anthony, Pilgrims Way  
Sue Tatham 01306 882547

## Arctic Explorers

A message from Miss Fox

It has been wonderful returning to the Early Years classroom following my maternity leave. The lead reception teacher, Mrs Moore, has set up such a wonderful and exciting environment for the children. Big building blocks are out every day, a huge sandpit is available for the children to play in and an inviting, well-resourced art area are just a few examples. Each week the children have plenty of different topic related activities to choose from. Most recently, the children have been learning about the Arctic. They began by learning about polar bears and their young cubs, the children were enthralled – especially when they read that the mother lives in a snow cave and does not eat for four long months.

The children made snowy bear dens in the art area, wrote about different polar bear physical features and read plenty of stories about the Arctic. This, of course, ran alongside the usual weekly

fun of outside learning and continuous provision (it felt pretty chilly when the children decided to build igloos to go with the Arctic theme!)

Child-initiated play was busy in the role play area and the children have been engaging in exciting maths activities set up around the classroom by Mrs Moore. The children in early years learn maths through concrete objects and practical hands on experiences so it is vital that we provide them with as many opportunities as possible.

Phonics is always fun. The children are building up their knowledge of the different phonemes and they are now delighting in their new found joy of beginning to read.

All round, it has been a super start to my return.

A message from Mrs Travers

What a busy few weeks Year 1 have had. In geography, the children have been exploring ocean animals and



**St Michael's  
School**

[stmichaels-dorking.surrey.sch.uk/](http://stmichaels-dorking.surrey.sch.uk/)

their habitats. The polar bear seems to be a favourite, as are the seals. We have brought a bit of the Arctic into the classroom, with our very own Lego ice blocks in a cup. The children passed two of the blocks around and many ideas were exchanged as to what methods we could use to melt ice quickly. The cubes were almost melted by the time they were passed around so we decided that body heat is a pretty effective method. Moving on from one shaped structure, the children designed their own sculptures using 'negative space', a scientific word for a space within a shape, such as a ring or even the simple and humble brick. They then brought these sculptures to life in the form of clay.



Ice experiments; sculptures and measuring.





## Cryptic Crossword

### Across

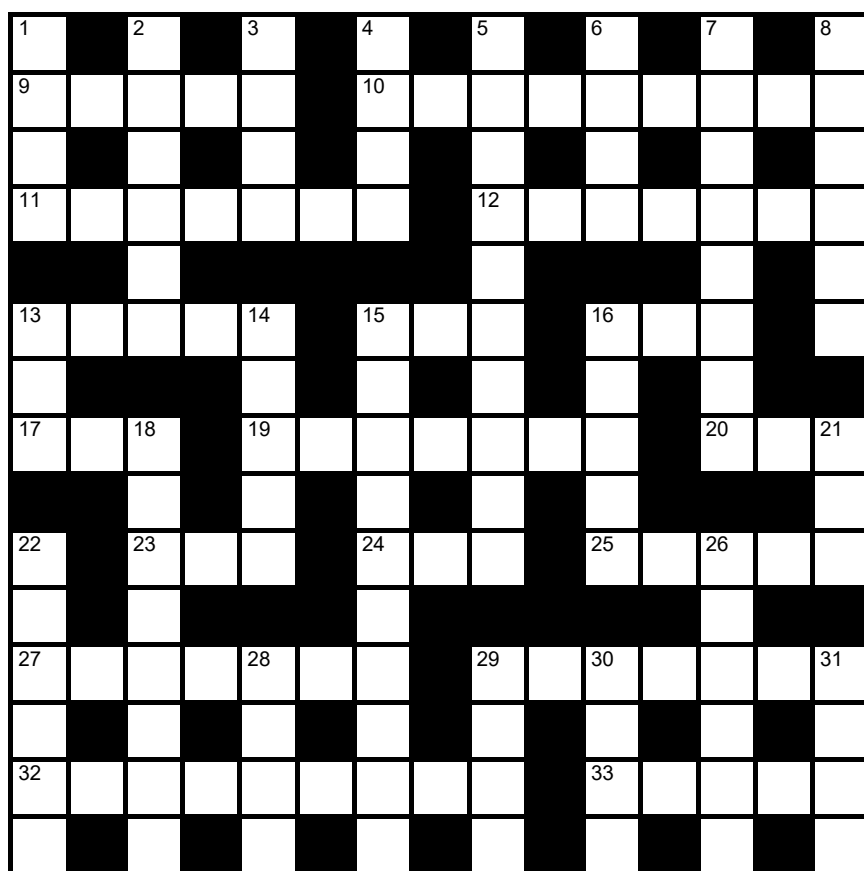
- 9 Cockney asking if he would sound as dense as a post (5)  
10 Brilliant rendition of 'The Four Seasons' gets you a very long way (9)  
11 Eastern cavorting found to be most intimate (7)  
12 Dared to go off after Swiss cheese (7)  
13 Diarrhoea is usually said to follow the revolutionary communists (5)  
15 Has the power to be cooler (3)  
16 Grant picked up to obtain colourful property (3)  
17 It's very Spanish to go back and make an expression of appreciation for the food (3)  
19 Variant causing moronic rioting (7)  
20 Loud argument is what is rotten at the heart of London (3)  
23 Surprisingly approximately 27% of psychopaths work for MI6 (3)  
24 Still taking part in the Olympic Games (3)  
25 Mummy's boy is involved in Nazi organisation trickery on the eastern border (5)  
27 Heard bear roar in reserve (5-2)  
29 A way of demonstrating a lack of belief in His team, unfortunately (7)  
32 Most uninhibited jerks hesitate around mid-afternoon (9)  
33 It's a thankless task in woodwork to hide a joint (5)

### Down

- 1 Chews noisily when turning round pen (4)  
2 Walkers make lots of use of this motion to ingest a load of tasteless rubbish (6)  
3 In Chitty Chitty Bang Bang was Richard briefly with vehicle in front of this earthwork? (4)  
4 Blockhead is one of third rate band (4)  
5 Concert I play following example of self-obsessed individual (10)  
6 Infection caught in first year accommodation (4)  
7 He agreed to be horrible to bowlers to give an example (8)  
8 A pair of rodents (one missing its tail) - I bet there were more of them by this point... (6)  
13/14 Much loved family feature that Boris Johnson treats without seriousness as leader (3,5)  
15 Knuckle-dragging cousin treats eczema on hip without using ointment initially (10)  
16 Solo backflip performed in thankless task for a 13 14 voice (5)  
18 Organised screams about a butcher (8)  
21 Reason for openers to want helmets on 4th July (3)  
22 Title given to man discovered in film with American casualty (6)  
26 Relationship within the borders of Surrey is moving in a provocative way (6)  
28 Vegetarian dish is the renowned creator of whizzpoppers (4)  
29 No 10 work event has dumped its premier in a way that shows taste (4)  
30 The ambassador, Bill Noggin (4)  
31 Lacking in self-assertiveness, get married and scream! (4)

Andrew Tatham

**The solution to last month's crossword is on page 26.**



**RESIDENTIAL • COMMERCIAL  
AGRICULTURAL • SCHOOLS • ACOUSTIC  
HOARDING • GATES • SECURITY**

**RICHARDSON & BRADS FENCING LTD**  
**T: 01306 640 143 - 01483 414 745**  
E: [INFO@RBFENCINGLTD.CO.UK](mailto:INFO@RBFENCINGLTD.CO.UK)  
W: [WWW.RBFENCINGLTD.CO.UK](http://WWW.RBFENCINGLTD.CO.UK)  
A: 168 SOUTH STREET, DORKING, SURREY, RH4 2ES  
UNIT 45 MARTLANDS INDUSTRIAL ESTATE, SMARTS HEATH LANE, MAYFORD, GU22 0RQ

## J S Wilson


Mickleham

# Carpentry & Building Services



Extensions ~ Conversions  
Refurbishments ~ Property Maintenance  
Fully guaranteed ~ Fully insured  
*One call WILL solve it all*


Contact Jason on: 07761 926684 or 01372 379359  
[info@jasonswilson.co.uk](mailto:info@jasonswilson.co.uk)



## MEABY & Co

solicitors

**Strength & wisdom in law & business since 1848**



Meaby & Co Solicitors sits proudly in the heart of Dorking High Street providing expert legal advice to individuals and businesses throughout the town and its surrounding area. With additional offices throughout London, our experienced team, our 5\* Google reviews and award winning service will ensure that all of your legal needs are supported on your doorstep.

**Specialising in:**

|                                   |                       |                            |
|-----------------------------------|-----------------------|----------------------------|
| Residential & Commercial Property | Fraud & Private Crime | Reputation Protection      |
| Wills, Trusts & Probate           | LGBT Experts          | Commercial & Corporate Law |
| Litigation and Mediation          | Employment Law        | Media & Entertainment      |
| Crisis Management                 | Family & Divorce Law  | Lease Extensions           |

Drop by our offices at 159 High Street, Dorking RH4 1AD or contact our switchboard on 01306 884432.  
Need advice elsewhere? We can assist. We have branch offices in Camberwell, Soho & Chigwell.

**Switchboard:** 01306 884432 [www.meaby.co.uk](http://www.meaby.co.uk) @MeabyandCo meaby-&co MeabyandCo meabyandco



## Need help with your accounts?

Running a business needs time and energy – don't waste your time working on your accounts when you can work on your business instead!

At a4c we provide fixed fee accountancy solutions with friendly support throughout the year. Services include accounts, tax returns, VAT, payroll, book-keeping etc.

Friendly, approachable and local to Dorking – we enjoy getting to know our clients so call us today for a no obligation chat.

**We LOVE numbers so YOU don't have to!**

**01737 652852**

[esther@a4cgroup.co.uk](mailto:esther@a4cgroup.co.uk)

[www.a4cgroup.co.uk](http://www.a4cgroup.co.uk)



**RANMORE  
RENOVATIONS**

### LOCAL BUILDER

New bathroom installation specialist,  
plumbing/heating,  
electrics, plastering & tiling,  
decorating, Karndean flooring.  
All building works and property maintenance undertaken.  
All works guaranteed  
36 years' experience

---

Please contact Damian  
07940 599845 / 01306 880332  
[musgrovebuild@gmail.com](mailto:musgrovebuild@gmail.com)



## 01306 88 55 33

**For quotes or to make a booking  
email us on: [Enquiries@dorkingtaxis.co.uk](mailto:Enquiries@dorkingtaxis.co.uk)**

**[www.dorkingtaxis.co.uk](http://www.dorkingtaxis.co.uk)**

- 4 / 6 / 8 Seaters
- Airport specialists
- Ferry ports & Eurostar
- Courier services available
- Home to School Transport service available
- Long distance journeys welcome
- All drivers & vehicles are fully vetted by MVDC & Surrey County Council
- Lady drivers available on request
- All major card payments accepted



A local, award-winning business supporting people living in Epsom and Mole Valley, enabling them to remain living independently AT HOME as well as providing companionship and colour to peoples lives.

**RATED AS OUTSTANDING BY CARE QUALITY COMMISSION**

Committed to providing a quality, trusted and consistent home care service, we only recruit local CareGivers and match every CareGiver to every client so the same person will call each time.

**01372 741544**

[simon.burrowes@homeinstead-epsom.co.uk](mailto:simon.burrowes@homeinstead-epsom.co.uk)

[www.homeinstead.co.uk/epsom](http://www.homeinstead.co.uk/epsom)

## John Wadsworth



**CALL NOW FOR YOUR FREE VALUATION  
01372 450500**

[www.johnwadsworth.co.uk](http://www.johnwadsworth.co.uk) [sales@johnwadsworth.co.uk](mailto:sales@johnwadsworth.co.uk)  
*A professional efficient and friendly service*