

MICKLEHAM PARISH Magazine

A community magazine for Mickleham and Westhumble



A.N. Colwell 1984

November 2022

PROFESSIONAL CARPET & UPHOLSTERY CLEANING

- Local family running company
- Over 100's 5-star Reviews
- Award-Winning Customer Service
- Safe for Kids, Pets, and the Environment
- Effective against dirt & stains from drinks, food, makeup, pets & more

**SURREY
MAIDS**

- | | |
|--|--------------------------------------|
| REGULAR CLEANING | DEEP CLEANING |
| • Professional Equipment • | • Moving out/in services • |
| • Trained Staff • Task List Provided • | • Seasonal Cleaning • Tenancy • |
| • DBS Checked • Fully Insured • | • Oven Cleaning • Windows Cleaning • |
| • Flexible Hours • Easy Payments • | • Commercial Cleaning • Schools • |

PATTY PLUS 01306 866288
SERVICES LTD OFFICE@PATTY.PLUS
WWW.PATTY.PLUS

Bullimores



Accountants for Life
Tax • Accounts • Probate
Inheritance Tax &
Executorship

T: 01306 880880

E: partners@bullimores.co.uk

W: www.bullimores.co.uk

Bullimores LLP licensed to carry out the reserved legal activity of non-contentious probate in England & Wales by the ICAEW

MICKLEHAM PARISH Magazine

November
2022

Mickleham Parish Magazine

A community magazine for Mickleham and Westhumble published under the auspices of Mickleham PCC with an independent editorial panel.

The magazine is published at the beginning of each month except January and August.

COPY DEADLINE
DECEMBER MAGAZINE
Sunday
6th November

send to:

Sue Tatham

St Anthony Pilgrim's Way
Westhumble

Dorking RH5 6AW

01306 882547

editor@micklehammag.co.uk

Contributions in any form are welcome as are good quality photographs. There is no charge for advertising local charity and community events. However the editors reserve the right to shorten omit or reformat articles submitted for publication depending on space.



Printed by Holbrooks Printers
Portsmouth

Mickleham Rectory

Hello everyone

I have been thinking a bit about church. You might think that should always be in my mind but the busyness of November for the church has prompted me to reflect on what church is really all about.

Church is both the building and the people. The building is there to facilitate all the functions of church. We do have a beautiful historic building which we spend a lot of time and money looking after, but it was not built as a monument. It is there to be used and is a reminder of the presence of God with us; something we particularly focus on as Advent begins (27th November this year) and we begin to think about the coming of God as his Son Jesus. We mark the start of Advent in spiritual and in more aesthetic ways as we light up our Christmas trees to bring the hope of Christmas to our village.

Church is where Christians over many centuries have met to worship our loving and gracious God, to pray for ourselves, for our parish and for our world, to learn about Jesus our saviour and the Bible, it is where we celebrate festivals and are christened, married and buried. For many centuries the church was the main venue for village events too and so it is very fitting, and I think wonderful that we have several concerts booked for November where people of any faith or none can come and be inspired by music. We are also very pleased to host the annual village Service of Remembrance, on 13th November, in church and then gather by the war memorial for the two-minute silence in our churchyard.

We also are encouraged by Jesus to love our neighbours (near and far), and we go out from church to serve those in need and do what we can to support charities. The service on Shoebox Sunday 6th November will be for all ages where we will collect shoe boxes filled with gifts for children in Ukraine and many of the concerts and events that we will host in our building or in the village hall will have a collection for people to donate to charity. We also like to feel that our church is contributing to our local community and so lunches are being organised in the village hall, food is collected for foodbanks and fun events such as the Scalextric evening are laid on to encourage people to connect with their neighbours. We want our church to be at the heart of the community.

Church has many functions and can be perceived in many ways but central to everything is the love we have for Jesus and the desire to love and serve those around us. Do join our welcoming community at our services and events. I hope to see you in November!

God Bless

Sandra

The Rev'd Dr Sandra Faccini Parish Priest



Stepping Stones

MORE THAN JUST A PUB

CAFÉ-BAR

Serving Morning Coffee and Afternoon Teas

RESTAURANT & ALFRESCO DINING

Serving fresh classic-style pub favourites

Live music events Take-aways available

Available for functions / private parties / celebrations / family gatherings

Dog friendly

Last Monday night of the
month from 7.30 pm

01306 889932

steppingstonespub@gmail.com

www.steppingstonesdorking.co.uk

Please check website for up-to-date menus
events and current opening times

Sherlock Funeral Service

*Sherlock Funeral Service is an
Independent family owned business,
established over 100 years*

- Private Service Chapel & Rest Rooms
- Home visits arranged if required
- Pre-Paid Funeral Plans available
- Free Parking

Telephone: 01306 882266

Trellis House, 190 South Street, Dorking RH4 2ES.

Email: office@sherlockandsons.co.uk



Funeral Directors & Monumental Masons

St Michael's Church Services

10 am Sunday Services available on Zoom

Joining information for both Zoom and telephone users is available in Pews News Online each week. If you would like to join us by Zoom then contact Alison Wood for the codes or to ask her to include you on the emailing list for Pews News: admin@micklehamchurch.org.uk / phone 01372 376443. We hope as many of you as possible will be able to join us for worship.

Please refer to Pews News Online for the latest information. If you missed any of the services or would like to revisit them all are available on the church YouTube channel: <https://youtube.com/channel/UCI4pbewCT91iZhcd0EjJBlw>



Alpha is back!

After the successful and enjoyable Alpha Course last year we are planning to hold another one. It is a great opportunity to learn about and discuss the Christian faith. The start date is Monday 16th January, from 7 to 9 pm and it will then continue every Monday for 10 to 12 weeks. It will be held at Chapel Farm in Westhumble. To find out more or sign up please email Andy on diamo1@hotmail.co.uk or phone 077789775354. We are also looking for some simple admin support so if you could offer an hour or so a week for around 12 weeks please do get in touch.



Bible Study

Monday Evening Group
8 - 9 pm

3 Cleveland Court, Westhumble
Contact Amanda Wadsworth
aewadsworth@hotmail.com

Thursday Morning Group
11 am - 12.30 pm

Abbotts Cottage, Mickleham
Contact Alison Wood
01372 376443
alison.wood29@btinternet.com
ALL WELCOME TO EITHER GROUP



First Saturday of the month Coffee Morning at Westhumble Chapel

5th November
Come along between
10 am and noon
for coffee and cake £1.
Free drinks for children
Everyone welcome
For further information call
Jonathan Blake
07787 126966



Men's and Women's Saturday Breakfasts at the Stepping Stones

9 - 10 AM

A social gathering open to everyone

WOMEN'S BREAKFAST

3RD SATURDAYS

19th NOVEMBER

Book with: Stephanie Randall
0773 6933 482
srandall55@gmail.com

MEN'S BREAKFAST

4TH SATURDAYS

26th November

Book with: Andy Diamond
diamo1@hotmail.co.uk

Tea @3

Monday 21st November

Host: Frances Presley
Fredley Lodge
Old London Road
Mickleham
01306 882473

ALL WELCOME
TRANSPORT AVAILABLE

Future Hosts Needed

Please get in touch with Julia if you
are willing to help

siberrman@btinternet.com



Mickleham Village Hall
3.30 to 5 pm

Thursday
17th
November

All children must
be accompanied
by an adult

Come along and join us for family fun,
games, songs, food and crafts.
For children aged 3 - 10

ALL ARE WELCOME

To reserve your place or find out more details, email Sarah Blake
SarahJbl@outlook.com

ST MICHAEL AND ALL ANGELS CHURCH



Mickleham Parish Magazine 'Christmas Card'

As in past years readers who would like to send Christmas greetings to their local friends by way of the magazine and donate the money saved on cards and postage to charity should contact Sue Tatham. 01306 882547 editor@micklehammag.co.uk

The copy deadline for the December magazine is Sunday 6th November

The charge is £10 per person (£20 per couple), or more if you like.

Proceeds again this year will go to St Michael's C of E Infant School
and St Michael's Community Nursery.



Got your shoebox? Operation Christmas Child Shoebox Sunday - 6th November

Once again St Michael's Church will be joining with
St Michael's Infant School to contribute to the Samaritan's Purse
Operation Christmas Child Appeal.

Leaflets are available in church and there is also information
about what to pack on the Samaritan's Purse website.

If you are unable to shop and pack a box yourself,
there is the option to pack a box online or make a donation instead:
<https://www.samaritans-purse.org.uk/what-we-do/operation-christmas-child/>

The Crib Service 2022 Christmas Eve 4 pm

It hardly seems possible that it is
nearly twelve months since over 100
of us gathered in Westhumble bonfire
field for our Crib Service. The time of
preparation is here again and as usual
we need lots of families to help us.
If you or any member of your family
would like to take part, or help in any
way, please contact me as soon as
possible. Last year adults as well as
children took part which is a wonderful
way of showing that this is an event

for everyone,
not just children.
So, if you are
a frustrated
shepherd, a
would-be wise
man or an angel
in disguise,
please come
forward, we would love to include you.

Anne Weaver 01306 883932
Weaver_anne@hotmail.com



Harvest Supper

This year's Harvest Supper was great
fun with delicious food and
challenging quizzes. We were asked
to match church choir members'
baby pictures with their present-day
photographs - not an easy task. We
fared better on the general knowledge
questions and identifying leaves.
Team prizes included bags of jelly
babies and jars of home-made jam.
Our grateful thanks also to Catherine
Diffey and all her helpers (including
her delightful family members) who
organised and delivered an excellent
event. It even made
a profit of £500 for
the church and £50
for The Meeting
Room charity.



Christmas Café at The Chapel Saturday 10th December 2 to 4 pm

Crafts/Cakes/Chat

If you would like to have
a stall - no charge
just a donation.

Please contact
jennyhudlass01@gmail.com



Carol Singing In the Westhumble Chapel Ruins

followed by refreshments at Chapel Farm
Tuesday 20th December - 6 pm

Round the Pubs

Friday 23th December
More details next month

Thursday 22nd December Ex-Crew Get Together
Stepping Stones 7pm

Superb professional
cleaning of carpets
oriental rugs
upholstery curtains
and leather
Guardsman
anti-stain protection

- spot stain and odour removal
- leather cleaning specialists
- flame retarding
- dust mite reduction service
- all work fully insured & guaranteed

For a free no obligation quotation call today
Freephone 0808 144 9071
John Joannides 28 Bracken Close Bookham

Safeclean
The furnishing care specialists from GUARDSMAN



*Pinehurst
Rest Home*

We aim to provide an excellent service at competitive rates supporting emotional physical and social needs of our clients always respecting and protecting their status as adults.

- Residential and 24-hour daycare
- Excellent cuisine
- Facilities for disabled: medic bath / lift
- Home doctor in attendance
- Single & sharing rooms
- Convalescent & short stays
- Lounge with TV & piano
- Separate dining room
- Physiotherapist chiropodist & hairdresser
- Entertainment: theatre visits / parties & cabarets held on premises

**National Trust Road Box Hill
Mickleham Dorking Surrey RH5 6BY**
Telephone: 01306 889942 / 888253

*Dorking
Decorators*
PROFESSIONAL
PAINTERS & DECORATORS

Established Local Family Business

- Over 20 years' experience
- Internal & External
- Commercial & Domestic
- Friendly First Class Service
- Surrey / Sussex / Greater London

**FREE ESTIMATES
01306 640418**
www.dorkingdecorators.co.uk
As approved by Checkatrade

51° NORTH
EAT • DRINK • SHOP

**An exciting new place
to eat, drink, shop**

- Morning Coffee and pastries
- Breakfast choices
- Selection of lunch dishes
- Afternoon teas & cakes
- Selection of savouries
- Wander around our food store selection

fiftyone.degreesnorth@yahoo.com

01306 320455

@51.Degrees.North.Mickleham @51.degreesnorth

London Road
(Bottom of Bytton Hill)
Mickleham
Surrey. RH5 6EH

PRIVE

LUXURY HAIR SALON

8 High Street Leatherhead
01372 360302

www.privelondon.co.uk i prive_leatherhead



SIMON HOOPER
For all your decorating needs...

Professional friendly and speedy service at all times

Fully insured	Insurance work
Exterior painting	Interior decorating
Free quotes & advice	Oil & Water-based products
Commercial/Domestic work	Wallpaper hanging & removal
07947 135 376	0208 3978 962
www.slhdecoratingservices.com	



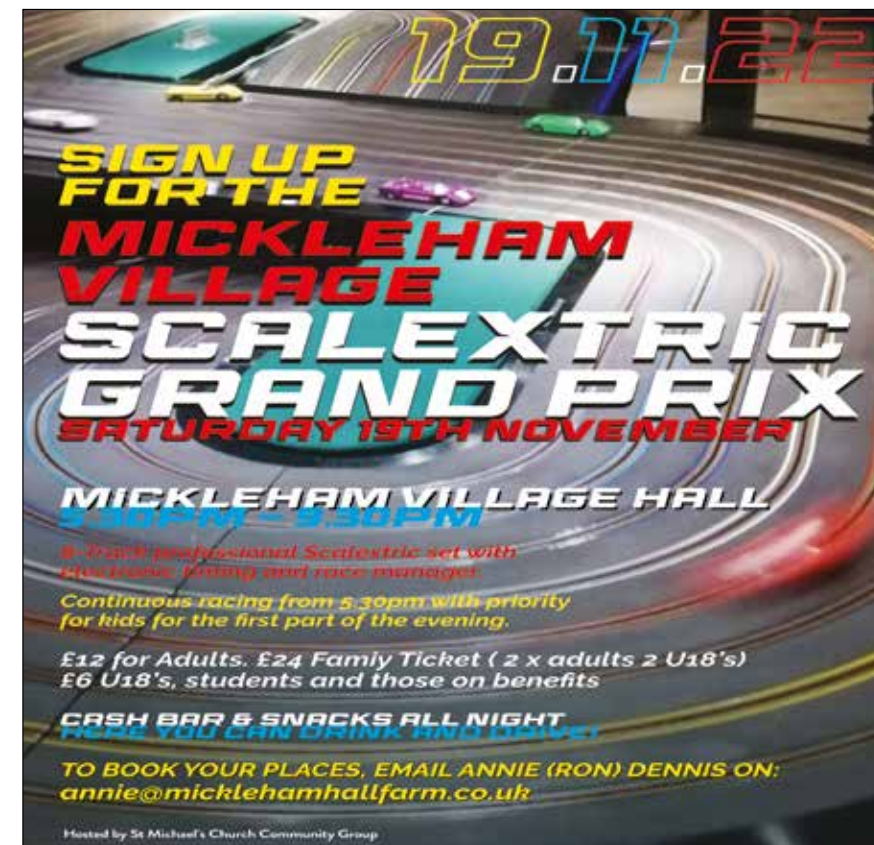
**St Michael's Church Community Group
2022**

Advent Windows

It has been decided to go ahead with Advent Windows for a third year, though the format will change slightly. We intend to have fewer events but mainly in locations where there may be more than a single contributor. That is not to say that single contributors will not be welcome, but it seems to make more sense to have events on perhaps a weekly or bi-weekly basis where one or more windows can be combined and possibly refreshments offered. For example, this has worked well before with Mickleham Hall, and the courtyard off Swanworth Lane also seems a good location.

Permissions and volunteers will be brought together over the next week or two and more details on dates and spare dates given then. The event will opened, as last year, with the ceremonial lighting of the church Christmas trees on Sunday 27th November. Mark Day

Examples from last year



Scalextric Evening

We are hoping that a week after the time of writing, sufficient parishioners and their families and friends will have signed up to give us the confidence that this will be a viable and fun event. BUT, AT THE TIME YOU READ THIS, THERE WILL STILL BE A FORTNIGHT for you to put together a table/team/family group and do the necessary... ie book and pay, please.

The event will be run on an 8-track module measuring c4.5 x 2.1m: not like that figure of eight 1960s boys toy.

There will be fastest lap timing and a 'Race Director'. There is no limit to the number of 'goes' you can have beyond those of fairness and common sense, a bit like Formula 1 practice really, recording best laps. With finals for fastest and slowest toward the end. The event will run from 5.30-9.30 pm to allow kids and families to attend, and those of greater age but a sense of nostalgia to follow. Bank details:

Will Dennis Sort 04-00-04:
A/C No 93513746 Ref 'Scalextric'.



Autumn Soup Lunch
Thursday 3rd November
12.30 for 1 pm Mickleham Village Hall

This will be the third autumn soup and cheese lunch hosted by St Michael's Church Community Group. These have been well attended (and most enjoyable) with a choice of delicious home-made soups and lively discussions. Please do

join us. To help with catering please sign up with Mary Banfield on 07733 322477. No charge will be made, but donations to cover the cost of the food will be welcome, with any profits going to charity.

Beating the Bounds

24th September: Westhumble/Norbury Park
15th October: Mickleham/Box Hill

Beating the Bounds is a centuries old tradition aimed at reminding everyone of boundaries that were important in parishioners' lives such as where they could graze their livestock and the limits between different jurisdictions. The rector and other dignitaries would process round the parish bounds once a year while children would carry willow wands to beat the boundary markers in the form of stones, gateposts, walls and trees. With the advent of maps and satellite navigation it can be all too easy to forget what is around us, and where these often invisible boundaries lie. The two excellent events initiated by the Mickleham and Westhumble Local History Group and organised by

a special committee made up of Roger Davis, Will Dennis, Barbara Jones, Frances Presley and Stephanie Randall saw us revisit the paths of yesteryear. On a beautiful Saturday in September and another in October, Sandra lead a group of two-legged (those not using walking poles), three-legged (those using one walking pole) and four-legged (those using two walking poles) rambles as well as a number of very well-behaved dogs around the highways and byways of Westhumble and Mickleham. The work that had gone in to mapping the route, clear signposting, regular stops for worship and beating (not often that you get both of those things in the same sentence anymore) were really appreciated by

the more than twenty five human and half a dozen canine participants. On both occasions the weather was perfect, sunny but not too hot and thankfully dry. Introductions were made, friendships formed and a helping hand given where needed. It is often in nature that we can see for ourselves the everyday miracles that make up all our lives, the ground we walk on, the food we eat, the water we drink and the beauty that surpasses anything that we can make. For me Beating the Bounds was a wonderful way to remind me of all that we have to be thankful for living in such a beautiful, bountiful and blessed area. Thank you to all those who made such a special time possible

Catherine Diffey



Beating the bounds group at the Norbury Park viewpoint on the Westhumble day



Beating the bounds group on the Donkey Green, Box Hill

Flower Arranging in St Michael's

St Michael's Church is fortunate to have a team who decorate the church each week with floral arrangements and for feasts such as Harvest Festival and Christmas. Some churches no longer have such a team so no longer have any decorations.

Last year the Royal Horticultural Society made the following statement: 'Floral foam uses microplastics and is currently non-recyclable, with this in mind we have come to the decision to ban the use of floral foam at RHS Shows from 2021 and have asked floral designers at RHS Shows this year to trial alternative products where possible.' When the foam is thrown out, it may take years to degrade and even then it can add to the microplastics in the environment which can be ingested by wildlife.

Alison Wood, who currently organises the church flower rota, suggested to the team who decorate the church that we should also look for alternatives. With this in mind Alison invited her friend Jane Fleming, a church flower arranger with 35 years' experience who also does wedding and funeral flowers, to demonstrate the use of chicken wire. Eleven members of the team took part, others were unable to be there. We spent an hour watching Jane demonstrate, then another hour or so making our own arrangements. Those of us who are old enough will remember that was the way flowers were arranged before floral foam arrived on the scene. I was somewhat sceptical. However, Jane completely changed my mind



The beautiful arrangement by Jane Fleming

and, I think, those of the others who attended her workshop. We saw how best to shape the wire and anchor it to the container and how best to prepare the stems of shrubs and flowers to make arranging them as easy as possible.

You can see from the photos how different the arrangements were and how successful. Next time you are in church do study the flowers and enjoy the work of the team who have provided them. The workshop was

hosted by Richard and Julia Siberry and they also generously allowed us to cut some foliage and use some of their precious dahlias from their lovely garden. Many thanks to Jane (who generously donated her arrangement to the church), Alison, Richard and Julia.

If you would like to join the team do get in touch with Alison. New members are always welcome. Minimal experience necessary, existing members would be happy to give you the benefit of theirs.

Charlotte Daruwalla

Some of the 'students' arrangements



The Dorking Group of Artists – November Exhibition
Sunday 27th November to Sunday 4th December – Denbies Wine Estate

Fully Experienced Carer/Companion

- PART-TIME LIVE-IN • DRIVING LICENCE HOLDER •
- HOURS to SUIT • BABY/CHILD SITTING •
- EXCELLENT REFERENCES • FULLY INSURED •

Reliable, Kind and Caring
07748 743 732

High Quality, Professional Home Care and Companionship Enabling People in Mole Valley & Surrey to Remain Living Independently at Home

TreeLineTM Services Ltd. YOUR LOCAL PROFESSIONAL TREE HEALTH CARE SPECIALISTS

Felling, Pruning, Stump Removal, Planting, Logs,
Woodchip, Air Spade Services, Consultancy

Call us on **01306 741800**
office@treeline.co.uk • www.treeline.co.uk



Your visiting PHYSIOTHERAPIST

SUE JUDD MCSP HCPC

40 years of experience.
All your requirements for elderly
mobilisation & post-operative
rehabilitation.

07834 227999 sue-judd@sky.com

EDE BROS

• REMOVALS • STORAGE • SHIPPING •

- Since 1926, Capel-based and family owned
- STRESS-FREE, local, national & worldwide
- Contact us for your **FREE** estimate...

01306 711293
edebros.co.uk



Gill and Paula would like to warmly welcome you to Aspen Care offering assistance to enable you to live in the comfort of your own home with care and companionship.

- A happy alternative to a care home
- Cover while your family or carer takes a holiday
- Recuperation and rehabilitation following a hospital stay
- All aspects of personal care medication and meal prep
- Dementia care disability chronic & critical conditions end of life care
- Accompaniment to appointments

Call for a chat to discuss your requirements.

We look forward to hearing from you.

01737 354821 info@aspensliveincare.co.uk www.aspensliveincare.co.uk



YOUR LOCAL FARM SHOP ON DENBIES WINE ESTATE farm shop deli plant centre

Open daily 9.30 to 5.30 and Sundays 10 to 5 Free parking

Local produce, Seasonal food, plants and flowers
Christmas Food Fair Sunday 20th November noon – 4pm

We deliver veg bags and more to the local area on Tuesdays and Fridays

see www.vgfarmshop.com or email vegbag@vgfarmshop.com for details

LOCAL • NATURAL • ETHICAL 01306 880720 www.vgfarmshop.com



Heritage Concert in St Michael's on 18th September

David Fishwick organ and piano Gillian Spragg piano Elizabeth Searle mezzo-soprano and violin



Clockwise from top left: Elizabeth Searle, David Fishwick,
Gillian Spragg, Anthony Morris

Although this concert had been arranged well before the death of Queen Elizabeth II, I surmise that the content was revised into what became a memorial concert to Her Majesty. The three soloists complimented each other

organ concerto by Handel and a prelude and fugue by Bach for piano. We were treated to the first public performance on the piano of Anthony Morris' *Preludes* - beautifully constructed pieces expertly and delicately executed.

in choosing items that were related to the mood of that time.

The first piece, the wonderful *Toccata and Fugue* in D minor by Bach for the organ, set the mood for the rest of the concert. Arias from the *St John Passion*, *The Magnificat* and *Dido and Aeneas* were interspersed with a movement from an

I hope Anthony who was in the audience was pleased with how well they were received. For three Schubert songs David, our organist, accompanied our young mezzo-soprano on the piano, sympathetically and tenderly, - a delight.

The highlight of the afternoon, for me, was the *Ave Maria* in D flat for piano by Liszt and the *Grande Paraphrase de Concert 'God Save The King'* also by Liszt. The organ solos included the *Divertissement* by Louis Vierne. This is an unusual piece which, in places, sounds like a rendering from the fairground! The finale of the concert brought together the three soloists on organ, piano and (for our singer) the violin, playing 'Ave Maria' or for its full title *Meditation sur le Premier Prelude de J.S.Bach*. It was indeed a fitting concert for the Heritage Weekend.

Beverley Mehta

St Michael's Church Community Group Live Theatre returns to Mickleham

We are pleased to be putting on a production of *Posting Letters to the Moon* on Saturday 4th February in Mickleham Village Hall, starring Lucy Fleming and Simon Williams. Buy your loved ones a ticket, for the Christmas present with a difference!



Celia Johnson

This delightful two-hander is a romantic, funny and touching portrait of life during the Second World War, featuring readings of letters

between Oscar-nominated actress Celia Johnson (*Brief Encounter*) and her explorer and writer husband Peter Fleming (brother of James Bond creator Ian Fleming), posted to India and the Far East during the war working for Military Intelligence. The letters are read by their daughter Lucy Fleming (*Survivors*, *The Avengers*) and her husband Simon Williams (Justin in *The Archers*, *EastEnders*, *Upstairs Downstairs*).

These letters tell of Celia's experiences during the war - from coping with a large isolated house full of evacuated children, learning to drive a tractor, dealing with rationing, occasional holidays in Cornwall where she took to surfing, and all the while accepting offers, when she could get away, to act - for David Lean, Noel Coward, wartime propaganda films, broadcasts, all sorts, and ultimately in 1945 starring in the classic film *Brief Encounter*. Not only are the letters highly engaging, but they also provide a fascinating historical insight into that time of austerity and fear.

www.postingletterstothemoon.com

Doors open 6.30 pm, performance starts at 7.30 pm. Cash bar. Tickets £18.50 adults; £9.50 under 18s, students and those on benefits; from annie@micklehamhallfarm.co.uk. Profits to St Michael's Church and other local charities.

'... simply spellbinding performance... revealing an abundance of love and affection between ordinary people caught in extraordinary times... a theatrical gem'. British Theatre Guide

Friends of Box Hill Reptile Talk

Monday

7th November 7 pm

Warren Farm Barns, Headley Lane, Dorking RH5 6DG

By Steve Langham, Chair of the Surrey Amphibian and Reptile Group (SARG)

Book with Lyn Richards

01737 842889

lyn@mra.uk.net

Friends of Juniper Hall

Lecture and Lunch

27 Years'
Birdwatching
in the Garden

by Rob Jacques

Tuesday

15th November 11 am

Book with Suzy Hughes

suzy@suzyhughes.co.uk

Lest we forget – A visit to Normandy

In July Virginia and I visited the Normandy Beaches with a military history group from Buckingham University. We had all read a lot about D-Day and had watched films such as 'The Longest Day' but it was a very special experience to walk on Gold and Omaha Beaches and to pause and imagine what it must have been like for the British and American soldiers who landed there early in the morning of 6th June 1944.

I had just finished reading James Holland's 'Brothers in Arms' about the extraordinary bravery and suffering of the men of a British armoured regiment who came ashore in their Sherman tanks on D-Day and fought right through

until the end of the war. Having served in an armoured regiment 25 years later I can imagine what it must have been like for them inside those noisy, dirty, and dangerous machines though I was never attacked, as they were, by an anti-tank weapon.

The guide for the tour was a Lt Colonel in today's German Army, and we were able to study what it was like for the soldiers on both sides. He took us inside one of the concrete fortifications still standing and asked us to imagine what it must have been like for a young soldier to look out and see the greatest armada the world had ever known heading straight for him.

We went to the British memorial above


Gold Beach, and to the huge American cemetery above Omaha Beach. We also visited the German cemetery at La Cambe where we found a wreath laid by the British Military Attaché. At Arromanches we saw what is left of the Mulberry Harbour, and we saw the German radar station at Douvres-la-Délivrande which had tracked the incoming allied aircraft until it was destroyed. We also went to the Merville Battery, and to Pegasus Bridge where we stood on the spot where Major Howard's glider had landed.

Throughout our visit we stayed in Bayeux – a charming Normandy town, where we had the opportunity to see the amazing tapestry and the cathedral.

Michael Stephen



MICKLEHAM CHORAL SOCIETY
CONCERT FOR REMEMBRANCE SUNDAY
 Conductor – Juliet Hornby Accompanist – Judith Flint
Sunday 13th November 6.30 pm
St Michael's Church, Mickleham
 Tickets – Adults £10, Children under 12 £5
 Mike Benson 01306 876901 secretary@micklehamchoral.org.uk



WE ARE MACMILLAN. CANCER SUPPORT

An enormous thank you from Liz Absalom who hosted the Macmillan Coffee Morning at Chapel Farm on 23rd September. Despite awful weather the support was strong, and many cups of coffee, cakes and apple pies were purchased, raising an amazing total of £1,840 for the charity. Liz is extremely grateful to everyone who came, made donations or placed orders for apple pies.



Mickleham Choral Society
CAROL PARTY
Friday 16th December
 More details next month

Not such a holy land?

We would like to thank the many generous people in Mickleham and Westhumble who have donated to our joint 140th birthday project, cycling across Palestine in aid of Medical Aid for Palestinians. We went from Jenin in the north via Nablus and Taybeh to Jericho, down to Hebron and back via Bethlehem to Jerusalem. Will cycled 240 km in heat peaking at 40°C and over some fearsome hills; Annie cycled some of that and also hiked 10 miles across the desert. We were a diverse group, including two Brummies of Pakistani origin, three Glaswegians, three Old Etonians, two trade unionists and one writer for the Morning Star. What we had in common was a desire to improve the lot of the Palestinians.

Often known as the Holy Land, this country is nothing short of a humanitarian tragedy. Imagine, if you will, not being able to visit your relatives who live in the next village two kilometres across the valley, because occupying forces have built illegal settlements in between and connected them up with a wall, cutting off your access across what in law was your land. Hundreds of such walls have been built in the last 20 years or so. The process was just beginning when we first visited the country, and it is a lot worse now. In Hebron the settlers have taken over land right in the city centre, and residents and visitors alike are under constant watch by armed Israeli soldiers.

Unsurprisingly, this leads to conflict. Both Jenin and Nablus are hotbeds of resistance. As we checked into our hotel in Nablus we heard gunfire and were asked not to leave the hotel. There had been several fatalities in both cities over the last few weeks. In between we visited Sebastia, a major archaeological site said to be where John the Baptist was beheaded, – tear-gassed last week in an Israeli army raid.

Irrespective, it is a beautiful place. Whatever your religious beliefs, you cannot fail to be moved by the golden city that is Jerusalem, site of the holiest places in Judaism and Christianity, and the third holiest in Islam. Or the desert that runs down to the Dead Sea, framed by centuries-old monasteries clinging to the side of the hills. This is also where the Dead Sea Scrolls were found. History and religion are all around you.

Bethlehem, by contrast, is dominated by concrete Berlin-style walls topped with barbed wire and dotted with military watchtowers looking over refugee camps. It is hard to believe that this can be the birthplace of Christianity. Love Thy Neighbour rings a bit hollow as you cycle through the checkpoints and look over the site where the shepherds watched their flocks, to the walls and barbed wire in the middle distance. Just down the road, in Hebron, the shrine of Abraham has been divided into a mosque and a synagogue, with separate entrances and a military checkpoint between the two.



Will and Annie

The people are charming, but we cannot see any resolution. The two-state solution proposed by the Oslo Accord in 1993 has been undermined by the Israeli settlements and the building of walls on Palestinian land, and it is no longer viable. In the circumstances providing aid and medical facilities to these unhappy people is probably all we can do, and we are grateful to have had the opportunity to help. And grateful to our many friends who supported us. We met all our own costs, so all donations have gone straight to the charity, less only JustGiving's fee.

There are some photos with this article but, if you want to see more, go to our website <https://www.justgiving.com/fundraising/will-annie> and click on the top right of the main photograph, where it says 'view gallery', and you can swipe right through a selection of photos.

Will and Annie Dennis



Separation Wall, Hebron

Banksy, refugee camp, Bethlehem

A Confidential & Safe Space to Talk

Counselling • Mind & Body Healing
Reiki • Relax into Nature Sessions
Face to face/Online/Outdoors/Distance
Supporting you with compassion and
understanding through challenging times



Call Judith Cobby
on 01306 882229
or 07790 614448

www.healing-inspiration.co.uk

TIM LANGLEY

Experienced craftsman

ANTIQUE RESTORATION
CABINET MAKING
FRENCH POLISHING

Free estimates collection & delivery
01372 457700 07960 486455

Ballroom Dancing Latin American Dancing Professional Training [IDTA]

Private lessons on
Tuesday afternoons and
Sunday evenings

At Mickleham Village Hall
Dell Close Mickleham Surrey RH5 6EE
07748 867 732
vmvdancing@gmail.com



IDTA Qualified Teacher

Julie Watts Family Law

AN AFFORDABLE AND EXPERIENCED PROFESSIONAL
ALTERNATIVE TO TRADITIONAL SOLICITORS

- Divorce • Arrangements for children • Finances
- Court Proceedings

PROUD TO PROVIDE A DIFFERENT KIND OF SERVICE

- Affordable fees • Straight-talking advice
- Practical real support

Contact me for a consultation
07808 572157 juliewattsfamilylaw.co.uk

Mike Palmer Electrical Services

Part P registered electrician

From additional lighting and
sockets to complete rewires
Fully insured Registered with the NICEIC

07866 930483 mike@mikepalmer.biz
Boxhill Way Strood Green Betchworth RH3 7HY



Regular Lawn Mowing
Lawn Care & turfing
Pressure Washing
Hedge Trimming

General Garden Maintenance

phil@philsmowingdorking.co.uk

07905 160765



KING WILLIAM IV

Dear friends and neighbours

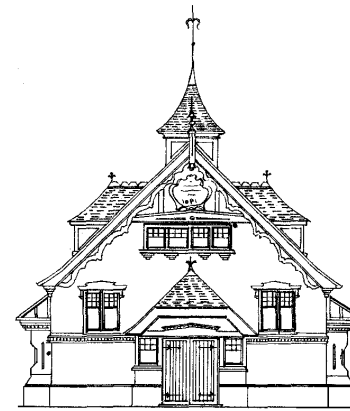
Our post-summer review had us reflecting on some tough moments, starting with an initial lack of staff and the prospect of sky-rocketing costs. Yet we have much to be grateful for, our new patio & sunny summer worked brilliantly, we gained some great experienced staff and very supportive neighbours and regulars – thank you! It will also be a tough winter for many with cost-of-living increases. Some good news:

as our gas prices fixed till 2024, we won't be scrimping on heating, so a toasty King Willie will await this winter. Our new autumn/winter menu features 'Winter Warmers' with at least three top-quality and delicious main meal dishes at £10 pounds or under. Kat and I have also been working on other menu dishes: comfort food like pies, moules frites, liver 'n' bacon, amongst other surprises. Check out our festive menu on our website and book early for Christmas lunch.

Also during the World Cup in we will be showing the big games (Wednesdays & Sundays) - my pick is Brazil.

Hope to see you very soon, Eamonn & Anne

Byttom Hill Mickleham 01372 372590 www.thekingwilliamiv.com



Mickleham Village Hall available for hire

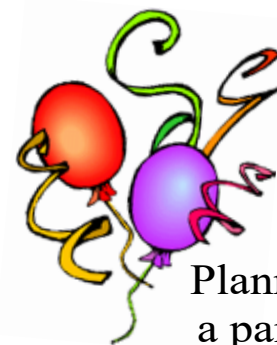
Hall bookings
Table & chair hire

Deanna Darnell

07790 941 601

bookings@micklehamvh.co.uk

www.micklehamvillagehall.org.uk



Planning
a party?

Equipment
available for hire

China ~ Cutlery

Electric urn

Equipment hire

Mary Banfield

01372 373912

admin@micklehamvh.co.uk

Community Directory

BOX HILL AND HEADLEY HEATH (National Trust) 01306 888793
Lead Ranger – Federico Ghittoni (Fede) 07342 080109
Federico.Ghittoni@nationaltrust.org.uk
Friends of Box Hill – Chair Lyn Richards 01737 842889
lyn@mra.uk.net

BOX HILL SCHOOL 01372 374814
Headmaster – Cory Lowde HMPA@boxhillschool.com

DORKING CRICKET CLUB
Chairman – Andrew Homewood homewooda@hotmail.co.uk

DORKING GROUP OF ARTISTS
Exhibition Secretary – Patricia Booth patriciabooth100@gmail.com

DORKING LAWN TENNIS & SQUASH CLUB
Jim Cattermole 01306 883629
jim.cattermole@uwclub.net

DORKING RUGBY CLUB
Jim Evans 07789 176417
jim@flintcottage.net

THE GARDEN SHED
Pauline Davis 07759 646353
paulinemdavis@gmail.com
Susie Gowenlock 07768 923088
susiegowenlock@gmail.com

JUNIPER HALL FIELD CENTRE 01306 734501
enquiries.jh@field-studies-council.org
Head of Centre – Maddy Jones m.jones@field-studies-council.org
Friends of Juniper Hall – Suzy Hughes 01483 281935
suzy@suzyhughes.co.uk

MICKLEHAM CHILDREN'S PLAYGROUND ASSOCIATION
Secretary – Sarah Parfitt 07767 891772
sarah@sarahparfitt.com
www.micklehamchoral.org.uk

MICKLEHAM CHORAL SOCIETY
THURSDAYS 8 - 10 pm – MICKLEHAM VILLAGE HALL
Conductor – Juliet Hornby 01372 373106
Secretary – Mike Benson secretary@micklehamchoral.org.uk

MICKLEHAM OLD BOX HILLIANS FOOTBALL CLUB
Secretary – John Atewell 01372 374745

MICKLEHAM PARISH COUNCIL
SEE WEBSITE FOR MEETING DATES www.micklehampc.org.uk
Chairman – Rev'd David Ireland 01372 379381
rev.ireland43@btinternet.com
clerkatmpc@gmail.com

Parish Clerk – Feena Graham
MICKLEHAM PARISH MAGAZINE
Editor – Sue Tatham 01306 882547
editor@micklehammag.co.uk
Co-Editor – Charlotte Daruwalla 01306 884025
editor@micklehammag.co.uk

MICKLEHAM VILLAGE HALL
Chairman – Ben Tatham 01306 882547
chairman@micklehamvh.co.uk
Bookings Manager – Deanna Darnell 07790 941601
bookings@micklehamvh.co.uk

ST MICHAEL'S CHURCH

*within the United Benefice
of Leatherhead and Mickleham*

INCUMBENT — The Rev'd Will Perry 01372 372313

PARISH PRIEST

The Rev'd Dr Sandra Faccini * 01372 417664
07763 488961

parishpriest@micklehamchurch.org.uk

* Main working days: Monday, Tuesday and Sunday

CHURCHWARDENS

Timothy Mathieson 07555 597163

TimothyMathieson@aol.com

Catherine Diffey 07790 473167

Mickleham@diffey.me.uk

PARISH ADMINISTRATOR

Alison Wood 01372 376443

admin@micklehamchurch.org.uk

PCC SECRETARY

Caroline Jones 07304271376

pccsecretary@micklehamchurch.org.uk

TREASURER

Richard Siberry 01372 375303

pcctreasurer@micklehamchurch.org.uk

ORGANIST

David Fishwick 0208 7732420

organist@micklehamchurch.org.uk

WEDDINGS CO-ORDINATOR

Elaine Machin 01372 724972

weddings@micklehamchurch.org.uk

BAPTISMS CO-ORDINATOR

Vickie Leney 01306 884054

baptisms@micklehamchurch.org.uk

FUNERALS ORGANISER

Brian Wilcox 01372 374730

dbrianwilcox@btinternet.com

WEBSITE MANAGER

Kelvin Pritchard 07770 280410

website@micklehamchurch.org.uk

PCC ECO GROUP

David Kennington 01372 36230

davidkennington144@gmail.com

www.micklehamchurch.org.uk

*For information about services for other
denominations see website pages.*

Search on 'Churches Together Mole Valley'

REGISTERS

BAPTISM IN THE WESTHUMBLE CHAPEL OF EASE

25th September Lara Julia Ann, daughter of Rachel
and Maurice von Bertele Arelza

BLESSING OF MARRIAGE

28th September Susan McGrath and David Scoffield

MARRIAGE

8th October Michaela Morris and Dominic Driver

CALENDAR FOR NOVEMBER

3 Thursday 12.30 pm
5 Saturday 10 am

Autumn Soup Lunch in the Village Hall
Coffee Morning at Westhumble Chapel
Finishing touches to the Westhumble bonfire
Guy Fawkes procession starts from junction of
Burney Road, Chapel Lane and Adlers Lane
followed by lighting the bonfire and fireworks
in the Westhumble Field

5.45 pm

6 **SHOEBOX SUNDAY** 11 am
6 pm

Copy deadline for December parish magazine

7 Monday 9.15 -11.30 am

Open Morning at St Michael's Infant School
Friends of Box Hill Reptile Talk at Warren Farm Barns
Prayer Group Compline in church

7 pm

8 Tuesday 7 pm

9 Wednesday

13 **REMEMBRANCE SUNDAY** 8 am
10 am

Holy Communion in church
Service of Remembrance followed by two-minutes
silence at the War Memorial
No Matins at Westhumble Chapel
Choral Society's Concert for Remembrance

6.30 pm

15 Tuesday 11 am

Friends of Juniper Hall lecture and lunch – 27 Years'
Birdwatching in the Garden

17 Thursday 3.30 pm

Messy Church in the Village Hall

18 Friday 5.30 pm

Scalextric Evening in the Village Hall

19 Saturday 9 am

Women's Breakfast at the Stepping Stones

20 **SUNDAY** 8 am
10 am

Holy Communion in church

Holy Communion in church

21 Monday 3 pm

Tea@3 at Fredley Lodge

Garden Shed *Creating Movement in your Garden* talk
at the Stepping Stones

7.30 pm

22 Tuesday 7 pm

Prayer Group Compline in church

26 Saturday 9 am

Men's Breakfast at the Stepping Stones

27 **ADVENT SUNDAY** 8 am
10 am
4 pm

BCP Holy Communion at Chapel

Holy Communion in church

Peter and the Wolf A Little Concert for Children

followed by ceremonial lighting of the church

Christmas trees

Dates for your diary

Saturday 3rd December
Saturday 10th December
Saturday 10th December
Friday 16th December
Sunday 18th December
Tuesday 20th December
Thursday 22nd December
Friday 23rd December
Saturday 24th December
Monday 16th January
Saturday 4th February

Community Nursery's Christmas Fair
Garden Shed Christmas Decoration Workshop
Christmas Café
Choral Society's Carol Party
Carols by Candlelight in church
Carol Singing in the Chapel Ruins
Ex-Crew Get Together
Carolling Round the Pubs
Christmas Eve Crib Service
Alpha Course starts
Live Theatre returns to Mickleham

MEMBERS OF THE PAROCHIAL CHURCH COUNCIL

Sarah Blake	Elaine Machin
Mark Day	Tim Mathieson
Andy Diamond	Beverley Mehta
Catherine Diffey	Elizabeth Moughton
Caroline Jones	Kelvin Pritchard
Vickie Leney	Richard Siberry

ST MICHAEL'S CHURCH COMMUNITY GROUP COMMITTEE

Mary Banfield	01372 373912
	mgbbmw@aol.com
Kay Cain	07736 281752
	kay__jay@hotmail.co.uk
Mark Day	07852 117249
	mickleham@hotmail.com
Andy Diamond	07789 775354
	diamo1@hotmail.co.uk
Frances Presley	01306 882473
	jasempres@gmail.com
Amy Ward	07709 199292
	amycatrionaward@gmail.com

ST MICHAEL'S CHURCH COMMUNITY GROUP

HELPING HANDS INCLUDING FOOD FOR FRIENDS

A service for all residents of Mickleham and Westhumble

Examples of services we offer:

- Essential shopping / collection of prescriptions
- Changing library books
- Small tasks: eg changing fuses, altering clocks etc
- Dog walking
- Visiting / befriending
- Home-cooked meals for local families going through difficult times

Requests to:

Will Dennis 07903 842674 **wdwdennis@icloud.com**
(who can put requests onto WhatsApp)
Mary Banfield 01372 373912 **mgbbmw@aol.com**
Frances Presley 01306 882473 **jasempres@gmail.com**

*More helpers needed – please contact
Frances if you can spare some time.*



Community Directory

Continued from page 13

MICKLEHAM & WESTHUMBLE BADMINTON CLUB
Membership Secretary Sarah Blake tinkerbell0044@hotmail.com

MICKLEHAM CRICKET CLUB
Membership contact Will Dennis 07903 842674
will@micklehamhallfarm.co.uk

MICKLEHAM & WESTHUMBLE HORTICULTURAL SOCIETY
Chairman – David Kennington 01372 362309
www.surreycommunity.info/mwhs davidkennington144@gmail.com

MICKLEHAM AND WESTHUMBLE LOCAL HISTORY GROUP
Chairman – Ben Tatham 01306 882547
ben@thetathams.co.uk
www.micklehamwesthumblehistory.co.uk

MOLE VALLEY DISTRICT COUNCIL 01306 885001
Councillor Elsie Rosam 01306 885695
elsierosam29@gmail.com

THE ARTS SOCIETIES (FORMERLY NADFAS)
Betchworth – Mary Venning 01306 883301
Dorking – Sue Tatham 01306 882547
Leatherhead – Sarah Sheridan 01306 883699

ST MICHAEL'S CHURCH OF ENGLAND (A) INFANT SCHOOL 01372 373717
info@stmichaels-dorking.surrey.sch.uk
Friends of St Michael's School – friendsofstmichaels2017@gmail.com

ST MICHAEL'S COMMUNITY NURSERY
WEEKDAY MORNINGS – MICKLEHAM VILLAGE HALL
Supervisor – Hilary Budd 01372 361021
stmichaelsnursery@btinternet.com

SURREY COUNTY COUNCIL 03456 009 009
Councillor – Hazel Watson 01306 880120
hva.watson@btinternet.com

SURREY WILDLIFE TRUST 01483 795440
info@surreywt.org.uk

TREE WARDEN
David Kennington 07546 952521
davidkennington144@gmail.com

WESTHUMBLE NEIGHBOURHOOD WATCH
Lead Co-ordinator – David Allbeury 07860 227451
westhumble.neighbourhood.watch@gmail.com

WhatsApp Group
Will Dennis will@micklehamhallfarm.co.uk

ADDITIONAL CONTACT INFORMATION

CITIZENS ADVICE
Dorking – Lyons Court 01306 732302
Leatherhead – Swan Mews High Street 01306 732301

CRIMESTOPPERS 0800 555 111

POLICE Non-emergencies 101

(often quicker to make online report) <https://report.police.uk/>

Neighbourhood Specialist Team – Dorking Rural East
General enquiries molevalley@surrey.pnn.police.uk

NHS Urgent and emergency care 111

Babysitting by local youngsters

Those listed below are at least
14 years old.

Gracie Owen **07790 900649
Annabelle Prosser*

07443 634179

Maisy Presley* 07720 657327

Martha Pearce 07514 080005

Rory Lee ** 07973 360950

Ellie Kim 07773 395575

Chelsea Edwards 07834 695816

Edward Moran 07740 088124

Daisy Armitage **07580 473812

Olivia Newby 07703 110363

* Holidays only

** Parent's mobile number

*If you would like to add your
name to this list please get in
touch with Sue Tatham*

01306 882547

editor@micklehammag.co.uk

No Charge

Advertising in the Parish Magazine

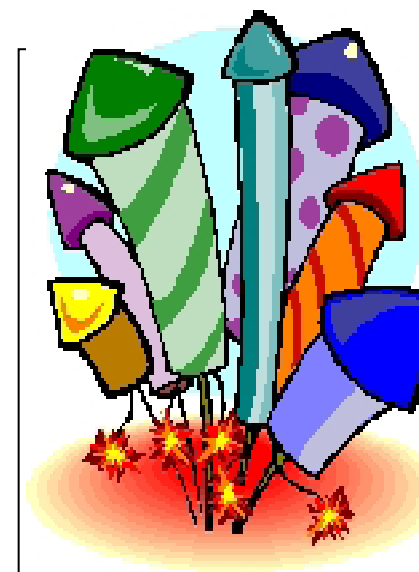
Please contact

Sue Tatham (as above)

Small ads: a nominal fee is
charged for ads where items or
services are bought or sold.

We have been advised to print
the following reminder:

*We cannot guarantee the
quality of the goods and
services offered by our
advertisers.*



Westhumble Bonfire & Fireworks Saturday 5th November

Starting at 5.45 pm with a torchlight procession from the
junction of Burney Road, Chapel Lane and Adlers Lane

Bonfire lit soon after procession reaches the
Westhumble field off Adlers Lane

Soup and sausages available from the barbecue
for a small charge. Donations of £7 per person collected on the night.

*Please remember that a bonfire is a dangerous place even before
it is lit, so please keep small children and pets under supervision.*

Help wanted with the finishing touches to the bonfire on Saturday 5th November from 10 am

Mickleham & Westhumble Horticultural Society Bulk Discount Compost Order

We are delighted to report that the first MWHs Compost Order was a great success! We had an excellent response from members and were able to put together an impressive order totalling 242 bags of stable manure and 48 bags of multi-purpose compost. In fact, so impressive that delivery required two lorries!

Collection took place on the morning of Saturday 8th October from the Village Hall car park in glorious sunshine, quite a contrast to delivery in the rain the previous morning! Bags of compost and manure were speedily loaded into a variety of car boots by Miriam and

Sophie (unfortunately not available for unloading at the other end!), and we can safely say that small cars can fit more bags in than you might think! A big thank you to everyone who has supported the scheme, and particular thanks to our team on the day consisting of Lucy Adshead, Miriam Jones, David Kennington and Sophie Adshead.

We look forward to offering another opportunity for MWHs members to purchase more compost and manure at discount prices in the Spring. Membership is only £5 annually per household, so please do join us, if only to benefit from this fantastic

discount! Details for the Spring 2023 order will be in next month's magazine. (Membership enquiries to Judith Long see below)

Present prices are:

Country Naturals Stable Manure £3.50/ 80L bag
Sylvagrow Multi-purpose Compost £6.70/ 50L bag

Membership Information

Annual subscriptions of £5 per household are due on 1st January 2023. Current members for whom we have email addresses should have received payment details already. We are encouraging payment by standing order or online bank transfer although we will still accept cash. Membership fees enable us to hold our popular shows in Mickleham Village Hall each year and all members are entered into a prize draw at the AGM for garden vouchers of £50. Members are also able to purchase compost and manure at a significant discount.

2023 Show dates

Saturday 22nd April – Spring Show & AGM
Saturday 16th September – Village Show

For further information please contact the Membership Secretary, Judith Long:
judith.long2@btinternet.com 07904 160961



Sophie Adshead, Miriam Jones and David Kennington assisting with compost collection

Book Review *remembering wonder*

By Andrew Tatham

When the editor asked if I would write about Andrew Tatham's latest book for the parish magazine I thought – oh, just a collection of photos, I'll just skim through it and pick out the best ones. How wrong I was.

Andrew took well over 2000 photos in the 20-month period from March 2020, but whittled them down to the 203 that are in the book. They are mostly taken near where he lives in Norfolk, a few in Surrey, even one in London, but also one or two when he at last went 'abroad' to Wales. Most of the photos have an accompanying date and note on where and why taken, the 'why' helping us to understand the thinking behind each one.

People reacted in many different ways to lockdown and, at the beginning, Andrew found that sending photos of Norfolk to a friend in South Africa helped him to cope with sudden lack of company. Like Topsy, this grew into his including more friends and his family. The result is this amazing book that he has put together with some of the most beautiful images that I have ever seen. I happen to love seeing the 'bones' of trees in winter and there are many such photos. Some standing alone, others in the distance and a hedge that could have been barbed wire. But we also see



One of the photographs from 'remembering wonder'

the lovely lime green of newly arrived beech leaves in Surrey.

Andrew's eye for colour is incredible whether it be in the morning, daytime, evening or night sky, the yellow of gorse, rape or the sun lighting up wheat and the yellow/gold of sunflowers, the red of a tulip or his father's anorak, a stretch of bluebells, or the mauve of buddleia. There is a stark bright red poppy and I wish that Mickleham would be as considerate as the red GVI letter box indicating a 3.35 pm collection instead of our 9 am one. And I must not forget Andrew's bright blue shoes! Being so near the Norfolk coastline you see the sea itself in its many guises, sometimes flat calm, sometimes with waves breaking looking like whipped cream falling on the beach. Does the sun umbrella with its stripes belong to the Legal and General Insurance Company and I wonder if the fishermen caught anything?

However, the photos that will stay in my mind the longest are the incredible

clouds that Andrew captured. All through the book you will find clear blue skies, every formation of clouds you can think of, often with a moon, threatening, peaceful, prospective, or just plain beautiful. There is every shade of red through to yellow and deep orange either at dawn or dusk, and a double page spread of deep pink clouds to 'rival the Northern Lights'.

We see 'selfies' of Andrew with various lengths of hair and beard, and in the text we appreciate how he experienced the highs and lows, as did thousands of others, during the enforced loneliness. But what a legacy he has given us.

Frances Presley

PS Would make a very nice Christmas present.

BUYING THE BOOK

remembering wonder is £14, available from Amazon or via Sue Tatham – the latter has the advantage that you can have a good look before you buy and the author gets to keep substantially more of the book price (and will thus donate £2 a book to St Michael's Nursery). Any queries, please contact Andrew: andrew@groupphoto.co.uk



Can you translate this diagram into words? Say what you see.

Midday T

Answer on page 26

The Lying-in-State queue, 17/18 September

On the Saturday night my brother and I headed up to London to join the queue. It was a peculiar experience, quietly entering a park we had never visited before, with hundreds of unknown people, joining a snaking queue miles long, to pay our respects to a woman whom the majority of us had never met.

The Queen had an extraordinary ability to bring people together during her lifetime, from small numbers in a soft-diplomacy setting, up to vast numbers at celebrations on the Mall. But on that night one really felt this gentle but immensely powerful magic which she brought, continuing to pull people together even beyond her death.

That feeling remained for our twelve hours of queueing. I noticed other things as well. Firstly how well-behaved and considerate everyone was. People coming together to pay their respects, would probably be a fairly respectful bunch. But nevertheless, it was remarkable how orderly it all was. It seemed that everybody wanted, in however small a way, to embody the best of human and British values, and to queue in a manner of which The Queen would have approved. It made me wonder what might be achieved if that attitude extended to all areas of public life.

Inescapable to notice, was what an impressive city London really is. The initial impact was on rounding a corner in Southwark to see the Thames open out with Tower Bridge in the distance. It was so beautiful and iconic, the towers lit purple and the cables shining white. (The traffic arches were lit blue and yellow inside – a perfectly understated geopolitical signal of the time.) Alongside the various imaginatively-shaped skyscrapers on the North bank, St Paul's stood as the last word in architecture opposite where we waited for an agonising two hours up to 5 am. But the city saved the best for last and as we came to Westminster at sunrise we looked at the Westminster Clock Tower like we had never seen it before. The Houses of Parliament were a breath-taking backdrop for the last two hours, and I was glad to have the time to appreciate it.



The final thing was the sheer diversity of people in the queue. No one 'type' of person was queueing – everybody seemed to be there. All ages, nationalities, dress codes (people in blazers and medals alongside people in tracksuits), all accents, the strong and fit alongside people on crutches. The queue was no picnic, matching in duration an Ironman triathlon, but with less foot action. The middle of the night was a bit tedious and I am full of respect for those less physically able people who stuck with it all as well.

After passing the heaviest security I have ever seen, all of a sudden, we were up a flight of steps into the Palace of Westminster, filtering into lanes to

pass the catafalque. Others might not have felt as moved as I was in those two or three minutes in Westminster Hall, but few would deny the gravity of that moment. I felt as if our long history was at that moment and in that place open and present for my participation – not something abstract or as in books or documentaries. It was there and then, and I was part of it. The most wonderful thing was that having 'done our time' in the queue, overwhelmed though I was by the ancient building, the glittering guards, the coffin draped in the royal standard and the sheer silence, I did not feel out of place. I was at home, and I was welcome, and I am so glad I went.

Duncan Irvine

My Memory of the Queen

When I was a student in London, I lived in a decrepit house with seven other people in Notting Hill: it was not such a posh area then. The Queen's official birthday was in June and *en masse* the household decided to attend in person. So, we arose very early, surprising for students, and jumped on the 52 bus to reach Victoria about 6.30 am. At that time the general public were allowed to stand around the Victoria Memorial in front of Buckingham Palace and we were lucky enough to be there. We had a longish wait for the ceremony of Trooping Colour but there was lots of activity beforehand with military bands.

The Queen rode a horse on ceremonial occasions and for eighteen consecutive years, from 1969 to 1986, this was on a black mare named Burmese, a gift from the Royal Canadian Mounted Police.

Burmese was retired in 1986, and after that the Queen attended in a carriage. I often wondered whose decision that was; the official line was that there was not enough time to train another horse. So, on that beautiful sunny June day, the bands and cavalry proceeded past with the Queen wearing a red military uniform, riding Burmese. Suddenly, there was a crack from away to my left and a ker-fuffle in the crowd, but I had my eyes on the Queen, she reined in her horse ... then carried on as if nothing had happened.

The Queen was told to stop horse riding in October 2021 because of 'mobility issues' but rode in Windsor as recently as June. Amazing. So, I never actually met the Queen, but I was very close, and my abiding memorial of that day was her grace, her horsemanship, and her dignity.

Stephanie Randall

A series of recitals in St Michael's Church by talented local musicians and their friends

Sundays at Six
6th November

Violin Recital
Clare Kennington

accompanied by Tracy Kennington

Works to include Kreutzer Sonata - Beethoven.

In aid of Special Care Baby Unit, Royal Surrey Hospital, Guildford

Come along at six o'clock on a Sunday evening and enjoy lovely music in the tranquil surroundings of our ancient parish church.

No ticket needed – retiring collection.



CARPET REVIVING CARPETS & UPHOLSTERY IN SURREY

Covering Dorking & all surrounding areas

We clean to a professional standard using eco-friendly chemicals and the latest equipment.

Offering a thorough survey, clean and customer satisfaction. Certified and insured.

Call 01306 740035 / 07747 122128
or visit www.carpetrevival.co.uk
to book a free home visit/quotation

STEVE LAWRENCE

PLUMBING HEATING ELECTRICS

Boiler installation, maintenance and repair

Based in Mickleham Local references
30+ years' experience

07760 266718
stevenlaw37@hotmail.com

Vivien Cresswell Made-to-measure Soft Furnishings

Curtains Roman Blinds Cushions

Extensive range
of fabrics



01737 843858
info@cresswellscurtains.co.uk
www.vivienecresswell.co.uk

Rowlatt Garden Services

RGS

EST.1985

**Gardens large and small
we maintain them all**

All aspects of private and commercial garden
and estate maintenance landscaping undertaken
Fencing grass & hedge cutting

Telephone: 01737 841524 Mobile: 07887 838666
References available upon request



Joseph

De Decorators

• Painting • Decorating • Wallpapering • Plastering • Tiling
Mickleham based 40 years' experience

01372 372331 07973 358 932

Suitable items for the foodbank collection

Tinned veg / tomatoes / soup / sauces / baked beans
Powdered milk / UHT milk (green and blue only)
Rice pudding / long life sponge puddings
Coffee / tea bags / long life fruit juice
Pasta / rice / pulses / instant mash
Jam / honey / marmalade / spreads
Sugar (500g bags only)

Washing-up and cleaning products
Tissues / paper towels / tampons
Men's / women's toiletries
Laundry products
Nappies
Pet food

**Please do not include
out-of-date items or those
that require refrigeration**



LOCAL FOOD BANK COLLECTION POINTS

MICKLEHAM

Garden Corner off Old London Road
Mary Banfield 01372 373912

WESTHUMBLE

St Anthony Pilgrims Way
Sue Tatham 01306 882547

**Robust plastic carrier bags wanted for delivering parish magazines and food bank items.
Please leave at food bank collection points – see above**



When our speaker on 'Rose Care' was unable to join us, Chris and

John Clachan, laden with samples from their garden, stepped in at the last minute to share advice on gardening during autumn, along with rose and garden care.

At this time of year as summer borders fade, colour and interest can still be achieved from plants including sedum, michaelmas daises, rudbeckias, echinacea and Japanese anemones. After flowering, many of these plants benefit from being pruned and cut back to tidy borders and protect them

Autumn Garden Care

from strong winds, but advice is now changing as, with winter approaching they provide interest in the garden on a frosty morning and the seeds offer food for birds and wildlife. If left, they can be cut back and tidied once winter has passed and before new shoots appear.

Not all plants benefit from pruning in autumn including cornus and most roses. The new stems of cornus provide colour for the following winter and should be pruned at the start of their growing season between February and March. For roses, it depends on the type being grown. To maintain shape, climbers and ramblers should be given a light prune when they finish flowering. With the exception of ramblers, which should then be pruned in autumn, all other roses receive

their main prune during January and February. When pruning, be careful not to dispose of diseased waste in your compost to prevent spread. As most of us here grow roses on chalk, add well-rotted manure or compost annually, leaving a 'doughnut' area around the base of the rose to prevent rotting.

Other plants that offer autumn and winter interest and colour include ornamental grasses, rose species with shiny red hips, crab apple fruits and the fragrant fiery orange tassel blooms of hamamelis (witch hazel), borne on spindly branches.

Despite the short notice, Chris and John provided interesting and helpful gardening advice and we are looking forward to welcoming them again in October for Gardener's Questions.

Cathy Lee

local Artists Open Studio

Unique gifts and one-of-a-kind items available

Rostellan, Pilgrims Close
Westhumble RH5 6AR

Open 11am-4 pm

Nov 26th to 28th Dec 1st to 4th

Presenting the work of

Joanna Lloyd – Glass

Dawn Thornhill – Paper Art

Keira Graham – Textiles

Izabella Meehan – Jewellery



Guest artist the esteemed
Frank Taylor – acrylic



GARDEN SHED EVENTS

CREATING MOVEMENT IN YOUR WINTER GARDEN

a talk by Benjamin Pope

Monday 21st November at 7.30 pm

The Stepping Stones Pub, Westhumble

Tickets £6 on the door – no need to book

Christmas Workshop

MAKE A WREATH or TABLE DECORATION

Saturday 10th December

Mickleham Village Hall 9.15 am – 12.30 pm

Cost £35 Refreshments included – Booking essential

See our website for details www.gardenshed.club

Any Questions Pauline Davis 07759 646353
or paulinemdavis@gmail.com

New Octogenarians



On 4th September ten local war babies – all born in 1942, celebrated their 80th birthdays with tea, bubbles and cake at a party hosted by Mary Banfield.

From left: Rosemary Glover, Ian Wright, Jo Brown, Barry Lowry, Mary Banfield, Mary Huggins, Beverley Mehta, Navin Mehta, Wendy Wyatt, Jane Denny

Do you need a plasterer?

Over 25 years' experience working on extensions, renovations, new-build and conversion projects for builders and domestic customers alike.

Our work is to a high standard and we are fast. Give Chris a call for a free no obligation quotation.



**CHRIS C GUY
PLASTERING LTD**

ALL ASPECTS OF INTERNAL & EXTERNAL PLASTERING
07740 860560 chrisguyplastering@gmail.com

We provide the best possible care for your feet

**Book your appointment:
01372 454583**



**Bookham
Chiropody & Podiatry Clinic**
Diagnosis, Expert Treatment & Professional Care
for Your Feet

29 High Street, Great Bookham KT23 4AA
www.bookhamchiropody-podiatry.co.uk

Domestic Appliance Repairs

30 years' experience repairing and installing
all gas and electric domestic appliances



- Cookers Microwaves
- Dishwashers
- Washing machines
- Fridges / Freezers
- Water coolers
- Coffee machines
- Tumble dryers

Contact: Andy 07895 719706
andy@kirksdomestics.co.uk



07871 051661 / 01372 458616
timskerrittgroundworks.co.uk

TimSkerritt
LANDSCAPE & GROUNDWORKS

Turn your vision into a reality

Tim Skerritt Landscape & Groundworks offers a comprehensive range of services to both commercial and domestic clients across Surrey.

From hard landscaping to extensive site excavations, we offer a high quality, honest, reliable and competitively priced service, guaranteed to meet all your needs. Contact us today to find out more.



**SURREY HILLS
HEATING LTD**

**DOMESTIC BOILER SERVICING
AND BREAKDOWN**

OIL, LPG & GAS BOILERS

Call Dathan on: 07944 575970
sales@surreyhillsh heating.co.uk
www.surreyhillsh heating.co.uk



PAINTING DECORATING

ANDREW CLARK 07800 796 737

INTERIOR & EXTERIOR • CARPENTRY • HANDYMAN

Dorking Pest Control Services

Local Authority Approved Contractors



Our Services include: Wasps Bee Swarms Hornets Rats Mice
Squirrels Fleas Flies Ants Cockroaches Bed Bugs
Rabbits Moles Foxes and Deer



• Domestic Commercial and Industrial • Contract Work • Preventative Control Programmes

Experts in pest control throughout Surrey

Office: 01306 743001 Ivor: 07710 117491 Chris: 07971 519415

www.dorkingpestcontrol.com

CRYPTIC DELICACIES

Last month's golden squares could be made into BUTTERFLIES, with linked clues being SKIPPER, TORTOISESHELL, (Red or White) ADMIRAL, (Purple) EMPEROR, CABBAGE (White), RINGLET, PEACOCK, & COMMA.

1 Dog is on schedule to return with someone who has the keys to the museum = CURATOR

'Dog' = CUR, 'schedule' = ROTA then returned

5 Cap'n Bob gets by... = SKIPPER

'Bob' = SKIP, 'by' = PER

8 Forbid Boris's brother to get an essential ingredient to what could be called true Conservative grass? = BANJO

'Forbid' = BAN, 'Boris's brother' = JO (now Baron Johnson of Marylebone). You need to turn 'true Conservative' into Blue to get Bluegrass, the music which has the banjo at its heart. Slightly naughty definition, but breaking the rules seems to fit with the clue...

11 Large dogs hate barking like Brexit negotiators always seem to be = AT LOGGERHEADS

Anagram ('barking' is as in 'mad')

13 Dangle a carrot in front of some of the guests at the exact moment I celebrate = ENTICE

Hidden word ('some of')

16 No dropping off in the sack as minion does a lively dance = INSOMNIA
Anagram

24 Hitler loses to crooked cat known for having irregular marks = TORTOISESHELL Anagram ('crooked')

26 Damage company car, an old Land Rover? = MARCO POLO

'Damage' = MAR, 'company' = CO, 'car' = POLO

28 Replaced mad liar with one in charge of sinking ships = ADMIRAL

Anagram – the definition is ambiguous as to which ships are sinking (sadly not so ambiguous in the metaphorical sense implied by the clue)

29 For example, George V became this when putting member into flat beer alongside the men = EMPEROR

'member' = MP, 'flat beer' is beer without a head so EER, 'the men' = OR (for 'other ranks' in the army)

1 How old a taxi is can be said to determine what soup can be made of = CABBAGE

'How old a taxi is' = CAB AGE, sounds like...

2 Looking for curly hair? Try outstaring letterboxes = RINGLET

Hidden word (try looking for it)

3 Lipping performance of 'Air on the G String' = THONG

'Air' = song, lipped at the beginning...

5 Vocally perform to cover silence whilst suggesting silence = SHUSHING
'Vocally perform' = SING, covers 'silence' = HUSH

6 Placidness is not even a response when asked to talk about a range of French breads(?) = PAINS

'Not even' means remove the even letters and keep the odd. Like in English, 'pain' could mean one loaf of bread or



lots of loaves of bread, but a range of different breads would be PAINS, and when asked to talk about them, you might respond 'PAINS?'

10 Dandy has a way to set brim of hat at an angle to allow for the ears = PEACOCK

'brim of hat' = PEAK, 'set at an angle' = COCK, so a way of doing that might be a PEAK COCK, sounds like...

12 Check out about one hundred craps = DICE

'Check out' = DIE, 'one hundred' = C (in Roman numerals – note that the I is in DIE and not part of the one hundred (which is not IC)

24 Captain Morgan's after the first couple to make a vibrating sound = THRUM

'Captain Morgan's' = RUM, 'The first couple' = the first two letters of 'the'

I hope this helps and it would be great to get any feedback via andrewt@andrewtatham.co.uk Andrew

Immie's London Marathon 2022

I am sure there are better ways to take in the views of London, but I can definitely recommend the London Marathon! The atmosphere was amazing with incredible support all the way around, music blasting out and the colourful sea of runners stretching into the distance.

I was running to raise money for Alopecia UK and the just over £1,500 raised will enable them to support more people effected by Alopecia. This has a personal connection because my late aunt lost all her hair very suddenly and found herself alone with a condition that is little understood and needs much more support. Alopecia UK provides support

and funds research. Thank you to everyone who sponsored me!

The train strikes added an extra level of difficulty to getting to the start line, but once across the start line the landmarks of the Cutty Sark, Tower Bridge and Embankment were all welcome sites, especially Buckingham Palace at approximately 300m from the finish!

I was really happy to complete the marathon in 4hrs 40mins and 20s, a new personal best. Shortly after finishing my words were "I'm never running a marathon again", though now they have turned into "I'd like to run another marathon, just a different one!"

Immie Adshead

A Little Concert for Children



Peter and the Wolf

narrated by David Fickling

Sunday 27th November

4 pm Approximately 30 mins long

St Michael's Church, Mickleham

With viola, flute, oboe, clarinet and bassoon

Please bring your children along for this fun introduction to instruments of the orchestra

Free entry with a retiring collection in aid of:

Tukongete Community School
Livingstone, Zambia

To book a seat please contact tracy.kennington@btinternet.com

10 Year
Manufacturer's
warranty available
with any new boiler
Oil, LPG and Gas Registered • Consult • Design • Install • Maintain

SEENERGY
INNOVATIVE ENERGY SOLUTIONS

Call for a free quote on
01306 735499
www.seenergy.co.uk
enquiries@seenergy.co.uk

Emergency 24 HOUR SERVICE
Best Buy Which? Gold Builders September 2018

Get IT Fixed, Get IT Connected
Expert Repair & Maintenance



Brockham based. No call out charges. Fully transparent quotations with no hidden costs. We make technology work for you.

Call us now on **01737 845980** ChalkHill Systems
www.chalkhillsystems.co.uk

M & R BUTLER

- GENERAL HOUSE MAINTENANCE
- EXTERNAL & INTERNAL DECORATING
- BESPOKE CARPENTRY
- LOCAL REFERENCES
- 40+ YEARS EXPERIENCE

07776256131 / 07896015771



TONY WINCH
CARPENTER, JOINER
& CABINET MAKER
www.tonywinch.com
01306 742373
07969 016 924

Building Plans
For home improvements & extensions
Including planning & building regulations
Fast efficient service at competitive rates

MICHAEL LLOYD CEng MICE
For free consultation:
Phone: 01483 205479 or 07958 791 402

RWP
Extensions and alterations often require a
Structural Engineer

Robert Wynter & Partners Ltd
01306 879875
Book House Vincent Lane
Dorking RH4 3HW

remedial roofing
For people with roof issues and deficiencies

- New roofs – slate & tiled roof specialists
- All roof repairs moss removal & gutter clearance
- Flat roofs traditional felt & GRP fibreglass
- New uPVC Fascia soffit & guttering

Obtain an up-to-date report of remedial roofing on www.checkatrade.com

ALL WORK GUARANTEED
Call us today for a FREE quotation on:
01306 304736 | 07852 833802
info@remedialroofing.co.uk www.remedialroofing.co.uk

Confederation of Roofing Contractors
The Premier Roofing Trade Association in the UK
All Members Offer Insurance Backed Guarantees



I have just checked the Nursery entry in last November's parish magazine. The seasons usually inspire activities at nursery, and I wanted to make sure I was not duplicating last year's article. Funnily enough, written on exactly the same date as this year, which has led to a somewhat sudden realisation.

Being a farmer's daughter and still connected to agriculture, I was very aware that the summer weather has led to an exceptionally early harvest. What I had not really considered was how the summer had impacted on 'uncultivated' nature. In last year's article I commented on the delights of the autumn season, in particular conkers... and on this date last year, conkers had not yet arrived in the pockets of nursery children. Yet this year we have already been playing with conkers for several weeks. I wonder what impact this will have on the gatherings of squirrels and the early fruiting of berries for birds, will they last the season ahead? Our wildlife may also need extra support this winter.

With our conker gathering we have been making conker soap. Surprisingly effective at creating suds and certainly sufficient for washing up in the mud kitchen, however, even with the cost-of-

living crisis presently on all our minds, I don't think I shall be substituting my usual washing powder for non-bio conker yet!

We had a very delightful delivery in the nursery. Thank-you to the past pupil who anonymously donated a very special hand-made bird box. We have not quite decided where to place it at time of going to press but look forward to watching which birds will make it their home in the spring.

The nursery is currently consulting with our parents regarding a potential increase in our opening hours from September 2023, possibly earlier if there is sufficient demand. If you are looking for a pre-school place for your child, please get in touch with the nursery for a tour. We are registered to accept children from the age of two and offer term time pre-school education until the child starts school.

Hilary Budd





Mickleham Village Hall Dell Close

Weekdays 9.15 am - 12.15 pm (term time)

WITH OPTIONAL LUNCH CLUB

On Mondays and Thursdays there is the option for children to stay until 2.45 p.m.

Maximum 26 children per session

• playing naturally • learning naturally

We offer an excellent range of pre-school activities for 2½ to 5 year-olds where they can learn through play in an informal friendly atmosphere.

Contact us for more information about admissions

01372 361021 www.stmichaelscommunitynursery.co.uk

Solution to the October crossword

Across: 1 Curator 5 Skipper 8 Banjo 9 Blueprint 11 At loggerheads 13 Entice 16 Insomnia 18 Catheter 19 Skates 24 Tortoiseshell 26 Marco Polo 27 Thigh 28 Admiral 29 Emperor.

Down: 1 Cabbage 2 Ringlet 3 Thong 4 Rabies 5 Shushing 6 Pains 7 Rotor 10 Peacock 12 Dice 14 Noah 15 Cheerio 17 Aerofoil 20 Teenier 21 Sulphur 22 Ashore 23 Comma 24 Thrum 25 Sit up.

BRAIN TEASER answer: Afternoon tea



Christmas Trees for Sale

If you enjoy a 'real' tree at Christmas, please consider ordering yours through The Friends of St Michael's Infant School. Proceeds will go towards upgrading our classroom equipment to enhance the learning of our 4-7-year-olds.

We will again be offering very high-quality non-drop Nordman firs for collection from the school the first weekend in December. Tree costs:

3-4 ft	£30	4-5 ft	£35
5-6 ft	£40	6-7 ft	£50
7-8 ft	£57		

To reserve your tree by Thursday 24th November email friendsofstmichaels2017@gmail.com with your name, address and phone number and confirm whether you have paid by bank transfer to:

Our business account.

Friends of St Michael's School Mickleham

Sort Code: 09-01-29

Account no: 20156527

or Paypal:

friendsofstmichaels2017@gmail.com

We would be most grateful for your support.

Amy Ward

Vice Chair of St Michael's Friends

What a fantastic autumnal month we have had!

The children have had so much fun enjoying their Forest School sessions and watching the changes to the trees and the environment over the last few weeks. The children have been learning about the different minibeasts that live in the forest and exploring making dens.

Harvest Church Service

The children paid their first visit this year to St Michael's Church at the beginning of October to celebrate harvest. All our families joined us for the event. It was a crisp but dry day and we all walked to the church together. The Year 2 children

spoke about how to save and share over harvest, how to think of others who have less and how the farmers can now enjoy a well-earned rest. The children said their words with enthusiasm and spoke beautifully.

Our Year 1 children talked about the different things they could share and save over harvest and read some lovely prayers. Our new, youngest children painted pictures of their favourite fruits and vegetables and proudly held them up for the congregation to enjoy. We sang autumn and harvest songs – a fun time was had by all.



St Michael's School

stmichaels-dorking.surrey.sch.uk/

Open Morning

We are holding our Open Morning on 7th November and are running tours throughout October and November, you can see the details on our flyer below.

Nicky Cleather
Head of School

Thinking about the ideal school for your child? Want a nurturing environment that gives your child the best start to their first few years in education. Look no further! St Michael's is a small school with plenty of space for every child. It sits in a leafy village just minutes from Dorking and Leatherhead. With surrounding natural beauty, we think St Michael's is the perfect location for an infant school setting.

Ofsted 2022
'Leaders have high expectations of what pupils can achieve academically and personally'
A pupil expressed the thoughts of other pupils and parents:
'Everyone here has a kind heart'

Individual tours can be booked by contacting the school office by phone or email: info@stmichaels-dorking.surrey.sch.uk 01372 373717

Wednesdays to Fridays from 28th September to 25th November from 9.30 – 10.30

We are holding an Open Morning and individual personalised tours with the Head of School so come and see us in action!



Messy Church 17th November see page 2

Cryptic Crossword

10, 26, 29, 8 & 25's family is mixed up in the golden squares (8)

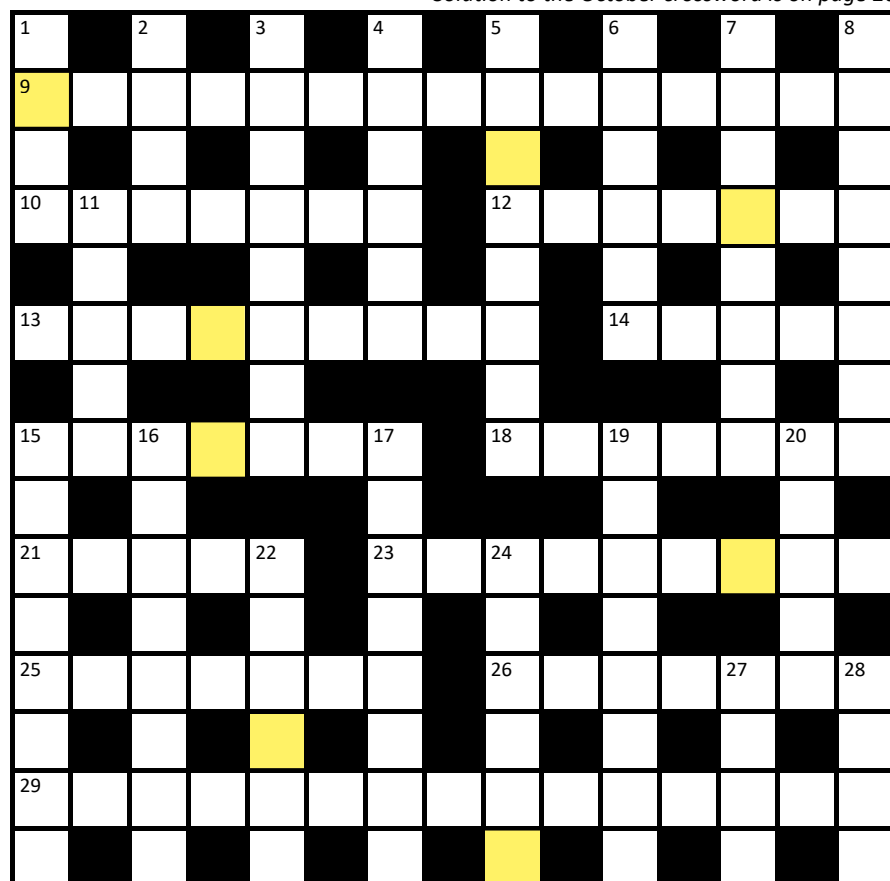
Solution to the October crossword is on page 26

Across

- 9 Playfully tease with fake bottom, one that's big and fleshy and red (9,6)
- 10 Before an afterthought, change myself into root vegetables (7)
- 12 Northern Ballet finds re-employment in the game (7)
- 13 In order to have a dip, the head of MI6 wore the disguise of a cagoule (9)
- 14 Mind bending liquid is capital - and Fritz has a way of agreeing! (5)
- 15 Mum erases nonsense without me finding a rubber (7)
- 18 Aim pint to splash over those waiting to be beaten (7)
- 21 Isadora joins with Edna in periodically going back for anoraks (5)
- 23 Shoplifters cause this to get younger? (9)
- 25 Three quarters of Eurovision act are in prison for giving this name to sweetheart (7)
- 26 After sweetheart leaves, read smut smeared in hot sauce (7)
- 29 Truss burps and loses in battle with EU growth coalition? (8,7)

Down

- 1 Join a 2 to an ear (4)
- 2 Stand up for what is fundamental? (4)



- 3 It meets a strange requirement before going ahead with a fiscal event (8)
- 4 Suggestion for someone setting out to make fires (4,2)
- 5 How to find you're allergic to being poor and having untoward relations with your family while avoiding Iraqi National Congress (4,4)
- 6 Anyhoo, Terry, you can't go out holding this thing for people to blow (6)

- 7 Soldier has no independence as half term is meant for having delusions (8)
- 8 German leader and Jewish leader losing heart when served vegetarian fare often fed to cattle (8)
- 11 Casual sweetheart in gold centre goes all the way up to somewhere above the tonsils (5)
- 15 Means of getting around carried by Dominic Absalom in 'Fantastic Beasts and Where to Find Them' (8)
- 16 Prepares for an evening out and then cancel drink (6,2)
- 17 Sleeps with both hands entwined and then has another go at getting the letters in the right place (8)
- 19 Skirts attempt to establish a proper way to run a facet of the country (8)
- 20 Is the frying pan of Africa in your portion of fettuccini, Gerald? (5)
- 22 Scarcely any boxes have the key to what makes you thin (6)
- 24 Negligent for giving two notes to some Nazis (6)
- 27 Turkish bath is returned when it doesn't have a waste outlet (4)
- 28 Toad in the hole could be cutie patootie (4)



Canines who brought their owners to beat the bounds in Westhumble

Andrew Tatham

Need help with your accounts?

Running a business needs time and energy – don't waste your time working on your accounts when you can work on your business instead!

At a4c we provide fixed fee accountancy solutions with friendly support throughout the year. Services include accounts tax returns VAT payroll book-keeping etc.

Friendly approachable and local to Dorking – we enjoy getting to know our clients so call us today for a no obligation chat.

We LOVE numbers so YOU don't have to!

01737 652852
esther@a4cgroup.co.uk
www.a4cgroup.co.uk



01306 88 55 33

For quotes or to make a booking
email us on: Enquiries@dorkingtaxis.co.uk

www.dorkingtaxis.co.uk

- 4 / 6 / 8 Seaters
- Airport specialists
- Ferry ports & Eurostar
- Courier services available
- Home to School Transport service available
- Long distance journeys welcome
- All drivers & vehicles are fully vetted by MVDC & Surrey County Council
- Lady drivers available on request
- All major card payments accepted



RANMORE RENOVATIONS

LOCAL BUILDER

New bathroom installation specialist
plumbing/heating
electrics plastering & tiling
decorating Karndean flooring.
All building works and property maintenance undertaken.
All works guaranteed
36 years' experience

Please contact Damian
07940 599845 / 01306 880332
musgrovebuild@gmail.com



A local award-winning business supporting people living in Epsom and Mole Valley enabling them to remain living independently AT HOME as well as providing companionship and colour to peoples lives.

RATED AS OUTSTANDING BY CARE QUALITY COMMISSION

Committed to providing a quality trusted and consistent home care service we only recruit local CareGivers and match every CareGiver to every client so the same person will call each time.

01372 741544

simon.burrowes@homeinstead-epsom.co.uk
www.homeinstead.co.uk/epsom

John Wadsworth



CALL NOW FOR YOUR FREE VALUATION
01372 450500

www.johnwadsworth.co.uk sales@johnwadsworth.co.uk
A professional efficient and friendly service





**RESIDENTIAL • COMMERCIAL
AGRICULTURAL • SCHOOLS • ACOUSTIC
HOARDING • GATES • SECURITY**

RICHARDSON & BRADS FENCING LTD
T: 01306 640 143 - 01483 414 745
 E: INFO@RBFENCINGLTD.CO.UK
 W: WWW.RBFENCINGLTD.CO.UK
 A: 168 SOUTH STREET, DORKING, SURREY, RH4 2ES
 UNIT 45 MARTLANDS INDUSTRIAL ESTATE, SMARTS HEATH LANE, MAYFORD, GU22 0RQ

J S Wilson

Mickleham

Carpentry & Building Services



Extensions ~ Conversions
 Refurbishments ~ Property Maintenance
 Fully guaranteed ~ Fully insured
One call WILL solve it all

Contact Jason on: 07761 926684 or 01372 379359
info@jasonswilson.co.uk



MEABY & Co

solicitors





Strength & wisdom in law & business since 1848

Meaby & Co Solicitors sits proudly in the heart of Dorking High Street providing expert legal advice to individuals and businesses throughout the town and its surrounding area. With additional offices throughout London, our experienced team, our 5* Google reviews and award winning service will ensure that all of your legal needs are supported on your doorstep.

Specialising in:

Residential & Commercial Property	Fraud & Private Crime	Reputation Protection
Wills, Trusts & Probate	LGBT Experts	Commercial & Corporate Law
Litigation and Mediation	Employment Law	Media & Entertainment
Crisis Management	Family & Divorce Law	Lease Extensions

Drop by our offices at 159 High Street, Dorking RH4 1AD or contact our switchboard on 01306 884432.
 Need advice elsewhere? We can assist. We have branch offices in Camberwell, Soho & Chigwell.

Switchboard: 01306 884432 www.meaby.co.uk  @MeabyandCo  meaby-&-co  MeabyandCo  meabyandco

