

# MICKLEHAM PARISH Magazine

A community magazine for Mickleham and Westhumble



A.N. Colwell 1984

March 2024





**SURREY HILLS  
HEATING LTD**

**DOMESTIC BOILER SERVICING  
AND BREAKDOWN**

**OIL, LPG & GAS BOILERS**

Call Dathan on: 07944 575970

sales@surreyhillsh heating.co.uk

www.surreyhillsh heating.co.uk



**Bullimores**



Accountants for Life

Tax • Accounts • Probate

Inheritance Tax &

Executorship

T: 01306 880880

E: partners@bullimores.co.uk

W: www.bullimores.co.uk

Bullimores LLP licensed to carry out the reserved legal activity  
of non-contentious probate in England & Wales by the ICAEW



**Stepping Stones**

**MORE THAN JUST A PUB**

CAFÉ-BAR

Serving Morning Coffee and Afternoon Teas

RESTAURANT & ALFRESCO DINING

Serving fresh classic-style pub favourites

Live music events Take-aways available

Available for functions / private parties / celebrations / family gatherings

Dog friendly

**Last Monday night of the  
month from 7.30 pm**

01306 889932

steppingstonespub@gmail.com

www.steppingstonesdorking.co.uk

*Please check website for up-to-date menus  
events and current opening times*



Sixth Generation Family Business

24-hour Service, Funeral Plans, Free Advice on all Related Matters,

Free Parking On Site, Memorial Masonry

Trellis House, 190 South Street, Dorking, Surrey, RH4 2ES

01306 882266

office@sherlockandsons.co.uk

www.sherlockandsons.co.uk



# MICKLEHAM PARISH Magazine

March  
2024

Mickleham  
Parish  
Magazine

A community magazine for  
Mickleham and Westhumble  
published under the auspices  
of Mickleham PCC with an  
independent editorial panel.

The magazine is published at the  
beginning of each month except  
January and August.

COPY DEADLINE

APRIL MAGAZINE

Sunday  
10<sup>th</sup> March

send to:

editor@micklehammag.co.uk

Co-editors

Charlotte Daruwalla

07933 300744

Jan Budleigh

07780 976301

Contributions in any form  
are welcome as are good  
quality photographs. There  
is no charge for advertising  
local charity and community  
events. However the editors  
reserve the right to shorten  
omit or reformat articles  
submitted for publication  
depending on space.



Printed by Holbrooks Printers  
Portsmouth

Mickleham Rectory

Lent and Easter

Hi everyone,

We are now at a lovely time of year with flowers, blossom and buds brightening up gardens and countryside. It is also great because Easter is approaching. We are of course now in Lent. How are you doing with the challenge to give up something and to focus more on God and on a compassionate response to need? I am writing this as I finish my last bar of chocolate until Easter so cannot yet report back on how I am doing! I am already looking forward to Easter eggs and I hope plenty of children will join the hunt for them in the Rectory garden after church on Easter Sunday.

Just a reminder of some key dates coming up with Lent lunches on 7<sup>th</sup>, 14<sup>th</sup>, 21<sup>st</sup> and 28<sup>th</sup> March and the opportunity to donate to charity, Mothering Sunday on 10<sup>th</sup> March, always a special service with contributions from children, posies for mums and thankfulness for those who have or continue to care for us. Palm Sunday is on 24<sup>th</sup> March, Holy Week services include Compline on Tuesday 26<sup>th</sup>, Maundy Thursday Holy Communion on 28<sup>th</sup> March, Good Friday Reflections on 29<sup>th</sup> March and Easter Sunday on 31<sup>st</sup> March (when the clocks go back). Lots to enjoy and ways to meet, express gratitude and contribute. See you soon?

Easter is arguably the most important Christian celebration with its message of the defeat of death, of new life, of forgiveness and hope for now and for ever. Unlike Christmas though the date is variable. This year it falls at the very end of March and in fact can be as early as 22<sup>nd</sup> March and as late as 25<sup>th</sup> April. This seems odd but there is a reason. The church in the West decided that Easter would be celebrated on the Sunday after the first full moon that falls on or after 21<sup>st</sup> March. The date of 21<sup>st</sup> March is the estimated annual date of the vernal equinox in the northern hemisphere (this year it will be on 20<sup>th</sup> March for most of the world). This again seems odd; the church is using astronomy to decide when to celebrate the resurrection of Jesus Christ. However the link is to the Jewish Passover, for the Gospel writers emphasise that Jesus' death and resurrection took place at the Jewish festival of Passover which was celebrated on the first full moon following the vernal equinox. In 325 CE, the Council of Nicaea established that Easter would be held on the first Sunday after that. The Orthodox church celebrates Easter on a different date due to their sticking with the Julian calendar, while we use the Gregorian. In fact, at Messy Church we can have fun thinking about Easter and doing crafts on Thursday 21<sup>st</sup> March so do come with your children from 3.15 pm in the village hall.

The date maybe variable but the Easter message of joy and hope remains the same. Jesus Christ died and rose again and is alive for ever. Death has been defeated and sin has been dealt with once and for all. The Easter greeting has echoed through the centuries. Why not join in? **Halleluia! Jesus is risen! He is risen indeed!**

God Bless

*Sandra*

The Rev'd Dr Sandra Faccini, Parish Priest

A reminder to keep free the date of our Village Summer Fair from 2 pm on Saturday 6<sup>th</sup> July. More details on page 2.


## St Michael's Church Services

10 am Sunday Services available on Zoom

Joining information for both Zoom and telephone users is available in Pews News Online each week. If you would like to join us by Zoom then contact Alison Wood for the codes or to ask her to include you on the emailing list for Pews News: [admin@micklehamchurch.org.uk](mailto:admin@micklehamchurch.org.uk) / phone 01372 376443. We hope as many of you as possible will be able to join us for worship.

Please refer to Pews News Online for the latest information. If you missed any of the services or would like to revisit them all are available on the church YouTube channel: <https://youtube.com/channel/UCI4pbewCT91iZhcd0EjJBIw>





### Bible Study

**Monday Evening Group**  
Contact Amanda Wadsworth  
[aewadsworth@hotmail.com](mailto:aewadsworth@hotmail.com)

**Thursday Morning Group**  
Contact Alison Wood  
01372 376443  
[alison.wood29@btinternet.com](mailto:alison.wood29@btinternet.com)

**ALL WELCOME TO EITHER GROUP**



# Tea@3

## No Tea@3 during Lent

Please get in touch with Julia if you are willing to help with future events  
[siberrman@btinternet.com](mailto:siberrman@btinternet.com)

ALL WELCOME TRANSPORT AVAILABLE



First Saturday of the month

**Coffee Morning**  
Westhumble Chapel

## Saturday 2<sup>nd</sup> March

Come along between 10 am and noon  
Everyone welcome  
Coffee and cake £2  
Free drinks for children  
For further information call  
Jonathan Blake 07787 126966



**Men's and Women's Saturday Breakfasts**  
at the  
Stepping Stones  
9 – 10 AM

*Social gatherings open to everyone*

### WOMEN'S BREAKFAST

3<sup>RD</sup> SATURDAY

NEXT BREAKFAST

**16<sup>TH</sup> MARCH**

Book with: Stephanie Randall  
[srandall55@gmail.com](mailto:srandall55@gmail.com)

### MEN'S BREAKFAST

4<sup>TH</sup> SATURDAY

NEXT BREAKFAST

**23<sup>RD</sup> MARCH**

Book with: Andy Diamond  
[diamo1@hotmail.co.uk](mailto:diamo1@hotmail.co.uk)



**VILLAGE SUMMER FAIR**  
**SATURDAY 6<sup>TH</sup> JULY**  
**2 PM RECTORY GARDEN**

FUN AND SOMETHING FOR EVERYONE:

STALLS LOCAL PRODUCE REFRESHMENTS CHILDRENS CORNER  
SHEREE VALENTINE PICTURE RAFFLES

PROGRAMMES £2 PER FAMILY

PROFITS WILL BE SPLIT BETWEEN THE NURSERY, SCHOOL,  
PLAYGROUND AND CLOCK APPEAL  
PUT THE DATE IN YOUR DIARY AND  
WATCH FOR MORE INFORMATION IN NEXT MONTH'S MAGAZINE.

## St Michael's Church Community Group Foodbank – who we are helping

We all know that the rising cost of the basics such as fuel and food has had an impact on us all, but it has had huge consequences on some causing hunger and desperation. Here are few examples known to the foodbank:

**Single mum:** The right support was not there when she was forced to close her business. She and her daughter had no other option but to turn to a food bank.

**Full-time carer:** Daughter has been a full-time carer for her dad since she was 25. When her dad's health

deteriorated, she had to quit her job to look after him. They were left with no income and had to visit a food bank for support.

**Disabled:** A young man had to leave a job he loved in event security after an injury that meant he would be unable to work again. He was forced to turn to a food bank for emergency support.

Whatever our position is, life can change so quickly: we may all need help. I never stop saying how proud I am of what our community does to support



local organisations such as the Foodbank and the Meeting Room and we have a lot to be proud of. So please continue your support and be that helping hand. Thank you.

Kelvin Pritchard, Chair of St Michael's Church Community Group

See page 26 for the items most needed for the foodbank and details where to deliver them.

## Spring Forward

As many of you will have read in previous editions of the parish magazine, we are hoping to automate the winding of the church clock. Thanks to generous donations from a number of individuals the total raised now stands at almost £2,500 but a further £7,500 is still needed. As the clocks go forward this month please consider whether you would like to be part of keeping this historic part of village life

running for future generations.

There will be a stall at this year's Summer Fair (see page 2) where more information will be available for those who would like to donate. A share of the profits from the fair will go towards this project.

For more information please contact Catherine on [churchwardens@micklehamchurch.org.uk](mailto:churchwardens@micklehamchurch.org.uk) or by calling 07790 473167.



Advance notice  
**The Annual Parochial Church Meeting**  
will be at 11.30 am on Sunday 21<sup>st</sup> April.



**ON THURSDAY 21<sup>st</sup> MARCH**

AT MICKLEHAM VILLAGE HALL  
Dell Close, Mickleham RH5 5EE

3.15pm until 4.45pm

Join us for family fun, games, songs and bible stories

For 3-10 year-olds (must be accompanied by an adult)

ST MICHAEL'S AND ALL ANGELS CHURCH

## Lent Lunches



### Home-made soup Weighty cheeseboard

Serving starts at 1 pm  
Mickleham Village Hall

Each Thursday in March  
7<sup>th</sup>, 14<sup>th</sup>, 21<sup>st</sup> and 28<sup>th</sup>

Please sign the attendance list at the rear of the church if you would like to come, or contact any of the Community Group team.



Superb professional  
cleaning of carpets  
oriental rugs  
upholstery curtains  
and leather

Guardsman  
anti-stain protection

- spot stain and odour removal
- leather cleaning specialists
- flame retarding
- dust mite reduction service
- all work fully insured & guaranteed

For a free no obligation quotation call today  
Freephone 0808 144 9071  
John Joannides 28 Bracken Close Bookham

**Safeclean**  
*The furnishing care specialists from GUARDSMAN*



## Pinehurst Rest Home

*We aim to provide an excellent service at competitive rates supporting emotional physical and social needs of our clients always respecting and protecting their status as adults*

- Residential and 24-hour daycare
- Excellent cuisine
- Facilities for disabled: medic bath / lift
- Home doctor in attendance
- Single & sharing rooms
- Convalescent & short stays
- Lounge with TV & piano
- Separate dining room
- Physiotherapist chiropodist & hairdresser
- Entertainment: theatre visits / parties & cabarets held on premises

National Trust Road Box Hill  
Mickleham Dorking Surrey RH5 6BY  
Telephone: 01306 889942 / 888253

*Dorking  
Decorators*  
PROFESSIONAL  
PAINTERS & DECORATORS

Established Local Family Business

- Over 20 years' experience
- Internal & External
- Commercial & Domestic
- Friendly, First Class Service
- Surrey / Sussex/ Greater London

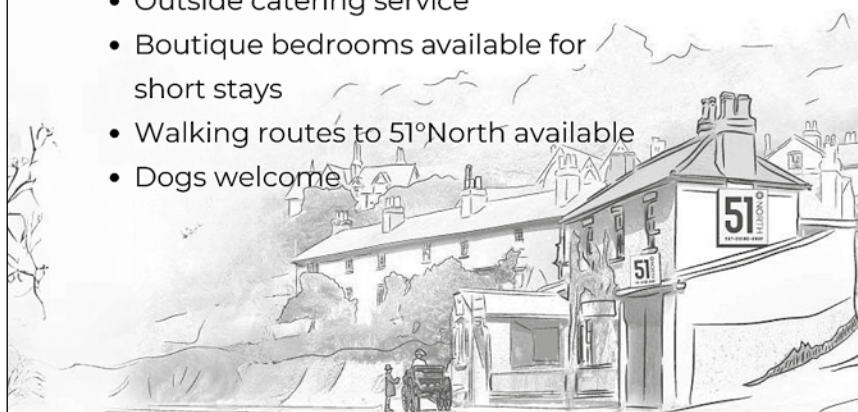
FREE ESTIMATES  
**01306 640418**  
[www.dorkingdecorators.co.uk](http://www.dorkingdecorators.co.uk)  
As approved by Checkatrade

**51**<sup>o</sup>NORTH

**SERVING DELICIOUS  
BREAKFAST, BRUNCH  
& LUNCH EVERYDAY**

### GOOD TO KNOW:

- Full alcohol licence
- Venue available for private hire
- Outside catering service
- Boutique bedrooms available for short stays
- Walking routes to 51°North available
- Dogs welcome



LONDON RD, MICKLEHAM, RH5 6EH  
FIFTYONE.DEGREESNORTH@YAHOO.COM | 01306 320455



**SIMON HOOPER**  
For all your decorating needs...

Professional, friendly and speedy service at all times

Fully insured	Insurance work
Exterior painting	Interior decorating
Free quotes & advice	Oil & Water-based products
Commercial/Domestic work	Wallpaper hanging & removal
07947 135 376	0208 3978 962
<a href="http://www.slhdecoratingservices.com">www.slhdecoratingservices.com</a>	

## Church Quiet Afternoon

Saturday 4<sup>th</sup> May 2024 1 pm to 4.45 pm

Lead by Rev'd Camilla White at The Dell Centre, St. Giles Church, Ashted

This event is open to all in our community. The Dell Centre is set in beautiful grounds which we are welcome to make use of. Just to be clear, this is not a discussion group, and no one will be asked for any input or put on the spot.

Traditionally, people have met God in silence. Jesus himself often took 'time out' to be with his Father. A Quiet Day offers us the chance to encounter God in a deeper way than is not often possible in the busyness of our everyday lives. There will be two talks by the Rev'd Camilla White who is leading our day and plenty of time for individual reflection and prayer. Camilla will also make suggestions as to how we might engage with silence and use our time.

She will be available should you wish to talk to her during the afternoon. If you have never been to a Quiet Day before this should be a gentle introduction.

- We will be encouraged to walk around the grounds and use the prayer room, so those that find keeping still and silent difficult will have a chance to walk and enjoy the surroundings.
  - There will be tea and cakes served during a break in the afternoon.
  - Parking is available and car shares can be arranged.
  - We hope that it will be a very relaxing day, away from the hustle and bustle of everyday life. In an oasis of quiet enabling us to reflect on Jesus and our faith.
- Numbers are limited so please contact

Amanda Wadsworth by email on [aewadsworth@hotmail.com](mailto:aewadsworth@hotmail.com) as soon as possible if you would like to come. The cost is £10 per person.

Here are some comments from attendees of our previous Quiet events: 'A great opportunity in a very peaceful and lovely place, to think beyond the immediate and the day-to-day'.

'A wonderful time, in a calm environment, gently challenged by a spiritual leader, to reflect on my faith'.

'I left feeling relaxed and refreshed in body and mind as if I had been on holiday for the afternoon!'

'An interesting time together in a peaceful setting. The gardens are delightful'.

## Easter Lilies



Mentioned many times in the Bible, the white lily symbolises purity, rebirth, new beginnings and hope and is most often associated with the resurrection of Jesus. This Easter the church will once again be decorated with lilies given in memory of loved ones. If you would like to make a donation towards the cost of a lily and have the name of someone special read out during the service then please contact Catherine on [mickleham@diffey.me.uk](mailto:mickleham@diffey.me.uk) by Friday 22<sup>nd</sup> March.

## CAN YOU OFFER A MARQUEE A HOME?

Our community is very fortunate to own a marquee, originally donated by the manufacturer for the Village Party. It has subsequently been used for a number of community events, most recently our late Queen's anniversary celebrations.

The marquee has happily lived with a family who are now moving and so can no longer house it.

Have you got space in your garage, shed or barn to care for such an important asset for events in the community?

If so please contact David Ireland  
Tel 07850 002185

## Tea and Cake at St Michael's Church

**One Sunday afternoon  
a month starting  
28<sup>th</sup> April  
3pm-5pm**





# Mickleham and Westhumble Local History Group

## Social History of Mickleham Village Hall over the Decades

### Part 2 1930s to 1960

*Angela Ireland has researched and written a comprehensive social history of Mickleham Village Hall. In March 2022 we included the section 1901 to the 1920s, ending with the words 'to be continued'. Since then we have not managed to find space to continue, but at last here is the next section.*

By 1930 donations were requested for new village hall heating: more jumble sales! Happily in April of that year new heating was installed thanks to generous donations from Mr Cullen of Mickleham Downs House and Mr Whiteley of Glenrose. The cost was given as £169 5s 6d. Over the years the names of various residents who have contributed enormously to our village appear, including that of Captain Widenham Fosbery who was appointed a trustee in 1925, following the death of Mr Grissell, and who continued until his death in 1937. He had been nominated by his wife (the daughter of David Evans) who was one of the original trustees. Another very active member of the community, Mr Gordon Pollock, served as treasurer until his death in 1929 and was succeeded by Captain Widenham Fosbery, his position as trustee being filled by Mr G H Lloyd Jacob. Mrs Helen Gordon Clark resigned as trustee in 1929, as she was no longer resident in the village. Mr and Mrs Pack, the sexton and pew opener from the church acted as caretakers until they resigned in July 1923 after more than three decades.

By 1926 the early form of 'Health and Safety' had reared its ugly head and dramatic productions were forbidden in the hall due to new fire regulations – leading to more jumble sales! Magic Lantern lectures continued into the 1930s and dances are mentioned. Once again in 1933 donations are requested in order to complete works on the hall, needed to obtain a licence from Surrey County Council (SCC). In March 1933 there is a plea from the Rector for £40 needed to fund the renovations necessary to obtain a licence. As a precursor to our current Village Hall Committee the various clubs which used the hall were considering supporting the appeal and the first 10 shillings donation was received from a 'working man'. In April of that year the decision was taken to appoint a committee

representing all the organisations using the hall which would be responsible for the running expenses. A certain Claud Weston had drawn up professional plans for the renovations needed but had refused payment. In May a new system of charges for use of the hall was introduced but more money was still needed so discussions were held as to a new charging structure. A flat fee was suggested but was decreed to be too expensive for some organisations and would not in any event raise enough money. The decision was taken to continue with a system based on an estimate of costs and aiming to 'place the burden on the shoulders which can best bear them'. The new committee was formed, creating the system which endured until 2012 of a management committee in addition to the four trustees, although at that time the rector was also an additional trustee. (Originally the hall trustees held the title deeds to the property, but in 2012 these were transferred to the Charity Commission which became the hall's Custodial Trustees. The rules were changed so that all members of the management became the hall's Managing Trustees.)

To what must have been the great relief of all, the alterations were completed by September 1933 and the licence granted. However, their troubles were not yet over. In October faults were found with the electrical wiring and more work was needed. £70 - £80 was needed for the repairs required in order to gain approval by SCC and it was not felt appropriate to ask the village for contributions once more, so an appeal was made to wealthy donors. Fortunately they 'came up trumps' as they still do from time to time and Mr Leonard Cunliffe gave £25 while an anonymous donor gave £70.

By 1934 all should have been plain sailing but hall users were still complaining that charges were too high. A meeting was called in order to explain the liabilities to representatives of all the societies using the hall so that charges could be fixed to the satisfaction of all concerned. It is not known whether this led to a reduction in complaints or, if so, for how long! However in 1935 it is reported that the first year of the new committee has been successful and there was a small balance in hand.

Members of the committee were Miss Lawrence of Burford Lodge, Mr Piper, Headmaster of the school and Mr Housden, Mr Batchelor and Mr Abbott, from the village. The Silver Jubilee of the reign of George V provided an opportunity to set up an endowment fund in commemoration of the event. In July £50 was duly invested in the fund in the hope of reducing hire costs. In 1936 it was reported that the committee had had a successful year but some users still complained about the hire charges – seemingly an intractable problem.

However, to add to their responsibilities the Village Hall Committee had briefly taken over the running of the Children's Recreation Ground in 1934. Apparently the Village Hall Committee felt it necessary to ask the residents of Dell Close Cottages not to enter or leave their properties via the Recreation Ground. It is not immediately obvious why this was felt to be necessary or how long the 'ban' lasted.

Information is scarce during the war years but we do know that dark brown wooden shutters were installed by Mr Batchelor in 1940 as a black out. These remained until the hall was redecorated in 1970. There is mention of pupils from three schools in outer London having been evacuated to Mickleham and taught in the hall during WW2. These pupils were addressed by RB Bennett, ex-Prime Minister of Canada in 1940. Immediately after the war in 1947 SCC built a new kitchen on the side and hired the hall for school lunches. This continued until the end of 1981, at which time a shortfall in income was created. At that time they identified the need for the pit at the back of the hall to be filled in as the rubbish such as fridges, washing machines, vans etc provided a health hazard so near to the kitchen area. Rather surprisingly this does not appear to have been done until 1976.

During the 1950s the Mickleham and Westhumble Arts Theatre Club, chaired by the Rector's wife, Margaret Cornell was a frequent user of the hall and staged many productions which must have been enjoyed by all residents. The hire charge for the club was the subject of many a committee meeting and was fixed at £25 p.a. in 1959.

*To be continued*

## A very, very long road to the Village Hall



*This article illustrates one of the more unusual of the wide variety of activities which take place at Mickleham village hall. Readers may have noted night-time runners around the area and wondered what was going on. We thought it would be worth asking the organisers of Canary Runs to explain their activities and how they came to use the hall. Allan Rumbles writes:*

I have loved running for a lot of my adult life and for the last 17 years, I have run a marathon in the 'gap', that non-specific time between Christmas and New Year. Setting aside a day to have a run gave me a bit of focus and took me round some of the fantastic trails that Surrey has to offer.

I was running plenty of other events during the year and met some fantastic friends along the way. Ten years ago, one of my friends Mark Thornberry asked what I was doing at Christmas. I told him that we were having my in-laws down for the festive period, but I would be taking myself off for my usual marathon run on one of the days. He said it sounded fun and asked if he could join me; the more the merrier I said. So that year just three of us, Mark, Natasha Gayle and I ran 26 miles from Reigate Hill over the North Downs and had terrific fun. Such a good time, the three of us did it again the following year. In fact, we had so much fun the following year that we decided to ask if anyone else wanted to join us to run a marathon in 'The Gap' in 2017.

That was when the very first 1<sup>st</sup> Annual Headtorchruns Marathon was born: a low-key affair from Wray Lane carpark on the 27<sup>th</sup> December in 2017. Just as a bit of fun and as we were members of



the Wednesday Night Headtorch runs group, we thought we would run it at night and asked everybody who wanted to run along with us to bring a canary with them. This is just as a hat-tip to the miners who used headtorches as part of their daily life. The caveat was anyone who did not bring one paid a 'fine' to charity. It was earlier that year that Mark had found out that he had terminal liver cancer so anyone who did not carry a canary, was asked to donate their fine towards a cancer charity. The weather was amazing at the start of the run, and we had visions of a great party in the carpark afterwards. This was not to be as the conditions quickly deteriorated when a big storm came in and everybody made their way back home as soon as the marathon was finished.

We realised that we would need an indoor base if we were going to do this again and with an email to Mary Banfield and Deanna Darnell we began our fantastic partnership with Mickleham village hall. The second 1<sup>st</sup> Annual Headtorchruns Marathon in 2018 was a slightly larger affair with more runners, more canaries and a party for the runners on their return to the hall after 7½ hours running over the Surrey Hills at night. We were actively raising money for Liver Cancer Research at Kings College Hospital as that was where Mark was having continuous treatment for his cancer. We personally financed that event as the run was free to the runners but we actually spent more than we raised that night, so we

had a rethink and in 2019, Canary Trail Events (CTE) was established.

We have gone from strength to strength and each year put on several races and navigation courses based at the village hall. At the Copthorne Races 2023, we held the first British-Polish Trail running championship and we even had a documentary team from Channel 4 filming two of our runners Eros and Sarah, a blind runner and his guide as they tackled the 50 km race aiming for a finish on their third attempt at the race.

We are hoping for a private screening and a Q&A with the runners and the director at the hall as soon as possible as it would provide an opportunity for the runners and the local community to come together, enjoy the film, and have a discussion with everyone over a cuppa.

The involvement of Mary, Deanna, and the support of the local community in Mickleham has been absolutely instrumental in the success and growth of our events. Their contributions go beyond just providing a space for the races, it has helped foster a sense of community and belonging to the CTE family that is invaluable. Their contributions are truly appreciated and integral to the continued success of our events and charity fundraising efforts.

Mark Thornberry sadly passed away in June 2020, but we continue to focus on our fundraising efforts and along with others have helped to build steadily the amount raised for Liver Cancer Research to over £160,000 so far.

## Seasonal Sightings

Not a sighting this month, but a soundscape. The first lawn mower of 2024 was heard on the final weekend of January.



## Bliss Chimney Sweeps

All appliances swept

Traditional brush & rod Power sweeping

Pots & cowls fitted

Repointing, lead work & roof repairs

Fully insured Certificates issued

Free friendly advice

07739 638431

Blisschimneys@gmail.com

We provide the best possible care for your feet

We've moved

Book your appointment:  
01372 454583 bookhampodiatry@gmail.com



**Bookham**  
**Chiropody & Podiatry Clinic**  
Diagnosis, Expert Treatment & Professional Care  
for Your Feet

**3 Hazel Parade, Penrose Road**  
**Fetcham KT22 9PY**  
[www.bookhampodiatry.co.uk](http://www.bookhampodiatry.co.uk)

Your visiting

PHYSIOTHERAPIST

**SUE JUDD** MCSP HCPC

40 years of experience.

All your requirements for elderly  
mobilisation & post-operative  
rehabilitation.

07834 227 999 sue-judd@sky.com



**EDE BROS**

REMOVALS · STORAGE · SHIPPING ·

- Since 1926, Capel-based and family owned
- STRESS-FREE, local, national & worldwide
- Contact us for your **FREE** estimate...

**01306 711293**  
[edebros.co.uk](http://edebros.co.uk)

EDE BROS

REMOVALS · STORAGE · SHIPPING ·  
Dorking, Surrey, England  
01306 711293  
[www.edebros.co.uk](http://www.edebros.co.uk)

EDE BROS

REMOVALS · STORAGE · SHIPPING ·  
Dorking, Surrey, England  
01306 711293  
[www.edebros.co.uk](http://www.edebros.co.uk)

EDE BROS

REMOVALS · STORAGE · SHIPPING ·  
Dorking, Surrey, England  
01306 711293  
[www.edebros.co.uk](http://www.edebros.co.uk)

**Home Counties Carers**

HELPING PEOPLE AT HOME

**Live in Care**

We are a close-knit family-run home care business  
that is committed to providing friendly and reliable  
carers, who genuinely care.

- Friendly, vetted trained and proven team
- 24/7 office support throughout the care package
- Experienced in caring for those with dementia

For more information and to arrange an assessment call us on

01483 224985 • 01737 354821

[www.homecountiescarers.co.uk](http://www.homecountiescarers.co.uk)



**P J Oliver & Son**

Window cleaning

House & Garden Maintenance

Roof Repairs, Guttering

Painting & Decorating

Ground works, fencing, hedge cutting,  
and tree work

Also Pest control

Call Phil on 07722 158 111

Email [Oliviagarrett79@gmail.com](mailto:Oliviagarrett79@gmail.com)



**YOUR LOCAL FARM SHOP**  
**ON DENBIES WINE ESTATE**

**farm shop deli plant centre**

Open daily 9.30 to 5 pm and Sundays 10 am to 5 pm

**Local produce, Seasonal Food, Plants and Flowers**  
**Plants and Flowers for Mothering Sunday and Easter**

We deliver veg bags and more to the local area on Tuesdays and Fridays  
see [www.vgfarmshop.com](http://www.vgfarmshop.com) or email [vegbag@vgfarmshop.com](mailto:vegbag@vgfarmshop.com) for details

**LOCAL • NATURAL • ETHICAL** 01306 880720 [www.vgfarmshop.com](http://www.vgfarmshop.com)

## #Ukraine Humanitarian Aid Appeal Update

The Appeal for Humanitarian support for Ukrainian front-line troops continues. We still retain a direct delivery route to troops fighting in the Mykolaiv/Kherson region, courtesy of Eduard's parents, who complete the significant final leg to the soldiers led by Dmytro, who is personally known to Eduard and his parents. The range of materials sent through remains similar to the original list: combat clothing and protective gear, and with daytime temperatures below zero much of the time the emphasis is on warm underclothing and winter gear.

Three shipments have been received and the fourth is, at the time of writing, on its way. The total value of humanitarian aid sent to the frontline is around £7,000 to date, and has been received in Ukraine, see the photos. The troops are very grateful and send their thanks, as previously published in this magazine. Various areas of the world are in very precarious positions and have equivalent needs for political and humanitarian aid, but there will be continuing requests to support the front-line troops in Ukraine, so any further donations would be gratefully



The troops unpack the humanitarian aid

received. The payment details are:

A/c name: Timothy Mathieson Sort  
code: 04-29-09 A/c no.: 39912167

Please keep in mind the the Ukrainian situation in respect of its European – and indeed global – implications.

## Surrey Hills International Music Festival 2024

Tickets are now on sale for our 2024 season with a wealth of fantastic music. Superb chamber music, fascinating talks, incredible pianism and a finale of magnificent Baroque arias, we are looking forward to bringing a huge variety of amazing music to the Surrey Hills between 7<sup>th</sup> and 18<sup>th</sup> May.

Join us on a guided walk to take in some of our glorious local countryside ahead of a lunchtime talk with music on Tuesday 7<sup>th</sup> May at West Horsley Place or a lunchtime concert on Monday 13<sup>th</sup> May in Betchworth. Or enjoy a full evening performance in one of our beautiful venues: Holy Trinity Church in Guildford, the stunning Hilltop building at RHS Garden Wisley and the intimate and atmospheric Menuhin Hall in Cobham.

Some inspirational world-class musicians will perform for you including Dame Sarah Connolly who will bring a very special programme of Bach and Handel arias with leading early music ensemble, the English Concert (Saturday 18<sup>th</sup> May); the gorgeous Mendelssohn Octet performed by international chamber players (Saturday 11<sup>th</sup> May); Sharon Kam and the award-winning Sitkovetsky Trio with the Mozart Clarinet Quintet (Thursday 9<sup>th</sup> May) plus a spectacular concert for two pianos including our Artistic Director Wu Qian and featuring the winning entry in the 2024 Young Composer competition (Thursday 16<sup>th</sup> May).

To view all details in our online brochure and book your tickets, visit our website [tickets.shimf.co.uk](http://tickets.shimf.co.uk)

**Westhumble Residents Association AGM**  
**7 pm 17<sup>th</sup> April**  
**The Stepping Stones**

Residents will have a chance to hear the parliamentary candidates outline their manifesto from 7 pm. The AGM will start at 7.30 pm for those who do not wish to attend the candidates briefing.





On leaving an event at Juniper Hall I happened to look closely at the base of one of the supports of the cast iron portico. I am interested in old iron work (think manhole covers!) and its makers. I took photos of the heavily over-painted lettering at the base of the support.

Looking closely at the photos, the only word I could make out was 'Every'. That rang a bell. Sometime previously I had noticed a drain cover on Chapel Lane, outside the Bat Cave near Ranmore Common Road. It bore the word 'ESE Phoenix Lewes'. It was sinking into the tarmac and sadly it has since been replaced by a nameless modern one.

A little research on the internet revealed that ESE stood for East Sussex Engineering, in Lewes, which was originally John Every & Co. The firm was in business from 1832 and run by four generations of the Every family. It was sold 1951 when it became ESE and finally closed in 1978.

In 1859 John Every, number two, set up a branch in Brighton with a Mr Newman. Looking again at the Juniper Hall photos it was possible to decipher '& Newman'



Top left: the Juniper Hall portico; above: the Ashcombe Road lamp post; top right: one of the canopy supports at Westhumble station; Cricket pavilion at Sheffield Park

after Every. Thus the portico must have been built later than 1859.

Shortly after that I was on Westhumble Station and at the base of the canopy supports on the Dorking platform I chanced upon the words 'Every Lewes'.

Later, at the top of Ashcombe Road in Dorking, I spotted an old lamp post which had the inscription 'John Every (Ironfounders) Ltd. Lewes & London'. The elderly owner told me he had worked for the Electricity Board, had seen it lying in the depot in Bookham, and installed it in his garden.

There is much information about Every & Co on the internet. One of their more ornate productions was a cricket



pavilion, commissioned in the 1880s by the Earl of Sheffield for the ground at Sheffield Park in Sussex. Much of the ornate ironwork along the sea front in Brighton came from the same foundry.

Juniper Hall's portico is a more modest endeavour. What other Every relics remain to be discovered in the Mickleham and Westhumble area?

Barbara Jones

## Juniper Hall Portico

## Neil Ferris appointed as new Conductor of the Leith Hill Music Festival

Leith Hill Music Festival (HMF) Conductor for the past eight years, Jonathan Willcocks will be passing on the baton after the April 2024 annual Festival. The next Leith Hill Music Festival Conductor is Neil Ferris. Neil is currently Chorus Director of the BBC Symphony Chorus and Co-Artistic Director and Conductor of Sonoro. He joins a line of distinguished musicians stretching back to Ralph Vaughan Williams at the founding of the festival in 1905.

Neil says, "I am passionate about the wonderful and varied choral scene that we are so fortunate to have in the UK. To be offered the chance to be the conductor of the Leith Hill Music Festival and its celebration of community singing is an opportunity that I will grasp with both hands and with great excitement. Some of my formative musical experiences as a teenager revolved around the music

of Ralph Vaughan Williams, and the responsibility of being a custodian of his music festival I shall relish and carry out with love and care. I am so fortunate to inherit a festival in rude health and I give heartfelt thanks to Jonathan Willcocks for his inspiration and dedication that has set me a great example to follow."



### 2024 Concerts

Sunday 10<sup>th</sup> March

- Bach St Matthew Passion

Friday 12<sup>th</sup> April

- Mozart Requiem
- Vaughan Williams *Serenade to Music* (Mickleham Choral Society)

- Saturday, 13<sup>th</sup> April

Puccini *Messa di Gloria*

Lauridsen *Lux aeterna*

All concerts at Dorking Halls starting at 7.30 pm

Box Office: 01306 881717 [box.office@molevalley.gov.uk](mailto:box.office@molevalley.gov.uk)

### Strong Carrier Bags



Please remember to save any unwanted strong carrier bags of any size. They are used for transporting Foodbank items and for delivering the magazine. Drop off addresses are those in the Foodbank advert on page 26.

## Parish Magazine Annual Report 2023

2023 has been the first year after Sue Tatham's retirement as editor of the Mickleham Parish magazine. The co-editors are enjoying working together. They appreciate the support of a fantastic team, all volunteers, including a range of contributors who produce articles, the editorial panel who all contribute to discussions about the content of each magazine, the proofreader, the advertisement manager and the treasurer. Then there is another whole team of people involved in distributing magazines to individual houses. Members of this team are vital in getting magazines through letter boxes. Sue and Ben Tatham are still closely involved, acting as mentors and final proofreaders. The co-editors value all the members of this wide team. Opposite is a list of all who are involved each month in the production and delivery of the magazine. Our regular contributors

are listed on page 17. It is truly a team effort; many thanks to all of you.

We also value our printer, Holbrooks of Portsmouth, (not volunteers, of course). Unlike any of our previous printers, they proofread the magazine as soon as we send it to them. They come back to us very quickly with queries about various issues, mostly technical and software-related, or the rare typo which has been missed in spite of the number of pairs of eyes involved in the checking process. Thus we hope it is rare that readers spot any typos not picked up in the process. Printing costs, mainly the cost of paper, rose in 2023 but have remained steady for 2024. We also value all the advertisers who use the magazine to attract business. We held our advertising charges for 2023 to help businesses through the period of the high rate of inflation. We have made a modest increase for 2024 to avoid having a big jump if we leave a longer gap. Almost all of our advertisers have

stayed with us through this. Some have been with the magazine for many years.

The most trying part of the year has been getting members of the team signed up as signatories for the bank account and online banking. It was a convoluted process, probably made worse by the need to prevent fraud but we have recently succeeded.

Finally, we value our readers and hope they find the content interesting and stimulating. If you have any ideas for articles do let us know. The email address [editor@micklehammag.co.uk](mailto:editor@micklehammag.co.uk) reaches both co-editors so you do not need to worry about who is in charge for any particular month.

Jan and Charlotte

*There is always a danger in listing names that some have inadvertently been omitted. If yours has been, apologies. Please let us know and it will be corrected next month.*

## The Parish Magazine Teams

The Mickleham Parish Magazine teams

### Editorial and advertising:

Sue Tatham Editor emerita and archivist  
Charlotte Daruwalla Co-editor  
Jan Budleigh Co-editor  
Stephanie Randall Proofreader  
Sarah Penry Advertising manager  
Duncan Irvine Treasurer  
Frances Presley Panel member  
Barbara Jones Panel member  
Angela Ireland Panel member  
Ben Tatham Panel member

Karen Beck Panel member  
Sandra Faccini Parish priest

### Delivery Team:

Judith Cobby  
Mary Venning  
David Kennington  
Frances Presley  
Ben Tatham  
Sue and Graham Crowthorn

### Individual delivery people:

John Winn Angela Ireland  
Annie Dennis Sarah Penry

Mary Dennis David Ottridge  
Maddie Jones Ann Sankey  
Gill Wilson Val Selwood Simon Taylor  
Alison Wood Liz Meikle Mike Weller  
Paul Willis Paul Beck  
Phyllida Neal Ruston Daruwalla  
Wendy Tickner Stephanie Randall  
Gail James Anne Weaver  
Graham Manning Chris Budleigh  
Elizabeth Moughton Tony Butler  
Charmain and David Murley  
plus The Running Horses and Box Hill School



## A Confidential & Safe Space to Talk

Counselling • Mind & Body Healing  
Reiki • Relax into Nature Sessions

Face to face/Online/Outdoors/Distance

Supporting you with compassion and  
understanding through challenging times



Call Judith Cobby  
on 01306 882229  
or 07790 614448

[www.healing-inspiration.co.uk](http://www.healing-inspiration.co.uk)

Rowlatt Garden Services

**RGS**  
EST.1985

*Gardens large and small  
we maintain them all*

All aspects of private and commercial garden  
and estate maintenance landscaping undertaken  
Fencing grass & hedge cutting

Telephone: 01737 841524 Mobile: 07887 838666  
References available upon request

## Watercolour Paintings



Capture treasured memories with pet portraits  
and family & wedding illustrations  
Each one is sketched from a favourite photograph  
Prices from £20

philippahutter philippa@hutter.co.uk



## KING WILLIAM IV

Dear Friends & Neighbours,

We are excited to be moving into spring, and hopefully some drier, warmer weather.

We have some lovely news. Federica, who many of you know as she worked our weekday lunch shifts for many, many years, had a baby boy called Ettore. He is absolutely gorgeous. Federica unfortunately had a bit of a hard time as an older mum, but is now on the mend thank goodness.

Because of this, we now have a rare vacancy for a waiter/ress for these weekday lunchtime shifts Wednesday to Friday, and this can be a term-time only job if required, so perfect for working parents. We can flex the hours around school drop off & pick up times as needed. So spread the word and if you know anyone who might be interested, they can email me or Kat [thekingwilliamiv@gmail.com](mailto:thekingwilliamiv@gmail.com)

Hope to see you soon Eamonn & Anne

Byttom Hill Mickleham 01372 372590 [www.thekingwilliamiv.com](http://www.thekingwilliamiv.com)

## TIM LANGLEY

*Experienced craftsman*

ANTIQUE RESTORATION  
CABINET MAKING  
FRENCH POLISHING

Free estimates collection & delivery  
01372 457700 07960 486455  
[tmlangley@virginmedia.com](mailto:tmlangley@virginmedia.com)

## TONY WINCH

CARPENTER, JOINER  
& CABINET MAKER

[www.tonywinch.com](http://www.tonywinch.com)

01306 742373  
07969 016 924

## FRESH LOCAL PRODUCE

Market Stall

Fridays: St Martin's Walk Square Saturdays: Dorking High Street

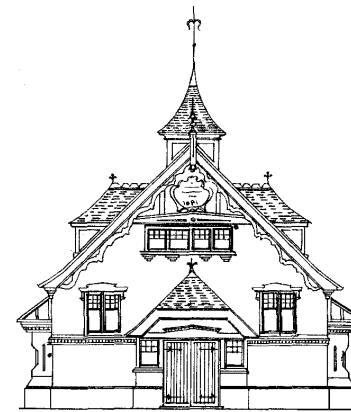
Veg Boxes

Delivered to your door at affordable prices  
Weekly or one-off deliveries on Thursdays  
Order online or by phone

A wide range of products, not just veg  
Working with 30 local producers

**FoodFloat**

Phone: Maddie 07790 613348 [FoodFloat.sales@gmail.com](mailto:FoodFloat.sales@gmail.com)  
website/online shop: [www.FoodFloat.org](http://www.FoodFloat.org)  
A Community Interest Not-for-Profit Company



## Mickleham Village Hall available for hire

Hall bookings  
Table & chair hire

Deanna Darnell

07790 941 601

[bookings@micklehamvh.co.uk](mailto:bookings@micklehamvh.co.uk)

[www.micklehamvillagehall.org.uk](http://www.micklehamvillagehall.org.uk)



Planning  
a party?

Equipment  
available for hire

China ~ Cutlery

Electric urn

Equipment hire

Mary Banfield

01372 373912

[admin@micklehamvh.co.uk](mailto:admin@micklehamvh.co.uk)

## Community Directory

BOX HILL AND HEADLEY HEATH (National Trust) 01306 888793  
Lead Ranger – Meredith Westall (Merry) [meredith.westall@nationaltrust.org.uk](mailto:meredith.westall@nationaltrust.org.uk)  
07811 088097

Friends of Box Hill – Chair Lyn Richards 01737 842889  
[lyn@mra.uk.net](mailto:lyn@mra.uk.net)

BOX HILL SCHOOL 01372 374814  
Acting Headmistress – Hayley Robinson  
[Reception@boxhillschool.com](mailto:Reception@boxhillschool.com)

DORKING CRICKET CLUB  
Chairman – Andrew Homewood [homewooda@hotmail.co.uk](mailto:homewooda@hotmail.co.uk)

DORKING GROUP OF ARTISTS  
Exhibition Secretary – Patricia Booth [patriciabooth100@gmail.com](mailto:patriciabooth100@gmail.com)

DORKING LAWN TENNIS & SQUASH CLUB  
Maddy Halliwell [madeline\\_halliwell@hotmail.co.uk](mailto:madeline_halliwell@hotmail.co.uk)

DORKING RUGBY CLUB 07789 176417  
Jim Evans [jim@flintcottage.net](mailto:jim@flintcottage.net)

THE GARDEN SHED 07759 646353  
Pauline Davis [paulinedavis33@icloud.com](mailto:paulinedavis33@icloud.com)

JUNIPER HALL FIELD CENTRE 01306 734501  
[enquiries.jh@field-studies-council.org](mailto:enquiries.jh@field-studies-council.org)

Head of Centre – Maddy Jones [m.jones@field-studies-council.org](mailto:m.jones@field-studies-council.org)  
Friends of Juniper Hall – Suzy Hughes 01483 281935  
[suzy@suzyhughes.co.uk](mailto:suzy@suzyhughes.co.uk)

MICKLEHAM CHILDREN'S PLAYGROUND ASSOCIATION 07767 891772  
Secretary – Sarah Parfitt [sarah@sarahparfitt.com](mailto:sarah@sarahparfitt.com)

MICKLEHAM CHORAL SOCIETY [www.micklehamchoral.org.uk](http://www.micklehamchoral.org.uk)  
THURSDAYS 8 - 10 pm – MICKLEHAM VILLAGE HALL  
Conductor – Juliet Hornby 01372 373106  
Secretary – Mike Benson [secretary@micklehamchoral.org.uk](mailto:secretary@micklehamchoral.org.uk)

MICKLEHAM OLD BOX HILLIANS FOOTBALL CLUB 01372 374745  
Secretary – John Atewell

MICKLEHAM PARISH COUNCIL [www.micklehampc.org.uk](http://www.micklehampc.org.uk)  
SEE WEBSITE FOR MEETING DATES 01372 379381  
Chairman – Rev'd David Ireland [rev.ireland43@btinternet.com](mailto:rev.ireland43@btinternet.com)  
[clerkatmpc@gmail.com](mailto:clerkatmpc@gmail.com)

Parish Clerk – Feena Graham

MICKLEHAM PARISH MAGAZINE 07933 300744  
Co-Editor – Charlotte Daruwalla [editor@micklehammag.co.uk](mailto:editor@micklehammag.co.uk)

Co-Editor – Jan Budleigh 07780 976301  
[editor@micklehammag.co.uk](mailto:editor@micklehammag.co.uk)

MICKLEHAM VILLAGE HALL 01306 882547  
Chairman – Ben Tatham [chairman@micklehamvh.co.uk](mailto:chairman@micklehamvh.co.uk)

Bookings Manager – Deanna Darnell 07790 941601  
[bookings@micklehamvh.co.uk](mailto:bookings@micklehamvh.co.uk)



## ST MICHAEL'S CHURCH

*within the United Benefice  
of Leatherhead and Mickleham*

INCUMBENT — The Rev'd Will Perry 01372 372313

### PARISH PRIEST

The Rev'd Dr Sandra Faccini \* 01372 417664  
07763 488961

parishpriest@micklehamchurch.org.uk

\* Main working days: Monday, Tuesday and Sunday

### CHURCHWARDENS

Timothy Mathieson 07555 597163

TimothyMathieson@aol.com

Catherine Diffey 07790 473167

Mickleham@diffey.me.uk

### PARISH ADMINISTRATOR

Alison Wood 01372 376443

admin@micklehamchurch.org.uk

### PCC SECRETARY

Caroline Jones 07504 271376

pccsecretary@micklehamchurch.org.uk

### TREASURER

Richard Siberry 01372 375303

pcctreasurer@micklehamchurch.org.uk

### ORGANIST

David Fishwick 0208 7732420

davidfishwick1@btinternet.com

### WEDDINGS CO-ORDINATOR

Elaine Machin 01372 724972

weddings@micklehamchurch.org.uk

### BAPTISMS CO-ORDINATOR

Vickie Leney 01306 884054

baptisms@micklehamchurch.org.uk

### FUNERALS CO-ORDINATOR

Carole Brough Fuller 01737 842918

funerals@micklehamchurch.org.uk

### WEBSITE MANAGER

Kelvin Pritchard 07770 280410

website@micklehamchurch.org.uk

### PCC ECO GROUP

David Kennington 01372 362309

davidkennington144@gmail.com

**www.micklehamchurch.org.uk**

*For information about services for other  
denominations see website pages.*

*Search on 'Churches Together Mole Valley'*



## CALENDAR MARCH

2	Saturday	10 am to noon	Coffee morning at Westhumble Chapel p2
3	<b>Third SUNDAY of Lent</b>	10 am	Morning Worship
4	Monday	7.45 - 9 pm	Monday Lent Course
5	Tuesday	7 pm	Compline in church
7	Thursday	11 am - 12.30 pm 12.30 pm	Thursday Lent Course Lent Lunch village hall p3
10	<b>MOTHERING SUNDAY</b>	10.15 am 11 am 6 pm	Craft workshop in church p25 All-Age Mothering Sunday service <i>Note later time</i> <i>No Morning Prayer at Westhumble Chapel</i> Sundays at Six Thomas Elwin Voice Recital
<i>Copy deadline for</i>			<i>April parish magazine</i>
11	Monday	7.45 - 9 pm	Monday Lent Course
14	Thursday	11 am - 12.30 pm 11.30 am	Thursday Lent Course Friends of Juniper Hall talk at Juniper hall followed by lunch (see February issue page 23)
16	Saturday	12.30 pm 9 - 10 am	Lent Lunch village hall p3 Women's breakfast at the Stepping Stones p2 Garden Shed Willow Workshop (fully booked)
17	<b>Fifth SUNDAY of Lent</b>	8 am 10 am	CW Holy Communion Holy Communion
18	Monday	7.45 - 9 pm	Monday Lent Course
19	Tuesday	7 pm	Compline in church
21	Thursday	11 am - 12.30 pm 12.30 pm	Thursday Lent Course Lent Lunch village hall p3
23	Saturday	3.15 - 4.45 pm 9 - 10 am	Messy Church p3 Men's breakfast at the Stepping Stones p2
24	<b>PALM SUNDAY (Holy Week)</b>	8 am 10 am	BCP Holy Communion at Westhumble Chapel Holy Communion
28	<b>Maundy Thursday</b>	12.30 pm 7.30pm	Lent Lunch village hall p3 Holy Communion
29	<b>Good Friday</b>	2 pm	Service of Reflection in Church
31	<b>EASTER SUNDAY</b>	10 am	Family Holy Communion for Easter Day followed by an Easter Egg hunt

### Dates for

Saturday 4<sup>th</sup> May  
Thursday 6<sup>th</sup> June  
Saturday 6<sup>th</sup> July  
Saturday 13<sup>th</sup> July

### your diary

Quiet Day St Giles, Ashtead  
Evening talk at Juniper Hall p23  
Village Summer Fair  
M&WHS Village Show



## MEMBERS OF THE PAROCHIAL CHURCH COUNCIL

Sarah Blake	Elaine Machin
Mark Day	Tim Mathieson
Andy Diamond	Beverley Mehta
Catherine Diffey	Kelvin Pritchard
Caroline Jones	Richard Siberry
Vickie Leney	

## ST MICHAEL'S CHURCH COMMUNITY GROUP COMMITTEE

Mark Day	07852 117249
	mickleham@hotmail.com
Denise Darling	denisedarling4@btinternet.com
	07780 673372
Andy Diamond	07789 775354
	diamo1@hotmail.co.uk
Kelvin Pritchard	07770 280410
	Kelvin@wan2lan.com

## ST MICHAEL'S CHURCH COMMUNITY GROUP HELPING HANDS INCLUDING FOOD FOR FRIENDS

*A service for all residents of Mickleham and Westhumble*

Examples of services we offer:

- Essential shopping / collection of prescriptions
- Changing library books
- Small tasks: eg changing fuses, altering clocks etc
- Dog walking
- Visiting / befriending
- Home-cooked meals for local families going through difficult times

Requests to:

Will Dennis 07903 842674 **wdwdennis@icloud.com**  
(who can put requests onto WhatsApp)  
Mary Banfield 01372 373912 **mgbmw@aol.com**  
Frances Presley 01306 882473 **jasempres@gmail.com**

*More helpers needed – please contact  
Frances if you can spare some time.*



# Community Directory

Continued from page 13

MICKLEHAM & WESTHUMBLE BADMINTON CLUB  
Membership Secretary – Sarah Blake tinkerbell0044@hotmail.com

MICKLEHAM CRICKET CLUB  
Membership contact - Will Dennis 07903 842674  
will@micklehamhallfarm.co.uk

MICKLEHAM & WESTHUMBLE HORTICULTURAL SOCIETY  
Chairman – David Kennington 01372 362309  
www.surreycommunity.info/mwhs or davidkennington144@gmail.com

MICKLEHAM AND WESTHUMBLE LOCAL HISTORY GROUP  
Chairman – Ben Tatham 01306 882547  
ben@thetatham.co.uk or www.micklehamwesthumblehistory.co.uk

MOLE VALLEY DISTRICT COUNCIL 01306 885001  
Cllr Chris Budleigh 07801 520059  
councillor.budleigh@molevalley.gov.uk

Cllr Abhiram Magesh 07765 126399  
councillor.magesh@molevalley.gov.uk

Cllr Leah Mursaleen-Plank 07803 353352  
councillor.mursaleen-plank@molevalley.gov.uk

THE ARTS SOCIETIES (FORMERLY NADFAS)  
Betchworth – Mary Venning 01306 883301  
Dorking – Sue Tatham 01306 882547  
Leatherhead – Sarah Sheridan 01306 883699

ST MICHAEL'S CHURCH OF ENGLAND (A) INFANT SCHOOL 01372 373717  
info@stmichaels-dorking.surrey.sch.uk

Friends of St Michael's School – friendsofstmichaels2017@gmail.com

ST MICHAEL'S COMMUNITY NURSERY  
WEEKDAY MORNINGS – MICKLEHAM VILLAGE HALL  
Supervisor – Hilary Budd 01372 361021  
stmichaelsnursery@btinternet.com

SURREY COUNTY COUNCIL 03456 009 009  
Councillor – Hazel Watson 01306 880120  
hva.watson@btinternet.com

SURREY WILDLIFE TRUST 01483 795440  
info@surreywt.org.uk

TREE WARDEN  
David Kennington 07546 952521  
davidkennington144@gmail.com

WESTHUMBLE NEIGHBOURHOOD WATCH  
Lead Co-ordinator – David Allbeury 07860 227451  
westhumble.neighbourhood.watch@gmail.com

WHATSAPP GROUP  
Will Dennis will@micklehamhallfarm.co.uk

ADDITIONAL CONTACT INFORMATION

CITIZENS ADVICE  
Dorking – Lyons Court 01306 732302  
Leatherhead – Swan Mews High Street 01306 732301

CRIMESTOPPERS 0800 555 111

POLICE Non-emergencies 101  
(often quicker to make online report) <https://report.police.uk/>

Neighbourhood Specialist Team – Dorking Rural East  
General enquiries molevalley@surrey.pnn.police.uk

NHS Urgent and emergency care 111

## Babysitting by local youngsters

Those listed below are at least  
14 years old.

Gracie Owen \*\*07790 900649  
Annabelle Prosser\* 07443 634179  
Maisy Presley\*\*\* 07720 657327  
Martha Pearce\* 07514 080005  
Rory Lee 07503 702517  
Daisy Armitage 07891 188142  
Olivia Newby 07703 110363  
Eva Lanceley \*\*07903 630567  
Ella Parfitt 07746 882175  
\* Holidays only  
\*\* Parent's mobile number  
\*\*\*Weekday evenings only

If you would like to add your  
name to this list please get in  
touch with  
editor@micklehammag.co.uk  
No Charge

## Advertising in the Parish Magazine

Please contact  
ads@micklehammag.co.uk  
Small ads: a nominal fee is  
charged for ads where items or  
services are bought or sold.

We have been advised to print  
the following reminder:  
*We cannot guarantee the  
quality of the goods and  
services offered by our  
advertisers.*

*We are very grateful to all our  
advertisers, who make the  
production and distribution of  
this magazine possible.*



## Community News

### Have you lost a Cat?



Mickleham residents have been reporting the presence of a cat in their gardens which, at the time of writing does not appear to have a home. Do you know who owns it? Some kind folk are feeding it and it sleeps in a greenhouse. The photo taken by a gardencam may help you identify it.

The newspapers are reporting that new laws are being introduced to outlaw the stealing of pets. There is much debate about whether it is possible to steal a cat. An interesting question.

Michael Calvert wrote:

I regret to advise you that I am resigning as 'delivery boy' for Burford Lodge, as I clock up 90 in a few days time.

I have delivered this month's magazine and I have arranged that my neighbours David and Charmian Murley will take over the duties at the end of February.

The editors replied:

Dear Michael

Thank you so much for letting us know that you are 'retiring' as one of our magazine delivery people. We very much appreciate your work over many years delivering the magazine to all at Burford Lodge. We also send our very best wishes for your 90<sup>th</sup> birthday.

It is excellent news for us that you have recruited your successors: welcome to the MPM team to David and Charmian.

Michael has been a 'delivery boy' for many years as have most members of the team who are involved in bringing the magazine to your door. They are quiet heroes but we really appreciate what they do.



## Church Record

Every church is required to compile and maintain a Terrier, Inventory and Logbook giving details of alterations, additions, repairs, and other events affecting the church or the articles or land belonging to it.

At St Michael and All Angels, an inventory or church record was completed in 1989 by NADFAS (now The Arts Society) in the form of typewritten notes with black and white photographs. Since then, a number of changes have taken place within the church buildings and technology has moved on. We would like to update the details of our church record and compile one for the chapel,

to be held in electronic form for ease of storage and updating, although a copy could be printed off.

A small team consisting of Annette Collinge (who will lead the project), Beverley Mehta, Frances Presley and Sue Tatham, who all have experience of church recording, would like to hear from anyone who might be interested in joining them in this fascinating project. No experience is necessary, just an interest in the church buildings and their contents so if you think this might be for you please contact Catherine on [churchwardens@micklehamchurchorg.uk](mailto:churchwardens@micklehamchurchorg.uk)

## MPM regular contributors see annual report on page 11

It would be impossible to name all who have contributed to the magazine in the last year. Their contributions do not always have a byline. Here are those who have most appearances:

Mark Day Kelvin Pritchard  
Catherine Diffey Feena Graham  
David Ireland Will Dennis

Julia Siberry Cathy Lee  
Pauline and Roger Davis  
Chris Budleigh Janet Barker  
Sue Willis Vicky Leney (baptisms)  
Elaine Machin (weddings)  
Carole Brough-Fuller (funerals)  
David Allbeury Hilary Budd  
Ben and Sue Tatham

Stephanie Randall Nicola Cleather  
Friends of St Michael's School  
Angela Gilchrist Alison Walton  
Alison Wood Neil Mason  
Graham Manning Judith Long  
David Kennington Barbara Jones  
Andrew Tatham  
the late Judy Kinloch



Mickleham & Westhumble Horticultural Society

## Spring Offer

Every garden needs compost... lots of lovely compost!



It's time to order in well-rotted manure and peat free compost ready for the growing season. By placing a bulk order we are able to offer these excellent prices

Country Naturals Well-Rotted Stable Manure £3.50 per 80 litre bag

Sylvagrow general purpose peat free compost £6.70 per 50 litre bag

Westland peat free multipurpose compost with John Innes £6.50 per 50 litre bag

Collection from Mickleham Village Hall car park on Saturday 23<sup>rd</sup> March between 10 am and midday.  
Last orders placed and paid for by 9<sup>th</sup> March please. Email [lucyadshead@lapurple.co.uk](mailto:lucyadshead@lapurple.co.uk) for an order form.

If you would like to bag some of this bargain compost, why not join the Horticultural Society?

Annual membership is only £5 per household.

For membership enquiries, please contact Judith Long [judith.long2@btinternet.com](mailto:judith.long2@btinternet.com)



## Report from Church Eco Group



*A robin enjoys the treasures of the churchyard compost heap*

This winter has seen less actual physical activity than last year, but progress is still being made towards the goal of Bronze Eco accreditation

The results of the audit into the energy consumption of the Church and Westhumble Chapel have been evaluated and an action plan proposed.

The PCC need to approve the plan and costs before moving forward. Any implementation is aimed at reducing CO<sub>2</sub> emissions by using less energy or by only using energy from renewable sources. Cost savings may be a welcome by-product of this aim. It is recognised that it will take some time for all the recommendations to come into effect.

The grass cutting regime for 2024 will include cuts, where planned, in both June and September. It was evident from last year that the large amount of grasses are out-competing the less aggressive flowering plants and that balance needs to be redressed. Over time, cutting and removing grasses both weakens them and allows other plants to get established and set seed. It is preferable to allow this to happen naturally rather than bringing in seed or plants from elsewhere. Cutting twice in the year just gives nature a helping hand

and we will monitor the results closely.

We have given away just under one thousand hedging plants this winter to local use. A slight over-ordering of free planting packs has enabled this generosity, which will further benefit our native wildlife.

Finally we can confirm that Mickleham definitively has bats in the belfry! Four species have been found to use the church and belfry, Serotine, Brown Long-Eared, Common Pipistrelle and Soprano Pipistrelle, all relatively common but very welcome nevertheless and all are insectivorous. To that extent they are indicators of a healthy local insect population, living in the open fields and woods nearby. More surveys this year will try to establish whether they are just visitors or are roosting or breeding in the church building.

David Kennington

## RSPB Dorking and District

Did you know that there is a very active branch of the Royal Society for the Protection of Birds in Dorking? The group's programme of activities includes indoor meetings with talks and weekend and midweek walks to good bird habitat locally and further afield. The current membership includes several very talented photographers who post pictures on the group's Facebook page. In early February

several members went to Brighton one evening to observe the murmuration of starlings over the two piers before they settle to roost there when darkness falls. They estimated that they saw about 20,000 birds over the sea.

See photos and videos at **Facebook RSPB Dorking and District**; and visit the website [group.rspb.org.uk/dorkinganddistrict/](http://group.rspb.org.uk/dorkinganddistrict/) for information about membership and activities.



*Spoonbill*

*Photo taken by RSPB member John Bartlett on a group visit to Farlington Marshes nature reserve near Portsmouth in February*

## Grumpy Old Mickleman Itchy Clothes' Labels

It is a major cause of global angst. Yet there is no newspaper coverage, no International Itch Institute or 'Scale of Itchiness'. No Panorama investigation or legal actions. 'Man Breaks Leg due to Itch While on Escalator', etc.

If it is not the crusty nature of the brand label itself, it's the stitching. Or the separate size tag. Whichever, it is in a position which requires some contortionism to reach and scratch. Asking the person in the seat behind

you on the 465 does not always get a favourable response.

I am told, although my personal experience of this is somewhat limited, that tights have similar characteristics, though usually not in the same spot. No wonder thieves have switched to balaclavas to hide their facial identity: too many got caught when they ripped their tights off to scratch their nose.

Removal at source requires advanced tailoring skills. A frustrated attack



with a pair of scissors in the kitchen invariably worsens the itch, or consigns the garment to recycling.

An election-winning issue: Ban Itchy Labels! Or at least put a warning label on.

Mark Day

## A Modern Kitchen Garden

At our latest Garden Shed gathering, we were joined by Mark Dobell who has delivered many gardening presentations for us as well being one of the judges for our local horticultural society. Mark has spent his career in gardening and his happiest years were as estate manager and head gardener at Little Mynthurst Farm, former home of Lord Baden-Powell, where his main achievement was to modernise the Victorian kitchen garden. We invited him along to talk about the transformation process and share some of his favourite fruit and vegetable varieties. Using just two slide cassette decks, he summarised 22 years of work, which was no mean feat, as was the work he undertook at Little Mynthurst.

When Mark arrived in the early 1990s, as well as maintaining ten acres of garden, he was faced with transforming the Victorian kitchen garden which was made up of two, 12 metre vegetable beds, as well as a 100-year-old glasshouse. He started by redeveloping the glasshouse; increasing the footprint, replacing the metal frames with cedar wood and dividing the space into five sections. This enabled Mark to create zones for different plant requirements including tomatoes, melons and cucumbers, peaches and vines as well as to bring on seed produce for the garden. The new glasshouse became the focal point of the kitchen

garden and to provide an uninterrupted view the fruit cage had to be moved.

Having completed this work, Mark then embarked on tackling the two large vegetable plots. This took over three years to complete and was undertaken by Mark and his team of three gardeners who had to learn to mix concrete, lay bricks and design the overall plan. The redesigned area featured a series of triangular beds planned to give easy access to crops and cut flowers by a series of paths surrounding each bed. Once finished were filled with almost every imaginable fruit and vegetable.

To get the best results as the garden was on clay Mark used Chichester grit to help with drainage, and manure from a local farm. To protect young plants from pigeons, pests and late frost, Mark covered them with fleece. Later he experimented with organic gardening and stopped using pesticides. However, cabbages became infested with caterpillars, and when he and his team were no longer able to manage their removal by hand Mark found an organic deterrent called *Bacillus thuringiensis*, the main ingredient in products we now use to control box caterpillar.

As Mark shared more detail about the fruit grown in the glasshouse, his passion for getting the best from each individual plant became apparent. He described pruning a young peach tree



over two years to create the right fan shape. In the vine house, to ensure the bloom was not disturbed when thinning grapes, he developed a tool made from a plastic fork.

Listening to Mark provided inspiration to the most reluctant of us to give up even a small space in our flower beds or gardens to invest in making our own kitchen garden. If you are looking for seeds or produce, below is a list of specific varieties that Mark recommended.

Cauliflower – Nautilus  
Lettuce – Suzan, Lollo Rosso,  
Lollo Biondi

Cabbage – Minicole  
Potatoes – Cara  
Runner beans – Celebration  
Carrots – Eskimo

Brussel Sprouts – Red Bull  
Peach Tree – Rochester

Apricot Tree - Moorpark

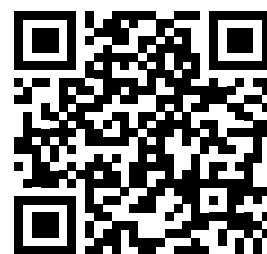
*See the Village Summer Fair advert on page 2. A fun event for all the family.*



& Derek Horne  
Associates

Your local **Town Planning Consultancy**  
winning permissions for over 30 years!

W: horneassociates.com | E: info@horneassociates.com | T: 07767 477978



Scan with your phone camera  
to find out more.

CURCHODS

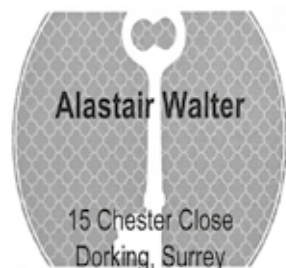
Thinking about moving in 2024?

Buy, sell, let and rent in Bookham, Fetcham,  
Mickleham, Westhumble and Dorking with  
your local award-winning estate agent.

01372 450500 | bookham@curchods.com



Cole and Walter Lock & Key



07890 609194 | alastairwalter123@btinternet.com  
Supply and installation of all locks  
Residential and Commercial

DORI VANA PLUMBING

Bathroom renovations and  
all plumbing services

07977 220465 / 01306 887282  
dvanaplumbing@gmail.com



GB PLASTERING

Established 1999

We offer all aspects of plastering from  
small repairs to new builds  
All undertaken by skilled plasterers, respecting  
your home and property  
Full insured Westhumble based  
07970 591962

All your annoying & odd jobs fixed fast

Are you: struggling to get your odd  
jobs done?  
lacking the necessary skills?  
struggling to find the time?  
lacking the correct tools?  
struggling to find a reliable  
person?



Mickleham based...  
**07939 131593**  
help@toolboxtony.co.uk

see [toolboxtony.co.uk](http://toolboxtony.co.uk) for more information on services offered

## The licensing law is an ass

There are many outdated and absurd laws out there, but some of the most stupid are recent. During the pandemic, for example, the laws changed regularly, and government guidance was often different from the law. A few examples:

\* there was never a law saying you could exercise outside only once a day for a maximum of an hour. Boris Johnson frequently said there was, but it was never the case. Accuracy is not his strong point, and that's being kind.

\* there was, at one point, a law saying that you could only be outside your home for limited purposes, one of which was exercise. 'Exercise' was not defined, resulting in a client of mine being ticketed for doing yoga in a park. He was black and the police officer was white. He accused the officer of racism, and was promptly arrested under public order legislation. I am pleased to say I got him off that particular charge.

\* at one point the Surrey Police Commissioner told us that delivery of parish magazines would breach the law. We challenged this, and it turned out he was referring to Cabinet Office guidance to the police, not to the law. That is the same Cabinet Office, by the way, who were at the same time themselves cheerfully breaching the law on a daily basis.

Thankfully, all that is behind us. What are still with us, however are, the licensing laws, some of which appear to have been drafted by persons one sandwich short of a picnic (or possibly evangelical teetotalers). Consider the following scenarios, some of which may be familiar to you.

1. You have a charity fair, free to enter, at which you sell mulled wine.
2. You have a carol party for which you

sell tickets and, at the party, you give away mulled wine.

3. You have a charity fair, free to enter, and it includes a tombola, some of the prizes for which are bottles of booze.

4. You have a musical event, free to enter, but you provide mulled wine and invite donations to charity.

It may surprise you to know that in all these scenarios the courts have decided that the organisers will require a Temporary Event Notice, or TEN, for the sale of alcohol. Stupid? In my humble opinion, yes. The law? Definitely.

Applying for a TEN is supposed to be easy, but Mole Valley District Council has made it as difficult as it can.

You have to download a form (which does not download on Macs, only PCs), fill it out electronically and submit it on their website 10 clear working days before your event. MVDC interpret this to mean that, if your event is on a Saturday, you have to submit within working hours on the Friday 15 days previously. For a limited number of applications each year, the 10 working days' requirement is reduced to 5.

The form uses many technical terms, and it is easy to fill it out incorrectly. If you do get it wrong, and they spot the mistake, and you are then within the 10 clear working days period, they will simply reject the application. No opportunity to amend the form. Sorry, this is Mole Valley District Council, who do not do flexibility or the Christmas spirit.

If you do get it right, you then have to pay £21. OK, it's not megabucks, but for a charity event trying to save every penny, it matters. If you get the form wrong but resubmit it correctly before the 10-day period they will accept it, but (you guessed it) charge you another £21.



Dorking Museum has a full range of activities for families in March including the Easter Challenge, between 23<sup>rd</sup> March and 13<sup>th</sup> April, when families are invited to follow clues round the museum to spell a name. When you have completed the challenge, collect a small edible prize. Check details at



When this law first came out, some 10 years ago, I was chatting to a police officer, who gave it as his view that it was bureaucracy gone mad. How true. However, it is the law, and we should not ignore it.

And finally, you have to display a copy of the 'countersigned' notice. You will not actually be sent a countersigned notice, so how you display a copy of it is a bit of a moot point.

There is some unexpected humour here however. The form asks if you want to put on 'relevant entertainment'. So we ticked all the boxes and got the licences, and have only recently discovered that 'relevant entertainment' means lap dancing! Or, as the law puts it 'live performances of nudity seeking to sexually stimulate the audience.' Sorry about the split infinitive. But think of the fun we could have had at all those tedious quiz nights and harvest suppers...

If anyone needs assistance with this mindless bureaucracy I am happy to help. My usual fee is a pint of Pride in the Runners; they already have a licence.

Will Dennis

*Editor's note: The current MVDC advice about Temporary Event Notices (TENs) is contained in: <https://www.molevalley.gov.uk/community/temporary-event-notice/>*

*The Mickleham Village Hall holds a licence for live music and dancing but not for sale of alcohol. Hirers of the Hall can apply for a TEN provided the number of TEN events for the premises does not exceed 15 per calendar year.*

## Dorking Museum

[www.dorkingmuseum.org.uk](http://www.dorkingmuseum.org.uk)

The Museum is run entirely by volunteers and is looking for new recruits who can spare a few hours a month to contribute to this important community resource. See [dorkingmuseum.org.uk/about/volunteer-opportunities](http://dorkingmuseum.org.uk/about/volunteer-opportunities) for further details and an application form.



**CARPET REVIVAL** **REVIVING CARPETS & UPHOLSTERY IN SURREY**  
*Covering Dorking and all surrounding areas*

We clean to a professional standard using eco-friendly chemicals and the latest equipment.  
*Offering a thorough survey, clean and customer satisfaction. Certified and insured.*

Call 01306 740035 / 07747 122128  
 or visit [www.carpetrevival.co.uk](http://www.carpetrevival.co.uk)  
 to book a free home visit/quotation

Quote Code 'CR110' and save 10% off your booking

**STEVE LAWRENCE**  
**PLUMBING HEATING ELECTRICS**  
 Boiler installation, maintenance and repair  
 Based in Mickleham Local references  
 30+ years' experience

07760 266718  
[stevenlaw37@hotmail.com](mailto:stevenlaw37@hotmail.com)



**Vivien Cresswell**  
 Made-to-measure Soft Furnishings  
 Curtains Roman Blinds Cushions

Extensive range of fabrics

01737 843858  
[info@cresswellcurtains.co.uk](mailto:info@cresswellcurtains.co.uk)  
[www.vivienecresswell.co.uk](http://www.vivienecresswell.co.uk)



  
**Joseph De Decorators**  
 • Painting • Decorating  
 • Wallpapering • Plastering • Tiling  
 Mickleham based  
 40 years' experience

01372 372331 07973 358 932

**Domestic Appliance Repairs**  
 30 years' experience repairing and installing all gas and electric domestic appliances



- Cookers, Microwaves
- Dishwashers
- Washing machines
- Fridges / Freezers
- Water coolers
- Coffee machines
- Tumble dryers

Contact: Andy 07895 719 706  
[andy@kirksdomestics.co.uk](mailto:andy@kirksdomestics.co.uk)



**PAINTING DECORATING**  
 ANDREW CLARK 07800 796 737

INTERIOR & EXTERIOR • CARPENTRY • HANDYMAN

**Dorking Pest Control Services**  
 Local Authority Approved Contractors

Our Services include: Wasps, Bee Swarms, Hornets, Rats, Mice, Squirrels, Fleas, Flies, Ants, Cockroaches, Bed Bugs, Rabbits, Moles, Foxes and Deer

• Domestic, Commercial and Industrial • Contract Work • Preventative Control Programmes

Experts in pest control throughout Surrey

Office: 01306 743001 Ivor: 07710 117491 Chris: 07971 519415

[www.dorkingpestcontrol.com](http://www.dorkingpestcontrol.com)



## Surrey LIDAR Portal

Surrey Archaeological Society have recently launched their LIDAR portal. LIDAR (Light Detection And Ranging) uses a pulsed laser to measure distances and importantly for archaeologists, it can see through buildings, trees and other vegetation, revealing features underneath. The portal is open to everyone and is very easy to use. The LIDAR map now covers the whole county and users can zoom in on any site of interest. A series of maps from tithe map of 1838 to modern OS maps can be superimposed on the Lidar images to show the user what

the features on the LIDAR map might represent.

The LIDAR image shown here is of the field leading down from Westhumble to the River Mole and the same area shown on the first edition of the Ordnance Survey map of 1871. The 1871 map shows a rectangular feature (174) towards the bottom of the picture, which is clearly man-made and now exists just as a steep slope in the field. In the 1838 tithe map the feature extends south across Westhumble Street and further east, to where '177' is shown as the field number on the 1871

map. The path from Westhumble to the River Mole is clearly shown on the 1871 map and can still be made out on the LIDAR map (nowadays the track past Catbells). In the 1838 map, the path led to Pray Bridge over the Mole, and on to Mickleham by the most direct route.

Archaeologists have already used the LIDAR images to identify potential sites of interest. The portal shows a possible settlement site above Ham Bank and extensive medieval field boundaries south of Chapel Lane.

You will find the LIDAR Portal at [www.surreylidar.org.uk](http://www.surreylidar.org.uk)

Chris Budleigh

### The Lidar map



### The Field map





When considering selling or buying;  
a personalised property service for clients ....

Tim Garbett and his team are based in the Home Counties and Central London, handling a variety of clients & properties.

*'Embarking on a sale or purchase is a major commitment and we ensure a client's property journey is tailor made to their requirements and for us to advise and navigate in an ever changing property market.'*



Please contact our team  
tim@garbett.partners 07831 576616  
sam@garbett.partners 07979 876380  
www.garbett.partners  
timgarbettgp

## Phil's Mowing Dorking

Regular Lawn Mowing  
General Garden Maintenance  
Lawn Care & turfing  
Hedge Trimming  
Pressure Washing



phil@philsmowingdorking.co.uk  
07905 160 765

**Building Plans**  
For home improvements & extensions  
Including planning & building regulations  
Fast efficient service at competitive rates

**MICHAEL LLOYD** CEng MICE

For free consultation:  
Phone: 01483 205479 or 07958 791 402  
mfl\_uk@yahoo.co.uk

**Get IT Fixed, Get IT Connected**  
Expert Repair & Maintenance



Brockham based. No call out charges. Fully transparent quotations with no hidden costs. We make technology work for you.

Call us now on  
**01737 845980**

ChalkHill Systems  
www.chalkhillsystems.co.uk



Extensions and alterations often require a  
Structural Engineer

**Robert Wynter & Partners Ltd**  
01306 879875

Book House, Vincent Lane  
Dorking RH4 3HW  
www.rwpltd.com

## remedial roofing

For people with roof issues and deficiencies

- New roofs – slate & tiled roof specialists
- All roof repairs, moss removal & gutter clearance
- Flat roofs, traditional felt & GRP fibreglass
- New uPVC Fascia, soffit & guttering

Obtain an up-to-date report of remedial roofing on [www.checkatrade.com](http://www.checkatrade.com)



**ALL WORK GUARANTEED**  
Call us today for a FREE quotation on:  
01306 304736 | 07852 833802

[info@remedialroofing.co.uk](mailto:info@remedialroofing.co.uk) [www.remedialroofing.co.uk](http://www.remedialroofing.co.uk)



We will have moved onto the 'next topic' by the time this March issue of the magazine comes out, but these Chinese New Year greetings, relevant as I write, wishing you prosperity are still heartfelt.

Celebrating Chinese New Year is an annual topic at nursery. It is both important for children to experience a culturally diverse world and for their own cultures to be valued and shared with their peers. We were delighted to have a family share their Chinese New Year celebrations with us and I learned that some decorate their houses with Chinese New Year trees, similar to an

## Kung Hei Fat Choi!

Easter tree. It might be a little early to have some English blossom, but I can see that we will try and recreate this next year.

The children learned about and acted out the Chinese Zodiac story, made mini-Chinese dragons, attempted to write Chinese numbers and most of us enjoyed being part of the dragon or playing music for the dragon to dance to.

It did get rather loud – sorry neighbours!  
Hilary Budd



Sunday 10th March 10.15am

Tickets free, donations welcome. Please book through the school office or by emailing Becca on [rjmcmullin@hotmail.com](mailto:rjmcmullin@hotmail.com). Refreshments included.

Followed by a special  
Mother's Day Family  
church service

Sundays  
at  
Six



**VOICE RECITAL**  
THOMAS ELWIN - TENOR  
TRACY KENNINGTON - PIANO  
Sunday 10th March 6 pm  
at St Michael and All Angels  
Church, Mickleham

Programme to include works by Mozart, Puccini and Italian arias. Thomas performs on operatic and concert stages across Europe, most frequently at Oper Stuttgart where Thomas was a Young Artist.

Retiring collection in aid of Macmillan Cancer Support.



Come and visit Silvermere Softplay Centre, where the joy and benefits of play are exceeded!

Situated in the heart of Dorking's Meadowbank Park, Silvermere's newly established softplay centre is an accessible and inclusive space for children and young people to unleash their natural energy through movement, play, and connection with others. We offer soft play sessions; pre-school play and parties. Our aim is for Silvermere Softplay to become a thriving hub for the community, where everyone – young and old – feels welcome. Later this year, we will be introducing structured movement-based groups to enhance wellbeing and connection for adults, as well as for children and young people.



**Silvermere Softplay**  
Meadowbank, Dorking RH4 1DX

Our warm and welcoming café – serving a delicious range of homemade, locally-sourced food and drinks – is the perfect space for everyone, including well-behaved pooches, to relax and connect.

For more info and booking: [www.silvermere-softplay.co.uk](http://www.silvermere-softplay.co.uk)  
Proprietors: Katie and Michael of School Lane, Mickleham



**Mickleham Village Hall, Dell Close**  
Weekdays 9.15 am - 2.45 pm (term time)

Mornings only or longer sessions available

Cosy preschool nursery • Superb garden and forest school  
We offer an excellent range of pre-school activities for 2-to 5-year-olds, where children can learn through play in an informal, well-resourced, friendly atmosphere.

Contact us for more information about admissions  
**01372 361021 [www.stmichaelscommunitynursery.co.uk](http://www.stmichaelscommunitynursery.co.uk)**

## Suitable items for the foodbank collection

Tinned veg / tomatoes / soup / sauces / baked beans	Washing-up and cleaning products
Powdered milk / UHT milk (green and blue only)	Tissues / paper towels / tampons
Rice pudding / long life sponge puddings	Men's / women's toiletries
Coffee / tea bags / long life fruit juice	Laundry products
Pasta / rice / pulses / instant mash	Nappies
Jam / honey / marmalade / spreads	Pet food
Sugar (500g bags only)	



**Please do not include  
out-of-date items or those  
that require refrigeration**

LOCAL FOOD BANK COLLECTION POINTS

**MICKLEHAM**  
Garden Corner off Old London Road  
Mary Banfield 01372 373912

**WESTHUMBLE**  
St Anthony Pilgrims Way  
Sue Tatham 01306 882547

Items may also be brought to St Michael's Church on Sunday mornings

A TALK ON CHRISTIAN SCIENCE

### CAN SPIRITUAL PERCEPTION BRING HEALING?

We are not stuck! Understanding more clearly our relationship with God, infinite good, ends fear and leads the way forward.



7th April @ 3:30pm Sunday

**LOCATION**  
St. Michael's Church of England Infant School  
School Lane  
Mickleham Dorking Surrey RH4 6EW  
Nursery care will be provided

**CONTACT**  
01306882583  
[www.christianscience.org.uk/dorking](http://www.christianscience.org.uk/dorking)



**Alex Fischer, CS**  
Christian Science practitioner  
Member of the Christian Science  
Board of Lectureship

**HOSTED BY**  
First Church of Christ, Scientist  
Dorking Surrey

In this one-hour talk, or heart-to-heart sharing, as advertised left, Alex Fischer CS from Pau, France will give an overview of Christian Science, its key concepts, a little of its history, some examples of healing, and some clarifications about typical misconceptions. Alex will take questions afterwards.

Admission free.

## Young Children Can Make a Real Difference



**St Michael's School**

[stmichaels-dorking.surrey.sch.uk/](http://stmichaels-dorking.surrey.sch.uk/)

At Newdigate and St Michael's CE Infant Schools in Surrey, we teach our young children that they may be small but they can make a real difference to their community and beyond if they put their mind to it. Each term we hold a, 'Make a difference week'. Children are given opportunities to be courageous advocates for social action projects that are close to their hearts.

All children are guided to be on the lookout for inequalities and injustice, things that just do not feel right, and do something about it. This was most certainly the case for Olivia Bassage, a pupil in Year 2 at Newdigate Infant School, who watched a video at home where she saw families that did not have access to clean water. She was horrified that this was the case and wanted to do something about it. After talking to staff at her school a plan was formed and we were ready for action.

Working as a federation, both schools contacted Water Aid and asked to work with them to raise awareness and raise funds to support their wonderful work. Olivia is a keen artist, so we decided to harness her talent and planned an art exhibition in both schools with a water-based theme. Children in all classes studied a famous artist (David Hockney's 'The Splash' or Monet's 'The Bridge') and then went about creating their own masterpieces. The results were amazing. We wanted our pupils to feel like real artists, so their artwork was framed and sold to families at our very own art exhibitions. Olivia also sold some of her own artwork and was commissioned to make a bespoke piece! All in all the two schools raised almost £500 which was donated to Water Aid.

The children found out exactly where the money was going when Jez Heath, the Innovation Manager for SES Water,

took the time to visit both schools and share videos and pictures of his travels with Water Aid. He showed our young children exactly what they might use the money for. They were aghast when they saw the difficulties experienced in other countries but were equally heartened by the news that even the smallest contribution can bring big changes to water access and hygiene facilities and empower communities to change. Counting how many taps we have in our own homes and how easily we access clean water was food for thought.

Who knows what our next 'Make a Difference' project will be, but we will look to our young pupils to inspire us and lead the way as they always do.

Nicola Cleather



A reminder of coming activities for children...

Sunday 10<sup>th</sup> March - 10.15 am in St Michael's Church  
**Mother's Day Craft Workshop**  
followed by Mothering Sunday Family Service (See page 25)

Thursday 21<sup>st</sup> March - 3.15 pm to 4.45 pm  
**Messy Church in the village hall** (See page 3)





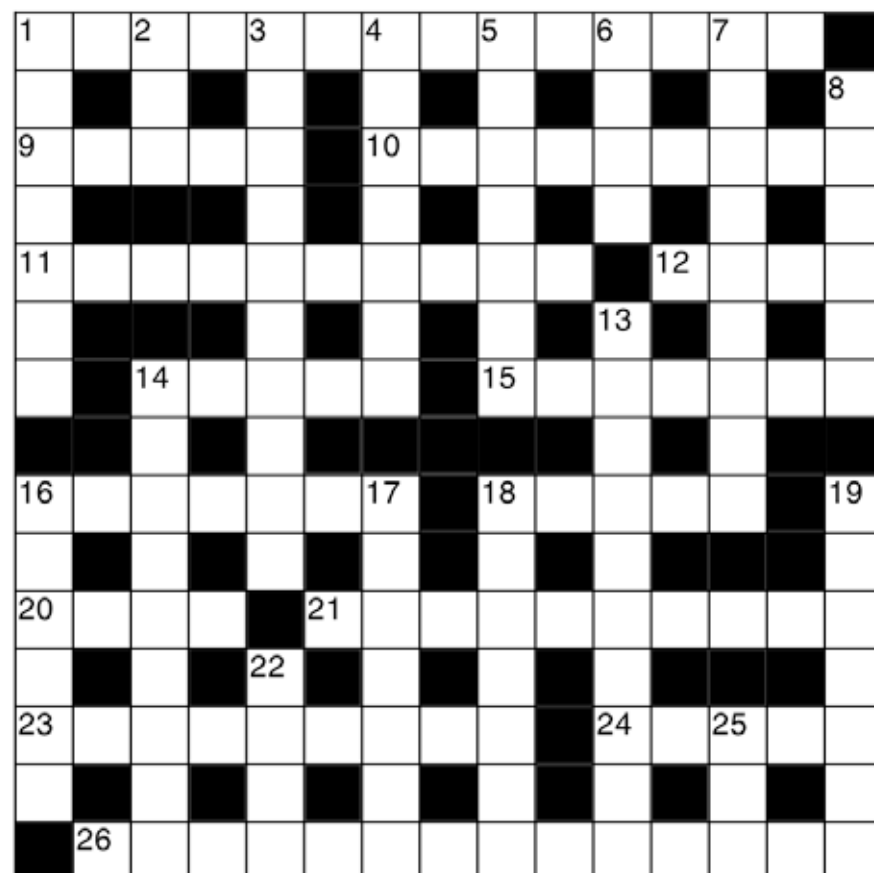
# Cryptic Crossword



This is a crossword compiled by the late Richard Roberts-Miller. It appeared in the March issue of this magazine - ten years ago. The solution will appear in the April issue.

Across

- 1 "GBNA" is a common expression of criticism (4,3,2,5)
- 9 Cry of pain from cockney and French bird (5)
- 10 Equus capers? (9)
- 11 Amateur detective who had drunk ale with Ms Prism (4,6)
- 12 Opposed to politicians in pantihose (4)
- 14 Enter the President (5)
- 15 Former Portuguese colony stories have their defenders (7)
- 16 A market town, like parts of Guildford or Kingston (7)
- 18 Give a green light to part of match (5)
- 20 Miners stunned at the close of nightclub (4)
- 21 8 could be a song or aria when... (3,2,5)
- 23 Useful sounding headgear for horses (9)
- 24 Component of many long staple fabrics (5)



- 26 Old nursery rhyme that may well have become popular here recently? (4,4,2,4)

Down

- 1 Flower queen makes a mistake (7)
- 2 Assets of the penniless (3)
- 3 Competitor is agitated re: eye tests (10)
- 4 Near the ruined capital of Iran (7)
- 5 Part of what sounds like a quadruped (7)
- 6 Regretted sounding offensive (4)
- 7 Inelegant wild rose shrub (9)
- 8 Cyril's ordered to produce these (6)
- 13 Madly romances at California city (10)
- 14 Serious disorder of army piano (9)
- 16 An hour in run down boat (6)
- 17 Car named for city or island (7)
- 18 Skilled worker, perhaps one whose art is an excuse to charge more? (7)
- 19 Strange? Not shrewd? Both! (7)
- 22 Oven built in back of unlikely location (4)
- 25 Cattle noise has blown the ends off (3)



## Dorking Group of Artists Spring Exhibition

Betchworth Village Hall, Station Rd, Betchworth, Surrey RH3 7DF  
opposite Knights Garden Centre

Open to the public: 10 am to 5 pm Friday May 3<sup>rd</sup> to Sunday May 5<sup>th</sup>  
10 am to 4 pm Monday May 6<sup>th</sup>

Entrance to the exhibition is free

For more information see [www.dga.org.uk](http://www.dga.org.uk) or Facebook page @dga4art  
or get in touch at [contact@dga.org.uk](mailto:contact@dga.org.uk)



**RESIDENTIAL • COMMERCIAL  
AGRICULTURAL • SCHOOLS • ACOUSTIC  
HOARDING • GATES • SECURITY**

**RICHARDSON & BRADS FENCING LTD**  
**T: 01306 640 143 - 01483 414 745**  
 E: [INFO@RBFENCINGLTD.CO.UK](mailto:INFO@RBFENCINGLTD.CO.UK)  
 W: [WWW.RBFENCINGLTD.CO.UK](http://WWW.RBFENCINGLTD.CO.UK)  
 A: 168 SOUTH STREET, DORKING, SURREY, RH4 2ES

## J S Wilson

Mickleham

# Carpentry & Building Services



Extensions ~ Conversions  
 Refurbishments ~ Property Maintenance  
 Fully guaranteed ~ Fully insured  
*One call WILL solve it all*

Contact Jason on: 07761 926684 or 01372 379359  
[info@jasonswilson.co.uk](mailto:info@jasonswilson.co.uk)




Tracey's  
sewing room

where beautiful things come  
together one stitch at a time

We are now open in Dorking

Haberdashery & Fabrics  
 Sewing workshops  
 Alterations  
 Bespoke dress making  
 Blinds, cushions & curtains

Visit us at No 1 North Street

[traceya@traceyssewingroom.co.uk](mailto:traceya@traceyssewingroom.co.uk) 07511079441  
[www.traceyssewingroom.co.uk](http://www.traceyssewingroom.co.uk)



**Treeline Services Ltd**

**YOUR LOCAL PROFESSIONAL  
TREE HEALTH CARE SPECIALISTS**

Felling • Pruning • Stump Removal • Planting  
 Woodchip • Air Spade Services • Consultancy

Call us on **01306 741800**  
[office@treeline.co.uk](mailto:office@treeline.co.uk) • [www.treeline.co.uk](http://www.treeline.co.uk)



**WELL-SEASONED LOGS  
FREE LOCAL DELIVERY**



## Need help with your accounts?

Running a business needs time and energy – don't waste your time working on your accounts when you can work on your business instead!

At a4c we provide fixed fee accountancy solutions with friendly support throughout the year. Services include accounts, tax returns, VAT, payroll, book-keeping etc.

Friendly approachable and local to Dorking – we enjoy getting to know our clients so call us today for a no obligation chat.

**We LOVE numbers so YOU don't have to!**

**01737 652852**

esther@a4cgroup.co.uk

www.a4cgroup.co.uk



## Helping older people to live well in their own homes since 2010



- ♦ Award winning care ♦ Companionship services
- ♦ Home help services ♦ Personal care services
- ♦ Highly trained Care Professionals

If someone in your family needs a little help please contact us on  
**01372 741544**



[www.homeinstead.co.uk/epsom](http://www.homeinstead.co.uk/epsom)

Email: [simon.burrowes@homeinstead.co.uk](mailto:simon.burrowes@homeinstead.co.uk)

Each Home Instead franchise is independently owned and operated. Copyright © Home Instead® 2022.



EST ——— *The* ——— XVI

## • RUNNING HORSES •

You are sure of a warm welcome at this historic 16<sup>th</sup> century inn.

Join us daily for lunch and dinner, and on a Sunday bring the whole family to us for our delicious home-cooked roast dinner.

We have seven feature rooms, each named after a different racecourse.

### OPENING HOURS

Monday – Sunday 12 noon – 11 pm

Old London Road, Mickleham  
Dorking RH5 6DU

**01372 388422**

[bookings@therunninghorses.co.uk](mailto:bookings@therunninghorses.co.uk)

## npd

REFURBISHMENTS

Bathrooms • Plastering • Tiling • Kitchens



We can offer specialist services or complete project management including inspirational design ideas. No job is too big or too small.

What you can expect from NPD Refurbishments:

- Close attention to detail and true craftsmanship with trusted testimonials
- Use of high-quality materials yet working with suppliers to obtain the best possible prices
- Use qualified and reliable contractors where necessary
- Unlimited options and flexibility to allow changes throughout the building process
- Help and advice in selecting amenities and options you will be happy with
- Constant communication to keep aware of project status
- Down to earth approach but high level of workmanship
- A tidy job environment to minimise disruption
- An open, comprehensive and honest quote

01403 738103

07917 457286

[npdrefurbishments.com](http://npdrefurbishments.com)