

# MICKLEHAM PARISH Magazine

A community magazine for Mickleham and Westhumble



September 2018

**P.F. WINDIBANK**  
FINE ART AUCTIONEERS & VALUERS  
Buying and Selling Jewellery Silver Antiques and Collectables



*We offer comprehensive Probate and Insurance Valuations*

P F Windibank Auctioneers  
The Dorking Halls Reigate Road Dorking Surrey RH4 1SG  
01306 884556 sjw@windibank.co.uk www.windibank.co.uk

**Bullimores**  
Chartered Accountants

**The Safe Pair of hands**  
Tax • Accounts • Probate  
Inheritance Tax & Executorship

For advice, please call us on: **01306 880880**  
or email: [partners@bullimores.co.uk](mailto:partners@bullimores.co.uk)  
[www.bullimores.co.uk](http://www.bullimores.co.uk)

Bullimores LLP licenced to carry out the reserved legal activity of non-contentious probate in England and Wales by the ICAEW



**STEAK NIGHT**  
**EVERY TUESDAY**  
**TWO COURSE MEAL**  
**GLASS OF WINE**  
**£19**

**Food Served All Day – Free Wi-Fi**  
**Walkers – Muddy Boots – Cyclists – Families and dogs**  
**All welcome**

*Lovely function room available for meetings family and business events*

Near Box Hill and Westhumble Station  
**01306 889932** [www.steppingstonesdorking.com](http://www.steppingstonesdorking.com)  
[steppingstonespub@gmail.com](mailto:steppingstonespub@gmail.com)

**Please see  
website  
for  
special  
events**



**Sherlock Funeral Service**

*Sherlock Funeral Service is an Independent family owned business, established over 100 years*

- Private Service Chapel & Rest Rooms
- Home visits arranged if required
- Pre-Paid Funeral Plans available
- Free Parking

**Telephone: 01306 882266**  
Trellis House, 190 South Street, Dorking RH4 2ES.  
Email: [office@sherlockandsons.co.uk](mailto:office@sherlockandsons.co.uk)





**Funeral Directors & Monumental Masons**

# MICKLEHAM PARISH Magazine

September  
2018

## Mickleham Parish Magazine

A community magazine for Mickleham and Westhumble published under the auspices of Mickleham PCC with an independent editorial panel.

The magazine is published at the beginning of each month except January and August.

**COPY DEADLINE**  
**FOR THE**  
**OCTOBER 2018**  
**MAGAZINE**  
**Sunday**  
**9<sup>th</sup> September**

send to:

Sue Tatham  
St Anthony Pilgrim's Way  
Westhumble  
Dorking RH5 6AW  
01306 882547  
[editor@micklehammag.co.uk](mailto:editor@micklehammag.co.uk)

Contributions in any form are welcome as are good quality photographs. There is no charge for advertising local charity and community events. However the editors reserve the right to shorten omit or reformat articles submitted for publication depending on space.



Printed by Bishops Printers  
Portsmouth

The Rectory, Mickleham

Dear friends

How would you define love? It's not easy, is it! Jesus gave His followers a new commandment, to love one another just as He loves us, and that is not easy either! But it is possible if we take one small step at a time, and it's amazing how God's love can potentially change the whole planet.

The word used in the Bible is quite specific in its meaning, which is to highly value, to unconditionally have at heart the genuine welfare and best interests of the person loved. It includes both a rational commitment and a motivation to maintain a relationship, despite all that may come along to cause challenges to actually love other people. And when we obey this commandment, it can make such an amazing difference.

I read a story some years ago of a college professor who one year had his sociology class go out into the slums of a big city, with the instruction to collect evidence and write case histories of 200 young boys. At the end of the case studies they were asked to write an evaluation of each boy's future. In every case the students' comments were almost identical 'He hasn't got a chance.'

Twenty-five years later another sociology professor came across the earlier study and he had his students follow up on the earlier project to see what had happened to those boys. The results were staggering! With the exception of 20 boys who had moved away or died, the students learned that 176 of the remaining 180 had achieved more than ordinary success as solicitors, doctors or businessmen. The professor was astounded and he decided to pursue the matter further. Fortunately most of the men were still in the area and he was able to contact them and ask 'How do you account for your success?' In each case the reply came with feeling, 'There was a teacher...'

He tracked down the teacher. She was an old but alert, sprightly lady and the professor asked her what was the magic formula that she had used to pull these boys out of the slums into successful achievement. The teacher's eyes sparkled and her lips broke into a gentle smile. 'It's really very simple' she said. 'I loved those boys.'

What transformation could take place in our communities if, like the teacher in the story, we took Jesus's commandment to heart and loved other people, having their best interests at heart!

As we move from this incredibly hot summer into the autumn season, perhaps all of us could make a commitment, whatever our own personal belief system, to reach out to others in a more loving and caring way, seeking their genuine welfare and well-being. This parish already has such a wonderful community spirit, imagine if this was significantly magnified because we all sought to love one another as God loves us.

Every blessing

*John*

Reverend Canon John Harkin  
Parish Priest



## JOIN US FOR BREAKFAST

THE RUNNING HORSES  
9 – 10 AM

Please book by the Tuesday before

## MEN'S BREAKFASTS THIRD SATURDAYS 15<sup>TH</sup> SEPTEMBER

Book with: Andy Diamond  
diamo1@hotmail.co.uk

## WOMEN'S BREAKFASTS FOURTH SATURDAYS 22<sup>ND</sup> SEPTEMBER

Book with: Stephanie Randall  
0773 6933 482  
srandall55@gmail.com

## Tea @3

Monday  
24<sup>th</sup> September

Host: Jennifer Louis  
Westhumble Place  
Westhumble Street  
RH5 6BT  
01306 883460  
ALL WELCOME  
TRANSPORT AVAILABLE

Teas@3 and both men's and women's breakfasts are open to everyone. You don't need to be a church-goer.



Children's Harvest Workshop is on Sunday 7<sup>th</sup> October  
see page 27 for details

# Parish Prayer Meetings

Christians believe in the power of prayer. This is because prayer is one of the tools God provides for us to communicate with Him, and because it is a gift that everyone is qualified to use. And quite incredibly, if we pray consistently from the heart, it is just amazing how many times we find God, in His great love for us personally, does indeed answer our prayers!

Praying together with other Christians has significant benefits, one of which is that it allows us to grow closer together as members of God's church here in Mickleham and Westhumble. Praying together as a group of believers helps bring the unity that Christ prayed to His Heavenly Father when He said ... *that they may be one as we are one...* It also has the benefit of allowing us to encourage and support one another, as we share common needs and struggles as well as times of celebration and joy.

Praying together is more powerful than any other type of prayer, because the 'power' in corporate prayer is in its ability to unify us around God's will, not to simply get things from God. Jesus is present whenever and however someone prays, alone or in a group, but group prayer brings this added dimension as the presence and power of the Holy Spirit is invited in.

So starting in September, there will be an exciting opportunity to pray together

in church. We will meet on the first Tuesday of each month at 7.30 p.m. for an hour, to talk, pray and listen to God, quietly reflecting in His presence. All are very welcome.

Our time together will be informal and you may wish to pray out loud, you may not. The evenings may well vary in format from month to month yet will always seek to create an environment where we can draw closer to God. Essentially praying together could increase our faith to believe even more in God for wonderful answers to prayer.

One powerful part of the Bible is written to a corporate body of people. In Jeremiah 29:11-13 we find these words, *For I know the plans I have for you, declares the Lord, plans to prosper you and not to harm you, plans to give you hope and a future. Then you will call upon me and come and pray to me, and I will listen to you. You will seek me and find me when you seek me with all your heart.* God is saying if all of us would seek Him, we will find the plans He has for us. If we want to see God's blessing in our parish, if we want to see Jesus's transforming power, the dynamic ministry of the Holy Spirit in our midst, then we need to pray together.

So do come and join us on first Tuesdays: 4<sup>th</sup> September, 2<sup>nd</sup> October, 6<sup>th</sup> November and 4<sup>th</sup> December, you will be most welcome.

Canon John

## Prayer Workshop

If you would find it helpful to learn more about prayer, then do join us for a Saturday Morning Workshop that will be taking place in church on Saturday 20<sup>th</sup> October from 10 am until 12 noon.

Subject areas will include definitions of prayer, different types and ways to pray, why Christians should pray, how to pray, address some of the difficulties we face in praying and consider some of the benefits of praying. There will also be resources available and some recommended reading.

So if you would like to find out more about prayer, or if you have ever felt you couldn't pray out loud, lead the intercessions in church or simply ask questions about prayer, this morning may prove a blessing to you.

Do please contact me in advance if you would like to attend, to enable appropriate preparation. I look forward to our time together.

Canon John



There had been a series of adverts in the magazine for the strawberry tea to whet our appetites. Lots of people had responded and tables were set out in a long marquee on the border by the village hall car park, protecting us from the sun on one of the days of the heatwave.

We had expected strawberries, but first we were served beautiful and delicious sandwiches fit for a royal garden party, followed by a variety of cupcakes. We all began to wish we had gone without lunch to do justice to the feast before us. Finally came the strawberries (and cream of course) and somehow everyone managed to find space for them. What a treat.

A competition to guess the number of sweets in a jar was won by Carole Hobb's grandson, Teddy. All this was prepared and served by lovely waitresses, waiters and other helpers too numerous to mention individually, masterminded by Alison Wood. Congratulations and thanks to all of them on a very successful event which raised £1,210 for St Michael's Church, Infant School and Community Nursery. Many thanks to Alison Wood and all her team for providing such a lovely and successful afternoon.

Charlotte Daruwalla



## Knitting Project

A third box of hats, gloves and scarves is almost full. If you would like to join our knitting project, please contact Anne Weaver. Information about the Mission to Seafarers and its works can be found in a basket at the back of the church.

# Strawberry Tea on 30<sup>th</sup> June

Photograph: Mary Flint



Teddy with his prize jar of sweets and his sister, Layla



## HARVEST SUPPER

29<sup>th</sup> September

7.30 pm Mickleham Village Hall

Fish and Chip Supper, Fruit Salad, Pay Bar, Piggy Racing, a Quiz and 'Speed' Pétanque Competition

Tickets: Adults £10 and Children (Under 12) £6

Available from: Anne Weaver 01306 883932 weaver\_anne@hotmail.com or Jo Brown 01372 375015

## Coffee Morning Friday 28<sup>th</sup> September – Chapel Farm, Westhumble

10 am – noon



WE ARE  
MACMILLAN  
CANCER SUPPORT

If you have not been before it would be wonderful to welcome you to Chapel Farm for a cup of tea/coffee and a bite to eat for a small donation. We have been so lucky with the weather in previous years and it has been delightful to sit in the gardens and catch up with friends old and new. There is also a wide selection of cakes to buy and take home.

Looking forward to seeing you on the 28<sup>th</sup> and thanks for your support for this great charity

Superb professional  
cleaning of carpets  
oriental rugs  
upholstery curtains  
and leather  
Guardsman  
anti-stain protection

- spot stain and odour removal
- leather cleaning specialists
- flame retarding
- dust mite reduction service
- all work fully insured & guaranteed

For a free no obligation quotation call today  
Freephone 0808 144 9071  
John Joannides 28 Bracken Close Bookham

**Safeclean**  
The furnishing care specialists from GUARDSMAN



*Pinehurst  
Rest Home*

We aim to provide an excellent service at  
competitive rates supporting emotional physical  
and social needs of our clients always respecting  
and protecting their status as adults.

- Residential and 24-hour daycare
- Excellent cuisine
- Facilities for disabled: medic bath / lift
- Home doctor in attendance
- Single & sharing rooms
- Convalescent & short stays
- Lounge with TV & piano
- Separate dining room
- Physiotherapist chiropodist & hairdresser
- Entertainment: theatre visits / parties  
& cabarets held on premises

National Trust Road Box Hill  
Mickleham Dorking Surrey RH5 6BY  
Telephone: 01306 889942 / 888253

*Dorking Decorators*  
PROFESSIONAL PAINTERS & DECORATORS

**40 Years Experience**  
All aspects of painting and decorating

**01306 640418**

[www.dorkingdecorators.co.uk](http://www.dorkingdecorators.co.uk)

Approved by Trading Standards & Checkatrade



**CHRIS HULME**

*Garden Machinery*

Service and repair of all makes and models of:

- Ride-on mowers • Rotary mowers • Cylinder mowers
- Chainsaws • Strimmers • Hedge cutters
- Rotavators • Blower vacs

Quality secondhand machinery

Collection and delivery service

The Barn Cowslip Lane Mickleham 01372 377757 / 07950 961606

• Quality Flowers • Personal Service • Customer Satisfaction •

**FLOWERS by ELAINE**

• Wedding Specialists •

- Qualified Florists • Fresh Flowers & Plants • Local Delivery •
- Varied Gift Selection • Corporate Functions • Special Occasions •
- Funeral Tribute Specialists • Interflora Worldwide •

66 High Street, Dorking, Surrey RH4 1AY  
T: 01306 883511 • E: fbe@btconnect.com  
[www.flowersbyelaine.co.uk](http://www.flowersbyelaine.co.uk)



**SIMON HOOPER** For all  
your decorating needs...

Professional friendly and speedy service at all times

Fully insured

Insurance work

Exterior painting

Interior decorating

Free quotes & advice

Oil & Water-based products

Commercial/Domestic work

Wallpaper hanging & removal

07947 135 376

0208 3978 962

[www.slhdecoratingservices.com](http://www.slhdecoratingservices.com)

**DÉJÀ VU**

**D**éjà Vu, or, Did we really watch that  
much television?

Well, the answer to the question is that  
yes, we obviously watched far more  
commercial television than we had  
been prepared to admit. What proof  
do we have?

This year's summer concert by  
Mickleham Choral Society was a  
musical quiz. Unusually there was  
not a published programme; that  
would have given the game away.  
The choir, soloists and their guest  
artistes, performed many pieces, not  
only from advertisements, but also  
films. *Moon River*, *Adiemus* and an  
excerpt from *Carmina Burana* were

among the featured pieces, together  
with instrumental pieces including  
*Air on a G String* and the theme from  
'Schindler's List'. The themes to 'Jaws'  
and 'The Good, the Bad and the Ugly'  
must surely have their own category,  
the former being accompanied by a  
large and menacing fin crossing the  
back row of the choir. There were  
featured duets from members of the  
choir and a surprise performance by  
Marosh Kulhavy and Kristina Ferkova,  
British and World Salsa champions,  
from Reigate. Special mention must be  
made of Juliet's tender performance  
of *As Time Goes By*. All this was ably  
compeered by Martin Cox who added

his own quick fire rounds in between the  
main sections. The audience were kept  
on their toes throughout the evening,  
but there were nibbles on the tables  
and a bar to keep them sustained. Of  
course, points were awarded for correct  
answers, and what do points mean?  
Prizes! There were packets of a well-  
known brand of crisps, aftershave and  
other delights as prizes plus hampers of  
summer delights to be won in the raffle.

The evening finished in spectacular  
fashion with a beautiful, deeply  
coloured sunset over Norbury Park, that  
was obviously meant for the occasion.

Anne Weaver



Can you translate this diagram  
into words? Say what you see.

**SYMPHON**

Answer on page 26

**Mickleham Choral Society  
Come & Sing**

Thursday 6<sup>th</sup> September 7.30 for 8 pm  
Mickleham Village Hall

MCS meets on Thursday evenings at 8 p.m. in Mickleham Village Hall. New  
members are always welcome – no audition is required

We do three concerts a year plus participate in the Leith Hill Musical Festival -  
this year's main work is Orff's fantastic *Carmina Burana*. Just come along for an  
evening to sing with us and see how you like it. Our first rehearsal of the new  
season is on Thursday 6<sup>th</sup> September. Music and refreshments will be provided and  
of course we hope you have such a wonderful time you will come back for more.

For more information, please go to [www.micklehamchoral.org.uk](http://www.micklehamchoral.org.uk)  
or contact our conductor, [juliethornby@yahoo.co.uk](mailto:juliethornby@yahoo.co.uk)

**Leatherhead Community Association**



Many interesting  
talks, visits and  
activities will take place  
in the Institute over the  
Autumn. There will be a

full programme over the Heritage Open  
Days weekend, 14<sup>th</sup>-16<sup>th</sup> September,  
with three talks, five exhibitions and  
two performances (on the Sunday).  
Please look in the special HOD brochure  
for all the details.

For full information on everything  
that happens in the Institute please  
call in where you can pick up the  
new Newsletter which gives you

all the information on the different  
programmes that will be running in  
the Autumn. Letherhead Institute is  
in the High Street by the Epsom Road  
traffic lights.

Membership of the Institute is only £5  
a year and most of the activities are  
free to members, but non-members  
are always welcome for a small charge.  
There is nearly always a cup of coffee  
or tea available in the library which is  
open every morning where you can  
borrow DVDs as well as books. Sarah,  
the administrator, is always very happy  
to answer any of your questions,

she is in the office every morning  
from 9.30-12.30. Please phone her  
on 01372 360508, or email at [lca2@btconnect.com](mailto:lca2@btconnect.com) or go to our website  
[www.leatherheadca.org.uk](http://www.leatherheadca.org.uk)

In addition to the LCA programme  
there is table tennis and snooker on  
Monday afternoons, two book clubs  
on Thursdays, and on Fridays you can  
play Scrabble or join in with the friendly  
Social Bridge Group which plays for two  
hours from 2 pm also on a Friday. In  
addition there are rooms for hire in the  
Institute, either for a single event or a  
course of classes.

# Introduction of Parking Charges In Norbury Park

Those of you who have recently visited any of the three car parks in Norbury Park will have noticed the parking machines which appeared at the end of July. Their introduction is one measure that Surrey Wildlife Trust in partnership with Surrey County Council is taking in order to raise revenue. Charges will be levied from 7 am until 9 pm at a rate of £1.30 per hour, rising at that hourly rate until a charge of £5 is made for over 3 hours. The machines are cashless and can be operated by card or mobile (Ringgo) or alternatively an annual pass can be purchased (currently £60). The scheme will be managed by District Enforcement who will issue tickets for those parked without paying. The money goes to SCC.

It is estimated that the annual income from car parks will raise £378,000 and this includes that from six car parks on Chobham Common, two at Whitmoor Common, one at Rodburgh and three at Wisley and Ockham Commons. SCC expect to raise around £3 million in 15 years. They stress that the money will be used for the management and protection of the countryside estate. There will, I am sure, be many regular users of Norbury Park, particularly regular dog walkers, who will not be happy about this decision. The consultation that was held beforehand suggested that a number of respondents would look for alternative parking places. Residents fear that

### Parking charges

Parking charges apply from 7am to 9pm. Please pay by phone. No overnight parking. No coaches or lorries.

Up to 1 hour	£1.30
Up to 2 hours	£2.60
Up to 3 hours	£3.90
Over 3 hours (Up to end of day)	£5.00
Minibus/horsebox (per visit)	£6.00

Blue Badge Holders  
No charge of displaying a valid blue badge.

Motorcycle  
50p charge

### Pay by mobile

Use the RingGo app or call 01483 343266

No need to display a ticket

- Users of this service will pay a 50p convenience fee
- For VAT receipts, please see [www.RingGo.co.uk](http://www.RingGo.co.uk)

Quote this location number  
**21708**

**RingGo**

CCTV is in operation  
Images are being recorded and monitored for the purposes of crime prevention and public safety. This scheme is controlled by Surrey Wildlife Trust.

For more information call 01483 795440

Notices in the Crabtree Lane car park

displacement parking has the potential to effectively block the narrow roads and lanes in the park, preventing free movement of cars and perhaps more importantly farm vehicles. Problems are unlikely to be dealt with efficiently or quickly as there are no longer any wardens on site. The decision to charge SWT members at the same rate as the general public also causes some disquiet as, unlike the National Trust, SWT members are being asked to pay the same charges. While we must all recognise that if we value the countryside on our doorstep we cannot expect it to be properly managed and conserved without financial cost, the support of members is an important asset that needs recognition, as does the fact that introducing car parking charges is unlikely to encourage the

Trust’s aims – to increase interest, knowledge and involvement in the countryside – and may well impact the detrimentally on visitor numbers. The Trust is moving closer towards the deadline agreed when it initially entered into partnership with the SCC – that it would aim to be self-financing by 2021 – and will be looking at new leisure activities to generate income. Among these is the proposal to set up camping and glamping sites in the area of Phoenix Field which I expect to be controversial with many lovers of Norbury Park. Planning proposals are due to be on the Mole Valley Planning website very shortly. Please do look at them and consider the implications. It will not be the only move towards the aim of making Norbury Park and other sites self-financing. Judy Kinloch

## Mickleham Parish Council

In January, Mole Valley District Council planners outlined to Mickleham Parish Councillors, the Westhumble Residents Association and members of the public, their future plans for housing development across the district. They did the same thing with every other Parish Council in Mole Valley – there was no suggestion that any sizeable development was planned for either Mickleham or Westhumble. In common with every other local authority across the land, MVDC is under pressure to build more houses and planners told the meeting that their preferred option was to make modest increases to rural villages – but not

every village – in the district. After considering the comments and views of the January meeting, MVDC now wants to update Mickleham Parish Council on its work, including any potential site allocations in the parish as well as any potential modification to, or addition of, a village boundary. Planners will address the next meeting of MPC to be held in the Ranmore Room at 7.30 pm on 12<sup>th</sup> September. MVDC say its intention is to work in partnership with local parish councils and village associations to incorporate as far as possible their aspirations and wishes for their communities, within the context of the wider planning

objectives of MVDC and the national planning framework. It stresses that at this stage the individual proposals are primarily for discussion purposes with local parish councils and village associations. They may be subject to modification depending on the views of parish councils, village associations and Council members, and for that reason are not necessarily proposals that will find their way into the draft Local Plan. Wider public consultation will take place once proposals have been agreed as part of the Preferred Options Local Plan in due course. Trevor Haylett Clerk

# Village Party

On Saturday 21<sup>st</sup> July, the brethren of Mickleham and Westhumble descended on Juniper Hall for their biennial shindig. This year’s theme was 'Post-war Celebrations', but there was no forties austerity here: as ever, everybody involved played a blinder. The guests were greeted with a glass of fizz — authentically served in champagne saucers rather than vulgar modern flutes — and by the mellifluous crooning of Chris Burton, his fantastic skills at the mike only overshadowed by the brim of his excellent hat. Modesty prevents your correspondent from devoting excessive column inches to the second act on the bill. Suffice to say that Poppy Parfitt, singing and accompanying herself on keyboard entertained us beautifully (and for her anxious parents looking to settle their nerves, the gin bar offered the perfect tonic — Fever-Tree, of course). Emily Heuvel and friends completed the

pre-dinner entertainment with some rousing a cappella folk songs. It is always a wonder to see the skill and attention to detail with which the marquee is decorated at these events. Truly, you would not find better, no matter what the occasion. Happily for us all, there was no ration-book restraint when it came to dinner. What a feat by the catering team to provide such high-end food for so many. And who would have thought that we Mickleham-and-Westhumbles would look so sensational on the dance floor? Huge thanks to 'Absolutely Vintage' for providing some perfect booty-shaking tunes. The Mickleham village party is not only an excuse for hedonism on massive scale. Its purpose is to raise funds for important parts of our community: the St Michael’s Nursery, St Michael’s Infant School, the church, the Juniper Hall FSC Kids Fund and the village

playground. Many fabulous prizes were donated for the evening’s grand auction, ably compèred by David Ireland. Occasionally battling to be heard over the boisterous sound of over 200 people having a rare old time, he demonstrated characteristic patience and encouraged the guests to unprecedented levels of generosity. In total, the evening raised around £17,000, to be divided among the community benefactors. Not all communities are fortunate enough to have events like this, and they do not just happen. This was the result of months of hard work by so many people. Massive thanks to the organising committee, to Simon Ward and his team at Juniper Hall, to the many generous donors and sponsors and to the huge number of volunteers without whom it simply could not have happened. Here’s counting down the days to the next one! Adam Parfitt





- Bespoke dress making
- Soft furnishings
- Clothing alterations
- Curtains
- Sewing lessons
- Roman Blinds

Contact Tracey: 07511 079441  
traceyssewingroom@gmail.com

**Treeline** Services Ltd.  
**YOUR LOCAL PROFESSIONAL  
TREE HEALTH CARE SPECIALISTS**

Felling, Pruning, Stump Removal, Planting, Logs,  
Woodchip, Air Spade Services, Consultancy

Call us on **01306 741800**  
office@treeline.co.uk • www.treeline.co.uk



## My Wishes... My Way Planning my big day



The meeting at the Westhumble Chapel on 24<sup>th</sup> July was most unusual: it was about the need to plan for what you want to happen to your body after you die.

Has this grabbed your attention? It should do as we learned how important it is that you set down what you would like to happen to your body when you depart this world. If you do not let people know, it creates difficulties for your nearest and dearest and allows an undertaker to provide all sorts of unnecessary and expensive services.

The speaker's talk was introduced by Westhumble's Jane Bellingham of the Brigitte Trust. The Trust provide support for people with life threatening illnesses.

Judith Dandy, a former social worker, who has now established Dandelion Farewells gave a surprisingly light-hearted talk using a list of matters which you need to consider such as:

- do you want your body to be cremated, buried or donated to science?
  - who you would like to organise everything? You do not have to use an undertaker
  - do you want to be embalmed? You do not have to be
  - what sort of coffin would you like? There are some very simple and low cost ones available
  - what sort of ceremony would you like to mark your departure?
  - what sort of entertainment would you like to be put on for the mourners?
- We also learned about how traditional undertakers ramp up the cost of funerals by doing unnecessary things unless they are given precise instructions on what is to be done when somebody dies.
- Have YOU let your family know your wishes about you would like to happen

when you die? If not, there's no time like the present...

If you would like a copy of 'My Wishes... My Way' which gives a full list of the questions you need to answer, please email or telephone the editor of the Mickleham Parish Magazine.

Many thanks to Roger Davis for arranging such an interesting and thought-provoking evening.

Ben Tatham

PS When my 97-year-old brother-in-law died we found that he had prepared what he called his 'exit agenda'. As well as his wishes for his funeral this included vital information for his family and executors, such as where to find a copy of his will, details of bank accounts, passwords etc as well as a list of people and organisations to be notified. So helpful.

## We Clean Ovens ...so you don't have to!

Call us today to have your cooking appliances sparkling, using our own eco friendly products.



- Range & Aga Specialists
- Ovens & Hobs
- Extractor Hoods
- Microwave Ovens
- Traditional Stoves



Call TODAY for **01306 302021**  
LOCAL Service ovenudorking.co.uk

## EDE BROS

REMOVALS • STORAGE • SHIPPING •

- Since 1926, Capel-based and family owned
- STRESS-FREE, local, national & worldwide
- Contact us for your FREE estimate...

**01306 711293**  
edebros.co.uk



Gill and Paula would like to warmly welcome you to Aspen Care offering assistance to enable you to live in the comfort of your own home with care and companionship.

- A happy alternative to a care home
- Cover while your family or carer takes a holiday
- Recuperation and rehabilitation following a hospital stay
- All aspects of personal care medication and meal prep
- Dementia care disability chronic & critical conditions end of life care
- Accompaniment to appointments

Call for a chat to discuss your requirements.

We look forward to hearing from you.

01737 354821 info@aspenliveincare.co.uk www.aspenliveincare.co.uk

## ALFA CHIMNEY SWEEPS

- Clean prompt work
- 30 years' experience
- Specialist advice for old/problem chimneys
- Weekday and weekend service

**01306 88287**  
**07704 478414**



**YOUR LOCAL FARM SHOP ON DENBIES WINE ESTATE**  
farm shop deli plant centre

FREE PARKING www.vgfarmshop.com 01306 880720

Open 7 days 9.30 am. to 5.30 pm

- Fresh fruit & veg – local & home grown • Great range of local cheese
- Fresh bread cakes croissants & pastries
- Cook ready meals; Bangers Galore sausages

LOCAL \* NATURAL \* ETHICAL

English Apples  
Ockley Food Fair  
22<sup>nd</sup> September noon-4 pm  
We stock Silent Pool gin

Please join us at Mickleham and Westhumble Horticultural Society's

# Summer Show

Saturday 1<sup>st</sup> September  
2.30 – 4.30 pm Mickleham Village Hall

An amazing display of locally grown flowers, fruit & veg and impressive produce

Stalls: Plants, Owls, Bees, Norbury cheese, Local potter, Botanical artist, Items for sale, Dr. Barnardo cards, Garden Shed.

Delicious teas  
Prizes presented by  
Rev David Ireland BEM



## Gardens Revived

A family-run gardening business

Specialising in all forms of garden maintenance plus extra treatments such as scarifying, weed spraying and more. We are friendly, professional and affordable – Excellent local recommendations  
**Andrew O'Donoghue 07939 619 537 www.gardensrevived.com**



## CRYPTIC DELICACIES

Here are some of last month's clues:

**25 Bonkers, bonkers, bonkers about the Queen, no, no, bonkers! (7)**

DEFINITION: Bonkers

SIGNAL WORDS: 3<sup>rd</sup> 'bonkers' = make anagram of 2<sup>nd</sup> 'bonkers', 'about' = put the letters around, 1<sup>st</sup> 'no' = lose the letters of the 2<sup>nd</sup> 'no', 4<sup>th</sup> 'bonkers' = the letters of the 2<sup>nd</sup> 'no' are mixed up (i.e. in 'bonkers' they appear as 'on')

CRYPTIC PART DECIPHERED: anagram of: BONKERS about the Queen (= ER for Elizabeth Regina) without NO mixed up. So an anagram of BK(ER)ERS

ANSWER = BERSERK

**1 Yrdnual could be water fairy, perhaps (7-2,6)**

DEFINITION: fairy, perhaps

SIGNAL WORDS: 'could be' and 'perhaps' both signal that the words they refer to are examples of a category of things i.e. 'water' is a liquid, and 'fairy' is a washing up liquid

CRYPTIC PART DECIPHERED: If you turn 'Yrdnual' upside-down you get 'laundry' so 'Yrdnual' is WASHING UP, then 'water' is a type of LIQUID

ANSWER = WASHING-UP LIQUID

**8 To get warmer, Tel. Clerk 7-26 (8,7)**

DEFINITION: warmer (as in something that makes you warm)

SIGNAL WORDS: The numbers 7 and 26 refer to the answers of those clues in the crossword, so 7 = CABINET and 26 = DISENTANGLEMENT, and 'diseentanglement' is a pointer to an anagram

CRYPTIC PART DECIPHERED: anagram of TEL CLERK CABINET

ANSWER = ELECTRIC BLANKET

**17 Works out 12 + 19 + 26 as an example (7)**

DEFINITION: 'works out' & '12 + 19 + 26 as an example' (double definition)

ANSWER = FIGURES

*This is an example of a clue that looks more complicated than it is – so you might look at the answers to clues*

*12, 19 & 26 and see REMBRANDT UKULELE DISENTANGLEMENT and then go 'what?!' but actually the first part of the clue is a synonym for FIGURES and the numbers are just examples of FIGURES. One of the important things with setting crosswords is using a variety of types of clue so that the solver is kept guessing as to what approach to take, and sometimes the temptation will be to think things are more complicated than they actually are. On its own it is not a great clue but when it is in amongst a lot of my more usual convoluted nonsense, it makes it harder to figure out.*

**14 I never start to assume - not as hard as you might say in this state (9)**

DEFINITION: state (as in 'a nation state')

SIGNAL WORDS: 'start' = take first letter of, 'as you might say' = sounds like

CRYPTIC PART DECIPHERED: I + ('Never' start = N) + ('assume' = DON, as in 'don/assume a disguise') + ('not as hard' = 'easier', sounds like ESIA)

ANSWER = INDONESIA

**24 A French car lets you see the whole picture from inside a tube (7)**

DEFINITION: lets you see the whole picture from inside a tube

CRYPTIC PART DECIPHERED: 'A' in French = UN, 'car' = ROLLS (short for Rolls Royce)

ANSWER = UNROLLS

**6 The ambassador is not in the next in line of them (5)**

DEFINITION: of them

SIGNAL WORDS: 'not in' = remove letters from the following

CRYPTIC PART DECIPHERED: 'The ambassador' = H.E. (as in His/Her Excellency), 'the next in line' = THE HEIR, remove HE to get the answer

ANSWER = THEIR

I hope that helps, or maybe it just proves I am beyond help. As always, any responses or queries will be happily received at [andrewt@andrewtatham.co.uk](mailto:andrewt@andrewtatham.co.uk)

Andrew Tatham

# PRUDENTIAL RIDE LONDON

## Cycle Race 27th July

Eric Flint and I made it round a very wet and windy Ride 100. The rain started five miles in and finished when I was on mile 95. In between we had squalls, driving rain, water flowing down the hills, and pretty much everything that the English summer can throw at you.

The organisation was fantastic. I have been critical of the Ride 100 organisers in the past, but they were brilliant. There were signs and marshals everywhere. I gather they closed Box Hill and Leith Hill later in the day because of accidents, but that was after I had been round them. Eric was a bit later than me and got diverted round both hills. Most riders were sensible, but there were a few idiots, which there always are and always will be. There have been reports of a cyclist hitting a marshal in Leatherhead and not stopping. If true that is disappointing, but unsurprising to those of us who live under Box Hill and see the way some cyclists behave.

Even the crowds were out in force despite the weather. The high spot for me was the bottom of Box Hill with Kate and Martin Cox singing and playing every song you can think of with a bicycle reference (including Queen, Melanie and Katie Melua) - and a welcome change of clothes provided by Annie. Thanks also Kate and Martin for the post-race BBQ and concert!

I would like to thank all my donors for supporting me and Alzheimer's. I am not ashamed to say that I burst into tears at the finish. It wasn't in all honesty a fun day, but Eric and I do have a sense of achievement to have got around the 100-mile course in those conditions. Our times were ...slow.

Eric was supporting St Raphael's Hospice in Sutton and would also like to thank all the friends and family that donated. He said he was completely overwhelmed by their generosity.

Thanks all. That really is my last time on the Ride 100. You couldn't follow a day like that. Thanks to all for their



Top: NT Ranger Rob Hewer dancing to Martin & Kate Cox's music on the bend leading to the Zig Zag during a gap between cyclists. Middle left: Will Dennis; Right: Eric Flint Bottom right: Eric and his fan club; Right: Sarah Hammond and her granddaughter, Layla, waiting for daughter-in-law, Sarah. Photo sums up how wet it was.

extraordinary generosity in aid of the Alzheimer's Society. Will Dennis

PS For those of you not aware, my mother-in-law died of dementia and it was very sad to watch her decline over a fairly short period of time, and

with medical support which appeared to be well-intentioned but largely worthless.

If anyone still wants to donate to the Alzheimer's Society the link is: <https://www.justgiving.com/fundraising/willdennis>

**Keep the date: Westhumble Bonfire and Fireworks – Saturday 3<sup>rd</sup> November**

## Not feeling as well as you'd like?

Counselling • Mind & Body Healing  
Reiki Treatments • Shamanic Healing  
Meditation • Courses & Workshops

"I have been on a life-changing journey the benefits of which will be with me forever." ARJ Surrey



Call Judith Cobby  
on 01306 882229  
or 07790 614448

[www.healing-inspiration.co.uk](http://www.healing-inspiration.co.uk)

BLINDS • CURTAINS  
INTERIOR FURNISHING & WALLPAPER



## SAINT PAULS WORKROOMS

84 Falkland Road, Dorking RH4 3AD | T: 01306 740201  
[www.saintpaulsworkrooms.co.uk](http://www.saintpaulsworkrooms.co.uk)

## Ballroom Dancing Latin American Dancing Professional Training [IDTA]

Private lessons only  
Sunday & Monday evenings  
6 - 10 p.m.

At Mickleham Village Hall  
Dell Close Mickleham Surrey RH5 6EE  
07901 742 887  
[vmvdancing@gmail.com](mailto:vmvdancing@gmail.com)



IDTA Qualified Teacher

## STEVE & TIM LANGLEY

*Experienced craftsmen*

ANTIQUE RESTORATION  
CABINET MAKING  
FRENCH POLISHING

Free estimates collection & delivery  
01372 457700  
07960 486455 07847 769517

## Road and Competition Engineering Ltd



Specialists in the  
maintenance and  
restoration of  
historic road and  
race cars

From general servicing performance  
modifications engine/gearbox rebuilds  
to full restorations. We also offer vehicle  
storage. Our workshop is based in Charlwood



Jamie Mason 07840 698452 [www.raceltld.com](http://www.raceltld.com)

## In Pain? We Can Help Dorking Chiropractic Clinic

Dr Graham M Allen & Associates

- Back Pain and Sciatica
- Hip, Knee, Foot and Ankle Pain
- Neck Shoulder and Arm Pain
- Headaches and Migraine
- Sports/Occupational injuries
- RSI/Carpal Tunnel
- Back Pain in Pregnancy
- Arthritic Pain
- Trapped Nerves
- Joint Problems

01306 887793  
316 High Street Dorking RH4 1QX  
[www.dorkingchiropractic.co.uk](http://www.dorkingchiropractic.co.uk)

HSA

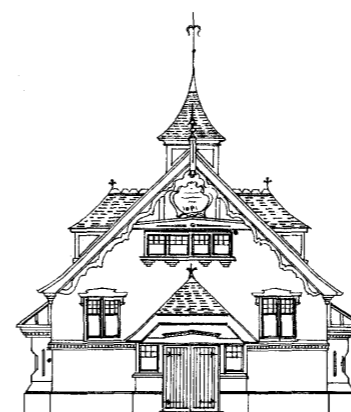
Registered by the General Chiropractic Council • Member of the British Chiropractic Association

## DORI VANA PLUMBING YOUR LOCAL PLUMBER

EXPERIENCED RELIABLE  
AND PROFESSIONAL  
From changing washers to changing bathrooms

CALL DORI  
07977 220465 / 01306 887282

Proud members of  
**Checkatrade.com**  
Where reputation matters

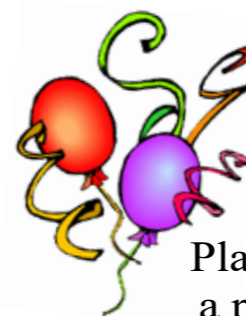


## Mickleham Village Hall available for hire

Hall bookings  
Table & chair hire

Deanna Darnell  
01372 388474  
07790 941 601

[d\\_darnell\\_MVH@hotmail.co.uk](mailto:d_darnell_MVH@hotmail.co.uk)  
[www.surreycommunity.info/  
micklehamvillagehall](http://www.surreycommunity.info/micklehamvillagehall)



Planning  
a party?

Equipment  
available for hire

China ~ Cutlery  
Electric urn

Equipment hire  
Mary Banfield  
01372 373912  
[mgbbmw@aol.com](mailto:mgbbmw@aol.com)

## Community Directory

Box Hill (National Trust)  
Head Ranger – Mark Dawson 01306 885502  
[mark.dawson@nationaltrust.org.uk](mailto:mark.dawson@nationaltrust.org.uk)  
Friends of Box Hill – Chair Lyn Richards 01737 842889  
[lyn@mra.uk.net](mailto:lyn@mra.uk.net)

Box Hill School  
Headmaster – Cory Lowde 01372 374814  
[hmsec@boxhillschool.com](mailto:hmsec@boxhillschool.com)

Dorking Cricket Club  
Chairman – David Spackman 07831 859232  
[david@theimagecompany.co.uk](mailto:david@theimagecompany.co.uk)

Dorking Group of Artists  
Exhibition Secretary – Patricia Booth 01737 24491  
[patriciabooth100@gmail.com](mailto:patriciabooth100@gmail.com)

Dorking Lawn Tennis & Squash Club  
Jim Cattermole 01306 883629  
[jim.cattermole@uwclub.net](mailto:jim.cattermole@uwclub.net)

Dorking Rugby Club  
Jim Evans 07789176417  
[jim@flintcottage.net](mailto:jim@flintcottage.net)

The Garden Shed  
Pauline Davis 07759 646 353  
[paulinemdavis@gmail.com](mailto:paulinemdavis@gmail.com)  
Susie Gowenlock 07768 923 088  
[susiegowenlock@gmail.com](mailto:susiegowenlock@gmail.com)

Juniper Hall Field Centre 01306 734501  
[enquiries.jh@field-studies-council.org](mailto:enquiries.jh@field-studies-council.org)  
Head of Centre – Simon Ward [Simon.lr@field-studies-council.org](mailto:Simon.lr@field-studies-council.org)  
Friends of Juniper Hall – Suzy Hughes 01372 275393  
[suzyhughes@businessetiquetteint.com](mailto:suzyhughes@businessetiquetteint.com)

Mickleham Children's Playground Association  
Secretary – Sarah Parfitt 07767 891772  
[sarah@sarahparfitt.com](mailto:sarah@sarahparfitt.com)

Mickleham Choral Society  
THURSDAYS 8 - 10 PM – MICKLEHAM VILLAGE HALL  
Conductor – Juliet Hornby 01372 373106  
Secretary – Anne Weaver 01306 883932  
[www.micklehamchoral.org.uk](http://www.micklehamchoral.org.uk) [weaver\\_anne@hotmail.com](mailto:weaver_anne@hotmail.com)

Mickleham Old Box Hillians Football Club  
Secretary – John Atewell 01372 374745

Mickleham Parish Council  
SEE WEBSITE FOR MEETING DATES [www.micklehampc.org.uk](http://www.micklehampc.org.uk)  
Chairman – Rev'd David Ireland 01372 379381  
[rev.ireland43@btinternet.com](mailto:rev.ireland43@btinternet.com)  
[trevor.haylett9@gmail.com](mailto:trevor.haylett9@gmail.com)

Parish Clerk – Trevor Haylett  
Mickleham Parish Magazine  
Editor – Sue Tatham 01306 882547  
[editor@micklehammag.co.uk](mailto:editor@micklehammag.co.uk)

Co-Editor – Charlotte Daruwalla 01306 884025  
[editor@micklehammag.co.uk](mailto:editor@micklehammag.co.uk)  
Administrator – Fiona Roberts-Miller 01306 740851  
[admin@micklehammag.co.uk](mailto:admin@micklehammag.co.uk)

Mickleham Village Hall  
Chairman – Ben Tatham 01306 882547  
[ben@thetathamss.co.uk](mailto:ben@thetathamss.co.uk)  
Bookings Manager – Deanna Darnell 01372 388474  
07790 941601  
[d\\_darnell\\_MVH@tmail.co.uk](mailto:d_darnell_MVH@tmail.co.uk)

## ST MICHAEL'S CHURCH

*within the United Benefice  
of Leatherhead and Mickleham*

### INCUMBENT

The Reverend Graham Osborne 01372 372313

### PARISH PRIEST

The Reverend Canon John Harkin 01372 378335

harkin12@btinternet.com

Duty days primarily Sunday, Monday and Tuesday

### CHURCHWARDENS

John Banfield 01372 373912  
banfieldjohn@aol.com

Anne Weaver 01306 883932  
weaver\_anne@hotmail.com

### PARISH ADMINISTRATOR

Alison Wood 01372 376443  
admin@micklehamchurch.org.uk

### PCC SECRETARY

Elizabeth Moughton 01306 883040  
eliz.moughton@btinternet.com

### TREASURER

Richard Siberry 01372 375303  
siberrman@btinternet.com

### WEDDINGS CO-ORDINATOR

Jane Denny 01306 883107  
carsondenny@aol.com

### BAPTISMS CO-ORDINATOR

Vickie Leney 01306 884054  
vleney100@gmail.com

### FUNERALS ORGANISER

Brian Wilcox 01372 374730  
dbrianwilcox@btinternet.com

### WEBSITE MANAGER

Sarah Ward 01372 383350  
sarwar\_63@hotmail.com

[www.micklehamchurch.org.uk](http://www.micklehamchurch.org.uk)

*For information about services for other  
denominations see website pages.  
Search on 'Churches Together Mole Valley'*

## REGISTERS

### WEDDINGS

7<sup>th</sup> July Olivia Linnea Lowes and Alexander  
Edward Lloyd Thomson  
14<sup>th</sup> July Laura-Jade Marie Holloway and  
Samuel David Richards  
21<sup>st</sup> July Charlotte Louise Brooks and  
Dean Michael Lucern  
4<sup>th</sup> August Danielle Maria Bowie and  
Michael Wayne Bubb  
18<sup>th</sup> August Sarah Jennifer Boreham and  
Harry Anthony Noble

### SERVICE OF THANKSGIVING AND BURIAL IN THE CHURCHYARD

14<sup>th</sup> August Eileen Kathleen Hobbs

## Calendar of Events

### SEPTEMBER

1	Saturday	2.30 pm	Village Show. Village hall
2	SUNDAY Trinity 14	8 am 10. am	Holy Communion Family service
3	Monday	8 pm	PCC meeting. Ranmore Room
4	Tuesday	7.30 pm	Prayer Meeting
6	Thursday	7.30 for 8 pm	Start of Autumn Term at St Michael's School Mickleham Choral's first rehearsal & Come and Sing
8	Saturday	1.45 pm	Wedding in St Michael's
9	SUNDAY Trinity 15	8 am 10 am	Holy Communion Holy Communion
<i>Copy deadline for October Parish Magazine</i>			
12	Wednesday	7.30 pm	Mickleham PC meeting with MVDC Planners. Ranmore Room
15	Saturday	9. am	Men's Breakfast at The Running Horses
15	SUNDAY Trinity 16	8 am 10. am	Holy Communion Holy Communion
22	Saturday	9 am 10.30 am	Women's Breakfast at The Running Horses Garden Shed visit to Ryman's and West Dean Gardens
23	SUNDAY Trinity 17	8 am 10 am	Holy Communion Westhumble Chapel Holy Communion
24	Monday	3 pm	Tea@3 at Westhumble Place
28	Friday	10 am-noon	MacMillan Coffee Morning at Chapel Farm
29	Saturday	7.30 pm	Harvest Supper with Piggy Racing. Village hall
30	SUNDAY Trinity 18	8 am 10 am	Holy Communion Holy Communion

### DATES FOR YOUR DIARY

Sunday 7<sup>th</sup> October Harvest Festival & Children's Workshop  
Saturday 20<sup>th</sup> October Prayer Workshop  
22<sup>nd</sup>-26<sup>th</sup> October Half-term at St Michael's School  
Saturday 3<sup>rd</sup> November Westhumble Bonfire & Fireworks

## MEMBERS OF THE PAROCHIAL CHURCH COUNCIL

James Aarvold John Banfield Mark Day  
Andrew Diamond Jenny Hudlass  
Elizabeth Moughton Frances Presley James Riches  
Richard Siberry Amanda Wadsworth Simon Ward  
Amy Ward Paul Wates Anne Weaver

## TOOLS WITH A MISSION (TWAM)

[www.twam.co.uk](http://www.twam.co.uk)

TWAM is a Christian charity committed to the recycling and refurbishment of tools which then can provide a means for poorer people in developing countries to learn a trade and be able to support themselves and their families. With this practical help thousands of young men and women have benefited from the skills they have learned. They need:

- garden forks & spades saws hammers drills pickaxes etc
- sewing or knitting related tools thread zips scissors
- embroidery items fabric and sewing machines
- wool and knitting needles patterns
- portable typewriters printers and laptops

If you have any of the above which could be used to help someone to have a better quality of life and hope for the future please contact Hilda Burden on 01737 842516.

## HELPING HANDS

INCLUDING FOOD FOR FRIENDS

*A service for all residents of Mickleham and Westhumble*

Examples of services we offer:

- Transport for visits to doctor's surgery or hospital
- Essential shopping / collection of prescriptions
- Changing library books
- Small tasks: eg changing fuses altering clocks etc
- Dog walking / care of pets
- Visiting / befriending
- Home-cooked meals for local families going through difficult times

Requests to Mary Banfield 01372 373912  
or leave a message on answerphone.

Callers will be contacted within 24 hours

*More helpers needed – please contact  
Mary if you can spare some time.*

# Community Directory

Continued from page 13

MICKLEHAM & WESTHUMBLE BOOK CLUB  
Bernice Bailey

01306 741310  
bpbailey\_uk@yahoo.co.uk

MICKLEHAM & WESTHUMBLE BADMINTON CLUB

Membership Secretary Sarah Blake sarah.blake1@uk.nestle.com

MICKLEHAM & WESTHUMBLE CRICKET CLUB

Team Secretary – Will Dennis 01372 372684  
will@micklehamhallfarm.co.uk

MICKLEHAM & WESTHUMBLE HORTICULTURAL SOCIETY

Chairman – David Kennington 01372 362309  
www.surreycommunity.info/mwhs davidkennington144@gmail.com

MICKLEHAM AND WESTHUMBLE LOCAL HISTORY GROUP

Chairman – Ben Tatham 01306 882547  
ben@thetathamss.co.uk  
www.hugofox.com/community/mickleham-westhumble-local-history-group-13483/

MOLE VALLEY DISTRICT COUNCIL

Councillor – Duncan Irvine 01306 885001  
07738 384287  
duncan.irvine@molevalley.gov.uk

THE ARTS SOCIETIES (FORMERLY NADFAS)

Betchworth – Mary Venning 01306 883301  
Dorking – Sue Tatham 01306 882547  
Leatherhead – Sarah Sheridan 01306 883699

ST MICHAEL'S CHURCH OF ENGLAND (A) INFANT SCHOOL 01372 373717  
info@stmichaels-dorking.surrey.sch.uk

Friends of St Michael's School

Co-chairs Danielle Morrison and Debbie Turner  
friendsofstmichaels2017@gmail.com

ST MICHAEL'S COMMUNITY NURSERY

WEEKDAY MORNINGS – MICKLEHAM VILLAGE HALL  
Supervisor – Hilary Budd 01372 361021  
stmichaelsnursery@btinternet.com

SURREY COUNTY COUNCIL

Councillor – Hazel Watson 03456 009 009  
01306 880120  
hva.watson@btinternet.com

SURREY WILDLIFE TRUST

01483 795440  
info@surreywt.org.uk

WESTHUMBLE RESIDENTS ASSOCIATION

Chairman – Holly McLaren 07887 660129  
westhumble.residents@gmail.com

WESTHUMBLE NEIGHBOURHOOD WATCH

Lead Co-ordinator – David Allbeury 07860 227451  
westhumble.neighbourhood.watch@gmail.com

## ADDITIONAL CONTACT INFORMATION

CITIZENS ADVICE

Dorking – Lyons Court 0844 4111 444  
Leatherhead – Swan Mews High Street 0844 4111 444

CRIMESTOPPERS

0800 555 111

POLICE Non-emergencies

101

(often quicker to make online report) <https://report.police.uk/>

Neighbourhood Specialist Team – Dorking Rural East

PCSO 8761 Dave Sadler To contact a member of the

PCSO 15904 Sophia Manelfi team call 101 and your call

PC 2799 Sue Gargini will be put through.

General enquiries molevalley@surrey.pnn.police.uk

# Babysitting by local teenagers

Those listed below are at least  
14 years old..

Freya Pearce 01306 884724

Maisy Presley 01306 882484

Issy Nash\* 01306 742762

Amber Miller 01306 883659

Patrick Moran 01306 640043

Katie Light 01306 881953

Ellie Kim 07773 395575

Philomena Ala 01306 885767

Delphine Ala 01306 885767

Chelsea Edwards 01306 884133

Rory Lee \*\*07973 360 950

Annabelle Prosser  
01306 640643

\* Holidays only

\*\* Parent's mobile number

If you would like to add your  
name to this list please get in  
touch with

Fiona Roberts-Miller  
admin@micklehammag.co.uk  
No Charge

# Advertising in the Parish Magazine

Please contact

Fiona Roberts-Miller

admin@micklehammag.co.uk

Small ads: a nominal fee is  
charged for ads where items or  
services are bought or sold.

We have been advised to print  
the following reminder:

We cannot guarantee the  
quality of the goods and  
services offered by our  
advertisers.



# Margaret Gillian Turner 1953 – 2018

Margaret passed away peacefully at home on 26<sup>th</sup> June after a ten-year battle against metastatic renal cancer. Her last three years were dominated by the illness but she fought back after each of the three major surgical procedures and after a six month near-fatal reaction to the immunotherapy treatment trialled at The Royal Marsden, a treatment that initially gave her and her family so much hope.

Margaret was born on 29<sup>th</sup> June 1953 in Brighton and was the elder of two sisters. It was during her childhood that she obtained her love for the Downs. In October 1971 she commenced undergraduate studies in French at the University of Warwick and soon after commencement met a final year physics undergraduate, Grahame, with whom she lived for the rest of her life. They married in September 1977 and moved into the house in Westhumble that was their home when she died. Margaret leaves three children: Briony, Charlotte and William, and a granddaughter, Eleanor.

Although she graduated with a degree in French, Margaret taught English language and literature at secondary level for most of her working life up until her full retirement in May 2015. She taught successively at Howard of Effingham; at Parsons Mead in Ashted before its closure; and, latterly, at St Catherine's in Twickenham as head of department. Many of her former pupils still live in the area and have families of their own.

Photograph: Fiona Taylor



Congratulations to Mary Dennis and Simon Taylor for passing their 1st Stage Beekeeping examinations.

Margaret was a keen gardener and had extensive knowledge of plants, even knowing the Latin names for them. She had a voracious appetite for literature and enjoyed theatre and ballet. Although having no musical skills herself, she coached all three of the children in their early years to play the violin following the Suzuki method and they each progressed to take the grade examinations.

All three of her children helped Grahame care for Margaret during the ten weeks following the compromise of her mobility by the disease – a testament to the regard and respect for her that endures within them. At her request, her ashes are scattered in the garden that she so loved.

Grahame, Briony, Charlotte and William wish to express their gratitude to Lucy and Monica of the Steady Care agency, who came twice daily to assist and who treated Margaret with such kindness and respect during that very difficult final period. They would also like to express their gratitude to the staff of St. Catherine's Hospice (Crawley) who helped by providing equipment and by devising a medication plan that relieved Margaret of most of the crippling pain that she would have otherwise suffered and dealt with her other medical needs. A special word of thanks is also due to Dr Monella and Dr Tomei who did whatever that they could to help in Margaret's final weeks.

Graham Turner

We send our sympathy to Graham and his family at this sad time.



# Rustom Retires

Many, many thanks and very best wishes on his retirement to Rustom Daruwalla, who, ably assisted by Charlotte, has distributed bags of parish magazine to deliverers in Westhumble for longer than the Editor can remember. Many thanks too to John Tacon and Ann Freckleton of Burney Road who have agreed to take over Rustom's round.

# Community News

Farewell to:

• Clive Powell who has moved from School Lane to Hove.

• Alan & Maddy Roberts have moved from Chapel Lane to Kingswood

• Colin Wylde of Burney Road who has moved to the Cotswolds.

Welcome to:

• Julian and Francesca Simpson who have moved into School Lane from Epsom

• Simon & Suzie Owen with Gracie (11) & Ella (7) who have moved to Chapel Lane from Putney

Deepest sympathy to Geoffrey Hobbs and family following the death of Geoffrey's mother, Eileen Hobbs, aged 92. Following a service of thanksgiving for her life on 14<sup>th</sup> August in St Michael's, Eileen was buried in the new churchyard. The land for the new churchyard was donated to St Michael's by Geoffrey and his wife, Carole Hobbs of Eastfield Cottage.

Congratulations to:

• Olivia Lowes and Alexander Lloyd Thomson who were married in St Michael's on 7<sup>th</sup> July. Olivia is the middle daughter of Juliet and John Lowes of Old London Road.

• Samuel Richards and Laura-Jade Holloway who were married in St Michael's on 14<sup>th</sup> July. Sam is the son of Nick and Jan Richards of Old London Road.

# Double Celebration

Photograph: Angela Gilchrist



Congratulation and very best wishes to Sir Hugh and Lady Cubitt who recently celebrated their Diamond Wedding Anniversary as well as Hugh's 90<sup>th</sup> birthday.

## Summer Weddings at St Michael's



Photograph: Deanna Darnell



Photograph: Jan Richards

Left: Newly-wed Mr and Mrs Lloyd Thomson chat with Olivia's grandmother, Stella Hornby in the churchyard. Right: Sam and Laura Richards

## Running Horses v King William IV 20/20 Cricket Match 17<sup>th</sup> July

In the words of President Franklin D. Roosevelt: Yesterday, July 17<sup>th</sup> 2018, a date which will live in infamy, the King William was suddenly and deliberately beaten by the batting and bowling forces of the Running Horses.

This was the day that saw the King William IV and the Running Horses embark on the fifth instalment of the annual battle of wits betwixt the two. As usual the struggle took place in the delightful grounds of Box Hill School on a good wicket with a quick outfield and short boundaries. Every player was required to bowl two overs and batsmen had to retire upon reaching 25 runs ensuring every person was fully involved in the day. Only six-ball overs were to be played, with a two-run penalty given for any wides or no balls, to make sure the match finished before the moon climbed into the sky. This last rule played no small part in the game.

In front of an ever-growing crowd the Running Horses won the toss and chose to field first. The King William XI started well with the opening pair of Julian Ayton and Elliot Godwin taking them quickly to 46 runs before the fall of the 1<sup>st</sup> wicket in the 4<sup>th</sup> over. Sam Godwin, Kevin Walker and Justin Turner continued the good work moving the King William on to 123 for 2. This good work preceded a mid-order wobble, but Sam Fenwick and Harry Godwin's handy quick runs stopped the rot. Finally Anya Ayton smashed 4 runs to show this reporter who is the cricketer in the family. Twelfth man extras contributed a healthy 30 runs to the King William score line which finished at 180 runs.

The Running Horses XI also started well and matched the King William in terms of the run rate, the first wicket falling in the seventh over at 72 runs. Good batting from Giles Pritchett and Will Varley saw both of the retire on 25 and 26 respectively and John Mark Jones's welcome 24. The Running Horses had reached 151 runs at the end of the 16<sup>th</sup> over. How had the score gotten that high so quickly? Post-match analysis was to solve the mystery. Twelfth man was contributing heavily through loose bowling to the score and ended up with a massive 50 runs! Finally David Kennington's 10 and an epic 22 not out from Eric 'never played cricket before' Guegan saw the Running Horses reach

the total for victory with 4 balls to spare.

Special thanks to all those people who help this match go ahead. Mark Day and Graham Brown for their umpiring skills, Frances Presley for keeping the scores on the doors and Anne, Eamonn and the King William staff for looking after us all so well during and after the match. Thank you to all of the supporters also who made the evening the success it was and helping to raise £220 for the Mickleham Community Nursery, our chosen beneficiary.

Well done to the Running Horses on their victory taking the balance to 4-1 in their favour. Watch this space for next year. Greg Ayton



Back row (from left): Lyall Davenport, Justin Turner, John Mark Jones, Sam Godwin, Billy Chadwick, Will Varley, David Kennington, Robin Taylor, Kevin Walker, Julian Ayton, Leigh Williams, Graham Brown (Ump), Mark Day (Ump) Front row (from left): Eric Guegan, Giles Pritchett, Sam Fenwick, Elliot Godwin, Will Perks, Steve Jebson, Charlie Richards, Greg Ayton

## MCC v Dennis Destroyers Annual Charity Match 24<sup>th</sup> June

The day dawned sunny and bright and England popped six past the hapless Panamanians, setting the scene for the annual Dennis Destroyers match. Previous winning margins in this fixture have been wide, with MCC winning two years ago by seven wickets and the Destroyers winning last year by a similar margin. However oppo skipper Will Dennis's main ringers from last year were all unavailable with a variety of implausible excuses, so he turned up with a very diverse team, including four young ladies whose cricketing abilities were an unknown quantity.

Mickleham won the toss and elected to bat in a game reduced to 20/20 by the footie, batsmen retiring at 25. Nick Presley fell 79 short of his previous innings for MCC, being done by a very nasty delivery from Dave Dennis which he popped into the safe hands of Nick Dennis at slip. Will Perks was bowled by a jaffa (pitched middle, hit top of off stump) by Connie Blake, for which both were duly awarded Malibus. The innings was stabilized by Fred Evans (28) and Charlie Richards (26). Contributions from Jack Dowd (23) and Will Varley (17) took MCC to a very

a fine start by father and son combo Julian Mercer (29) and Tom Mercer (25). Alec (LNU) popped up with a quickfire 27, but when Dave Dennis was brilliantly caught one-handed for 19 by MCC skipper-for-the-day Charlie Richards off Tania Woodall's first ball for MCC, the Destroyers still needed over 30. Thus the stage was set for the definitive captain's innings by Will Dennis (27) accompanied by a succession of young ladies. Will likes to say he scored with all four of them but actually the last one didn't make it to the crease, as the Destroyers got home with exactly one over and six wickets to spare. History will record that Katie Mercer was bowled by a disgracefully fast yorker from Jack, for which he was awarded a Malibu. Pick of the bowlers was Charlie Richards (1/13).

Will Dennis

This year we are fundraising for the Alzheimer's Society via Will's entry in the Ride 100. Donations welcome here. <https://www.justgiving.com/fundraising/willdennis>



Post match celebration at the Runners

respectable 150/6 off 20 overs. Pick of the bowlers were Connie (1/6), Julian Mercer (1/12) and Ralph (LNU) 2/18.

An excellent tea provided by Annie Dennis and various Dennis relations, plus some ace cakes from Ian Woodall, set the scene for the Destroyers' innings, which got off to

## Propagation Talk for Garden Shed

On 16<sup>th</sup> July Garden Shed members had a very interesting presentation on 'Propagation, Plants for Free' given by Christina Clowser, a horticultural student at Kew.

Propagation was started by the Romans and various techniques developed over

time. There are four main propagation methods: vegetative, stem, bulb, and leaf. Christina gave us examples of which method was suitable for various well-known plants.

She then outlined the equipment that is needed: Sharp knife, chopping board,

secateurs, hormone rooting powder, dibber, labels and a mixture of soil and grit or vermiculite. You also need a bottle of surface cleaner to ensure your tools are as clean as possible. This will help to avoid cross-contamination of your cuttings. Simple and inexpensive.

Christina then demonstrated how to take cuttings of rosemary, bulbs and leaves and gave us bits of helpful advice:

- root cuttings should be done when the plant is dormant
- eaf propagation is suitable for camelia plants
- this is the time of year for spring bulb propagation
- always collect your plant material first thing in the morning and take cutting as soon as possible

We really enjoyed this informative talk and were inspired to practice at home. Our next talk 'Wildlife in the Garden' will be held at The Stepping Stones in November. Details of our September Gardens Visit on left. There will be a Fungi Walk in October.

Susie Gowenlock



Please join us on our visit to  
**Ryman's and West Dean Gardens**

near Chichester, Sussex

**Saturday 22<sup>nd</sup> September**

Starting at 10.30 am at Ryman's

Ryman's is a private garden, owned by Mr and Mrs Gayford where walled and other gardens surround a lovely 15<sup>th</sup> C stone house (not open). There are bulbs, flowering shrubs, roses, ponds and potager. Also, many unusual and rare trees and shrubs. In late summer the garden is ablaze with dahlias, sedums, late roses and Japanese anemones.

West Dean Gardens is also near Chichester. Visitors can explore a wide range of historic features on a gentle walk around the grounds. From surreal trees to the restored walled garden, an impressive collection of Victorian Glasshouses and a 300 foot-long pergola.

Lunch available in the West Dean Garden Restaurant

Transport not provided, please share lifts where possible

Cost: £14 per person – Booking essential

Contact: Pauline Davis [paulinemdavis@gmail.com](mailto:paulinemdavis@gmail.com) or 07759646353

## NEED A CARER?

Highly experienced qualified carer available

Hours to suit your needs

Cheryl 07810 881 267

**We provide the best possible care for your feet**

**Book your appointment:  
01372 454583**



**Bookham  
Chiropody & Podiatry Clinic**  
Diagnosis, Expert Treatment & Professional Care  
for Your Feet

**29 High Street, Great Bookham KT23 4AA**  
[www.bookhamchiropody-podiatry.co.uk](http://www.bookhamchiropody-podiatry.co.uk)

**Vivien Cresswell**  
Made-to-measure Soft Furnishings

Curtains Roman Blinds Cushions



Extensive range  
of fabrics

01737 843858  
[www.cresswellscurtains.co.uk](http://www.cresswellscurtains.co.uk)



## KING WILLIAM IV

Dear friends and neighbours

Wow! what a lovely summer we have had! Only black cloud was losing our annual cricket match against the Runners. But great fun was had by all and thanks again to Greg Ayton for organising it.

Let's hope the good weather continues into the autumn. I am pleased to say Eamonn's sciatica is slowly getting better and he even managed a three hour shift behind the bar last week. And so he hopes to see you very soon.

All the best for now, Anne

Byttom Hill Mickleham 01372 372590 [www.thekingwilliamiv.com](http://www.thekingwilliamiv.com)



Extensions and alterations often require a

**Structural Engineer  
Robert Wynter & Partners Ltd**

**01306 879875**

Book House Vincent Lane  
Dorking RH4 3HW

## Painting

Decorating tiling  
Curtain & blind hanging  
Wallpapering  
Furniture assembly etc.

- Fully insured
- Free estimates
- References available

Tel: Martin 07770 441 201



## Mike Palmer

**Electrical Services**

Part P registered electrician



**From additional lighting and sockets  
to complete rewires**

Fully insured Registered with the NICEIC

07866 930483 [mike@mikepalmer.biz](mailto:mike@mikepalmer.biz)

Boxhill Way Strood Green Betchworth RH3 7HY



It has been an incredible summer. Who would have thought we would have had weeks of sunshine over the school holidays. It wasn't, of course, all sunshine, the annual Ride London turned into the only wet day we had. It didn't stop Steve, our Assistant Manager completing the 100 miles in a great time along with thousands of cyclists who stopped for a quick coffee and flapjack at the top of the Hill.

We continued our Nature's Harvest theme with walks to identify the many edible foods that are found on Box Hill and the café reflected this lovely produce. We had strawberries, elder

## National Trust Box Hill

flower, cherries, raspberries and hazel nuts on the menu but we resisted the idea of making sloe gin although a few staff tried that at home.

This month we will be welcoming new Bugs, our toddler group. Last year's lovely children have moved on to school and we are looking forward to meeting our new recruits. Watching the children exploring nature is a great pleasure but we have got boot covers ready in the café because it's not a proper outdoor adventure if you do not come back muddy and wet.

At the end of September we are having a special Fungi Week. There will be walks to look for the mushrooms

growing in the area and in the café we will be serving mushroom soup and a lovely mixed mushroom quiche which we trialled in the café last week very successfully.

We hope you have all enjoyed your summer holidays and look forward to seeing all our local friends back up here soon.

**If anyone is interested in working at the Box Hill Centre take a look at [www.nationaltrustjobs.org.uk](http://www.nationaltrustjobs.org.uk) for when jobs become available.**

Suzanne Taylor,  
Retail and Catering Manager  
[Suzanne.Taylor@nationaltrust.org.uk](mailto:Suzanne.Taylor@nationaltrust.org.uk)  
01306888793 Option 1

## The Friends of St Michael's School need your help

Schools across the country are facing increasing budgetary pressure and St Michael's is no exception. As such, the work of the Friends of St Michael's is ever more important. The Friends is a registered charity, run by a committee of parents, and supported strongly by the school staff and parents and carers. We work to bridge this funding gap and ensure the children have an enriching and rewarding time at the school.

This past year we were hard at work fundraising with a fantastic range of events for children and adults alike. There was a glow disco, Christmas story telling, Christmas tree sales, Easter trail, summer fair, quiz night, gourmet night and mum's film night to list just a few!

Funds raised by the Friends have been spent on a number of initiatives. These include new play equipment for the Reception class, Espresso educational subscriptions, and new flooring throughout the Reception classroom and bathroom areas. We are also making headway in our efforts to purchase 'sound clouds' for the hall. These will improve the acoustics, particularly for children with additional needs, who sometimes find the echo and reverberation overwhelming at busy periods such as lunch and assemblies.

Fund raising for the sound clouds will continue into the forthcoming academic year, alongside a number of other areas and the Friends already has a great

calendar of events in place to ensure this year is just as successful!

If you would like to help the Friends, there are a number of ways you can get involved from the comfort of your own home! Firstly, please consider using EasyFundraising, a charity scheme which does not users cost a penny but helps the school every time you shop online. Hundreds of popular retailers (Amazon, John Lewis, Waitrose, M&S, Argos, Lakeland to name but a few) are signed up and make a donation to the Friends of St Michael's with every purchase you make. Simply download the web or mobile app at [easyfundraising.com](http://easyfundraising.com), select 'The Friends of St Michael's Mickleham' as your cause and start shopping. You need to go to your favourite retailers via the Easyfundraising site but it only takes a few seconds and you will shop on their usual website. It really can make a difference to our income.

Secondly, we are looking for any companies who offer match funding or similar schemes that we can approach to support the school. If you work for a large corporation who offers match funding as part of their corporate social responsibility programme, please get in touch – we would love to hear from you! Match funding can sometimes see our fund raising efforts doubled, so again this could make a real impact on our income.

We will again be offering Christmas trees for sale this year. Thank you to those local residents who have supported this in the past and we hope you will consider buying your tree through us this year. We had lots of compliments on the quality of the trees and the convenience of being able to collect them from the school in time for Christmas! More details to follow in a later edition of MPM.

We are very grateful for the support that various village events such as the Strawberry Tea and Village Party provided to the school and look forward to joining many more successful events in the coming year to benefit both the school and the village.

If you would like to find out more about our fundraising, or offer your support in any way, please contact us at: [friendsofstmichaels2017@gmail.com](mailto:friendsofstmichaels2017@gmail.com) or via the school office.

Danielle Morrison / Debbie Turner,  
Co-Chairs, The Friends of St Michael's



## Domestic Appliance Repairs

30 years' experience repairing and installing all gas and electric domestic appliances



- Cookers Microwaves
- Dishwashers
- Washing machines
- Fridges / Freezers
- Water coolers
- Coffee machines
- Tumble dryers

Contact: Andy 07895 719 706  
kirk21stcentury@aol.com



## Julie Watts Family Law

AN AFFORDABLE AND EXPERIENCED PROFESSIONAL ALTERNATIVE TO TRADITIONAL SOLICITORS

- Divorce • Arrangements for children • Finances
- Court Proceedings

PROUD TO PROVIDE A DIFFERENT KIND OF SERVICE

- Affordable fees • Straight-talking advice
- Practical real support

Contact me for a consultation

07808 572157 juliewattsfamilylaw.co.uk

07871 051661 / 01372 458616  
timskerrittgroundworks.co.uk

**TimSkerritt**  
LANDSCAPE & GROUNDWORKS

## Turn your vision into a reality

Tim Skerritt Landscape & Groundworks offers a comprehensive range of services to both commercial and domestic clients across Surrey.

From hard landscaping to extensive site excavations, we offer a high quality, honest, reliable and competitively priced service, guaranteed to meet all your needs. Contact us today to find out more.



Open  
Monday to Friday  
8 a.m. - 5 p.m.  
& Saturday  
8 a.m. - 1 p.m.

All leading makes of lawn mowers

& garden tractors catered for

Reasonable rates

Free estimates & friendly service

Paul White Bookham 01372 458008

## Need help with your accounts?

If you run your own business you will appreciate how difficult it can be to keep up with your accounting paperwork.

However meeting deadlines and understanding the financial health of your business are crucial to avoiding penalties and ensuring that the hard work you put in pays off where it matters – in your pocket

- Tailored accountancy local to Dorking – saving you time
- Fixed fees – saving you money • Free Xero software – simple invoicing

Call today to arrange a  
free no-obligation  
consultation

01737 652 852

esther@a4cgroup.co.uk  
natasha@a4cgroup.co.uk



## Betchworth Electrical Contractors

07966 239644

- Specialist in fault finding • Complete rewiring
- Additional lights and sockets
- Specialist in pools and hot tubs • Garden lighting and power
- Electrical installation condition reports
- Telephone and computer cabling • Central heating controls
- Smoke alarms to BS5839-6:2013



All work is in compliance with  
BS7671:2008 Amd. 3:2015



## Dorking Pest Control Services

Local Authority Approved Contractors



Our Services include: Wasps Bee Swarms Hornets Rats Mice  
Squirrels Fleas Flies Ants Cockroaches Bed Bugs  
Rabbits Moles Foxes and Deer



• Domestic Commercial and Industrial • Contract Work • Preventative Control Programmes

Experts in pest control throughout Surrey

Office: 01306 743001 Ivor: 07710 117491 Chris: 07971 519415

www.dorkingpestcontrol.com



In glorious June sunshine and in front of the assembled school and guests, HRH The Earl of Wessex unveiled a commemorative plaque to mark the opening of the school's multi-million pound sports centre. The school boasts a long-standing royal patronage having had a number of visits in the past including from The Duke of Edinburgh, The Duke of York and The Princess Royal. Headmaster Cory Lowde said We were honoured to have His Royal



## Box Hill School welcomes HRH The Earl of Wessex KG GCVO to open state of the art Sports Centre

Highness open our new facility, in particular because of the historic connection between Box Hill School and Gordonstoun, where Prince Edward was a former Head Boy. Both schools together founded the Round Square movement which now promotes holistic education as part of the distinctive philosophy of the educationalist Kurt Hahn - most clearly recognised in the Duke of Edinburgh's Award scheme.

The Earl is now leader of this scheme which also traces its roots to Kurt Hahn and Box Hill School. All students within the Box Hill community engage with the DofE scheme through the Bronze Award and many subsequently complete their Silver and Gold Awards.

The new Sports Centre is an impressive facility with indoor courts for basketball, netball, hockey and football as well as indoor nets for cricket, a multi gym, dedicated PE teaching space and changing rooms. Despite its size it sits comfortably in the landscape, dropped several metres below ground and boasting a tennis court on the roof. It is cedar clad and in keeping with the beautiful surroundings of the school's campus.

We are delighted by the opportunity to extend our sports provision for current and prospective students and the recreational use it offers for our boarding community in the evenings and at weekends. Emma Bushnell



## THE SPIKE

Mickleham & Westhumble Local History Group  
Guided tour of The Guildford Spike  
Thursday 11<sup>th</sup> October

Please join us for a guided tour of the Guildford Spike. We will meet in the car park for a 2 p.m. start. The Spike was built in the grounds of the Guildford Union Workhouse as a Casuals Ward, providing accommodation for the

vagrant poor. It is the only one of its kind remaining in the country. During the tour we will explore the lives of the Casuals, see the original cells where they slept and discover how they earned their keep. Booking is essential as numbers are limited. The cost for

the tour is £5 per person. For further information, or to reserve a place, please contact:

Judith Long  
judith.long2@btinternet.com  
01372 375206

Or Roger Davis: 01306 884505

**TONY WINCH**  
**CARPENTER, JOINER**  
**& CABINET MAKER**  
[www.tonywinch.com](http://www.tonywinch.com)  
**01306 742373**  
**07969 016 924**

**Shakespeare Electricals**  
 Your local electrician



**Fully qualified and insured**




**10% off labour costs with this advert**  
**Call Matthew on 07783 553880**  
[www.shakespeare-electricals.co.uk](http://www.shakespeare-electricals.co.uk)

**Get IT Fixed, Get IT Connected**  
 Expert Repair & Maintenance



Brockham based. No call out charges. Fully transparent quotations with no hidden costs. We make technology work for you.

Call us now on **01737 845980** ChalkHill Systems  
[www.chalkhillsystems.co.uk](http://www.chalkhillsystems.co.uk)

**Building Plans**  
 For home improvements & extensions  
 Including planning & building regulations  
 Fast efficient service at competitive rates

**MICHAEL LLOYD** CEng MICE MINT  
 For free consultation:  
 Phone: 01483 205479 or 07958 791 402  
 Email: [michael@lloydplanning.london](mailto:michael@lloydplanning.london)

**R A BUTLER**  
 INTERIOR AND EXTERIOR  
**PAINTING & DECORATING**  
 OVER 30 YEARS' EXPERIENCE




**BUILDING REPAIRS UNDERTAKEN**  
 PATIOS DECKING ETC NO JOB TOO SMALL  
 LOCAL REFERENCES IF NEEDED  
**01372 372586 / 07776 256131**

**OSTEOPATH**  
**NICK WOOLLEY**  
 BSc (Hons) Ost  
 Osteopathy for all ages  
 Also offering Cranial Osteopathy and Myofascial Acupuncture needling treatments

For advice or an appointment  
**01372 379270**  
[www.Headleyosteo.com](http://www.Headleyosteo.com)



**GARDENING**

Free quotations

Contact Robin 07740 308 490 [contourgardening@outlook.com](mailto:contourgardening@outlook.com)  
[www.contourgardening.com](http://www.contourgardening.com)

**SERVICES**  
 — Gardening Maintenance —  
 — Hedge Trimming Specialists —  
 — Garden Design —  
 — Fencing —  
 — Patio Construction —



A six-week break over the summer sounds like a long time, but it's actually a timely break for the staff, children and parents alike. We welcome the chance to recharge our batteries, re-energise for the coming term and spruce up the nursery setting ready for our return in September.

The lead up to the summer holidays is usually action packed, and this year was no exception. Alongside our normal curriculum and activities - which included a lot of fun water play given the glorious weather - we also managed to fit in a summer production,

When summer's end is nighing...

sports day and leavers's party. The children amaze us every year with their willingness to take on the not-unsubstantial task of learning lines, songs and routines, and this year was no exception. Our older children are given the speaking roles with younger ones forming a very enthusiastic chorus line. After lots of practice, the performance of Chicken Licken, the story of a confused chicken who believes the sky is falling in after being hit on the head by an acorn, went off without a hitch. As well as proud parents, grandparents and carers, we also welcomed older siblings from St Michael's School to come along and watch their brothers and sisters take centre stage. Well done to all our performers. With barely time to take breath, next up was Sports Day. The children were divided into teams and took part in running races, an obstacle course, flying fish and pram races. Lots of fun and of course, an enthusiastically competed parents' race.

Last up was the leavers's party for our older children who are off to school in September. Arriving in an array of fancy dress, the children enjoyed a morning of fun courtesy of a magician and then a lunch cooked by the staff which included produce grown by the children. As usual, there were some tears as the children said their farewells, but we know we have done a great job preparing them for school.

Over the summer our committee arranged some play dates for the children. These are an important tool for the nursery while we are not in session as they help the children socialise in a larger group and maintain and make new friendships among both children and parents during the break. We are about to open our doors for autumn term and as well as welcoming back lots of familiar faces, we look forward to getting to know our new families over the coming weeks.

Hilary Budd



Amy Rieley, St Michael's Community Nursery Chair, writes ...

Hilary and I would like to say a huge thank you on behalf of St Michael's Community Nursery to the various village groups and businesses who have supported us over the last 12 months. We have been very fortunate to benefit from a number of the community events- MPM Christmas card, the pub cricket match, Strawberry Tea and the Village party. We are lucky to be part of such a supportive village. Thank you for your continued support.



## Mickleham Village Hall Dell Close

Weekdays 9.15 am - 12.15 pm (term time)

### WITH OPTIONAL LUNCH CLUB

On Mondays and Thursdays there is the option for children to stay until 2.45 p.m.

Maximum 26 children per session

• playing naturally • learning naturally

We offer an excellent range of pre-school activities for 2½ to 5 year-olds where they can learn through play in an informal friendly atmosphere.

Contact us for more information about admissions

01372 361021 [www.stmichaelscommunitynursery.co.uk](http://www.stmichaelscommunitynursery.co.uk)

## Tuesday Toddles

A new friendly group in Mickleham for kids aged 0-5 years to play along side their Childminder or Registered Nanny

Mickleham Village Hall

Every Tuesday Term time only 9.30 - 11.30 a.m.

For more information please contact:

Natalie 07790 318 653 or ask to join our closed Facebook group for Tuesday Toddles for regular updates.

Next term for Bugs: See website

Mondays: 11am and 1.30 pm  
Tuesdays: 10am 11am and 1.30pm  
Session length: 45 minutes  
For more info or to register contact:  
[learningboxhill@nationaltrust.org.uk](mailto:learningboxhill@nationaltrust.org.uk)



## World famous illustrator Alex Brychta visits St Michael's

This past year we had lots of 'wow' learning opportunities with a Dome planetarium when we learned about Space in Year 2, Year R had chicks to look after for two weeks and we even had our own Great Fire of London burning down our D&T Tudor houses on the playground. And at the end of summer term we were delighted to welcome the world renowned and yet very local children's book illustrator Alex Brychta who came to share his amazing talent with the children.

Our children, as well as staff and parents are very familiar with the well-loved Biff, Chip and Kipper characters that Alex draws for the Oxford Reading Tree reading scheme books. As many have learned to read with Biff and Chip, it was a super treat for them to watch as Alex brought to life so many of their favourite characters.

First Alex talked to the older children about his life and how he became an illustrator and how author Roderick Hunt finds inspiration for his stories and how Rod and Alex work together to create the books. Alex demonstrated how he draws and shared some of the secret techniques that he uses to illustrate the Biff and Chip stories. He encouraged all the children to draw, showing them some simple techniques that they could use.

Alex drew his famous Floppy the dog and some of his other familiar dogs and horses with Years 1 and 2 and then drew Biff and Chip for our Reception class. The children were in awe of his skill and how quickly his characters appeared.

Here are some of the children's comments as they watched: *He is REALLY good at drawing isn't he? ... Oh, he has just given me an idea for a story.*



**St Michael's School**

[www.stmichaels-dorking.surrey.sch.uk](http://www.stmichaels-dorking.surrey.sch.uk)

After his talk, children found great delight in spotting Alex's characters and techniques in our school collection of Biff and Chip books.

Following Alex's visit the children have a new found enthusiasm for drawing and for reading and writing stories, explored during our recent art morning – where the children were able to try out their new skills and demonstrate their creative flair.

Alex very kindly donated the excellent illustrations that he did with the children to the school and we are looking forward to hanging them in pride of place in our entrance hall shortly.

Thank you Alex for sharing your amazing talent with us and for bringing art to life for the children!

We look forward to another exciting school year starting on 6<sup>th</sup> September.



Above: Alex Brychta showing his drawing to the children. Right: Floppy the dog



## Visit Dorking Caves

Next to War Memorial, South Street, Dorking  
Tours Saturday 15<sup>th</sup> September

10 & 11 am and 1 & 2 pm

The tour descends 60 feet underground to explore these fascinating tunnels. The tour covers the history and geology of the caves as well as many interesting legends and theories.

Tours: Booking essential via email [caves@dorkingmuseum.org.uk](mailto:caves@dorkingmuseum.org.uk) or website [www.dorkingmuseum.org.uk/south-street-caves/](http://www.dorkingmuseum.org.uk/south-street-caves/)

Photograph: Dorking Museum



More details in the Mole Valley Heritage Open days booklet – available on line or from Dorking Museum

## Housekeeper and/or Nanny

Available for 2 – 3 mornings a week, hours to be agreed. References available  
Please contact Anne Goodman on 07952 437 539

## Carer Needed

I am looking for a carer for my happy, sweet-natured daughter with learning difficulties who can be at our home in Westhumble from 4 pm to 8 pm week days from mid-September.

Please contact Sue on [Sue.Kelly@boc.com](mailto:Sue.Kelly@boc.com)

**BRAIN TEASER answer: Unfinished symphony**

## Children's Harvest Festival Workshop

Sunday 7<sup>th</sup> October 9.45 am

In St Michael's School for all accompanied children aged under 11

Followed by Harvest Festival Family Service

11 a.m. St Michael's Church

# Cryptic Crossword

- Across
- 6 16 disapproves of this bad language (7)
- 7 The sound of the endless spirit (5)
- 9 Liking no soldier to be cooked in oven (4)
- 10 Show wot 6x2, 16, 20, 27 have in common (2,4,4)
- 11 Tom is on the Hollywood top table reportedly, a real agent for change (8)
- 13 Free mud maiden runs wild without Dad (6)
- 15 Inch over to get ready to play the violin (4)
- 17 Wizard follower arose topless – smash hit! (5)
- 18 If girls lay back they can be called this (4)
- 19 Does jobs – beheading pests, for example, will get things started (6)
- 20 Rex sounds like Houdini's brightest star (8)
- 23 Chi-chi = possibly adapting an original arrangement (5,5)
- 26 Part of Judi Dench's diaphragm (4)
- 27 A resort town in an area of famed precipitation (5)
- 28 Little bit of Scottish scourge hidden in tin (7)

- Down
- 1 Young Satan confuses those who aim to help (5,5)
- 2 Boris Johnson seems to do this to cause consternation (6)
- 3 De Gaulle was a commander without ego?! (4)
- 4 Walking out with distinction (8)
- 5 Test lesson with Miss's top taken off (4)
- 6 Pupil of 16 with surname of 20's doctor (5)
- 8 Pop singer is fanatical about banana ends (7)

- 12 It's rubbish to give a beating without top hat (5)
- 14 Failure involves yielding to doubts (10)
- 16 Hurricane Jack? (7)
- 17 Put back Q-Z to get single (8)
- 21 I adore messing about with Lemmy working for Jimi Hendrix perhaps (6)
- 22 Common ingredient in macaroni on toast (5)
- 24 Boat-builder has short turn without going first (4)
- 25 Eats nachos with no account for possible upset (4)

SOLUTION TO THE JULY/AUGUST CROSSWORD

**Across:** 8/9/28 For a few dollars more 10 Doodah 11 Goodness 12 Mnemonic 14 Rococo 16 Adam 17 Opium 18 Ohio 19 Escort 21 Tussocks 26 Assets 27 Black sheep

**Down:** 1 Colonnades 2 Cardamom 3 Afghan 4 Twig 5 Monogram 6 Clinic 7 Urns 13/23 Clint Eastwood 15 Cricketers 17 Outhouse 18 Opossums 20 Optics 22 Scampi 24 Able 25 Dyed

Andrew Tatham



View of Westhumble playing fields taken from Box Hill showing the effects of eight weeks without rain. Dorking Wanderers FC which has used the field in recent years has now moved to the new Meadowbank stadium in Dorking.

Neil A Mason  
Established 1976



All electrical & plumbing work undertaken

Inspections and Testing  
Extra Points Rewiring etc  
Security and Emergency Lighting  
Temporary Power and Lighting Hire  
Public Address and Sound Systems  
Installed or For Hire  
Complete Bathroom and Fitted Kitchen Installation

**WESTHUMBLE**  
Telephone: 01306 889073

## DAVID TOBITT CARPETS

FINE CARPETS SUPPLIED AND FITTED

*We have over 30 years' experience working in Dorking and the local area*

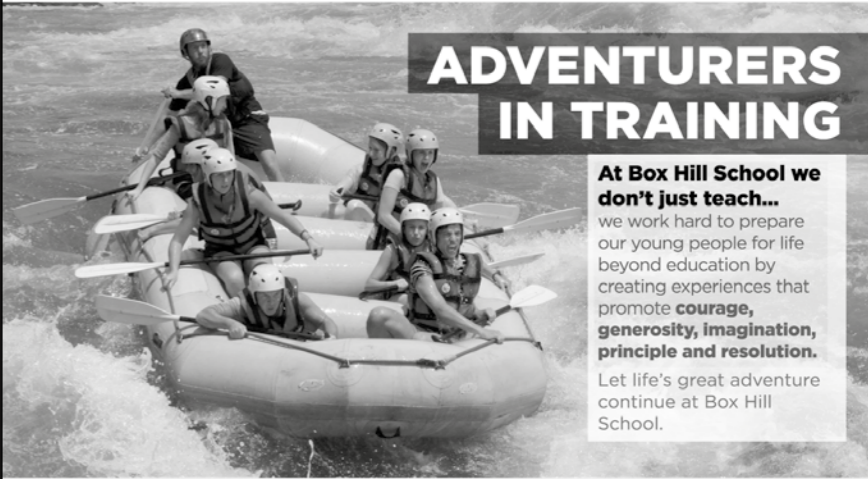
A comprehensive range of carpets available  
We can bring samples to your home  
Advice given on all types of carpet work



**WE TAKE A PRIDE IN WHAT WE DO**

01306 885032  
www.davidtobittcarpets.co.uk

INSPIRATIONAL  
**Box Hill School**  
for girls and boys aged 11-18



## ADVENTURERS IN TRAINING

**At Box Hill School we don't just teach...**  
we work hard to prepare our young people for life beyond education by creating experiences that promote **courage, generosity, imagination, principle and resolution.**  
Let life's great adventure continue at Box Hill School.

Telephone: **01372 373382**  
or email **admissions@boxhillschool.com**  
**www.boxhillschool.com**

**MARTIN BURGESS**  
LANDSCAPE AND GARDEN DESIGN

 CONSULTATION SERVICE FOR GARDEN PLANNING PLANTING AND MAINTENANCE

01737 842289 / 07966 183395

## HART SCALES & HODGES SOLICITORS

*We have been serving the Dorking community since 1782 and are proud to support our local parishes*

Our services include:

- Buying and selling your home
- Extending your lease
- Commercial property
- Inheritance Tax planning
- Care fees and Asset protection planning
- Setting up a trust
- Wills and Probate
- Lasting Powers of Attorney
- Divorce Separation and Children
- Employment for employer and employee
- Litigation and dispute resolution
- Business advice

Please call us on 01306 884432 for a FREE initial consultation to discuss your requirements  
**www.hartsscales.co.uk**



6 en-suite rooms from £89 per night including breakfast

**OPEN**

Monday – Saturday: noon – 11 pm

Sunday: noon – 10.30 pm

**BREAKFAST** (open to non-residents) **SERVED**

Monday – Thursday: 7.30 – 9.30 am; Friday & Saturday: 8 – 10 am

**LUNCH & DINNER SERVED**

Monday – Thursday: noon – 3 pm & 6 – 9 pm

Friday & Saturday: noon – 3 pm & 6 – 10 pm

Sunday: noon – 6 pm

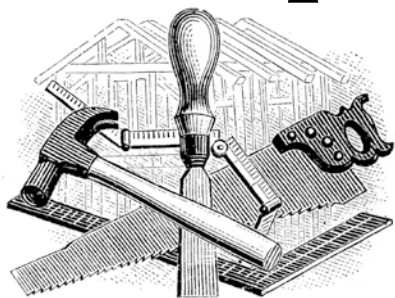
The Running Horses, Old London Road, Mickleham, Nr Dorking, Surrey RH5 6DU

Call Us: 01372 372279 Email: [book@therunninghorses.co.uk](mailto:book@therunninghorses.co.uk)

# J S Wilson

Mickleham

## Carpentry & Building Services



Extensions ~ Conversions  
Refurbishments ~ Property Maintenance  
Fully guaranteed ~ Fully insured

*One call WILL solve it all*

Contact Jason on: 07761 926684 or 01372 379359

[jswilsonconstruction@gmail.com](mailto:jswilsonconstruction@gmail.com)



**RESIDENTIAL • COMMERCIAL  
AGRICULTURAL • SCHOOLS • ACOUSTIC  
HOARDING • GATES • SECURITY**

**RICHARDSON & BRADS FENCING LTD**  
**T: 01306 640 143 - 01483 414 74**

E: [INFO@RBFENCINGLTD.CO.UK](mailto:INFO@RBFENCINGLTD.CO.UK)  
W: [WWW.RBFENCINGLTD.CO.UK](http://WWW.RBFENCINGLTD.CO.UK)

A: 83 SOUTH STREET, DORKING, SURREY, RH4 2JU  
UNIT 45 MARTLANDS INDUSTRIAL ESTATE, SMARTS HEATH LANE, MAYFORD, GU22 0RQ

# John Wadsworth

INDEPENDENT ESTATE AGENTS



CALL NOW FOR YOUR FREE VALUATION

**01372 450500**

[www.johnwadsworth.co.uk](http://www.johnwadsworth.co.uk) [sales@johnwadsworth.co.uk](mailto:sales@johnwadsworth.co.uk)

*A professional efficient and friendly service*