

# MICKLEHAM PARISH Magazine

A community magazine for Mickleham and Westhumble



A.N. Colwell 1984

December 2022



## Bliss Chimney Sweeps

All appliances swept

Traditional brush & rod

Power sweeping

Pots & cowl fitted

Repointing, lead work & roof repairs

Fully insured Certificates issued

Free friendly advice

07739 638431

Blisschimneys@gmail.com

## Bullimores



Accountants for Life

Tax • Accounts • Probate

Inheritance Tax &  
Executorship

T: 01306 880880

E: [partners@bullimores.co.uk](mailto:partners@bullimores.co.uk)

W: [www.bullimores.co.uk](http://www.bullimores.co.uk)

Bullimores LLP licensed to carry out the reserved legal activity of non-contentious probate in England & Wales by the ICAEW

# MICKLEHAM PARISH Magazine

December  
2022

## Mickleham Parish Magazine

A community magazine for Mickleham and Westhumble published under the auspices of Mickleham PCC with an independent editorial panel.

The magazine is published at the beginning of each month except January and August.

COPY DEADLINE  
FEBRUARY MAGAZINE  
Sunday  
8<sup>th</sup> January

send to:

Sue Tatham

St Anthony Pilgrim's Way  
Westhumble

Dorking RH5 6AW

01306 882547

[editor@micklehammag.co.uk](mailto:editor@micklehammag.co.uk)

Contributions in any form are welcome as are good quality photographs. There is no charge for advertising local charity and community events. However the editors reserve the right to shorten omit or reformat articles submitted for publication depending on space.



Printed by Holbrooks Printers  
Portsmouth

Mickleham Rectory

Dear all

Changing seasons bring changing colours to nature. The rich autumn colours have been beautiful but have almost gone. We are now looking forward to the bold and cheerful colours of Christmas which brighten up the gloomy, colder winter days and long evenings. The church uses different colours too to mark the changes in the seasons and these colours can remind us of the true meaning of periods such as Advent and Christmas.

Purple is the main church colour of Advent which can be seen on the altar frontal and the pulpit and lectern falls. It is also the main colour for the advent candles we have in church this year. Purple is a colour of repentance and of royalty reminding us to prepare our hearts to welcome the coming king, Jesus during this season. One of the advent candles in the ring of four is often pink which is a reminder of joy with which we will celebrate the birth of Jesus.

Green is also a colour of the season with greenery decorating our Advent ring, our door wreaths and of course The Tree is evergreen. Green symbolises life, especially when linked to evergreens and is a reminder of the hope and new life which the birth of Jesus points us towards.

White is another colour we see at Christmas, not only representing snow but as a reminder of the baby Jesus, who was wrapped in white swaddling clothes and who came to purify us from sin. The central candle of the advent ring is white and lit on Christmas Day showing Jesus coming as the light of the world. Our altar frontal will be white from Christmas Eve too. White is also a reminder that Jesus came to bring peace, he came as the Prince of Peace. Let us pray for more peace in our world.

Red is a colour seen a lot at this time including of course the suit Father Christmas or Santa wears. Apparently, St Nicholas, who was the saintly forerunner of Father Christmas, wore red because he was a bishop. Red is the colour of love, reminding us that love came down at Christmas: Christmas is about love.

When you see one or more of the colours of Advent and Christmas then pause for a moment and think of what the colour means for you as we prepare for and celebrate God's gift to us of Jesus. It is a gift that is free and a reminder that there are some things money cannot buy. In these times of economic uncertainty and austerity, we may be cutting back on our spending this Christmas but let us not cut back on being loving towards our families and friends and to those in desperate need.

All are welcome to join us in church as we sing carols and celebrate the love shown to us in the birth of the Son of God, Jesus.

Wishing you a loving and peaceful Christmas and a Happy New Year too.

God Bless

*Sandra*

The Rev'd Dr Sandra Faccini, Parish Priest



## Stepping Stones

**MORE THAN JUST A PUB**

CAFÉ-BAR

Serving Morning Coffee and Afternoon Teas

RESTAURANT & ALFRESCO DINING

Serving fresh classic-style pub favourites

Live music events Take-aways available

Available for functions / private parties / celebrations / family gatherings

Dog friendly

Last Monday night of the  
month from 7.30 pm

01306 889932

[steppingstonespub@gmail.com](mailto:steppingstonespub@gmail.com)

[www.steppingstonesdorking.co.uk](http://www.steppingstonesdorking.co.uk)

*Please check website for up-to-date menus  
events and current opening times*

## Sherlock Funeral Service

*Sherlock Funeral Service is an  
Independent family owned business,  
established over 100 years*

- Private Service Chapel & Rest Rooms
- Home visits arranged if required
- Pre-Paid Funeral Plans available
- Free Parking

Telephone: 01306 882266

Trellis House, 190 South Street, Dorking RH4 2ES.

Email: [office@sherlockandsons.co.uk](mailto:office@sherlockandsons.co.uk)



**Funeral Directors & Monumental Masons**



## St Michael's Church Services

10 am Sunday Services available on Zoom

Joining information for both Zoom and telephone users is available in Pews News Online each week. If you would like to join us by Zoom then contact Alison Wood for the codes or to ask her to include you on the emailing list for Pews News: [admin@micklehamchurch.org.uk](mailto:admin@micklehamchurch.org.uk) / phone 01372 376443. We hope as many of you as possible will be able to join us for worship.

Please refer to Pews News Online for the latest information. If you missed any of the services or would like to revisit them all are available on the church YouTube channel: <https://youtube.com/channel/UCI4pbewCT91iZhcd0EjJBlw>



## Alpha is back!

After the successful and enjoyable Alpha Course last year we are planning to hold another one. It is a great opportunity to learn about and discuss the Christian faith. The start date is Monday 16<sup>th</sup> January, from 7 to 9 pm and it will then continue every Monday for 10 to 12 weeks. It will be held at Chapel Farm in Westhumble. To find out more or sign up please email Andy on [diamo1@hotmail.co.uk](mailto:diamo1@hotmail.co.uk) or phone 077789775354. We are also looking for some simple admin support so if you could offer an hour or so a week for around 12 weeks please do get in touch.



## Bible Study

Monday Evening Group  
8 - 9 pm  
resumes on 9<sup>th</sup> January after the Advent course

3 Cleveland Court, Westhumble  
Contact Amanda Wadsworth  
[aewadsworth@hotmail.com](mailto:aewadsworth@hotmail.com)

Thursday Morning Group  
11 am - 12.30 pm

Abbotts Cottage, Mickleham  
Contact Alison Wood  
01372 376443

[alison.wood29@btinternet.com](mailto:alison.wood29@btinternet.com)  
ALL WELCOME TO EITHER GROUP

## The Crib Service 2022 Christmas Eve 4 pm

Our annual Crib Service is a very special event. We start at 4 pm at the junction of Adlers Lane and Chapel Lane, before processing to the Bonfire Field in Westhumble, led by the star. There are readings and carols along the way, which help to tell the story.

Once again, we would like as many people as possible to take part, either as readers or the 'cast'. We are fortunate in having cast all the main characters but we still need a bevy of angels, flocks of shepherds and an impressive train of Wise Men with their attendants. Adults are welcome to dress up as well, especially if you are a frustrated shepherd or a 'very wise man'. Please feel free to join the children in the tableau, I am sure there were shepherds, angels and Wise Men of every age in Bethlehem that night. Last year we had a mixture of adults and children reading for us, which was a delight. There will be hot drinks afterwards.

If you have not been before, it is a truly wonderful event which reminds us, in the midst of the hurly-burly of present wrapping, potato peeling and last-minute panics, that what we are celebrating is the birth of a baby, Jesus, in a crude stable, to a young girl and her husband whose hearts must have ached with love and fear in equal measure.

If you would like to take part, or help in any way, please get in touch with me as soon as you can.

It is not a ticketed event, and all are welcome, there is plenty of space in the field, but please wear suitable warm clothing – thermals under the angel costumes and welly boots for all is a good idea, the field is usually inhabited by cattle who seem to like standing in the same places as we do.

Anne Weaver 01306 883932



## First Saturday of the month Coffee Morning at Westhumble Chapel

3<sup>rd</sup> December  
7<sup>th</sup> January

Come along between 10 am and noon for coffee, bacon butties and cake £1.

Free drinks for children

Everyone welcome

For further information call Jonathan Blake  
07787 126966



## Men's and Women's Saturday Breakfasts at the Stepping Stones

9 - 10 AM

A social gathering open to everyone

### WOMEN'S BREAKFAST

3<sup>rd</sup> SATURDAYS

NEXT BREAKFAST

21<sup>st</sup> JANUARY

Book with: Stephanie Randall

0773 6933 482

[srandall55@gmail.com](mailto:srandall55@gmail.com)

### MEN'S BREAKFAST

4<sup>th</sup> SATURDAYS

NEXT BREAKFAST

28<sup>th</sup> JANUARY

Book with: Andy Diamond

[diamo1@hotmail.co.uk](mailto:diamo1@hotmail.co.uk)



## Tea @ 3

Next Tea

16<sup>th</sup> January 2023

Host to be confirmed

ALL WELCOME

TRANSPORT AVAILABLE

Future Hosts Needed

Please get in touch with Julia if you are willing to help

[siberrman@btinternet.com](mailto:siberrman@btinternet.com)

## Children's Christmas Workshop Sunday 4<sup>th</sup> December

St Michael's School at 9.15 am

followed by

The Christingle Service  
St Michael's Church at 11 am



## Christmas Café at Westhumble Chapel

returns on

Saturday 10<sup>th</sup> December  
2 to 4pm

Crafts Chat Cake

If you would like to have a stall

no charge/just a donation. Please contact

[jennyhudlass01@gmail.com](mailto:jennyhudlass01@gmail.com)

## Thursday 22<sup>nd</sup> December Ex-Crew Get Together Stepping Stones 7pm

Put the date in your diary

For more details contact

Jonathan Blake 07787126966



## Carol Singing

in the  
Westhumble  
Chapel Ruins

followed by refreshments at  
Chapel Farm

Tuesday 20<sup>th</sup> December  
at 6 pm

This will be followed by mince pies and mulled wine at Chapel Farm. This event is held to raise funds for the Gambian Horse and Donkey Trust and a collection will be made. Please visit their website, [www.gambiahorseanddonkey.org.uk](http://www.gambiahorseanddonkey.org.uk) for details of the charity and the amazing work that they do. In the event of wet weather the carol singing will be held at the farm. The horses and donkeys at Chapel Farm look forward to welcoming you back this year.

## Carol Singing Round the Pubs

Friday 23<sup>rd</sup> December

Join us for Carol singing at one or more of the pubs in Mickleham and Westhumble.

Put a note in your diary. We start at 7.15pm at the Stepping Stones, 8pm at the Running Horses and 8.45pm at the King William.

Jonathan Blake 07787 126966



Superb professional  
cleaning of carpets  
oriental rugs  
upholstery curtains  
and leather  
Guardsman  
anti-stain protection

- spot stain and odour removal
- leather cleaning specialists
- flame retarding
- dust mite reduction service
- all work fully insured & guaranteed

For a free no obligation quotation call today  
Freephone 0808 144 9071  
John Joannides 28 Bracken Close Bookham

**Safeclean**  
*The furnishing care specialists from GUARDSMAN*



*Pinehurst  
Rest Home*

*We aim to provide an excellent service at  
competitive rates supporting emotional physical  
and social needs of our clients always respecting  
and protecting their status as adults.*

- Residential and 24-hour daycare
- Excellent cuisine
- Facilities for disabled: medic bath / lift
- Home doctor in attendance
- Single & sharing rooms
- Convalescent & short stays
- Lounge with TV & piano
- Separate dining room
- Physiotherapist chiropodist & hairdresser
- Entertainment: theatre visits / parties  
& cabarets held on premises

**National Trust Road Box Hill  
Mickleham Dorking Surrey RH5 6BY**  
Telephone: 01306 889942 / 888253

*Dorking  
Decorators*  
PROFESSIONAL  
PAINTERS & DECORATORS

**Established Local Family Business**

- Over 20 years' experience
- Internal & External
- Commercial & Domestic
- Friendly First Class Service
- Surrey / Sussex / Greater London

**FREE ESTIMATES  
01306 640418**  
**www.dorkingdecorators.co.uk**  
As approved by Checkatrade

**51° NORTH**  
EAT • DRINK • SHOP

**An exciting new place  
to eat, drink, shop**

- Morning Coffee and pastries
- Breakfast choices
- Selection of lunch dishes
- Afternoon teas & cakes
- Selection of savouries
- Wander around our food store selection

fiftyone.degreesnorth@yahoo.com

01306 320455

@51.Degrees.North.Mickleham @51.degreesnorth

London Road  
(Bottom of Byttom Hill)  
Mickleham  
Surrey. RH5 6EH

**PRIVE**

LUXURY HAIR SALON

8 High Street Leatherhead  
01372 360302

www.privelondon.co.uk i prive\_leatherhead



**SIMON HOOPER**  
**For all your decorating needs...**

Professional friendly and speedy service at all times

Fully insured	Insurance work
Exterior painting	Interior decorating
Free quotes & advice	Oil & Water-based products
Commercial/Domestic work	Wallpaper hanging & removal
07947 135 376	0208 3978 962
www.slhdecoratingservices.com	



**St Michael's Church Community Group**

## Autumn Lunches

The first two of these lunches have been great successes, with 26 and 33 people attending the October and November lunches respectively. A total of about £280 has been raised in the retiring collections, of which 25% will go to our church and the rest to St Michael's Nursery and Joe's Buddy Line, a charity providing mental health support for young people suffering from anxiety, depression and related issues, set up by one of our own congregation, Celia Lyons.

The last in this series is at 1 pm on 1<sup>st</sup> December. Please sign up using the forms at the back of the church so we know roughly how many gallons of soup to provide. Mary Banfield (07733 322477) is the contact point for both bookings and volunteers to help set-up and serve.

## FoodBank

It has been confirmed to us that your generous donations have, since only 1<sup>st</sup> April this year, amounted to 641kg, well over half a tonne of goods delivered to the Dorking FoodBank.

Thanks must go, in particular to John and Mary Banfield for storing, sorting and delivering the majority of this impressive total.

As Christmas approaches please keep this going. It is vital now for even more families. Some FoodBanks are having to cut down on individual donations due to this increased demand.

This does not include another significant amount taken by Andy Diamond to The Meeting Room and Leatherhead Start. Nor of course does it include the 700-odd individual medical items sent to Ukraine in the Easter Appeal earlier this year.

## Advent Windows

This year, we are changing the format of the 'Advent Windows' event so that while the general principle of Advent celebration is maintained, there will be fewer dates, and that the events will be concentrated at locations representing the various areas of the village in 'Advent Clumps'.

It is hoped that this will mean that a few houses will 'host' the Window Decoration or Illuminations, but that others in the area will help with the

## The Church Needs You

Most of us are familiar with the adage 'many hands make light work' and this is never more true than when it comes to organisations that rely on volunteers. In Mickleham and Westhumble we are fortunate to have two wonderful buildings where people can gather to worship, and like us they need love and attention. We are very grateful to all those who give of their time, money and talents already, we would be lost without them, but we need more. If you have ever thought about getting involved there are lots of opportunities available ranging from bellringing to flower arranging, reading

to cleaning, funerals to festivals and technical support to cake making.

Whether you have an hour a week, month or year to spare, whether you are young or old, experienced or a complete novice, there is something for everyone. It may feel daunting to take that first step but if you would be interested in finding out about how you could play a part in such an essential part of our community then please get in touch with me on 07790 473167 or churchwardens@micklehamchurch.org.uk. Thank you.

Catherine Diffey



**Carols by Candlelight**

Sunday 18<sup>th</sup> December  
St Michael's Church 6.30 pm

organisation and the provision of nibbles/mulled wine and other drinks. This does not preclude individuals putting their names and houses on the list though, as in previous years, should they so wish.

We are in the process of locating co-ordinators for locations in Mickleham (central), the School Lane area, Fredley and Westhumble. The Opening Ceremony will follow the same 'Tape-Cutting' ceremony at the start of Advent. The dates filled so far are:

27<sup>th</sup> November: Mickleham Church tree lights switch-on. This follows a concert by Tracy Kennington et al 'Peter and the Wolf'. Lights switched on at 5 pm.

1<sup>st</sup> December: A similar illumination and get together at 51 Degrees North at 6 pm.

17<sup>th</sup> December: Hall Farm, Swanworth Lane. Starting at 6 pm.

22<sup>nd</sup> December: Swanworth Lane Courtyard. 6.30 pm.

If you wish to do your own thing or to co-ordinate an event with neighbours, please contact Frances Presley (see the Community Group list in centre pages of this Magazine).

Mark Day



**Macmillan  
Coffee Morning**

I just wanted to write and thank all of you who supported our coffee morning this year in aid of Macmillan. Despite the weather you all turned out to support the event and I am so grateful. It was another record breaking year with our final total of £2,380 including a very generous family trust donation. It is great to be able to raise such a good amount of money for a wonderful charity by getting together with friends and neighbours and eating cake! Perfect. Thank you. Hope to see you all again next year - if not before.

With love Liz Absalom



## Silence Please

On Saturday 15th October, 'Silence Please', a group of lovely young Italian singers, delighted us with a concert in St Michael's Church. Their performance was a total joy both to hear and to see. This talented group all come from Sinalunga which is Dorking's twin town. (See page 10 for the report of Mickleham Choral Society's visit). Silence Please were invited as part of the Arts Alive initiative and supported by Dorking Twinning Association.

Juliet Hornbyl



The singers of Silence Please relaxing left and performing in St Michael's, right.

## St Michael's Church Community Group Live Theatre returns to Mickleham

**T**ickets for this event could be the first step in your Christmas present conundrum!

We are pleased to be putting on a production of *Posting Letters to the Moon* on Saturday 4<sup>th</sup> February in Mickleham Village Hall, starring Lucy Fleming and Simon Williams. Buy your loved ones a ticket, for the Christmas present with a difference!

This delightful two-hander is a romantic, funny and touching portrait of life during the Second World War, featuring readings of letters between Oscar-nominated actress Celia Johnson (Brief Encounter) and her husband Peter Fleming, posted to India and the Far East during the war working for Military Intelligence. The letters are read by their daughter Lucy Fleming and her husband Simon Williams.

These letters tell of Celia's experiences during the war, coping with a large isolated house full of evacuated children, learning to drive a tractor, dealing with rationing, occasional holidays in Cornwall where she took to surfing, and all the while accepting offers, when she could get away, to act - for David Lean, Noel Coward, wartime propaganda films, broadcasts, all sorts, and ultimately in 1945 starring in the classic film *Brief Encounter*.

Doors open 6.30 pm, performance starts at 7.30 pm. Cash bar. Tickets £18.50 adults; £9.50 under 18s, students and those on benefits; from [annie@micklehamhallfarm.co.uk](mailto:annie@micklehamhallfarm.co.uk). Profits to St Michael's Church and other local charities.

## Christmas: End of Term at St Michael's School through the Years

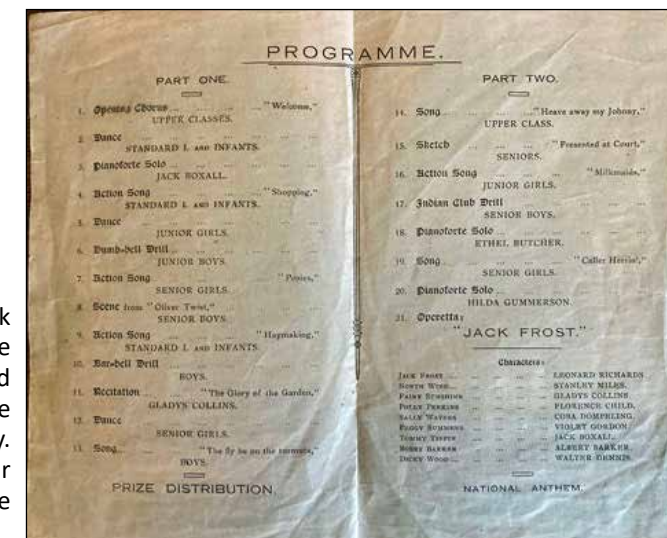
Going back to our earliest record in the log book in 1863, Caleb Howard (Master) does not mention Christmas at all at the end of term. The only clue that this might be a special time is the mention that on 24<sup>th</sup> December unspecified prizes were distributed and the schools closed early at 1 pm. The following year provides more detail to what is a clearly established custom: the prizes were given out by Thomas Grissell of Norbury Park House as the rector was 'away from home'. Mrs Birkett gave a handsome workbox to Eliza Grant and Mrs. Grissell that is described as an 'Illustrated Goldsmith'. These were special prizes but ordinary ones for regular attendance and good conduct were awarded on this occasion to 7 boys and 7 girls. Just short of 50 children were on roll at that time. Other categories included Scripture (given by the rector) and Needlework (by the chosen ladies of the parish).

This pattern continues for all of that century although a measles epidemic that 'swept through the village' in 1880 and outbreaks of influenza and scarlet fever meant cancellation in those years. The occasion became more open and elaborate as the years passed; by 1893 many of the school's managers, subscribers and parents were present and it took place not prior to the children going home but had become an evening occasion, 'bright and enjoyable' according to then Master, Mr. Mortimore. The whole jamboree lasted 3 hours!

The earliest programme in the archive is dated 15<sup>th</sup> December 1916 when prizes were distributed by Lady Lawrence (of Burford Lodge). Rather than the school being used as the venue, now

the prize giving took place at the village hall which had been built at the turn of the century. A much larger audience could be accommodated, with a Christmas tree given by the Box Hill Management Committee (this was before the National Trust was involved) and there was the advantage of a stage. Prizes were awarded by the rector for Scripture (8 children), the Samuel Woods Prize, Upper and Lower Divisions (4) and ones we might find familiar in school reports such as Regular Attendance (19), Writing (8), and Drawing (4), but Needlework is still important and those who have reached leaving age are rewarded too. Equally important now is the Christmas entertainment and much time is spent rehearsing. In 1916 the entertainment was made up of 14 various songs, recitations, dancing and playlets. Another programme in the archive (1923) shows the entertainment side of the evening has grown even more with 34 'acts', including an operetta, acting and a pianoforte solo. Mrs. Cullen of Mickleham Downs was distributing the prizes on that occasion.

Although there must have been Christmas spirit around, the first actual mention of Christmas in the log books is not until 1932 when we are told the school is to be closed for the Christmas Holidays on the 23<sup>rd</sup> December. In the 1940s Christmas parties in individual classrooms were popular but a decade later celebrations had mushroomed. On 20<sup>th</sup> December 1950 there was a school Children's Party with games and tea, the 21<sup>st</sup> saw the



The programme from 1923

arrival of a Christmas tree through the generosity of the parishioners and the Woods Trust; and the rector distributed a present to every child. 1959 goes one better with the arrival of a 16'6" Norway spruce, all classrooms decorated with a tree, and parties for which all parents send food while the school provided snacks, sweets and drinks. This year over more than 100 parents and residents attended the Christmas tree at the village hall where the children sang carols and Father Christmas was performed by Mr. Ellis. 'A memorable occasion enjoyed by all' was the verdict. Next day, Christmas dinner was served at the village hall after the children had walked over. Roast pork and Christmas pudding were on the menu, prepared by the cook and her helpers much to their credit in a cramped space. Before going home on the last day of term, ices and chocolates were given out, most likely organised by Charles Webb the Headmaster. In 1968, the year before he retired, turkey had replaced pork and I like to think he was responsible.

Much has changed in 100 years but the end of term before Christmas has its own particular excitement. I do think poverty has diminished and certainly we are healthier. Living standards have improved overall but I am not at all sure that today we have any more FUN!

Judy Kinloch

**Mickleham Choral Society's**  
**CHRISTMAS CAROL PARTY**  
Conductor - Juliet Hornby Accompanist - Judith Flint  
**FRIDAY 16<sup>TH</sup> DECEMBER**  
**MICKLEHAM VILLAGE HALL**  
**7.30 pm**  
Tickets £12 including refreshments  
£6 children 12 & under  
Available from: Mike Benson  
01306 876901  
[secretary@micklehamchoral.co.uk](mailto:secretary@micklehamchoral.co.uk)



Tracey's  
sewing room

where beautiful things come  
together one stitch at a time

Haberdashery  
Fabrics  
Sewing workshops  
Alterations  
Bespoke dress making  
blinds, cushions & curtains

## OPENING SOON IN DORKING

- Bookings now open for sewing workshops in January 2023
- Gift vouchers for sewing workshops - all levels and ages
- Learn to Sew, Intermediate and Advanced Courses

Call Tracey 07511079441

[tracey@traceyssewingroom.co.uk](mailto:tracey@traceyssewingroom.co.uk)

[www.traceyssewingroom.co.uk](http://www.traceyssewingroom.co.uk)



The editors and the magazine's panel members wish you all a very Happy Christmas and New Year. Thank you to all who contribute.



## Fully Experienced Carer/Companion

- PART-TIME LIVE-IN • DRIVING LICENCE HOLDER •
- HOURS to SUIT • BABY/CHILD SITTING •
- EXCELLENT REFERENCES • FULLY INSURED •

Reliable, Kind and Caring

**07748 743 732**

High Quality, Professional Home Care and Companionship Enabling People in Mole Valley & Surrey to Remain Living Independently at Home



## YOUR LOCAL PROFESSIONAL TREE HEALTH CARE SPECIALISTS

Felling, Pruning, Stump Removal, Planting, Logs,  
Woodchip, Air Spade Services, Consultancy

Call us on **01306 741800**  
**office@treeline.co.uk • www.treeline.co.uk**



Your visiting

**PHYSIOTHERAPIST**

**SUE JUDD** MCSP HCPC

40 years of experience.

All your requirements for elderly  
mobilisation & post-operative  
rehabilitation.

07834 227999 sue-judd@sky.com

## EDE BROS

• REMOVALS • STORAGE • SHIPPING •

- Since 1926, Capel-based and family owned
- STRESS-FREE, local, national & worldwide
- Contact us for your **FREE** estimate...

**01306 711293**  
**edebros.co.uk**



Gill and Paula would like to warmly welcome you to Aspen Care offering assistance to enable you to live in the comfort of your own home with care and companionship.

- A happy alternative to a care home
- Cover while your family or carer takes a holiday
- Recuperation and rehabilitation following a hospital stay
- All aspects of personal care medication and meal prep
- Dementia care disability chronic & critical conditions end of life care
- Accompaniment to appointments

Call for a chat to discuss your requirements.

We look forward to hearing from you.

01737 354821 info@aspensliveincare.co.uk www.aspensliveincare.co.uk

## P J Oliver & Son

Window cleaning  
House & Garden Maintenance  
Roof Repairs Guttering  
Painting & Decorating  
Ground works Fencing Hedge Cutting  
and Tree Work  
Also Pest control

Call Phil on 07722 158111  
Email [Oliviagarrett79@gmail.com](mailto:Oliviagarrett79@gmail.com)



## YOUR LOCAL FARM SHOP ON DENBIES WINE ESTATE

farm shop deli plant centre

Open daily 9.30 to 5.30 (5 pm in January) and Sundays 10 to 5 Free parking  
Closed between Christmas and New Year

**Local produce, Seasonal food, plants and flowers**

**Christmas orders : Free range turkeys; gift hampers**

We deliver veg bags and more to the local area on Tuesdays and Fridays  
see [www.vgfarmshop.com](http://www.vgfarmshop.com) or email [vegbag@vgfarmshop.com](mailto:vegbag@vgfarmshop.com) for details

**LOCAL • NATURAL • ETHICAL** 01306 880720 [www.vgfarmshop.com](http://www.vgfarmshop.com)



Warmest Christmas wishes  
and a happy & healthy  
New Year to  
all our local friends

Bernie & Denis Bailey, Mary & John Banfield,  
Jo Brown, Cathy Cain, Andy Diamond,  
Charlotte & Rustom Daruwalla, Rosemary Glover,  
Val & Mick Hallett, Anne & Tim Mathieson,  
Frances Presley, Stephanie Randall,  
Fiona Roberts-Miller, Rose & Stan Spence,  
Bernard Salsbury, Amy, Simon, Martha & Verity Ward,  
Sue & Ben Tatham, Elizabeth Watson,  
Judy & Brian Wilcox

Again this year we are sending our Christmas greetings through the parish magazine  
and giving the money saved on cards and postage to charity.  
The £320 raised by this MPM Christmas card has been split between  
St Michael's CoE Infant School and St Michael's Community Nursery

## Seasonal Sightings

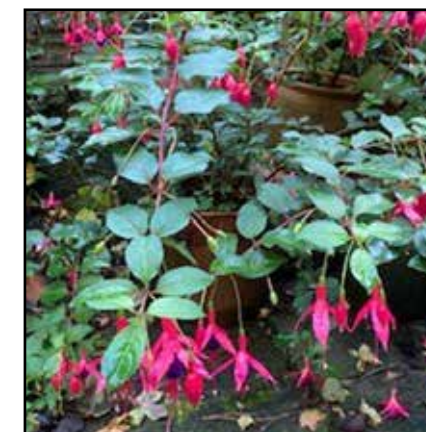
We would like to record first sightings of favourite flowers, birds and other surprising seasonal observations in the natural world in your surroundings.

Over time, this will create a monthly record of the changing seasons. Many of us have personal tales of how nature's timing is changing and collecting them together will be a way to document this.

Please send in your sightings with date and location and, if you can

a photograph, (attached as jpeg if possible) to [editor@micklehammag.co.uk](mailto:editor@micklehammag.co.uk)

To kick things off, these are fuschias going strong in a garden in Westhumble in November. I am aware fuschias can flower all year round in a warm region in theory but we have never had so many blooms so late in the year on every variety in my memory. The flowering appeared to be over in mid-September then in the last month or so, they have taken off again.



## Pilgrim Cycles

A sad message from Dave Hennegan of Pilgrim Cycles at Box Hill and Westhumble station:

'Sadly Pilgrim Cycles will be closing at the end of November as the high turnover required to produce a small profit in the bicycle world no longer works in the current environment.

My feeling is that the poor old station will remain empty and unloved, as it was before we came in 2013 which is a

very sad prospect since it needs to be loved and cared for and will deteriorate rapidly with no one to monitor and maintain it,

If anyone has plans or ideas that could make use of the premises it would be worth them talking to me.'

Dave has kept his station premises in good shape over a period of years now, much appreciated by residents. We wish him all the best for the future.



Can you translate this diagram into words? Say what you see.

Spear Pepper Garden	Cottage Shepherd Apple
---------------------------	------------------------------

Answer on page 26



# Mickleham Choral Society The Continental Europe Choir Tour

Gosh! It was a long time coming. The idea of Mickleham Choral Society travelling to Dorking's twin town in Italy, Sinalunga, for a series of concerts, was first mooted by bass singer Stephen Williams, before Covid-19 hit. He planted the idea with Juliet Hornby, conductor (and general pied-piper-esque inspiration) of MCS. The notion of leading her choir over the Channel took root. For Juliet, the idea of conducting joint Italian and English choirs singing Verdi, in an 18th century 'Teatro' in Tuscany was irresistible. Described as a 'small jewel' and 'a perfect example of Italian theatre', we were later to experience the ornate little opera house, in red and gold, with rows of audience boxes all the way around.

For me, the SATB pieces were not without difficulty. Luckily, professional musician Ambrosine Desoutter, invited fellow altos to her home on Sunday mornings, for a little practice of our part. Only five singers singing Alto 1 were coming to Italy (against 12 sopranos), so we all needed to perform. Ambie also had the dubious honour of 'Head of Logistics' as, among other skills, she speaks Italian. Finding somewhere for 40 singers plus Juliet, and our talented pianist Judith, along with some spouses, was no mean feat. Sinalunga is not big, but beautifully and neatly perched on a hilltop in true Tuscan style. MCS stayed at La Fratta, (hotel-cum-cattle ranch) a little way out, where there were sprawling grounds and beautiful views. There were herds of white cattle, pigs, chickens and goats, scattered amid a series of buildings, which had, quite frankly seen better days. Accommodation was variously described by choir members as 'interesting', 'random', among other vocabulary, and was a subject that provided much entertainment, in-jokes and a certain amount of character building, particularly for those who had agreed to share a twin room.

The Italian hospitality of the people of Sinalunga was very touching. They had been preparing for our visit since February and their welcoming enthusiasm was evident from our first evening, when we were invited to the town for supper, cooked by the locals, and laid out buffet-style on long tables. The warm-hearted Azzurra, acted as our interpreter and taxi driver, stopping off at her home to collect home-made quiches along the way. Having given us time for a welcome drink we were

unexpectedly invited to perform a 'taster' of things to come. Juliet made an inspired choice, as performing 'Sylvie', impromptu, in that relaxed setting, dispelled any lurking nerves. 'Sylvie', an American 'a cappella' song about a slave girl, is hummed and sung, some verses with body percussion, some without, tapping a left foot here, right foot there, soft clap here, chest tap there, hand-thigh swish somewhere else, (you get the picture), requiring so much concentration, that this particular choir member had her brain and co-ordination taxed to the limit.

Perhaps as we get older, we shy away from throwing ourselves in at the deep end, spend less of our time out of our comfort zone, to learn something we, at first sight, decided was totally beyond us. Rising to the challenge though, is uniquely satisfying when we eventually master the skill, against our own expectations.

When Juliet decided her choir would perform Verdi's 'Va Pensiero' by heart, in Italian, to the Italians (!), very few of us embraced the challenge and Juliet had to stand her ground. To claim that learning the words became the bane of some people's lives is perhaps not an exaggeration. I had the idea of having a special T-shirt designed for myself, totally black at the front (we performed all in black) but with a special A4 sized white section on my back, printed with the words of 'Va Pensiero', so that the Second Altos on the row behind me could benefit. No such shenanigans were needed however, and our Italian hosts and audience were wowed by us, singing by heart a piece, so familiar to them all, but which even they could not sing from memory. Thank you Juliet, for inspiring us to leap into that deep end to discover that indeed, we could swim.

Little did we know though, that Juliet had herself been working hard in the background, with her own 'pièce de résistance' performance for our concerts. With the assistance of the good-humoured, fun-loving Pauline, Juliet's Italian teacher, Juliet had prepared a speech or two, so that the local people in the audience could understand. She stood there, resplendent in a long dress that had been her mother's, in front of us on the stage, introducing each of our pieces of music in Italian, and I for one,



*Above and opposite: The choir at work and relaxing, the theatre and the accommodation at La Fratta; and our translator.*

have never been more proud of her. It was quite a lot of Italian and different on each night, and the audience loved her for it. As did the rather elderly priest at our first performance in the church in Sinalunga, who followed our concert with a surreal speech of his own, incorporating much about the Virgin Mary gazing down on the congregation over the various centuries (allegedly Limoncello had something to do with his performance and was perhaps why he was holding on to the pew so tightly). Limoncello, yes, thereby hangs a tale...

Said priest, along with the whole town, and, it turns out, Pauline, had put much preparation into the pre-concert church meal that they so generously provided for us. Delicious local cheeses and platefuls of meat, from salami to marinated wild boar and thickly cut roast pork, were accompanied by very drinkable local wines. Every conductor's nightmare, I am sure: a party-vibe accompanied by free-flowing wine BEFORE a performance. I am not sure if Juliet had time to eat anything at all, as she was making sure singers did not enjoy the local red too enthusiastically. Just when everything was calm, meal over, sobriety retained (just about), a group of men appeared from nowhere, armed with full bottles of Limoncello, understanding no English and with generous persuasive expressions on their faces. There was

much hilarity as Juliet, (rather akin to Whac-A-Mole), tried in vain to stop each chap in turn, from plying her precious vocalists with copious amounts of liqueur. The higher she reached to put her hand over the open bottle neck, the higher the men lifted the bottles out of her way. Only one MCS member though, who shall remain nameless, admitted to having consumed more than she was accustomed to.

The performance started with us in the audience. MCS had time to sit and digest while we watched our 'support act' perform. The Sinalunga choir 'Silence Please' had visited Mickleham over the summer, with their accompanist, Gianni, a big talented bear of a man, and Vanessa, the Maestra, one of the vocalists. Both in Mickleham Church and in Sinalunga, 'Silence Please' sang with precision and skill, at the top of their game. They had a particular style of fast-paced piece which suited their skills and at the same time, made us appreciate the range of light and shade in our particular repertoire which we performed in front of an audience of local people once 'Silence Please' had finished. Juliet conducted with style and panache as we sang. From the bouncy, jazzy 'Joshua fit the Battle of Jericho' to the lyrical 'Ave Maria', beautiful 8-part harmony 'Lux Aeterna' to the drama of 'Zadok the Priest', our performance had everything.

The second concert the following night, in the 18th century 'teatro', was the real triumph of the trip. The audience loved the ladies-only 'Sylvie', but, after the spirited performance of 'The Longest Time' (tenors and basses only), I felt the audience loved them more. Then, the choir of Sinalunga, called Flos Vocalis, joined MCS on stage, to sing together, finishing with 'What a Wonderful World', with Juliet at the helm. Then, the moment her vision was realised, conducting our joint 'encore', Verdi's 'Va Pensiero' with the whole audience joining in with the second half. What a finale!

The next morning, MCS took part in Sunday Mass in the huge church, lead by the priest (different priest!) amid a fug of candles and incense. Amazingly the whole sermon was repeated in English, just for us, and the huge congregation clapped at the end of our performance, which is perhaps not that usual in a Catholic Church.

That evening another big meal, this time at La Fratta, in what we think was a beautifully converted milking shed. Speeches were made, amid toasts and



words of thanks, goodbyes were said and it was really quite emotional as our unique shared experience was coming to a close. Choir members aged from 24 to 86 had relaxed, shared a drink and laughed together.

There was a certain air throughout the whole of our four-day visit that we did not quite know exactly what was going on. Just when we thought we knew, it would change. Developing our ability to just go with the flow though, is good for us, to just shrug, smile and say okay. I suspect for Juliet and Ambie it was not quite as simple as that, and at times presented certain challenging situations which they coped with calmly, with humour and love.

I cannot sign off without a word about Judith, our lovely pianist. Quiet, unassuming, yet totally crucial to the success of our trip, she arrived on time (some had nightmares her plane would get cancelled) and she had no idea the panic that ensued when, during a quiet moment one sunny afternoon, she went for a short walk around the grounds in the sunshine... and why shouldn't she? When word got out that nobody knew her whereabouts, there followed a missing person investigation worthy of

Miss Marple, 'who had seen her last?' 'Where?' and so on. The relief when she was 'found' was palpable. Judith, too, did not escape having to quietly cope with the unforeseen. The lighting for her on stage in the theatre on the Saturday night was really poor and she struggled to see her music: but did any of us notice any difference in her fantastic playing? Of course not: she is an absolute star.

Let us not forget the spouses who accompanied us and acted as drummer, photographer or taxi driver: you made our group feel like a real family, thank you. And to all the Italians who became our friends and 'twins': 'Grazie mille e arrivederci!'

Jacqueline Kenney



## A Confidential & Safe Space to Talk

Counselling • Mind & Body Healing  
Reiki • Relax into Nature Sessions  
Face to face/Online/Outdoors/Distance  
Supporting you with compassion and  
understanding through challenging times



Call Judith Cobby  
on 01306 882229  
or 07790 614448

[www.healing-inspiration.co.uk](http://www.healing-inspiration.co.uk)

## TIM LANGLEY

*Experienced craftsman*

ANTIQUE RESTORATION  
CABINET MAKING  
FRENCH POLISHING

Free estimates collection & delivery  
01372 457700 07960 486455

## Ballroom Dancing Latin American Dancing Professional Training [IDTA]

Private lessons on  
Tuesday afternoons and  
Sunday evenings

At Mickleham Village Hall  
Dell Close Mickleham Surrey RH5 6EE  
07748 867 732  
[vmvdancing@gmail.com](mailto:vmvdancing@gmail.com)



IDTA Qualified Teacher

## Julie Watts Family Law

AN AFFORDABLE AND EXPERIENCED PROFESSIONAL  
ALTERNATIVE TO TRADITIONAL SOLICITORS

- Divorce • Arrangements for children • Finances
- Court Proceedings

PROUD TO PROVIDE A DIFFERENT KIND OF SERVICE

- Affordable fees • Straight-talking advice
- Practical real support

Contact me for a consultation  
07808 572157 [juliewattsfamilylaw.co.uk](http://juliewattsfamilylaw.co.uk)

## Mike Palmer

Electrical Services

Part P registered electrician

From additional lighting and  
sockets to complete rewires  
Fully insured Registered with the NICEIC

07866 930483 [mike@mikepalmer.biz](mailto:mike@mikepalmer.biz)  
Boxhill Way Strood Green Betchworth RH3 7HY



Regular Lawn Mowing  
Lawn Care & turfing  
Pressure Washing  
Hedge Trimming  
General Garden Maintenance

[phil@philsmowingdorking.co.uk](mailto:phil@philsmowingdorking.co.uk)  
07905 160765



## KING WILLIAM IV

Hello friends and neighbours.

Can you believe that in December this year we have been at the King Bill for 10 years - so eventful.

After coming home from a month in Spain, Anne and I are feeling more rested than usual at this time of year. So we have decided not to fully close over January as we normally do, we intend instead to open Friday, Saturday and Sundays, so if you are out walking pop in for a beer and a pie.

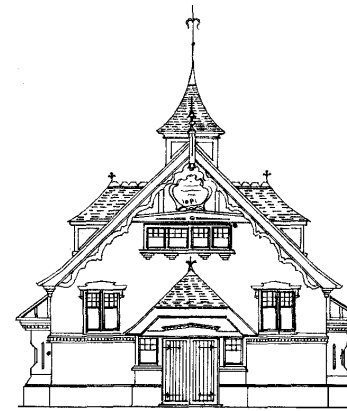
We look forward to seeing you all in our sparkly gardens for Carols on Friday 23<sup>rd</sup> December or possibly for your Christmas party.

We were especially proud to be featured in the Guardian newspaper as being one of the top 30 pubs for Sunday lunch in the UK a great achievement by the team.

Happy Christmas and all the best for 2023

Eamonn and Anne

Byttom Hill Mickleham 01372 372590 [www.thekingwilliamiv.com](http://www.thekingwilliamiv.com)



## Mickleham Village Hall available for hire

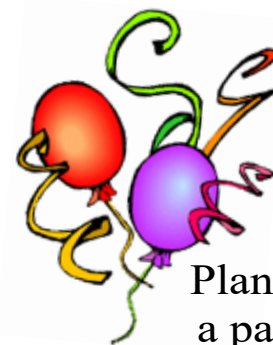
Hall bookings  
Table & chair hire

Deanna Darnell

07790 941 601

[bookings@micklehamvh.co.uk](mailto:bookings@micklehamvh.co.uk)

[www.micklehamvillagehall.org.uk](http://www.micklehamvillagehall.org.uk)



Planning  
a party?

Equipment  
available for hire

China ~ Cutlery

Electric urn

Equipment hire

Mary Banfield

01372 373912

[admin@micklehamvh.co.uk](mailto:admin@micklehamvh.co.uk)

## Community Directory

BOX HILL AND HEADLEY HEATH (National Trust) 01306 888793  
Lead Ranger – Meredith Westall (Merry) [meredith.westall@nationaltrust.org.uk](mailto:meredith.westall@nationaltrust.org.uk)  
07811 088097  
Friends of Box Hill – Chair Lyn Richards 01737 842889  
[lyn@mra.uk.net](mailto:lyn@mra.uk.net)

BOX HILL SCHOOL 01372 374814  
Headmaster – Cory Lowde  
[HMPA@boxhillschool.com](mailto:HMPA@boxhillschool.com)

DORKING CRICKET CLUB  
Chairman – Andrew Homewood [homewooda@hotmail.co.uk](mailto:homewooda@hotmail.co.uk)

DORKING GROUP OF ARTISTS  
Exhibition Secretary – Patricia Booth [patriciabooth100@gmail.com](mailto:patriciabooth100@gmail.com)

DORKING LAWN TENNIS & SQUASH CLUB

DORKING RUGBY CLUB 07789 176417  
Jim Evans [jim@flintcottage.net](mailto:jim@flintcottage.net)

THE GARDEN SHED 07759 646353  
Pauline Davis [paulinemdavis@gmail.com](mailto:paulinemdavis@gmail.com)  
07768 923088  
Susie Gowenlock [susiegowenlock@gmail.com](mailto:susiegowenlock@gmail.com)  
07585 742648  
Cathy Lee [cplee1603@gmail.com](mailto:cplee1603@gmail.com)

JUNIPER HALL FIELD CENTRE 01306 734501  
enquiries.jh@field-studies-council.org  
Head of Centre – Maddy Jones [m.jones@field-studies-council.org](mailto:m.jones@field-studies-council.org)  
Friends of Juniper Hall – Suzy Hughes 01483 281935  
[suzy@suzyhughes.co.uk](mailto:suzy@suzyhughes.co.uk)

MICKLEHAM CHILDREN'S PLAYGROUND ASSOCIATION 07767 891772  
Secretary – Sarah Parfitt [sarah@sarahparfitt.com](mailto:sarah@sarahparfitt.com)

MICKLEHAM CHORAL SOCIETY [www.micklehamchoral.org.uk](http://www.micklehamchoral.org.uk)  
THURSDAYS 8 - 10 pm – MICKLEHAM VILLAGE HALL  
Conductor – Juliet Hornby 01372 373106  
Secretary – Mike Benson [secretary@micklehamchoral.org.uk](mailto:secretary@micklehamchoral.org.uk)

MICKLEHAM OLD BOX HILLIANS FOOTBALL CLUB 01372 374745  
Secretary – John Atewell

MICKLEHAM PARISH COUNCIL [www.micklehampc.org.uk](http://www.micklehampc.org.uk)  
SEE WEBSITE FOR MEETING DATES 01372 379381  
Chairman – Rev'd David Ireland [rev.ireland43@btinternet.com](mailto:rev.ireland43@btinternet.com)  
[clerkatmpc@gmail.com](mailto:clerkatmpc@gmail.com)

Parish Clerk – Feena Graham  
MICKLEHAM PARISH MAGAZINE 01306 882547  
Editor – Sue Tatham [editor@micklehammag.co.uk](mailto:editor@micklehammag.co.uk)  
01306 884025  
Co-Editor – Charlotte Daruwalla [editor@micklehammag.co.uk](mailto:editor@micklehammag.co.uk)

MICKLEHAM VILLAGE HALL 01306 882547  
Chairman – Ben Tatham [chairman@micklehamvh.co.uk](mailto:chairman@micklehamvh.co.uk)  
07790 941601  
Bookings Manager – Deanna Darnell [bookings@micklehamvh.co.uk](mailto:bookings@micklehamvh.co.uk)



## ST MICHAEL'S CHURCH

*within the United Benefice  
of Leatherhead and Mickleham*

INCUMBENT — The Rev'd Will Perry 01372 372313

### PARISH PRIEST

The Rev'd Dr Sandra Faccini \* 01372 417664  
07763 488961

parishpriest@micklehamchurch.org.uk

\* Main working days: Monday, Tuesday and Sunday

### CHURCHWARDENS

Timothy Mathieson 07555 597163

TimothyMathieson@aol.com

Catherine Diffey 07790 473167

Mickleham@diffey.me.uk

### PARISH ADMINISTRATOR

Alison Wood 01372 376443

admin@micklehamchurch.org.uk

### PCC SECRETARY

Caroline Jones 07304271376

pccsecretary@micklehamchurch.org.uk

### TREASURER

Richard Siberry 01372 375303

pcctreasurer@micklehamchurch.org.uk

### ORGANIST

David Fishwick 0208 7732420

organist@micklehamchurch.org.uk

### WEDDINGS CO-ORDINATOR

Elaine Machin 01372 724972

weddings@micklehamchurch.org.uk

### BAPTISMS CO-ORDINATOR

Vickie Leney 01306 884054

baptisms@micklehamchurch.org.uk

### FUNERALS ORGANISER

Brian Wilcox 01372 374730

dbrianwilcox@btinternet.com

### WEBSITE MANAGER

Kelvin Pritchard 07770 280410

website@micklehamchurch.org.uk

### PCC ECO GROUP

David Kennington 01372 36230

davidkennington144@gmail.com

**www.micklehamchurch.org.uk**

*For information about services for other  
denominations see website pages.*

*Search on 'Churches Together Mole Valley'*



## CALENDAR FOR DECEMBER

1	Thursday	12.30 pm	Autumn Soup Lunch in the village hall
3	Saturday	10 am 11 am to 2 pm	Coffee Morning at Westhumble Chapel Community Nursery's Christmas Fair at the village hall
4	<b>SUNDAY</b>	9.30 am 11 am	Children's workshop at St Michael's School Christingle Service in church
6	Tuesday	7 pm	Prayer Group Compline in church
10	Saturday	9.15 am 2 to 4 pm 7 pm	Garden Shed Christmas Decoration Workshop Christmas Cafe at Westhumble Chapel Talk <i>Sir James Jeans</i> by his son Christopher Jeans at Westhumble Chapel
11	<b>SUNDAY</b>	8 am 10 am	Holy Communion in church Holy Communion in church No Matins at Westhumble Chapel Choral Society's Carol Party village hall
16	Friday	7.30 pm	Holy Communion in church
18	<b>SUNDAY</b>	8 am 10 am 6.30 pm	Holy Communion in church Holy Communion in church Carols by Candlelight in church
19	Monday	3 pm	Tea@3 Host to be confirmed
20	Tuesday	6 pm	Carol Singing in the Chapel Ruins
22	Thursday	7.30 pm	Ex-Crew Get Together Stepping Stones
23	Friday	7.30 pm	Carolling round the pubs starts at Stepping Stones
24	<b>CHRISTMAS EVE</b>	4 pm 11.30 pm	Crib Service Westhumble Field Holy Communion
25	<b>CHRISTMAS DAY</b>	10 am	Christmas Day worship for all with Holy Communion

## JANUARY

1	<b>SUNDAY NEW YEAR</b>	10 am	Informal Family Communion
3	Tuesday	7 pm	Compline in church
8	<b>SUNDAY EPIPHANY</b>	10 am 11.30 am	Holy Communion Matins in Westhumble Chapel
<i>Copy deadline for February parish magazine</i>			
15	<b>SUNDAY</b>	8 am 10 am	Holy Communion Holy Communion
16	Monday	7 to 9 pm	Alpha Course starts at Chapel Farm
17	Tuesday	7 pm	Compline in church
21	Saturday	9 am	Women's Breakfast at the Stepping Stones
22	<b>SUNDAY</b>	8 am 10 am	Holy Communion in Westhumble Chapel Holy Communion in church
28	Saturday	9 am	Men's Breakfast at the Stepping Stones
29	<b>SUNDAY</b>	10 am	Morning Worship in church



**Dates for your diary**

Saturday 4<sup>th</sup> February

Live Theatre returns to Mickleham



## MEMBERS OF THE PAROCHIAL CHURCH COUNCIL

Sarah Blake	Elaine Machin
Mark Day	Tim Mathieson
Andy Diamond	Beverley Mehta
Catherine Diffey	Elizabeth Moughton
Caroline Jones	Kelvin Pritchard
Vickie Leney	Richard Siberry

## ST MICHAEL'S CHURCH COMMUNITY GROUP COMMITTEE

Mary Banfield	01372 373912 mgbbmw@aol.com
Kay Cain	07736 281752 kay_jay@hotmail.co.uk
Mark Day	07852 117249 mickleham@hotmail.com
Andy Diamond	07789 775354 diamo1@hotmail.co.uk
Frances Presley	01306 882473 jasempres@gmail.com
Amy Ward	07709 199292 amycatrionaward@gmail.com

## ST MICHAEL'S CHURCH COMMUNITY GROUP

### HELPING HANDS INCLUDING FOOD FOR FRIENDS

*A service for all residents of Mickleham and Westhumble*

Examples of services we offer:

- Essential shopping / collection of prescriptions
- Changing library books
- Small tasks: eg changing fuses, altering clocks etc
- Dog walking
- Visiting / befriending
- Home-cooked meals for local families going through difficult times

Requests to:

Will Dennis 07903 842674 [wdwdennis@icloud.com](mailto:wdwdennis@icloud.com)  
(who can put requests onto WhatsApp)  
Mary Banfield 01372 373912 [mgbbmw@aol.com](mailto:mgbbmw@aol.com)  
Frances Presley 01306 882473 [jasempres@gmail.com](mailto:jasempres@gmail.com)

*More helpers needed – please contact  
Frances if you can spare some time.*



# Community Directory

Continued from page 13

MICKLEHAM & WESTHUMBLE BADMINTON CLUB  
Membership Secretary Sarah Blake tinkerbell0044@hotmail.com

MICKLEHAM CRICKET CLUB  
Membership contact Will Dennis 07903 842674  
will@micklehamhallfarm.co.uk

MICKLEHAM & WESTHUMBLE HORTICULTURAL SOCIETY  
Chairman – David Kennington 01372 362309  
www.surreycommunity.info/mwhs davidkennington144@gmail.com

MICKLEHAM AND WESTHUMBLE LOCAL HISTORY GROUP  
Chairman – Ben Tatham 01306 882547  
ben@thetathams.co.uk  
www.micklehamwesthumblehistory.co.uk

MOLE VALLEY DISTRICT COUNCIL 01306 885001  
Councillor Elsie Rosam 01306 885695  
elsierosam29@gmail.com

THE ARTS SOCIETIES (FORMERLY NADFAS)  
Betchworth – Mary Venning 01306 883301  
Dorking – Sue Tatham 01306 882547  
Leatherhead – Sarah Sheridan 01306 883699

ST MICHAEL'S CHURCH OF ENGLAND (A) INFANT SCHOOL 01372 373717  
info@stmichaels-dorking.surrey.sch.uk  
Friends of St Michael's School – friendsofstmichaels2017@gmail.com

ST MICHAEL'S COMMUNITY NURSERY  
WEEKDAY MORNINGS – MICKLEHAM VILLAGE HALL  
Supervisor – Hilary Budd 01372 361021  
stmichaelsnursery@btinternet.com

SURREY COUNTY COUNCIL 03456 009 009  
Councillor – Hazel Watson 01306 880120  
hva.watson@btinternet.com

SURREY WILDLIFE TRUST 01483 795440  
info@surreywt.org.uk

TREE WARDEN  
David Kennington 07546 952521  
davidkennington144@gmail.com

WESTHUMBLE NEIGHBOURHOOD WATCH  
Lead Co-ordinator – David Allbeury 07860 227451  
westhumble.neighbourhood.watch@gmail.com

WhatsApp Group  
Will Dennis will@micklehamhallfarm.co.uk

## ADDITIONAL CONTACT INFORMATION

CITIZENS ADVICE  
Dorking – Lyons Court 01306 732302  
Leatherhead – Swan Mews High Street 01306 732301

CRIMESTOPPERS 0800 555 111  
POLICE Non-emergencies 101

(often quicker to make online report) <https://report.police.uk/>

Neighbourhood Specialist Team – Dorking Rural East  
General enquiries molevalley@surrey.pnn.police.uk

NHS Urgent and emergency care 111

## Babysitting by local youngsters

Those listed below are at least  
14 years old.

Gracie Owen \*\*07790 900649  
Annabelle Prosser\* 07443 634179  
Maisy Presley\* 07720 657327  
Martha Pearce 07514 080005  
Rory Lee \*\* 07973 360950  
Ellie Kim 07773 395575  
Chelsea Edwards 07834 695816  
Edward Moran 07740 088124  
Daisy Armitage \*\*07580 473812  
Olivia Newby 07703 110363

\* Holidays only  
\*\* Parent's mobile number

If you would like to add your  
name to this list please get in  
touch with Sue Tatham

01306 882547  
editor@micklehammag.co.uk  
No Charge

## Advertising in the Parish Magazine

Please contact  
Sue Tatham (as above)  
Small ads: a nominal fee is  
charged for ads where items or  
services are bought or sold.

We have been advised to print  
the following reminder:  
*We cannot guarantee the  
quality of the goods and  
services offered by our  
advertisers.*



## Westhumble Bonfire and Fireworks

After two quiet years, the Westhumble Guy Fawkes celebrations returned to the field with a vengeance. For many weeks an army of diligent builders gathered sticks, twigs and giant branches from Ashcombe Woods and the North Downs Way, to create a truly formidable structure. This year we had some new building recruits with the youngest being six months old.

The making of the Guy was a community event, as children (who had gathered for a pumpkin carving party kindly hosted by Kay Cain) collected leaves to stuff into his body and legs. Miranda Masters and I negotiated dressing the poor chap with clothes donated by kind husbands who were now shivering with cold; minus their shirts and trousers! Here he is taking a well earned rest before his big day.

Remember, remember the 5th of November? Well hundreds of revellers did as they trudged into a drizzly, soggy field to watch the Guy being processed down Adlers Lane, followed by a marauding group of excitable children.

The soup and hot dogs were delicious and greatly appreciated by all, and the

hum of happy chatter was palpable as we waited in earnest for the bonfire to be lit and the fireworks to be set off. The bonfire roared into life and flames licked up the inside, although the outside needed a little bit of negotiation to get burning, but burn she did.

The fireworks were absolutely phenomenal and I heard many people exclaim that they were much bigger and louder than they had dared to expect. Even when people thought they had ended, they just kept coming. A rousing cheer was given as the twinkling lights faded over the field. I hear the cows enjoyed the embers of the bonfire the next day, using these to keep warm in the continued drizzle.

Thanks and congratulations to all who contributed to the success of the party, to all the bonfire builders, to all those who provided the refreshments and to Neil Mason, helped by Clint Geyle, for the brilliant firework display. Special thanks to Neil for providing the tractor and the refreshments for the builders over the course of the weeks.

Elly McIlwraith-Jay

## Community News

Welcome to Katie de la Rosa and Michael Haddocks and their baby daughter Nova who have moved to School Lane; and to Tanya Mountford, her daughter Natasha and her two grandsons Mason (8) and Jaxson (3) have moved from Reigate to School Lane.

Farewell to Sue and David Judd who are moving from Camilla Drive to Dorking. Welcome to Johnathan and Lynn Papworth who are moving to Camilla Drive from Dorking.

Congratulations on the birth of Beatrice, a fourth granddaughter for Cathy Cain of Pilgrims Way. Proud parents are Cathy's son David and Amy.

## Beating the Bounds

A postscript to last month's report of 'Beating the Bounds'. Thank you to Mr Wates and his gamekeeper Kevin for their cooperation enabling the group to cross Birchingrove Farm. This is private land and there is no footpath.

Roger Davis is happy to supply a map of the route to anyone who would like one. Email rogermdavis@icloud.com







Kath with her great granddaughter Emilia

## Kath Crouch 1942 - 2022

Keith worked on farms in Kent where their three daughters were born. While the girls were still young the family moved to Bradley Farm in Dorking. Kath enjoyed gardening, cooking and baking. Her enjoyment has passed down through the generations from daughters to grand- and great grandchildren. She also loved animals and always had cats, another tradition which has passed down the generations.

The family enjoyed many holidays in the UK. They had a caravan which they would tow to the New Forest among other places. Kath even made it to the Isle of Wight for a holiday with her grandchildren. This was as close to going abroad as she wanted to be.

When Keith retired from farming due to ill health they moved to Mickleham where Kath continued to care for him. They enjoyed days out on the bus to the coast, the cinema and meals together. They were married for 62 years and were inseparable. Her family meant everything to her. She was there for the happiest times in their lives and also for the most difficult.

We send Keith and the family our warmest wishes and deepest condolences.

## Jim Cattermole

We were saddened to learn of the death of Jim Cattermole of Burney Road on 13<sup>th</sup> October. We send warmest wishes and deepest sympathy to Ann and the family.

## Derek Swaine

Very sadly, Derek Swaine died on 16<sup>th</sup> October 2022. Some readers will remember him. He had moved with his first wife Brenda to Burney Road, Westhumble from Bookham. Brenda died in 1998. He married Margaret Ward in 2006 and they moved to Derbyshire in 2008. We send our deepest sympathy to Margaret.

## Andreas Florides

We send sincere condolences to Serena Florides, former proprietor of Rose's Stores, following the death of her son Andreas, aged 46.

## Review of Polling Stations

'In the latest review of polling stations, MVDC has reinstated the Stepping Stones pub as a polling station after previously saying Westhumble people would use Mickleham Village Hall to vote'.



Fireman helping with the clean-up after the fire

the development of the town and manor of Dorking between the 1280s and 1380s. These and many other items of local interest can be found at [dorkingmuseum.org.uk/dorking-museum-shop/](http://dorkingmuseum.org.uk/dorking-museum-shop/)

## Mickleham & Westhumble Horticultural Society Bulk Discount Compost Order

Following on from the success of the autumn compost order, the Mickleham & Westhumble Horticultural Society would like to invite all its members to order more this spring, perfect for preparing your beds and borders for the coming growing season.

As before, by coming together to place a bulk order we are able to get a significant discount on Country Natural (CN) Composted Stable Manure and Melcourt SylvaGrow (MS) Multi-Purpose Compost (peat free).

CN Composted Stable Manure  
For mulching borders, veg beds, trees and shrubs (covers approx. 2m<sup>2</sup>)

MS Multi-Purpose Compost  
(peat-free) 50 litre bag  
Ideal for raising seeds and cuttings, potting on, containers and as a growbag.  
We are currently unable to give prices as they are due to increase on 1<sup>st</sup> January 2023. We will circulate an email to all

members on our mailing list once the prices are confirmed. This will still be far cheaper than at the garden centre! Please contact Lucy Adshead ([lucyadshead@lapurple.co.uk](mailto:lucyadshead@lapurple.co.uk)) for an order form and payment details. We do require payment in advance to enable us to place the order, so please note that if you have not paid by the last order date, unfortunately your order cannot be included.

Once we have placed the order, you will be sent an email confirming a date and instruction for collection from the Mickleham Village Hall car park. The last order date for Spring delivery is 1<sup>st</sup> February 2023, aiming for collection on Saturday 4<sup>th</sup> March 2023 (this date can only be confirmed once the order has been placed).

If you would like to join the Horticultural Society to take advantage of this fantastic offer, see next column.

## Membership Information

Annual subscriptions of £5 per household are due on 1<sup>st</sup> January 2023. We are encouraging payment by standing order or online bank transfer although we will still accept cash. Membership fees enable us to hold our popular shows in Mickleham Village Hall each year and all members are entered into a prize draw at the AGM for garden vouchers of £50.

For further information please contact the Membership Secretary, Judith Long: [judith.long2@btinternet.com](mailto:judith.long2@btinternet.com) 07904 160961. New members always welcome!

## 2023 Show dates:

Spring Show and AGM - Saturday 22<sup>nd</sup> April

Village Show – Saturday 16<sup>th</sup> September

## Mickleham Parish Council Report November 2022

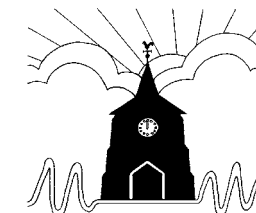
Among the matters which arose from the minutes of the previous meeting was the fact that the defibrillator has been serviced and is now back in action, sited at the village hall. The traffic hazard caused by the temporary bollards erected following the van fire on the Old London Road has finally been removed, following considerable lobbying by the parish council and Councillor Hazel Watson. The yellow lines which were not originally completed by the entrance to Fredley Park and outside Old House have now been finished; and as a result of the Mole Valley Boundary Review Working Group the new ward name for this area will include Mickleham, Westcott and Oakwood with the result that Mickleham will now find itself at the northern end of the ward.

Speeding through the village on the Old London Road remains an issue and readings from the VAS camera indicated a considerable number of vehicles which exceeded the 30mph speed limit. Angela Ireland, coordinator of the Community Speed Watch Group

presented a report showing that a number of vehicles also exceeded 35mph and had been caught on camera and reported to the police. It was agreed that Community Speed Watch does have a valuable deterrent effect, as drivers tend to be more cautious on stretches of road where they have encountered Speed Watch in the past. The group currently operates approximately once a month and an appeal was made for additional volunteers in order to facilitate the aim of operating at least once a fortnight.

PC Sadler, Police Community Support Officer, attended the meeting and informed us of a few regrettable offences which had taken place recently in or near Mickleham. Traffic noise is a continuing issue, but he confirmed that an attempt to get one of the new Noise Monitoring cameras trialled seems to have failed. One thing that was highlighted is how useful a ring doorbell is for added security.

This meeting was preceded by a meeting of the Mickleham parish council as corporate trustees for the



Children's Recreation Ground Trust. Sarah Parfitt, chair of the Mickleham Playground Committee attended and gave a report on the playground. The equipment remains in good condition thanks to the continuing efforts of the committee which includes a number of parents of children who enjoy the excellent facilities. There is an urgent need for a new trustee for the committee and for someone prepared to act as secretary, following the retirement of Heather Bourne. If you feel you could play your part in ensuring the future of this excellent facility, do please contact Sarah Parfitt on [sarah@sarahparfitt.com](mailto:sarah@sarahparfitt.com). Please do not assume that someone else will volunteer but step up yourself. The committee only meets 3 or 4 times a year and meetings take place in the Running Horses. Sarah and her committee were thanked for the incredible job they do in maintaining our first class playground, which is the envy of other much larger communities.



## Fire damages Dorking Museum

In the early hours of Tuesday 12<sup>th</sup> October there was a fire in one of the buildings next to Dorking Museum which spread to the museum's roof. Luckily the Emergency Services were on the scene very quickly and managed to move the clothing exhibits out of the way of their hoses and covered up all the artefacts on the wall, so damage to the clothing and artefacts is minimal. The Mayflower model has been taken away for repairs by Dorking Men's Shed.

The museum will be closed for an indefinite period of time while the building is sorted out. This includes drying out the floors, dealing with smoke smells, redecorating, and refitting, none of which can not be completed until the roof is repaired. This may take some time as the roof is shared with the flat where the fire started.

### David Burton from the Museum writes...

Until we re-open, some limited activity may be possible, so please check the Museum's website or social media pages (Facebook, Twitter, Instagram) or other listings sites for Museum activities and news of future opening. Although the building might be closed, the Museum's online shop is open for the sale of new and vintage books, postcards, maps and other items relating to Dorking and the surrounding area including books from The Cockerel Press, the Museum's own publishing arm. Two recent contrasting publications are Dorking Museum's *Box of Extraordinary Delights* by Peter Brown, an innovative action book for children and families with a range of activities and free on-line extras; and *A Hundred Years on a Medieval Manor* by Susannah Horne, exploring





## CARPET REVIVING CARPETS & UPHOLSTERY IN SURREY

Covering Dorking & all surrounding areas

We clean to a professional standard using eco-friendly chemicals and the latest equipment.

Offering a thorough survey, clean and customer satisfaction. Certified and insured.

Call 01306 740035 / 07747 122128  
or visit [www.carpetrevival.co.uk](http://www.carpetrevival.co.uk)  
to book a free home visit/quotation

## STEVE LAWRENCE

### PLUMBING HEATING ELECTRICS

Boiler installation, maintenance and repair

Based in Mickleham Local references  
30+ years' experience

07760 266718  
[stevenlaw37@hotmail.com](mailto:stevenlaw37@hotmail.com)

## Vivien Cresswell Made-to-measure Soft Furnishings

Curtains Roman Blinds Cushions

Extensive range  
of fabrics



01737 843858  
[info@cresswellscurtains.co.uk](mailto:info@cresswellscurtains.co.uk)  
[www.vivienecresswell.co.uk](http://www.vivienecresswell.co.uk)

## Rowlatt Garden Services

# RGS

EST.1985

**Gardens large and small  
we maintain them all**

All aspects of private and commercial garden  
and estate maintenance landscaping undertaken  
Fencing grass & hedge cutting

Telephone: 01737 841524 Mobile: 07887 838666  
References available upon request



Joseph

## De Decorators

• Painting • Decorating • Wallpapering • Plastering • Tiling

Mickleham based 40 years' experience

01372 372331 07973 358 932

## Suitable items for the foodbank collection

Tinned veg / tomatoes / soup / sauces / baked beans  
Powdered milk / UHT milk (green and blue only)  
Rice pudding / long life sponge puddings  
Coffee / tea bags / long life fruit juice  
Pasta / rice / pulses / instant mash  
Jam / honey / marmalade / spreads  
Sugar (500g bags only)

Washing-up and cleaning products  
Tissues / paper towels / tampons  
Men's / women's toiletries  
Laundry products  
Nappies  
Pet food

**Please do not include  
out-of-date items or those  
that require refrigeration**



### LOCAL FOOD BANK COLLECTION POINTS

#### MICKLEHAM

Garden Corner off Old London Road  
Mary Banfield 01372 373912

#### WESTHUMBLE

St Anthony Pilgrims Way  
Sue Tatham 01306 882547

**Robust plastic carrier bags wanted for delivering parish magazines and food bank items.  
Please leave at food bank collection points – see above**



### GARDEN SHED EVENTS

## Christmas Workshop MAKE A WREATH or TABLE DECORATION

### Saturday 10<sup>th</sup> December

Mickleham Village Hall 9.15 am - 12.30 pm  
Cost £35 Refreshments included - Booking essential  
See our website for details [www.gardenshed.club](http://www.gardenshed.club)  
Any Questions Pauline Davis 07759 646353  
or [paulinemdavis@gmail.com](mailto:paulinemdavis@gmail.com)



### Garden Shed Events Spring 2023

Dates for your diary  
Monday 20th February  
The Fantastic World of Seeds with Andy Morriss  
Monday 20th March  
The Productive Greenhouse with Barney Millard  
Sunday 23rd April  
Willow Weaving Workshop: Make a Plant Support with Nicki Rowling

## Eco group move a mountain

In the children's book Treasure Island, Captain Flint commands the pirate ship Walrus and together with First Mate Billy Bones and Quartermaster Long John Silver they form a formidable team that plunder the seven seas and amass a vast fortune. Our own Captain Flint - Eric by name - commanded the eco-forces available to him one weekend in October and while moving a vast compost heap, a great task in itself, sadly did not find any lost treasure although I heard it said that the compost itself was black gold. Said compost was redistributed along the line of the new hedge-to-be alongside Eastfield Drive, where it will provide much needed

nutrients as well as a welcome mulch to reduce competition from grass during establishment. Scurvy was kept at bay by generous helpings of hot dogs and cakes and tea, provided magnificently by Mary (Captain's wife) and sundry galley slaves! The male crew were not to be trusted with machines and were set to work on digging and hauling. By contrast the ladies mastered the use of the mechanical tracked wheelbarrows and kept the show on the road all day. A day and a half of superb community effort and nary a keel-hauling or a cat-o-nine-tails needed. Many thanks to all who helped.

Long John (Kennington)



Surrey Country Hounds



Professional dog walking and pet services covering the Surrey Hills including Leatherhead, Dorking and surrounding areas.  
Offering group, individual and pet visits.

t. 07703 448187 | e. [surreycountryhounds@gmail.com](mailto:surreycountryhounds@gmail.com)  
@surreycountryhounds @surreycountryhounds Message us on WhatsApp  
[surreycountryhounds.com](http://surreycountryhounds.com)



## Do you need a plasterer?

Over 25 years' experience working on extensions, renovations, new-build and conversion projects for builders and domestic customers alike.

Our work is to a high standard and we are fast. Give Chris a call for a free no obligation quotation.



**CHRIS C GUY  
PLASTERING LTD**

ALL ASPECTS OF INTERNAL & EXTERNAL PLASTERING  
07740 860560 chrisguyplastering@gmail.com

**We provide the best possible care for your feet**

**Book your appointment:  
01372 454583**



**Bookham  
Chiropody & Podiatry Clinic**  
Diagnosis, Expert Treatment & Professional Care  
for Your Feet

**29 High Street, Great Bookham KT23 4AA**  
[www.bookhamchiropody-podiatry.co.uk](http://www.bookhamchiropody-podiatry.co.uk)

## Domestic Appliance Repairs

30 years' experience repairing and installing  
all gas and electric domestic appliances



- Cookers Microwaves
- Dishwashers
- Washing machines
- Fridges / Freezers
- Water coolers
- Coffee machines
- Tumble dryers

**Contact: Andy 07895 719706**  
[andy@kirksdomestics.co.uk](mailto:andy@kirksdomestics.co.uk)



07871 051661 / 01372 458616  
[timskerrittgroundworks.co.uk](http://timskerrittgroundworks.co.uk)

**TimSkerritt**  
LANDSCAPE & GROUNDWORKS

## Turn your vision into a reality

Tim Skerritt Landscape & Groundworks offers a comprehensive range of services to both commercial and domestic clients across Surrey.

From hard landscaping to extensive site excavations, we offer a high quality, honest, reliable and competitively priced service, guaranteed to meet all your needs. Contact us today to find out more.



**SURREY HILLS  
HEATING LTD**

**DOMESTIC BOILER SERVICING  
AND BREAKDOWN**

**OIL, LPG & GAS BOILERS**

Call Dathan on: 07944 575970  
[sales@surreyhillsh heating.co.uk](mailto:sales@surreyhillsh heating.co.uk)  
[www.surreyhillsh heating.co.uk](http://www.surreyhillsh heating.co.uk)



## PAINTING DECORATING

ANDREW CLARK 07800 796 737

INTERIOR & EXTERIOR • CARPENTRY • HANDYMAN

## CRYPTIC DELICACIES

Last month's golden squares could be made into BRASSICA, the family that includes TURNIPS, MUSTARD, BRUSSELS SPROUTS, KOHLRABI, and CABBAGE. I had just thought of brassicas as being those vegetables that taste cabbagey but there are a load that don't fit that description, including roots like swede and turnip, and mustard. They are also known as cruciferous vegetables, not because they crucify you with flatulence but from the shape of their flowers, with four petals in the form of a cross. They are high in vitamin C and soluble fibre as well as all sorts of other valuable nutrients. These vegetables also contain organo-sulphur compounds that people find either bitter or tasteless depending on the make-up of their tastebuds (this genetic trait is so strong that it was used

as a paternity test before the advent of DNA matching). The sulphur in these compounds is also a strong contributor to the noxious fug that is such a festive tradition after Christmas dinner.

**10 Before an afterthought, change myself into root vegetables (7)**

**TURNIPS**

'change' = TURN, 'myself' = I, 'afterthought' = PS

**15 Mum erases nonsense without me finding a rubber (7)**

**MASSEUR**

Anagram ('nonsense') of MUMERASES without ME

**21 Isadora joins with Edna in periodically going back for anoraks (5)**

**NERDS**



**remembering wonder**  
*seeing the world anew in a pandemic*

Photographs and text by Andrew Tatham

"A brilliant book about the recent pandemic. Andrew Tatham's visual and verbal journey through the Covid-years will resonate powerfully with all of us who experienced them. Thought-provoking and memorable."  
WILLIAM BOYD

"Wonderful images throughout. It certainly does, as you say, 'hold out hope for the future', hope much needed in the present." MELVYN BRAGG

Around the time of the first lockdown in March 2020, Andrew Tatham started taking his government-endorsed daily exercise accompanied by his camera. On his walks in the Norfolk countryside, he photographed sunsets and silhouettes, trees and flowers, beaches and clouds, doors and disappearances, our lizard overlords and a nude tractor. All these he sent out to his friends as a way to keep in touch and transport them even but briefly into a new view or thought outside of their current being. Always trying to surprise, he also kept that aim for the words that accompany the pictures, his favourite comment from this book's first readers being "I sometimes looked at a picture and

covered your text to try and imagine what you were going to write... failed every time." The result is a mix of memoir, contemplation and joy with 203 photographs in full colour. If you want to see the good in the world that often seems to get lost in the day-to-day, then this book is for you.

**ABOUT THE AUTHOR**

Andrew Tatham is an artist and historian who, after degrees in Chemistry and Computer Science and time as a TA infantry officer, a hop chemist in the brewing industry and an IT lecturer in a College of Nursing, succumbed to indulging his fascination with human beings and how they live their lives, and with finding ways of depicting those lives from new angles.

**remembering wonder** is £14, available from Amazon or via Sue Tatham – the latter has the advantage that you can have a good look before you buy and the author gets to keep substantially more of the book price (and will thus donate £2 a book to St Michael's Nursery). Any queries, please contact Andrew: [andrew@groupphoto.co.uk](mailto:andrew@groupphoto.co.uk)



Reversing 'Isadora' + 'Edna' gives you **aNdE aRoDaSi** from which you take letters periodically. 'Anorak' comes from the Greenlandic word 'annoraaq' whereas 'parka' comes from the Aleutian Islands on the other side of the American continent. Neither place is renowned for its trainspotting so this must have developed independently from the clothing.

**29 Truss burps and loses in battle with EU growth coalition? (8,7)**

**BRUSSELS SPROUTS**

Anagram ('in battle') of TRUSS BURPS LOSES – does anyone remember who Truss was? Given the discombobulating nature of the accelerating news cycle, I could forgive you if you thought the answer was REMAINER LETTUCE.

**4 Suggestion for someone setting out to make fires (4,2)**

**LETS GO**

Double definition – the first part being LET'S GO, and LETS GO is a horrible euphemism for the act of removing someone's livelihood (though still preferable to 'terminates').

**5 How to find you're allergic to being poor and having untoward relations with your family while avoiding Iraqi National Congress (4,4)**

**SKIN TEST**

'poor' = SKINT, 'untoward relations with your family' = incEST, without the INC for that famous organisation. This is a very clunky clue but I kept it because I was so tickled by the surface reading with the extraordinary idea that (a) you would need a skin test to work this out, and (b) that someone had developed such a test. But then as you can see from previous winners of the Ig Nobel Prize, anything is possible in this world – for example, in 2020, the Psychology prize was for a method of identifying narcissists by examining their eyebrows, and the Materials Science prize was for showing that knives manufactured from frozen human faeces are not effective tools for skinning or butchery.



**10 Year**  
Manufacturer's  
warranty available  
with any new boiler  
Oil, LPG and Gas Registered • Consult • Design • Install • Maintain

**SEENERGY**  
INNOVATIVE ENERGY SOLUTIONS

Call for a free quote on  
**01306 735499**  
[www.seenergy.co.uk](http://www.seenergy.co.uk)  
[enquiries@seenergy.co.uk](mailto:enquiries@seenergy.co.uk)

24 HOUR SERVICE  
Best Buy  
Which?  
Gas Boilers September 2018

**Get IT Fixed, Get IT Connected**  
Expert Repair & Maintenance



Brockham based. No call out charges. Fully transparent quotations with no hidden costs. We make technology work for you.

Call us now on **01737 845980** ChalkHill Systems  
[www.chalkhillsystems.co.uk](http://www.chalkhillsystems.co.uk)

**M & R BUTLER**

- GENERAL HOUSE MAINTENANCE
- EXTERNAL & INTERNAL DECORATING
- BESPOKE CARPENTRY
- LOCAL REFERENCES
- 40+ YEARS EXPERIENCE

07776256131 / 07896015771



**TONY WINCH**  
CARPENTER, JOINER  
& CABINET MAKER  
[www.tonywinch.com](http://www.tonywinch.com)  
01306 742373  
07969 016 924

**Building Plans**  
For home improvements & extensions  
Including planning & building regulations  
Fast efficient service at competitive rates

**MICHAEL LLOYD** CEng MICE  
For free consultation:  
Phone: 01483 205479 or 07958 791 402

**RWP**  
Extensions and alterations often require a  
Structural Engineer

**Robert Wynter & Partners Ltd**  
01306 879875  
Book House Vincent Lane  
Dorking RH4 3HW

**remedial roofing**  
For people with roof issues and deficiencies

- New roofs – slate & tiled roof specialists
- All roof repairs moss removal & gutter clearance
- Flat roofs traditional felt & GRP fibreglass
- New uPVC Fascia soffit & guttering

Obtain an up-to-date report of remedial roofing on [www.checkatrade.com](http://www.checkatrade.com)

**ALL WORK GUARANTEED**  
Call us today for a FREE quotation on:  
01306 304736 | 07852 833802  
[info@remedialroofing.co.uk](mailto:info@remedialroofing.co.uk) [www.remedialroofing.co.uk](http://www.remedialroofing.co.uk)




At nursery this half term we have included lots of activities that help to develop children's pre-writing skills. A popular activity is 'table painting'. We always have an easel available for 'free choice' painting, but table painting is not only great for fingertip painting, it is also a whole bodywork out as children stretch out to 'smush' different paint colours together making sweeping swirl whole arm movements. We love to see children becoming truly engrossed in their very sensory play, some often stay at this activity for well over half an hour, they might go and rinse



## Whole Bodywork and 'Smushing'

their hands. only to return and select different squeeze paint colours and start exploring all over again. It is a great activity for all ages and abilities in the nursery. Some enjoying creating, then smoothing the paint to create a new 'canvas' some enjoying writing their name or 'drawing' with their fingertip and wanting a 'print' to be taken before they start again. Some of our older children have enjoyed creating 'spider webs' threading and knotting string to make Halloween decorations.

We are now very much looking forward to Christmas. Our Nativity this year will be 'The Sleepy Shepherd' chosen for this year's cohort of somewhat wandering 'off stage' sheep! It is however a particular privilege to work with little children at this time of year, to join with them and delight in the magic of Christmas.

Hilary Budd



## Photography competition Fanny Burney's Surrey

Frances 'Fanny' Burney (1752-1840) lived and wrote in Surrey and was inspired by the area's beautiful countryside and gardens in the Mole Valley area, particularly around Bookham, Mickleham and Box Hill. To celebrate Fanny and the area she loved, Surrey Libraries and Surrey Heritage are pleased to announce their Photography Competition 'Frances Burney's Surrey'. They would be delighted to receive your photographs of places or buildings

around Surrey, especially in the Mole Valley area, which were associated with Fanny Burney, or which inspire you today. The winner will receive an Amazon voucher for £50. Two runners-up will each receive an Amazon voucher for £25.

The competition is open from 25<sup>th</sup> October 2022 until Sunday 22<sup>nd</sup> January 2023.

Submissions should be made online and emailed to [leatherhead.library@](mailto:leatherhead.library@)

[surreycc.gov.uk](http://surreycc.gov.uk) and should have been taken during the competition period only. We would also be pleased to receive printed entries, together with your contact information, at Leatherhead Library.

Full details can be found here: <https://www.surreycc.gov.uk/libraries/news-and-events/digital-activities/frances-burney-in-surrey>





## Mickleham Village Hall Dell Close

Weekdays 9.15 am - 12.15 pm (term time)

WITH OPTIONAL LUNCH CLUB

On Mondays and Thursdays there is the option for children to stay until 2.45 p.m.

Maximum 26 children per session

• playing naturally • learning naturally

We offer an excellent range of pre-school activities for 2½ to 5 year-olds where they can learn through play in an informal friendly atmosphere.

Contact us for more information about admissions

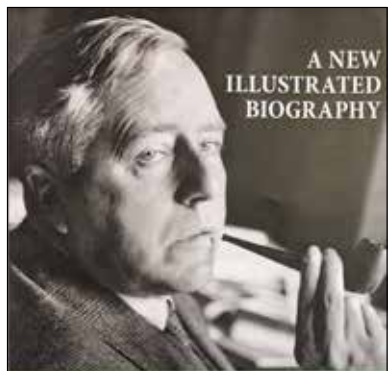
01372 361021 [www.stmichaelscommunitynursery.co.uk](http://www.stmichaelscommunitynursery.co.uk)

## Solution to the November crossword

Across: 9 Beefsteak tomato 10 Turnips 12 Netball 13 Guacamole 14 Rioja 15 Masseur 18 Timpani 21 Nerds 23 Shrinkage 25 Cabbage 26 Mustard 29 Brussels sprouts.

Down: 1 Abut 2 Rear 3 Estimate 4 Lets go 5 Skin test 6 Hooter 7 Paranoia 8 Kohlrabi 11 Uvula 15 Minicabs 16 Scrubs up 17 Respells 19 Ministry 20 Niger 22 Sparse 24 Remiss 27 Anus 28 Dish

## BRAIN TEASER answer: Mince Pies



Sir James Jeans  
Scientist, Philosopher  
and Musician

Saturday 10<sup>th</sup> December  
at 7 pm

In the June 2021 issue there is an article about the publication of a biography of Sir James Jeans who lived in Cleveland Lodge, Westhumble. The author of the biography, his son Christopher Jeans, will give a talk in Westhumble Chapel. His illustrated talk will include Cleveland Lodge memories and various aspects of his parents' lives to promote his book. It will include some details which are not discussed particularly in the biography. Copies of the book will be available and can be signed if you wish.



## Autumn at St Michael's Infant School

The autumn term marks the start of our school year and brings with it a vibrant and busy schedule. This year has been no different and we have captured just a few of them below.

### Prospective Parents

As always at this time of year, we offered the opportunity for prospective parents to come and visit us so that they can get to know us more, see our amazing school site and grounds and meet the incredible children, staff, parents and governors. One of our biggest challenges is our visibility; it is no coincidence that a previous Ofsted inspection described us as a 'hidden gem' after a conversation with one of our families. Once they are inside our small school, they inevitably glimpse our kind heart even on a short visit. You may have seen our banners as you drive past the school or around the local area, highlighting our open visit arrangements. If you know anybody who is looking for a school place it is not too late, please take the opportunity to let them know about us and encourage them to visit. We are offering individual tours so that the experience is much more personal. All they need to do is call the school before the end of

the term and we will do all we can to accommodate them. Without a doubt, word of mouth is our biggest marketing tool, so please spread the word about our fantastic school as much as you can.

### Remembrance – a time for reflection

Each year the school take the time to stop and remember the courage and bravery of those who have fought, or are still fighting, in wars so that we can then live in a more peaceful world. Once again, we used stillness and silence as a way of showing respect and gratitude to the soldiers. Our families also supported the British Legion by buying poppies and poppy accessories. These are things that we make sure we do each and every year, however this year we did something a little different. As an extra mark of respect the whole school donned their red jumpers and tops and participated in an aerial poppy creation which hopefully made it into the local papers and created a memory that the children will never forget.

### Autumn Colours

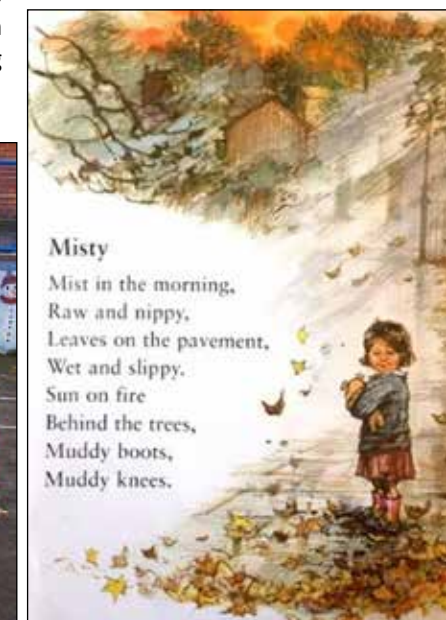
Autumn is a stunning season that reminds us all how lucky we are to watch nature's unfolding beauty. From the school we have the most amazing



[stmichaels-dorking.surrey.sch.uk/](http://stmichaels-dorking.surrey.sch.uk/)

views that help us observe these seasonal changes. We made sure that our children spent time looking for signs of change and spotted autumn all around them. It always reminds us of a favourite Shirley Hughes poem from her book 'Out and About' and it seems fitting that we should remember this glorious tribute following her death earlier this year, so we have included a short section here. Of course, children at St. Michael's are always out and about thanks to the leadership of our Forest School Leader, Mrs Stewart. No matter the weather, they will be found exploring and appreciating the natural world. As she reminds us regularly, there is no such thing as bad weather, just bad clothing!

Paula Bliss



**Misty**  
Mist in the morning,  
Raw and nippy,  
Leaves on the pavement,  
Wet and slippery.  
Sun on fire  
Behind the trees,  
Muddy boots,  
Muddy knees.



## Christmas Tree Sale

Again this year The Friends of St Michael's Infant School have taken orders for high-quality non-drop Nordman firs. Proceeds will go towards upgrading our classroom equipment to enhance the learning of our 4-7-year-olds. Trees will be available for collection from the school the first weekend in December.



# Cryptic Crossword

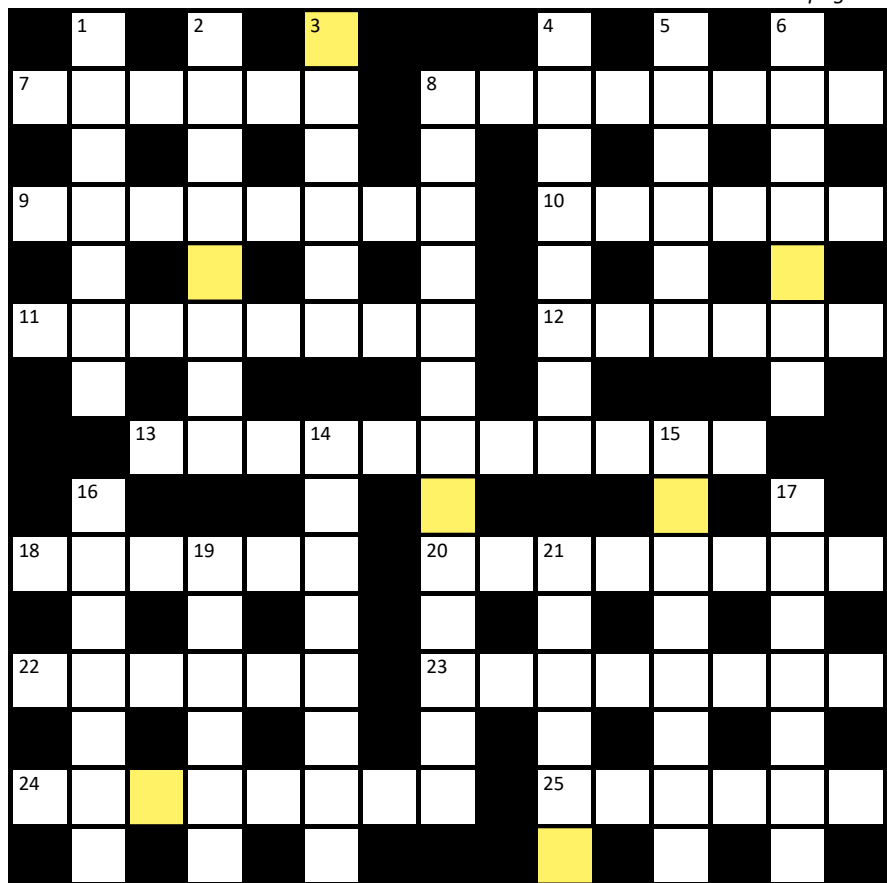


Solution to the November crossword is on page 26

The golden squares can be made into a follower of 6, 11, 12, 16, 17, & 21 (7)

## Across

- 7 Have a try-out injecting Mr Slaughter in an unpleasant way (6)
- 8 Exotic rum label suggests what to put in a drink (8)
- 9 Dr Manure explodes at suggestion of where to apply deodorant (8)
- 10 Possible result of making love to Bond's boss with enthusiasm in a sound booth (6)
- 11 She's led a merry dance like Mary Queen of Scots (8)
- 12 What can be added to onion to season well (6)
- 13 Flag depicting toilet and pedestrian in nature (3-8)
- 18 Plod very softly when hiding in cover in 5's place (6)
- 20 Vigorous sex combined with pure oxygen leads to media interest (8)
- 22 Ruskin mystically proclaims 'This could be black' (3,3)
- 23 Sounds like deer are after rubbish to flatten (8)
- 24 Family man, when unbelievably hot inside goes to get naked (8)
- 25 Less cheese in macaroni béchamel sauce ultimately makes you inclined to forget who the Prime Minister is (6)



## Down

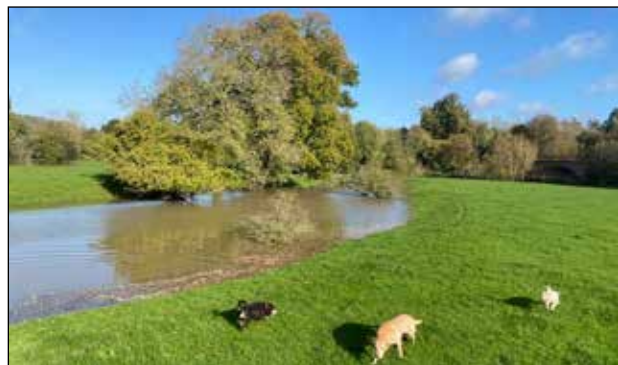
- 1 EU hadn't arranged to manifest with ghosts (7)
- 2 When the news is out for Dot to focus on (6,2)
- 3 Ridge discovered in God's acre as evidence of Neolithic man (6)
- 4 Exhibiting enthusiasm as gynaecology is often combined with this scattering of seeds (8)
- 5 Organ and gong found in the water near Calais (6)
- 6 Gambling with money and what the golden squares is famous for (7)
- 8 When given an order to use a blanket, I'm explicit in a slightly non-regular way (13)
- 14 Yes, holding fork's essential part to resistance - it's all down to the state that is unconcerned about our troubles (8)
- 15 Squatter's dirt seen in ruins (8)
- 16 Sounds like a way to get in to Elvis is in the place that 10cc recorded 'Deceptive Bends' (7)
- 17 What a sausage does when on heat is to get kinky (7)
- 19 Catholic cardinal wears this patch's precursor when things are good (6)
- 21 Mariupol is hell when hiding from those to the East of Europe (6)

Andrew Tatham



The cattle decided to keep warm in the embers of the bonfire

The river Mole rose very quickly when 56mm of rain fell in the first few days of November. Wendy Tickner's photo of the water in the oxbow lake in Nichol's Field shows this.





**RESIDENTIAL • COMMERCIAL  
AGRICULTURAL • SCHOOLS • ACOUSTIC  
HOARDING • GATES • SECURITY**

**RICHARDSON & BRADS FENCING LTD**  
**T: 01306 640 143 - 01483 414 745**  
E: [INFO@RBFENCINGLTD.CO.UK](mailto:INFO@RBFENCINGLTD.CO.UK)  
W: [WWW.RBFENCINGLTD.CO.UK](http://WWW.RBFENCINGLTD.CO.UK)  
A: 168 SOUTH STREET, DORKING, SURREY, RH4 2ES  
UNIT 45 MARTLANDS INDUSTRIAL ESTATE, SMART'S HEATH LANE, MAYFORD, GU22 0RQ

## J S Wilson

Mickleham

# Carpentry & Building Services



Extensions ~ Conversions  
Refurbishments ~ Property Maintenance  
Fully guaranteed ~ Fully insured  
*One call WILL solve it all*

Contact Jason on: 07761 926684 or 01372 379359  
[info@jasonswilson.co.uk](mailto:info@jasonswilson.co.uk)



## MEABY&Co

solicitors

**Strength & wisdom in law & business since 1848**

Meaby & Co Solicitors sits proudly in the heart of Dorking High Street providing expert legal advice to individuals and businesses throughout the town and its surrounding area. With additional offices throughout London, our experienced team, our 5\* Google reviews and award winning service will ensure that all of your legal needs are supported on your doorstep.

**Specialising in:**

Residential & Commercial Property	Fraud & Private Crime	Reputation Protection
Wills, Trusts & Probate	LGBT Experts	Commercial & Corporate Law
Litigation and Mediation	Employment Law	Media & Entertainment
Crisis Management	Family & Divorce Law	Lease Extensions

Drop by our offices at 159 High Street, Dorking RH4 1AD or contact our switchboard on 01306 884432. Need advice elsewhere? We can assist. We have branch offices in Camberwell, Soho & Chigwell.

**Switchboard:** 01306 884432 [www.meaby.co.uk](http://www.meaby.co.uk)  @MeabyandCo  meaby-&-co  MeabyandCo  meabyandco





## Need help with your accounts?

Running a business needs time and energy – don't waste your time working on your accounts when you can work on your business instead!

At a4c we provide fixed fee accountancy solutions with friendly support throughout the year. Services include accounts tax returns VAT payroll book-keeping etc.

Friendly approachable and local to Dorking – we enjoy getting to know our clients so call us today for a no obligation chat.

**We LOVE numbers so YOU don't have to!**

**01737 652852**

[esther@a4cgroup.co.uk](mailto:esther@a4cgroup.co.uk)

[www.a4cgroup.co.uk](http://www.a4cgroup.co.uk)



**RANMORE  
RENOVATIONS**

### LOCAL BUILDER

New bathroom installation  
specialist

plumbing/heating

electrics plastering & tiling

decorating Karndean flooring.

All building works and property  
maintenance undertaken.

All works guaranteed

36 years' experience

Please contact Damian

07940 599845 / 01306 880332

[musgrovebuild@gmail.com](mailto:musgrovebuild@gmail.com)



# 01306 88 55 33

**For quotes or to make a booking  
email us on: [Enquiries@dorkingtaxis.co.uk](mailto:Enquiries@dorkingtaxis.co.uk)**

**[www.dorkingtaxis.co.uk](http://www.dorkingtaxis.co.uk)**

- 4 / 6 / 8 Seaters
- Airport specialists
- Ferry ports & Eurostar
- Courier services available
- Home to School Transport service available
- Long distance journeys welcome
- All drivers & vehicles are fully vetted by MVDC & Surrey County Council
- Lady drivers available on request
- All major card payments accepted



A local award-winning business supporting people living in Epsom and Mole Valley enabling them to remain living independently AT HOME as well as providing companionship and colour to peoples lives.

**RATED AS OUTSTANDING BY CARE QUALITY COMMISSION**

Committed to providing a quality trusted and consistent home care service we only recruit local CareGivers and match every CareGiver to every client so the same person will call each time.

**01372 741544**

[simon.burrowes@homeinstead-epsom.co.uk](mailto:simon.burrowes@homeinstead-epsom.co.uk)

[www.homeinstead.co.uk/epsom](http://www.homeinstead.co.uk/epsom)

## John Wadsworth



**CALL NOW FOR YOUR FREE VALUATION**

**01372 450500**

[www.johnwadsworth.co.uk](http://www.johnwadsworth.co.uk) [sales@johnwadsworth.co.uk](mailto:sales@johnwadsworth.co.uk)

*A professional efficient and friendly service*