

# MICKLEHAM PARISH Magazine

A community magazine for Mickleham and Westhumble



April 2017



# TRUGREEN®

## Professional LawnCare

### A lawn is never JUST a lawn

- Fertilisation • Weed and moss control
- Aeration • Scarification • Insect control
- Disease treatment • Hard surface weed control

Call now for a free LawnCare Analysis

**01306 644886**

TruGreen (Epsom)

Michael Beecheno

The Cottage, Pilgrims Way, Westhumble

Starting at just £20 per treatment

A Service **MASTER** BRAND

# Bullimores

## Chartered Accountants

**The Safe Pair of hands**

**Tax • Accounts • Probate  
Inheritance Tax & Executorship**

For advice, please call us on: **01306 880880**

or email: [partners@bullimores.co.uk](mailto:partners@bullimores.co.uk)

[www.bullimores.co.uk](http://www.bullimores.co.uk)

Bullimores LLP licenced to carry on out the reserved legal activity of non-contentious probate in England & Wales by the ICAEW



**Stepping Stones**  
Country Pub and Dining

**STEAK NIGHT  
EVERY TUESDAY  
TWO COURSE MEAL  
GLASS OF WINE  
£19**

**Food Served All Day – Free Wi-Fi**  
Walkers – Muddy Boots – Cyclists – Families and dogs  
All welcome

*Lovely function room available for  
meetings, family and business events*

Near Box Hill and Westhumble Station  
**01306 889932** [www.steppingstonesdorking.com](http://www.steppingstonesdorking.com)  
[steppingstonespub@gmail.com](mailto:steppingstonespub@gmail.com)



**Please see  
website  
for  
special  
events**

# Sherlock Funeral Service

*Sherlock Funeral Service is an  
Independent family owned business,  
established over 100 years*

- Private Service Chapel & Rest Rooms
- Home visits arranged if required
- Pre-Paid Funeral Plans available
- Free Parking

**Telephone: 01306 882266**

Trellis House, 190 South Street, Dorking RH4 2ES.

Email: [office@sherlockandsons.co.uk](mailto:office@sherlockandsons.co.uk)



**Funeral Directors & Monumental Masons**

# MICKLEHAM PARISH Magazine

**APRIL  
2017**

## Mickleham Parish Magazine

A community magazine for Mickleham and Westhumble, published under the auspices of Mickleham PCC, with an independent editorial panel.

The magazine is published at the beginning of each month, except January and August.

**COPY DEADLINE**

**FOR THE  
MAY 2017**

**MAGAZINE  
Sunday  
9<sup>th</sup> April**

send to:

Sue Tatham

St Anthony, Pilgrim's Way

Westhumble

Dorking RH5 6AW

01306 882547

[sue@thetathams.co.uk](mailto:sue@thetathams.co.uk)

Contributions in any form are welcome, as are good quality photographs. There is no charge for advertising local charity and community events. However, the editors reserve the right to shorten, omit or reformat articles submitted for publication, depending on space.



Printed by Evonprint, West Sussex

Mickleham Rectory

Dear friends

This April, as far as the Christian Church is concerned, is dominated by HOLY WEEK and EASTER. This really is the time when all Christians should come together in worship and celebration for, as Paul the Apostle wrote: 'If Christ be not raised our faith is in vain.' No resurrection – no Christian faith!

We have a variety of services on offer and it is my hope and prayer that, if you are happy to be called a Christian, you will feel able to join us on one or more of the following occasions:

- Palm Sunday 9<sup>th</sup> April: Holy Communion service 10 a.m. as we reflect on Jesus entering Jerusalem on a donkey. Why a donkey? What message was Jesus trying to get across?
- Tuesday 11<sup>th</sup> April: A short service of Holy Communion at 7 p.m. – lasting about 30 minutes.
- Wednesday Tuesday 12<sup>th</sup> April: A short service of Evening Prayer/Compline at 7 p.m. – lasting about 30 minutes.
- Maundy Thursday 13<sup>th</sup> April: A service of Holy Communion at 7 p.m. with choir and hymns when we focus on the last meal Jesus shared with his friends and what happened afterwards in the Garden of Gethsemane.
- Good Friday 14<sup>th</sup> April: An 'Hour at the Cross' at 2 p.m. when we take time out to reflect on 'Seven Last Words' spoken by Jesus before he died. There will be hymns, readings and reflections.
- Easter Eve Saturday 15<sup>th</sup> April: A short 'Service of Light' at 7 p.m. lasting about 30 minutes, when we meet to reaffirm our baptism vows and prepare for the joy to come.
- **EASTER DAY 16<sup>th</sup> April: The day of resurrection!** A short, traditional service at Westhumble Chapel (8 a.m.) for those who wish to share the Easter story in a personal way. Then, at 10 a.m., a Family Communion as all ages gather together to celebrate the joy of Easter Day. For the 'young at heart' there will be an Easter Egg Hunt in the Rectory garden after the service. Wait for instructions!

The other significant event in April is our Annual Parochial Church Meeting (APCM) which will take place in St Michael's Church on Sunday 23<sup>rd</sup> April after the 10 a.m. service. This will be chaired by our Team Rector, The Rev'd Graham Osborne. If you are on the ELECTORAL ROLL then you are invited to attend, participate and vote for churchwardens (2), Deanery Synod representatives (2) and PCC members (3). If you would like to know more about being on the Electoral Roll then there are details in church.

To God be the glory, great things He hath done  
So loved He the world that He gave us His Son

With best wishes

*Malcolm*



Malcolm, our Parish Priest, is more than happy to visit people in the parish (with or without church links) to discuss pastoral and/or spiritual matters. He is also happy to offer home communion to those not able to attend church on a regular basis. Just contact him.





## JOIN US FOR BREAKFAST

THE RUNNING HORSES

9 – 10 A.M.

Please book by the Tuesday before

## MEN'S BREAKFASTS

THIRD SATURDAYS

15<sup>th</sup> APRIL

Book with: Andy Diamond  
diamo1@hotmail.co.uk

## WOMEN'S BREAKFASTS

FOURTH SATURDAYS

22<sup>nd</sup> APRIL

Book with: Stephanie Randall  
0773 6933 482  
srandall55@gmail.com

# Tea @3

FOURTH MONDAYS

Monday 24<sup>th</sup> April

Host: Angela Ireland  
St Michael's Lodge  
Old London Road, Mickleham  
ALL WELCOME  
TRANSPORT AVAILABLE



## Fairtrade Stall

Sunday 2<sup>nd</sup> April  
In St Michael's after  
10 o'clock service

Traidcraft offer an extensive  
range of very good quality craft  
items. Catalogues available or  
view online at

[www.traidcraftshop.co.uk](http://www.traidcraftshop.co.uk)

Alison Wood 01372 376443  
Amanda Wadsworth 01306 743164

## New Mickleham & Westhumble Youth Group

See page 26  
for further details



## Changes to the Church's North Aisle

You may have found that the church has been closed during the week recently. This is because of building work to create more space in the north aisle. Some of the pews have been removed and others have been moved against the wall to create an open area with seating on two sides.

The floor has been tiled and then covered with a loose carpet, thus providing a comfortable space for families with young children during services. The change will also allow easier circulation of people enjoying refreshments after services and while attending concerts.



## Memorial Easter Lilies

If you would like to make a donation towards the cost of the Easter Lilies in remembrance of a loved one, please given their name and the donation to Anne Weaver. The names will be read out during the Easter Day service. Anne's contact details are: 01306 883932 weaver\_anne@hotmail.com

## Lent Lunches

The series of weekly Lent lunches got off to a flying start on 6<sup>th</sup> March when 16 of us gathered at Mary and John Banfield's house. Mary's Red Pepper Soup was such a hit that we have decided to share it with our readers and next month we hope to include Mary's mushroom soup recipe. The lunches are being held to sponsor Will Dennis's abseil down the Portsmouth's Spinnaker Tower on 2<sup>nd</sup> April in aid of four local charities. As they departed the replete diners made generous donations to the fund. Many thanks to Mary and John for their hospitality.

Sue Tatham



## Sweet Red Pepper Soup (Serves 4)

Can be made up to two days ahead; keep covered, in refrigerator. It can be frozen for two months without sour cream; stir in sour cream when reheating. Recipe unsuitable to microwave.

- |                                         |                              |
|-----------------------------------------|------------------------------|
| • 3 medium red peppers, halved          | • 2 tablespoons olive oil    |
| • 1 medium onion, chopped               | • 1 clove garlic, crushed    |
| • ½ cup tomato puree                    | • 2 tablespoons tomato paste |
| • 2 small chicken stock cubes, crumbled | • 2 cups of water            |
| • 1 teaspoon dried marjoram leaves      | • ½ cup sour cream           |

Place peppers cut side down on oven tray, bake in moderate oven for about 20 minutes or until skin blisters, cool slightly, peel and chop. Heat oil in large saucepan, add onion and garlic, cook over medium heat for about 2 minutes or until onion is soft. Stir in peppers, puree, paste, water and stock cubes. Bring to boil, reduce heat, simmer, uncovered, for 30 minutes; stir in marjoram. Blend or process mixture in several batches until smooth. Return to pan, stir in sour cream, reheat without boiling. Serve with a dollop of crème fraîche.

From Mary Banfield. Based on a recipe found in an old Australian cookery book

By the time you read this several more Lent Lunches will have been held where no doubt diners enjoyed further delicious soups – all in the aid of charity.

# Parish Magazine Annual Report 2016

The magazine has continued to prosper, and, according to reports, is widely read not only by local residents, but by those who collect copies from church, the shop and other village sources or access it on the church or Parish Council websites.

Magazine finances remain sound with our advertising revenue more than covering production costs. This year's MPM group 'Christmas card' raised £100 which was divided between The Friends of St Michael's School and the Community Nursery.

As editor I am most grateful to the many people who help with the magazine production and distribution every month, with special thanks to:

- Charlotte Daruwalla, who edited half the issues, Stephanie Randall our expert proof reader and to all the other members of the editorial panel: Fiona

Roberts-Miller, Liz Weller, Jenny Hudlass and Judy Kinloch.

- Ben Tatham, who is sent out in all weathers to take photographs of places and events.

- Richard Roberts-Miller who, to date, has produced 186 crosswords for us.

- \* Fiona Roberts-Miller for looking after our advertisers and accounts so efficiently.

- Mary Venning who prepares the magazines for distribution, Rustom Daruwalla, David Kennington and Fiona Rowland who distribute the bags of magazines and to the many helpers to those who deliver the magazines from door to door. This has been Fiona's first year helping us and is a very welcome member of the team. Also new is Phyl Neal who has kindly taken on Burney Road deliveries, following the death of Ray Wilson in October. Ray is much

missed as he had helped with the magazine for many years and besides his deliveries had kept us very well informed about new residents, recent births and people celebrating significant events.

- Linda Boyle who organises the mailing list subscriptions. Presently these are 33 names on our list.

- Our advertisers and all those who contribute articles, reports and items of news each month.

- And finally Malcolm Raby for his support and wise counsel and for always submitting his copy in good time.

Much of our time at the end of the year has been taken up with preparations for the changeover to full-colour printing with the first issue in 2017. This will allow us to do justice to the lovely coloured photographs we receive. We hope readers will approve of our 'new look'. Sue Tatham, Editor

## Strong Plastic Carrier Bags Needed

As our 'new look' magazines are printed on heavier paper, we would welcome donations of strong carrier bags to use for our deliveries. You may leave these at the back of the church, or on the porch of St Anthony, Pilgrims Way.

## Recent changes at Westhumble Chapel

Photograph: Ben Tatham



Extensive tree work has been carried out in the area behind the Chapel in preparation for the proposed improvements to the building and its grounds. This photograph shows the cleared area to the north of the Chapel, with Lovedon Cottage in the background

## Leith Hill Musical Festival

Thursday 6<sup>th</sup> April

Blest pair of sirens – Parry  
Dona nobis pacem – Vaughan Williams

Friday 7<sup>th</sup> April

Elijah – Mendelssohn

Saturday 8<sup>th</sup> April

Benedicite – Carter  
Little organ mass – Haydn  
**MICKLEHAM'S DAY**

Dorking Halls

Competitions 9 a.m.  
Concerts 7.30 p.m.

Festival Conductor  
Jonathan Willcocks  
[www.lhmf.org.uk](http://www.lhmf.org.uk)

Tickets from Dorking Halls Box  
Office: 01306 881717

## Annual Parochial Church Meeting – Sunday 23<sup>rd</sup> April

after 10 a.m. service



Superb professional  
cleaning of carpets,  
oriental rugs,  
upholstery, curtains  
and leather  
Guardsman  
anti-stain protection

- spot stain and odour removal
- leather cleaning specialists
- flame retarding
- dust mite reduction service
- all work fully insured & guaranteed

For a free, no obligation quotation, call today  
Freephone 0808 144 9071  
John Joannides, 28 Bracken Close, Bookham

**Safeclean**  
*The furnishing care specialists from GUARDSMAN*



*Pinehurst  
Rest Home*

*We aim to provide an excellent service at  
competitive rates, supporting emotional, physical  
and social needs of our clients, always respecting  
and protecting their status as adults.*

- Residential and 24-hour daycare
- Excellent cuisine
- Facilities for disabled: medic bath / lift
- Home doctor in attendance
- Single & sharing rooms
- Convalescent & short stays
- Lounge with TV & piano
- Separate dining room
- Physiotherapist, chiropodist & hairdresser
- Entertainment: theatre visits / parties  
& cabarets held on premises

**National Trust Road, Box Hill  
Mickleham, Dorking, Surrey RH5 6BY**  
Telephone: 01306 889942 / 888253

*Dorking Decorators*  
PROFESSIONAL PAINTERS & DECORATORS

**40 Years Experience**  
All aspects of painting and decorating

**01306 640418**

[www.dorkingdecorators.co.uk](http://www.dorkingdecorators.co.uk)

Approved by Trading Standards & Checkatrade



**CHRIS HULME**

*Garden Machinery*

*Service and repair of all makes and models of:*

- Ride-on mowers
- Rotary mowers
- Cylinder mowers
- Chainsaws
- Strimmers
- Hedge cutters
- Rotavators
- Blower vacs

*Quality secondhand machinery  
Collection and delivery service*

The Barn, Cowslip Lane, Mickleham 01372 377757 / 07950 961606



*Flowers  
by Elaine*

Local delivery Interflora Worldwide  
Weddings & Functions Special Occasions  
Fresh Flowers & Plants Varied Gift Selection  
Qualified Florists

Established 1978



- ★ Bouquets ★ Arrangements ★ Hand-tied Wraps ★ Plants & Bulbs ★ Exotic Flowers
- ★ Pots & Baskets ★ Planted Displays ★ Champagne ★ Wines & Spirits ★ Fresh Fruits
- ★ Cute Teddies ★ China & Vases ★ Helium Balloons

01306 883511 fbe@btconnect.com 66 High Street, Dorking, Surrey RH4 1AY  
Order online at: [www.flowersbyelaine.co.uk](http://www.flowersbyelaine.co.uk)



**For all your decorating needs...**  
Professional, friendly and speedy service at all times

Fully insured	Insurance work
Exterior painting	Interior decorating
Free quotes & advice	Oil & Water-based products
Commercial/Domestic work	Wallpaper hanging & removal

0794 713 376 0208 3978 962  
[www.slhdecoratingservices.com](http://www.slhdecoratingservices.com)

## Diocese of Cyprus and the Gulf – Christ Church, Aden

*Extract from a short talk given at the morning service in St Michael's Church on Sunday 19<sup>th</sup> February*

The Diocese of Cyprus and the Gulf is small in terms of number of churches but probably the largest in area of any in the worldwide Anglican Communion and certainly the most diverse. It includes churches in Cyprus, Iraq, Bahrain, Kuwait, the United Arab Emirates, Qatar, Oman and Yemen. In a troubled region Yemen is a particularly troubled country and the most remote church in the Diocese is Christ Church in Aden at the southern tip of the Arabian Peninsula across the Red Sea from Djibouti.

In the early 1990s the then Bishop of the Diocese, John Brown, asked permission of the Governor of Aden for the Anglican Church to reclaim the old British military chapel and open a church for expatriates in Aden and the surrounding area. The Governor agreed and issued a fatwa which gave the church the right to function as a Christian community and to operate a general medical clinic for the surrounding local district of Tawahi. The permission granted by that fatwa still stands today.

Over the years the standard of government sponsored general medical clinics has improved significantly and the Ras Morbat Clinic now specialises in eye care where local facilities are less effective. Poor diet and high UV levels cause significant cataract problems even in young people. Ras Morbat has two surgeons who do little else

but remove cataracts and a group of nurses who give eye tests, prescribe glasses and generally provide advice. I have visited Aden several times and I am always overwhelmed by the idea of an eye clinic staffed by Yemeni Moslem doctors and nurses caring for the Yemeni Moslem poor of Aden very openly under the auspices of an Anglican church. Patients are heard to say they are *going to the church* for their eye care. This is a place of Christian witness, with permission from the authorities to function as a church and operate a clinic, a place of outreach via the clinic to the local needy and above all a place which is open to anyone of goodwill.

Yemen has never been safe. Power has rested with tribal militia and a weak corrupt government in the capital Sanaa. Poor and unstable it was until recently an almost forgotten place. Then as Al Qaida was displaced from Iraq and found a home in Yemen the balance of power began to change. Saudi Arabia became involved along its southern border and the United States followed. That in turn drew in Iran and for the last three years there has been civil war, a proxy war between Saudi Arabia and Iran, and increasing danger and chaos. There is now the very real risk of widespread famine.

Aden has to some extent been a sheltered from the worst of the violence in the country but in 2015 the security

situation became sufficiently serious for the priest at Christ Church to be moved out of the country. Despite the problems the clinic kept functioning but because of the violence even that had to close for five months during 2015 and the buildings suffered considerable damage. The clinic has stayed open throughout last year and into 2017 despite continuing fighting in and around Aden.

Recently the security situation has improved a little. In Aden Al Qaida and Daesh have been replaced by local militia, supported to some extent by the United Arab Emirates, and some semblance of order has been restored but it is still dangerous for foreigners to visit let alone can the Diocese appoint a new priest. And yet Ras Morbat Clinic keeps working. The man who manages the compound is Mansour Yousef a great big gentle giant. The medical team is led by a woman Dr Nana. Both are Moslem but they are proud of their work at Christ Church and they and the staff quite genuinely feel reassured by the prayers and support of many Christian people around the world. In all the mess of civil war and lack of order Christ is very obviously at work in this remote, poor and dangerous place.

John Banfield  
Canon St Christopher's  
Cathedral, Bahrain  
Finance Director Diocese of  
Cyprus and the Gulf

*Photographs: John Banfield*

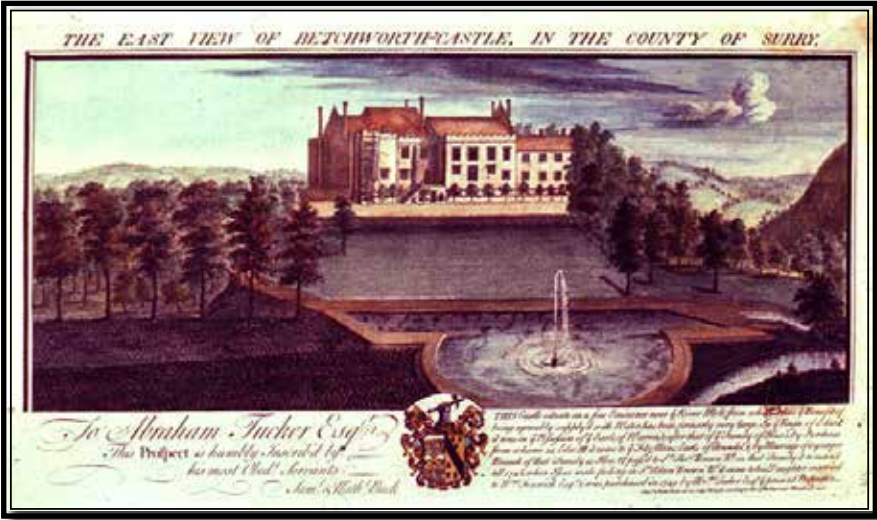


*From left: Patients waiting; Mansour and guards; Operating theatre at Christ Hospital, Aden*



# Mickleham & Westhumble Local History Group

## Betchworth Castle



On 24<sup>th</sup> February following the AGM of the M&WLHG, members were treated to an excellent talk about Betchworth Castle by Martin Higgins, Surrey County Council's Historic Buildings Officer and current owner of the castle. Martin began by telling us that the castle was originally part of the Manor of West Betchworth, whereas Betchworth as we think of it today was in the Manor of East Betchworth.

The castle was not built for defence but was in fact a fortified manor house, built to impress and demonstrate the status of the owner. By the mid-1960s the castle ruins were owned by the local council and were becoming an expensive liability as the structure was in imminent danger of collapse. Several decades later, in 2008, Martin began negotiations with Mole Valley District Council to purchase the castle and thus achieve his ambition to own and restore the castle site, where he had played as a child. The process took three years to complete with a purchase price of £1.

It is not known exactly when, and by whom, the castle was built, but in 1379 Richard II granted John Fitzalan (d'Arundel), Marshal of England, a licence to crenellate his residence on the site and to empark 360 acres of the surrounding land (part of this is now Betchworth Park Golf Course). In theory, a licence to crenellate gave permission to fortify a building but in practice was often a way to show

royal recognition. In 1448 a second licence to crenellate was given to Sir Thomas Browne who had acquired the castle through his marriage to Eleanor Fitzalan of the Arundel family. He was later executed for treason. Eleanor was unlucky in her choice of husbands because her second one, Sir Thomas Vaughan, who had survived capture by pirates while taking the treasure of Henry VI to Ireland, was later executed by the future King Richard III.

Martin then explained how, over the following centuries, numerous additions and alterations were made to the castle. There are several contemporary drawings and paintings of the castle, enabling us to piece together the changes to the building. John Aubrey made a sketch of the castle in 1673 which shows an impressive four-storey gatehouse. The castle also had an enormous hall, four bays long, and a large bay window. Interestingly, part of the castle was constructed from hard chalk which Martin believes probably came from Westhumble. At the end of the 17<sup>th</sup> century, the castle was bought by William Fenwick who demolished a significant section of it, thereby turning it into a much smaller country residence. The engraving (above) of the east view of the castle, produced in the 1730, shows its impressive location on the top of a steep slope, with a commanding view of the surrounding countryside. A line of small yew trees is visible, some of which are still standing

today, although considerably larger than in the picture! A terrace can also be seen, an astonishing 300 feet long and 8 feet high, constructed of white chalk with greensand below. There was also a magnificent avenue of lime trees and many beautiful old chestnut trees in the park.

By the end of the 18<sup>th</sup> century, the castle was owned by the banker, Henry Peters. He commissioned Sir John Soane to remodel the house and park and, fortunately for historians, the drawings for these alterations have survived. Soane added a conservatory onto the house and built a separate stable block which was later converted into houses, now located in Castle Gardens. The next significant chapter in the history of the estate involved the Hope family, known locally for their connection with the Deepdene. Thomas Hope was one of the richest men in England when he acquired the Deepdene at the beginning of the 19<sup>th</sup> century and the estate was enlarged soon afterwards by the addition of Chart Park, a gift from Thomas' brother. Thomas' son Henry inherited the Deepdene on the death of his father and in 1834 bought Betchworth Castle and its estate. The castle itself was surplus to his requirements and he had the roof removed to create a 'romantic ruin'. When Martin acquired this 'romantic ruin', not only was it unsafe but the whole site was completely overgrown. Through an enormous amount of >>>

Betchworth Castle continued...



Eastern face of castle and the stable block in Castle Gardens today



Photographs: Ben Tatham

>>> hard work by Martin and other volunteers, funded mostly by grant money from local councils and organisations such as English Heritage and Surrey Historic Buildings Trust, the area around the castle is now accessible to the public. The castle can be reached through a gate off the south side of the A25, opposite Wyevale Garden Centre, near the entrance to Betchworth Park Golf Course. Martin is hoping that by the time you read this article there will be a signpost pointing the way. Judith Long

### Would you like to join the Parish Magazine Team?

Our editorial panel needs some new members who will write an occasional report and/or article about a local matter. We meet at 4 p.m. on the first Tuesday of the month. Please contact Sue Tatham on 01306 882547 / sue@thetatham.co.uk

### Advance notice: VIP to visit Mickleham

For reasons that will become obvious I am afraid I am not at liberty to share the name of the VIP concerned at the present time, but this is a serious visitor and there are substantial security concerns. In preparation his/her security people will arrive in advance of the main entourage in early autumn. Whilst camouflaged, they will have unobstructed and search access to properties considered 'sources of risk' to our VIP visitor. Please give them every courtesy if they call for a thorough search and interrogation. For reasons set out below, there will be a need for some local constructions for firearms cover. At the moment, the 465 bus stop and the roof of the village hall are identified for armed watchtowers. There will be manned checkpoints at the A24 and Headley Lane junctions, but only on the day of the visit. Our VIP will be arriving on an early morning flight into Gatwick. While he will be staying locally for talks with some of our local Russian friends, he has accepted our invitation to the men's breakfast on that morning, and will give a short address on 'our

special relationship', perhaps shorter than one would postulate! He will be accompanied by a Mr N. F\*\*\*\*\* (name deleted for security reasons). Invitations to the breakfast will be limited, the VIP's security entourage of 62 will take up some space, and anyone with a suspicious name will be screened out, eg Aarvold, Ireland, Raby (rabbi), Lowry. Security troops will also be present around The Runners and on surrounding roofs, though you may not see them. A faculty has been sought for a small hole to be temporarily created in the church clock tower, but just large enough for machine gun cover. Simultaneously, the first lady will be posing for her portrait—semi-nude, apparently – by our own Sherree V-Daines, and talking about her degree subject from the University of Coleslaw – 'Lip gloss, a users guide'. Please do not share this too widely, but clearly this is an immense honour for our community. I have a secret restricted electronic line to the security people – Codeword: Mainwaring. Do contact me if there are any questions. T P Lard-Mound Esq



### The Dorking Group of Artists Spring Exhibition 2017

Saturday 29<sup>th</sup> April to  
Monday 1<sup>st</sup> May  
10 am – 6 pm  
Closes at 4 pm on Monday 1st May  
Betchworth Village Hall  
Station Rd, Betchworth RH3 7DF

Exhibiting members, many professionals among them, will be displaying over 250 pieces of new and original art, all for sale at affordable prices. The paintings will appeal to all tastes with different subjects and styles, and in a wide variety of prices and media. There will be large selection of unframed paintings for sale too. Entrance to the exhibition is free.



## ASHTREAD PARK LANE FINE ARTS

RESTORATIONS - PICTURE CLEANERS - FRAMERS

ART GALLERY

Many originals and prints for sale

Open 9.30 am to 5 pm Monday to Saturday  
or call for appointment

102 The Street, Ashted KT21 2AW

01372 277284 or 07940 677932

lorna@parklanefinearts.co.uk

## EDE BROS

REMOVALS · STORAGE · SHIPPING ·

- Since 1926, Capel-based and family owned
- STRESS-FREE, local, national & worldwide
- Contact us for your **FREE** estimate...

**01306 711293**  
edebros.co.uk



**We provide the best  
possible care for your feet**

**Book your appointment:  
01372 454583**



**Bookham**

**Chiropody & Podiatry Clinic**

Diagnosis, Expert Treatment & Professional Care  
for Your Feet

**29 High Street, Great Bookham KT23 4AA**  
www.bookhamchiropody-podiatry.co.uk

## Betchworth Electrical Contractors Ltd.

Tel: 01737 843079

Mob: 07966 239644

- Additional Lights and Sockets
- Complete Rewiring
- Garden Lighting and Power
- Electrical Installation Condition Reports
- Specialists in Fault Finding
- Telephone & Computer Cabling
- Central Heating Controls
- Smoke Alarms to BS5839:Pt6



All work is in compliance with  
BS7671:2008 Amendment 3



## ALFA CHIMNEY SWEEPS

- Clean prompt work
- 30 years' experience
- Specialist advice for old/problem chimneys
- Weekday and weekend service
- Fully insured

**01306 883287**



Gill and Paula would like to warmly welcome you to Aspen Care, offering assistance to enable you to live in the comfort of your own home with care and companionship.

- A happy alternative to a care home
- Cover while your family or carer takes a holiday
- Recuperation and rehabilitation following a hospital stay
- All aspects of personal care, medication and meal prep
- Dementia care, disability, chronic & critical conditions, end of life care
- Accompaniment to appointments

Call for a chat to discuss your requirements.

We look forward to hearing from you.

01737 354821 info@aspenliveincare.co.uk www.aspenliveincare.co.uk



## YOUR LOCAL FARM SHOP ON DENBIES WINE ESTATE

**farm shop deli plant centre**  
FREE PARKING www.vgfarmshop.com 01306 880720

Open 6 days\* 9.30 p.m. to 5.30 p.m.

- Fresh fruit & veg – local & home grown
- Great range of local cheese
- Fresh bread, cakes, croissants & pastries
- Cook ready meals; Bangers Galore sausages

**LOCAL \* NATURAL \* ETHICAL**

**Mothers Day and Easter  
plants & gifts**  
**Pie tasting : Friday 14<sup>th</sup> April**  
**Food Fair: 12-4 pm Sunday 30<sup>th</sup> April**  
Meet your local producers

## Westhumble Residents Association 2017 AGM report and a reflection

Photograph: Ben Tatham



To mark his retirement Mike Giles (left) is presented with a shiny new spade by Duncan Irvine

After adopting minutes and accounts, the meeting re-elected last year's committee en bloc. I had heralded my intention to stand down as chairman on several occasions, including the 2016 AGM, and in the absence of a new volunteer, despite other demanding roles, vice-chairman, Duncan Irvine agreed to stand in for a maximum of twelve months, while a longer term replacement is recruited. Please think seriously about joining the committee.

Our Neighbourhood Police Inspector, Richard Hamlin, addressed the meeting to compare current and past crime statistics. We are in a relatively safe area, but we should all remain vigilant and take sensible security precautions. One area causing particular concern is child exploitation in its many manifestations.

A fuller report on the last year is available from [mike.giles@mac.com](mailto:mike.giles@mac.com) and minutes of this AGM will be available before long.

These four years have been exciting and rewarding, but other pressures demand that I now step down to allow fresh blood to carry the flag. I became chairman after only 15 months as a Westhumble resident – so come on newcomers you can do it!

During my chairmanship, issues have ranged from Dorking Wanderers' occupancy of the Westhumble playing field, to the weight restriction on the railway bridge, and from the installation of a defibrillator at the station to the establishment of our e-mail circulation among nearly 60% of the households in the village.

The PruRideLondon event required

significant liaison with the organisers in its early days, but it has now become a predictable and manageable slight inconvenience for some, while others are enthusiastic about Westhumble's fame as part of the professional route. With one exception, other cycling events have followed our request that their route goes up through the village, as this is much safer than coming downhill from Ranmore.

During 2016, we celebrated the Queen's 90<sup>th</sup> birthday by presenting souvenir mugs to under-14s, and we encouraged residents to tell us, and eventually SCC and the operators, about the importance of the 465 bus route.

The bonfire burnt well and income exceeded costs for the fireworks and insurance for the first time in a couple of years, but the next generation of pyromaniacs needs to be stepping up

to the plate. Neil Mason and his family have been central to the success of this event for well over 30 years and would like to begin handing over responsibility, for the event, including refreshments.

Projects to be progressed by the incoming committee include refurbishment of the Chapel of Ease and establishment of a 'tea-garden' in the grounds; CCTV cameras, to monitor traffic movement after thefts or burglaries and to deter HGVs from infringing the bridge weight limit; and establishment of a priority system for vehicles at the bottom of Westhumble Street.

I wish Duncan all success as interim Chairman, but repeat the whole committee's plea for other residents to become involved in the committee, the bonfire and fireworks and the chapel project.

Mike Giles



Having taken over from Mike Giles as interim chairman of the WRA, my first duty must be to seek a replacement. In the absence of another volunteer, rather than leave the post vacant and so that Mike can retire, I have been happy to stand in for a period of twelve months. But it certainly isn't ideal given

## Still looking for a Chairman!

that this means the village effectively loses a second person who would have been working on local matters, with me now occupying two such positions. The Residents Association really is important for our community. It is also considerably cheaper than a Parish Council and as such is worth keeping if we can, but we need a proper chairman.

You don't need to have been living here for decades and you don't need to have been on the committee for years either. If you are interested, please do get in touch, and come along to a meeting and see how you like it. If we find a replacement chairman sooner than next March – that's even better.

Duncan Irvine





## Mickleham and Westhumble Horticultural Society

### It's the start of the gardening year!

Every spring the committee of the Horticultural Society sits down to consider the Schedule for the main show of the coming year, whether held in July or September. Some items remain much the same – we cannot ask for apples and pumpkins and expect entries in April, or for that matter daffodils in September, but we do try to ring the changes wherever possible. There are always new photography subjects and different cookery challenges. For example, this year we are asking for a *'bread pudding with a difference made by a man'*. Sometimes the ideas flow quite smoothly, at others we are hard put to it to decide. Subjects for the three flower-arranging titles can require soul-searching – does this one call for the use of accessories or not? And what is a suitable task for a 6-year-old – would it be better for a 9-year-old? Thinking these thoughts, I had a brief delve into what children were being asked to produce just over 100 years ago. Some were simple, such as a

bunch of wild flowers (a prize for boys and a prize for girls), or an illustrated nursery rhyme, but some were more difficult. Knitted socks, a pipe rack, knitted comforters, knitted cuffs; I'm not even sure what the latter items are! Girls were expected to produce macramé, embroidery, lace and tatting, while for the boys there was one prize for the best school garden and one for a collection of vegetables 'from ditto'. I imagine the girls were busily engaged in needlework while the boys were digging and harvesting.

To take comparisons a little further, in 1913, there were 16 different vegetable classes including three different varieties of potato as well as a number of collections of vegetables. The neatest and best cropped cottage garden was awarded a prize, as was the best cultivated allotment garden over ten rods. Special prizes were awarded for vegetables grown from Mr Hutchinson's seed. (I think this must be the Hutchisons that has only recently shut down in Leatherhead, by which time they specialised in coal and domestic hearth products) Flowers were less favoured, being limited

to a collection of garden flowers (6 varieties), sweet peas and annuals, but currants of all colours and apples feature strongly. These classes were open to the cottagers and farm, estate and stable employees but not to the gardeners of the big houses in the neighbourhood.

The Royal Horticultural Society did award a Silver medal for the garden flowers and a Bronze medal as we do today but then it was for the winner of the largest total amount of money for garden produce. What we do not intend to replicate is the prize for 'the greatest number of Queen Wasps destroyed in the spring and summer of 1914. First prize went to W. Edgington (291), 2<sup>nd</sup> (228), 3<sup>rd</sup> (214), 4<sup>th</sup> (211) and 5<sup>th</sup> (187), a grand total of 1131 Queens!

We would love to see as many people at the Plant Sale and AGM at Ashleigh Grange on the 22<sup>nd</sup> April but space might prove limited and coffee and cake would be sold out in minutes! However, we do look forward to seeing a lot of you, especially those looking for new ideas for bargain plants to grace your garden and to have a chat with friendly people in lovely surroundings.

Judy Kinloch

## Westhumble Talks Munros and those who climb them

Photograph: David Kingham



Carn Etchachan (Cairngorms)

The subject of our Westhumble Talk on 22<sup>nd</sup> February was 'Climbing Munros' given by David Kingham, a highly-respected local solicitor. It was held in the wonderful setting of Chapel Barn, home of the Armitage family to whom we are indebted for their gracious hospitality.

David treated us to a fascinating, detailed – no Munro was left unclimbed – and well-researched account of the energetic pastime of climbing Munros. His talk was illustrated by some evocative photos of stunningly beautiful regions of Scotland primarily, with some taken in England, Wales and Northern Ireland as well. Indeed, one photo included a couple who were clearly so moved by the spiritual nature of the experience that they were climbing a Munro without the encumbrance of clothing. There was a firm denial from the younger generation of the Cubitt family in the audience that they were the couple in question. David assured us that while nude ascents were rare many take their dogs with them. He had encountered the unlikely sight of a small, but clearly plucky, Yorkshire terrier with the customary bow on its head.

So what constitutes a Munro? The name comes from Sir Hugh Thomas Monro who in 1891, using only a normal Victorian barometer as his measure of height, climbed, mainly alone and at night, all the mountains in Scotland he declared to be more than 3,000 feet – now officially recognised as more than 914.4 meters.

This mildly eccentric, most energetic and challenging pastime has grown in popularity and there are now officially 282 Munros in Scotland and a few in England, Wales and Ireland. David has done all those in England and Wales (Scafell Pike twice and Snowdon six times) and two summits in Ireland. There are also lesser mountains of above 2,500 feet known as 'Corbetts'. 'Completers' are people who have climbed all of them once (6,105 known); twice (194); 3 times (40) and one incredible man an unbelievable 15 times.

David took us through 'the climbs' (a phrase sneered at by the crampons and rope brigade) of most of the Scottish Munros and some in the UK. This

included the dramatic and beautiful Ben Hope in Sutherland, Glen Shiel with its spectacular scenery and Sgurr Nan Gilleann with its pinnacle.

David himself started this activity in 1966 whilst at Shrewsbury School but being in the Navy as a Submariner [David clearly likes the heights and depths of our planet] and later, a career in the law and a family of course have limited his time for doing so but he has climbed 238, 6 twice and 2 three times, occasionally accompanied by one of his daughters. Not far off the total.

He gave an enthusiastic description of the walk to and up and down a Munro, many of which are at least 4/5 miles from a road and for some the total distance is in excess of 20 miles over difficult and sometimes very difficult terrain. This includes boggy land where one can sink to above the knees, steep climbs, narrow ridges with sheer drops each side and navigating round large obstacles including one bolder, known as 'The Gendarme', blocking the path. Indeed, the popularity of this pastime is such that two-star hotels have opened near most of the starting points. Whilst no specialist climbing kit is required, clothing for all types of weather, which can change suddenly and dramatically on mountains, a compass, some form of GPS with an overlay of Ordnance

Survey Maps and OS Landranger Maps and a mobile phone (limited reception) are essential. If walking alone it is essential before setting out to inform the appropriate agency of your planned movements. David reported that 75% of accidents happen on the descent, most likely because of the relief of descending after an arduous climb can often lead to undue haste.

David has also on many occasions done these activities to raise considerable sponsored sums for charities. For instance, climbing a Munro in Wales then one in England then one in Scotland all in under 24 hours without sleep. He tells us that training for this sort of climb is done on the southern slope of Box Hill, which climbed from the bottom, up past the viewpoint to the summit 19 times without stopping equates to one climb of Ben Nevis.

Besides the wonderful views, such climbs often offer the opportunity to see iconic species of moorland birds and animals such as dotterel, golden plover, golden eagle, pine martin and mountain hare.

There are few such healthy and rewarding activities in the most remote and beautiful parts of the UK as climbing Munros. For those of us who have not done so David's talk made us envious of those who have. The Jolly Judge

### Don't miss our opening night - All welcome



Interested in joining a local group of like-minded and enthusiastic amateur gardeners?

Then **THE GARDEN SHED** is for you

**Monday 3<sup>rd</sup> April**

**7.30 p.m. at the Chapel of Ease, Westhumble**

A social evening \* Light refreshments \* No membership fee

**Guest Speaker John Clachan will present 'Maintaining a Healthy Garden'**

- Our aims:
- To meet people monthly to share common interests
  - Share plants, cuttings, seed, advice and ideas
  - Visit our local gardens in Mickleham and Westhumble
  - Organise walks with a guide to explore a topic
  - Arrange occasional speakers and talks
  - Arrange to join courses together
  - Plan outings to gardens further afield

Contact details:

Pauline Davis 07759 646 353 paulinedavis@gmail.com Susie Gowenlock 07768 923 088 susiegowenlock@gmail.com





**Counselling  
Reiki / Reiki Courses  
Mind & Body Healing  
Shamanic Journeying  
Munay-Ki Rites**

*'Wow, it's amazing! I feel so much calmer within myself and also emotionally too, which is really good. I feel so different.'*

For further details please call Judith Cobby on  
01306 882229 / 07790 614448  
or visit [www.healing-inspiration.co.uk](http://www.healing-inspiration.co.uk)



**NJB DOMESTIC CLEANERS**

*come home to a clean home*  
Mother and son business  
Fully insured

Weekly or fortnightly cleans  
One-off spring cleans  
End of tenancy cleans  
Shops, offices and communal areas

[ncbdomes@aol.c.uk](mailto:ncbdomes@aol.c.uk)

Please ring Nick: 07717 763 380  
or Chris: 07780 670491

**Ballroom Dancing  
Latin American Dancing  
Professional Training [IDTA]**

Private Lessons only  
Sunday, Monday & Wednesday  
Evenings 6 - 10 p.m.

At Mickleham Village Hall  
Dell Close, Mickleham, Surrey RH5 6EE  
07901 742 887  
[vmvdancing@gmail.com](mailto:vmvdancing@gmail.com)



IDTA Qualified Teacher

**STEVE & TIM LANGLEY**

*Experienced craftsmen*

ANTIQUE RESTORATION  
CABINET MAKING  
FRENCH POLISHING

Free estimates, collection & delivery  
01372 457700  
07960 486455 07847 769517

**Rowlatt Garden Services**

**RGS**

EST.1985

**Gardens large and small  
we maintain them all**

All aspects of private and commercial garden  
and estate maintenance, landscaping undertaken  
Fencing, grass & hedge cutting

Telephone: 01737 844373 Mobile: 07887 838666  
References available upon request

**Road and Competition Engineering Ltd**

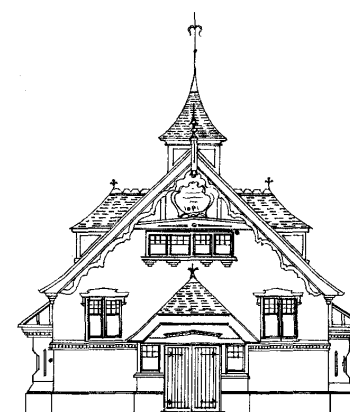


Specialists in the  
maintenance and  
restoration of  
historic road and  
race cars

From general servicing, performance  
modifications, engine/gearbox rebuilds  
to full restorations. We also offer vehicle  
storage. Our workshop is based in Charlwood



Jamie Mason 07840 698452 [www.raceltld.com](http://www.raceltld.com)



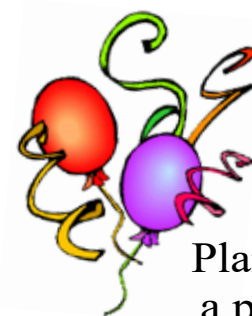
**Mickleham  
Village Hall  
available  
for hire**

Hall bookings  
Table & chair hire

Deanna Darnell  
01372 388474  
07790 941 601

[d\\_darnell\\_MVH@hotmail.co.uk](mailto:d_darnell_MVH@hotmail.co.uk)

[www.surreycommunity.info/  
micklehamvillagehall](http://www.surreycommunity.info/micklehamvillagehall)



Planning  
a party?

Equipment  
available for hire

China ~ Cutlery  
Electric urn

Equipment hire  
Mary Banfield  
01372 373912  
[mgbbmw@aol.com](mailto:mgbbmw@aol.com)

**Community Directory**

Box Hill (National Trust)  
Head Ranger – Mark Dawson 01306 885502  
[mark.dawson@nationaltrust.org.uk](mailto:mark.dawson@nationaltrust.org.uk)  
Friends of Box Hill – Chair Mrs Lyn Richards 01737 842889  
[lyn@mra.uk.net](mailto:lyn@mra.uk.net)

Box Hill School  
Headmaster – Cory Lowde 01372 374814  
[hmsec@boxhillschool.com](mailto:hmsec@boxhillschool.com)

DORKING CRICKET CLUB  
Chairman – David Spackman 07831 859232  
[david@theimagecompany.co.uk](mailto:david@theimagecompany.co.uk)

DORKING CONCERTGOERS SOCIETY  
Ian Codd 01306 882544

DORKING GROUP OF ARTISTS  
Exhibition Secretary – Patricia Booth 01737 24491  
[patriciabooth100@gmail.com](mailto:patriciabooth100@gmail.com)

DORKING LAWN TENNIS & SQUASH CLUB  
Jim Cattermole 01306 883629  
[jim.cattermole@uwclub.net](mailto:jim.cattermole@uwclub.net)

THE GARDEN SHED  
Pauline Davis 07759 646 353  
[paulinemdavis@gmail.com](mailto:paulinemdavis@gmail.com)

Susie Gowenlock 07768 923 088  
[susiegowenlock@gmail.com](mailto:susiegowenlock@gmail.com)

JUNIPER HALL FIELD CENTRE 01306 734501  
[enquiries.jh@field-studies-council.org](mailto:enquiries.jh@field-studies-council.org)

Head of Centre – Simon Ward [Simon.lr@field-studies-council.org](mailto:Simon.lr@field-studies-council.org)  
Friends of Juniper Hall – Mrs Suzy Hughes 01372 275393  
[suzyhughes@businessetiquetteint.com](mailto:suzyhughes@businessetiquetteint.com)

MICKLEHAM CHILDREN'S PLAYGROUND ASSOCIATION  
Secretary – Mrs Sarah Parfitt 07767 891772  
[sarah@sarahparfitt.com](mailto:sarah@sarahparfitt.com)

MICKLEHAM CHORAL SOCIETY  
THURSDAYS 8 - 10 P.M. – MICKLEHAM VILLAGE HALL  
Conductor – Miss Juliet Hornby 01372 373106  
Secretary – Mrs Anne Weaver 01306 883932  
[weaver\\_anne@hotmail.com](mailto:weaver_anne@hotmail.com)

MICKLEHAM OLD BOX HILLIANS FOOTBALL CLUB  
Secretary – John Atewell 01372 374745

MICKLEHAM PARISH COUNCIL  
SEE WEBSITE FOR MEETING DATES [www.micklehampc.org.uk](http://www.micklehampc.org.uk)  
Chairman – Rev'd David Ireland 01372 379381  
[rev.ireland43@btinternet.com](mailto:rev.ireland43@btinternet.com)  
Parish Clerk - Trevor Haylett [trevor.haylett9@gmail.com](mailto:trevor.haylett9@gmail.com)

MICKLEHAM PARISH MAGAZINE  
Editor – Mrs Sue Tatham 01306 882547  
[sue@thetatham.co.uk](mailto:sue@thetatham.co.uk)

MICKLEHAM VILLAGE HALL  
Chairman – Ben Tatham 01306 882547  
[ben@thetatham.co.uk](mailto:ben@thetatham.co.uk)  
Bookings Manager – Mrs Deanna Darnell 01372 388474  
07790 941601  
[d\\_darnell\\_MVH@hotmail.co.uk](mailto:d_darnell_MVH@hotmail.co.uk)

Continued on page 16.

**In Pain? We Can Help  
Dorking Chiropractic Clinic**

Dr Graham M Allen & Associates

- Back Pain and Sciatica
- Hip, Knee, Foot and Ankle Pain
- Neck Shoulder and Arm Pain
- Headaches and Migraine
- Sports/Occupational injuries
- RSI/Carpal Tunnel
- Back Pain in Pregnancy
- Arthritic Pain
- Trapped Nerves
- Joint Problems

01306 887793  
316 High Street Dorking RH4 1QX  
[www.dorkingchiropractic.co.uk](http://www.dorkingchiropractic.co.uk)

HSA

Registered by the General Chiropractic Council • Member of the British Chiropractic Association

**DORI VANA PLUMBING  
YOUR LOCAL PLUMBER**

EXPERIENCED, RELIABLE  
AND PROFESSIONAL  
From changing washers to changing bathrooms

CALL DORI  
07977 220465 / 01306 887282

Proud members of  
**Checkatrade.com**  
Where reputation matters



## ST MICHAEL'S CHURCH

*within the United Benefice  
of Leatherhead and Mickleham*

Incumbent – The Rev'd Graham Osborne  
01372 372313

### PARISH PRIEST

The Rev'd Malcolm Raby 01372 378335  
07810 088594  
rm.raby007@btinternet.com

### CHURCHWARDENS

Mrs Anne Weaver 01306 883932  
weaver\_anne@hotmail.com

Simon Ward 01372 383350  
simonward@btinternet.com

### PARISH ADMINISTRATOR

Mrs Sarah Ward 01372 383350  
sarwar\_63@hotmail.com

### PCC SECRETARY

Mrs Elizabeth Moughton 01306 883040  
eliz.moughton@btinternet.com

### TREASURER

Richard Siberry 01372 375303  
Siberrman@aol.com

### ORGANIST & CHOIR MASTER

Christopher Connett 01306 743061  
c.connett@btinternet.com

### BAPTISMS CO-ORDINATOR

Mrs Vickie Leney 01306 884054  
vleney100@gmail.com

### WEDDINGS CO-ORDINATOR

Mrs Jane Denny 01306 883107  
carsondenny@aol.com

### FUNERALS ORGANISER

Brian Wilcox 01372 374730  
dbrianwilcox@sky.com

**www.micklehamchurch.org.uk**

*For information about services for other  
denominations see website pages.*

*Search on 'Churches Together Mole Valley'*

## REGISTERS

### BAPTISM

25<sup>th</sup> February Verity Mary, daughter of Amy and  
Simon Ward hva.watson@  
btinternet.com hva.watson@btinternet.com hva.

## FOOD BANK

Donations for the food bank may be left  
at the back of the church

# Calendar of Events April

1	Saturday	7 p.m.	Colditz Charity Night at Box Hill School
2	<b>5<sup>th</sup> Sunday of Lent (Passion Sunday)</b>		Holy Communion (Order 2) Worship Together followed by Fairtrade Stall Will Dennis's abseil down the Spinaker Tower The Garden Shed. Westhumble Chapel Bible Course continues Lent Lunch Churchyard Survey by Professor David Hawksworth Leith Hill Musical Festival Concert including Mickleham Choral Society – Dorking Halls
		8 a.m. 10 a.m.	
3	Monday	7.30 p.m.	
4	Tuesday	8 p.m.	
5	Wednesday	12.30 p.m.	
8	Saturday	7.30 p.m.	
9	<b>Palm Sunday</b>		Holy Communion (Order 2) Holy Communion Morning Prayer – CHAPEL
		8 a.m. 10 a.m. 10.30 a.m.	
<b>HOLY WEEK</b>			
11	Tuesday	7 p.m.	Holy Communion (Order 2)
12	Wednesday	7 p.m.	Evening Prayer/Compline
13	Maundy Thursday	7 p.m.	Communion Service
14	Good Friday	2 p.m.	'Hour at the Cross'
15	<i>Saturday Easter Eve</i>		Men's Breakfast at <i>The Running Horses</i> Easter Bunny Trail at Juniper Hall 'Service of Light'
		2-4 p.m. 7 p.m.	
16	<b>Easter Day – the day of resurrection!</b>		Holy Communion (Order 2) – CHAPEL Family Communion for Easter Day followed by Easter Egg hunt in the Rectory Garden Youth Group meets. Mickleham Village Hall Women's Breakfast at <i>The Running Horses</i> Horticultural Society's Plant Sale & AGM at Ashleigh Grange
		8 a.m. 10 a.m.	
21	Friday	7.15 p.m.	
22	Saturday	9 a.m. 10.30 a.m.	
23	<b>2<sup>nd</sup> Sunday of Easter</b>		Holy Communion (Order 2) Holy Communion followed by Annual Parochial Church Meeting Tea@3 at Angela Ireland's
		8 a.m. 10 a.m.	
24	Monday	3 p.m.	
25	Tuesday	8 p.m.	Bible Course continues
27	Thursday	11 a.m.	Bible Study group meets
30	<b>3<sup>rd</sup> Sunday of Easter</b>		Holy Communion (Order 2) Morning Praise
		8 a.m. 10 a.m.	

### DATES FOR YOUR DIARY

Thursday 4<sup>th</sup> May – Paralympic cyclist Karen Darke's talk at Box Hill School  
Saturday 20<sup>th</sup> May – Village Hall AGM  
Saturday 20<sup>th</sup> May – St Michael's School Spring Fair  
16<sup>th</sup> and 18<sup>th</sup> June – Ashleigh Grange gardens open  
Saturday 17<sup>th</sup> June – Mickleham Choral's Summer Concert  
Saturday 15<sup>th</sup> July - M&WHS Flower Show

## MEMBERS OF THE PAROCHIAL CHURCH COUNCIL

James Aarvold Carole Brough Fuller  
Mark Day Jenny Hudlass Elizabeth Moughton  
Val Selwood Richard Siberry  
Amanda Wadsworth Simon Ward  
Frank Warren Paul Wates Anne Weaver

## TOOLS WITH A MISSION (TWAM)

www.twam.co.uk

TWAM is a Christian charity committed to the recycling and refurbishment of tools which then can provide a means for poorer people in developing countries to learn a trade and be able to support themselves and their families. With this practical help, thousands of young men and women have benefited from the skills they have learned. They need:

- garden forks & spades, saws, hammers, drills pickaxes etc
  - sewing or knitting related tools, thread, zips, scissors
  - embroidery items, fabric and sewing machines
  - wool and knitting needles, patterns
  - portable typewriters, printers and laptops
- If you have any of the above which could be used to help someone to have a better quality of life and hope for the future, please contact Carole Brough Fuller: 01737 842918 cbroughfuller@btinternet.com

## HELPING HANDS

INCLUDING FOOD FOR FRIENDS

*A service for all residents of Mickleham and Westhumble*

Examples of services we offer:

- Transport for visits to doctor's surgery or hospital
- Essential shopping / collection of prescriptions
- Changing library books
- Small tasks: eg changing fuses, altering clocks etc
- Dog walking / care of pets
- Visiting / befriending
- Home-cooked meals for local families going through difficult times

Requests to Mary Banfield 01372 373912  
or leave a message on answerphone.  
Callers will be contacted within 24 hours

*More helpers needed – please contact  
Mary if you can spare some time.*



# Community Directory

Continued from page 13

MICKLEHAM & WESTHUMBLE BOOK CLUB  
Mrs Bernice Bailey 01306 741310  
bpbailey\_uk@yahoo.co.uk

MICKLEHAM & WESTHUMBLE CRICKET CLUB  
Team Secretary – Will Dennis 01372 372684  
will@micklehamhallfarm.co.uk

MICKLEHAM & WESTHUMBLE HORTICULTURAL SOCIETY  
Chairman – Mrs Judy Kinloch 01372 375358  
www.surreycommunity.info/mwhs mail@jkinloch.plus.com

MICKLEHAM AND WESTHUMBLE LOCAL HISTORY GROUP  
Chairman – Ben Tatham 01306 882547  
ben@thetatham.co.uk

MOLE VALLEY DISTRICT COUNCIL 01306 885001  
Councillor – Duncan Irvine 07738 384287  
duncan.irvine@molevalley.gov.uk

NADFAS SOCIETIES  
Betchworth – Miss Mary Venning 01306 883301  
Dorking – Mrs Sue Tatham 01306 882547

ST MICHAEL'S CHURCH OF ENGLAND (A) INFANT SCHOOL  
Headteacher – Jeremy Smith 01372 373717  
info@stmichaels-dorking.surrey.sch.uk  
Friends of St Michael's School – Mrs Meredith Shiers  
meredithshiers@gmail.com

ST MICHAEL'S COMMUNITY NURSERY  
WEEKDAY MORNINGS – MICKLEHAM VILLAGE HALL  
Supervisor – Mrs Hilary Budd 01372 361021

SURREY COUNTY COUNCIL 03456 009 009  
Councillor – Mrs Hazel Watson 01306 880120  
hva.watson@btinternet.com

SURREY WILDLIFE TRUST 01483 795440  
info@surreywt.org.uk

WESTHUMBLE RESIDENTS ASSOCIATION  
Chairman – Duncan Irvine 07738 384 297  
duncan.c.irvine@gmail.com

WESTHUMBLE NEIGHBOURHOOD WATCH  
Lead Co-ordinator – David Allbeury 07860 227451  
westhumble.neighbourhood.watch@gmail.com

## ADDITIONAL CONTACT INFORMATION

CITIZENS ADVICE  
Dorking – Lyons Court 0844 4111 444  
Leatherhead – Swan Mews, High Street 0844 4111 444

POWER CUT HELPLINE 0800 783 8866

CRIMESTOPPERS 0800 555 111

POLICE  
Non-emergency number 101  
Dorking Police (non-urgent) 01483 630370  
Neighbourhood Specialist Team – Dorking Rural North  
Inspector Richard Hamlin 01483 631474  
Richard.Hamlin@surrey.pnn.police.uk

PC 40541 Lee Munday leemunday@surrey.pnn.police.uk  
PCSO David Sadler Sadler8761@surrey.pnn.police.uk

## Babysitting by local teenagers

Chris Rowland 01372 376712  
Freya Pearce 01306 884724  
Olivia Parkin 07887 367850  
Maisy Presley 07720 657327  
Isabella Pererira 07515 489067  
Issy Nash 01306 742762  
Ailsa McNaughton\* 01306 887408  
Patrick Moran 01306 640043  
Ellie Kim 07773 395575  
Ailsa Graham 01306 889855  
Anna Forti 07557 964530  
Alexa Dewar 01306 884744  
Emily Brewer 01306 883793  
Philomena Ala 01306 885767  
Delphine Ala 01306 885767

\* In holiday time only

*If you would like to add your  
name to this list, please get in  
touch with the Editor.  
No charge.*

## Advertising in the Parish Magazine

Please contact the Editor.  
Small ads: a nominal fee is  
charged for ads where items or  
services are bought or sold.

We have been advised to print  
the following reminder:  
*We cannot guarantee the  
quality of the goods and  
services offered by our  
advertisers.*



## Margaret Jennifer Burn 1941–2017

On 15<sup>th</sup> February friends and family gathered in St Michael's to say farewell to Jenny Burn. Tributes were given by two of her sons David Forde who now lives in Australia and Andrew Burn.

Jenny was born in Dublin and by all accounts her childhood was not a happy one. She married, aged 20, and bore two children, David and Caroline.

In 1970 Jenny arrived at Box Hill School to take up a position as Matron in the Senior Boys' House which was at that time located in the 'Old Cottage' on the corner of Dell Close. Although the qualifications she had achieved in her home city of Dublin were secretarial, her organisational skills suited her well to looking after the domestic and medical needs of the boys. Adept with

'the Blarney' the wiles of 15-18- year-old lads didn't phase her.

In 1978 she became responsible for the Junior Boys, having married Box Hill School teacher Colin Burn two years earlier. The arrival of Andrew in 1981 to join Alistair born in 1980 meant that Jenny could no longer continue as Matron. When 'the boys' were older she had a job outside the school as a supervisor with Lawrence & Tester.

In 1992, Jenny moved to Flint Hill in the south of Dorking. She was a very loving mother and grandmother, keeping contact by telephone with those in Ireland in the early days and later in Australia. She was very close to her brother and continued to be in contact with him after he moved to Australia.



He died just three days before Jenny. Throughout her life Jenny faced many challenges, including periods of severe depression, but her plucky spirit usually saw her through. The banter which she enjoyed with all and sundry has left so many happy memories. We send our sympathy to all her family and friends.



## Mickleham and Westhumble Horticultural Society Plant Sale and AGM Coffee Morning

Saturday 22<sup>nd</sup> April

Ashleigh Grange, off Chapel Lane, Westhumble  
Plant sale from 10.30 am – AGM 11.15 am



Photograph: John Banfield



Welsh lyric mezzo-soprano Katherine Jenkins with Steven Banfield MBE, the Commanding Officer of HMS Iron Duke, after she performed for 1,000 Royal Navy staff in Portsmouth at the Royal Navy headquarters on Whale Island before heading to the naval base to meet the frigate's crew on 26<sup>th</sup> January. Steven is the son of Mary and John Banfield of Old London Road, Mickleham.

## Community News

Welcome to Peter and Feena Graham and their two sons who have moved from Leatherhead to Fredley Park.

### GWEN EDWARDS

We send our love and deepest sympathy to Alan Edwards of Burney Road following the death of his wife, Gwen on 20<sup>th</sup> February. We hope to include her obituary in next month's magazine.



We are always grateful to receive news items from our readers.



## Juniper Hall celebrates 70<sup>th</sup> Anniversary

After a presentation I made recently to the Friends of Box Hill at their AGM I was asked if I could put this down on paper too! This year is the 70<sup>th</sup> Anniversary of the Field Studies Council having run field trips from Juniper Hall. As such we will be having some planned events including a garden party in the summer and we are hugely thankful to Martin Cox and Sherree Valentine Danes for their amazing support of the art evening on Saturday 1<sup>st</sup> April, which I hope you will be able to support.

The FSC has a full repairing lease of Juniper Hall and so we aim to renovate and upgrade the centre continually. This will include future en-suiteing of bedrooms. We have spent a

Photograph: Ben Tatham



Juniper Hall in autumn

considerable amount of time doing up many of the rooms across the centre so far. We also aim to invest in order to raise money to help groups through our Kids Fund and Bursary Fund, such as the Leatherhead Youth Project, who may not be able to get to a centre such as ours without this support.

Apart from the many curricular courses we run for primary and secondary schools we are now seeing a growing number of university students coming to the centre. And we now run family holidays every Easter holiday and in the summer. In 2016 we had more than 18,000 visitor nights for the first time and we are hoping to match this in 2017. Juniper Hall's unique position means that we can make use of a huge number of environments and engage with students from across the UK and Europe (as well as Doha and Taiwan in the last two years).

Aside from our courses we also run biodiversity survey work. We do this in partnership with our visitors such as those from Cambridge University. Since 2009 they have recorded 728 species around Box Hill.

We have also committed to reducing our impact on the environment at Juniper Hall. In 2016 we installed 12 solar panels and are converting our lighting

to LED throughout the centre. We are now looking to recycle our food waste so it can be used for anaerobic energy production and look at other ways of reducing our energy usage. Between 2013 and 2015 the FSC had reduced its carbon emissions by 16.9% per learner throughout the organisation. We have continued to build towards this.

We continue to develop the centre and aim to do as much as we can within our local community. I do hope that we will see some of you at the 'Colditz' painting event – last minute tickets from Juniper Hall (01306 734501).

On Easter Saturday 15<sup>th</sup> April between 2 and 4 p.m. we are hosting an Easter Bunny Trail. It costs £3 to take part and a chocolate bunny is given to all those who have a go!

If it is raining then we also have lots of Easter arts and crafts for all the family, refreshments available (including homemade cakes) and a raffle. There is plenty to do come rain or shine. You can also say hello to our goats and chickens. Pop along for as long as you want and enjoy the afternoon at Juniper Hall.

We will send out more information about further birthday celebrations in the coming months.

Simon Ward, Head of Centre

## Theatre Trips & Visits

Although the Friends Provident/Life Sports & Social Club has now closed, Neil Edeson who has organised its theatre trips and day excursions for the past 20 years is continuing to provide this service. The coach will continue to pick up from Aviva where there is free parking onsite for those participating in the trips.

Coming events include:

- **Friday 19<sup>th</sup> May** – Tour of Wimbledon Tennis Grounds and Museum
- **Monday 21<sup>st</sup> August** – *Fiddler on the Roof*, starring Omid Djalili at Chichester.

Please note that as some of these events are proving very popular, early booking is recommended. For information on all available trips contact Neil Edeson [neiledeson@aol.com](mailto:neiledeson@aol.com) or 07771 793294.

- **Thursday 7<sup>th</sup> September** – London theatre trip to *Annie* starring Miranda Hart in her West End debut as Miss Hannigan.
- **Thursday 3<sup>rd</sup> August** – full day excursion to *Countryfile Live* at Blenheim Palace, with a half-price ticket for the Palace itself.
- **Tuesday 2<sup>nd</sup> January** – Pantomime trip to *Dick Whittington* at the London Palladium.

Why not join us and experience the benefits of hassle-free entertainment.



Juniper Hall's  
Easter Bunny Trail  
Easter Saturday

2-4 p.m.  
see above



GOT HEROES HEROES  
GOT HEROES HEROES  
GOT HEROES HEROES  
GOT HEROES HEROES

Answer on page 26.

## David Kennington Retires



National Trust gave David Kennington a lively retirement party at Warren Farm Barns on the 7<sup>th</sup> March. This was David's last day working for NT after 36 years. He initially worked at Hindhead transferring to Box Hill as the NT Ranger in 1988 and then working his way

from Property Manager to become General Manager for the NT Surrey Hills Countryside with a team that looks after more than 16,000 acres of countryside.

Paul Redsell, Countryside Manager for Surrey Hills West, gave a humorous account of both David's work and social activities during this time and the NT Regional Director, Nicola Briggs thanked David for his huge contribution to the Surrey Hills. David was particularly proud of his part in the implementation of the Hindhead tunnel that enabled the NT sites of the Hindhead Commons and the Devil's Punch Bowl to be connected. Gifts presented to David to mark his retirement included a magnificent bench and table made by the Landbarn farm's NT volunteer carpenters and a lovely wooden bowl made from the tree which once grew inside the Broadwood Tower.

Lyn Richards



Photograph: Ben Tatham

Rosemary Grunsell, wife of Let Estate Manager Roger Grunsell, made this magnificent cake to commemorate David's retirement. It includes animals and scenes familiar to all who know the Surrey Hills, with Leith Hill Place on the top tier and crowned by Leith Hill Tower. The cake was surrounded by an array of cup cakes all topped with David's picture.

Photographs: NT



One of David Kennington's final duties as General Manager for the NT Surrey Hills was to open Box Hill's reinstated Riverside Walk

## Investec International Music Festival

Bringing world-class music to beautiful venues in the Surrey Hills

Thursday 4<sup>th</sup> May – Sitkovetsky Trio and Friends Denbies Wine Estate 8 p.m.

Saturday 6<sup>th</sup> May – Piano Extravaganza St Catherine's School, Bramley 7.30 p.m.

Sunday 7<sup>th</sup> May – Gala Concert with The English Concert, Sarah Connolly and Rosemary Joshua

St Teresa's School, Effingham at 5 p.m.

More details and tickets: [www.iimf.co.uk](http://www.iimf.co.uk) / Guildford Borough Box Office 01483 444334



# NEED A CARER?

Highly experienced, qualified  
carer available

Hours to suit your needs

Cheryl 07810 881 267



Extensions and alterations often require a  
**Structural Engineer**

**Robert Wynter & Partners Ltd**

**01306 879875**

Book House, Vincent Lane  
Dorking RH4 3HW

## Get IT Fixed, Get IT Connected

Expert Repair & Maintenance



Brockham based. No call out charges. Fully transparent quotations  
with no hidden costs. We make technology work for you.

Call us now on  
**01737 845980**

ChalkHill Systems  
[www.chalkhillsystems.co.uk](http://www.chalkhillsystems.co.uk)

## Painting

Decorating, tiling,  
Curtain & blind hanging,  
Wallpapering,  
Furniture assembly etc.

- Fully insured
- Free estimates
- References available

Tel: Martin 07770 441 201



## Vivien Cresswell

Made-to-measure Soft Furnishings

Curtains, Roman Blinds, Cushions



Extensive range  
of fabrics

**01737 843858**

[www.cresswellscurtains.co.uk](http://www.cresswellscurtains.co.uk)

## Mike Palmer

**Electrical Services**

Part P registered electrician

From additional lighting and sockets  
to complete rewires

Fully insured Registered with the NICEIC

07866 930483 [mike@mikepalmer.biz](mailto:mike@mikepalmer.biz)

Boxhill Way, Strood Green, Betchworth RH3 7HY



## KING WILLIAM IV



Will Dennis wrote an amusing article in last month's mag about the 2016 King Willie vs Runners cricket match. This annual village sporting fixture was established at my suggestion in 2012, with Greg Ayton as the main organiser, assisted by Chris Presley. Last summer's match was a cliff-hanger, and the last ball extra run is now just a distant hangover. However, I must defend our team selection from the ringers accusation. Yes, we did have a few young guns under drinking age – but I can confirm that they were all *bone fide* employees. We take local youngsters at 15 and hopefully keep them through the summers till they leave uni. Anne deals with the students, but I must admit one of the first interview questions is

'have you played much cricket?' Now that the weather is getting better we hope to see many of you enjoying our gardens and hopefully the coming summer cricket match between two of the best pubs in Surrey will get a good local audience.

See you soon. Eamonn and Anne

Byttom Hill, Mickleham 01372 372590 [www.thekingwilliamiv.com](http://www.thekingwilliamiv.com)

## Mickleham Parish Council

### 465 Bus Service through Mickleham to continue

The 465 bus route through Mickleham has been saved following a protest campaign led by Mickleham Parish Council and supported by Westhumble Residents Association and residents who were concerned at the possible loss of a service that has been described as a lifeline for the village.

After Surrey County Council announced that agreement had been reached with Transport for London to continue the service 'for the next five years and with no changes', Reverend David Ireland, chairman of Mickleham Parish Council spoke for many in expressing his delight. 'Were the service to be reduced or removed it would be a catastrophe for Mickleham so this is very good news', he said.

'A future without a bus service through Mickleham would have been a struggle for many. The cross section of people I have seen in support shows its need, from 13-year-old schoolchildren to 82-year-olds. Its people and the council seeing sense and I am enormously encouraged. If people feel strongly

enough they can influence those who take the decisions on their behalf."

After the Parish Council took up the fight, residents sent in their own letters of protest and a petition was organised. A photoshoot with the Dorking Advertiser was arranged to demonstrate the strength of feeling and attracted more than a 100 people including schoolchildren from Box Hill School.

TfL will continue to fund the stretch of the service between Kingston and Leatherhead while the County Council will fund the stretch between Leatherhead and Dorking for at least another five years.

### MORE MPC NEWS

The Annual Parish Meeting will be held at Mickleham Village Hall on Wednesday 10<sup>th</sup> May at 7.30 p.m. and residents attending will learn what options are available to tackle housing need in the village.

Louise Williams from Surrey Community Action has agreed to address the

meeting and talk about the advantages of a Housing Needs Survey. It follows a suggestion by Mickleham resident Fiona Taylor, at a recent Parish Council meeting, that the Council put together a clearly defined strategy regarding local housing.

The survey would provide residents with an opportunity to give their opinion on the issue of local affordable housing and, secondly, to assess the current affordable housing need.

Two other options open to the Parish Council are a Village Design Statement or Neighbourhood Plan. A VDS describes the village, its attributes and character, and focuses on how planned development should be carried out to be in harmony with its setting and to contribute to the enhancement of the local environment.

A Neighbourhood Plan is a much more comprehensive and lengthy document and is likely to be considered too involved for a community of Mickleham's size.

Trevor Haylett

### Southwold Holiday Accommodation

Newly refurbished 5-bed/4-bath detached house, quiet location in the heart of Southwold. Close to shops pubs and restaurants. A short walk to the beach and harbour.

Available for short term and weekly lets.

Call 07880 532 410  
for availability and prices.



## Foot Care Focus

- Toenail cutting & filing, Diabetic foot care & advice
- Reduction and removal of hard skin, cracked heels & caluses
- Reduction of thickened nails and fungal infections
- Reduction & removal for corns & verrucas
- Treatment of ingrowing toenails & athlete's foot
- Clinic treatment or home visits available

APRIL STANDISH TCFCdip  
Foot Care Practitioner  
07397 154 000 [april@footcarefocus.co.uk](mailto:april@footcarefocus.co.uk)

## SEVEN PILATES

### Pilates at Mickleham Village Hall

**Mondays 12.40pm & 1.45pm**

All ages and abilities welcome, pay as you go, booking essential

e: [sophie@sevenpilates.co.uk](mailto:sophie@sevenpilates.co.uk) p: 07787 502982

[@sevenpilatesuk](http://www.sevenpilates.co.uk)

Mickleham Village Hall AGM – Saturday 20<sup>th</sup> May 10 a.m. in the hall





## Reflexology

Valerie Dexter, IIR AOR  
Clinical Reflexologist

07968 777941  
val@enhancingenergy.co.uk  
Dorking based

**Treat your feet to treat your whole body**  
relieves stress headaches sciatic pain,  
nervous tension aids sleep digestive disorders



## GARDENING

£15 per hour – Free quotations  
– SERVICES –

Gardening Maintenance  
Hedge Trimming Specialists  
Garden Design  
Soft Landscaping

07740 308 490 contoursgardening@outlook.com  
www.contoursgardening.com

## Julie Watts Family Law

AN AFFORDABLE AND EXPERIENCED PROFESSIONAL  
ALTERNATIVE TO TRADITIONAL SOLICITORS

- Divorce • Arrangements for children • Finances
- Court Proceedings

PROUD TO PROVIDE A DIFFERENT KIND OF SERVICE

- Affordable fees • Straight-talking advice
- Practical, real support

Contact me for a consultation

07808 572157 juliewattsfamilylaw.co.uk



Open  
Monday to Friday  
8 a.m. - 5 p.m.  
& Saturday  
8 a.m. - 1 p.m.

ALL leading makes of lawn mowers  
& garden tractors catered for

Reasonable rates

Free estimates & friendly service

Paul White Bookham 01372 458008

## Need help with your accounts?

If you run your own business you will appreciate how difficult it can be to keep up with your accounting paperwork.

However, meeting deadlines and understanding the financial health of your business are crucial to avoiding penalties and ensuring that the hard work you put in pays off where it matters – in your pocket

- Tailored accountancy local to Dorking – saving you time
- Fixed fees – saving you money • Free Xero software – simple invoicing

Call today to arrange a  
free no-obligation

01737 652 852

esther@a4cgroup.co.uk  
natasha@a4cgroup.co.uk



Tree Health Care Specialists



Chadhurst Farm, Coldharbour Lane, Dorking, Surrey RH4 3JR

Tel: 01306 741800 Fax: 01306 885150

Email: james@treeline.co.uk www.treeline.co.uk

## Dorking Pest Control Services

Local Authority Approved Contractors



Our Services include: Wasps, Bee Swarms, Hornets, Rats, Mice,  
Squirrels, Fleas, Flies, Ants, Cockroaches, Bed Bugs,  
Rabbits, Moles, Foxes and Deer



• Domestic, Commercial and Industrial • Contract Work • Preventative Control Programmes

Experts in pest control throughout Surrey

Office: 01306 743001 Ivor: 07710 117491 Chris: 07971 519415

www.dorkingpestcontrol.com

INSPIRATIONAL  
Box Hill School

## There are no limits

A talk by **KAREN DARKE**, MBE  
British paralympic cyclist, adventurer and author

*"Her story is not just one of the triumph of the human spirit, but of the 'spiritual'. It's 'spirit' that makes us what we are, 'spirit' that calls out to us in the wilderness places".*  
Sir Ranulph Fiennes

**Thursday  
4th May 2017**  
Drinks Reception 7.00pm | Talk 7.30pm – 9.30pm  
Box Hill School, Mickleham

Karen Darke was paralysed from the chest down at the age of 21 following an accident, whilst sea cliff climbing.  
Karen's inspirational story is framed by her belief that 'Disability is a state of mind not a state of body'. She believes that our own minds are our biggest obstacles to living and achieving our wildest aspirations, and if we set our heart and mind to it then 'there are no limits'.  
To have the most impact in life we should challenge our constraints, adopt a positive mental attitude and support each other to become the best we possibly can. Karen has crossed Greenland's ice cap on skis, scaled El Capitan, hand-cycled the length of Japan and sea kayaked a 1200 mile length of the Canada-Alaska coastline.  
She is currently a full-time athlete with the British Para-Cycling Team and won Gold at the 2016 Rio Paralympics to add to her Silver from London 2012.  
We extend a very warm invitation to join us at Box Hill School to share Karen's remarkable journey.

**TICKETS £6** (including refreshment)  
BOOK ONLINE [www.boxhillschool.com/events](http://www.boxhillschool.com/events) OR CALL 01372 373382

National Trust

## PLANTS IN A DIFFERENT LIGHT

An exhibition of botanical photograms  
by scientist and artist, Jan Ramscar\*

The Fox Talbot Museum  
at Lacock Abbey  
18<sup>th</sup> March – 18<sup>th</sup> June  
10.30 am – 5.30 pm

Jan Ramscar's photograms are created without the use of a camera. By shining light through plants and seeds onto photographic paper, Jan creates vivid and intricate images that are wholly unique and magnify some of the smallest elements of the natural world to a size where they can truly be appreciated.

\* Jan Ramscar lives in Holmbury St Mary and worked as a biology teacher at Box Hill School from 2000 until her retirement in 2008.

## AGE Concern Mole Valley

If you are over 55 and live in the Mole Valley area, you can use Age Concern's free computer courses based in either Dorking or Leatherhead.

The course runs once a week for 6-8 weeks with the option of additional weeks to reinforce and build on what you have learned. Topics covered will include: browsing on the internet, basic keyboard and mouse skills, using an iPad/tablet, setting up and using your own email or Skype accounts and how to shop on the internet as well.

Those who already own a laptop or an iPad/tablet are encouraged to bring that to learn on, but computers will be provided as well – it's up to you.

Before coming to the course, you must register your interest by telephoning 07442 017169 / 01306 899104 or via [info@ageconcernmolevalley.org.uk](mailto:info@ageconcernmolevalley.org.uk)

Registered Charity No 1111678

St Michael's School

## Spring Fête

Saturday  
20<sup>th</sup> May  
11 a.m. to 2 p.m.

Come and join  
the fun at  
School Lane,  
Mickleham

More details  
to follow  
next month



## TONY WINCH

### CARPENTER, JOINER & CABINET MAKER

[www.tonywinch.com](http://www.tonywinch.com)

01306 742373

07969 016 924

## PLASTERING

John Hooper

over 30 years' experience

Work includes float and sett, skimming, screeding, traditional rendering, modern coloured rendering (monocouch) cornicing from small ceilings to large newbuilds

07946628190 01737423489

[j.hooper-plastering@hotmail.co.uk](mailto:j.hooper-plastering@hotmail.co.uk)



## Shakespeare Electricals

Your local electrician



Fully qualified  
and insured



10% off labour costs with this advert

Call Matthew on 07783 553880

[www.shakespeare-electricals.co.uk](http://www.shakespeare-electricals.co.uk)

## Building Plans

For home improvements & extensions

Including planning & building regulations  
Fast efficient service at competitive rates

**MICHAEL LLOYD**

CEng MICE MINT

For free consultation:

Phone: 01483 205479 or 07958 791 402

Email: [michael@lloydplanning.london](mailto:michael@lloydplanning.london)

## R A BUTLER

INTERIOR AND EXTERIOR  
PAINTING & DECORATING

OVER 30 YEARS' EXPERIENCE



**BUILDING  
REPAIRS  
UNDERTAKEN**



PATIOS, DECKING ETC NO JOB TOO SMALL

LOCAL REFERENCES IF NEEDED

01372 372586 / 07776 256131

## OSTEOPATH

NICK WOOLLEY

BSc (Hons) Ost

Osteopathy for all ages

Also offering Cranial Osteopathy and  
Myofascial Acupuncture needling treatments

For advice or an appointment

01372 379270

[www.Headleyosteo.com](http://www.Headleyosteo.com)

## COOK

### ARBORICULTURAL LTD

Professional planting, Tree surgery,  
Surveying & Remedial work in Surrey

Tree removals ~ Stump Grinding ~ Planting  
Tree reductions & pruning ~ Tree health & development site surveys

For a free, no obligation quote please get in touch:

07739 681 706 [alex@cookarbor.co.uk](mailto:alex@cookarbor.co.uk) [www.cookarbor.co.uk](http://www.cookarbor.co.uk)

Michaela's Cottage, Fredley Park, Mickleham, Dorking RH5 6DE



## One small step for man, one giant leap for St Michael's...

received a book token enabling them to choose their own book to enjoy at home. Establishing a love of books and reading is something we strongly encourage at the nursery, with story time every day and our own library for the children to use.

Back in the realms of space, we converted our gingerbread house in to Mission Control, enabling the children to take control of the many rockets and spaceships orbiting Mickleham, and to talk to their fellow astronauts who were landing and walking on the moon - AKA our garden!

They say one's man rubbish (or, in this case, recycling) is another man's treasure and that was certainly true as we relieved our parents of lots of cardboard boxes, tubes, yoghurt pots, bubble wrap and foil. The children put these to good use, transforming them into all manner of rockets in our junk modelling sessions; they also loved

manipulative play time which saw them experiment with monsters and aliens in soap flakes! Of course, reading time also had a space and alien theme with *Man on the Moon* by Simon Bartram, being a firm favourite.

Away from the planets, we have been adding to our forest school area over the last few weeks. Our recent mum's pamper night and last year's Mootilda events provided funds for the purchase of a large fire-retardant shelter which, given the recent wet (and occasionally snowy) weather, has made a huge difference to the children and staff during their sessions outside. We also have a new wood store and are looking at kettles, tripods and fire pits to complete the area. Our second group of children are now enjoying their time in the forest school, learning and playing in the woodland and discovering more about the natural world around them.

Debbie Turner

Photographs: The Nursery



Mission Control



A budding rocket scientist

## A new baby in the family?

Our Scandinavian-style wooden convertible high chair and Mothercare wooden cot with mattress and sheets are no longer needed. No charge but a contribution to the Westhumble Chapel Fund would be appreciated. Contact 01306 886658. New owner collects from Westhumble.



## REMEMBER!

Will Dennis is abseiling down the Spinnaker Tower in aid of local charities on 2<sup>nd</sup> April.

Donations to: [www.virginmoneygiving.com/WillDennis](http://www.virginmoneygiving.com/WillDennis)  
Help make this a whole parish outreach.





## Mickleham Village Hall, Dell Close

Weekdays 9.15 a.m. - 12.15 p.m. (term time)

WITH OPTIONAL LUNCH CLUB

On Mondays and Thursdays there is the option for children to stay until 2.45 p.m.

Maximum 26 children per session

• playing naturally • learning naturally

We offer an excellent range of pre-school activities for 2½ to 5 year-olds where they can learn through play in an informal, friendly atmosphere.

Contact us for more information about admissions

01372 361021 [www.stmichaelscommunitynursery.co.uk](http://www.stmichaelscommunitynursery.co.uk)

## Mickleham & Westhumble Youth Group



School years 7-9 for 11-to 14-year olds

on alternate Friday evenings

during term time

21<sup>st</sup> April, 5<sup>th</sup> & 19<sup>th</sup> May

7.15 - 8.30 pm

Mickleham Village Hall

For more information contact

Jonathan or Sarah Blake 0778 7126 966

An opportunity to meet up with friends and join us for games & fun!

## Tuesday Toddles

A new friendly group in Mickleham for kids aged 0-5 years to play along side their Childminder or Registered Nanny

Mickleham Village Hall

Every Tuesday. Term time only 9.30 - 11.30 a.m.

For more information please contact:

Natalie 07790 318 653 or ask to join our closed

Facebook group for Tuesday Toddles for regular updates.



Next term of Bugs: 18<sup>th</sup> April - 11<sup>th</sup> July

Mondays: 11am and 1.30 pm

Tuesdays: 10am, 11am and 1.30pm

Session length: 45 minutes

For more info or to register contact:

[learningboxhill@nationaltrust.org.uk](mailto:learningboxhill@nationaltrust.org.uk)

Box Hill Bugs



Lost: Colin's Band of Gold

Wanted, a metal detectorist to search my garden or a relatively small area of the Westhumble Field for my wedding ring. Reward offered.

Please contact Colin Solman on: 07999 124812



**BRAIN TEASER answer: FORGOTTEN HEROES**

## Making the most of the outdoors

Several studies recently have pointed to a decline in the amount of time children spend outside. On average, youngsters today spend half the time their parents did playing out of doors. Most of the parents questioned said their children have fewer opportunities for outside play than they did when they were young.

The research found, on average, children were playing outside for just over four hours a week, compared to 8.2 hours a week when the adults questioned were young. The poll also found children spent twice as long playing on screens as playing outside. Our sedentary lifestyle is of great concern for our well-being, weight control and making healthy lifestyle decisions.

At St Michael's we are very lucky to have beautiful surroundings for pupils to enjoy and benefit from. Nestled between the River Mole and Box Hill, at playtimes and lunchtimes, the children enjoy the idyllic surroundings; beautiful scenery and open space, including the recently renewed 'rec' for after school sessions. Much of our surroundings provide a rich learning environment. For example, the paths and hedgerows around the village are excellent for investigating the signs of the different seasons. This makes for a unique experience which is difficult to recreate in a built-up area or town.

Our outdoor facilities include a greenhouse and vegetable boxes, a reading circle, dedicated outdoor

learning spaces for Year R and Year 1 and a wonderful forest area at the back of the school which Geoff Knight has kindly allowed the school to use.

We are always trying to maximise the time that children spend learning outside the classroom through all the age groups. In their first year at St Michael's they have their own dedicated outdoor area. Opportunities for independent learning and learning through play are organised both inside and in the school grounds; children can make their own choice whether they want to learn indoors or outdoors (called 'free flow' by the teaching professionals). We always encourage the children to go out whatever the weather – rain, snow or shine!

Active play is essential to children's health and development. Academic research shows that active play is the natural and primary way that children learn. Outdoors they can have the freedom to explore in different ways and feel less controlled by the confines of the classroom. It is essential to their healthy growth and progress, particularly during periods of rapid brain development.

Hilary and the St Michael's Nursery team have been particularly helpful in delivering a series of Forest School sessions for our Reception class and those new to the school. We will be extending our 'Forest Adventures' sessions for Years 1 and 2 when they will have opportunities to take part in



**St Michael's School**

[www.stmichaels-dorking.surrey.sch.uk](http://www.stmichaels-dorking.surrey.sch.uk)

den building, team building exercises and fire making.

This year we have been incorporating many elements of our 'indoor' curriculum with opportunities to learn outside. After reading the *Stick Man* story, Year R helped sort twigs into various sizes and made their own stick man. Year 1 children enjoyed reading the book *Rainbow Fish* and spent time finding ways to sort leaves to make their own fish collage. We have seen that such activities promote independence and increase motivation and confidence.

We are planning exciting outdoor learning opportunities across the curriculum in the coming months ranging from Andy Goldsworthy-style art using natural materials to identifying living things and making bug 'hotels' in science.

We think that providing many opportunities to learn outside will help our precious children grow up to be successful, well rounded and happy adults.

Jeremy Smith

Photographs: St Michael's School



From left: Mr Smith in the story circle; sorting sticks; fire lighting



# Cryptic Crossword



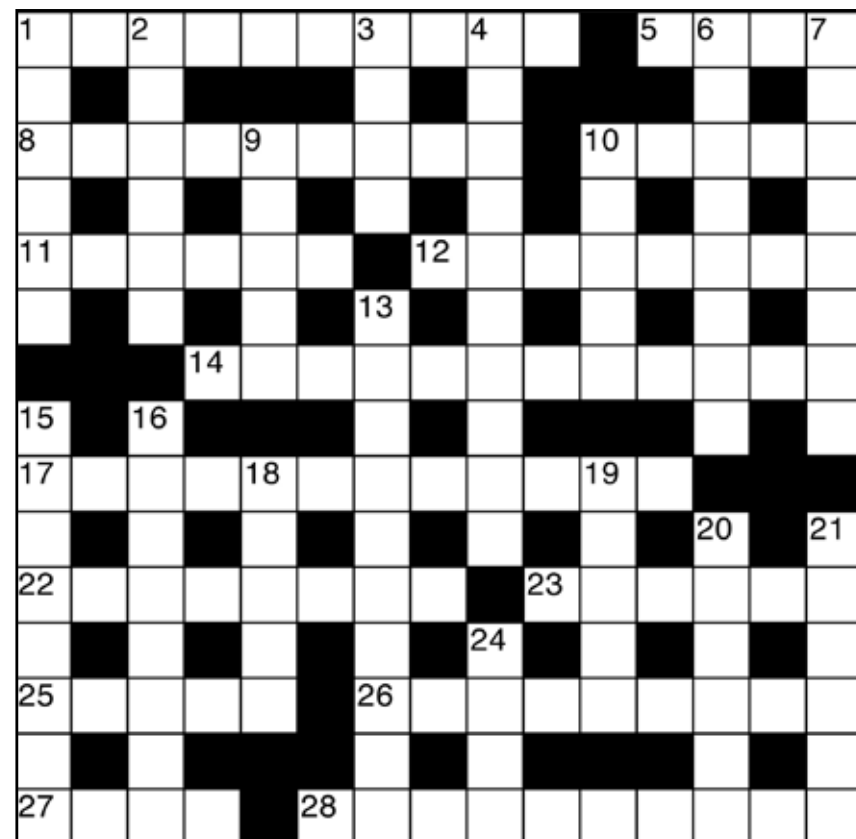
## Across

- 1 A mobile ban? Terrible! (10)
- 5 Some hairy etiquette may follow one in the Himalayas (4)
- 8 Parallels of varying altitudes (9)
- 10 Some arts degrees are in the sink (5)
- 11 Groups of bees gather around Violet and call for drinks? (6)
- 12 Big suitcases? Eight is too many! Cut down (8)
- 14 Didn't revise enough, but still got the job? (12)
- 17 Fearless author tested to destruction (5-8)
- 22 Janine's car got slimed in France. What did it? (8)
- 23 In which a stag has turned out speechless? (6)
- 25 Even zero zero speed indicates a certain amount of energy (5)
- 26 Humiliation in the cellar (9)
- 27 In a garden you may find refuse (4)
- 28 Emphatic or possibly figurative (10)

## Down

- 1 Basil faulty makes it up with daughter? (2,4)
- 2 A so-so range (6)
- 3 Help with article about an opera (4)
- 4 Later sorts out the final option (4,6)
- 6 European Community still euphoric (8)
- 7 Suggestion makes union end strangely? (8)
- 9 Large plant, northern, made of wood, and the Mekon (5)
- 10 African group hostile to unions? (5)

- 13 Create, redo, rebuild (10)
- 15 A drug that can travel through space (8)
- 16 Workers in the carriage trade, or teachers? (8)
- 18 Pocket flashlight or cheap lamp part (5)
- 19 Beagles are endlessly under par (5)
- 20 Rush into a choice of job (bad advice) (6)
- 21 Stationary radio noise? (6)
- 24 Festival including a lavish banquet (4)



Photograph: Ben Tatham



View of a full River Mole flowing under Burford Bridge showing scaffolding used during recent bridge repairs and repointing of the brickwork. Taken from the Burford Meadow side.

## ANSWERS TO MARCH CROSSWORD

### Across

- 1 Collywobblers 9 Afterglow 10 Dupes
- 11 Punish 12 Glowered 13 Detail
- 15 Repartee 18 Checkers 19 At last
- 21 Scantest 23 Scathe 26 Omega
- 27 Absconded 28 Elvis Presley

### Down

- 1 Clapped 2 Let on 3 Yardstick
- 4 Oslo 5 Bewilder 6 Endow 7 Residue
- 8 Operetta 14 Teenager 16 Artichoke
- 17 Frascati 18 Custody 20 Tuesday
- 22 Trail 24 Tidal 25 A.S.A.P.

RR-M



6 en-suite rooms from £89 per night including breakfast

**OPEN**

Monday – Saturday: noon – 11 pm

Sunday: noon – 10.30 pm

**BREAKFAST** (open to non-residents) **SERVED**

Monday – Thursday: 7.30 – 9.30 am; Friday & Saturday: 8 – 10 am

**LUNCH & DINNER SERVED**

Monday – Thursday: noon – 3 pm & 6 – 9 pm

Friday & Saturday: noon – 3 pm & 6 – 10 pm

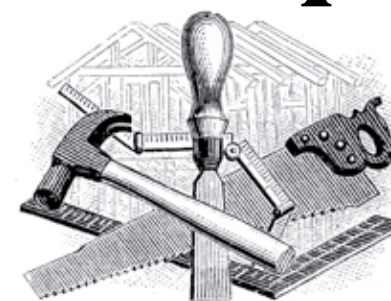
Sunday: noon – 6 pm

The Running Horses, Old London Road, Mickleham, Nr Dorking, Surrey RH5 6DU  
Call Us: 01372 372279 Email: [book@therunninghorses.co.uk](mailto:book@therunninghorses.co.uk)

# J S Wilson

Mickleham

# Carpentry & Building Services



Extensions ~ Conversions  
Refurbishments ~ Property Maintenance  
Fully guaranteed ~ Fully insured

*One call WILL solve it all*

Contact Jason on: 07761 926684 or 01372 379359  
[jswilsonconstruction@gmail.com](mailto:jswilsonconstruction@gmail.com)



**RB FENCING**

RESIDENTIAL • COMMERCIAL  
AGRICULTURAL • SCHOOLS • ACOUSTIC  
HOARDING • GATES • SECURITY

RICHARDSON & BRADS FENCING LTD  
T: 01306 640 143 - 01483 414 74  
E: [info@rbfencingltd.co.uk](mailto:info@rbfencingltd.co.uk)  
W: [www.rbfencingltd.co.uk](http://www.rbfencingltd.co.uk)  
A: 83 SOUTH STREET, DORKING, SURREY, RH4 2JU  
UNIT 45 MARTLANDS INDUSTRIAL ESTATE, SMARTS HEATH LANE, MAYFORD, GU22 0RQ

# John Wadsworth

INDEPENDENT ESTATE AGENTS



CALL NOW FOR YOUR FREE VALUATION

**01372 450500**

[www.johnwadsworth.co.uk](http://www.johnwadsworth.co.uk) [sales@johnwadsworth.co.uk](mailto:sales@johnwadsworth.co.uk)

*A professional, efficient and friendly service*



 **Neil A Mason**

Established 1976



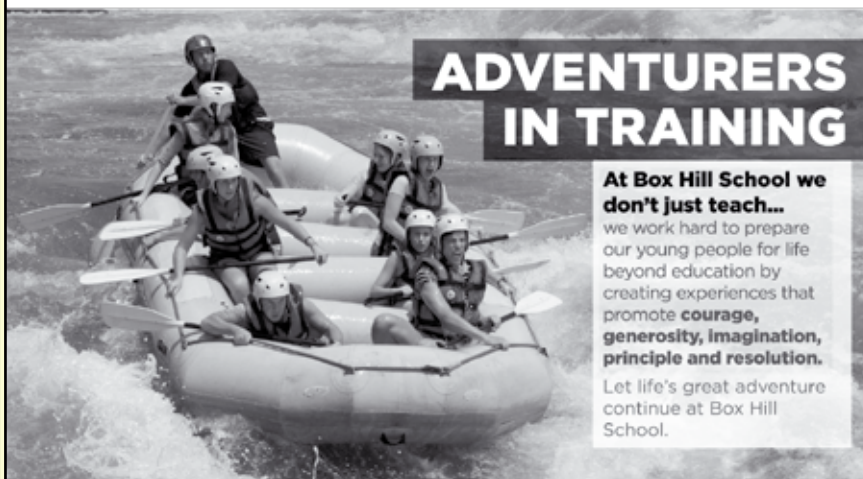
## All electrical & plumbing work undertaken

Inspections and Testing  
Extra Points, Rewiring etc  
Security and Emergency Lighting  
Temporary Power and Lighting Hire  
Public Address and Sound Systems  
Installed or For Hire  
Complete Bathroom and  
Fitted Kitchen Installation

**WESTHUMBLE**

Telephone: 01306 889073

## INSPIRATIONAL **Box Hill School** for girls and boys aged 11-18



### ADVENTURERS IN TRAINING

**At Box Hill School we don't just teach...**

we work hard to prepare our young people for life beyond education by creating experiences that promote **courage, generosity, imagination, principle and resolution.**

Let life's great adventure continue at Box Hill School.

Telephone: **01372 373382**

or email **admissions@boxhillschool.com**

**www.boxhillschool.com**

## DAVID TOBITT CARPETS

### FINE CARPETS SUPPLIED AND FITTED

*We have over 30 years' experience  
working in Dorking and the  
local area*

A comprehensive range  
of carpets available

We can bring samples  
to your home

Advice given on all  
types of carpet work



**WE TAKE A PRIDE IN  
WHAT WE DO**

**01306 885032**

**www.davidtobittcarpets.co.uk**

## MARTIN BURGESS LANDSCAPE AND GARDEN DESIGN



CONSULTATION SERVICE FOR  
GARDEN PLANNING, PLANTING  
AND MAINTENANCE

01737 842289 / 07966 183395

## HART SCALES & HODGES SOLICITORS

*We have been serving the Dorking community since 1782 and are proud to support our local parishes*

Our services include:

- Buying and selling your home
- Extending your lease
- Commercial property
- Inheritance Tax planning
- Care fees and Asset protection planning
- Setting up a trust
- Wills and Probate
- Lasting Powers of Attorney
- Divorce Separation and Children
- Employment for employer and employee
- Litigation and dispute resolution
- Business advice

Please call us on 01306 884432 for a FREE initial consultation to discuss your requirements

**www.hartsscales.co.uk**